

14 February 2013

**Industrial Turnover Indices (ITI). Base 2005
Industrial New Orders Received Indices (INORI). Base 2005
December 2012. Provisional data**

The annual rate of the Industrial Turnover Index in the Industry stands at –4.8%, as compared with –4.0% in November

The annual variation rate of New Orders Received is –3.1%, as compared with –1.7% in November

In 2012, the overall of the Industrial Turnover Index registers an average variation of –2.5% and the New Orders Received of –1.7%

Annual performance of Industrial Turnover

The Industrial Turnover Index (ITI) experienced an annual variation of –4.8% in December, eight tenths below that registered in November.

By economic destination of the goods, the industrial sectors that presented a greater negative effect on the general index were:

- **Intermediate goods**, with an annual rate of –11.2% and an effect of –3,743, due to the decrease registered in the most of the activities comprising this sector. Among them, highlighting, by their influence, *Manufacture of electrical material and equipment except household appliances, Metallurgy; manufacture of iron, steel and ferro-alloy products, Manufacture of other non-metallic mineral products and Forging, pressing, stamping and roll-forming of metal; powder metallurgy. Manufacture of tools, hardware goods, containers and other metal products.*

The only increase within this sector was that of the industrial turnover of *Manufacture of grain mill products, starches and starch products and food for animals.*

- **Capital goods**, with an annual rate of –4.7% and an effect of –1.407. All activities comprising this sector presented a negative annual performance of their industrial turnover. Among them, highlighting, by its influence, *Manufacture of beverages.*

In turn, the sector with the positive effect on the general index was **Energy**, with an annual variation of 12.5% and an effect of 1,461, mainly, due to the rise of *Manufacture of coke and refined petroleum products.*

A more detailed analysis showed the activities that most affected the annual rate of the ITI in the month of December.

Activities with the greatest negative effect on the annual rate of the ITI

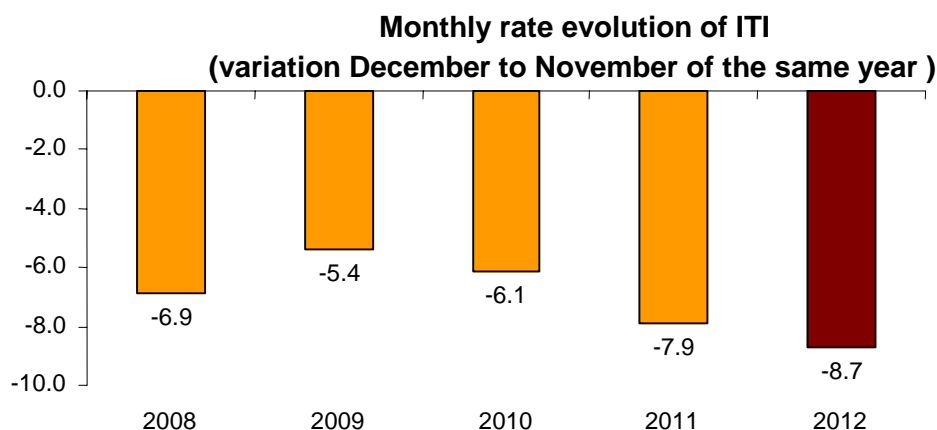
Activity (Basic aggregate of the ITI)	Annual rate (%)	Effect
Manufacture of electrical material and equipment except household appliances	-23.5	-0.837
Metallurgy; manufacture of iron, steel and ferro-alloy products	-12.3	-0.651
Manufacture of other non-metallic ore products	-17.4	-0.585
Forging, stamping, embossing and rolling of metals. Manufacture of tools, hardware goods, containers and other metal products	-13.9	-0.552

Activities with positive effect on the annual rate of the ITI

Activity (Basic aggregate of the ITI)	Annual rate (%)	Effect
Manufacture of coke and refined petroleum products	14.0	1.594
Manufacture of grain mill products, starches, and food for animals	5.8	0.183
Manufacture of motor vehicles, trailers and semi-trailers	1.9	0.170

Monthly rate performance ¹

The variation of the Industrial Turnover Index between December and November was –8.7%. This month-on-month rate of December was the lowest in the last five years.

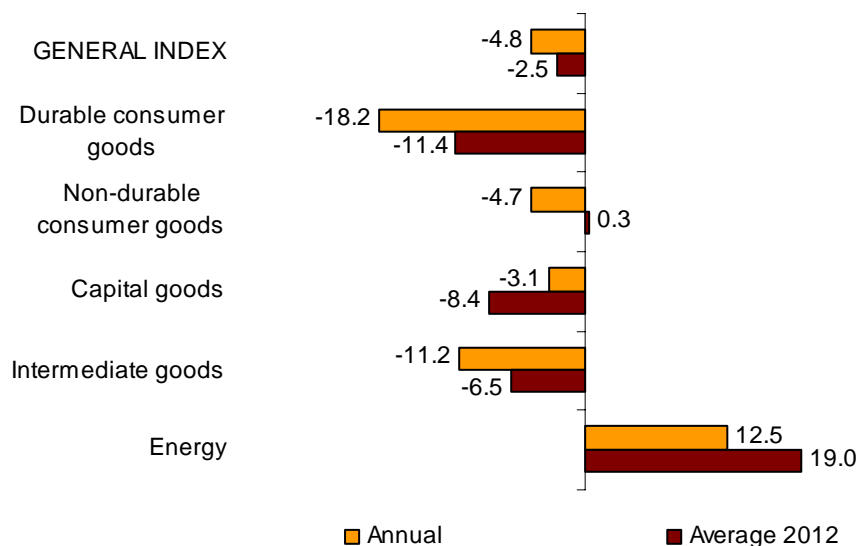


¹ In order to contribute to the analysis and interpretation of data, this section has been added with the monthly rate performance of the ITI in the last years. The monthly rates of this type of series may have some degree of seasonal behaviour, therefore it is recommended that it be evaluated in relation to the item of data for the same month in previous years.

Year-to-date average rates

The average rate of the Industrial Turnover Index registered a variation of **-2.5%** in 2012. By economic destination of the goods, the rate was negative in all industrial sectors, except in Energy and Non-durable consumer goods.

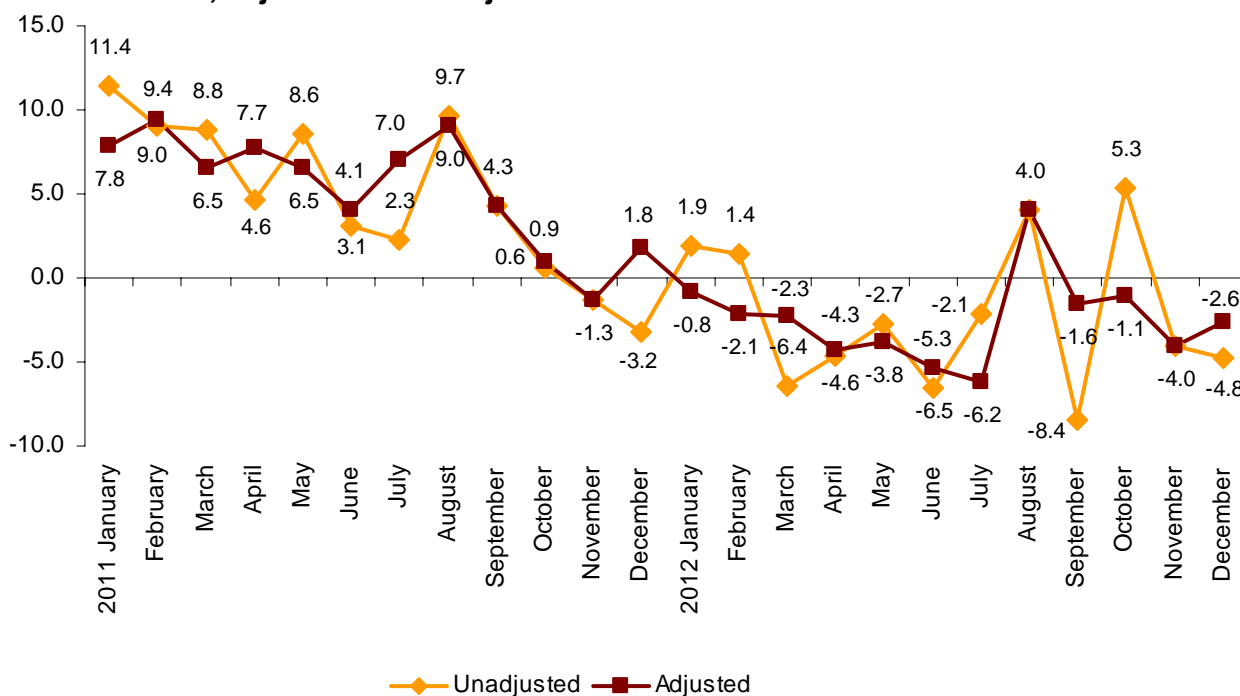
Annual and year-to-date average rates of ITI General index and by economic destination of the goods



Performance of the ITI, adjusted for the calendar effect

After adjusting for the calendar effect, that is, the difference between the number of working days in a given month in different years, **the annual variation of the ITI was -2.6%, almost one and a half points over that registered in November.**

Annual evolution of the ITI General Index, adjusted and unadjusted



Annual performance of Industrial New Orders Received

The Industrial New Orders Received Index (INORI) experienced an annual variation of –3.1% in December, almost one and a half points below that registered in November.

By economic destination of the goods, the industrial sector that presented the greatest negative effects on the general index was:

- **Intermediate goods**, with an annual rate of –9.1% and an effect of –3.173, motivated by the decrease in almost all activities comprising this sector. Among them highlighted, by their influence, *Forging, pressing, stamping and roll-forming of metal. Manufacture of tools, hardware goods, containers and other metallic products, Metallurgy; manufacture of iron, steel and ferro-alloy products and Manufacture of other non-metallic mineral products.*

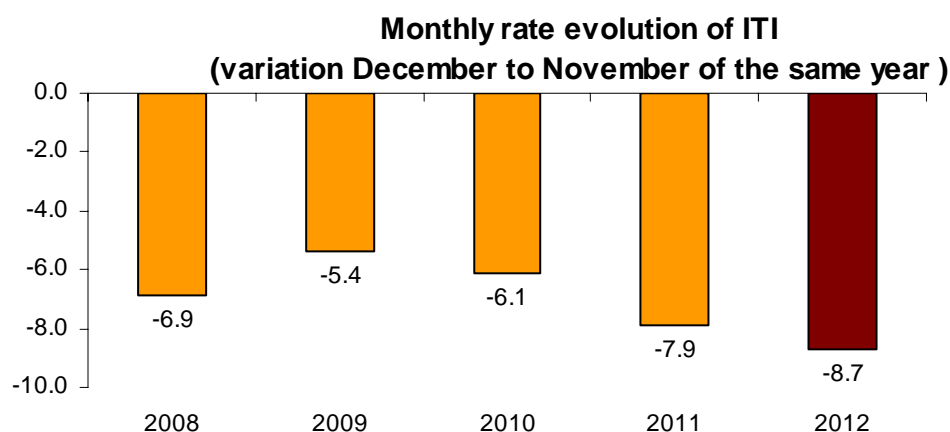
The only activity in this sector with an increase of Industrial New Orders compared to December 2011 is that of *Manufacture of grain mill products, starches and starch products, and food for animals.*

- **Capital goods**, with an annual rate of –3.7% and an effect of –1,120, due to the negative performance of the new orders received in all the activities that comprise it. Among them, highlighting, *Food industries (except grain mill products and animal feeds) and Manufacture of beverages.*

The only sector with a positive impact on the Index was **Energy** with an annual variation of 13,0% and an effect of 1,540, due to the increase registered in *Manufacture of coke and refined petroleum products.*

Monthly rate performance²

The variation of the New Orders Received between December and November was –8.3%. This month-on-month rate was the lowest registered in the last five years.



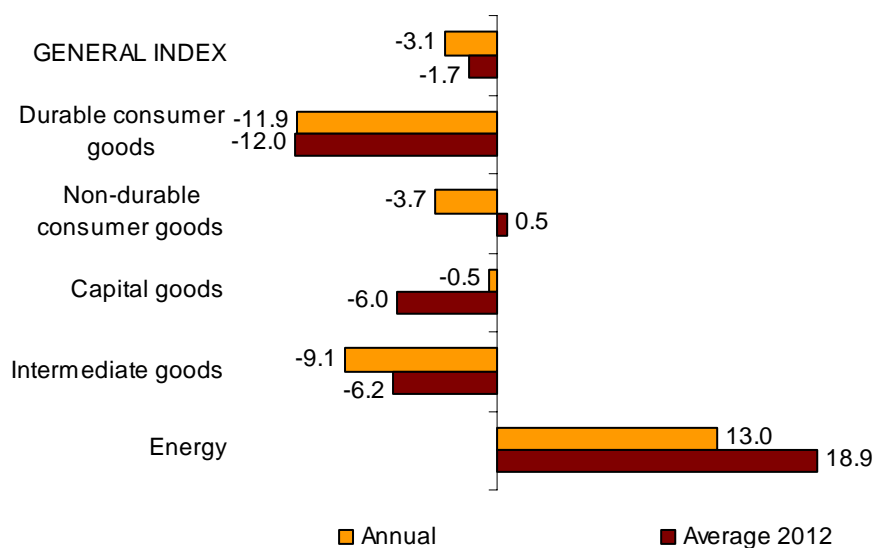
² In order to contribute to the analysis and interpretation of data, this section has been added with the monthly rate performance of the INORI in the last years. The monthly rates of this type of series may have some degree of seasonal behaviour, therefore it is recommended that it be evaluated in relation to the item of data for the same month in previous years.

Year-to-date average rates

The average of the General Industrial New Orders Received Index in 2012 registered a variation rate of **-1.7%**, as compared with that of 2011. By economic destination of the goods, this variation rate was negative, in all the industrial sectors, except Energy and Non-durable consumer goods.

Annual and year-to-date average rates of INORI

General index and by economic destination of the goods

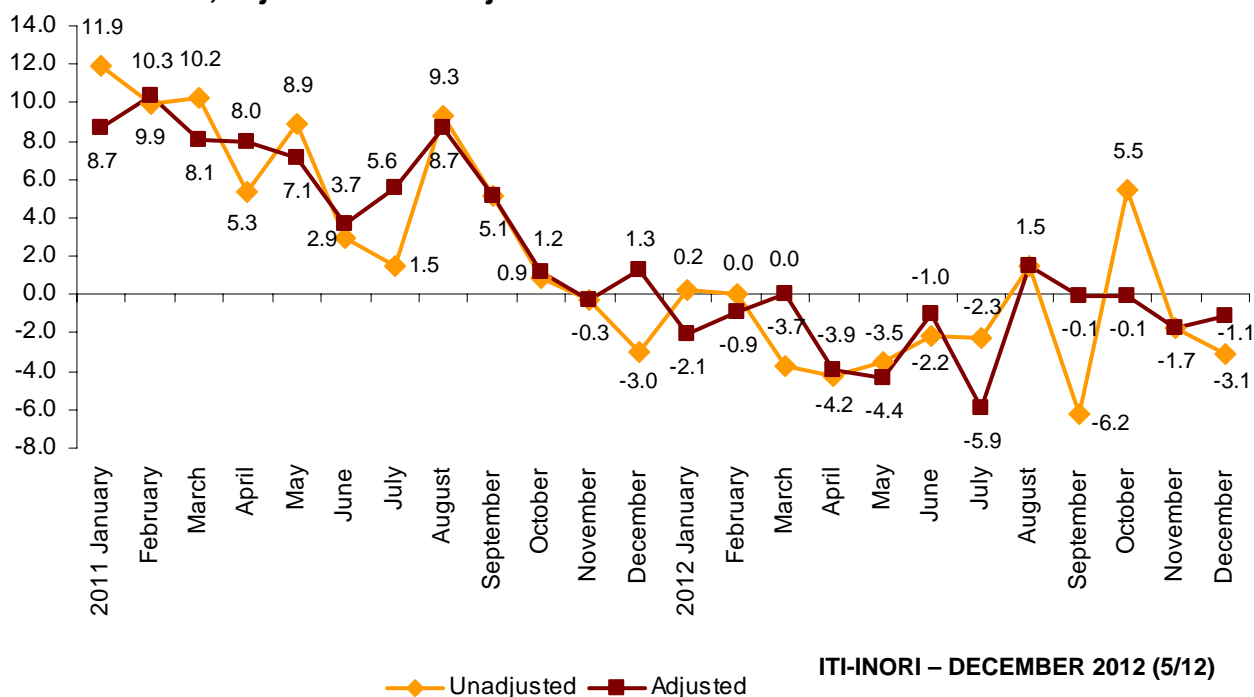


Performance of the INORI, adjusted for the calendar effect

After eliminating the calendar effect, that is, the difference between the number of working days in a given month in different years, **the annual variation of the INORI in December was -1.1%, almost one-and-a-half points over that registered in November.**

Annual evolution of the INORI

General Index, adjusted and unadjusted



Industrial Turnover Indices. Base 2005

Industrial New Orders Received Indices. Base 2005

December 2012

Provisional data

1. Industrial turnover indices by economic destination¹

	Index	% variation		Effect Annual
		Annual	Average 2012	
GENERAL INDEX	86.7	-4.8	-2.5	
1. CONSUMER GOODS	91.2	-5.7	-0.6	-1.827
1.1. DURABLE CONSUMER GOODS	40.5	-18.2	-11.4	-0.420
- Manufacture of consumer electronics, optical instruments and photographic equipment	4.8	-45.7	-38.6	-0.028
- Manufacture of household appliances	52.9	-8.5	-3.9	-0.054
- Manufacture of motorcycles, bicycles, vehicles for the disabled and others	17.4	-26.5	-34.1	-0.023
- Manufacture of furniture	43.7	-19.7	-12.1	-0.246
- Manufacture of jewellery, costume jewellery and musical instruments	100.1	-25.3	-4.3	-0.069
1.2. NON-DURABLE CONSUMER GOODS	99.5	-4.7	0.3	-1.407
- Food industries (except grain mill products and food for animals)	114.9	-1.2	2.6	-0.201
- Manufacture of beverages	95.9	-10.2	-0.1	-0.398
- Manufacture of tobacco	62.6	-16.6	0.6	-0.036
- Manufacture of knitted fabrics, carpets, rope, non-woven fabrics, textile products for technical use and industrial and other textile products	55.5	-7.8	-4.3	-0.042
- Manufacture of garments	69.4	-1.8	4.6	-0.024
- Leather and footwear industry	59.2	-18.0	-4.1	-0.133
- Graphic arts and reproduction of recorded media	59.4	-17.0	-15.1	-0.243
- Manufacture of cleaning articles, perfumes and cosmetics	72.9	-12.6	-3.0	-0.151
- Manufacture of pharmaceutical products	126.3	-3.9	-1.1	-0.141
- Manufacture of sporting goods; games and toys and Other manufacturing industries	69.9	-11.6	-6.4	-0.039
2. CAPITAL GOODS	84.9	-3.1	-8.4	-0.714
- Manufacture of metal products for construction, containers made of metal, steam generators, weapons and ammunition	59.7	-11.0	-18.2	-0.299
- Manufacture of computers, peripherals and telecommunications equipment; appliances for measuring and navigation; radiation and medical and therapeutic equipment	64.7	-20.4	-12.4	-0.164
- Manufacture of machinery and equipment n.e.c.	99.4	-3.5	-5.4	-0.148
- Manufacture of motor vehicles, trailers and semi-trailers	67.4	1.9	-9.5	0.170
- Naval, railway, aircraft and spacecraft construction. Combat vehicles	240.7	-1.7	0.7	-0.070
- Manufacture of medical and dental instruments and supplies	75.4	-19.9	-2.6	-0.027
- Repair and installation of machinery and equipment	115.6	-10.1	-4.8	-0.177
3. INTERMEDIATE GOODS	70.4	-11.2	-6.5	-3.743
- Other mining and quarrying	65.3	-21.8	-9.7	-0.166
- Manufacture of grain mill products, starches, and food for animals	143.8	5.8	3.5	0.183
- Preparation and spinning of textile fibres. Manufacture of woven textiles. Textile finishings	41.4	-11.4	-6.7	-0.048
- Wood and cork industry	44.8	-12.1	-9.3	-0.143
- Paper industry	91.7	-4.2	-3.4	-0.107
- Chemical industry except cleaning articles, perfumes and cosmetics	84.4	-6.4	-0.4	-0.351
- Rubber and plastic material transformation industry	67.8	-11.5	-8.2	-0.415
- Manufacture of other non-metallic ore products	36.9	-17.4	-15.1	-0.585
- Metallurgy; manufacture of iron, steel and ferro-alloy products	76.0	-12.3	-11.0	-0.651
- Forging, stamping, embossing and rolling of metals. - Manufacture of tools, hardware goods, containers and other metal products	65.5	-13.9	-6.1	-0.552
- Manufacture of electronic components, assembled printed circuits, and magnetic and optical media	39.2	-34.7	-31.8	-0.072
- Manufacture of electrical material and equipment except household appliances	83.7	-23.5	-4.8	-0.837
4. ENERGY (Except supply of electrical energy, gas, steam, air conditioning)	158.4	12.5	19.0	1.461
- Extraction of anthracite, coal and lignite	47.9	-61.6	-23.6	..
- Extraction of crude oil, petroleum and natural gas
- Manufacture of coke and refined petroleum products	161.1	14.0	19.7	1.594

¹ Regulation (EC) no. 656/2007 of the Commission of 14 June 2007.

(..) Data not available due to statistical secrecy.

2. Industrial turnover indices adjusted by calendar effects

	Original index	% variation		Adjusted index	% variation	
		Annual	Average 2012		Annual	Average 2012
General index	86.7	-4.8	-2.5	88.3	-2.6	-2.7
1. Consumer goods	91.2	-5.7	-0.6	93.0	-3.5	-0.9
1.1. Durable consumer goods	40.5	-18.2	-11.4	41.4	-15.8	-11.6
1.2. Non-durable consumer goods	99.5	-4.7	0.3	101.4	-2.6	0.0
2. Capital goods	84.9	-3.1	-8.4	86.4	-0.8	-8.8
3. Intermediate goods	70.4	-11.2	-6.5	71.6	-8.9	-6.5
4. Energy*	158.4	12.5	19.0	159.0	13.2	18.9

*Except supply of electrical energy, gas, steam and air conditioning.

3. Interannual rates

Industrial turnover indices by economic destination

Period	General index		Consumer goods		Durable consumer goods		Non-durable consumer goods	
	Original	Adjusted ¹	Original	Adjusted ¹	Original	Adjusted ¹	Original	Adjusted ¹
2011 December *	-3.2	1.8	-1.5	3.6	-16.8	-11.3	-0.1	4.8
2012 January	1.9	-0.8	3.6	0.9	-6.5	-9.7	4.4	1.8
February	1.4	-2.1	3.9	-1.0	-11.4	-15.6	5.4	0.7
March *	-6.4	-2.3	-2.2	2.1	-15.3	-10.5	-1.1	3.1
April *	-4.6	-4.3	-3.3	-3.0	-15.4	-15.0	-2.3	-2.0
May	-2.7	-3.8	1.6	0.5	-11.4	-12.6	2.8	1.7
June *	-6.5	-5.3	-2.0	-0.7	-11.2	-9.7	-1.2	0.0
July *	-2.1	-6.2	-1.6	-5.7	-10.0	-14.8	-0.9	-4.8
August *	4.0	4.0	2.4	2.4	1.3	1.3	2.5	2.5
September *	-8.4	-1.6	-6.8	0.1	-18.5	-10.7	-5.8	0.8
October *	5.3	-1.1	5.8	-0.5	-2.1	-9.5	6.5	0.4
November *	-4.0	-4.0	-2.1	-2.1	-12.3	-12.3	-1.2	-1.2
December	-4.8	-2.6	-5.7	-3.5	-18.2	-15.8	-4.7	-2.6

Period	Capital goods		Intermediate goods		Energy	
	Original	Adjusted ¹	Original	Adjusted ¹	Original	Adjusted ¹
2011 December *	-11.4	-6.7	-4.5	0.8	16.6	18.1
2012 January	-3.3	-5.9	-2.1	-4.8	22.4	21.6
February	-2.2	-7.9	-5.2	-6.2	28.4	28.1
March *	-14.7	-10.8	-11.5	-7.3	22.0	23.4
April *	-10.4	-10.1	-6.7	-6.3	10.6	10.7
May	-7.4	-8.4	-7.2	-8.3	12.9	12.5
June *	-14.6	-13.4	-8.3	-7.0	6.8	7.2
July *	-6.4	-10.4	-4.4	-8.6	12.9	11.7
August *	-0.4	-0.4	-3.7	-3.7	34.1	34.1
September *	-20.7	-14.6	-10.9	-3.8	24.8	27.1
October *	-3.0	-9.0	1.6	-5.0	34.9	32.7
November *	-7.4	-7.4	-6.9	-6.9	7.4	7.4
December	-3.1	-0.8	-11.2	-8.9	12.5	13.2

¹ Index rates adjusted for calendar effects.

* Data revised.

4. Industrial Turnover Indices by branch of activity (CNAE 2009)

	Index	% variation		Effect
		Annual	Average 2012	Annual
GENERAL INDEX	86.7	-4.8	-2.5	
B. Mining and quarrying industries	64.2	-29.1	-11.9	-0.299
Extraction of anthracite, coal and lignite	47.9	-61.6	-23.6	..
Extraction of crude oil, petroleum and natural gas
Other mining and quarrying	65.3	-21.8	-9.7	-0.166
C. Manufacturing industry	87.0	-4.6	-2.4	-4.527
Food industry	119.0	-0.1	2.7	-0.018
Manufacture of beverages	95.9	-10.2	-0.1	-0.398
Manufacture of tobacco	62.6	-16.6	0.6	-0.036
Textile industry	48.3	-9.4	-5.4	-0.090
Manufacture of garments	69.4	-1.8	4.6	-0.024
Leather and footwear industry	59.2	-18.0	-4.1	-0.133
Manufacture of wood and of products of wood and cork, except furniture; basketmaking and wickerwork	44.8	-12.1	-9.3	-0.143
Paper industry	91.7	-4.2	-3.4	-0.107
Graphic arts and reproduction of recorded media	59.4	-17.0	-15.1	-0.243
Manufacture of coke and refined petroleum products	161.1	14.0	19.7	1.594
Chemical industry	82.2	-7.5	-0.9	-0.502
Manufacture of pharmaceutical products	126.3	-3.9	-1.1	-0.141
Rubber and plastic material transformation industry	67.8	-11.5	-8.2	-0.415
Manufacture of other non-metallic ore products	36.9	-17.4	-15.1	-0.585
Metallurgy; manufacture of iron, steel and ferro-alloy products	76.0	-12.3	-11.0	-0.651
Manufacture of metal products, except machinery and equipment	62.9	-12.7	-10.2	-0.851
Manufacture of computer, electronic and optical products	40.1	-24.6	-19.6	-0.264
Manufacture of electrical material and equipment	75.9	-21.3	-4.6	-0.891
Manufacture of machinery and equipment n.e.c.	99.4	-3.5	-5.4	-0.148
Manufacture of motor vehicles, trailers and semi-trailers	67.4	1.9	-9.5	0.170
Manufacture of other transport material	200.6	-2.2	-1.2	-0.093
Manufacture of furniture	43.7	-19.7	-12.1	-0.246
Other manufacturing industries	78.9	-18.1	-5.1	-0.135
Repair and installation of machinery and equipment	115.6	-10.1	-4.8	-0.177

(..) Data not available due to statistical secrecy.

5. Industrial New Orders Received Indices by economic destination¹

	Index	% variation		Effect Annual
		Annual	Average 2012	
GENERAL INDEX	86.6	-3.1	-1.7	
1. CONSUMER GOODS	91.2	-4.3	-0.4	-1.366
1.1. DURABLE CONSUMER GOODS	38.1	-11.9	-12.0	-0.245
- Manufacture of consumer electronics, optical instruments and photographic equipment	4.9	-48.2	-38.0	-0.031
- Manufacture of household appliances	51.5	-6.8	-4.7	-0.042
- Manufacture of motorcycles, bicycles, vehicles for the disabled and others	19.4	8.9	-36.5	0.006
- Manufacture of furniture	39.5	-10.1	-12.5	-0.105
- Manufacture of jewellery, costume jewellery and musical instruments	95.6	-26.9	-4.8	-0.073
1.2. NON-DURABLE CONSUMER GOODS	99.9	-3.7	0.5	-1.120
- Food industries (except grain mill products and food for animals)	114.3	-1.6	2.6	-0.271
- Manufacture of beverages	103.6	-5.6	0.5	-0.231
- Manufacture of tobacco	62.6	-16.6	0.5	-0.036
- Manufacture of knitted fabrics, carpets, rope, non-woven fabrics, textile products for technical use and industrial and other textile products	53.3	-9.1	-4.0	-0.048
- Manufacture of garments	69.4	-5.4	3.3	-0.075
- Leather and footwear industry	56.5	-13.3	-4.3	-0.091
- Graphic arts and reproduction of recorded media	52.0	-12.1	-14.6	-0.146
- Manufacture of cleaning articles, perfumes and cosmetics	76.3	-13.0	-2.6	-0.168
- Manufacture of pharmaceutical products	129.5	-0.3	0.0	-0.009
- Manufacture of sporting goods; games and toys and Other manufacturing industries	62.3	-14.5	-4.2	-0.046
2. CAPITAL GOODS	79.5	-0.5	-6.0	-0.101
- Manufacture of metal products for construction, containers made of metal, steam generators, weapons and ammunition	55.5	-8.2	-12.5	-0.206
- Manufacture of computers, peripherals and telecommunications equipment; appliances for measuring and navigation; radiation and medical and therapeutic equipment	61.3	-36.0	-17.0	-0.348
- Manufacture of machinery and equipment n.e.c.	99.6	0.9	-2.4	0.036
- Manufacture of motor vehicles, trailers and semi-trailers	68.6	-5.4	-10.9	-0.549
- Naval, railway, aircraft and spacecraft construction. Combat vehicles	164.5	104.4	38.1	1.452
- Manufacture of medical and dental instruments and supplies	71.2	-25.5	-2.4	-0.035
- Repair and installation of machinery and equipment	109.6	-22.9	10.7	-0.450
3. INTERMEDIATE GOODS	73.4	-9.1	-6.2	-3.173
- Other mining and quarrying	66.4	-21.6	-9.8	-0.170
- Manufacture of grain mill products, starches, and food for animals	143.9	6.7	4.3	0.216
- Preparation and spinning of textile fibres. Manufacture of woven textiles. Textile finishings	42.9	-7.1	-4.0	-0.030
- Wood and cork industry	41.0	-15.7	-8.8	-0.180
- Paper industry	91.3	-4.5	-2.5	-0.117
- Chemical industry except cleaning articles, perfumes and cosmetics	95.9	-5.7	-1.3	-0.358
- Rubber and plastic material transformation industry	70.3	-10.4	-8.6	-0.393
- Manufacture of other non-metallic ore products	37.1	-15.3	-13.4	-0.513
- Metallurgy; manufacture of iron, steel and ferro-alloy products	84.3	-10.2	-11.2	-0.597
- Forging, stamping, embossing and rolling of metals. - Manufacture of tools, hardware goods, containers and other metal products	70.2	-14.2	-6.6	-0.614
- Manufacture of electronic components, assembled printed circuits, and magnetic and optical media	35.3	-33.9	-31.8	-0.064
- Manufacture of electrical material and equipment except household appliances	77.5	-12.0	-2.2	-0.351
4. ENERGY (Except supply of electrical energy, gas, steam, air conditioning)	157.8	13.0	18.9	1.540
- Extraction of anthracite, coal and lignite	44.1	-40.2	-19.7	..
- Extraction of crude oil, petroleum and natural gas
- Manufacture of coke and refined petroleum products	160.5	13.6	19.4	1.584

¹ Regulation (EC) no. 656/2007 of the Commission of 14 June 2007.

(..) Data not available due to statistical secrecy.

6. Industrial New Orders indices adjusted by calendar effects

	Original index	% variation		Adjusted index	% variation	
		Annual	Average 2012		Annual	Average 2012
General index	86.6	-3.1	-1.7	88.1	-1.1	-1.7
1. Consumer goods	91.2	-4.3	-0.4	93.0	-2.1	-0.8
1.1. Durable consumer goods	38.1	-11.9	-12.0	38.7	-9.8	-12.1
1.2. Non-durable consumer goods	99.9	-3.7	0.5	102.0	-1.5	0.2
2. Capital goods	79.5	-0.5	-6.0	81.2	2.1	-6.2
3. Intermediate goods	73.4	-9.1	-6.2	74.7	-7.0	-6.4
4. Energy*	157.8	13.0	18.9	159.2	13.9	18.9

*Except supply of electrical energy, gas, steam and air conditioning.

7. Interannual rates

Industrial New Orders indices by economic destination

Period	General index		Consumer goods		Durable consumer goods		Non-durable consumer goods	
	Original	Adjusted ¹	Original	Adjusted ¹	Original	Adjusted ¹	Original	Adjusted ¹
2011 December	-3.0	1.3	-3.5	1.3	-22.7	-18.6	-1.8	3.2
2012 January *	0.2	-2.1	3.7	1.0	-12.1	-14.5	5.0	2.3
February *	0.0	-0.9	-1.3	-6.6	-13.1	-14.0	-0.3	-5.7
March	-3.7	0.0	-0.2	4.1	-12.6	-8.5	0.9	5.4
April	-4.2	-3.9	-3.8	-3.4	-18.5	-18.2	-2.5	-2.2
May	-3.5	-4.4	1.5	0.4	-13.0	-14.0	2.7	1.6
June *	-2.2	-1.0	-1.3	0.0	-13.7	-12.5	-0.2	1.1
July *	-2.3	-5.9	-0.1	-4.1	-7.8	-11.7	0.6	-3.6
August	1.5	1.5	1.7	1.7	-3.0	-3.0	2.0	2.0
September *	-6.2	-0.1	-4.7	2.2	-15.0	-8.4	-3.9	3.3
October *	5.5	-0.1	5.5	-0.7	-6.1	-12.0	6.4	0.0
November *	-1.7	-1.7	-1.4	-1.4	-14.4	-14.4	-0.4	-0.4
December	-3.1	-1.1	-4.3	-2.1	-11.9	-9.8	-3.7	-1.5

Period	Capital goods		Intermediate goods		Energy	
	Original	Adjusted ¹	Original	Adjusted ¹	Original	Adjusted ¹
2011 December	-9.6	-4.5	-3.7	1.4	15.9	17.9
2012 January *	-11.7	-14.2	-1.0	-3.7	22.0	20.8
February *	-3.8	-8.1	-4.0	-7.3	28.3	27.9
March	-9.8	-5.5	-9.2	-5.1	21.9	23.8
April	-7.3	-6.9	-7.1	-6.8	10.7	10.8
May	-10.0	-11.1	-7.7	-8.7	12.6	12.2
June *	-1.1	0.4	-5.8	-4.5	6.8	7.3
July *	-9.6	-13.7	-4.5	-8.5	12.7	11.1
August	-8.2	-8.2	-6.1	-6.1	33.9	33.9
September *	-12.9	-5.8	-12.0	-5.4	24.8	27.9
October *	0.4	-6.2	0.3	-5.8	34.3	31.4
November *	3.6	3.6	-7.6	-7.6	7.5	7.5
December	-0.5	2.1	-9.1	-7.0	13.0	13.9

¹ Index rates adjusted for calendar effects.

* Data revised.

8. Industrial New Orders Received Indices by branch of activity (CNAE 2009)

	Index	% variation		Effect
		Annual	Average 2012	Annual
GENERAL INDEX	86.6	-3.1	-1.7	
B. Mining and quarrying industries	64.4	-22.3	-10.9	-0.214
Extraction of anthracite, coal and lignite	44.1	-40.2	-19.7	..
Extraction of crude oil, petroleum and natural gas
Other mining and quarrying	66.4	-21.6	-9.8	-0.170
C. Manufacturing industry	86.8	-2.9	-1.6	-2.884
Food industry	118.5	-0.3	2.9	-0.055
Manufacture of beverages	103.6	-5.6	0.5	-0.231
Manufacture of tobacco	62.6	-16.6	0.5	-0.036
Textile industry	48.0	-8.2	-4.0	-0.078
Manufacture of garments	69.4	-5.4	3.3	-0.075
Leather and footwear industry	56.5	-13.3	-4.3	-0.091
Manufacture of wood and of products of wood and cork, except furniture; basketmaking and wickerwork	41.0	-15.7	-8.8	-0.180
Paper industry	91.3	-4.5	-2.5	-0.117
graphic arts and reproduction of recorded media	52.0	-12.1	-14.6	-0.146
Manufacture of coke and refined petroleum products	160.5	13.6	19.4	1.584
Chemical industry	92.2	-6.9	-1.5	-0.526
Manufacture of pharmaceutical products	129.5	-0.3	0.0	-0.009
Rubber and plastic material transformation industry	70.3	-10.4	-8.6	-0.393
Manufacture of other non-metallic ore products	37.1	-15.3	-13.4	-0.513
Metallurgy; manufacture of iron, steel and ferro-alloy products	84.3	-10.2	-11.2	-0.597
Manufacture of metal products, except machinery and equipment	63.8	-12.0	-8.7	-0.820
Manufacture of computer, electronic and optical products	37.8	-36.3	-23.2	-0.444
Manufacture of electrical material and equipment	70.9	-11.1	-2.6	-0.393
Manufacture of machinery and equipment n.e.c.	99.6	0.9	-2.4	0.036
Manufacture of motor vehicles, trailers and semi-trailers	68.6	-5.4	-10.9	-0.549
Manufacture of other transport material	138.4	100.0	28.7	1.458
Manufacture of furniture	39.5	-10.1	-12.5	-0.105
Other manufacturing industries	72.8	-21.3	-4.0	-0.154
Repair and installation of machinery and equipment	109.6	-22.9	10.7	-0.450

(..) Data not available due to statistical secrecy.

For further information see INEbase - www.ine.es/en/ All press releases at: www.ine.es/prensa/prensa_en.htm

Press Office: Telephone numbers: +3491 583 93 63 / 94 08 – Fax: +3491 583 90 87 - gprensa@ine.es

Information Area: Telephone number: +3491 583 91 00 – Fax: +3491 583 91 58 – www.ine.es/infoine/?L=1