

4 June 2014

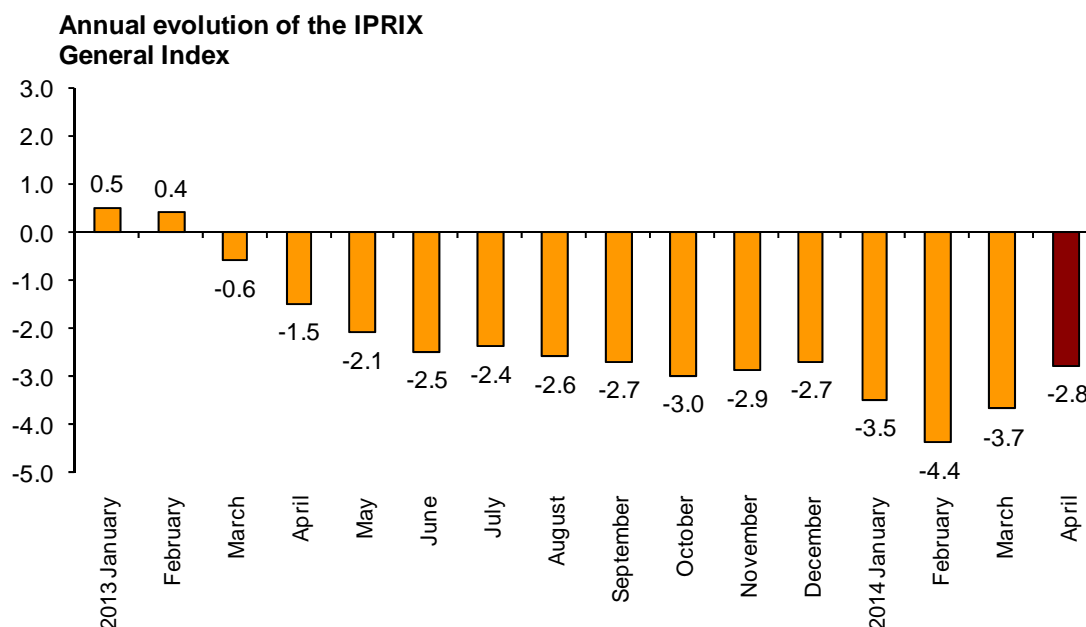
**Export and Import Price Indices of
Industrial Products. Base 2010**
April 2014. *Provisional data*

**The annual variation rate of the IPRIX stands at -2.8% , nine tenths
above that registered in March**

**The annual rate of the IPRIM is -2.4% , one point and a half over that
registered in the previous month**

Annual evolution of export prices

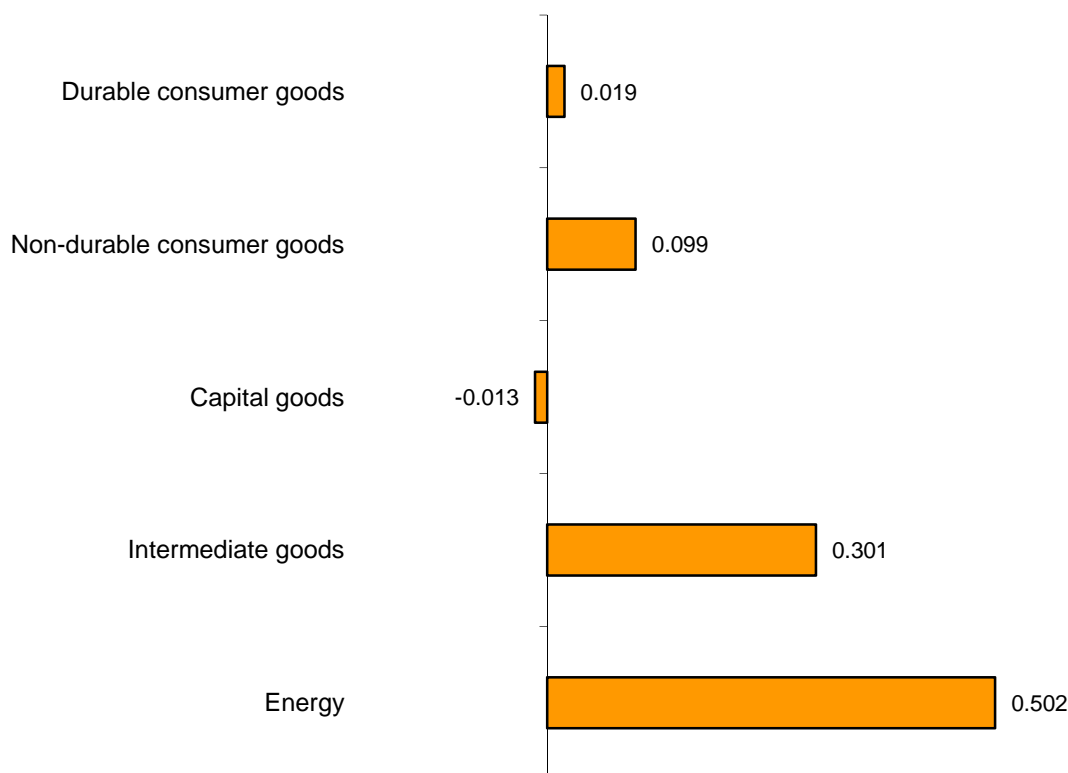
The annual rate of the Export Price Index (IPRIX) for the month of April was -2.8% , nine tenths above that registered in March.



By economic destination of the goods, the industrial sectors with the highest effect in the increase registered in the annual rate of the IPRIX were:

- **Energy**, which registered an annual variation of **-15.1%**, almost 8 points above that registered in March. This behaviour was mainly due to the lower increase in the prices of *Electric power generation, transmission and distribution* registered this month, as compared with the greater increase registered in April 2013. It was also due to the increase in the prices of *Manufacture of refined petroleum products*, as compared with the decrease registered the previous year.
- **Intermediate goods**, which increased seven tenths, reaching **-2.7%**. Worth noting in this behaviour the increase in the prices of *Manufacture of basic precious and other non-ferrous metals* and *Manufacture of basic chemicals, fertilisers and nitrogen compounds, plastics and synthetic rubber in primary forms*, as compared with the decreases registered in the previous year.
- **Non-durable consumer goods**, which presented a rate of **-1.7%**, five tenths over that registered in the previous month. This variation was mainly due to the increase in the prices of *Processing and preserving of meat and production of meat products* and in those of *Manufacture of basic pharmaceutical products*, as compared with the decrease registered in the same month of 2013.

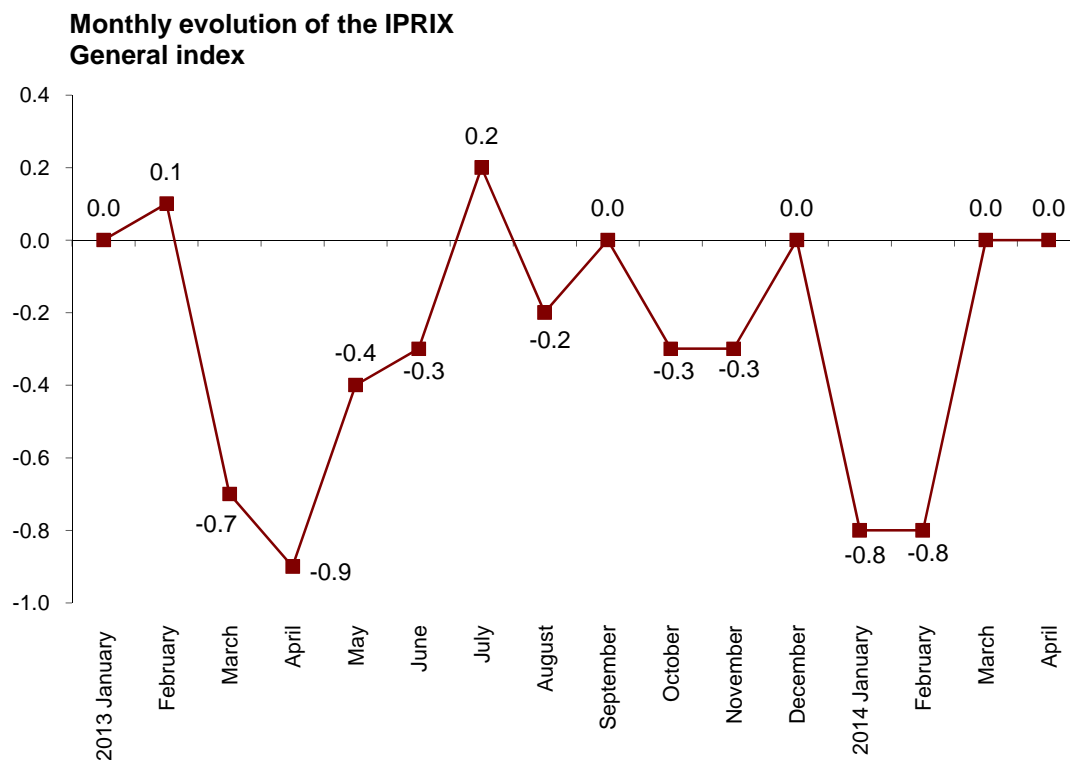
Contribution of the industrial sectors to the annual rate of the IPRIX



DIFFERENCE OF THE ANNUAL RATE OF THE GENERAL IPRIX 0.9

Monthly evolution of export prices

In April 2014, the Export Price Index registered a **0.0%** monthly variation, as compared with the previous month.



By economic destination of the goods, among the industrial sectors registering a positive effect on the monthly general index, it is worth highlighting:

- **Non-durable consumer goods**, whose variation rate was **0.4%**. This behaviour was mainly due to the increase in the prices of *Processing and preserving of meat and production of meat products*. Its contribution to the general index was **0.069**.

- **Intermediate Goods**, whose monthly variation rate was **0.1%** and its contribution to the IPRIX **0.027**.

In turn, among the industrial sectors with a negative effect on the monthly general index, worth noting:

- **Capital goods**, whose monthly rate stood at **-0.1%**. Worth noting in this behaviour the decrease in the prices of *Manufacture of motor vehicles*. Its effect on the IPRIX was **-0.031**.

- **Energy**, which registered a rate of **-0.5%**. This behaviour is mainly due to the decrease in the prices of *Electric power generation, transmission and distribution*. Its contribution to the general index was **-0.024**.

A more detailed analysis showed the activities that most affected the monthly rate of the IPRIX in the month of April.

Activities with the greatest positive contribution to the monthly rate of the IPRIX

Activity (CNAE-09)	Monthly variation (%)	Contribution
Processing and preserving of meat and production of meat products	2.4	0.049
Manufacture of basic chemicals, fertilisers and nitrogen compounds, plastics and synthetic rubber in primary forms	0.3	0.023
Manufacture of basic precious and other non-ferrous metals	0.7	0.022
Manufacture of refined petroleum products	0.5	0.020

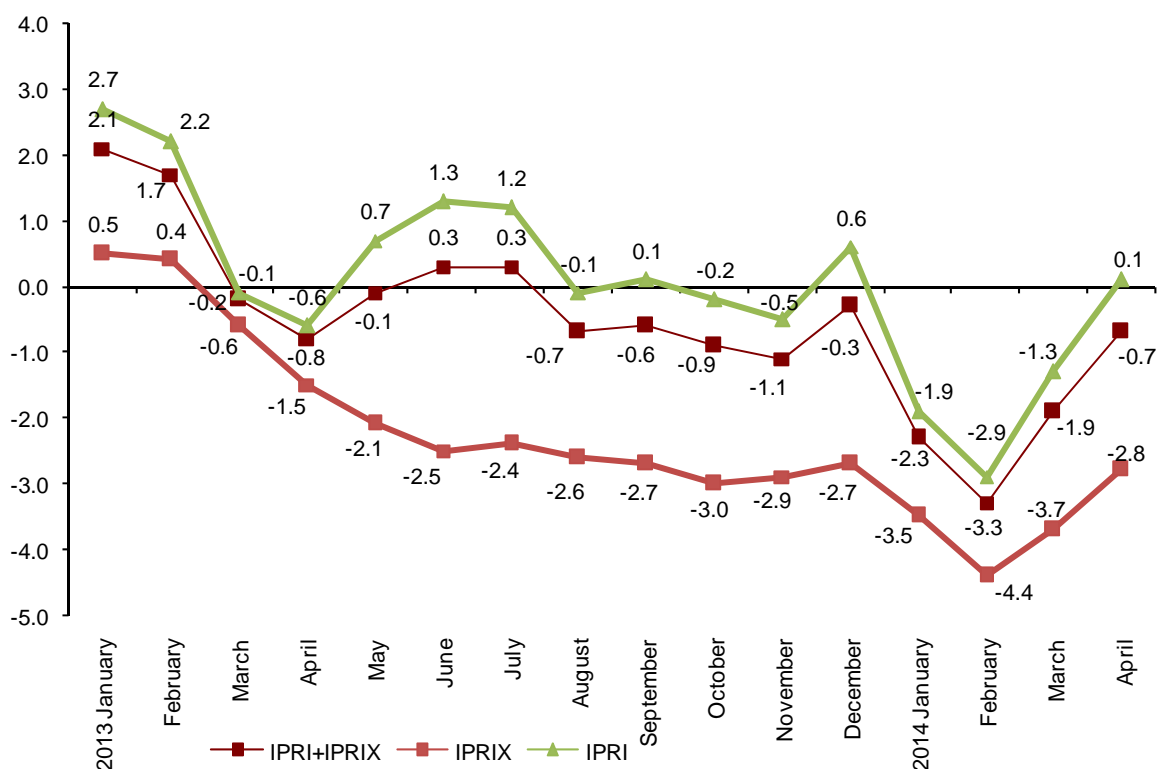
Activities with the greatest negative contribution to the monthly rate of the IPRIX

Activity (CNAE-09)	Monthly variation (%)	Contribution
Electric power generation, transmission and distribution	-4.1	-0.044
Manufacture of basic metals: Manufacture of basic iron and steel and of ferro-alloys	-0.7	-0.030
Manufacture of motor vehicles	-0.2	-0.028
Manufacture of basic metals: Manufacture of basic iron and steel and of ferro-alloys	-1.0	-0.018

Annual evolution of industrial prices of domestic and international markets in aggregate

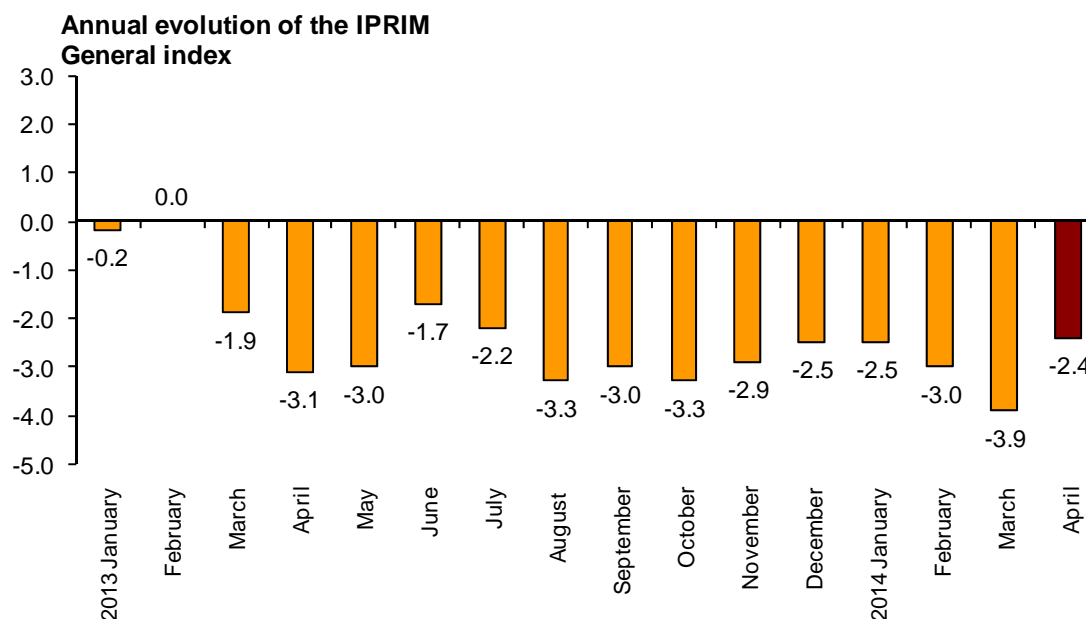
In April, the Industrial Price Index of the domestic and international markets, obtained from the addition of IPRI and IPRIX, registered an annual rate of **-0.7%**, over one point above that registered in the previous month.

Annual evolution of the IPRI+IPRIX, IPRIX and IPRI
General index



Annual evolution of import prices

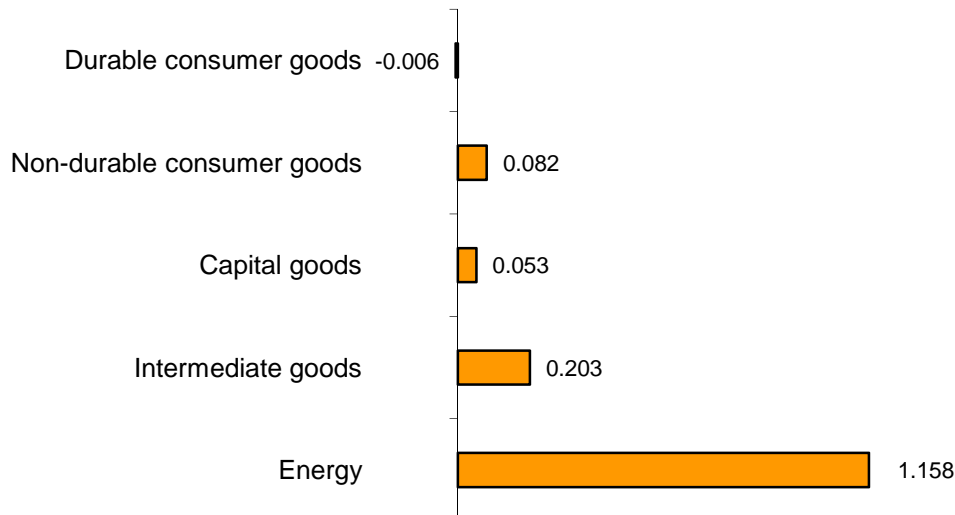
The Import Price Index (IPRIM) registered an annual rate of **-2.4%** in April, one point and a half over that registered in March.



By economic destination of the goods, among the industrial sectors that contributed the most to the increase in the annual rate of the IPRIM, worth noting *Energy* (**-4.2%**), which increased its rate more than four points, mainly due to the decrease in the prices of *Extraction of crude petroleum and natural gas*, which was lower than that registered in April 2013.

It is also worth noting the increases registered in *Intermediate goods* (**-2.8%**), whose rate increased by eight tenths, in *Non-durable consumer goods* (**-0.8%**), whose rate did so by four tenths, and in *Capital goods* (**-1.4%**), which registered an increase of two tenths.

Contribution of the industrial sectors to the annual rate of the IPRIM



DIFFERENCE IN THE ANNUAL RATE OF THE GENERAL IPRIM 1.5

A more detailed analysis showed the sectors that registered the greatest increase in their annual rates. Worth noting:

- **Extraction of crude petroleum and natural gas**, whose rate increased five points, reaching **-4.4%**. This increase was mainly due to the lower decrease in the prices of this activity this month, as compared with the decrease registered in the same month of the previous year.

- **Manufacture of coke and refined petroleum products**, which registered a variation of **-2.8%**, more than three points over that registered in March, due to the fact that the decrease in the prices this month was lower than that registered in April 2013.

- **Manufacture of wearing apparel**, which registered a variation of **-1.2%**, almost two points over that registered in the previous month.

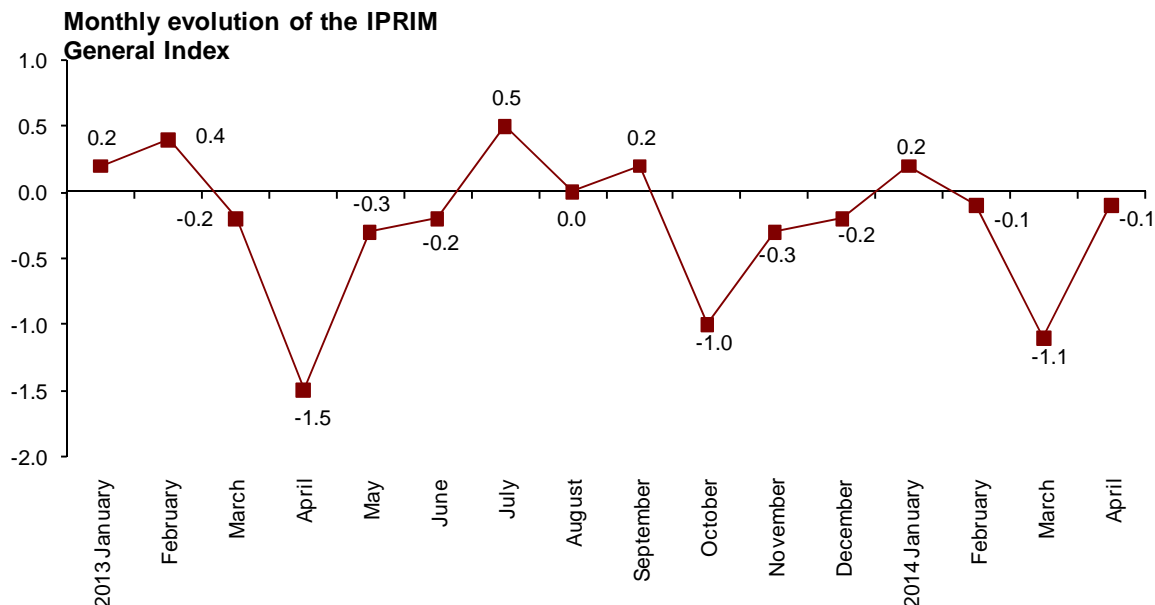
- **Manufacture of basic metals: Manufacture of basic iron and steel and of ferro-alloys**, whose rate registered an increase of almost two points, reaching **-5.3%**.

In turn, among the sectors that registered a decrease in their annual rates, worth noting:

- **Manufacture of computer, electronic and optical products**, with an annual variation of **-7.7%**, that is, eight tenths lower than that registered in the previous month. This behaviour was mainly due to the decrease in the prices of the sector this month, as compared with the price stability registered in April 2013.

Monthly evolution of import prices

In April, the monthly variation of the Import Price Index was **-0.1%**.



By economic destination of the goods, among the industrial sectors with a monthly negative effect in the general index, it is worth highlighting:

- **Energy**, with a variation rate of **-0.6%**, and an effect of **-0.144**, due to the decrease in the prices of *Manufacture of coke and refined petroleum products*.
- **Capital goods**, whose monthly rate stood at **-0.1%**. Its contribution to the general index was **-0.013**.

In turn, the sectors registering the greatest monthly positive effect in the general index are:

- **Non-durable consumer goods**, with an effect of **0.065** and a monthly variation of **0.3%**.
- **Intermediate goods**, which registered a monthly variation of **0.1%** and an effect of **0.025** in the general IPRIM.

A more detailed analysis showed the activities with the greatest effect on the monthly rate of the IPRIM in April.

Activities with the greatest positive contribution to the monthly rate of the IPRIM

Activity (CNAE-09)	Monthly rate (%)	Contribution
Manufacture of other transport equipment	2.6	0.065
Manufacture of wearing apparel	1.3	0.056
Manufacture of chemicals and chemical products	0.2	0.016
Manufacture of motor vehicles, trailers and semi-trailers	0.1	0.012

Activities with the greatest negative contribution to the monthly rate of the IPRIM

Activity (CNAE-09)	Monthly rate (%)	Contribution
Manufacture of coke oven products	-1.9	-0.119
Manufacture of computer, electronic and optical products	-0.8	-0.055
Extraction of crude petroleum and natural gas	-0.1	-0.021
Manufacture of machinery and equipment n.e.c	-0.3	-0.020

Export and Import Price Indices of Industrial Products. Base 2010 April 2014

Provisional data

1. Export Indices: general index and by economic destination of the goods

	Index	% Variation			Effect	
		Monthly	Year to date	Annual	Monthly	Year to date
GENERAL INDEX	102.8	0.0	-1.5	-2.8		
Consumer goods	104.2	0.3	-0.6	-1.9	0.064	-0.140
- Durable consumer goods	96.8	-0.2	-1.3	-3.6	-0.005	-0.035
- Non-durable consumer goods	106.5	0.4	-0.6	-1.7	0.069	-0.105
Capital goods	101.7	-0.1	-0.8	-1.5	-0.031	-0.290
Intermediate goods	104.7	0.1	-0.6	-2.7	0.027	-0.223
Energy	87.1	-0.5	-15.6	-15.1	-0.024	-0.886

2. Import Indices: general index and by economic destination of the goods

	Index	% Variation			Effect	
		Monthly	Year to date	Annual	Monthly	Year to date
GENERAL INDEX	108.4	-0.1	-1.0	-2.4		
Consumer goods	105.5	0.3	-0.1	-1.2	0.075	-0.021
- Durable consumer goods	99.9	0.2	0.1	-2.8	0.009	0.004
- Non-durable consumer goods	107.1	0.3	-0.1	-0.8	0.065	-0.026
Capital goods	99.8	-0.1	-0.1	-1.4	-0.013	-0.015
Intermediate goods	105.7	0.1	-0.4	-2.8	0.025	-0.097
Energy	128.2	-0.6	-3.6	-4.2	-0.144	-0.870

3. Indices in aggregates of domestic and international markets (IPRI+IPRIX): general and by economic destination of the goods

	Index	% Variation			Effect	
		Monthly	Year to date	Annual	Monthly	Year to date
GENERAL INDEX	108.0	0.1	-1.7	-0.7		
Consumer goods	106.3	0.2	-0.2	-0.9	0.051	-0.043
- Durable consumer goods	100.7	-0.1	-0.1	-0.8	-0.003	-0.002
- Non-durable consumer goods	107.3	0.2	-0.2	-1.0	0.053	-0.041
Capital goods	101.6	0.0	-0.2	-0.8	-0.010	-0.046
Intermediate goods	106.0	0.1	-0.3	-2.4	0.045	-0.088
Energy	119.6	0.2	-7.4	2.1	0.035	-1.559

4. Export indices: general index and by branch of activity (CNAE 2009)

	Index	Monthly		Annual
		% Variation	Effect	% Variation
GENERAL INDEX	102.8	0.0		-2.8
B. Mining and quarrying industries	128.1	-0.4	-0.002	-3.2
Extraction of metallic ores	171.1	-1.1	-0.002	-8.8
Other mining and quarrying	105.8	0.0	0.000	-0.3
C. Manufacture industry	104.1	0.1	0.083	-2.1
Food industry	110.3	0.7	0.059	-2.7
Manufacture of beverages	106.6	0.2	0.003	-2.9
Tobacco industry	110.9	-0.1	0.000	-4.6
Textile industry	107.6	0.1	0.001	-0.4
Manufacture of garments	102.5	0.6	0.003	-1.1
Leather and footwear industry	110.1	0.2	0.002	0.9
Manufacture of wood and of products of wood and cork, except furniture; basketmaking and wickerwork	107.2	0.1	0.001	0.0
Paper industry	106.6	-0.5	-0.013	0.5
Printing and service activities related to printing	97.7	0.2	0.001	-2.4
Manufacture of coke and refined petroleum products	118.0	0.5	0.020	-1.9
Chemical industry	111.3	0.3	0.027	-1.5
Manufacture of pharmaceutical products	100.8	0.0	-0.002	0.0
Manufacture of rubber and plastic materials	106.4	-0.2	-0.007	-3.3
Manufacture of other non-metallic ore products	103.9	-0.2	-0.005	-0.8
Metallurgy; manufacture of basic iron and steel and of ferro-alloy products	97.6	0.0	-0.001	-5.1
Manufacture of metal products, except machinery and equipment	102.6	0.2	0.008	-0.6
Manufacture of computer, electronic and optical products	77.2	0.4	0.006	-13.7
Manufacture of electrical material and equipment	101.6	0.2	0.008	-1.9
Manufacture of machinery and equipment n.e.c.	104.7	-0.1	-0.006	-0.4
Manufacture of motor vehicles, trailers and semi-trailers	100.7	-0.1	-0.026	-2.2
Manufacture of other transport material	101.8	0.0	0.000	0.0
Manufacture of furniture	104.1	0.5	0.003	0.3
Other manufacturing industries	105.5	0.0	0.000	-0.7
Repair and installation of machinery and equipment	102.5	0.0	0.000	-0.2
D. Supply of electrical energy and gas	37.6	-4.1	-0.044	-43.3

5. Import indices: general index and by branch of activity (CNAE 2009)

	Index	Monthly		Annual
		% Variation	Effect	% Variation
GENERAL INDEX	108.4	-0.1		-2.4
B. Mining and quarrying industries	127.2	-0.1	-0.025	-4.8
Extraction of anthracite, coal and lignite	89.8	-1.2	-0.005	-10.1
Extraction of crude petroleum and natural gas	132.4	-0.1	-0.021	-4.4
Extraction of metallic ores	93.5	-0.1	-0.001	-8.6
Other mining and quarrying	110.1	1.3	0.003	-2.1
C. Manufacture industry	105.1	0.0	-0.033	-1.8
Food industry	115.8	0.1	0.009	-0.9
Manufacture of beverages	104.9	-0.1	-0.001	1.0
Tobacco industry	116.5	0.0	0.000	-1.8
Textile industry	113.8	0.0	0.000	-1.0
Manufacture of garments	108.5	1.3	0.056	-1.2
Leather and footwear industry	109.6	0.3	0.005	-2.4
Manufacture of wood and of products of wood and cork, except furniture; basketmaking and wickerwork	108.6	0.0	0.000	2.3
Paper industry	105.4	0.1	0.002	-1.5
Manufacture of coke and refined petroleum products	121.2	-1.9	-0.119	-2.8
Chemical industry	111.2	0.2	0.016	-1.6
Manufacture of pharmaceutical products	93.8	-0.2	-0.010	-0.7
Manufacture of rubber and plastic materials	109.8	0.0	-0.001	-1.8
Manufacture of other non-metallic ore products	106.4	0.1	0.001	-0.7
Metallurgy; manufacture of basic iron and steel and of ferro-alloy products	99.3	0.0	0.001	-5.4
Manufacture of metal products, except machinery and equipment	104.5	0.0	-0.001	-1.3
Manufacture of computer, electronic and optical products	89.4	-0.8	-0.055	-7.7
Manufacture of electrical material and equipment	101.9	0.1	0.004	-1.6
Manufacture of machinery and equipment n.e.c.	104.8	-0.3	-0.020	-0.2
Manufacture of motor vehicles, trailers and semi-trailers	101.4	0.1	0.012	0.6
Manufacture of other transport material	108.6	2.6	0.065	2.2
Manufacture of furniture	104.2	-0.2	-0.002	-1.0
Other manufacturing industries	103.3	0.1	0.001	-2.0
D. Supply of electrical energy and gas	53.2	1.5	0.000	-33.3

6.Indices in aggregates of domestic and international markets (IPRI+IPRIX): general and by branch of activity (CNAE 2009)

	Index	Monthly		Annual
		% Variation	Effect	% Variation
GENERAL INDEX	108.0	0.1		-0.7
B. Mining and quarrying industries	107.4	0.1	0.001	-0.6
Extraction of anthracite, coal and lignite	111.5	2.1	0.002	4.7
Extraction of metallic ores	171.6	0.4	0.000	-7.1
Other mining and quarrying	102.8	-0.2	-0.002	-0.4
C. Manufacture industry	106.9	0.1	0.129	-1.5
Food industry	111.5	0.4	0.068	-2.7
Manufacture of beverages	108.2	-0.3	-0.009	-0.3
Tobacco industry	115.6	0.0	0.000	1.0
Textile industry	106.8	0.4	0.004	0.3
Manufacture of garments	98.8	0.3	0.003	-0.7
Leather and footwear industry	107.6	0.2	0.001	1.0
Manufacture of wood and of products of wood and cork, except furniture; basketmaking and wickerwork	104.5	0.1	0.001	0.2
Paper industry	105.3	-0.3	-0.006	-0.1
Printing and service activities related to printing	103.7	-0.9	-0.013	-2.1
Manufacture of coke and refined petroleum products	127.0	0.6	0.042	-1.3
Chemical industry	112.2	0.3	0.020	-1.4
Manufacture of pharmaceutical products	100.1	0.2	0.005	0.8
Manufacture of rubber and plastic materials	107.7	0.2	0.007	-1.3
Manufacture of other non-metallic ore products	102.1	0.0	-0.001	-0.2
Metallurgy; manufacture of basic iron and steel and of ferro-alloy products	98.8	0.0	0.000	-5.2
Manufacture of metal products, except machinery and equipme	101.8	0.3	0.018	-0.6
Manufacture of computer, electronic and optical products	84.3	0.2	0.003	-7.6
Manufacture of electrical material and equipment	104.3	0.1	0.004	-1.1
Manufacture of machinery and equipment n.e.c.	103.8	-0.1	-0.003	0.3
Manufacture of motor vehicles, trailers and semi-trailers	100.8	-0.1	-0.007	-1.5
Manufacture of other transport material	100.9	-0.3	-0.008	-0.7
Manufacture of furniture	103.4	0.0	0.000	0.5
Other manufacturing industries	104.7	-0.4	-0.003	-0.4
Repair and installation of machinery and equipment	100.8	0.1	0.002	0.0
D. Supply of electrical energy and gas	115.0	-0.1	-0.010	3.6
E. Supply of water	116.5	0.1	0.001	3.5

For further information see **INEbase** - www.ine.es/en/ All press releases at: www.ine.es/en/prensa/prensa_en.htm

Press Office: Telephone numbers: 91 583 93 63 / 94 08 – Fax: 91 583 90 87 - gprensa@ine.es

Information Area: Telephone number: 91 583 91 00 – Fax: 91 583 91 58 – www.ine.es/infoine