

13 September 2013

Housing Price Index (HPI). Base 2007
Second quarter of 2013

The annual rate of the Housing Price Index stands at –12.0%

The price of housing drops 0.8% as compared with the previous quarter

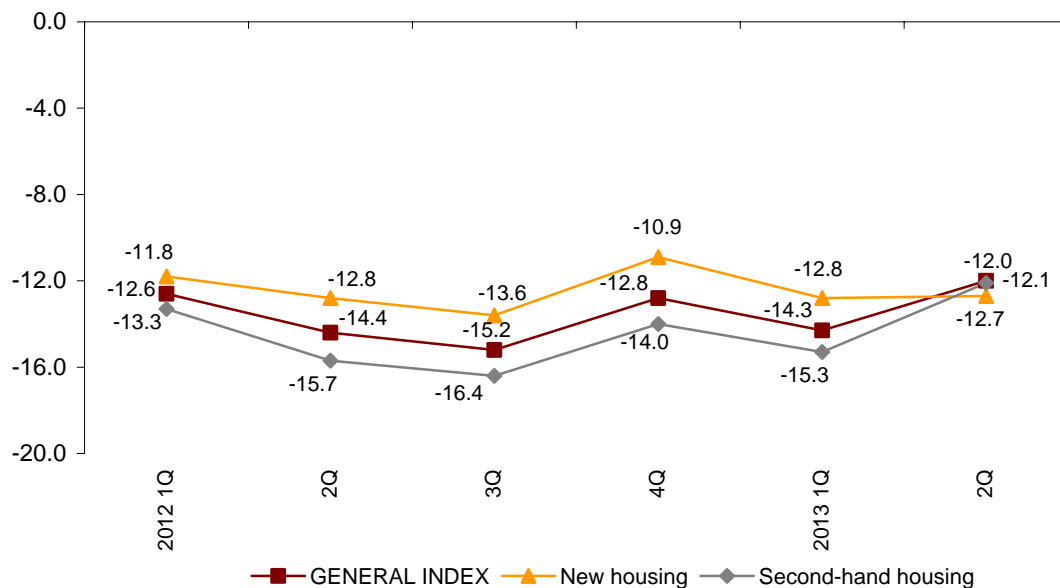
Annual performance of the price of housing

The annual rate of the Housing Price Index (HPI) in the second quarter of 2013 increased over two points, standing at –12.0%.

By type of housing, the annual variation of **new housing** stood at –12.7%, one tenth over that registered in the previous quarter. In turn, the annual variation of the **second-hand housing** increased 3.2 points up to –12.1%.

Annual evolution of the HPI

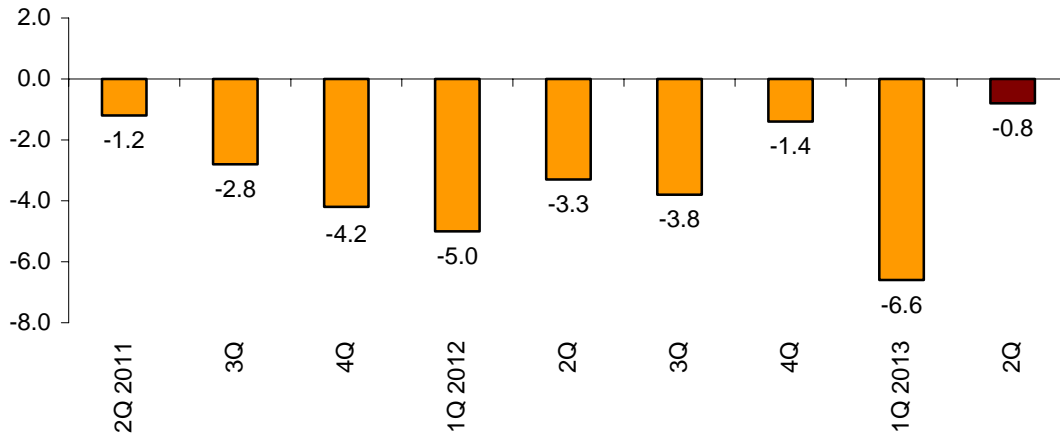
General index, new housing, second-hand housing



Quarterly Housing Price Evolution

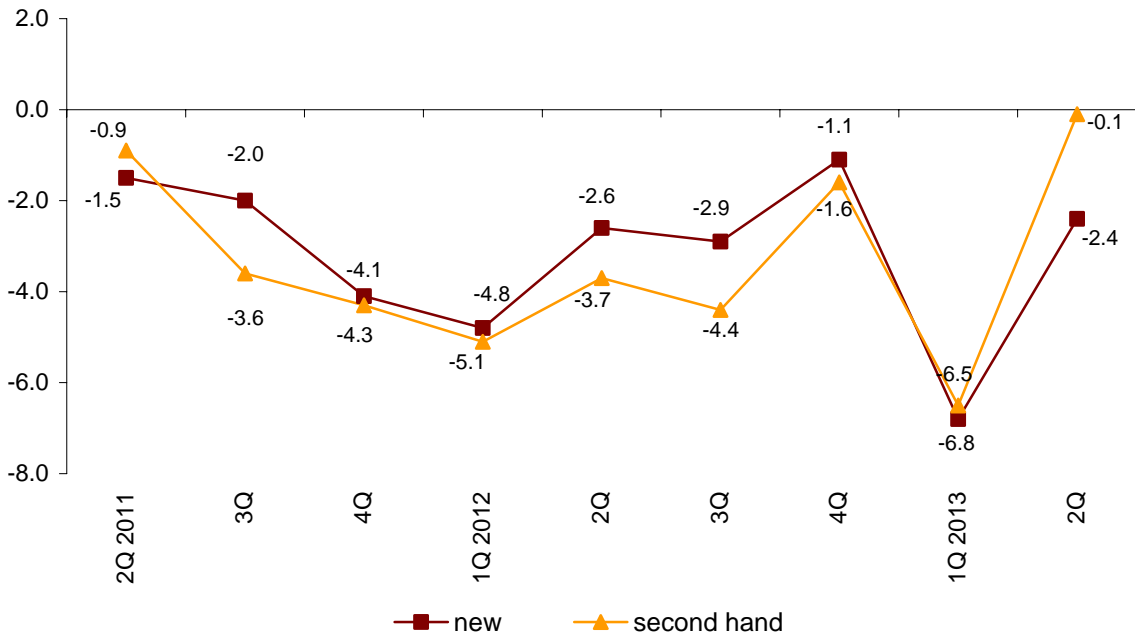
In the second quarter of 2013, the general HPI variation was **-0.8%**. This was the most moderate drop registered since the fourth quarter of 2010.

Quarterly HPI evolution in the last two years



By type of housing, the prices of new housing decreased 2.4% between the first and the second quarter of 2013. In turn, the second-hand housing decreased 0.1% in the quarterly rate.

Quarterly HIP in the last two years by type of housing (new/second hand)



Results by Autonomous Community. Interannual variation rates

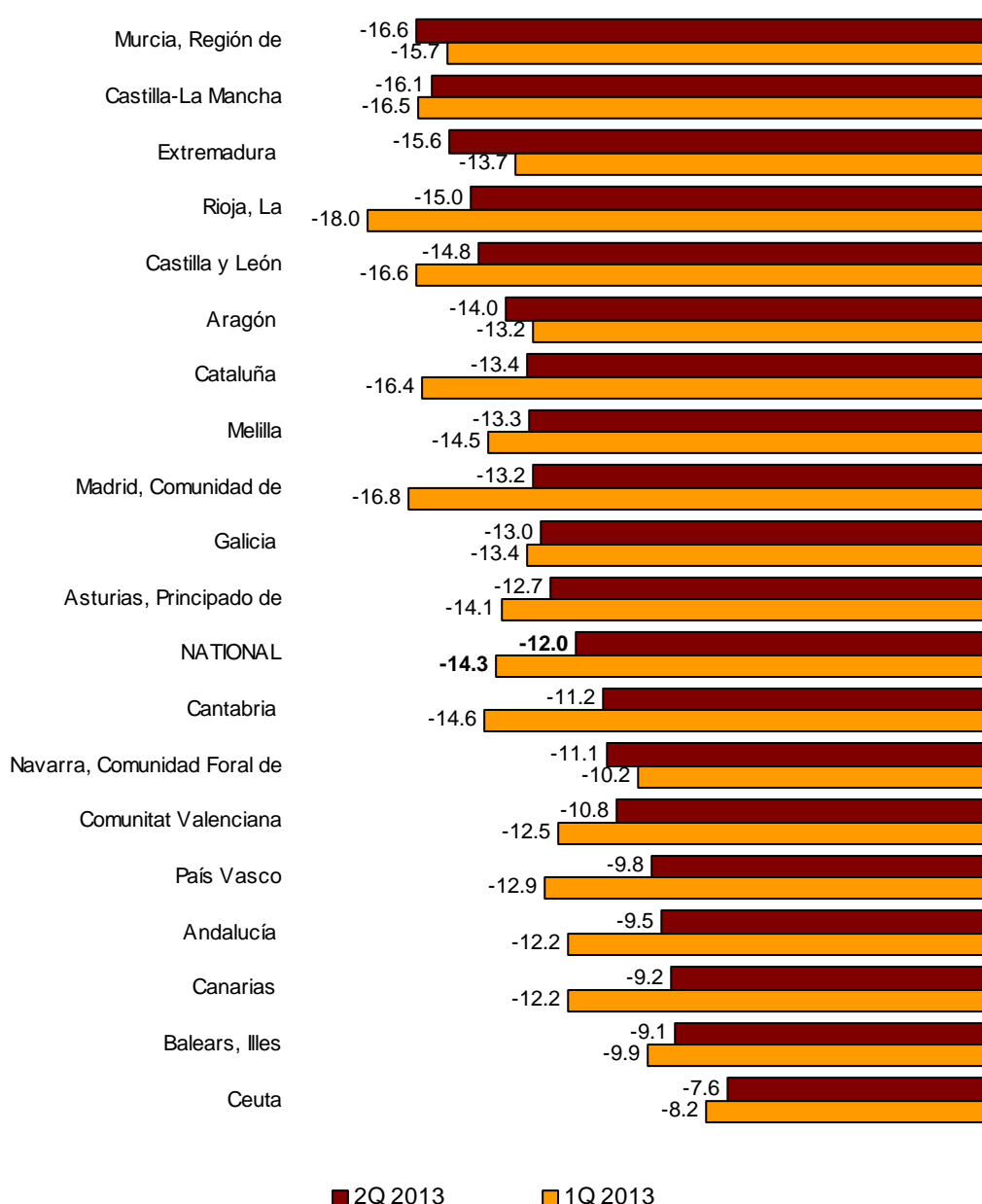
The interannual variation of the HPI was negative in all the Autonomous Communities in the second quarter of 2013.

The greatest decreases in the annual variation were in Extremadura (1.9 points), Región de Murcia (0.9 points) y Comunidad Foral de Navarra (0.9 points) whose annual variations stood at -15.6%, -16.6% and -11.1%, respectively.

In turn, the greatest increases were registered in Comunidad de Madrid (-13.2%) and Cantabria (-11.2%), whose rates increased 3.6 and 3.4 points, respectively.

Annual rates of the HIP, base 2007

General index by Autonomous City and Community



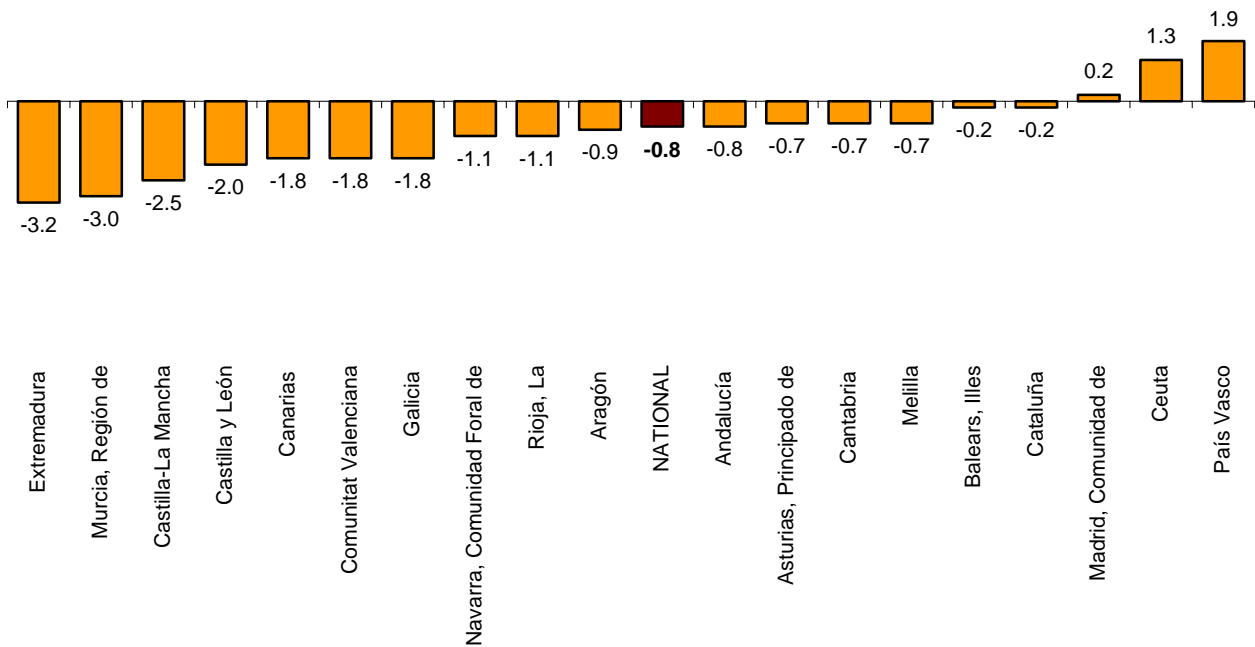
Results by Autonomous Community. Quarterly variation rates

In the second quarter of 2013, the quarterly variation of the HPI was negative in all the Autonomous Communities except País Vasco (1.9%) and Comunidad de Madrid (0.2%).

The greatest decreases were registered in Extremadura (-3.2%) and Región de Murcia (-3.0%).

Quarterly rates of the HIP, base 2007

General index by Autonomous City and Community



13 September 2013

Housing price indices. Base 2007

Second quarter of 2013

1. National index: general and by type of housing

Housing	Index	% Variation			Effect	
		Quarterly	Year-to-date	Annual	Quarterly	Year-to-date
GENERAL INDEX	64.2	-0.8	-7.3	-12.0		
New housing	71.4	-2.4	-9.0	-12.7	-0.676	-2.588
Second-hand housing	58.1	-0.1	-6.6	-12.1	-0.076	-4.702

2. General Index by Autonomous Community

	Index	% Variation		
		Quarterly	Year-to-date	Annual
Andalucía	73.2	-0.8	-6.1	-9.5
Aragón	57.8	-0.9	-9.8	-14.0
Asturias, Principado de	70.6	-0.7	-8.9	-12.7
Balears, Illes	66.5	-0.2	-6.1	-9.1
Canarias	71.4	-1.8	-5.4	-9.2
Cantabria	62.0	-0.7	-7.5	-11.2
Castilla y León	67.7	-2.0	-10.6	-14.8
Castilla-La Mancha	68.7	-2.5	-12.8	-16.1
Cataluña	54.4	-0.2	-7.5	-13.4
Comunitat Valenciana	67.6	-1.8	-5.6	-10.8
Extremadura	77.1	-3.2	-11.7	-15.6
Galicia	73.4	-1.8	-8.7	-13.0
Madrid, Comunidad de	58.1	0.2	-6.9	-13.2
Murcia, Región de	72.2	-3.0	-12.1	-16.6
Navarra, Comunidad Foral de	58.6	-1.1	-9.0	-11.1
País Vasco	61.3	1.9	-4.9	-9.8
Rioja, La	60.0	-1.1	-9.8	-15.0
Ceuta	70.4	1.3	-4.3	-7.6
Melilla	74.0	-0.7	-9.5	-13.3

3. New housing Index by Autonomous Community

	Index	% Variation		
		Quarterly	Year-to-date	Annual
Andalucía	81.4	-2.2	-6.7	-10.1
Aragón	64.0	-2.3	-12.5	-15.1
Asturias, Principado de	74.5	-1.7	-10.9	-13.6
Balears, Illes	76.0	-1.3	-7.9	-9.6
Canarias	75.7	-4.5	-9.0	-12.0
Cantabria	66.2	-2.6	-7.6	-10.5
Castilla y León	74.0	-3.6	-11.2	-14.9
Castilla-La Mancha	71.5	-3.9	-13.8	-17.7
Cataluña	58.9	-3.7	-11.5	-15.1
Comunitat Valenciana	75.2	-2.3	-4.2	-9.4
Extremadura	81.6	-6.2	-14.7	-18.3
Galicia	78.7	-2.3	-8.8	-12.6
Madrid, Comunidad de	62.7	-3.3	-11.4	-16.1
Murcia, Región de	75.7	-5.6	-14.6	-18.4
Navarra, Comunidad Foral de	62.1	-4.3	-12.6	-12.1
País Vasco	70.6	4.0	-3.1	-4.5
Rioja, La	62.9	-0.9	-9.8	-14.9

4. Second-hand housing Index by Autonomous Community

	Index	% Variation		
		Quarterly	Year-to-date	Annual
Andalucía	65.6	-0.2	-5.9	-9.3
Aragón	52.1	-0.1	-8.0	-13.5
Asturias, Principado de	65.0	0.0	-7.3	-12.4
Balears, Illes	61.2	0.1	-5.5	-9.2
Canarias	66.0	-1.1	-4.5	-8.8
Cantabria	57.9	0.7	-7.3	-12.3
Castilla y León	59.0	-1.0	-10.3	-14.9
Castilla-La Mancha	61.9	-1.5	-12.0	-14.4
Cataluña	51.8	0.6	-6.5	-13.3
Comunitat Valenciana	61.5	-1.7	-6.1	-11.2
Extremadura	70.3	-1.8	-10.2	-14.4
Galicia	65.0	-1.3	-8.7	-13.6
Madrid, Comunidad de	54.5	1.4	-5.4	-12.5
Murcia, Región de	65.1	-1.6	-10.8	-16.1
Navarra, Comunidad Foral de	53.0	1.0	-6.5	-11.8
País Vasco	56.1	0.5	-6.1	-13.1
Rioja, La	56.3	-1.3	-9.7	-15.2