

28 February 2019

**Non-hotel Tourist Accommodation Occupancy Survey**  
January 2019. Provisional data

**Overnight stays in non-hotel tourist accommodation decrease 3.7%  
in January, as compared with the same month of 2018**

Overnight stays in non-hotel tourist accommodation (holiday dwellings, tourist campsites, rural tourism accommodation and youth hostels) exceeded 5.4 million in January, 3.7% less than in the same month of 2018. Overnight stays by residents decreased by 1.8% and those by non-residents did so by 4.2%.

The average stay stood at 6.3 overnight stays per traveller.

Travellers and overnight stays in collective non-hotel tourist accommodation during the month of January were:

January 2019	Arrivals	Overnight stays
Residents	366,093	1,126,818
EU Residents (excluding Spain)	385,690	3,662,725
Rest of the world	104,408	635,086
<b>TOTAL</b>	<b>856,191</b>	<b>5,424,629</b>

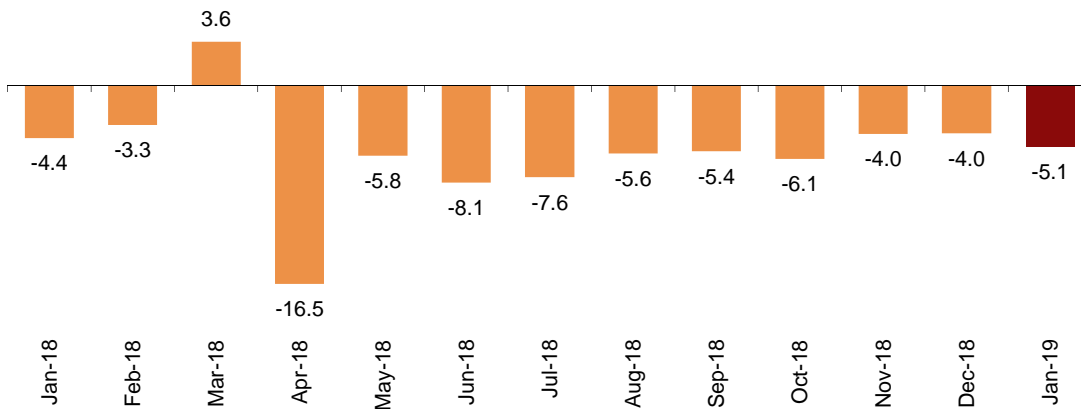
**Holiday dwellings**

Overnight stays in holiday dwellings decreased by 5.1% in January. Resident overnight stays decreased by 2.5% and non-resident overnight stays did so by 5.5%.

The average stay decreased by 2.1% as compared with January 2018, standing at 7.0 overnight stays per traveller.

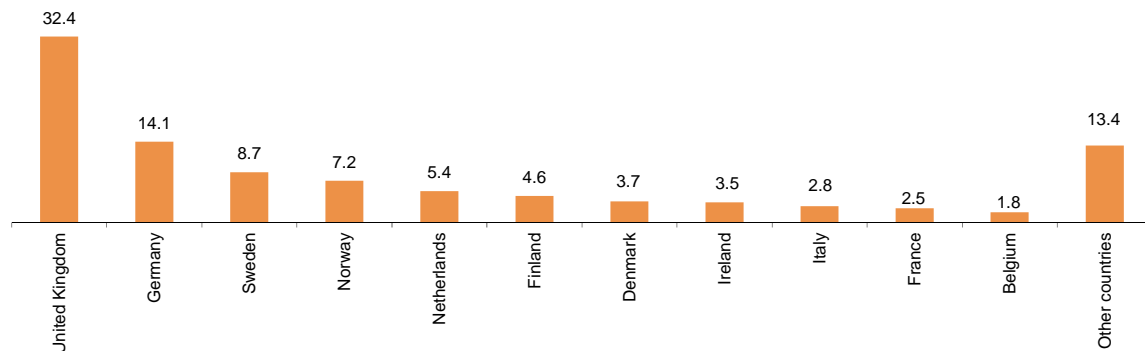
In January, 30.7% of the bed-places available for holiday dwellings were occupied, 5.3% less than in the same month of 2018. The weekend occupancy rate by bed-places stood at 32.4%, with a decrease of 4.8%.

**Annual variation rate for overnight stay**  
Percentage



Non-resident overnight stays in holiday dwellings represented 84.6% of the total. The United Kingdom was the main country of origin, with more than one million overnight stays, 4.4% more than in January 2018. The following country of origin was Germany, with 463,519 overnight stays, 9.9% less.

**Distribution of non-residents overnight stays. Main country of residence**  
Percentage



Canarias was the preferred holiday dwelling destination, with 2.5 million overnight stays and a decrease of 7.3% as compared with January 2018. These islands also reached the highest occupancy rate, with 79.6% of holiday dwellings offered.

By tourist areas, the island of Gran Canaria was the preferred destination, with 865,287 overnight stays and an occupancy rate of 86.6% of holiday dwellings offered.

The tourist sites with the highest number of overnight stays in January were San Bartolomé de Tirajana, Arona and Mogán.

## Tourist campsites

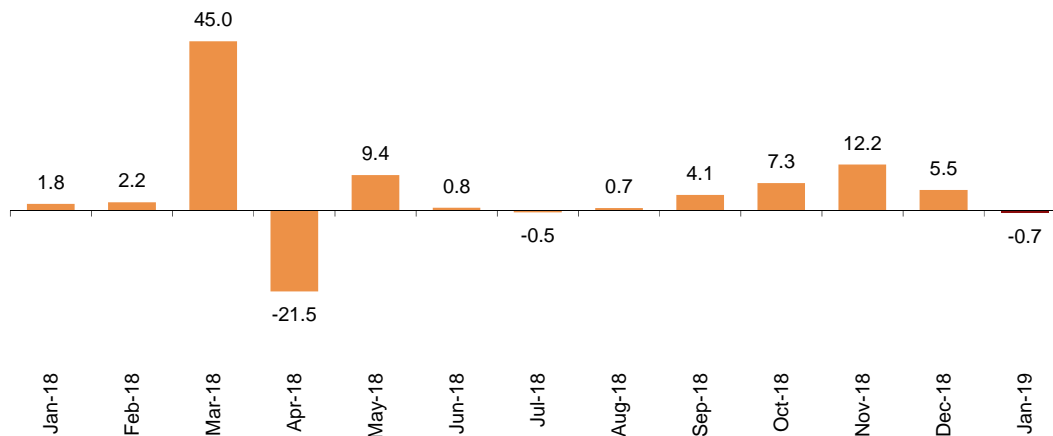
Overnight stays at tourist campsites registered a decrease of 0.7% in January as compared with the same month of the previous year. Overnight stays by residents dropped by 6.7%, whilst those by non-residents increased by 0.7%.

During the month of January, 38.7% of the offered pitches were occupied, 3.1% more than in the same month of 2018. The weekend occupancy rate by pitch reached 39.6%, with an annual increase of 3.3%.

81.6% of overnight stays on tourist campsites were made by non-residents. The United Kingdom was the main country of origin with 35.8% of overnight stays by non-residents, 3.6% more than in January 2018.

## Annual variation rate for overnight stays

Percentage



Comunitat Valenciana was the preferred destination for tourist campsites, with 592,017 overnight stays, representing an annual increase of 0.6%. La Rioja reached the highest occupancy rate, with 63.3% of the pitches offered.

By tourist areas, Costa Blanca was the preferred destination, with 334,340 overnight stays and an occupancy rate of 83.8% of the pitches offered.

The tourist sites with the most overnight stays were Benidorm, Cartagena and Oliva.

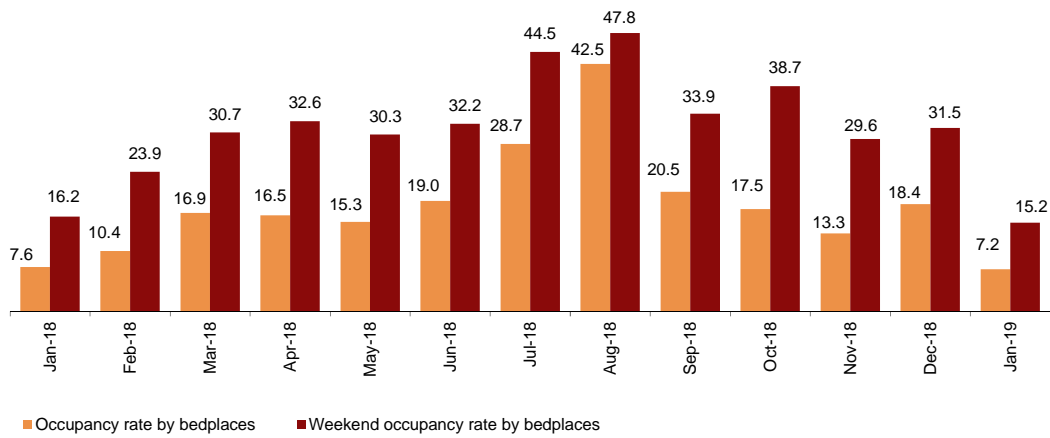
## Rural tourism accommodation

Overnight stays in rural tourism accommodation presented an annual decrease of 3.3% in January. Resident overnight stays decreased by 1.3% and non-resident overnight stays did so by 9.7%.

In rural tourism accommodation, 7.2% of the bed-places were occupied, 5.5% less than January 2018. The weekend occupancy rate stood at 15.2%, with an annual decrease of 6.1%.

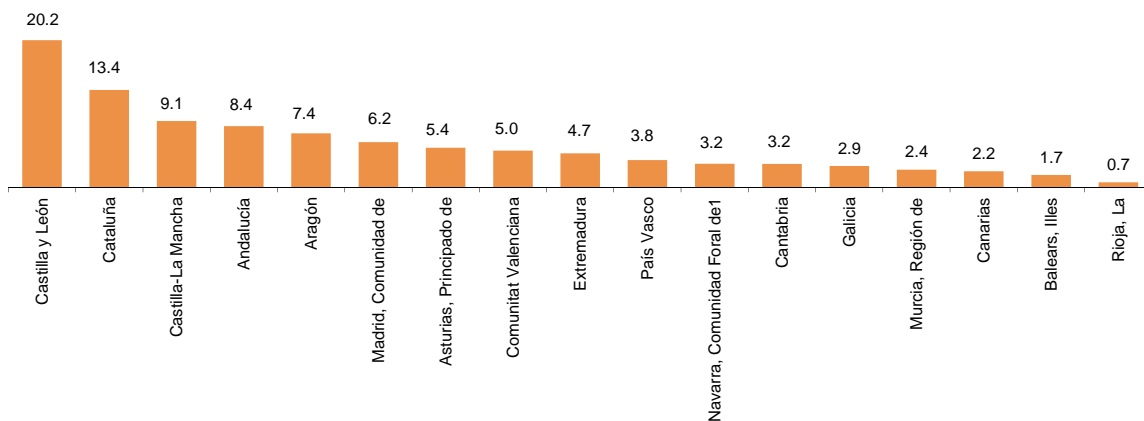
## Occupancy rate

Percentage



By Autonomous Community, Castilla y León was the preferred destination, with 51,352 overnight stays, 2.2% more than in January 2018. Canarias reached the highest occupancy rate, with 35.5% of the bed-places offered.

By tourist area, Pirineus was the main destination, with 15,510 overnight stays. The Corona Forestal Natural Park reached the highest occupancy rate, with 46.3% of the bed-places offered.



## Distribution of overnight stays: residents

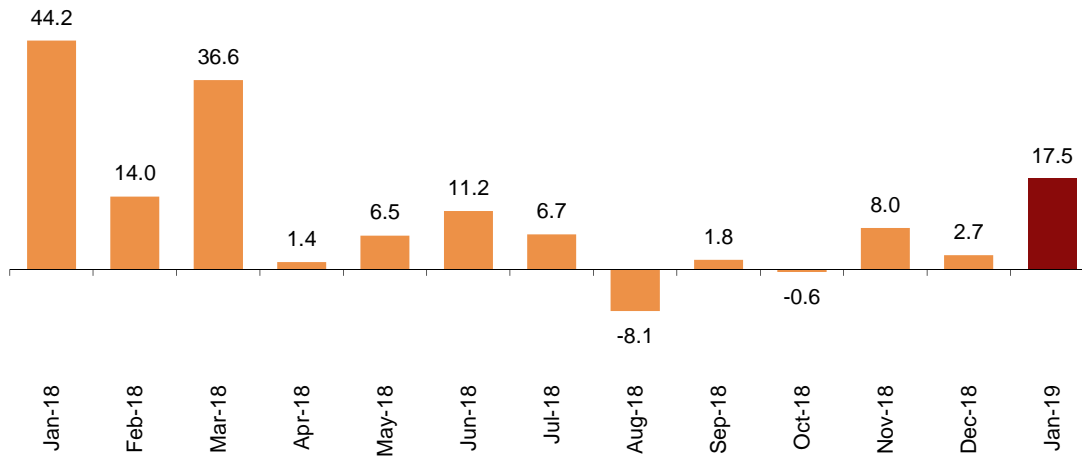
Percentage

## Youth Hostels

Overnight stays in hostels registered an annual increase of 17.5% in January. Resident overnight stays grew by 16.3%, and those of non-residents by 19.6%.

### Annual variation rate for overnight stays

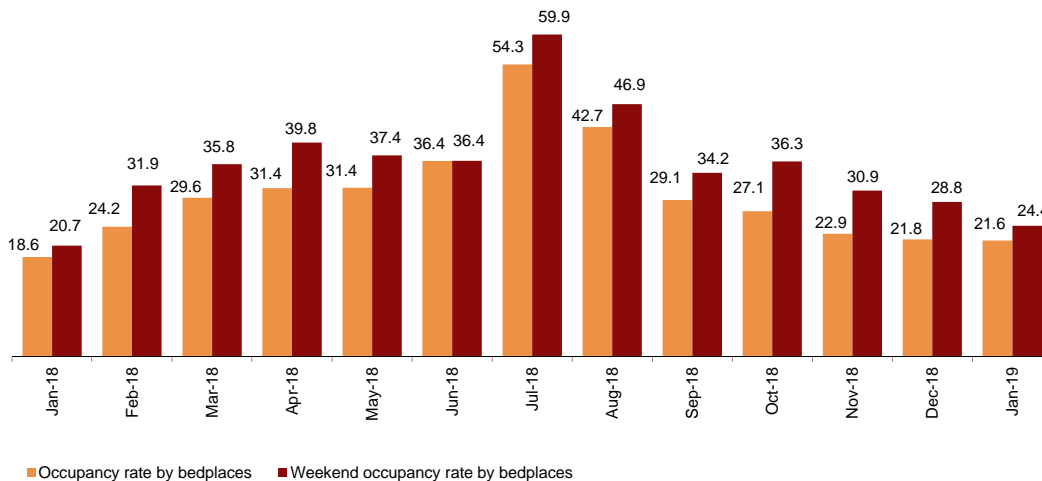
Percentage



21.6% of the bedplaces were occupied, 16.6% more than in January 2018. The weekend occupancy rate reached 24.4%, with a 17.9% increase.

### Occupancy rate

Percentage



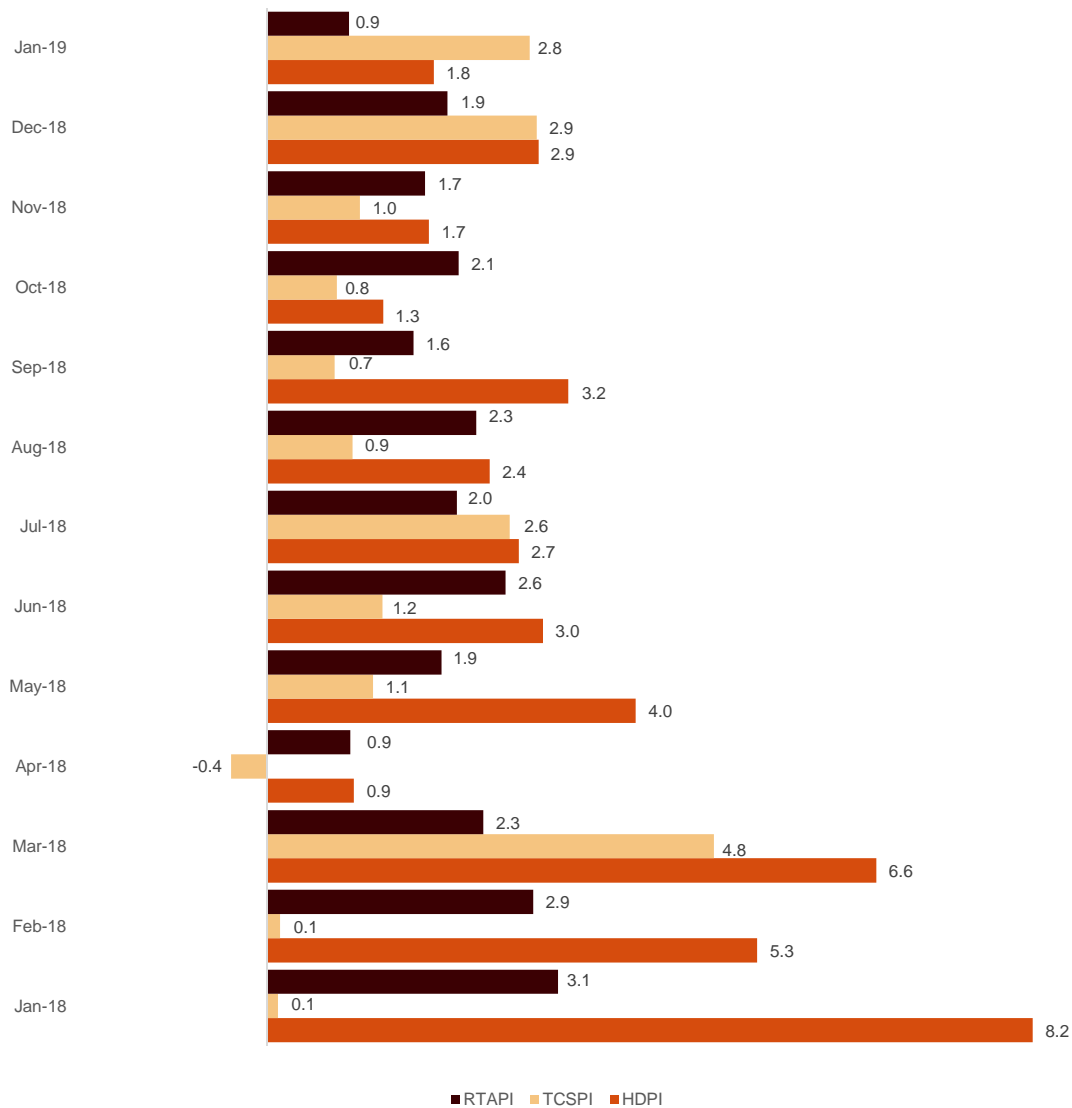
By Autonomous Community, Cataluña was the preferred destination, with 41,454 overnight stays, 29.0% more than in January 2018. Canarias reached the highest occupancy rate, with 52.5% of the bed-places offered.

**Price indices**

The Holiday Dwelling Price Index (HDPI) increased by 1.8% in January compared to the same month in 2018.

For its part, the Tourist Campsite Price Index (TCPI) increased by 2.8% in its annual rate and the Rural Tourism Accommodation Price Index (RTAPI) recorded an increase of 0.9%.

**Prices Indices. Annual variation rate**  
Percentage



## Evolution of travellers and overnight stays in all Spanish collective tourist accommodation

In January, overnight stays in Spanish collective tourist accommodation (hotels<sup>1</sup>, holiday dwellings, tourist campsites, rural tourism accommodation and youth hostels) decreased by 0.7% in the annual rate. Resident overnight stays grew by 0.3%, while non-resident overnight stays reduced by 1.1% as compared with January 2018.

The average stay decreased 1.9%, and stood at 3.4 overnight stays per traveller.

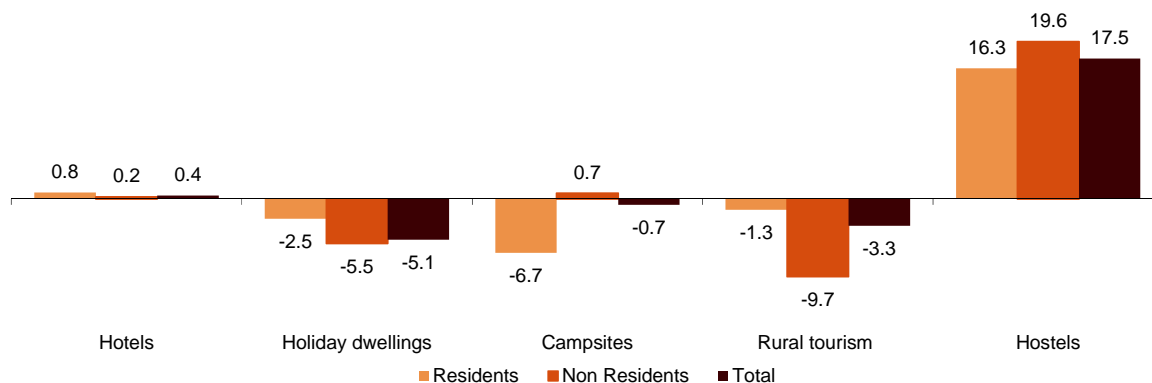
Travellers and overnight stays in collective tourist accommodation were:

January 2019	Holiday dwellings	Campsites	Rural T.	Hostels	Non-hotel	Hotels	Total
<b>Arrivals</b>	555,630	123,455	136,277	40,828	856,190	5,228,870	6,085,060
Residents	158,467	64,236	118,046	25,344	366,093	2,747,341	3,113,434
Non-residents	397,163	59,219	18,232	15,484	490,098	2,481,528	2,971,626
<b>Overnight stays</b>	3,898,248	1,080,037	313,246	133,100	5,424,631	15,462,415	20,887,046
Residents	600,531	198,650	243,782	83,855	1,126,818	5,502,144	6,628,962
Non-residents	3,297,716	881,387	69,464	49,244	4,297,811	9,960,271	14,258,082

Of the total overnight stays made in collective tourist accommodation, 74% corresponded to hotels and 26% to non-hotel tourist accommodation.

### Overnight stays in collective tourist accommodation. Annual variation rate

Percentage



The main countries of origin for all types of regulated tourist accommodation were the United Kingdom (with 25.7% of the total number of non-resident overnight stays), Germany (17.2%) and France (5.6%).

Canarias was the preferred destination, with 8.1 million overnight stays (4.8% less than in January 2018). It was followed by Andalucía, with over 2.9 million overnight stays (and an increase of 4.6%) and Cataluña, with 2.5 million, (and an annual increase of 4.8%).

<sup>1</sup> The press release corresponding to Hotel Tourism Short-Term Trends was published on 22 February.

## Revision and updating of data

Coinciding with today's publication, the INE has updated the data for January 2018 of the Occupancy Survey in: Holiday Dwellings (HDOS), Campsites (COS), Rural Tourism Accommodation (RTAOS) and Hostels (HOS). As well as the Holiday Dwelling Price Index (HDPI), the Tourist Campsite Price Index (TCPI) and the Rural Tourism Accommodation Price Index (RTAPI).

## Methodological note

The main objective of the Holiday Dwelling Occupancy Survey (HDOS) is to ascertain the behaviour of a series of variables that make it possible to describe the segment that occupies this type of accommodation within the tourist sector, both from the point of view of supply and demand.

The Holiday Dwelling Price Index (HDPI) is a statistical measure of the monthly evolution of the prices that holiday dwelling apply to their clients.

**Type of operation:** monthly continuous survey.

**Population scope:** holiday dwellings and/or companies operating holiday dwellings.

**Geographical scope:** the entire national territory, with the exception of Ceuta and Melilla where there are no establishments of this type.

**Reference period of the results:** the month.

**Reference period of the information:** The consultation of basic data refers to a fortnight of the month, chosen randomly, in such a way that among all the establishments they cover the complete month.

**Type of sampling:** stratified sampling by province and size of establishment, and for Canarias and Illes Balears stratified at island-size level.

**Collection method:** questionnaire filled in directly by the establishment.

For more information on these statistical operations, you can consult the [methodology and the standardised methodological report](#) for each of them in INEbase.

The main objective of the Campsite Occupancy Survey (COS) is to ascertain the behaviour of a series of variables that make it possible to describe the segment that occupies this type of accommodation within the tourist sector, both from the point of view of supply and demand.

The Tourist Campsite Price Index (TCPI) is a statistical measure of the monthly evolution of the prices that campsites apply to their clients.

**Type of operation:** monthly continuous survey.

**Population scope:** camping establishments.

**Geographical scope:** the entire national territory, with the exception of Ceuta and Melilla where there are no establishments of this type.

**Reference period of the results:** the month.



**Reference period of the information:** seven consecutive days of each month, chosen randomly in such a way that all the establishments cover the whole month.

**Sample size:** approximately 1200 establishments.

**Type of sampling:** comprehensive survey in all provinces.

**Collection method:** questionnaire filled in directly by the establishment.

For more information on these statistical operations, you can consult the [methodology and the standardised methodological report](#) for each of them in INEbase.

The main objective of the Rural Tourism Accommodation Occupancy Survey (RTAOS) is to ascertain the behaviour of a series of variables that make it possible to describe the fundamental characteristics of this type of accommodation within the tourist sector, both from the point of view of supply and demand.

The Rural Tourism Accommodation Price Index (RTAPI) is a statistical measure of the monthly evolution of the prices that entrepreneurs of this type of accommodation apply to their clients.

**Type of operation:** monthly continuous survey.

**Population scope:** rural tourism establishments registered as such in the corresponding register of each Autonomous Community.

**Geographical scope:** the entire national territory, with the exception of Ceuta and Melilla where there are no establishments of this type.

**Reference period of the results:** the month.

**Reference period of the information:** The consultation of basic data refers to all the days of the month.

**Type of sampling:** comprehensive survey in all provinces except those where the population size is large enough to take a sample.

**Collection method:** questionnaire filled in directly by the establishment.

For more information on these statistical operations, you can consult the [methodology and the standardised methodological report](#) for each of them in INEbase.

The main objective of the Hostels Occupancy Survey (HOS) is to ascertain the behaviour of a series of variables that make it possible to describe the fundamental characteristics of this type of accommodation within the tourist sector, both from the point of view of supply and demand.

For more information on this statistical operation, you can consult the [methodology and the standardised methodological report](#) in INEbase.

---

For further information see **INEbase:** [www.ine.es/en/](http://www.ine.es/en/) Twitter: [@es\\_ine](https://twitter.com/es_ine)

All press releases at: [www.ine.es/en/prensa/prensa\\_en.htm](http://www.ine.es/en/prensa/prensa_en.htm)

**Press office:** Telephone numbers: (+34) 91 583 93 63 /94 08 – [gprensa@ine.es](mailto:gprensa@ine.es)

**Information Area:** Telephone number: (+34) 91 583 91 00 – [www.ine.es/infoine/?L=1](http://www.ine.es/infoine/?L=1)

---

## Tourist Accommodation Occupancy Survey (Holiday Dwellings)

January 2019

Provisional data

28th February 2019

### 1. Travellers, overnight stays and average stay by Autonomous Cities and Communities

Autonomous Cities and Communities	Travellers			Overnight stays			Average stay
	Total	Residents in Spain	Residents 846	Total	Residents in Spain	Residents abroad	
<b>TOTAL</b>	555,630	158,467	397,163	3,898,248	600,531	3,297,716	7.02
Andalucía	126,595	52,116	74,479	477,402	126,710	350,692	3.77
Aragón	9,162	8,168	994	27,099	23,032	4,067	2.96
Asturias, Principado de	1,122	1,084	38	3,180	3,066	114	2.83
Balears, Illes	2,854	852	2,002	28,577	5,930	22,647	10.01
Canarias	270,123	21,846	248,277	2,547,778	121,228	2,426,550	9.43
Cantabria	3,304	3,190	114	9,636	8,875	761	2.92
Castilla y León	7,411	6,565	846	19,487	16,314	3,172	2.63
Castilla - La Mancha	4,027	3,571	456	17,924	14,800	3,124	4.45
Cataluña	29,544	15,215	14,329	175,737	94,782	80,955	5.95
Comunitat Valenciana	52,260	15,959	36,301	384,345	75,034	309,311	7.35
Extremadura	3,852	3,133	718	6,747	5,813	933	1.75
Galicia	4,031	3,463	568	9,905	8,606	1,299	2.46
Madrid, Comunidad de	30,918	16,125	14,793	127,228	60,674	66,554	4.12
Murcia, Región de	2,981	1,961	1,020	29,948	14,751	15,197	10.05
Navarra, Comunidad Foral de	1,778	1,010	768	7,247	4,166	3,081	4.08
País Vasco	3,964	2,570	1,394	21,955	12,849	9,106	5.54
Rioja, La	1,705	1,640	65	4,053	3,901	152	2.38
Ceuta	-	-	-	-	-	-	-
Melilla	-	-	-	-	-	-	-
Annual rate	-3.01	-2.48	-3.22	-5.08	-2.47	-5.54	-2.13
Cumulative annual rate	-3.01	-2.48	-3.22	-5.08	-2.47	-5.54	-2.13

### 2. Capacity, occupancy and number of staff by Autonomous Cities and Communities

Autonomous Cities and Communities	Capacity		Level of occupancy				Employed personnel
	Estimated bedplaces	Estimated Holiday dwelling	Per bedplaces	Per bedplaces at weekend	Per Holiday dwelling	Per Holiday dwelling at weekend	
<b>TOTAL</b>	408,833	108,677	30.72	32.37	52.70	54.57	23,025
Andalucía	66,882	17,354	23.09	26.95	37.24	41.97	4,069
Aragón	7,784	1,753	11.22	18.09	18.06	26.16	516
Asturias, Principado de	3,538	884	2.90	3.54	5.54	6.68	230
Balears, Illes	3,134	873	33.30	32.26	52.14	48.37	208
Canarias	152,027	47,329	53.76	54.05	79.59	80.02	11,456
Cantabria	3,797	1,018	8.19	10.22	14.08	16.81	369
Castilla y León	5,413	1,242	11.61	18.64	21.50	28.80	465
Castilla - La Mancha	4,853	1,223	11.91	16.29	20.29	25.81	560
Cataluña	30,939	7,304	18.31	20.89	31.52	33.92	877
Comunitat Valenciana	99,675	20,761	12.44	13.22	27.29	28.44	2,259
Extremadura	2,261	532	9.62	16.17	14.47	23.21	270
Galicia	3,858	999	8.23	12.00	18.56	23.93	225
Madrid, Comunidad de	9,718	3,854	42.09	45.42	60.32	62.72	545
Murcia, Región de	7,766	1,793	12.44	13.05	28.35	29.45	249
Navarra, Comunidad Foral de	1,774	410	13.16	12.85	25.09	22.44	392
País Vasco	3,891	1,015	18.16	21.04	37.38	40.12	238
Rioja, La	1,523	330	8.59	18.62	18.57	32.16	97
Ceuta	-	-	-	-	-	-	-
Melilla	-	-	-	-	-	-	-
Annual rate	0.46	-0.16	-5.27	-4.82	-3.84	-3.67	-1.31
Cumulative annual rate	0.46	-0.16	-5.27	-4.82	-3.84	-3.67	-1.31

### 3. Travellers, overnight stays, capacity, occupancy, total number of staff with greater number of overnight stays<sup>1</sup>

Provinces	Travellers		Overnight stays			Capacity		Level of occupancy			Employed personnel
	Residents in Spain	Residents abroad	Residents in Spain	Residents abroad	Average stay	Estimated bed-places	Estimated holiday dwelling	Per bed-places	Per Holiday dwelling	Per Holiday dwelling at weekend	
Palmas, Las	12,330	156,584	70,357	1,557,575	9.64	99,193	30,856	52.59	78.97	79.49	7,244
Santa Cruz de Tenerife	9,515	91,693	13,783	868,975	9.09	52,834	16,474	55.95	80.74	80.99	4,212
Málaga	19,326	42,776	48,859	264,145	5.04	40,774	10,429	24.75	41.25	44.58	2,533
Alicante\Alacant	7,663	26,176	41,525	263,345	9.01	73,466	15,531	13.40	29.42	30.53	1,685
Barcelona	6,122	12,210	70,979	70,543	7.72	9,726	2,944	46.95	64.94	67.18	455
Sevilla	12,406	19,482	30,517	50,075	2.53	6,293	1,857	41.05	59.55	67.23	502
Valencia\València	5,743	9,563	19,894	37,501	3.75	13,325	2,838	13.89	29.48	30.79	422
Granada	11,499	7,952	24,343	20,673	2.31	5,842	1,579	24.67	31.77	43.52	484
Castellón\Castelló	2,553	562	13,615	8,466	7.09	12,884	2,392	5.53	10.97	12.22	152
Girona	3,268	1,467	7,812	7,138	3.16	16,152	3,285	2.99	5.93	7.13	239
Lleida	4,582	271	13,783	954	3.04	2,976	672	15.96	23.17	31.14	104
Huesca	4,176	158	11,673	531	2.82	4,590	1,001	8.57	10.78	17.22	241
Cádiz	2,318	2,176	6,263	5,476	2.61	3,237	825	11.83	19.49	23.08	197
Almería	1,208	427	3,982	6,868	6.64	6,038	1,407	6.05	12.35	13.15	95
Gipúzkoa	924	907	3,952	5,736	5.29	2,185	541	14.28	25.06	27.04	131

<sup>1</sup> Provinces belonging to uniprovincial Autonomous Communities have not been included because they are reflected in previous tables.

### 4. Travellers, overnight stays, capacity, occupancy, total number of staff from tourist areas with greater number of overnight stays

Tourist Areas	Travellers		Overnight stays			Capacity		Level of occupancy			Employed personnel
	Residents in Spain	Residents abroad	Residents in Spain	Residents abroad	Average stay	Estimated bed-places	Estimated holiday dwelling	Per bed-places	Per Holiday dwelling	Per Holiday dwelling at weekend	
Isla de Gran Canaria	4,881	78,590	25,488	839,799	10.37	49,804	15,144	55.77	86.61	86.86	3,529
Isla de Tenerife	7,310	85,613	41,238	798,805	9.04	46,871	14,450	57.59	82.90	83.03	3,692
Isla de Lanzarote	4,088	54,933	28,421	505,596	9.05	31,421	9,227	54.40	83.79	84.66	2,595
Costa Blanca	7,523	25,487	40,546	254,065	8.92	70,641	14,986	13.45	29.41	30.52	1,629
Costa del Sol	13,984	39,497	40,085	253,339	5.49	38,335	9,751	24.68	41.80	44.83	2,385
Isla de Fuerteventura	3,362	23,061	16,447	212,179	8.65	17,968	6,485	40.62	54.27	54.94	1,121
Costa Barcelona	2,198	1,392	58,594	28,355	24.22	4,877	1,694	57.51	69.68	70.99	177
Barcelona	3,288	10,784	9,924	41,369	3.64	4,358	1,102	37.83	62.71	66.92	263
Isla de La Palma	1,255	3,116	5,624	37,174	9.79	2,639	926	52.02	74.71	75.78	270
Isla de La Gomera	682	2,853	2,735	32,384	9.94	2,934	988	38.57	60.83	61.97	224

### 5. Travellers, overnight stays, capacity, occupancy, total number of staff from tourist sites with greater number at overnights stays

Tourist sites	Travellers		Overnight stays			Capacity		Level of occupancy			Employed personnel
	Residents in Spain	Residents abroad	Residents in Spain	Residents abroad	Average stay	Estimated bed-places	Estimated holiday dwelling	Per bed-places	Per Holiday dwelling	Per Holiday dwelling at weekend	
San Bartolomé de Tirajana	3,082	44,806	17,667	486,182	10.52	29,708	9,158	54.35	83.05	83.39	2,137
Arona	1,670	39,844	9,811	376,587	9.31	20,223	6,375	61.47	82.75	82.97	1,644
Mogán	502	30,130	2,225	328,323	10.79	18,639	5,350	57.05	92.11	92.24	1,274
Tías	1,550	31,016	10,978	293,585	9.35	16,247	4,997	59.90	86.44	87.40	1,225
Adeje	1,352	25,163	11,315	228,312	9.04	14,338	4,079	53.67	86.45	86.46	957
Benidorm	2,107	10,551	11,110	128,610	11.04	16,958	4,234	26.58	52.94	55.04	512
Teguiise	1,399	13,546	9,870	119,167	8.63	8,169	2,446	50.75	80.35	80.37	631
Madrid	15,540	14,783	57,873	64,423	4.03	9,306	3,717	42.25	59.41	61.78	508
Puerto de la Cruz	2,619	9,841	10,589	107,432	9.47	5,390	2,122	69.96	88.09	89.38	490
Antigua	1,552	8,917	8,666	80,327	8.50	7,355	2,729	38.37	46.05	46.37	361

## 6. Travellers and overnight stays by countries of residence

Countries	Travellers		Overnight stays	
	Total	%	Total	%
TOTAL	555,630	100.00	3,898,248	100.00
Residents in Spain	158,467	28.52	600,531	15.41
Residents abroad	397,163	71.48	1,303	84.59
Total residents abroad	397,163	100.00	3,297,716	100.00
Total residents in E.U (excluding Spain)	308,691	77.72	2,739,627	83.08
- Germany	37,736	9.50	463,519	14.06
- Austria	1,866	0.47	18,120	0.55
- Belgium	5,741	1.45	57,781	1.75
-Denmark	12,637	3.18	121,017	3.67
- Finland	16,865	4.25	151,897	4.61
- France	14,608	3.68	81,365	2.47
- Greece	243	0.06	1,303	0.04
- Ireland	14,919	3.76	114,367	3.47
- Italy	17,781	4.48	93,054	2.82
- Luxembourg	228	0.06	1,725	0.05
- Netherlands	18,943	4.77	178,907	5.43
- Poland	6,981	1.76	41,513	1.26
- Portugal	2,978	0.75	13,023	0.39
- United Kingdom	120,370	30.31	1,067,643	32.38
- Czech Republic	1,312	0.33	9,580	0.29
- Sweden	29,403	7.40	287,634	8.72
- Other EU countries	6,080	1.53	37,178	1.13
Norway	23,468	5.91	238,861	7.24
Russia	6,468	1.63	40,814	1.24
Switzerland	3,157	0.80	27,639	0.84
Other european countries	5,108	1.29	43,234	1.31
United States of America	7,224	1.82	29,646	0.90
Rest of America	12,607	3.17	73,040	2.21
African countries	7,892	1.99	30,930	0.94
Other countries	22,548	5.68	73,926	2.24

**Tourist Accommodation Occupancy Survey  
Campsite Occupancy Survey (COS)**

January 2019

Provisional data

28th February 2019

**1. Travellers, overnight stays and average stay by category of establishment**

Category	Travellers			Overnight stays			Average stay
	Total	Residents in Spain	Residents abroad	Total	Residents in Spain	Residents abroad	
TOTAL	123,455	64,236	59,219	1,080,037	198,650	881,387	8.75
Luxury and first-class	49,600	23,034	26,566	447,457	81,628	365,830	9.02
Second-class	62,722	34,112	28,610	576,751	98,396	478,355	9.20
Third-class	11,133	7,090	4,043	55,828	18,626	37,202	5.01
Annual rate	-0.07	-5.54	6.63	-0.73	-6.69	0.72	-0.66
Cumulative annual rate	-0.07	-5.54	6.63	-0.73	-6.69	0.72	-0.66

**2. Open establishments, capacity, occupancy and number of staff by category of establishments**

Category	Estimated open establishments	Capacity		Occupied pitches	Occupancy rate per pitch	Weekend occupancy rate	Employed personnel
		Estimated bedplaces	Estimated pitches				
TOTAL	419	250,573	80,157	961,131	38.68	39.60	2,960
Luxury and first-class	113	105,454	32,303	386,685	38.61	40.95	1,349
Second-class	241	128,522	42,095	516,607	39.59	39.81	1,415
Third-class	64	16,597	5,760	57,839	32.39	32.29	195
Annual rate	1.28	-0.67	-0.38	2.70	3.09	3.26	5.11
Cumulative annual rate	1.28	-0.67	-0.38	2.70	3.09	3.26	5.11

**3. Travellers, overnight stays and average stay by Autonomous Cities and Communities**

Autonomous cities and communities	Travellers			Overnight stays			Average stay
	Total	Residents in Spain	Residents abroad	Total	Residents in Spain	Residents abroad	
TOTAL	123,455	64,236	59,219	1,080,037	198,650	881,387	8.75
Andalucía	26,582	9,259	17,323	218,377	31,689	186,688	8.22
Aragón	4,625	3,470	1,156	12,207	10,071	2,135	2.64
Asturias, Principado de	314	-	-	892	-	-	2.84
Balears, Illes	-	-	-	-	-	-	-
Canarias	2,035	1,127	908	8,955	2,427	6,528	4.40
Cantabria	-	-	-	-	-	-	-
Castilla y León	2,858	871	1,987	4,645	2,030	2,615	1.63
Castilla - La Mancha	835	578	257	1,668	1,168	500	2.00
Cataluña	30,780	24,383	6,397	78,294	51,178	27,117	2.54
Comunitat Valenciana	35,468	11,168	24,300	592,017	50,356	541,661	16.69
Extremadura	846	557	289	1,679	1,280	399	1.98
Galicia	108	52	56	226	150	76	2.09
Madrid, Comunidad de	8,590	7,306	1,284	29,531	26,074	3,457	3.44
Murcia, Región de	6,413	2,311	4,102	116,126	8,314	107,812	18.11
Navarra, Comunidad Foral de	1,319	1,044	275	7,398	7,010	388	5.61
País Vasco	1,096	472	625	4,448	2,758	1,689	4.06
Rioja, La	1,541	1,398	143	3,497	3,254	243	2.27
Ceuta	-	-	-	-	-	-	-
Melilla	-	-	-	-	-	-	-

#### 4. Open establishments, capacity, occupancy and number of staff by autonomous cities and communities

Autonomous cities and communities	Estimated open establishments	Capacity		Occupied pitches	Occupancy rate per pitch	Weekend occupancy rate	Employed personnel
		Estimated bedplaces	Estimated pitches				
<b>TOTAL</b>	<b>419</b>	<b>250,573</b>	<b>80,157</b>	<b>961,131</b>	<b>38.68</b>	<b>39.60</b>	<b>2,960</b>
Andalucía	97	54,810	17,490	162,807	30.03	31.55	672
Aragón	37	14,845	4,514	30,829	22.03	22.97	153
Asturias, Principado de	3	2,553	748	1,606	6.92	8.28	19
Balears, Illes	-	-	-	-	-	-	-
Canarias	5	3,544	1,452	7,542	16.75	21.15	22
Cantabria	-	-	-	-	-	-	-
Castilla y León	17	6,842	2,241	9,589	13.81	17.04	37
Castilla - La Mancha	12	3,869	1,180	6,662	18.21	18.11	44
Cataluña	67	40,567	13,250	125,385	30.53	33.19	579
Comunitat Valenciana	102	68,184	21,083	399,043	61.06	61.68	857
Extremadura	6	2,209	870	6,823	25.30	31.64	39
Galicia	14	4,447	1,491	3,262	7.06	5.36	40
Madrid, Comunidad de	18	16,837	5,688	75,674	42.92	41.89	191
Murcia, Región de	17	14,652	4,811	74,334	49.84	52.21	187
Navarra, Comunidad Foral de	10	5,711	1,750	13,297	24.51	24.07	47
País Vasco	8	4,656	1,463	7,835	17.28	24.27	35
Rioja, La	4	5,121	1,583	31,065	63.31	65.30	33
Ceuta	-	-	-	-	-	-	-
Melilla	-	-	-	-	-	-	-

#### 5. Travellers and overnight stays, average stay, capacity, occupancy and number of staff by provinces with the greatest number of overnight stays<sup>1</sup>

Provinces	Travellers		Overnight stays		Average stay	Estimated open establishments	Estimated pitches	Occupancy rate per pitch	Employed personnel
	Residents in Spain	Residents abroad	Residents in Spain	Residents abroad					
	Spain		Spain						
Alicante\Alacant	3,577	13,217	23,203	361,344	22.90	44	10,168	76.55	428
Castellón\Castelló	1,806	7,291	11,312	132,054	15.76	35	6,315	44.02	250
Málaga	1,539	4,916	8,024	87,849	14.85	29	4,733	45.70	213
Valencia\València	5,785	3,792	15,841	48,263	6.69	23	4,599	50.18	179
Almería	1,117	3,432	8,387	42,994	11.29	17	2,584	35.59	102
Girona	9,223	4,385	18,692	20,288	2.86	27	4,775	28.15	256
Granada	1,677	3,109	4,617	23,649	5.91	20	2,631	26.36	97
Cádiz	1,003	3,079	1,922	23,687	6.27	12	2,979	21.73	126
Barcelona	6,605	834	12,134	4,196	2.20	15	3,228	27.86	172
Huelva	2,875	1,845	6,781	6,846	2.89	7	2,384	23.71	63
Lleida	5,001	34	12,349	100	2.47	16	2,953	43.04	81
Tarragona	3,554	1,143	8,002	2,533	2.24	10	2,293	23.11	70
Huesca	1,861	57	5,530	127	2.95	21	3,229	25.34	101
Teruel	1,531	30	3,093	78	2.03	10	843	8.84	30
Gipúzkoa	353	559	1,116	1,068	2.39	5	1,236	13.41	28

<sup>1</sup> Provinces belonging to uniprovincial Autonomous Communities have not been included because they are reflected in previous tables.

**6. Travellers, overnight stays, average stay, open establishments, capacity, occupancy and number of staff from tourist areas with the greatest number of overnight stays**

Tourist areas	Travellers		Overnight stays		Average stay	Estimated open establishments	Estimated pitches	Occupancy rate per pitch	Employed personnel
	Residents in Spain	Residents abroad	Residents in Spain	Residents abroad					
	Costa Blanca	2,039	9,380	12,831					
Costa de Castellón	1,305	6,778	8,025	129,465	17.01	29	5,793	45.31	227
Costa Cálida	1,260	3,104	4,182	98,268	23.48	9	3,824	53.89	151
Costa del Sol	580	4,295	6,297	86,008	18.93	14	3,468	55.75	158
Costa Valencia	2,300	2,335	9,984	41,869	11.19	11	3,086	55.60	117
Costa de Almería	950	3,341	8,109	40,426	11.31	14	2,254	35.68	85
Pirineus	14,607	59	31,483	197	2.16	33	5,437	43.67	192
Costa Brava	3,455	4,351	5,822	20,156	3.33	15	3,178	20.91	204
Costa de la Luz de Cádiz	660	2,776	1,235	23,161	7.10	9	2,413	23.53	108
Costa Tropical	383	1,585	2,067	18,746	10.58	7	1,246	34.53	40
Costa de la Luz de Huelva	2,729	1,800	6,512	6,708	2.92	5	2,239	23.69	58
Costa Daurada	3,259	762	6,947	1,425	2.08	6	1,479	29.60	47
pn Los Alcornocales	297	1,130	756	5,907	4.67	5	904	21.87	40
Costa Barcelona	958	811	1,986	4,159	3.47	4	1,650	15.05	88
Pirineo Aragonés	1,817	57	5,486	127	3.00	19	3,077	24.52	99

**7. Travellers, overnight stays, average stay, open establishments, capacity, occupancy and number of staff from tourist sites with the greatest number at overnights stays**

Tourist sites	Travellers		Overnight stays		Average stay	Estimated open establishments	Estimated pitches	Occupancy rate per pitch	Employed personnel
	Residents in Spain	Residents abroad	Residents in Spain	Residents abroad					
	Benidorm	419	3,490	3,954					
Cartagena	224	1,083	1,711	63,255	31.00	3	2,555	41.98	89
Oliva	135	1,693	4,298	32,233	19.98	5	1,267	51.76	77
Cabanes	105	1,011	1,267	34,082	31.00	4	1,215	50.96	59
Marbella	484	1,628	3,473	30,247	15.97	3	1,313	54.85	69
Peníscola	276	2,636	2,225	31,329	11.52	8	1,340	40.85	42
Benicasim	126	1,675	1,377	29,693	17.25	4	872	58.91	48
Mazarrón	263	1,734	1,248	28,927	15.11	3	882	83.17	43
Vélez-Málaga	50	1,068	510	28,986	26.38	4	839	68.22	53
Calp	103	965	865	25,945	25.10	5	463	95.99	24
Campello, El	412	916	3,488	14,725	13.71	5	375	85.65	32
Níjar	621	1,351	3,203	10,517	6.96	3	542	39.16	33

## 8. Travellers and overnight stays by countries of residence

Countries	Travellers		Overnight stays	
	Total	%	Total	%
TOTAL	123,455	100.00	1,080,037	100.00
Residents in Spain	64,236	52.03	198,650	18.39
Residents abroad	59,219	47.97	881,387	81.61
TOTAL residents abroad	59,219	100.00	881,387	100.00
TOTAL residents in EU (excluding Spain)	55,430	93.60	844,528	95.82
- Germany	13,353	22.55	230,130	26.11
- Austria	581	0.98	7,285	0.83
- Belgium	2,385	4.03	37,263	4.23
- Denmark	634	1.07	10,138	1.15
- Finland	444	0.75	11,717	1.33
- France	9,181	15.50	71,874	8.15
- Greece	0	0.00	62	0.01
- Ireland	555	0.94	6,683	0.76
- Italy	1,163	1.96	7,847	0.89
- Luxembourg	344	0.58	3,004	0.34
- Netherlands	7,484	12.64	108,829	12.35
- Poland	178	0.30	755	0.09
- Portugal	456	0.77	1,889	0.21
- United Kingdom	17,007	28.72	315,128	35.75
- Czech Republic	89	0.15	654	0.07
- Sweden	1,309	2.21	28,275	3.21
- Other EU countries	266	0.45	2,995	0.34
Norway	412	0.70	10,686	1.21
Russia	21	0.03	180	0.02
Switzerland	2,323	3.92	18,968	2.15
Other European countries	366	0.62	1,989	0.23
United States of America	205	0.35	754	0.09
Rest of America	135	0.23	974	0.11
African countries	91	0.15	562	0.06
Other countries	237	0.40	2,746	0.31

COS (TABLES ANNEX) - January 2019. Provisional data (4/4)



**Tourist accommodation occupancy survey  
(Rural tourist accommodation)**

January 2019

Provisional data

28th February 2019

**1. Number of travellers, overnight stays and average stay by Autonomous City and Community**

Autonomous Communities	Number of travellers			Number of overnight stays			Average stay
	Total	Residents In Spain	Residents abroad	Total	Residents In Spain	Residents abroad	
<b>TOTAL</b>	136,277	118,046	18,232	313,246	243,782	69,464	2.30
Andalucía	12,833	9,985	2,848	32,555	20,532	12,023	2.54
Aragón	5,745	5,537	208	19,417	18,132	1,286	3.38
Asturias, Principado de	6,490	6,155	335	13,692	13,245	447	2.11
Balears, Illes	5,064	1,906	3,158	13,773	4,119	9,654	2.72
Canarias	7,818	1,941	5,877	38,502	5,370	33,132	4.92
Cantabria	4,219	4,069	150	8,126	7,839	287	1.93
Castilla y León	25,155	24,026	1,129	51,352	49,283	2,069	2.04
Castilla-La Mancha	12,540	11,853	687	23,559	22,196	1,363	1.88
Cataluña	18,289	17,565	724	34,230	32,619	1,611	1.87
Comunitat Valenciana	6,927	6,214	713	15,476	12,231	3,245	2.23
Extremadura	6,867	6,120	747	12,713	11,374	1,339	1.85
Galicia	4,610	4,007	603	8,073	7,141	933	1.75
Madrid, Comunidad de	8,897	8,578	320	15,611	15,138	473	1.75
Murcia, Región de	2,790	2,634	156	6,286	5,943	343	2.25
Navarra, Comunidad Foral de <sup>1</sup>	3,160	3,089	71	7,992	7,871	121	2.53
País Vasco	4,051	3,556	495	10,265	9,143	1,122	2.53
Rioja, La	820	811	10	1,624	1,609	15	1.98
Ceuta	-	-	-	-	-	-	-
Melilla	-	-	-	-	-	-	-
Annual rate	-2.84	-3.93	4.88	-3.33	-1.34	-9.69	-0.51
Cumulative annual rate	-2.84	-3.93	4.88	-3.33	-1.34	-9.69	-0.51

**2. Open rural establishments, bed-places, occupancy rates and employed personnel by Autonomous City and Community**

Autonomous Communities	Estimated open rural establishments	Estimated bed-places	Occupancy rate			Employed personnel
			Of bed-places	Of bed-places at weekend	Of bedrooms	
<b>TOTAL</b>	15,180	139,952	7.20	15.22	9.54	21,072
Andalucía	2,211	17,971	5.80	11.54	7.85	2,988
Aragón	1,085	8,392	7.44	13.74	9.31	1,245
Asturias, Principado de	1,163	11,316	3.90	6.52	4.61	1,745
Balears, Illes	125	2,366	18.75	24.20	27.33	420
Canarias	549	3,485	35.53	42.27	52.55	832
Cantabria	295	4,090	6.40	15.51	7.96	462
Castilla y León	3,244	27,170	6.09	16.03	7.99	4,543
Castilla-La Mancha	1,588	13,655	5.56	14.48	6.77	1,987
Cataluña	1,777	15,619	7.06	18.79	8.64	2,241
Comunitat Valenciana	766	9,172	5.43	11.22	8.77	1,070
Extremadura	548	6,562	6.24	14.96	8.01	828
Galicia	354	4,518	5.74	12.18	6.81	562
Madrid, Comunidad de	216	3,559	14.14	32.98	20.73	568
Murcia, Región de	154	2,337	8.67	22.08	11.76	232
Navarra, Comunidad Foral de <sup>1</sup>	684	5,236	4.92	10.15	8.54	860
País Vasco	318	3,511	9.41	13.34	11.94	388
Rioja, La	102	991	5.27	14.15	5.77	100
Ceuta	-	-	-	-	-	-
Melilla	-	-	-	-	-	-
Annual rate	3.13	2.23	-5.48	-6.11	-5.58	5.61
Cumulative annual rate	3.13	2.23	-5.48	-6.11	-5.58	5.61

<sup>1</sup> Due to the updating in the directory of establishments carried out in C. Foral de Navarra, the data to be published since January 2019 for C. Foral de Navarra, Pirineo Navarro and the national total are not directly comparable with the data published last year, therefore, data link coefficients have been calculated

to allow the comparison of data between different years. These coefficients are available in INE website ([www.ine.es](http://www.ine.es))

### 3. Number of travellers, overnight stays and average stay in Provinces with the greatest number of overnight stays<sup>1</sup>

Provinces	Number of travellers			Number of overnight stays			Average stay
	Total	Residents In Spain	Residents abroad	Total	Residents In Spain	Residents abroad	
St Cruz de Tenerife	5,624	1,353	4,271	29,836	3,735	26,101	5.30
Girona	6,447	6,118	329	12,864	12,089	775	2.00
Ávila	5,799	5,698	101	12,216	12,089	127	2.11
Huesca	3,112	3,026	86	11,252	10,978	274	3.62
Barcelona	6,464	6,363	100	11,245	11,076	169	1.74
Segovia	5,146	5,036	110	10,171	9,990	181	1.98
Cáceres	5,409	4,770	639	9,950	8,880	1,071	1.84
Palmas, Las	2,194	587	1,607	8,666	1,634	7,031	3.95
Málaga	2,026	986	1,040	8,423	2,458	5,966	4.16
Lleida	3,531	3,472	58	7,064	6,845	219	2.00
Toledo	4,331	4,296	35	6,793	6,723	70	1.57
Huelva	2,817	2,655	162	6,336	5,804	532	2.25
Alicante\Alacant	2,464	2,092	372	6,071	4,640	1,432	2.46
Gipuzkoa	2,348	1,962	385	5,664	4,921	743	2.41
Valencia\València	2,621	2,287	334	5,522	3,719	1,804	2.11

<sup>1</sup> Provinces belonging to uniprovincial Autonomous Communities have not been included because they are reflected in previous tables.

### 4. Open rural establishments, bed-places, occupancy rates and employed personnel in Provinces with the highest number of overnight stays<sup>1</sup>

Provinces	Estimated open rural establishments	Estimated bed-places	Occupancy rate			Employed personnel
			Of bed-places	Of bed-places at weekend	Of bedrooms	
St Cruz de Tenerife	449	2,615	36.72	42.98	56.12	649
Girona	525	5,327	7.77	20.24	9.67	598
Ávila	703	5,351	7.35	21.59	8.76	984
Huesca	587	4,451	8.14	14.42	8.92	675
Barcelona	527	4,614	7.86	22.23	9.77	800
Segovia	414	3,916	8.37	24.61	10.97	599
Cáceres	442	5,281	6.07	15.34	7.94	660
Palmas, Las	100	870	31.95	40.16	41.72	183
Málaga	1,245	7,849	3.46	5.19	4.93	1,516
Lleida	514	3,780	6.03	15.63	7.34	589
Toledo	218	2,414	9.07	19.74	11.29	287
Huelva	136	1,221	16.15	39.76	18.31	255
Alicante\Alacant	182	2,299	8.49	17.18	13.27	302
Gipuzkoa	144	1,650	11.06	13.75	14.39	192
Valencia\València	226	3,528	5.05	10.12	8.63	282

<sup>1</sup> Provinces belonging to uniprovincial Autonomous Communities have not been included because they are reflected in previous tables.

**5. Number of travellers, overnight stays, average stay, capacity and occupancy rates in areas with the highest number of overnight stays**

Areas	Number of travellers		Number of overnight stays			Capacity		Occupancy rate		
	Residents In Spain	Residents abroad	Residents In Spain	Residents abroad	Average stay	Estimated open rural establish.	Estimated bed-places	Of bed-places	Of bed-places at weekend	Of bedrooms
Pirineus	7,277	86	15,226	284	2.11	741	6,127	8.16	21.51	9.53
Isla de Tenerife	1,051	2,794	1,764	13,110	3.87	98	1,153	41.45	53.68	52.19
P.Natural de Corona Forestal	885	2,197	1,417	11,206	4.09	72	876	46.32	61.47	57.36
Isla de Mallorca	1,341	2,916	3,029	9,081	2.84	109	2,084	18.72	23.60	28.39
Isla de La Palma	156	926	1,424	10,324	10.86	258	1,010	37.53	38.43	69.68
P.Nacional Teide	747	2,078	1,251	9,691	3.87	64	805	43.76	54.81	55.53
Pirineo Aragonés	2,634	46	7,177	202	2.75	549	4,232	5.61	12.34	6.50
Parque Nacional Sierra de Guadarrama	5,068	233	6,955	326	1.37	111	1,760	13.33	35.03	16.72
Costa Brava	3,467	301	6,245	710	1.85	319	3,232	6.92	17.96	8.78
Pirineo Navarro	2,754	61	6,842	111	2.47	580	4,269	5.25	11.01	9.34
P.Nacional Taburiente	48	573	343	6,222	10.56	138	557	38.00	39.18	67.99
P.Natural Sierras de Tejeda, Almijá	912	1,632	1,230	5,236	2.54	470	2,880	7.24	9.66	9.41
Extremadura Norte	3,339	156	5,937	289	1.78	292	3,553	5.65	13.69	7.00
Isla Gran Canaria	427	725	1,084	3,091	3.63	76	545	24.60	32.42	32.83
Costa Verde	2,024	203	3,642	256	1.75	446	4,645	2.71	3.02	3.46

**6. Number of travellers, overnight stays, average stay, capacity, occupancy rates and employed personnel per rural house by Autonomous City and Community<sup>1</sup>**

Autonomous Communities	Number of travellers		Number of overnight stays			Capacity		Occupancy rate		Employed personnel
	Residents In Spain	Residents abroad	Residents In Spain	Residents abroad	Average stay	Estimated open rural establish.	Estimated bed-places	Of bed-places	Of bed-places at weekend	
TOTAL	85,143	12,255	181,814	50,673	2.39	13,327	109,081	6.86	15.05	17,128
Andalucía	9,921	2,805	20,423	11,925	2.54	2,208	17,817	5.81	11.54	2,976
Aragón	4,570	175	15,030	1,143	3.41	868	6,544	7.95	14.72	1,018
Asturias, Principado de	2,932	153	5,742	174	1.92	751	5,042	3.78	6.05	941
Balears, Illes	1,452	2,583	3,367	7,121	2.60	74	1,172	28.83	37.84	193
Canarias	619	3,108	2,843	21,967	6.66	520	2,652	30.07	34.25	655
Cantabria	1,643	62	3,185	148	1.96	182	2,160	4.98	13.59	255
Castilla y León	15,248	420	34,807	966	2.28	2,973	21,637	5.33	15.34	3,756
Castilla-La Mancha	11,501	686	21,566	1,362	1.88	1,560	13,013	5.68	14.69	1,950
Cataluña	17,565	724	32,619	1,611	1.87	1,777	15,619	7.06	18.79	2,241
Comunitat Valenciana	4,839	594	10,074	2,532	2.32	718	6,571	6.18	12.54	943
Extremadura	3,422	151	5,949	294	1.75	341	3,365	5.98	15.18	484
Galicia	3,078	496	4,924	795	1.60	265	3,248	5.67	13.17	400
Madrid, Comunidad de	786	17	3,585	52	4.53	79	881	13.32	23.14	84
Murcia, Región de	2,074	50	5,196	196	2.54	142	2,021	8.60	23.31	192
Navarra, Comunidad Foral de	2,580	0	5,962	0	2.31	584	4,398	4.37	9.85	726
País Vasco	2,101	220	4,933	371	2.29	181	1,951	8.75	13.67	212
Rioja, La	811	10	1,609	15	1.98	102	991	5.27	14.15	100
Ceuta	-	-	-	-	-	-	-	-	-	-
Melilla	-	-	-	-	-	-	-	-	-	-

<sup>1</sup> To facilitate the comparability between data from different Autonomous Communities (and because of the different regulation and different characteristics), a group called rural house has been created, with those establishments with similar typology (location, capacity, etc...).

The variables included in the previous table have been estimated with that type of establishments.

## 7. Travellers and overnight stays by country of residence

Results by countries	Travellers		Overnight stays	
	Total	%	Total	%
TOTAL	136,277	100.00	313,246	100.00
Residents in Spain	118,046	86.62	243,782	77.82
Residents abroad	18,232	13.38	69,464	22.18
Total Residents abroad	18,232	100.00	69,464	100.00
Total Residents in EU (excluding Spain)	12,869	70.59	54,464	78.41
- Germany	3,888	21.32	22,119	31.84
- Belgium	587	3.22	2,966	4.27
- France	1,834	10.06	5,767	8.30
- Italy	593	3.25	1,618	2.33
- Netherlands	1,072	5.88	5,028	7.24
- Portugal	555	3.04	1,010	1.45
- United Kingdom	2,823	15.49	10,539	15.17
Switzerland	425	2.33	2,173	3.13
Other European countries	2,928	16.06	10,585	15.24
United States of America	596	3.27	1,894	2.73
Other countries	2,931	16.08	5,763	8.30

## Tourist Accommodation Occupancy Survey Hostels Occupancy Survey (HOS)

January 2019

Provisional data

28th February 2019

### 1. Travellers, overnight stays and average stay by Autonomous Cities and Communities

Autonomous cities and communities	Travellers			Overnight stays			Average stay
	Total	Residents in Spain	Residents abroad	Total	Residents in Spain	Residents abroad	
TOTAL	40,828	25,344	15,484	133,100	83,855	49,244	3.26
Andalucía	7,470	6,687	783	34,377	31,463	2,914	4.60
Aragón	2,898	2,841	57	8,080	7,689	391	2.79
Asturias, Principado de	-	-	-	-	-	-	-
Balears, Illes	-	-	-	-	-	-	-
Canarias	3,550	809	2,742	11,309	2,325	8,984	3.19
Cantabria	468	462	6	950	944	6	2.03
Castilla y León	974	928	46	2,470	2,415	55	2.54
Castilla - La Mancha	900	792	108	1,634	1,407	227	1.82
Cataluña	12,706	5,992	6,714	41,454	20,765	20,689	3.26
Comunitat Valenciana	4,478	1,912	2,566	14,137	5,218	8,919	3.16
Extremadura	241	238	3	415	412	3	1.72
Galicia	-	-	-	-	-	-	-
Madrid, Comunidad de	3,320	1,332	1,988	7,647	2,331	5,316	2.30
Murcia, Región de	-	-	-	-	-	-	-
Navarra, Comunidad Foral de	480	440	40	1,541	1,457	84	3.21
País Vasco	2,417	2,002	415	5,765	4,333	1,432	2.39
Rioja, La	335	335	0	477	477	0	1.42
Ceuta	-	-	-	-	-	-	-
Melilla	-	-	-	-	-	-	-
Annual rate	-2.33	-2.66	-1.79	17.49	16.28	19.61	20.29
Cumulative annual rate	-2.33	-2.66	-1.79	17.49	16.28	19.61	20.29

### 2. Open establishments, capacity, occupancy and number of staff by autonomous cities and communities

Autonomous cities and communities	Capacity		Occupancy rate		Employed personnel
	Estimated open establishments	Estimated bed-places	Of bed-places	Of bed-places at weekend	
TOTAL	195	19,846	21.63	24.37	1,437
Andalucía	14	2,898	38.26	35.12	210
Aragón	17	1,593	16.36	12.44	86
Asturias, Principado de	-	-	-	-	-
Balears, Illes	-	-	-	-	-
Canarias	30	694	52.53	59.41	65
Cantabria	6	391	7.84	20.19	23
Castilla y León	19	1,806	4.41	7.34	136
Castilla - La Mancha	20	1,882	2.80	5.78	57
Cataluña	27	3,819	35.01	42.86	290
Comunitat Valenciana	10	1,827	24.95	28.82	98
Extremadura	9	533	2.51	6.96	30
Galicia	-	-	-	-	-
Madrid, Comunidad de	6	654	37.69	42.48	178
Murcia, Región de	-	-	-	-	-
Navarra, Comunidad Foral de	7	647	7.69	3.21	52
País Vasco	17	1,902	9.78	11.19	111
Rioja, La	5	219	7.02	9.52	9
Ceuta	-	-	-	-	-
Melilla	-	-	-	-	-
Annual rate	2.59	0.75	16.62	17.94	-0.38
Cumulative annual rate	2.59	0.75	16.62	17.94	-0.38

### 3. Travellers and overnight stays by countries of residence

Countries	Travellers		Overnight stays		Average stay
	Total	%	Total	%	
TOTAL	40,828	100.00	133,100	100.00	3.26
Residents in Spain	25,344	62.08	83,855	63.00	3.31
Residents abroad	15,484	37.92	49,244	37.00	3.18
TOTAL residents abroad	15,484	100.00	49,244	100.00	3.18
TOTAL residents in E.U. (excluding Spain)	8,700	56.19	24,106	48.95	2.77
- Germany	1,613	10.42	4,558	9.26	2.83
- Belgium	323	2.09	843	1.71	2.61
- France	1,623	10.48	4,435	9.01	2.73
- Italy	1,423	9.19	3,821	7.76	2.69
- Netherlands	474	3.06	1,502	3.05	3.17
- Portugal	223	1.44	676	1.37	3.03
- United Kingdom	1,855	11.98	5,150	10.46	2.78
Switzerland	157	1.01	548	1.11	3.49
Other European countries	2,113	13.64	5,883	11.95	2.78
United States of America	1,446	9.34	3,792	7.70	2.62
Other countries	4,235	27.35	18,036	36.62	4.26

## HOLIDAY DWELLING PRICE INDEX (HDPI)

January 2019

Provisional data

28th February 2019

### National general index and breakdown by rates

	Index	Annual variation rate
TOTAL	133.87	1.79
Normal	124.70	2.53
Weekend	122.27	3.24
Tour-operators and travel agencies	140.96	1.31

### National general index and breakdown by modalities

	Index	Annual variation rate
TOTAL	133.87	1.79
Studio	126.34	1.45
Dwellings 2/4 bedplaces	135.17	1.07
Dwellings 4/6 bedplaces	136.23	5.23

## Tourist Campsite Price Index (TCSPI). 2002 Base

January 2019

Provisional data

28th January 2019

### National general index and breakdown by rates

	Index	Annual variation rate
TOTAL	151.73	2.82
Normal rate	146.71	1.64
Special rate for stays up to one month	134.37	2.49
Special rate for stays longer than one month	159.40	3.59
Bungalow rate <sup>1</sup>	103.73	3.38

<sup>1</sup>2014 Base

### National general index and breakdown by categories

	Index	Annual variation rate
TOTAL	151.73	2.82
Luxury and first	163.80	4.03
Second	143.57	1.56
Third	162.07	3.28

TCSPI (ANNEX OF TABLES) - January 2019. Provisional data



## Rural Tourism Accommodation Price Index (RTAPI)

January

Provisional data

28th February 2019

### General Autonomous Cities and Communities and national indices

	Index	Annual variation rate
TOTAL	144.78	0.88
Andalucía	144.74	-2.02
Aragón	167.46	-3.20
Asturias, Principado de	152.32	5.34
Balears, Illes	105.28	-9.03
Canarias	111.26	0.14
Cantabria	196.18	3.18
Castilla y León	145.88	2.91
Castilla - La Mancha	141.25	-0.96
Cataluña	167.98	5.28
Comunitat Valenciana	150.19	0.38
Extremadura	92.72	-4.49
Galicia	150.68	5.16
Madrid, Comunidad de	144.69	6.26
Murcia, Región de	156.53	3.52
Navarra, Comunidad Foral de	177.18	-4.95
País Vasco	177.72	3.85
Rioja, La	167.17	6.69
Ceuta	-	-
Melilla	-	-

### National general index and breakdown by rates

	Index	Annual variation rate
TOTAL	144.78	0.88
Normal	142.08	-0.68
Weekend	148.47	1.91

### National general index and breakdown by rent modality

	Index	Annual variation rate
TOTAL	144.78	0.88
Shared use (in case of per room rent modality)	123.72	-0.03
Full use (rent of entire dwelling)	154.87	1.20