

28 January 2020

Non-hotel Tourist Accommodation Occupancy Survey
January 2020. Provisional data

**Overnight stays in non-hotel tourist accommodation increased
1.9% in January, as compared with the same month of 2019**

Overnight stays in non-hotel tourist accommodation (holiday dwellings, tourist campsites, rural tourism accommodation and youth hostels) exceeded 5.5 million in January, 1.9% more than in the same month of 2019. Overnight stays by residents increased by 8.1%, and those by non-residents by 0.2%.

The average stay stood at 6.0 overnight stays per traveller.

Travellers and overnight stays in collective non-hotel tourist accommodation during the month of January were:

January 2020	Arrivals	Overnight stays
Residents	424.619	1.236.993
EU Residents (excluding Spain)	390.856	3.678.492
Rest of the world	111.856	633.773
TOTAL	927.331	5.549.258

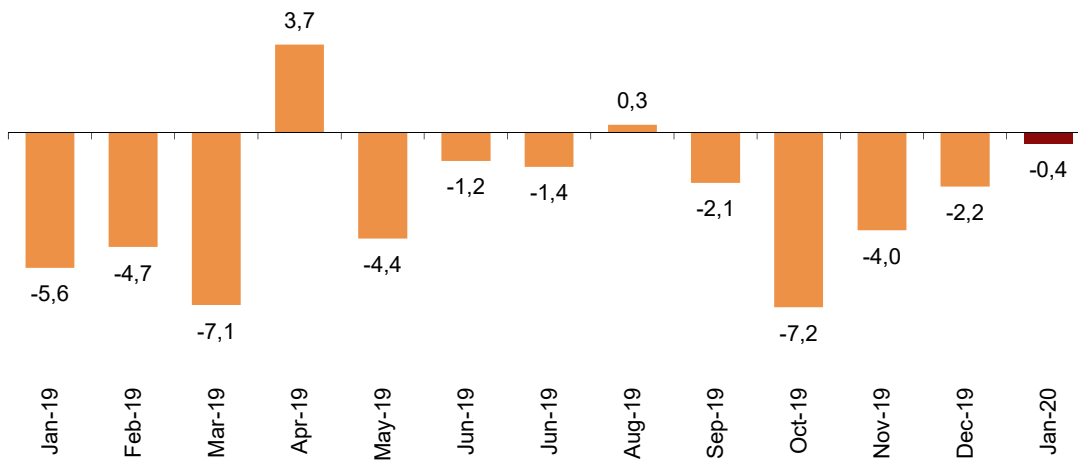
Holiday Dwellings

Overnight stays in holiday dwellings decreased by 0.4% in January. Overnight stays by residents increased 7.2%, while those by non-residents decreased by 1.8%.

The average stay decreased by 5.3% as compared with January 2019, standing at 6.7 overnight stays per traveller.

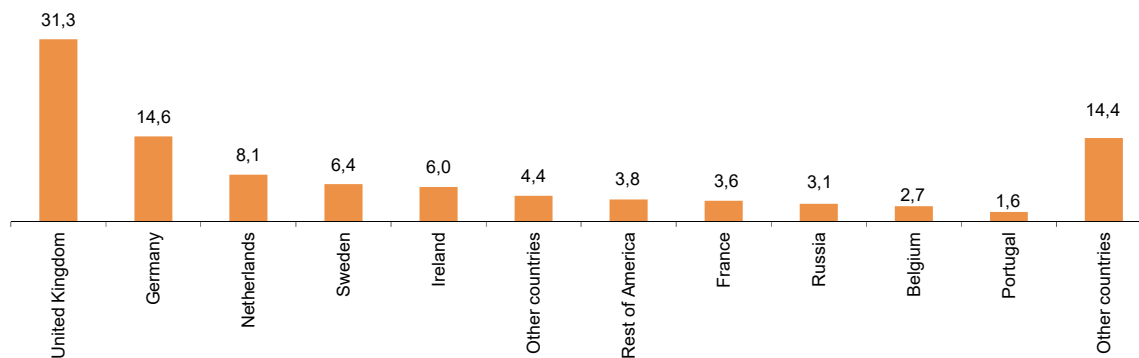
In January, 30.4% of the bed-places available for holiday dwellings were occupied, 0.3% less than in the same month of 2019. The weekend occupancy rate by bed-places stood at 32.6%, with an increase of 1.0%.

Annual variation rate for overnight stay
Percentage



Non-resident overnight stays in holiday dwellings represented 83.5% of the total. The United Kingdom was the main country of origin, with less than one million overnight stays, 5.4% more than in January 2019. The following country of origin was Germany, with 473,305 overnight stays, 2.9% more.

Distribution of non-residents overnight stays. Main country of residence
Percentage



Canarias was the preferred holiday dwelling destination, with more than 2.4 million overnight stays, and a decrease of 2.6% as compared with January 2019. This Autonomous Community reached the highest occupancy rate, with 80.5% of holiday dwellings offered.

By tourist areas, the island of Gran Canaria was the preferred destination, with 860,572 overnight stays and an occupancy rate of 84.4% of holiday dwellings offered.

The tourist sites with the highest number of overnight stays in January were San Bartolomé de Tirajana, Arona and Mogán.

Tourist Campsites

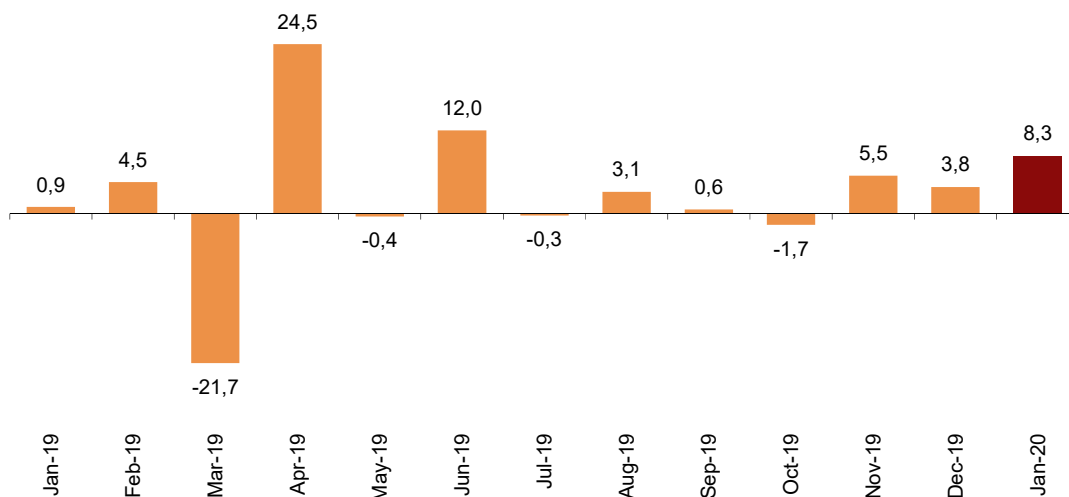
Overnight stays at tourist campsites registered in June an increase of 8.3% as compared with the same month of the previous year. Resident overnight stays rose by 13.6% and those of non-residents by 7.1%.

During the month of January, 40.1% of the offered pitches were occupied, 3.7% more than in the same month of 2019. The weekend occupancy rate by pitch reached 40.4%, with an annual increase of 2.2%.

Non-residents accounted for 80.0% of overnight stays at tourist campsites. The United Kingdom was the main country of origin, with 32.9% of the overnight stays by non-residents, 0.1% less than in January 2019.

Annual variation rate for overnight stays

Percentage



Comunitat Valenciana was the preferred destination for tourist campsites, with 646,730 overnight stays, representing an annual increase of 5.9%. La Rioja achieved the highest occupancy rate, with 63.2% of the pitches offered.

By tourist areas, Costa Blanca was the preferred destination, with 355,811 overnight stays and an occupancy rate of 83.9% of the pitches offered.

The tourist sites with the most overnight stays were Benidorm, Cartagena and Oliva.

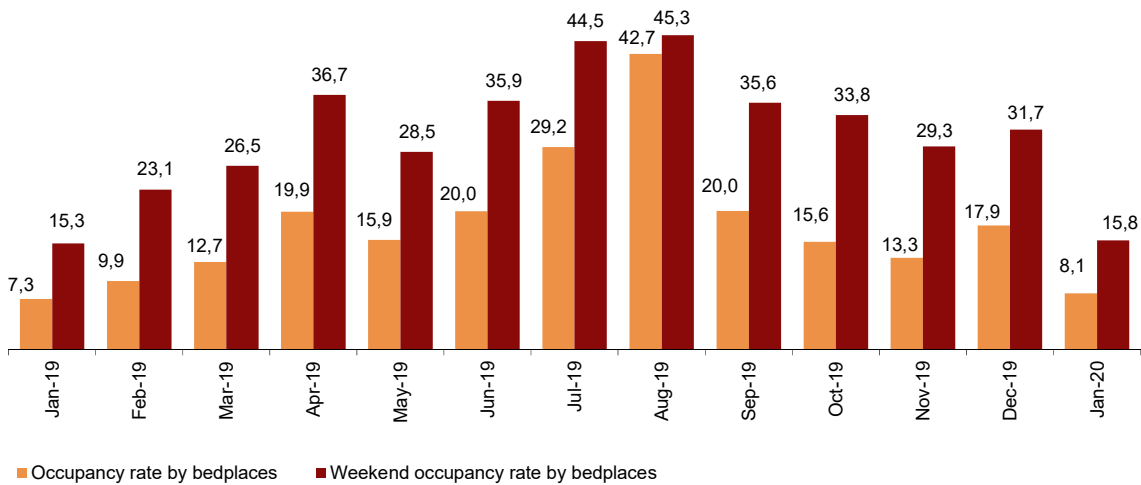
Rural tourism accommodation

Overnight stays in rural tourism accommodation presented an annual increase of 12.8% January. Resident overnight stays rose by 13.5% and those of non-residents by 10.2%.

In rural tourism accommodation, 8.1% of the bed-places were occupied, 11.1% more than January 2019. The weekend occupancy rate stood at 15.8%, with an annual increase of 3.0%.

Occupancy rate

Percentage

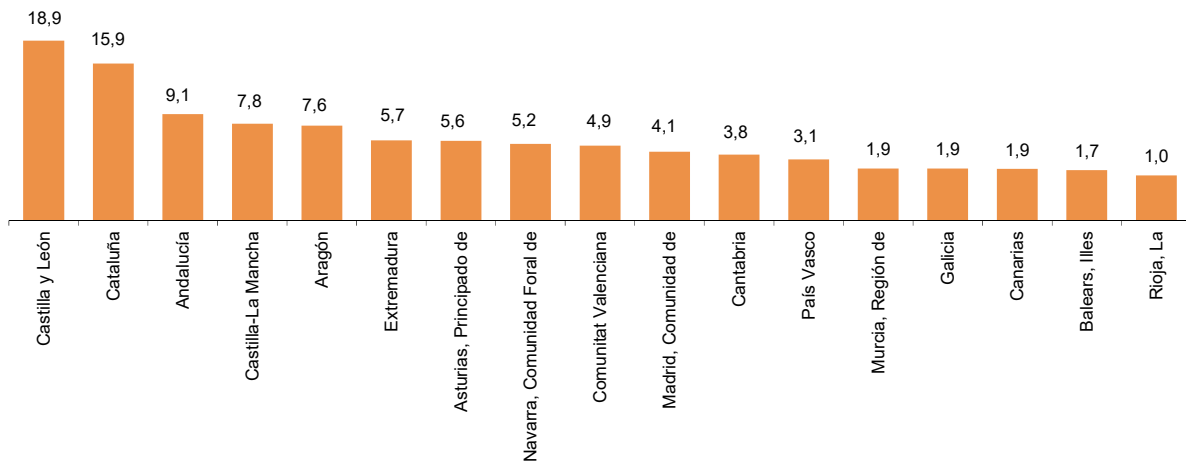


By Autonomous Community, Castilla y León was the preferred destination, with 55,860 overnight stays, 5.8% more than in January 2019. Canarias reached the highest occupancy rate, with 33.1% of the bed-places offered.

By tourist area, Pirineus was the main destination, with 23,271 overnight stays. The Parque Nacional Teide reached the highest occupancy rate with 41.4% of the bedplaces offered.

Distribution of overnight stays: residents

Percentage

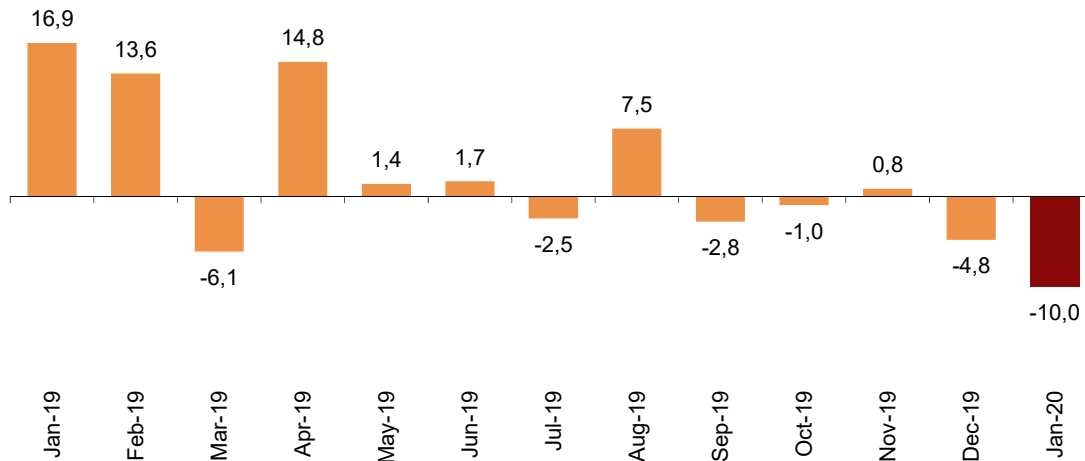


Hostels

Overnight stays in hostels registered an annual decrease of 10.0% January. Resident overnight stays decreased by 14.8% and non-resident overnight stays did so by 1.5%.

Annual variation rate for overnight stays

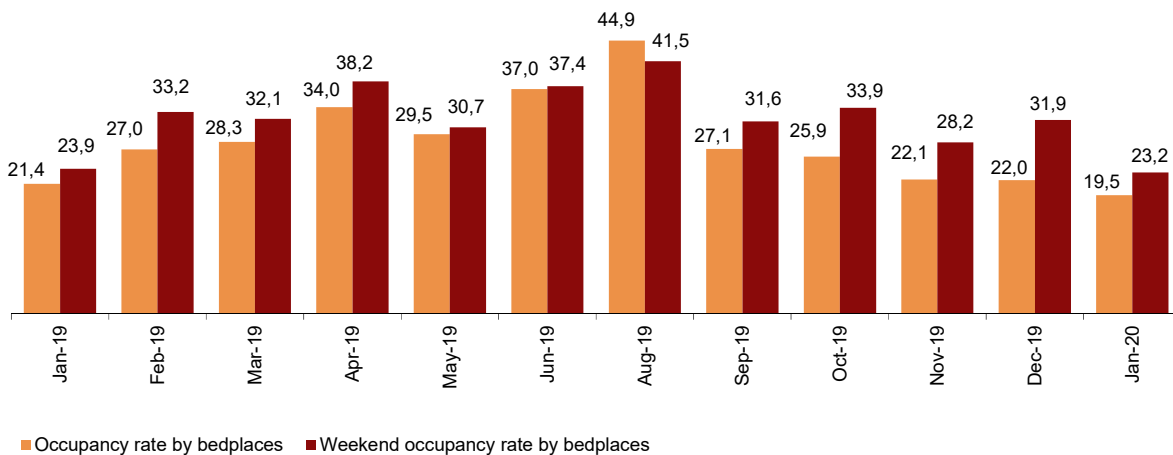
Percentage



19.5% of the available bed-places were occupied, 8.6% less than January 2019. The weekend occupancy rate reached 23.2%, with a 2.6% decrease.

Occupancy rate

Percentage



By Autonomous Community, Cataluña was the preferred destination, with 41,050 overnight stays, 0.8% more than in January 2019. Comunidad de Madrid reached the highest occupancy rate, with 58.0% of the bed-places offered.

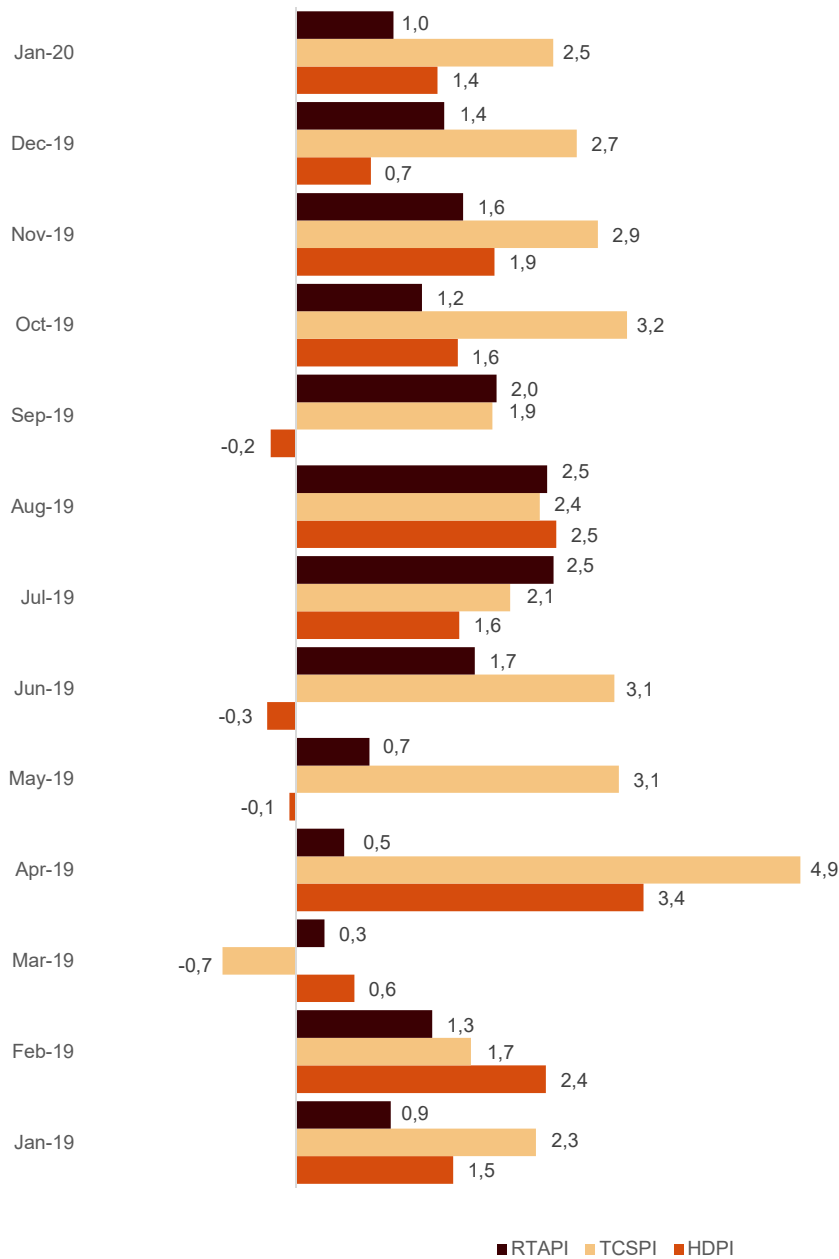
Price indices

The Holiday Dwelling Price Index (HDPI) increased 1.4%, as compared to January 2019.

The Tourist Campsite Price Index (TCPI) increased by 2.5% in the annual rate.

The Rural Tourism Accommodation Price Index (RTAPI) registered a 1.0% increase in January.

Price Indices. Annual variation rate
Percentage



Evolution of travellers and overnight stays in all Spanish collective tourist accommodation

In January, overnight stays in Spanish collective tourist accommodation (hotels¹, holiday dwellings, tourist campsites, rural tourism accommodation and youth hostels) registered a 2.7% increase in the annual rate. Resident overnight stays rose by 4.3% and those of non-residents by 1.9%.

The average stay decreased 3.5%, and stood at 3.3 overnight stays per traveller.

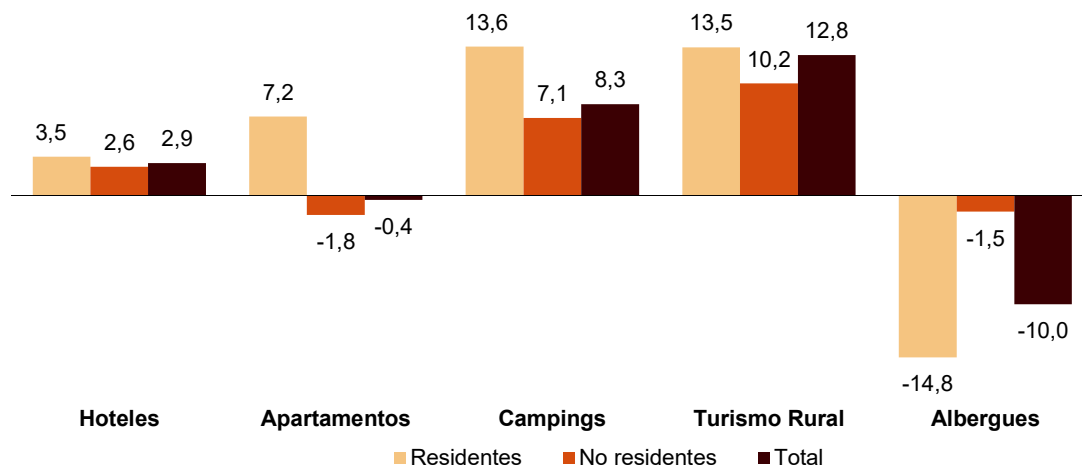
Travellers and overnight stays in collective tourist accommodation were:

January 2020	Holiday dwellings	Campsites	Rural T.	Hostels	Non-hotel	Hotels	Total
Arrivals	581.053	146.620	159.625	40.034	927.332	5.570.235	6.497.567
Residents	181.864	77.825	140.182	24.748	424.619	2.925.232	3.349.851
Non-residents	399.189	68.795	19.442	15.286	502.712	2.645.003	3.147.715
Overnight stays	3.878.056	1.188.970	362.951	119.280	5.549.257	15.959.217	21.508.474
Residents	641.825	238.185	285.432	71.551	1.236.993	5.692.536	6.929.529
Non-residents	3.236.232	950.785	77.519	47.729	4.312.265	10.266.681	14.578.946

Of the total overnight stays made in collective tourist accommodation, 74% corresponded to hotels and 26% to non-hotel tourist accommodation.

Overnight stays in collective tourist accommodation. Annual variation rate

Percentage



The main countries of origin for all types of regulated tourist accommodation were the United Kingdom (with 24.4% of the total number of non-resident overnight stays), Germany (17.0%) and France (5.6%).

Canarias was the preferred destination, with over 8.1 million overnight stays (0.7% less than in January 2019). It was followed by Andalucía, with 3.1 million overnight stays (and an increase of 3.4%) and Cataluña, with over 2.6 million, (and an annual increase of 4.5%).

¹ The press release corresponding to Hotel Tourism Short-Term Trends was published on 24 February.

Revision and updating of data

Coinciding with today's publication, the INE has updated the data for January 2019 of the Occupancy Survey in: Holiday Dwellings (HDOS), Campsites (COS), Rural Tourism Accommodation (RTAOS) and Hostels (HOS). As well as the Holiday Dwelling Price Index (HDPI), the Tourist Campsite Price Index (TCPI) and the Rural Tourism Accommodation Price Index (RTAPI).

Methodological note

The main objective of the Holiday Dwelling Occupancy Survey (HDOS) is to ascertain the behaviour of a series of variables that make it possible to describe the segment that occupies this type of accommodation within the tourist sector, both from the point of view of supply and demand.

The Holiday Dwelling Price Index (HDPI) is a statistical measure of the monthly evolution of the prices offered by holiday dwelling establishments to their clients.

Type of operation: on-going monthly survey.

Population scope: holiday apartment establishments and/or companies operating holiday apartments.

Geographical scope: the entire national territory, with the exception of Ceuta and Melilla, where there are no establishments of this type.

Reference period for the results: monthly.

Reference period for the information: The consultation of basic data refers to a fortnight of the month, chosen randomly, in such way that the complete month is covered among all establishments.

Type of sampling: stratified sampling by province and establishment size, and stratified at island-size level for Canarias and Illes Balears.

Collection method: questionnaire filled in directly by the establishment.

For more information on these statistical operations, you can consult the [methodology and the standardised methodological report](#) for each of them in INEbase.

The main objective of the Campsite Occupancy Survey (COS) is to ascertain the behaviour of a series of variables that make it possible to describe the segment that this type of accommodation occupies within the tourist sector, from the viewpoint of both supply and demand.

The Tourist Campsite Price Index (TCPI) is a statistical measure of the monthly evolution of the prices offered by campsites to their clients.

Type of operation: on-going monthly survey.

Population scope: camping establishments.

Geographical scope: the entire national territory, with the exception of Ceuta and Melilla where there are no establishments of this type.

Reference period for the results: monthly.

Reference period for the information: seven consecutive days of each month, chosen randomly in such way that all the establishments cover the whole month.

Sample size: approximately 1200 establishments.

Type of sampling: comprehensive survey in all provinces.

Collection method: questionnaire filled in directly by the establishment.

For more information on these statistical operations, you can consult the [methodology and the standardised methodological report](#) for each of them in INEbase.

The main objective of the Rural Tourism Accommodation Occupancy Survey (RTAOS) is to ascertain the behaviour of a series of variables that make it possible to describe the fundamental characteristics of this type of accommodation within the tourist sector, both from the point of view of supply and demand.

The Rural Tourism Accommodation Price Index (RTAPI) is a statistical measure of the monthly evolution of the prices that entrepreneurs of this type of accommodation apply to their clients.

Type of operation: on-going monthly survey.

Population scope: rural tourism establishments registered as such in the corresponding register of each Autonomous Community.

Geographical scope: the entire national territory, with the exception of Ceuta and Melilla, where there are no establishments of this type.

Reference period for the results: monthly.

Reference period for the information: The consultation of basic data refers to all the days of the month.

Type of sampling: comprehensive survey in all provinces except those where the population size is large enough to take a sample.

Collection method: questionnaire filled in directly by the establishment.

For more information on these statistical operations, you can consult the [methodology and the standardised methodological report](#) for each of them in INEbase.

The main objective of the Hostels Occupancy Survey (HOS) is to ascertain the behaviour of a series of variables that make it possible to describe the fundamental characteristics of this type of accommodation within the tourist sector, both from the point of view of supply and demand.

For more information on this statistical operation, you can consult the [methodology and the standardised methodological report](#) in INEbase.

More information at INEbase - www.ine.es Twitter: [@es_ine](https://twitter.com/es_ine) All press releases in: www.ine.es/prensa/prensa.htm

Press office: Telephone numbers: 91 583 93 63 /94 08 — gprensa@ine.es

Information Area: Telephone number: (+34) 91 583 91 00 — www.ine.es/infoine

Tourist Accommodation Occupancy Survey (Holiday Dwellings)

January 2020

Provisional data

28th February 2020

1. Travellers, overnight stays and average stay by Autonomous Cities and Communities

Autonomous Cities and Communities	Travellers			Overnight stays			Average stay
	Total	Residents in Spain	Residents abroad	Total	Residents in Spain	Residents abroad	
TOTAL	581.053	181.864	399.189	3.878.056	641.825	3.236.232	6,67
Andalucía	121.458	52.248	69.211	457.811	119.692	338.119	3,77
Aragón	14.533	13.119	1.414	45.263	40.637	4.626	3,11
Asturias, Principado de	2.125	2.092	33	7.161	7.062	100	3,37
Balears, Illes	2.825	1.181	1.644	20.589	5.670	14.919	7,29
Canarias	264.391	21.442	242.948	2.479.144	120.611	2.358.533	9,38
Cantabria	4.710	4.462	248	14.201	13.461	740	3,01
Castilla y León	8.817	7.706	1.111	18.288	14.630	3.658	2,07
Castilla - La Mancha	4.342	3.962	380	17.400	15.554	1.846	4,01
Cataluña	28.020	14.641	13.380	161.539	90.817	70.722	5,77
Comunitat Valenciana	59.025	20.840	38.185	394.598	81.554	313.043	6,69
Extremadura	6.165	5.229	936	11.749	10.117	1.632	1,91
Galicia	4.560	3.981	579	15.348	12.809	2.538	3,37
Madrid, Comunidad de	46.147	19.980	26.167	165.275	66.901	98.373	3,58
Murcia, Región de	3.960	2.774	1.186	27.833	15.255	12.578	7,03
Navarra, Comunidad Foral de	3.995	3.328	667	13.396	9.179	4.217	3,35
País Vasco	3.743	2.748	996	24.323	13.914	10.409	6,50
Rioja, La	2.235	2.131	103	4.139	3.960	179	1,85
Ceuta	-	-	-	-	-	-	-
Melilla	-	-	-	-	-	-	-
Annual rate	5,17	14,03	1,57	-0,44	7,16	-1,82	-5,33
Cumulative annual rate	5,17	14,03	1,57	-0,44	7,16	-1,82	-5,33

2. Capacity, occupancy and number of staff by Autonomous Cities and Communities

Autonomous Cities and Communities	Capacity		Level of occupancy				Employed personnel
	Estimated bedplaces	Estimated Holiday dwelling	Per bedplaces	Per bedplaces at weekend	Per Holiday dwelling	Per Holiday dwelling at weekend	
TOTAL	409.948	107.552	30,40	32,55	52,64	55,06	23.345
Andalucía	69.270	17.359	21,26	25,38	36,90	42,39	4.063
Aragón	7.457	1.735	19,50	29,59	27,82	39,57	538
Asturias, Principado de	3.211	805	7,19	11,69	9,45	14,55	223
Balears, Illes	2.996	807	22,16	22,77	42,24	42,30	297
Canarias	147.133	45.573	54,08	54,57	80,50	80,82	11.318
Cantabria	2.809	703	16,31	22,27	26,33	35,91	324
Castilla y León	5.663	1.306	10,40	18,16	17,92	27,69	509
Castilla - La Mancha	4.888	1.190	11,48	16,99	20,81	28,14	394
Cataluña	23.546	5.831	22,17	26,14	37,02	41,37	936
Comunitat Valenciana	109.667	22.915	11,60	12,72	24,88	26,61	2.511
Extremadura	3.377	786	11,22	18,14	16,61	24,45	439
Galicia	3.315	931	14,87	17,45	25,62	29,55	231
Madrid, Comunidad de	11.062	3.979	47,89	51,72	67,35	69,04	620
Murcia, Región de	7.579	1.781	11,84	12,82	25,15	26,68	225
Navarra, Comunidad Foral de	2.051	398	21,01	29,61	40,14	49,88	379
País Vasco	4.073	1.053	19,24	22,51	36,90	41,04	223
Rioja, La	1.853	401	7,20	15,86	12,53	24,74	115
Ceuta	-	-	-	-	-	-	-
Melilla	-	-	-	-	-	-	-
Annual rate	-0,21	-1,31	-0,30	0,95	0,59	1,45	1,97
Cumulative annual rate	-0,21	-1,31	-0,30	0,95	0,59	1,45	1,97

3. Travellers, overnight stays, capacity, occupancy, total number of staff with greater number of overnight stays¹

Provinces	Travellers		Overnight stays			Capacity		Level of occupancy			Employed personnel
	Residents in Spain	Residents abroad	Residents in Spain	Residents abroad	Average stay	Estimated bed-places	Estimated holiday dwelling	Per bed-places	Per Holiday dwelling	Per Holiday dwelling at weekend	
Palmas, Las	11.392	149.973	69.157	1.498.828	9,72	94.786	28.677	53,10	81,94	82,48	7.180
Santa Cruz de Tenerife	10.051	92.976	51.454	859.705	8,84	52.347	16.896	55,84	78,06	78,01	4.138
Málaga	12.741	40.245	37.878	260.390	5,63	41.915	10.076	22,94	41,57	45,29	2.466
Alicante\Alacant	7.385	21.870	40.221	246.858	9,81	78.934	16.690	11,73	25,34	26,33	1.734
Barcelona	5.111	11.409	66.924	61.919	7,80	8.887	2.703	46,74	65,43	68,49	468
Valencia\València	10.026	15.570	25.304	54.630	3,12	14.372	3.139	17,93	34,75	40,96	582
Sevilla	12.681	17.639	28.220	39.377	2,23	6.366	1.875	34,03	54,30	62,40	454
Granada	13.391	6.455	24.684	16.780	2,09	6.231	1.676	21,30	28,68	43,14	426
Huesca	8.844	323	28.667	946	3,23	4.458	1.000	21,32	28,71	41,38	289
Castellón\Castelló	3.428	746	16.030	11.555	6,61	16.360	3.086	5,44	12,33	13,53	196
Girona	4.551	1.263	10.481	6.351	2,89	10.255	2.203	5,05	9,93	14,00	280
Cádiz	4.917	2.148	8.788	7.041	2,24	3.929	1.013	12,99	21,09	25,15	272
Almería	1.735	733	5.432	10.392	6,41	5.627	1.332	9,06	22,23	23,29	158
Gipúzkoa	995	525	5.676	8.151	9,10	2.401	588	18,58	31,15	33,28	127
Lleida	4.139	383	11.639	902	2,77	2.500	548	16,18	22,71	34,33	117

¹ Provinces belonging to uniprovincial Autonomous Communities have not been included because they are reflected in previous tables.

4. Travellers, overnight stays, capacity, occupancy, total number of staff from tourist areas with greater number of overnight stays

Tourist Areas	Travellers		Overnight stays			Capacity		Level of occupancy			Employed personnel
	Residents in Spain	Residents abroad	Residents in Spain	Residents abroad	Average stay	Estimated bed-places	Estimated holiday dwelling	Per bed-places	Per Holiday dwelling	Per Holiday dwelling at weekend	
Isla de Gran Canaria	5.452	77.225	34.325	826.247	10,41	50.115	15.317	55,24	84,42	84,70	3.557
Isla de Tenerife	7.710	86.906	40.190	792.303	8,80	46.299	14.827	57,67	79,86	79,74	3.618
Isla de Lanzarote	3.866	54.934	24.643	488.337	8,72	31.335	9.309	52,52	81,59	82,37	2.628
Costa del Sol	11.100	39.026	34.993	256.880	5,82	39.921	9.514	23,56	42,84	46,27	2.367
Costa Blanca	7.021	21.474	38.754	243.869	9,92	76.559	16.209	11,91	25,70	26,71	1.676
Isla de Fuerteventura	2.074	17.813	10.189	184.244	9,78	13.336	4.051	46,45	73,34	74,32	995
Costa Barcelona	2.632	1.610	58.367	26.679	20,05	4.960	1.660	55,31	70,39	72,16	212
Barcelona	2.051	9.766	6.276	34.863	3,48	3.369	880	39,31	62,62	68,37	230
Isla de La Palma	1.156	3.220	6.740	33.808	9,27	2.656	929	48,97	72,44	72,90	267
Isla de La Gomera	765	2.770	3.202	33.199	10,30	2.995	1.029	39,21	62,82	63,16	226

5. Travellers, overnight stays, capacity, occupancy, total number of staff from tourist sites with greater number at overnights stays

Tourist sites	Travellers		Overnight stays			Capacity		Level of occupancy			Employed personnel
	Residents in Spain	Residents abroad	Residents in Spain	Residents abroad	Average stay	Estimated bed-places	Estimated holiday dwelling	Per bed-places	Per Holiday dwelling	Per Holiday dwelling at weekend	
San Bartolomé de Tirajana	3.468	43.640	22.342	489.549	10,87	30.743	9.505	53,50	81,42	81,71	2.192
Arona	1.752	38.786	10.281	352.846	8,96	19.818	6.374	58,75	79,99	80,13	1.571
Mogán	714	30.468	6.097	312.841	10,23	17.942	5.189	57,29	90,77	91,00	1.262
Tías	2.122	30.691	13.493	275.449	8,81	16.015	5.025	57,84	85,76	86,09	1.260
Adeje	1.341	26.433	8.971	229.849	8,60	14.045	4.429	54,49	74,83	74,03	990
Madrid	18.257	25.452	62.145	95.804	3,61	10.371	3.759	48,78	67,40	69,13	561
Benidorm	2.496	12.608	13.202	136.286	9,90	21.558	5.272	22,37	44,95	46,53	637
Teguise	1.316	13.389	8.882	116.441	8,52	8.204	2.493	49,08	77,27	78,32	662
Puerto de la Cruz	3.373	8.469	15.423	96.549	9,46	5.241	2.114	68,75	87,93	87,83	479
Yaiza	327	7.898	1.829	70.610	8,81	4.995	1.296	46,34	74,04	75,33	407

6. Travellers and overnight stays by countries of residence

Countries	Travellers		Overnight stays	
	Total	%	Total	%
TOTAL	581.053	100,00	3.878.056	100,00
Residents in Spain	181.864	31,30	641.825	16,55
Residents abroad	399.189	68,70	3.236.232	83,45
Total residents abroad	399.189	100,00	3.236.232	100,00
Total residents in E.U (excluding Spain)	304.753	76,34	2.689.323	83,10
- Germany	36.737	9,20	473.305	14,63
- Austria	2.594	0,65	20.138	0,62
- Belgium	6.139	1,54	51.724	1,60
-Denmark	12.835	3,22	122.629	3,79
- Finland	15.517	3,89	143.462	4,43
- France	14.556	3,65	87.103	2,69
- Greece	354	0,09	1.737	0,05
- Ireland	14.774	3,70	115.060	3,56
- Italy	16.683	4,18	99.755	3,08
- Luxembourg	284	0,07	2.067	0,06
- Netherlands	20.367	5,10	192.993	5,96
- Poland	6.381	1,60	36.174	1,12
- Portugal	3.946	0,99	16.727	0,52
- United Kingdom	118.299	29,63	1.014.355	31,34
- Czech Republic	1.077	0,27	6.953	0,21
- Sweden	27.429	6,87	261.397	8,08
- Other EU countries	6.781	1,70	43.744	1,35
Norway	19.841	4,97	208.271	6,44
Russia	6.012	1,51	43.056	1,33
Switzerland	3.242	0,81	27.369	0,85
Other european countries	7.337	1,84	52.946	1,64
United States of America	7.916	1,98	31.368	0,97
Rest of America	17.782	4,45	86.438	2,67
African countries	6.835	1,71	27.198	0,84
Other countries	25.469	6,38	70.264	2,17

**Tourist Accommodation Occupancy Survey
Campsite Occupancy Survey (COS)**

January 2020

Provisional data

28th February 2020

1. Travellers, overnight stays and average stay by category of establishment

Category	Travellers			Overnight stays			Average stay
	Total	Residents in Spain	Residents abroad	Total	Residents in Spain	Residents abroad	
TOTAL	146.620	77.825	68.795	1.188.970	238.185	950.785	8,11
Luxury and first-class	58.180	30.771	27.409	497.261	111.197	386.064	8,55
Second-class	76.611	40.093	36.518	648.467	111.407	537.060	8,46
Third-class	11.828	6.961	4.867	43.242	15.581	27.661	3,66
Annual rate	17,28	18,15	16,31	8,30	13,56	7,06	-7,65
Cumulative annual rate	17,28	18,15	16,31	8,30	13,56	7,06	-7,65

2. Open establishments, capacity, occupancy and number of staff by category of establishments

Category	Estimated open establishments	Capacity		Occupied pitches	Occupancy rate per pitch	Weekend occupancy rate	Employed personnel
		Estimated bedplaces	Estimated pitches				
TOTAL	429	257.732	81.393	1.012.045	40,11	40,37	3.178
Luxury and first-class	114	110.501	34.053	404.120	38,28	39,61	1.476
Second-class	250	130.538	41.722	556.589	43,03	42,01	1.524
Third-class	66	16.693	5.617	51.337	29,48	33,52	178
Annual rate	1,83	2,52	1,43	5,19	3,70	2,22	9,40
Cumulative annual rate	1,83	2,52	1,43	5,19	3,70	2,22	9,40

3. Travellers, overnight stays and average stay by Autonomous Cities and Communities

Autonomous cities and communities	Travellers			Overnight stays			Average stay
	Total	Residents in Spain	Residents abroad	Total	Residents in Spain	Residents abroad	
TOTAL	146.620	77.825	68.795	1.188.970	238.185	950.785	8,11
Andalucía	31.308	9.783	21.526	237.520	30.464	207.056	7,59
Aragón	5.750	4.819	931	14.093	12.606	1.486	2,45
Asturias, Principado de	477	327	150	1.603	1.237	366	3,36
Balears, Illes	-	-	-	-	-	-	-
Canarias	937	673	264	6.618	1.780	4.838	7,06
Cantabria	-	-	-	-	-	-	-
Castilla y León	3.635	1.102	2.533	5.732	2.462	3.270	1,58
Castilla - La Mancha	1.217	870	347	2.309	1.619	690	1,90
Cataluña	40.570	31.613	8.957	105.977	67.879	38.098	2,61
Comunitat Valenciana	37.096	11.994	25.102	646.730	64.882	581.847	17,43
Extremadura	1.613	841	772	3.320	1.973	1.347	2,06
Galicia	207	41	166	368	152	216	1,78
Madrid, Comunidad de	9.804	8.379	1.425	35.108	30.851	4.257	3,58
Murcia, Región de	7.051	2.780	4.270	113.369	10.208	103.161	16,08
Navarra, Comunidad Foral de	2.170	1.936	234	5.430	5.127	303	2,50
País Vasco	2.963	1.081	1.881	6.934	3.346	3.588	2,34
Rioja, La	1.718	1.481	237	3.697	3.437	260	2,15
Ceuta	-	-	-	-	-	-	-
Melilla	-	-	-	-	-	-	-

4. Open establishments, capacity, occupancy and number of staff by autonomous cities and communities

Autonomous cities and communities	Estimated open establishments	Capacity		Occupied pitches	Occupancy rate per pitch	Weekend occupancy rate	Employed personnel
		Estimated bedplaces	Estimated pitches				
TOTAL	429	257.732	81.393	1.012.045	40,11	40,37	3.178
Andalucía	101	55.439	17.128	169.914	32,00	33,35	729
Aragón	39	15.096	4.564	29.733	21,01	23,50	164
Asturias, Principado de	5	3.637	1.013	2.173	6,92	7,77	28
Balears, Illes	-	-	-	-	-	-	-
Canarias	4	3.234	1.376	6.675	15,65	20,18	19
Cantabria	-	-	-	-	-	-	-
Castilla y León	18	7.278	2.243	13.095	18,83	24,08	44
Castilla - La Mancha	12	3.890	1.163	7.008	19,44	20,48	66
Cataluña	64	44.656	14.538	145.547	32,29	31,29	559
Comunitat Valenciana	108	69.737	21.725	422.137	62,68	62,73	922
Extremadura	6	2.554	947	7.845	26,71	29,67	66
Galicia	14	4.233	1.382	1.253	2,92	3,20	40
Madrid, Comunidad de	18	16.863	5.786	75.918	42,33	40,82	210
Murcia, Región de	16	14.590	4.804	74.642	50,12	52,32	186
Navarra, Comunidad Foral de	8	4.693	1.358	14.324	34,02	30,85	52
País Vasco	8	4.964	1.393	9.085	21,04	32,02	36
Rioja, La	5	5.587	1.631	31.955	63,20	64,54	41
Ceuta	-	-	-	-	-	-	-
Melilla	-	-	-	-	-	-	-

5. Travellers and overnight stays, average stay, capacity, occupancy and number of staff by provinces with the greatest number of overnight stays¹

Provinces	Travellers		Overnight stays		Average stay	Estimated open establishments	Estimated pitches	Occupancy rate per pitch	Employed personnel
	Residents in Spain	Residents abroad	Residents in Spain	Residents abroad					
	Alicante\Alacant	3.867	13.600	31.263					
Castellón\Castelló	2.584	7.279	17.236	118.590	13,77	34	6.220	46,81	252
Málaga	1.555	6.062	9.687	91.571	13,29	29	4.501	44,27	213
Valencia\València	5.543	4.223	16.384	53.162	7,12	26	4.915	49,79	191
Almería	917	3.447	4.604	46.020	11,60	20	2.662	41,32	109
Barcelona	6.689	2.844	19.512	17.838	3,92	17	5.825	26,66	251
Girona	9.982	5.215	19.644	17.697	2,46	26	4.189	33,84	164
Granada	1.670	3.392	4.206	27.533	6,27	19	2.563	29,18	97
Cádiz	853	3.743	2.169	26.827	6,31	12	2.982	23,41	127
Huelva	3.525	3.225	6.885	11.590	2,74	8	2.416	26,60	72
Lleida	8.166	92	16.925	637	2,13	14	2.530	46,60	72
Tarragona	6.775	805	11.799	1.926	1,81	8	1.994	27,36	72
Huesca	3.011	140	7.662	269	2,52	22	3.159	25,81	111
Sevilla	509	1.043	1.363	2.524	2,50	4	385	31,09	58
Teruel	1.646	-	3.301	-	1,98	10	869	8,41	32

¹ Provinces belonging to uniprovincial Autonomous Communities have not been included because they are reflected in previous tables.

6. Travellers, overnight stays, average stay, open establishments, capacity, occupancy and number of staff from tourist areas with the greatest number of overnight stays

Tourist areas	Travellers		Overnight stays		Average stay	Estimated open establishments	Estimated pitches	Occupancy rate per pitch	Employed personnel
	Residents in Spain	Residents abroad	Residents in Spain	Residents abroad					
	Costa Blanca	2.419	10.539	11.454					
Costa de Castellón	2.034	6.758	13.248	115.475	14,64	29	5.700	48,17	224
Costa Cálida	991	3.275	4.611	93.235	22,94	8	3.742	53,59	147
Costa del Sol	639	4.984	7.802	88.007	17,04	14	3.280	55,80	160
Costa Valencia	1.446	2.693	8.649	47.043	13,46	11	3.086	57,56	115
Costa de Almería	669	3.390	4.148	43.166	11,66	16	2.307	41,64	82
Pirineus	18.021	130	38.712	774	2,18	31	5.157	46,54	212
Costa de la Luz de Cádiz	629	3.327	1.764	25.948	7,01	9	2.416	23,86	109
Costa Barcelona	1.802	2.844	7.388	17.838	5,43	6	4.032	19,57	141
Costa Tropical	437	1.532	1.912	21.563	11,92	7	1.247	37,89	42
Costa Brava	2.852	5.143	5.257	17.417	2,84	14	2.557	26,71	109
Costa de la Luz de Huelva	3.304	3.129	6.560	11.277	2,77	6	2.271	26,49	67
Costa Daurada	6.485	253	11.199	556	1,74	5	1.256	37,17	52
Pirineo Aragonés	2.997	140	7.648	269	2,52	20	2.998	25,19	109
pn Sierra Nevada	940	1.420	2.020	4.886	2,93	8	763	19,82	39

7. Travellers, overnight stays, average stay, open establishments, capacity, occupancy and number of staff from tourist sites with the greatest number at overnights stays

Tourist sites	Travellers		Overnight stays		Average stay	Estimated open establishments	Estimated pitches	Occupancy rate per pitch	Employed personnel
	Residents in Spain	Residents abroad	Residents in Spain	Residents abroad					
	Benidorm	582	2.815	4.801					
Cartagena	184	1.403	1.376	61.997	31,00	3	2.555	40,46	87
Oliva	118	1.717	3.709	32.904	19,95	5	1.267	52,36	76
Marbella	298	2.055	3.908	31.286	14,96	3	1.313	49,02	70
Vélez-Málaga	81	1.210	910	33.990	27,03	4	839	72,97	58
Cabanes	316	896	1.479	28.346	24,61	4	1.211	53,41	50
Calp	42	1.061	354	29.178	26,77	6	573	97,96	26
Benicasim	180	1.404	1.258	27.420	18,10	4	881	59,19	52
Peníscola	408	1.721	2.005	26.010	13,16	7	1.144	43,59	32
Mazarrón	208	1.557	1.075	26.420	15,58	3	882	83,49	44
Villajoyosa	86	863	1.047	18.608	20,71	3	369	92,07	27
Altea	52	777	201	18.117	22,10	3	401	82,75	18

8. Travellers and overnight stays by countries of residence

Countries	Travellers		Overnight stays	
	Total	%	Total	%
TOTAL	146.620	100,00	1.188.970	100,00
Residents in Spain	77.825	53,08	238.185	20,03
Residents abroad	68.795	46,92	950.785	79,97
TOTAL residents abroad	68.795	100,00	950.785	100,00
TOTAL residents in EU (excluding Spain)	64.368	93,57	904.323	95,11
- Germany	17.280	25,12	257.381	27,07
- Austria	780	1,13	7.441	0,78
- Belgium	2.550	3,71	43.158	4,54
- Denmark	920	1,34	9.121	0,96
- Finland	846	1,23	11.825	1,24
- France	10.219	14,85	81.019	8,52
- Greece	0	0,00	0	0,00
- Ireland	422	0,61	6.127	0,64
- Italy	1.312	1,91	7.725	0,81
- Luxembourg	129	0,19	2.712	0,29
- Netherlands	9.786	14,22	126.866	13,34
- Poland	822	1,19	3.037	0,32
- Portugal	461	0,67	2.126	0,22
- United Kingdom	16.755	24,36	312.919	32,91
- Czech Republic	96	0,14	317	0,03
- Sweden	1.670	2,43	30.338	3,19
- Other EU countries	319	0,46	2.212	0,23
Norway	499	0,73	14.129	1,49
Russia	59	0,09	478	0,05
Switzerland	2.634	3,83	25.293	2,66
Other European countries	274	0,40	1.118	0,12
United States of America	57	0,08	528	0,06
Rest of America	361	0,52	1.024	0,11
African countries	96	0,14	413	0,04
Other countries	447	0,65	3.479	0,37

COS (TABLES ANNEX) - January 2020. Provisional data (4/4)

**Tourist accommodation occupancy survey
(Rural tourist accommodation)**

January 2020

Provisional data

28th February 2020

1. Number of travellers, overnight stays and average stay by Autonomous City and Community

Autonomous Communities	Number of travellers			Number of overnight stays			Average stay
	Total	Residents In Spain	Residents abroad	Total	Residents In Spain	Residents abroad	
TOTAL	159,625	140,182	19,442	362,951	285,432	77,519	2.27
Andalucía	14,814	12,425	2,389	36,043	26,052	9,990	2.43
Aragón	9,240	8,653	587	23,663	21,719	1,944	2.56
Asturias, Principado de	7,862	7,656	206	16,452	15,908	544	2.09
Balears, Illes	5,601	2,531	3,070	16,850	4,778	12,073	3.01
Canarias	8,256	1,994	6,263	39,218	5,299	33,919	4.75
Cantabria	6,083	5,818	265	12,304	10,754	1,550	2.02
Castilla y León	29,465	28,433	1,032	55,860	53,943	1,918	1.90
Castilla-La Mancha	11,587	10,747	841	24,896	22,381	2,515	2.15
Cataluña	25,244	23,753	1,491	50,483	45,247	5,236	2.00
Comunitat Valenciana	8,050	7,181	869	17,370	14,076	3,293	2.16
Extremadura	8,450	7,625	825	17,888	16,141	1,747	2.12
Galicia	4,047	3,531	516	6,052	5,390	662	1.50
Madrid, Comunidad de	6,721	6,439	282	12,162	11,765	397	1.81
Murcia, Región de	3,119	3,009	111	5,640	5,427	212	1.81
Navarra, Comunidad Foral de	5,431	5,266	165	15,219	14,781	437	2.80
País Vasco	4,479	3,972	507	9,950	8,904	1,047	2.22
Rioja, La	1,176	1,151	25	2,901	2,866	35	2.47
Ceuta	-	-	-	-	-	-	-
Melilla	-	-	-	-	-	-	-
Annual rate	14.54	15.77	6.38	12.79	13.51	10.20	-1.52
Cumulative annual rate	14.54	15.77	6.38	12.79	13.51	10.20	-1.52

2. Open rural establishments, bed-places, occupancy rates and employed personnel by Autonomous City and Community

Autonomous Communities	Estimated open rural establishments	Estimated bed-places	Occupancy rate			Employed personnel
			Of bed-places	Of bed-places at weekend	Of bedrooms	
TOTAL	15,500	143,809	8.13	15.78	10.86	21,810
Andalucía	2,336	18,884	6.15	11.56	8.87	3,324
Aragón	1,083	8,696	8.76	18.02	10.92	1,290
Asturias, Principado de	1,143	10,805	4.91	7.63	6.73	1,573
Balears, Illes	178	3,337	16.29	24.16	20.82	642
Canarias	599	3,806	33.13	33.60	52.18	837
Cantabria	348	5,090	7.79	14.35	10.47	589
Castilla y León	3,230	27,617	6.52	14.81	8.19	4,245
Castilla-La Mancha	1,584	13,278	6.04	13.89	8.55	2,020
Cataluña	1,769	15,792	10.29	24.15	12.82	2,333
Comunitat Valenciana	763	8,993	6.23	11.80	9.79	1,148
Extremadura	628	7,245	7.96	15.58	11.62	942
Galicia	326	4,077	4.77	11.50	5.54	565
Madrid, Comunidad de	208	3,412	11.49	24.89	15.76	610
Murcia, Región de	158	2,505	7.25	17.70	8.79	247
Navarra, Comunidad Foral de	748	5,996	8.18	16.02	9.71	948
País Vasco	304	3,315	9.66	13.22	12.64	388
Rioja, La	94	961	9.70	21.32	11.03	109
Ceuta	-	-	-	-	-	-
Melilla	-	-	-	-	-	-
Annual rate	1.77	1.60	11.08	2.96	11.98	2.63
Cumulative annual rate	1.77	1.60	11.08	2.96	11.98	2.63

3. Number of travellers, overnight stays and average stay in Provinces with the greatest number of overnight stays¹

Provinces	Number of travellers			Number of overnight stays			Average stay
	Total	Residents In Spain	Residents abroad	Total	Residents In Spain	Residents abroad	
St Cruz de Tenerife	6,292	1,502	4,790	31,270	4,019	27,251	4.97
Girona	11,212	10,657	555	21,474	19,883	1,591	1.92
Barcelona	7,197	6,658	540	14,695	12,085	2,610	2.04
Málaga	4,397	3,120	1,277	14,468	8,102	6,366	3.29
Cáceres	6,660	5,911	749	14,236	12,851	1,385	2.14
Huesca	4,752	4,340	412	12,786	11,721	1,066	2.69
Ávila	5,333	5,330	3	12,237	12,231	6	2.29
Segovia	6,946	6,716	230	10,949	10,697	251	1.58
Lleida	4,870	4,795	75	10,861	10,436	425	2.23
Palmas, Las	1,965	491	1,473	7,948	1,280	6,668	4.05
Guadalajara	3,127	2,398	729	6,923	4,912	2,011	2.21
Alicante\Alacant	3,008	2,423	585	6,791	5,042	1,749	2.26
Burgos	3,630	3,575	55	6,711	6,621	89	1.85
Salamanca	3,758	3,533	225	6,664	6,262	403	1.77
Teruel	3,013	2,946	67	6,563	6,474	89	2.18

¹ Provinces belonging to uniprovincial Autonomous Communities have not been included because they are reflected in previous tables.

4. Open rural establishments, bed-places, occupancy rates and employed personnel in Provinces with the highest number of overnight stays¹

Provinces	Estimated open rural establishments	Estimated bed-places	Occupancy rate			Employed personnel
			Of bed-places	Of bed-places at weekend	Of bedrooms	
St Cruz de Tenerife	507	3,015	33.37	32.60	53.71	656
Girona	547	5,624	12.26	27.90	14.95	668
Barcelona	520	4,530	10.45	27.13	13.49	801
Málaga	1,346	9,006	5.18	8.16	7.87	1,980
Cáceres	488	5,595	8.20	16.50	11.83	746
Huesca	563	4,302	9.57	17.51	11.73	655
Ávila	725	5,764	6.83	16.52	9.31	797
Segovia	413	3,818	9.24	20.84	11.07	564
Lleida	472	3,456	10.13	22.82	12.50	598
Palmas, Las	92	791	32.24	37.42	46.37	180
Guadalajara	199	2,136	10.43	24.36	12.42	287
Alicante\Alacant	193	2,300	9.52	16.86	15.05	312
Burgos	381	3,785	5.72	15.32	7.47	457
Salamanca	489	3,785	5.68	11.68	6.24	743
Teruel	328	2,769	7.62	20.68	9.64	415

¹ Provinces belonging to uniprovincial Autonomous Communities have not been included because they are reflected in previous tables.

5. Number of travellers, overnight stays, average stay, capacity and occupancy rates in areas with the highest number of overnight stays

Areas	Number of travellers		Number of overnight stays			Capacity		Occupancy rate		
	Residents In Spain	Residents abroad	Residents In Spain	Residents abroad	Average stay	Estimated open rural establish.	Estimated bed-places	Of bed-places	Of bed-places at weekend	Of bedrooms
Pirineus	11,521	167	22,636	635	1.99	724	6,109	12.24	30.77	13.49
Isla de Mallorca	1,797	2,714	3,594	11,281	3.30	164	3,066	15.65	23.33	20.16
Isla de Tenerife	976	2,681	1,978	12,528	3.97	120	1,259	37.03	37.93	50.38
Pirineo Navarro	4,520	160	12,220	427	2.70	633	5,002	8.15	16.89	9.62
Pirineo Aragonés	4,198	415	11,319	1,021	2.67	516	4,036	9.85	18.76	11.80
P.Natural de Corona Forestal	790	2,244	1,522	10,251	3.88	82	932	40.58	41.27	55.19
Isla de La Palma	275	1,293	1,189	10,141	7.23	274	1,165	31.28	29.26	58.68
Costa Brava	5,387	464	9,903	1,381	1.93	323	3,358	10.83	22.90	14.23
P.Nacional Teide	622	2,155	1,271	9,841	4.00	73	862	41.40	40.77	56.54
Extremadura Norte	4,035	433	7,745	669	1.88	314	3,735	7.26	15.48	9.68
Parque Nacional Sierra de Guadarram	4,784	253	6,940	308	1.44	92	1,414	16.53	35.43	19.97
P.Nacional Taburiente	195	856	826	5,856	6.36	152	661	32.44	30.68	57.53
Isla de La Gomera	149	725	488	3,955	5.08	69	421	34.06	30.58	55.94
P.Nacional Garajonay	149	725	488	3,955	5.08	69	421	34.06	30.58	55.94
P.Nacional Picos de Europa	2,336	64	4,222	135	1.82	204	1,690	8.31	17.03	10.97

6. Number of travellers, overnight stays, average stay, capacity, occupancy rates and employed personnel per rural house by Autonomous City and Community²

Autonomous Communities	Number of travellers		Number of overnight stays			Capacity		Occupancy rate		Employed personnel
	Residents In Spain	Residents abroad	Residents In Spain	Residents abroad	Average stay	Estimated open rural establish.	Estimated bed-places	Of bed-places	Of bed-places at weekend	
TOTAL	103,805	12,993	216,909	54,823	2.33	13,578	112,477	7.78	15.69	17,692
Andalucía	12,362	2,372	25,941	9,950	2.44	2,334	18,768	6.17	11.57	3,320
Aragón	7,282	544	18,030	1,857	2.54	891	7,045	9.09	18.69	1,075
Asturias, Principado de	2,479	40	5,547	149	2.26	710	4,505	4.08	5.64	824
Balears, Illes	1,697	1,899	3,384	6,477	2.74	89	1,553	20.48	32.53	202
Canarias	983	3,566	3,276	23,150	5.81	570	2,974	28.54	29.10	673
Cantabria	1,886	51	3,725	98	1.97	215	2,643	4.67	8.55	322
Castilla y León	19,250	316	39,040	564	2.02	2,960	22,217	5.74	13.55	3,564
Castilla-La Mancha	10,348	835	21,770	2,507	2.17	1,559	12,726	6.15	14.02	1,980
Cataluña	23,753	1,491	45,247	5,236	2.00	1,769	15,792	10.29	24.15	2,333
Comunitat Valenciana	5,696	749	11,872	2,648	2.25	715	6,443	7.27	13.62	1,011
Extremadura	4,428	333	8,572	838	1.98	407	3,847	7.89	18.41	528
Galicia	2,511	393	3,993	497	1.55	241	2,928	4.93	12.34	405
Madrid, Comunidad de	1,219	0	3,603	0	2.96	85	1,035	11.21	18.15	100
Murcia, Región de	2,188	63	4,340	125	1.98	149	2,220	6.48	16.86	211
Navarra, Comunidad Foral de	4,435	125	11,582	250	2.60	627	5,101	7.47	15.09	808
País Vasco	2,140	192	4,119	441	1.96	163	1,718	8.54	12.49	225
Rioja, La	1,151	25	2,866	35	2.47	94	961	9.70	21.32	109
Ceuta	-	-	-	-	-	-	-	-	-	-
Melilla	-	-	-	-	-	-	-	-	-	-

² To facilitate the comparability between data from different Autonomous Communities (and because of the different regulation and different characteristics), a group called rural house has been created, with those establishments with similar typology (location, capacity, etc...).

The variables included in the previous table have been estimated with that type of establishments.

9. Travellers and overnight stays by country of residence

Results by countries	Travellers		Overnight stays	
	Total	%	Total	%
TOTAL	159,625	100.00	362,951	100.00
Residents in Spain	140,182	87.82	285,432	78.64
Residents abroad	19,442	12.18	77,519	21.36
Total Residents abroad	19,442	100.00	77,519	100.00
Total Residents in EU (excluding Spain)	14,095	72.49	61,750	79.66
- Germany	4,297	22.10	25,928	33.45
- Belgium	532	2.74	1,947	2.51
- France	2,354	12.11	6,708	8.65
- Italy	493	2.54	2,018	2.60
- Netherlands	1,111	5.71	4,531	5.84
- Portugal	604	3.10	2,363	3.05
- United Kingdom	3,011	15.49	11,069	14.28
Switzerland	326	1.68	1,804	2.33
Other European countries	3,116	16.03	12,788	16.50
United States of America	606	3.12	2,136	2.75
Other countries	2,992	15.39	6,226	8.03

Tourist Accommodation Occupancy Survey Hostels Occupancy Survey (HOS)

January 2020

Provisional data

28th February 2020

1. Travellers, overnight stays and average stay by Autonomous Cities and Communities

Autonomous cities and communities	Travellers			Overnight stays			Average stay
	Total	Residents in Spain	Residents abroad	Total	Residents in Spain	Residents abroad	
TOTAL	40.034	24.748	15.286	119.280	71.551	47.729	2,98
Andalucía	5.083	4.345	738	21.479	18.984	2.495	4,23
Aragón	3.653	3.561	92	10.355	9.996	359	2,83
Asturias, Principado de	-	-	-	-	-	-	-
Balears, Illes	-	-	-	-	-	-	-
Canarias	3.167	597	2.570	10.132	1.629	8.503	3,20
Cantabria	406	406	0	679	679	0	1,67
Castilla y León	1.226	1.218	8	2.863	2.855	8	2,33
Castilla - La Mancha	493	393	100	740	619	121	1,50
Cataluña	13.473	8.138	5.335	41.050	22.549	18.501	3,05
Comunitat Valenciana	4.712	1.731	2.981	12.491	3.521	8.970	2,65
Extremadura	-	-	-	-	-	-	-
Galicia	-	-	-	-	-	-	-
Madrid, Comunidad de	3.802	1.485	2.317	8.739	3.179	5.560	2,30
Murcia, Región de	700	504	196	1.355	872	483	1,94
Navarra, Comunidad Foral de	374	282	92	951	711	240	2,54
País Vasco	1.770	1.451	319	4.499	3.858	641	2,54
Rioja, La	129	126	3	318	315	3	2,47
Ceuta	-	-	-	-	-	-	-
Melilla	-	-	-	-	-	-	-
Annual rate	-2,14	-3,57	0,26	-9,95	-14,82	-1,51	-7,98
Cumulative annual rate	-2,14	-3,57	0,26	-9,95	-14,82	-1,51	-7,98

2. Open establishments, capacity, occupancy and number of staff by autonomous cities and communities

Autonomous cities and communities	Capacity		Occupancy rate		Employed personnel
	Estimated open establishments	Estimated bed-places	Of bed-places	Of bed-places at weekend	
TOTAL	193	19.689	19,54	23,24	1.449
Andalucía	13	2.821	24,56	28,13	180
Aragón	18	1.644	20,32	18,16	75
Asturias, Principado de	-	-	-	-	-
Balears, Illes	-	-	-	-	-
Canarias	28	641	51,01	58,39	53
Cantabria	6	400	5,47	10,27	30
Castilla y León	19	1.724	5,36	7,25	152
Castilla - La Mancha	21	2.063	1,16	3,83	42
Cataluña	27	3.882	34,11	45,12	351
Comunitat Valenciana	10	1.768	22,79	23,26	102
Extremadura	-	-	-	-	-
Galicia	-	-	-	-	-
Madrid, Comunidad de	4	486	57,98	59,55	136
Murcia, Región de	5	489	8,94	15,43	18
Navarra, Comunidad Foral de	5	335	9,15	9,54	40
País Vasco	15	1.698	8,55	7,78	110
Rioja, La	5	236	4,34	4,37	8
Ceuta	-	-	-	-	-
Melilla	-	-	-	-	-
Annual rate	-1,67	-1,47	-8,61	-2,59	-1,61
Cumulative annual rate	-1,67	-1,47	-8,61	-2,59	-1,61

3. Travellers and overnight stays by countries of residence

Countries	Travellers		Overnight stays		Average stay
	Total	%	Total	%	
TOTAL	40.034	100,00	119.280	100,00	2,98
Residents in Spain	24.748	61,82	71.551	59,99	2,89
Residents abroad	15.286	38,18	47.729	40,01	3,12
TOTAL residents abroad	15.286	100,00	47.729	100,00	3,12
TOTAL residents in E.U. (excluding Spain)	7.640	49,98	23.096	48,39	3,02
- Germany	1.307	8,55	4.326	9,06	3,31
- Belgium	264	1,73	660	1,38	2,50
- France	1.801	11,78	5.057	10,59	2,81
- Italy	1.111	7,27	3.738	7,83	3,37
- Netherlands	365	2,39	955	2,00	2,62
- Portugal	176	1,15	505	1,06	2,87
- United Kingdom	1.362	8,91	4.387	9,19	3,22
Switzerland	149	0,97	303	0,63	2,03
Other European countries	2.611	17,08	7.859	16,47	3,01
United States of America	1.432	9,37	4.373	9,16	3,05
Other countries	4.708	30,80	15.566	32,61	3,31

HOLIDAY DWELLING PRICE INDEX (HDPI)

January 2020

Provisional data

28th February 2020

National general index and breakdown by rates

	Index	Annual variation rate
TOTAL	135.38	1.38
Normal	125.84	1.13
Weekend	125.02	2.94
Tour-operators and travel agencies	142.56	1.38

National general index and breakdown by modalities

	Index	Annual variation rate
TOTAL	135.38	1.38
Studio	127.89	1.78
Dwellings 2/4 bedplaces	136.98	1.55
Dwellings 4/6 bedplaces	136.54	0.47

Tourist Campsite Price Index (TCSPI). 2002 Base

January 2020

Provisional data

28th February 2020

National general index and breakdown by rates

	Index	Annual variation rate
TOTAL	155,60	2,51
Normal rate	152,45	3,77
Special rate for stays up to one month	133,22	-0,87
Special rate for stays longer than one month	162,40	1,73
Bungalow rate ¹	106,48	2,81

¹2014 Base

National general index and breakdown by categories

	Index	Annual variation rate
TOTAL	155,60	2,51
Luxury and first	171,07	4,36
Second	144,94	0,96
Third	163,53	0,94

TCSPI (ANNEX OF TABLES) - January 2020. Provisional data

Rural Tourism Accommodation Price Index (RTAPI)

January

Provisional data

28th February 2020

General Autonomous Cities and Communities and national indices

	Index	Annual variation rate
TOTAL	146,22	0,95
Andalucía	149,18	2,84
Aragón	176,54	5,61
Asturias, Principado de	161,65	5,31
Balears, Illes	99,37	-6,64
Canarias	110,93	-1,27
Cantabria	187,12	-2,80
Castilla y León	146,82	0,27
Castilla - La Mancha	139,09	-0,69
Cataluña	174,69	5,14
Comunitat Valenciana	151,76	1,81
Extremadura	90,58	-2,42
Galicia	148,41	-6,73
Madrid, Comunidad de	139,93	-1,71
Murcia, Región de	177,75	9,86
Navarra, Comunidad Foral de	194,98	8,13
País Vasco	180,92	1,57
Rioja, La	174,68	4,50
Ceuta	-	-
Melilla	-	-

National general index and breakdown by rates

	Index	Annual variation rate
TOTAL	146,22	0,95
Normal	143,50	0,82
Weekend	149,96	1,04

National general index and breakdown by rent modality

	Index	Annual variation rate
TOTAL	146,22	0,95
Shared use (in case of per room rent modality)	122,85	-0,54
Full use (rent of entire dwelling)	157,32	1,46