

**Non-Hotel Tourist Accommodation Occupancy Survey
February 2008. Provisional data**

**Overnight stays in collective non-hotel accommodation increase
4.1% in February, as compared to the same month in 2007**

Overnight stays in non-hotel tourist accommodation (holiday dwellings, campsites and rural tourism establishments) surpassed 5.6 million in February, 4.1% more than in the same month of the previous year. Resident overnight stays increased 8.2%, as did non-resident overnight stays, with an interannual rate of 3.2%.

Given the interannual increase **in the number of travellers (5.3%)**, the average stay decreased 1.2%, as compared with February 2007, and stood at seven nights per traveller.

Travellers and overnight stays in collective non-hotel tourist accommodation in February were:

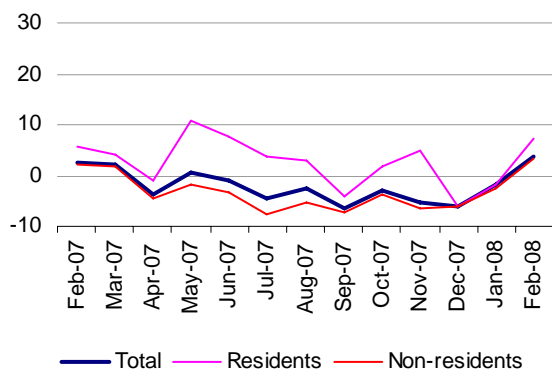
February 2008	Travellers	Overnight stays
Residents in Spain	365,499	1,064,216
EU (not including Spain)	382,352	3,997,390
Rest of the world	58,372	596,365
TOTAL	806,223	5,657,971

Overnight stays in holiday dwellings increase 3.9% in February

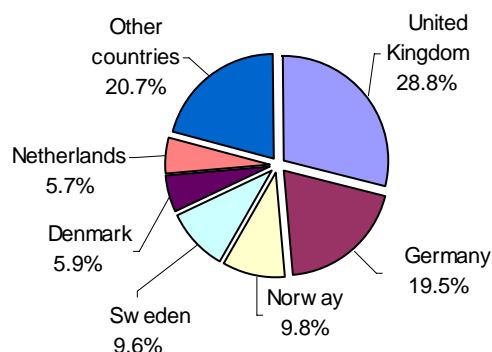
Overnight stays in holiday dwellings exceeded 4.4 million in February, representing a 3.9% increase as compared to the same month of the previous year. Resident overnight stays increased by 7.4% in the interannual rate and non-resident overnight stays increased by 3.4%.

Available holiday dwellings decreased 0.3%, surpassing 358,000 bedplaces. In February, 42.4% of the total available bedplaces were occupied, the same occupancy as in February of 2007. On the other hand, 61.0% out of the total number of available holiday dwellings were occupied, 4.7% less.

Interannual rates of overnight stays in %



Overnight stays of foreign travellers by country of origin in %



Non-resident overnight stays in holiday dwellings represented 87.4% of the total. **The United Kingdom was the main country of origin**, with over 1.1 million overnight stays, 1.2% fewer than in February of last year.

The next country of origin was Germany, with more than 755,000 overnight stays and an interannual rate of -7.1%.

Canarias was the preferred holiday dwelling destination, with more than 3.4 million overnight stays, 1.9% fewer than in February 2007. Andalucía was the second destination of choice, with more than 316,700 overnight stays, for an increase of 14.9%.

Among non-residents, Canarias, Comunitat Valenciana and Andalucía were the preferred destinations. On the other hand, the destinations with the most overnight stays by resident travellers were Canarias, Cataluña and Andalucía.

Canarias presented the **highest occupancy rate**, with 73.5% of available holiday dwellings occupied. It was followed by Comunidad de Madrid (69.1%) and Illes Balears (63.7%).

By **tourist areas**, Gran Canaria was the preferred destination in this accommodation modality, with over 1.4 million overnight stays in February and an occupancy rate of 82.6%.

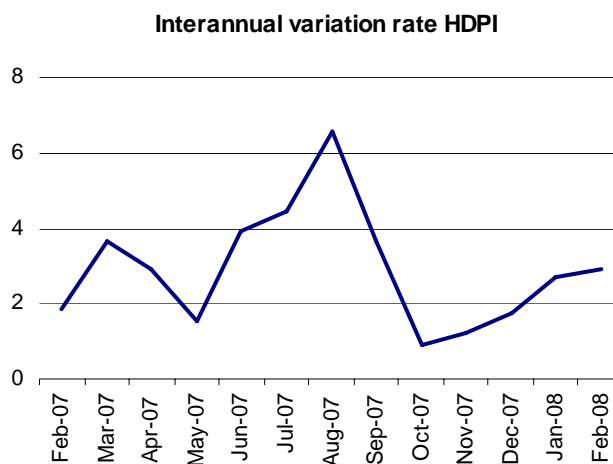
The tourist sites with the greatest number of overnight stays were San Bartolomé de Tirajana, Mogán and Tías.

Prices for holiday dwellings increase 2.9% in February

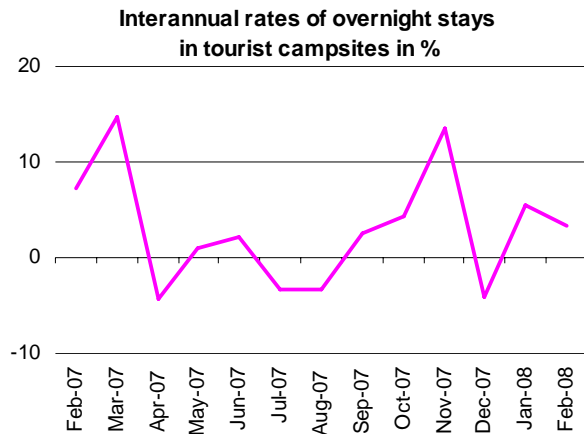
The Holiday Dwelling Price Index registered a 2.9% increase in February, a rate 0.2 points higher than that for the previous month.

The tour-operator and travel agency rate, which carried the greatest weighting in the weight structure for this month (63.3%), registered a 2.6% interannual rate increase.

By modality, 2/4 bedplace holiday dwellings, whose weighting was 68.3%, increased their prices by 2.1%, as compared to February 2007.



Overnight stays in tourist campsites increase 3.3%



Overnight stays in tourist campsites reached almost 875,000 in February, representing a 3.3% interannual rate increase. Overnight stays by resident travellers increased 8.5%, and those by non-resident travellers increased 1.7%.

Tourist campsites offered 276,650 bedplaces, 0.7% less than in the same month of 2007. 38.4% of the available lots were occupied, for a 2.0% decrease in the interannual rate. The weekend occupancy rate by lot reached 40.2%, that is, 0.2% higher than in February 2007.

75.3% of overnight stays in holiday campsites were by non-residents. **The United Kingdom was the main country of origin** with 38.5% of overnight stays by non-residents (6.6% higher). The following country of origin was Germany.

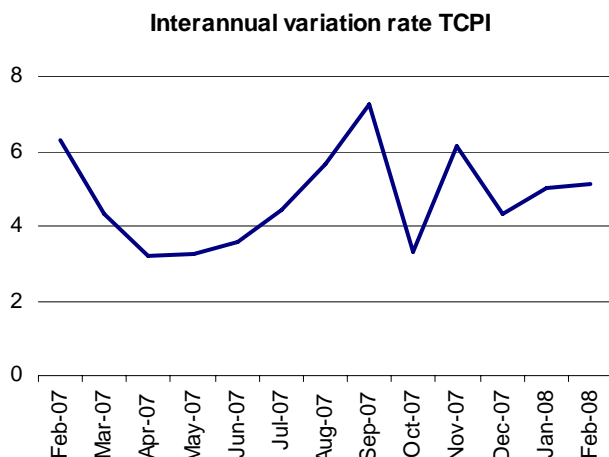
Comunitat Valenciana was the preferred destination for camping, with over 385,970 overnight stays, 11.7% higher than in February 2007. Andalucía was the second destination of choice, with over 189,700 overnight stays, for an increase of 11.0%.

Among non-residents, Comunitat Valenciana, Andalucía and Región de Murcia were the preferred destinations. On the other hand, Cataluña, Comunitat Valenciana and Andalucía were the destinations with the most overnight stays by resident travellers.

In February, **the highest campsite occupancy rate** was registered in **Comunitat Valenciana** (with 60.1% of the available lots). It was followed by La Rioja (59.9%) and Región de Murcia (59.7%).

On a **tourist area basis**, Costa Blanca was the preferred destination for camping, with more than 240,270 overnight stays and an occupancy rate of 74.8%. The **tourist destinations** with the most overnight stays were Benidorm, Cartagena and Mazarrón.

Prices of tourist campsites increase 5.1%



The Tourist Campsite Price Index interannual growth rate increased 5.1% in February. The *normal* rate, which had the greatest weight in the weight structure for this month (67.8%), increased 4.3%.

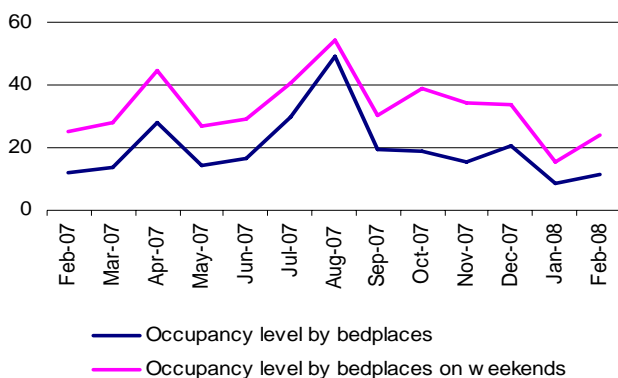
Regarding categories, second class, with a 68.3% weight in February, recorded an interannual increase of 4.7%.

Overnight stays by residents in rural tourist accommodation increase 8.2% in February, as compared to the same month of the previous year

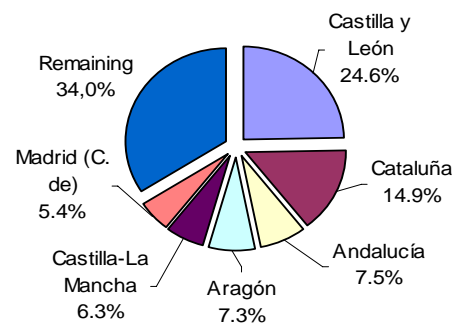
There were almost 351,600 overnight stays in rural tourist accommodation in February, an 87.7% increase with regard to the same month of the previous year. Overnight stays by residents increased 8.2%, while non-resident stays increased 5.8%.

Rural tourist accommodation offered 104,980 bedplaces in February, 8.8% more than in the same month of 2007. Of these bedplaces, 11.5% were occupied, representing a 3.7% decrease. The weekend occupancy level stood at 24.3%, 3.9% more than in February of the previous year.

Evolution of occupancy levels by bedplaces and by bedplaces on weekends



Distribution of overnight stays of Spanish travellers in %



Castilla y León was the preferred destination in rural tourist accommodation, with over 74,200 overnight stays, 8.7% more than in February 2007. Cataluña was the second destination of choice, with more than 45,700 overnight stays (12.9% higher).

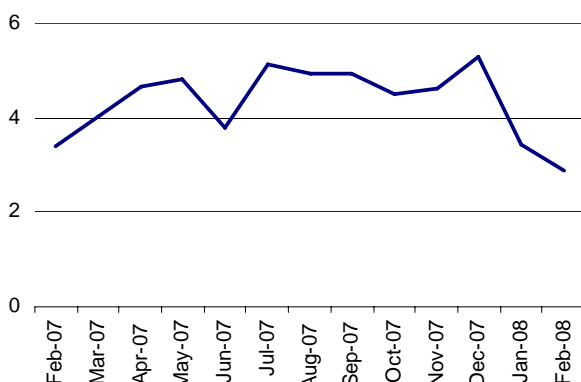
Among non-residents, Canarias was the preferred destination. For their part, the destinations with the most overnight stays by resident travellers were Castilla y León, Cataluña and Andalucía.

Canarias reached the highest level of occupancy of rural tourist accommodations in February, with 29.5% of the available bedplaces. It was followed by Illes Balears (21.2%) and Comunidad de Madrid (17.9%).

On a **tourist area basis**, Pirineo Catalán was the preferred destination, with almost 24,900 overnight stays, while Parque Nacional del Teide registered the highest occupancy level (35.4%).

Rural tourist accommodation prices increase 2.9%

Interannual variation rate RTAPI



The Rural Tourism Accommodation Price Index showed an interannual growth of 2.9% in February. The weekend rate, which had the greatest weight in the weight structure for this month (63.9%), increased 3.2%.

By rent modality, complete use, with a weighting of 70.3%, recorded an interannual increase of 2.8%.

Annex

Evolution of travellers and overnight stays in all Spanish collective tourist accommodation

Overnight stays in all Spanish collective tourist accommodations (hotels, holiday dwellings, campsites and rural tourist accommodations) **registered a 7.8% interannual increase in February**. Resident overnight stays grew by 9.0%, and non-resident by 7.0%.

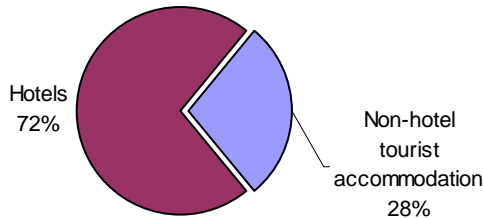
The average stay increased 0.3%, standing at 3.4 overnight stays per traveller.

Travellers and overnight stays in collective tourist accommodation were:

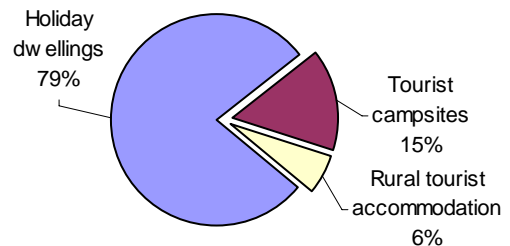
February 2008	Hotels	Holiday dwellings	Campsites	Rural T.	Total
Travellers	5,231,601	518,787	131,300	156,137	6,037,825
Residents	3,319,523	123,284	96,111	146,104	3,685,022
Non-residents	1,912,078	395,502	35,189	10,033	2,352,802
Overnight stays	14,812,984	4,431,346	874,990	351,634	20,470,954
Residents	7,025,577	557,844	216,419	289,953	8,089,793
Non-residents	7,787,407	3,873,502	658,572	61,681	12,381,162

Of the total overnight stays in collective tourist accommodation in February, 72% were accounted for at hotels, and 28% were at non-hotel tourist accommodation.

Distribution of overnight stays in tourist accommodation in %



Distribution of overnight stays of non-hotel tourist accommodation by modality in %



The **main countries of origin** in overall regulated tourist accommodation were Germany with 25.7% of the total number of non-resident overnight stays, United Kingdom with 25.1%, and Netherlands with 4.8%.

Canarias was the **preferred destination** regarding overall Spanish tourist accommodations, with more than 7.4 million overnight stays, 7.4% more than in February 2007. It was followed by Andalucía, with more than 3.1 million overnight stays (9.0% higher) and Comunitat Valenciana with more than 2.2 million overnight stays (5.7% higher).

The preferred destinations of non-residents were Canarias, Andalucía and Comunitat Valenciana. On the other hand, Andalucía, Cataluña and Comunitat Valenciana were the destinations with the most overnight stays by residents.

For further information see INEbase-www.ine.es/en/welcome_en.htm All press releases at: www.ine.es/en/prensa/prensa_en.htm

Press office: Telephone: 91 583 93 63 / 94 08 – Fax: 91 583 90 87 - gprensa@ine.es

Information area: Telephone: 91 583 91 00 – Fax: 91 583 91 58 – www.ine.es/infoine

Tourist Accommodation Occupancy Survey Campsite Occupancy Survey (COS)

February 2008

Provisional data

1. Travellers, overnight stays and average stay by category of establishment

Category	Number of travellers			Number of overnight stays			Average stay
	Total	Residents in Spain	Residents abroad	Total	Residents in Spain	Residents abroad	
TOTAL	131,300	96,111	35,189	874,990	216,419	658,572	6.66
Luxury and first-class	54,185	37,798	16,387	353,750	80,385	273,365	6.53
Second-class	66,216	48,409	17,807	497,124	118,546	378,578	7.51
Third-class	10,900	9,904	995	24,117	17,488	6,629	2.21
Interannual rate	8.52	12.96	-2.00	3.29	8.53	1.67	-4.82
Cumulative interannual rate	4.44	6.86	-0.88	4.34	7.65	3.40	-0.10

2. Open establishments, capacity, occupancy and number of staff by category of establishments

Category	Estimated open establishments	Capacity		Occupied pitches	Occupancy rate per pitch	Weekend occupancy rate	Employed personnel
		Estimated bedplaces	Estimated pitches				
TOTAL	434	276,656	85,170	949,311	38.43	40.18	2,892
Luxury and first-class	100	102,155	29,685	336,482	39.09	41.86	1,198
Second-class	266	158,915	48,865	564,104	39.81	40.73	1,512
Third-class	68	15,585	6,620	48,725	25.38	29.88	182
Interannual rate	1.56	-0.67	1.60	3.17	-1.95	0.19	5.48
Cumulative interannual rate	1.08	-1.67	0.34	2.54	0.33	-0.43	3.11

3. Travellers, overnight stays and average stay by autonomous communities

Autonomous Communities	Number of travellers			Number of overnight stays			Average stay
	Total	Residents in Spain	Residents abroad	Total	Residents in Spain	Residents abroad	
TOTAL	131,300	96,111	35,189	874,990	216,419	658,572	6.66
Andalucía	29,478	17,065	12,413	189,715	47,567	142,148	6.44
Aragón	6,573	6,168	405	14,054	13,234	820	2.14
Asturias (P. de)	809	721	88	1,510	1,225	285	1.87
Balears (Illes)	-	-	-	-	-	-	-
Canarias	984	835	149	8,488	4,185	4,303	8.63
Cantabria	987	918	69	1,925	1,841	84	1.95
Castilla y León	2,440	1,556	885	3,821	2,488	1,333	1.57
Castilla-La Mancha	657	468	189	1,455	1,103	351	2.21
Cataluña	47,938	41,920	6,018	96,198	65,108	31,090	2.01
Comunitat Valenciana	20,707	10,402	10,305	385,970	37,957	348,013	18.64
Extremadura	2,287	1,999	288	4,292	3,479	813	1.88
Galicia	438	269	169	683	449	234	1.56
Madrid (C. de)	7,233	6,563	669	21,862	18,122	3,740	3.02
Murcia (Región de)	5,290	2,812	2,478	133,811	10,498	123,313	25.29
Navarra (C. Foral de)	1,718	1,645	73	3,400	3,242	158	1.98
País Vasco	1,415	686	729	2,851	1,422	1,429	2.01
Rioja (La)	2,346	2,083	263	4,956	4,500	456	2.11
Ceuta y Melilla	-	-	-	-	-	-	-

4. Open establishments, capacity, occupancy and number of staff by autonomous community

Autonomous Communities	Estimated open establishments	Capacity		Occupied pitches	Occupancy rate per pitch	Weekend occupancy rate	Employed personnel
		Estimated bedplaces	Estimated pitches				
TOTAL	434	276,656	85,170	949,311	38.43	40.18	2,892
Andalucía	105	65,209	22,275	148,260	22.95	24.38	711
Aragón	31	13,238	4,367	34,618	27.33	27.03	162
Asturias (P. de)	9	4,593	1,446	7,372	17.57	17.93	25
Balears (Illes)	-	-	-	-	-	-	-
Canarias	3	1,984	560	6,224	38.32	39.98	20
Cantabria	8	4,668	1,437	13,661	32.79	33.01	24
Castilla y León	23	7,329	1,978	10,152	17.70	24.13	59
Castilla-La Mancha	9	3,329	946	7,092	25.86	24.95	26
Cataluña	75	62,901	16,488	197,046	41.21	45.12	442
Comunitat Valenciana	86	56,260	17,500	306,088	60.31	59.87	691
Extremadura	8	2,524	1,422	9,961	24.16	24.61	48
Galicia	15	4,719	1,440	4,217	10.10	10.51	30
Madrid (C. de)	20	17,611	5,808	74,073	43.98	48.23	302
Murcia (Región de)	20	15,280	4,485	77,650	59.71	61.76	195
Navarra (C. Foral de)	10	5,764	1,643	11,520	24.18	22.98	73
País Vasco	8	5,261	1,448	7,915	18.85	23.13	42
Rioja (La)	6	5,985	1,927	33,462	59.88	57.37	45
Ceuta y Melilla	-	-	-	-	-	-	-

5. Travellers and overnight stays, average stay, capacity, occupancy and number of staff by provinces with the greatest number of overnight stays*

Provinces	Travellers		Overnight stays		Average stay	Estimated open establishments	Estimated pitches	Occupancy rate per pitch	Employed personnel
	Residents in Spain	Residents abroad	Residents in Spain	Residents abroad					
	Alicante/Alacant	2,170	4,952	12,114					
Castellón/Castelló	4,101	3,550	11,969	75,763	11.47	31	5,646	46.50	186
Málaga	2,530	3,146	7,423	59,522	11.79	24	3,935	42.94	151
Barcelona	25,557	4,256	30,143	24,411	1.83	20	5,530	55.54	189
Valencia/València	4,131	1,803	13,873	35,378	8.30	24	4,599	53.90	197
Almería	803	2,068	1,901	38,915	14.22	17	2,408	31.16	80
Girona	9,164	781	20,124	3,889	2.41	25	5,434	25.44	126
Granada	1,778	2,035	4,421	18,444	6.00	19	2,254	26.38	81
Huelva	3,448	1,027	14,459	7,683	4.95	11	5,875	11.81	131
Cádiz	3,276	1,639	7,443	11,612	3.88	15	3,101	25.14	118
Huesca	5,558	219	12,018	412	2.15	24	3,848	27.48	144
Lleida	4,797	60	10,716	136	2.23	18	2,811	44.89	50
Sevilla	1,420	1,263	3,893	3,407	2.72	8	1,444	23.28	81
Tarragona	2,403	921	4,125	2,655	2.04	12	2,713	39.78	77
Córdoba	2,614	926	4,475	2,135	1.87	6	2,627	5.74	47

* Provinces belonging to uniprovincial Autonomous Communities have not been included because they are reflected in previous tables.

6. Travellers, overnight stays, average stay, open establishments, capacity, occupancy and number of staff from tourist areas with the greatest number of overnight stays

Tourist areas	Number of travellers		Number of overnight stays		Average stay	Estimated open establishments	Estimated pitches	Occupancy rate per pitch	Employed personnel
	Residents in Spain	Residents abroad	Residents in Spain	Residents abroad					
	Costa Blanca	2,029	4,763	11,881					
Costa Cálida	567	1,855	4,099	110,948	29.00	10	3,556	62.93	131
Costa del Sol	1,147	2,824	5,167	58,368	16.00	13	3,278	48.01	118
Costa Azahar	3,005	2,910	10,080	47,975	9.81	24	4,477	45.59	142
Costa Valencia	1,060	1,637	7,202	34,684	15.53	8	1,837	49.36	109
Costa de Almería	702	2,033	1,756	35,443	13.60	12	2,056	32.56	61
Pirineo Catalán	17,139	79	35,349	158	2.06	37	5,406	50.20	137
Costa de la Luz (Huelva)	3,107	1,012	13,927	7,659	5.24	9	5,741	10.58	125
Costa Tropical	413	914	1,397	15,393	12.65	6	1,180	39.54	36
P.N. Doñana	1,794	892	13,589	3,141	6.23	5	3,715	5.87	71
Costa de la Luz (Cádiz)	2,219	1,224	5,693	10,630	4.74	10	2,591	21.90	83
Costa del Maresme	6,447	570	9,009	3,347	1.76	5	1,537	31.94	24
Pirineo Aragonés	5,456	207	11,916	400	2.17	23	3,788	27.89	143
Costa Brava	2,509	781	5,734	3,889	2.92	13	3,820	16.72	74
Costa Daurada	2,403	921	4,125	2,655	2.04	12	2,713	39.78	77

7. Travellers, overnight stays, average stay, open establishments, capacity, occupancy and number of staff from tourist sites with the greatest number at overnights stays

Tourist sites	Number of guests		Number of overnight stays		Average stay	Estimated open establishments	Estimated pitches	Occupancy rate per pitch	Employed personnel
	Residents in Spain	Residents abroad	Residents in Spain	Residents abroad					
	Benidorm	146	1,669	2,357					
Cartagena	58	874	2,371	62,330	29.00	3	2,144	53.77	74
Mazarrón	156	430	793	40,618	29.00	3	861	87.40	35
Oliva	309	1,260	1,901	31,928	21.56	6	1,392	50.31	83
Marbella	275	1,376	3,285	26,464	18.02	3	1,269	64.20	55
Benicasim/Benicassim	226	1,454	1,837	21,694	14.01	5	1,023	49.81	53
Vélez-Málaga	365	496	1,301	16,833	21.06	4	805	49.34	29
Peñíscola	801	527	1,663	14,229	11.97	6	1,124	51.87	26
Campello (El)	147	453	3,786	8,256	20.07	3	320	74.25	20
Motril	320	510	973	8,337	11.22	3	726	42.22	24
Fortuna	170	295	768	7,786	18.40	3	220	71.94	13
Isla Cristina	952	159	1,220	2,292	3.16	3	1,253	13.22	25

8. Travellers and overnight stays by countries of residence

Countries	Travellers		Overnight stays	
	Total	%	Total	%
TOTAL	131,300	100.00	874,990	100.00
Residents in Spain	96,111	73.20	216,419	24.73
Residents abroad	35,189	26.80	658,572	75.27
TOTAL residents abroad	35,189	100.00	658,572	100.00
TOTAL residents in E.U. (excluding Spain)	33,348	94.77	639,563	97.11
- Germany	7,353	20.90	184,008	27.94
- Austria	212	0.60	3,948	0.60
- Belgium	1,079	3.07	22,193	3.37
- Denmark	1,047	2.98	12,291	1.87
- Finland	377	1.07	6,456	0.98
- France	4,575	13.00	29,512	4.48
- Greece	10	0.03	247	0.04
- Ireland	552	1.57	5,380	0.82
- Italy	381	1.08	6,184	0.94
- Luxembourg	65	0.18	1,268	0.19
- Netherlands	5,992	17.03	93,434	14.19
- Poland	148	0.42	556	0.08
- Portugal	968	2.75	6,386	0.97
- United Kingdom	9,608	27.31	253,720	38.53
- Czech Republic	85	0.24	934	0.14
- Sweden	709	2.01	12,065	1.83
- Other EU countries	186	0.53	980	0.15
Other European countries	1,303	3.70	15,707	2.38
United States of America	44	0.12	277	0.04
Rest of America	54	0.15	996	0.15
African countries	26	0.07	85	0.01
Other countries	414	1.18	1,944	0.30

Tourist Accommodation Occupancy Survey

(Holiday Dwellings)

February 2008 Provisional data

1. Travellers, overnight stays and average stay by Autonomous Communities

Autonomous Communities	Number of travellers			Number of overnight stays			Average stay
	Total	Residents in Spain	Residents abroad	Total	Residents in Spain	Residents abroad	
TOTAL	518,787	123,284	395,502	4,431,346	557,844	3,873,502	8.54
Andalucía	51,722	25,829	25,893	316,755	79,582	237,172	6.12
Aragón	8,323	7,781	541	26,306	23,303	3,004	3.16
Asturias (P. de)	957	907	50	3,014	2,838	176	3.15
Balears (Illes)	6,449	1,120	5,329	65,172	6,654	58,518	10.11
Canarias	367,240	37,043	330,198	3,417,274	185,984	3,231,290	9.31
Cantabria	1,836	1,583	253	10,805	7,368	3,437	5.89
Castilla y León	1,176	1,065	110	5,234	4,708	527	4.45
Castilla-La Mancha	2,397	2,367	30	6,215	6,061	154	2.59
Cataluña	19,317	12,028	7,289	145,684	101,089	44,595	7.54
C. Valenciana	28,642	10,800	17,842	307,890	67,632	240,258	10.75
Extremadura	1,046	1,017	30	2,336	2,095	241	2.23
Galicia	2,408	1,871	537	8,257	5,868	2,389	3.43
Madrid (C. de)	21,580	15,007	6,573	78,222	41,711	36,511	3.62
Murcia (Región de)	2,299	1,769	530	24,819	12,825	11,993	10.80
Navarra (C. Foral de)	1,674	1,495	178	6,286	4,884	1,402	3.76
País Vasco	809	698	111	4,943	3,124	1,819	6.11
Rioja (La)	911	903	8	2,135	2,118	17	2.34
Ceuta y Melilla	-	-	-	-	-	-	-
Interannual rate	2.45	10.97	0.05	3.86	7.43	3.37	1.38
Cumulative interannual rate	1.64	8.20	0.02	0.91	2.53	0.69	-0.71

2. Capacity, occupancy and number of staff by autonomous communities

Autonomous Communities	Capacity		Occupancy rate		Employed personnel
	Estimated bedplaces	Estimated Holiday dwellings	Per bedplaces	Per Holiday dwellings	
TOTAL	358,048	103,533	42.40	60.95	23,235
Andalucía	39,518	10,534	28.10	41.53	3,425
Aragón	2,990	688	30.07	37.11	227
Asturias (P. de)	2,590	738	4.04	6.07	196
Balears (Illes)	5,248	1,743	43.44	63.66	394
Canarias	206,795	66,516	56.36	73.53	15,263
Cantabria	2,194	637	17.02	30.30	122
Castilla y León	1,040	262	17.36	34.35	99
Castilla-La Mancha	2,190	525	9.80	15.63	197
Cataluña	19,135	4,527	26.03	35.68	831
C. Valenciana	60,159	12,489	17.64	32.73	1,370
Extremadura	755	192	10.62	17.70	58
Galicia	1,860	507	15.31	28.27	121
Madrid (C. de)	5,278	2,242	50.79	69.09	599
Murcia (Región de)	6,569	1,490	13.09	23.19	172
Navarra (C. Foral de)	833	208	25.98	50.66	96
País Vasco	588	174	28.80	55.39	33
Rioja (La)	304	62	23.94	26.55	32
Ceuta y Melilla	-	-	-	-	-
Interannual rate	0.34	0.12	0.03	-4.73	4.36
Cumulative interannual rate	-0.47	-0.51	-0.23	-5.22	-1.10

3. Travellers, overnight stays, capacity, occupancy, total number of staff with greater number of overnight stays *

Provinces	Number of travellers		Overnight stays		Average stay	Capacity		Occupancy rate		Employed personnel
	Residents in Spain	Residents abroad	Residents in Spain	Residents abroad		Estimated bedplaces	Estimated holiday dwelling	Per bedplaces	Per holiday dwelling	
	Las Palmas	25,293	221,900	133,440		2,259,094	9.68	143,896	46,318	
Tenerife	11,749	108,298	52,543	972,196	8.54	62,899	20,197	55.75	72.41	5,245
Alicante/Alacant	5,573	16,223	31,264	220,667	11.56	44,320	9,435	19.61	36.66	1,026
Málaga	5,126	22,037	18,590	210,832	8.45	23,415	6,140	33.70	50.61	2,482
Barcelona	2,526	5,308	59,165	32,198	11.66	5,422	1,652	57.69	68.24	268
Girona	4,776	1,291	27,092	9,003	5.95	9,689	2,060	12.76	15.96	336
Granada	9,738	707	25,001	4,646	2.84	4,155	1,144	24.46	29.37	290
Castellón/Castelló	2,448	563	19,825	9,093	9.61	9,662	1,801	10.24	18.64	95
Almería	3,051	1,551	12,965	14,321	5.93	5,024	1,231	18.83	35.49	186
Valencia/Valencià	2,780	1,056	16,544	10,498	7.05	6,178	1,252	15.09	23.34	248
Huesca	6,253	189	19,902	1,102	3.26	2,045	446	35.06	39.29	171
Sevilla	2,175	737	10,188	3,201	4.60	1,383	591	33.03	37.97	99
Lleida	4,259	248	11,900	1,070	2.88	2,143	426	20.56	25.19	146
Cádiz	2,330	698	4,525	3,305	2.59	2,050	588	13.02	16.06	139
Jaén	2,823	6	6,331	142	2.29	1,807	443	12.40	15.99	153

4. Travellers, overnight stays, capacity, occupancy, total number of staff from tourist areas with greater number of overnight stays

Tourist Areas	Number of travellers		Overnight stays		Average stay	Capacity		Occupancy rate		Employed personnel
	Residents in Spain	Residents abroad	Residents in Spain	Residents abroad		Estimated bedplaces	Estimated holiday dwelling	Per bedplaces	Per holiday dwelling	
	Isla de Gran Canaria	6,658	127,318	35,978		1,391,232	10.65	75,772	24,686	
Isla de Tenerife	7,197	100,989	35,176	906,830	8.71	55,081	17,552	58.49	75.31	4,596
Isla de Lanzarote	13,974	72,809	71,150	650,642	8.32	45,528	14,280	54.28	72.05	3,753
Costa Blanca	5,390	15,829	30,136	216,018	11.60	41,283	8,907	20.56	37.96	978
Isla de Fuerteventura	4,661	21,772	26,312	217,220	9.21	22,596	7,352	37.11	49.04	1,228
Costa del Sol	4,140	20,495	16,921	200,554	8.83	22,154	5,801	33.76	51.33	2,206
Isla de Mallorca	834	5,277	5,485	58,286	10.44	4,925	1,618	44.42	64.96	378
Isla de La Palma	3,652	4,206	11,455	38,111	6.31	4,148	1,436	41.13	59.03	356
Pirineo Catalán	7,739	815	31,851	4,051	4.20	4,215	833	29.16	33.05	267
Isla de la Gomera	616	3,060	4,858	27,065	8.68	3,307	1,106	33.36	49.03	266

5. Travellers, overnight stays, capacity, occupancy, total number of staff from tourist sites with greater number at overnights stays

Tourist sites	Number of travellers		Overnight stays		Average stay	Capacity		Occupancy rate		Employed personnel
	Residents in Spain	Residents abroad	Residents in Spain	Residents abroad		Estimated bedplaces	Estimated holiday dwelling	Per bedplaces	Per holiday dwelling	
	San Bartolomé de Tirajana	4,381	80,791	20,621		912,951	10.96	50,760	16,331	
Mogan	1,339	43,037	8,084	435,117	9.99	22,435	7,294	66.59	82.42	1,514
Tias	3,708	41,919	24,506	371,459	8.68	25,050	7,922	54.07	73.56	1,640
Arona	1,177	43,882	6,973	376,977	8.52	22,562	6,939	58.19	74.39	1,511
Adeje	1,172	31,657	5,023	289,602	8.97	17,225	5,052	58.97	78.62	1,454
Teguise	7,932	19,756	27,425	180,849	7.52	12,155	3,876	58.63	71.72	1,058
Puerto de la Cruz	3,959	10,626	19,891	139,090	10.90	8,084	3,441	66.14	75.32	835
Benidorm	669	10,894	6,908	139,654	12.67	14,457	3,448	34.95	60.71	452
La Oliva	1,872	10,596	10,132	82,601	7.44	7,098	2,125	44.13	60.86	450
Yaiza	2,314	6,814	18,956	65,532	9.26	5,460	1,747	52.81	70.88	651

* Provinces belonging to uniprovincial Autonomous Communities have not been included because they are reflected in previous tables.

6. Percentage distribution of Spanish travellers by Autonomous Community of origin

Origin Destination	Total	Andalucía	Aragón	Asturias (P. de)	Balears (Illes)	Canarias	Cantabria	Castilla y León	Castilla-La Mancha	Cataluña
TOTAL	100.00	22.53	2.69	1.50	1.34	12.97	1.06	2.34	2.13	12.14
Andalucía	100.00	68.95	0.44	0.94	0.39	0.62	1.19	0.66	1.49	3.24
Aragón	100.00	1.71	18.33	1.72	2.01	0.77	1.29	2.22	3.52	13.04
Asturias (P. de)	100.00	1.60	-	33.29	0.46	2.61	4.46	9.65	0.46	2.70
Balears (Illes)	100.00	32.10	3.05	-	15.33	1.72	-	0.19	1.14	32.76
Canarias	100.00	12.13	1.77	0.52	1.39	39.55	0.27	1.18	0.88	2.49
Cantabria	100.00	6.64	2.34	5.76	-	1.67	21.28	10.22	2.45	1.20
Castilla y León	100.00	7.35	0.18	3.80	-	-	-	7.17	1.11	-
Castilla-La Mancha	100.00	3.56	1.57	0.34	-	0.16	0.18	2.38	18.86	2.55
Cataluña	100.00	2.09	1.41	0.47	2.69	1.32	0.38	2.23	0.85	70.51
Comunitat Valenciana	100.00	9.51	1.28	0.38	0.52	1.51	0.11	2.93	3.54	9.08
Extremadura	100.00	13.55	-	0.38	-	-	-	4.20	2.82	-
Galicia	100.00	2.69	0.72	3.96	-	-	1.16	3.77	1.67	6.01
Madrid (C. de)	100.00	18.04	3.38	3.40	1.58	4.52	2.01	5.69	2.73	12.44
Murcia (Región de)	100.00	14.54	3.55	2.93	1.04	0.14	-	0.72	4.87	4.42
Navarra (C. Foral de)	100.00	15.76	4.60	3.31	0.81	2.37	0.40	6.46	0.83	7.10
País Vasco	100.00	2.02	0.30	2.00	5.34	1.19	1.74	2.59	5.70	12.94
Rioja (La)	100.00	1.71	4.87	3.44	2.14	-	1.38	5.05	3.87	0.92
Ceuta y Melilla	-	-	-	-	-	-	-	-	-	-

(conclusión)

Origin Destination	Comunitat Valenciana	Extrema- dura	Galicia	Madrid (C. de)	Murcia (Región de)	Navarra (C. Foral de)	País Vasco	Rioja (La)	Ceuta y Melilla
TOTAL	9.38	1.24	3.18	18.52	2.08	1.04	4.49	1.02	0.36
Andalucía	6.22	0.80	0.88	8.03	3.37	0.23	0.86	1.44	0.24
Aragón	14.22	0.15	1.17	22.13	0.84	2.14	12.98	1.75	-
Asturias (P. de)	0.23	0.92	10.63	14.69	-	-	18.07	0.23	-
Balears (Illes)	3.68	-	2.23	7.79	-	-	-	-	-
Canarias	2.27	0.23	1.68	29.57	0.05	0.94	3.61	0.88	0.58
Cantabria	0.81	0.00	4.95	10.32	0.58	2.69	27.77	1.30	-
Castilla y León	0.54	4.71	37.94	34.06	1.27	0.39	1.48	-	-
Castilla-La Mancha	12.25	0.40	4.14	51.18	1.20	-	1.14	0.08	-
Cataluña	2.79	0.50	0.67	9.88	0.36	0.50	2.72	0.62	0.02
Comunitat Valenciana	50.55	0.16	0.86	14.29	2.77	0.57	1.16	0.72	0.08
Extremadura	-	52.88	0.19	25.98	-	-	-	-	-
Galicia	1.06	0.86	57.81	18.15	0.10	0.44	1.27	0.33	-
Madrid (C. de)	9.74	3.09	5.02	14.45	4.24	1.84	5.91	0.86	1.04
Murcia (Región de)	17.70	1.98	2.60	11.95	30.58	0.00	2.75	0.23	-
Navarra (C. Foral de)	3.23	1.77	9.99	10.45	1.98	15.29	13.59	2.08	-
País Vasco	3.13	-	5.10	8.33	0.59	2.00	45.37	1.66	-
Rioja (La)	0.00	-	4.36	20.75	-	1.84	42.98	6.70	-
Ceuta y Melilla	-	-	-	-	-	-	-	-	-

7. Percentage distribution of overnight stays by Autonomous Community of origin

Origin Destination	Total	Andalucía	Aragón	Asturias (P. de)	Balears (Illes)	Canarias	Cantabria	Castilla y León	Castilla-La Mancha	Cataluña
TOTAL	100.00	16.81	2.49	2.29	1.58	14.25	1.67	2.01	2.19	18.74
Andalucía	100.00	62.25	0.28	3.54	0.20	0.96	3.14	0.60	1.30	3.87
Aragón	100.00	2.84	19.13	1.98	3.28	0.80	1.36	2.41	4.53	11.84
Asturias (P. de)	100.00	1.17	-	40.59	0.29	1.81	2.41	5.39	0.29	8.43
Balears (Illes)	100.00	35.03	1.03	-	10.49	1.51	-	0.58	0.89	42.31
Canarias	100.00	12.20	2.74	0.55	1.21	39.41	0.44	0.69	0.81	2.21
Cantabria	100.00	2.70	1.00	3.20	0.03	2.10	45.73	8.45	1.64	3.54
Castilla y León	100.00	5.29	0.66	7.09	0.57	-	0.62	19.45	0.42	-
Castilla-La Mancha	100.00	3.97	0.71	0.20	-	0.13	0.07	5.39	31.95	1.77
Cataluña	100.00	2.48	0.54	0.36	3.53	0.97	0.54	0.79	0.78	77.03
Comunitat Valenciana	100.00	7.60	1.87	1.00	0.33	2.04	0.83	4.29	4.98	9.48
Extremadura	100.00	17.17	-	2.03	-	-	-	6.11	2.25	-
Galicia	100.00	2.08	0.53	6.15	-	-	0.51	2.05	1.89	4.84
Madrid (C. de)	100.00	17.00	3.95	3.73	1.77	5.24	2.41	5.71	3.33	12.91
Murcia (Región de)	100.00	11.91	0.53	26.99	0.99	0.04	-	0.58	2.66	2.69
Navarra (C. Foral de)	100.00	18.59	4.58	1.46	1.20	7.31	0.56	4.57	0.59	9.40
País Vasco	100.00	4.11	0.20	2.02	4.77	0.80	1.16	3.03	10.37	11.26
Rioja (La)	100.00	2.65	4.15	5.97	1.83	-	1.17	5.67	4.77	1.68
Ceuta y Melilla	-	-	-	-	-	-	-	-	-	-

(conclusión)

Origin Destination	Comunitat Valenciana	Extrema- dura	Galicia	Madrid (C. de)	Murcia (Región de)	Navarra (C. Foral de)	País Vasco	Rioja (La)	Ceuta y Melilla
TOTAL	9.51	0.71	2.59	17.75	1.85	0.93	3.65	0.78	0.21
Andalucía	8.04	0.56	0.62	9.19	2.01	0.18	2.00	1.01	0.24
Aragón	11.19	0.05	1.26	25.36	0.59	2.44	9.52	1.41	-
Asturias (P. de)	1.17	0.29	11.52	11.03	-	-	15.37	0.22	-
Balears (Illes)	1.98	-	2.28	3.90	-	-	-	-	-
Canarias	2.97	0.16	1.31	30.82	0.02	0.42	3.22	0.50	0.32
Cantabria	0.94	0.63	2.45	7.09	0.38	1.78	16.82	1.52	-
Castilla y León	0.37	3.42	43.56	15.74	0.37	0.18	2.27	-	-
Castilla-La Mancha	12.16	0.62	6.14	33.96	1.06	-	1.85	0.03	-
Cataluña	3.67	0.15	0.84	5.11	0.26	0.34	1.88	0.73	0.03
Comunitat Valenciana	43.06	0.21	1.14	13.84	3.15	2.64	2.59	0.88	0.08
Extremadura	-	50.07	0.18	22.18	-	-	-	-	-
Galicia	0.96	1.78	63.95	12.26	0.03	0.28	2.27	0.42	-
Madrid (C. de)	7.78	3.36	4.96	15.15	4.06	1.84	5.30	0.84	0.67
Murcia (Región de)	8.68	0.33	0.70	10.54	31.74	0.23	0.94	0.45	-
Navarra (C. Foral de)	2.86	1.38	8.41	8.21	2.83	11.96	13.43	2.64	-
País Vasco	3.98	-	4.92	10.80	0.13	0.89	40.81	0.74	-
Rioja (La)	0.55	-	2.15	20.43	5.48	0.98	30.96	11.58	-
Ceuta y Melilla	-	-	-	-	-	-	-	-	-

Provisional data

8. Travellers and overnight stays by countries of residence

Countries	Travellers		Overnight stays	
	Total	%	Total	%
TOTAL	518,787	100.00	4,431,346	100.00
Residents in Spain	123,284	23.76	557,844	12.59
Residents abroad	395,502	76.24	3,873,502	87.41
Total residents abroad	395,502	100.00	3,873,502	100.00
Total residents in E.U (excluding Spain)	339,688	85.89	3,300,601	85.21
-Germany	58,009	14.67	755,447	19.50
-Austria	2,545	0.64	28,665	0.74
-Belgium	3,162	0.80	35,347	0.91
-Denmark	25,130	6.35	229,898	5.94
-Finland	23,837	6.03	217,442	5.61
-France	6,851	1.73	55,611	1.44
-Greece	1,466	0.37	12,862	0.33
-Ireland	11,545	2.92	97,959	2.53
-Italy	4,944	1.25	34,640	0.89
-Luxembourg	424	0.11	4,822	0.12
-Netherlands	18,505	4.68	219,844	5.68
-Poland	1,519	0.38	18,528	0.48
-Portugal	4,568	1.16	31,563	0.81
-United Kingdom	132,301	33.45	1,116,402	28.82
-Czech Republic	994	0.25	8,600	0.22
-Sweden	39,178	9.91	370,967	9.58
-Other EU countries	4,709	1.19	62,004	1.60
Norway	33,964	8.59	378,779	9.78
Other european countries	9,537	2.41	96,150	2.48
United States of America	5,392	1.36	40,649	1.05
Rest of America	3,619	0.92	32,898	0.85
African countries	564	0.14	4,557	0.12
Other countries	2,739	0.69	19,868	0.51

Tourist accommodation occupancy survey:

(Rural tourist accommodation)

February 2008

Provisional data

1. Number of travellers, overnight stays and average stay

Autonomous Communities	Number of travellers			Number of overnight stays			Average stay
	Total	Residents In Spain	Residents abroad	Total	Residents In Spain	Residents abroad	
TOTAL	156,137	146,104	10,033	351,634	289,953	61,681	2.25
Andalucía	10,332	9,510	823	26,457	21,800	4,657	2.56
Aragón ²	8,474	8,265	209	24,927	21,066	3,860	2.94
Asturias (Principado de)	4,855	4,681	175	10,793	10,333	460	2.22
Balears (Illes)	3,144	735	2,409	10,900	1,209	9,691	3.47
Canarias	4,411	1,052	3,359	34,938	4,918	30,020	7.92
Cantabria	8,101	7,895	206	13,751	13,015	736	1.70
Castilla y León	37,957	36,808	1,149	74,197	71,403	2,794	1.95
Castilla-La Mancha	9,503	9,450	53	18,429	18,349	80	1.94
Cataluña	22,579	21,939	640	45,691	43,295	2,397	2.02
Comunitat Valenciana	5,858	5,675	183	14,354	12,218	2,136	2.45
Extremadura	7,515	7,362	153	12,477	11,926	551	1.66
Galicia ¹	6,781	6,659	121	11,429	11,064	365	1.69
Madrid (C. de)	9,528	9,378	150	15,883	15,627	256	1.67
Murcia (Región de)	2,721	2,679	42	5,469	5,347	122	2.01
Navarra (C. Foral de)	6,554	6,554	-	14,334	14,334	-	2.19
País Vasco	6,222	5,859	362	14,798	11,242	3,556	2.38
Rioja (La)	1,603	1,603	-	2,807	2,807	-	1.75
Ceuta y Melilla	-	-	-	-	-	-	-
Interannual rate	12.01	13.15	-2.18	7.74	8.17	5.75	-3.82
Cumulative interannual rate	8.13	8.31	5.71	6.55	6.35	7.50	-1.47

2. Open rural tourist accommodation and estimated vacancies, levels of occupancy and personnel employed by Autonomous Communities

Autonomous Communities	Nº of rural open estimated accom.	Nº of vacancies	Level of occupancy			Employed personnel
			By vacancies	By vacancies at week end	By rooms	
TOTAL	11,651	100,610	8.61	15.52	11.32	18,796
Andalucía	1,070	8,521	5.85	9.87	8.15	1,940
Aragón ²	901	6,782	10.30	16.52	11.67	1,055
Asturias (Principado de)	1,026	8,297	2.95	3.72	4.84	1,555
Balears (Illes)	64	957	10.26	13.10	12.57	213
Canarias	760	4,058	26.75	29.13	40.32	1,129
Cantabria	304	5,087	6.04	13.73	7.59	489
Castilla y León	2,305	19,588	8.22	16.33	11.34	4,310
Castilla-La Mancha	898	6,904	7.10	14.51	8.55	1,503
Cataluña	1,417	11,145	11.06	25.50	14.84	2,145
Comunitat Valenciana	868	7,868	5.24	8.89	7.97	1,267
Extremadura	377	4,167	6.32	11.07	7.37	642
Galicia ¹	405	4,743	5.26	11.02	5.84	673
Madrid (C. de)	178	2,969	14.03	27.12	20.27	459
Murcia (Región de)	253	2,746	8.61	13.85	10.41	422
Navarra (C. Foral de)	472	3,229	10.54	20.85	10.85	513
País Vasco	279	2,850	13.74	21.32	16.87	391
Rioja (La)	74	700	12.35	19.73	12.99	92
Ceuta y Melilla	-	-	-	-	-	-
Interannual rate	7.92	8.02	-3.72	-3.94	3.48	3.60
Cumulative interannual rate	8.56	8.42	-3.63	-1.76	3.39	7.68

¹ Information provided about the total number of travellers and overnight stays in the whole month.

² Due to the updating in the directory of establishments carried out in the province of Teruel and Zaragoza, the data to be published from January 2008 (Teruel, Zaragoza, Aragón and the national total) are not directly comparable with the data published last year, therefore, data link coefficients have been calculated to allow the comparison of data between different years. These coefficients are available in the information service of INE. (www.ine.es/infoine, tfno: 91 583 91 00).

3. Number of travellers, overnight stays and average stay of provinces with the greatest number of overnight stays³

Provinces	Number of travellers			Number of overnight stays			Average stay
	Total	Residents In Spain	Residents abroad	Total	Residents In Spain	Residents abroad	
St. Cruz de Tenerife	3,340	779	2,561	27,564	3,189	24,375	8.25
Ávila	9,657	9,549	108	19,375	19,267	108	2.01
Huesca	5,129	4,956	173	16,330	13,817	2,512	3.18
Girona	7,122	6,736	386	15,481	14,178	1,303	2.17
Lleida	7,523	7,433	90	15,323	14,632	691	2.04
Segovia	7,170	7,092	78	12,817	12,674	143	1.79
Cáceres	7,154	7,014	141	11,673	11,172	501	1.63
Barcelona	5,976	5,836	139	11,081	10,811	270	1.85
Salamanca	5,277	4,938	340	9,984	9,188	797	1.89
León	4,357	4,157	200	9,166	8,675	491	2.10
Guipúzcoa	3,179	2,959	220	7,834	5,738	2,095	2.46
Las Palmas	1,071	273	798	7,374	1,729	5,645	6.89
Málaga	2,354	2,135	218	7,190	6,017	1,173	3.05
Albacete	2,945	2,945	-	5,611	5,611	-	1.91
Burgos	2,589	2,424	164	5,509	5,000	509	2.13

4. Open rural tourist accommodation and estimated vacancies degrees of occupancy and personnel employed in provinces with the highest number of overnight stays³

Provinces	Nº of rural open estimated accommodation	Nº of vacancies	Level of occupancy			Employed personnel
			By vacancies	By vacancies at the weekend	By rooms	
St. Cruz de Tenerife	636	3,131	30.35	30.92	51.52	860
Ávila	581	4,348	15.31	42.45	17.39	1,006
Huesca	524	3,835	14.62	26.02	18.34	595
Girona	474	3,742	14.13	36.99	15.98	738
Lleida	514	3,615	14.53	36.79	16.19	757
Segovia	241	2,367	18.59	41.20	30.83	456
Cáceres	355	4,190	9.60	23.00	12.80	575
Barcelona	289	2,582	14.76	44.10	16.02	455
Salamanca	380	2,909	11.80	24.09	15.53	497
León	324	2,903	10.81	19.69	11.71	574
Guipúzcoa	128	1,373	19.61	38.50	22.32	186
Las Palmas	126	939	26.81	27.24	47.04	215
Málaga	449	3,024	8.19	14.29	12.29	795
Albacete	403	2,337	8.27	25.10	8.77	733
Burgos	208	2,150	8.82	19.11	11.31	267

³ Provinces belonging to uniprovincial Autonomous Communities have not been included because they are reflected in previous tables.

5. Number of travellers, overnight stays, average stay, estimated vacancies, levels of occupancy and personnel employed in areas with the highest number of overnight stays

Areas	Number of travellers		Number of overnight stays		Average stay	Capacity		Level of occupancy		
	Residents In Spain	Residents abroad	Residents In Spain	Residents abroad		Nº of rural open esti- mated accom.	Nº of vacancies	By vacancies	By vacancies at week end	By rooms
Pirineo Catalán	12,122	274	23,913	993	2.01	715	5,399	15.79	42.69	17.25
Isla de La Palma	74	1,045	1,103	13,789	13.31	381	1,594	32.22	31.84	58.67
Pirineo Aragonés	4,702	142	11,889	2,523	2.97	489	3,594	13.76	27.44	16.27
Pirineo Navarro	6,034	-	13,267	-	2.20	470	3,157	14.37	33.20	15.13
Isla de Mallorca	700	2,400	1,148	9,639	3.48	95	1,636	22.74	24.42	27.25
Isla de Tenerife	505	1,086	1,135	7,419	5.38	98	855	34.50	36.51	49.76
P.Nacional Taburiente	74	544	396	7,393	12.60	224	925	29.03	28.71	45.38
Costa Brava	2,946	205	6,334	581	2.19	280	2,176	10.90	28.69	12.45
P.Nacional Teide	363	788	583	5,540	5.32	66	597	35.37	39.14	55.50
Isla de Gran Canaria	210	621	1,390	4,146	6.66	102	649	29.20	29.44	52.56
Pirineo Vasco	1,903	178	3,752	1,713	2.63	105	1,034	18.16	36.82	19.91
P.Nacional Picos de Europa	1,936	130	3,845	251	1.98	186	1,786	7.90	18.92	10.69
Costa Daurada	1,933	25	3,674	133	1.94	164	1,400	9.37	19.20	11.07
Isla de La Gomera	126	375	658	2,928	7.15	99	463	26.69	27.54	43.69
Costa Verde	2,004	63	3,129	126	1.57	338	3,018	3.72	8.98	4.59

6. Number of travellers, overnight stays, average stay, estimated vacancies, levels of occupancy and personnel employed class per rural house per Autonomous Community⁴

Autonomous Communities	Number of travellers		Number of overnight stays		Average stay	Capacity		Level of occupancy		Employed personnel
	Residents In Spain	Residents abroad	Residents In Spain	Residents abroad		Nº of rural open esti- mated accom.	Nº of vacancies	By vacancies	By vacancies at week end	
TOTAL	96,126	5,030	204,912	39,224	2.41	9,973	73,523	11.41	24.79	13,902
Andalucía	8,544	790	19,961	4,541	2.63	1,049	8,212	10.26	19.97	1,831
Aragón	6,073	201	15,807	2,040	2.84	632	4,747	12.88	23.26	603
Asturias (Principado de)	2,003	63	5,652	126	2.80	773	4,607	4.32	8.16	865
Balears (Illes)	329	689	622	2,829	3.39	24	348	34.16	37.20	76
Canarias	480	2,059	3,952	22,771	10.53	738	3,466	26.59	26.16	970
Cantabria	1,746	19	3,345	37	1.92	109	1,624	7.18	18.79	150
Castilla y León	22,920	205	47,047	659	2.06	1,975	12,976	12.64	31.13	2,680
Castilla-La Mancha ⁵	-	-	-	-	-	-	-	-	-	1,469
Cataluña	18,590	453	37,933	1,851	2.09	1,307	9,671	14.10	36.91	1,931
Comunitat Valenciana	4,251	149	9,943	2,043	2.72	844	6,263	6.60	13.04	1,129
Extremadura	3,722	115	6,684	382	1.84	281	2,521	9.65	21.17	358
Galicia	4,515	14	7,423	106	1.66	312	3,586	7.22	19.69	510
Madrid (C. de)	600	34	1,255	85	2.11	36	267	17.20	29.89	61
Murcia (Región de) ⁵	-	-	-	-	-	-	-	-	-	411
Navarra (C. Foral de)	6,554	-	14,334	-	2.19	507	3,445	14.23	33.70	536
País Vasco	2,659	157	5,396	1,584	2.48	160	1,555	15.44	28.02	233
Rioja (La)	1,603	-	2,807	-	1.75	77	719	13.41	39.29	90

⁴ To facilitate the comparability between data from different Autonomous Communities (and because of the different regulation and different characteristics), a group called rural house has been created, with those accommodations with similar typology (location, capacity, etc...). The variables included in the previous table have been estimated with that type of establishments.

The variables shown in the table have been estimated with the type of accommodation under rural tourist accommodation.

⁵ The size of the sample in these communities does not facilitate the INE the broken down results, with the objective of maintaining statistical secrecy. Nevertheless, the data corresponding to these communities are included in the total.

7. Percentage distribution of Spanish travellers by Autonomous Community of origin

Origin Destination	Total	Andalucía	Aragón	Asturias (P. de)	Balears (Illes)	Canarias	Cantabria	Castilla y León	Castilla-La Mancha	Cataluña
TOTAL	100.00	8.78	2.88	2.58	0.45	0.96	1.53	6.12	4.48	16.63
Andalucía	100.00	87.98	-	0.18	0.10	-	0.05	0.09	2.17	0.49
Aragón	100.00	1.96	38.24	0.78	-	-	-	0.97	1.19	13.92
Asturias (P. de)	100.00	4.66	-	40.54	-	0.20	5.58	7.94	0.30	0.20
Balears (Illes)	100.00	-	-	-	68.45	-	-	-	3.74	11.45
Canarias	100.00	4.94	0.51	0.79	-	80.03	-	-	-	0.95
Cantabria	100.00	2.22	1.20	5.23	0.10	0.56	17.42	3.78	3.36	3.81
Castilla y León	100.00	2.50	0.60	2.28	0.20	0.70	1.31	19.57	3.79	1.68
Castilla-La Mancha	100.00	11.74	0.24	0.13	0.09	0.10	0.07	1.87	21.94	0.73
Cataluña	100.00	-	0.22	0.91	-	-	-	0.14	3.09	93.34
Comunitat Valenciana	100.00	-	0.40	-	-	-	-	-	0.47	5.98
Extremadura	100.00	16.32	0.17	-	-	1.10	0.11	3.51	6.12	0.56
Galicia	100.00	1.99	-	2.57	0.25	0.74	0.11	2.14	0.47	3.56
Madrid (C. de)	100.00	2.80	0.44	0.07	0.21	0.51	0.51	0.66	6.08	1.38
Murcia (Región de)	100.00	2.50	0.15	-	-	-	-	-	16.56	0.31
Navarra (C. Foral de)	100.00	-	3.87	-	-	-	-	-	3.23	-
País Vasco	100.00	1.23	5.33	2.42	0.22	1.12	0.79	3.25	0.24	12.68
Rioja (La)	100.00	5.53	0.79	-	-	-	-	7.51	2.77	2.37
Ceuta y Melilla	-	-	-	-	-	-	-	-	-	-

Origin Destination	Comunidad Valenciana	Extrema- dura	Galicia	Madrid (C. de)	Murcia (Región)	Navarra (C. Foral)	País Vasco	Rioja (La)	Ceuta y Melilla	(conclusion)
TOTAL	6.18	2.95	5.74	27.04	2.28	3.27	6.81	1.29	0.02	
Andalucía	1.99	0.13	-	3.96	2.78	0.09	-	-	-	
Aragón	17.93	0.17	-	11.09	1.30	5.75	5.03	1.68	-	
Asturias (P. de)	0.68	0.68	12.65	11.27	1.61	0.20	11.91	1.58	-	
Balears (Illes)	1.79	-	1.79	12.77	-	-	-	-	-	
Canarias	2.02	-	-	10.77	-	-	-	-	-	
Cantabria	0.12	0.12	4.21	18.80	0.10	2.49	35.07	1.39	-	
Castilla y León	0.97	4.48	5.65	52.54	0.25	0.72	2.60	0.13	0.05	
Castilla- La Mancha	11.27	1.65	1.56	38.71	9.61	-	-	0.28	-	
Cataluña	0.79	0.02	-	0.81	-	0.02	0.66	-	-	
Comunitat Valenciana	85.88	-	1.21	1.62	2.34	0.24	0.24	1.61	-	
Extremadura	0.46	31.99	0.34	38.64	-	0.06	0.62	-	-	
Galicia	0.45	0.41	74.58	11.66	-	0.31	0.78	-	-	
Madrid (C. de)	1.30	0.30	0.97	83.04	0.43	-	0.73	0.43	0.14	
Murcia (Región de)	18.86	-	-	0.77	60.84	-	-	-	-	
Navarra (C. Foral de)	-	-	-	1.29	-	51.94	24.19	15.48	-	
País Vasco	2.06	0.35	1.14	9.28	1.32	4.10	52.05	2.41	-	
Rioja (La)	-	-	-	41.90	-	8.30	18.18	12.65	-	
Ceuta y Melilla	-	-	-	-	-	-	-	-	-	

8. Percentage distribution of overnight stays by Spaniards by Autonomous Community of origin

Origin \ Destination	Total	Andalucía	Aragón	Asturias (P. de)	Balears (Illes)	Canarias	Cantabria	Castilla y León	Castilla-La Mancha	Cataluña
TOTAL	100.00	9.76	3.14	2.41	0.35	1.95	1.31	6.51	4.25	16.76
Andalucía	100.00	81.97	-	0.08	0.04	-	0.15	0.08	3.21	0.44
Aragón	100.00	2.94	34.45	0.31	-	-	-	0.46	2.25	15.98
Asturias (P. de)	100.00	8.35	-	30.94	-	0.09	4.54	6.57	0.14	0.54
Balears (Illes)	100.00	-	-	-	53.84	-	-	-	5.22	16.03
Canarias	100.00	2.28	0.22	1.01	-	84.45	-	-	-	1.42
Cantabria	100.00	1.88	1.94	4.39	0.13	0.34	14.88	4.56	5.43	5.11
Castilla y León	100.00	3.09	0.40	2.68	0.27	1.21	1.54	21.79	3.51	1.41
Castilla-La Mancha	100.00	12.19	0.24	0.31	0.09	0.05	0.04	2.20	20.08	0.66
Cataluña	100.00	-	0.11	0.92	-	-	-	0.14	2.41	92.25
Comunitat Valenciana	100.00	2.31	0.19	-	-	-	-	-	1.05	6.00
Extremadura	100.00	19.63	0.11	-	-	0.68	0.28	3.74	5.70	0.76
Galicia	100.00	5.23	-	2.97	0.15	1.08	0.15	2.23	0.51	4.94
Madrid (C. de)	100.00	2.74	0.48	0.13	0.54	1.09	0.48	0.57	6.36	1.96
Murcia (Región de)	100.00	2.35	0.08	-	-	-	-	-	9.41	0.15
Navarra (C. Foral de)	100.00	-	3.54	-	-	-	-	-	4.42	-
País Vasco	100.00	2.80	5.13	3.18	0.23	1.75	0.96	3.87	0.41	10.68
Rioja (La)	100.00	3.16	0.45	-	-	-	0.45	9.26	3.16	6.32
Ceuta y Melilla	-	-	-	-	-	-	-	-	-	-

(conclusion)

Origin \ Destination	Comunidad Valenciana	Extremadura	Galicia	Madrid (C. de)	Murcia (Región)	Navarra (C. Foral)	País Vasco	Rioja (La)	Ceuta y Melilla
TOTAL	6.65	2.57	6.04	24.52	2.70	4.11	5.81	1.11	0.07
Andalucía	6.26	0.06	-	5.60	2.08	0.04	-	-	-
Aragón	16.34	0.13	2.71	8.98	1.68	8.83	3.77	1.15	-
Asturias (P. de)	0.62	0.93	23.84	10.00	4.38	0.09	7.86	1.12	-
Balears (Illes)	2.54	-	5.44	16.93	-	-	-	-	-
Canarias	0.43	-	-	6.59	-	-	3.60	-	-
Cantabria	0.07	0.07	4.66	18.61	0.13	2.40	34.50	0.91	-
Castilla y León	1.02	4.44	6.51	48.58	0.31	0.81	2.28	0.09	0.05
Castilla- La Mancha	11.98	2.58	2.75	37.10	9.52	-	-	0.22	-
Cataluña	1.19	0.01	-	1.94	-	0.01	1.01	-	-
Comunitat Valenciana	76.51	-	5.85	2.95	3.62	0.22	0.55	0.75	-
Extremadura	1.68	28.79	0.21	37.88	-	0.03	0.52	-	-
Galicia	0.33	0.40	67.82	12.65	-	0.72	0.81	-	-
Madrid (C. de)	1.44	0.18	1.01	81.38	0.26	-	0.52	0.78	0.09
Murcia (Región de)	13.71	-	-	0.62	73.69	-	-	-	-
Navarra (C. Foral de)	-	1.03	-	4.13	-	57.82	16.67	12.39	-
País Vasco	3.13	0.18	2.08	9.23	1.38	4.95	47.19	1.55	1.29
Rioja (La)	-	-	-	35.44	-	6.55	18.06	17.16	-
Ceuta y Melilla	-	-	-	-	-	-	-	-	-

9. Travellers and overnight stays by country of residence

Results by countries Countries	Travellers		Overnight stays	
	Total	%	Total	%
TOTAL	156,137	100.00	351,634	100.00
Residents Spain	146,104	93.57	289,953	82.46
Residents abroad	10,033	6.43	61,681	17.54
Total Residents abroad	10,033	100.00	61,681	100.00
Total Residents in UE (excluding Spain)	9,316	92.86	57,226	92.78
- Germany	4,222	42.08	32,046	51.95
- Belgium	194	1.94	497	0.81
- France	1,308	13.04	3,764	6.10
- Italy	103	1.03	1,000	1.62
- Netherlands	551	5.49	3,241	5.25
- Portugal	783	7.81	3,847	6.24
- United Kingdom	1,481	14.76	6,320	10.25
Sweden	89	0.88	812	1.32
Other European countries	863	8.60	7,616	12.35
United States of America	205	2.04	650	1.05
Other countries	233	2.32	1,888	3.06

Tourist Campsite Price Index (TCSPI)

February 2008

Provisional data

National general index and breakdown by rates

	Index	Interannual variation rate
TOTAL	134.65	5.06
Normal rate	133.62	4.34
Special rate for stays up to one month	130.51	1.88
Special rate for stays longer than one month	133.53	6.84

National general index and breakdown by categories

	Index	Interannual variation rate
TOTAL	134.65	5.06
Luxury and first	138.37	5.83
Second	133.01	4.66
Third	130.83	5.20

HOLIDAY DWELLING PRICE INDEX (HDPI)

February 2008

Provisional data

National general index and breakdown by rates

	Index	Interannual variation rate
TOTAL	106.71	2.91
Normal	110.12	3.05
Weekend	121.72	8.02
Tour-operators and travel agencies	104.85	2.58

National general index and breakdown by modalities

	Index	Interannual variation rate
TOTAL	106.71	2.91
Studio	112.87	5.59
Dwellings 2/4 bedplaces	104.61	2.08
Dwellings 4/6 bedplaces	110.55	3.32

Rural Tourism Accommodation Price Index (RTAPI)

February 2008

Provisional data

National general index and breakdown by rates

	Index	Variation Rate interannual
TOTAL	126.94	2.90
Normal	122.77	2.42
Weekend	125.26	3.17

National general index and breakdown by rent modality

	Index	Variation Rate interannual
TOTAL	126.94	2.90
Shared use (in case of per room rent modality)	116.48	3.08
Full use (rent of entire dwelling)	132.55	2.82