

01 April 2019

Non-hotel Tourist Accommodation Occupancy Survey
February 2019. Provisional data

**Overnight stays in non-hotel tourist accommodation decrease 2.4%
in February, as compared to the same month of 2018**

Overnight stays in non-hotel tourist accommodation (apartments, tourist campsites, rural tourism accommodation and hostels) exceeded 5.6 million in February, 2.4% less than in the same month of 2018. Resident overnight stays increased 2.9% while non-resident overnight stays decreased 3.9%.

The average stay stood at 5.3 overnight stays per traveller.

During the first two months of 2019, overnight stays decreased by 3.0% as compared to the same period of the previous year.

Travellers and overnight stays in collective non-hotel tourist accommodation during the month of February were:

February 2019	Arrivals	Overnight stays
Residents	519,729	1,335,540
EU Residents (excluding Spain)	437,999	3,656,685
Rest of the world	100,957	643,991
TOTAL	1,058,685	5,636,216

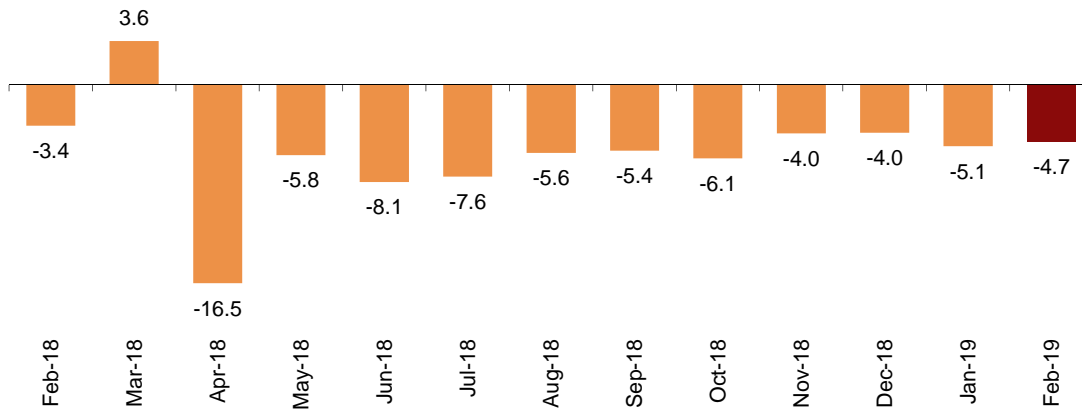
Holiday Dwellings

Overnight stays in holiday dwellings decreased by 4.7% in February. Resident overnight stays decreased by 3.0% and non-resident overnight stays did so by 5.1%.

The average stay decreased by 5.0% as compared to February 2018, standing at 6.1 overnight stays per traveller.

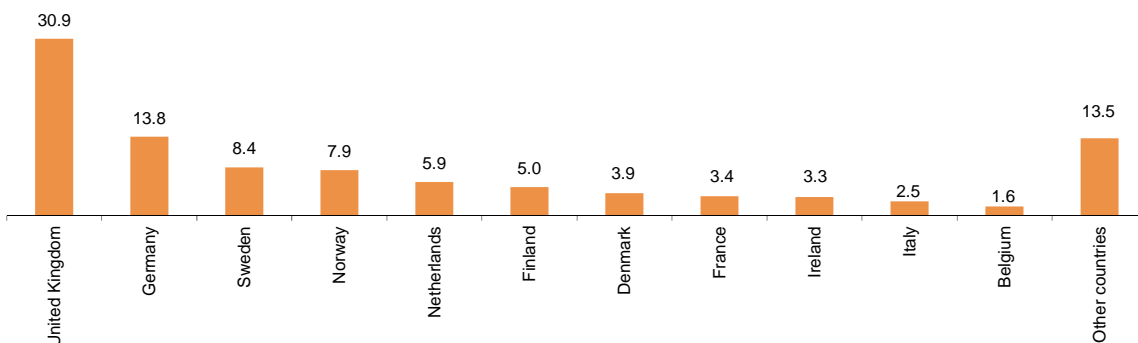
In February, 34.2% of the bed-places offered by holiday dwellings were occupied, 3.5% less than in the same month of 2018. The weekend occupancy rate by bed-places stood at 36.9%, with a decrease of 3.0%.

Annual variation rate for overnight stay
Percentage



Non-resident overnight stays in holiday dwellings represented 83.9% of the total. The United Kingdom was the main country of origin, with more than one million overnight stays, 1.1% more than in February 2018. The following country of origin was Germany, with 449,865 overnight stays, 13.7% less.

Distribution of non-residents overnight stays. Main country of residence
Percentage



Canarias was the preferred holiday dwelling destination, with 2.4 million overnight stays and a decrease of 6.7% as compared with February 2018. These islands also reached the highest occupancy rate, with 82.7% of holiday dwellings offered.

By tourist areas, the island of Gran Canaria was the preferred destination, with 823,662 overnight stays and an occupancy rate of 85.7% of holiday dwellings offered.

The tourist sites with the highest number of overnight stays in February were San Bartolomé de Tirajana, Arona and Mogán.

Tourist Campsites

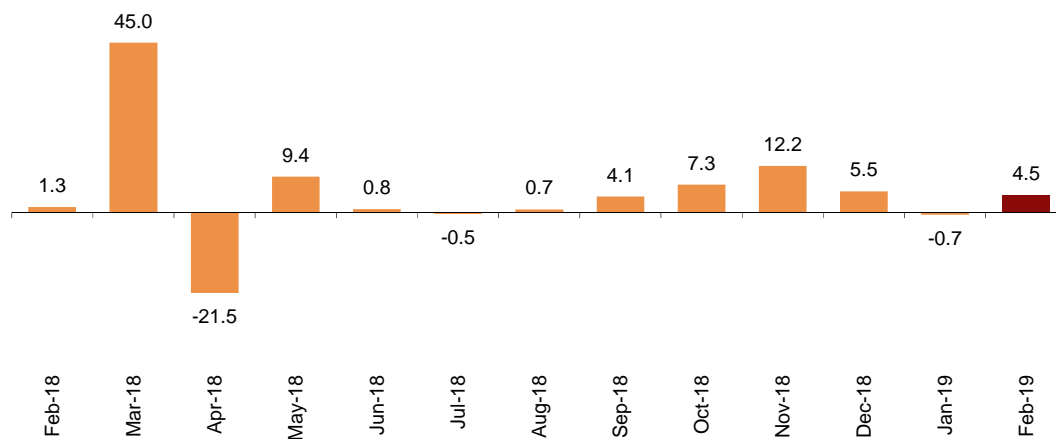
Overnight stays at tourist campsites registered in February an increase of 4.5% as compared with the same month of the previous year. Resident overnight stays grew by 21.2%, and those of non-residents by 0.3%.

During the month of February, 39.7% of the offered pitches were occupied, 0.2% less than in the same month of 2018. The weekend occupancy rate by pitch reached 40.5%, with an annual decrease of 0.7%.

76.4% of overnight stays on tourist campsites were made by non-residents. The United Kingdom was the main country of origin with 35.0% of overnight stays by non-residents, 2.4% more than in February 2018.

Annual variation rate for overnight stays

Percentage



Comunitat Valenciana was the preferred destination for tourist campsites, with 601,991 overnight stays, representing an annual increase of 5.9%. This Autonomous Community also reached the highest occupancy rate, with 64.7% of the pitches offered.

By tourist areas, Costa Blanca was the preferred destination, with 314,451 overnight stays and an occupancy rate of 86.7% of the pitches offered.

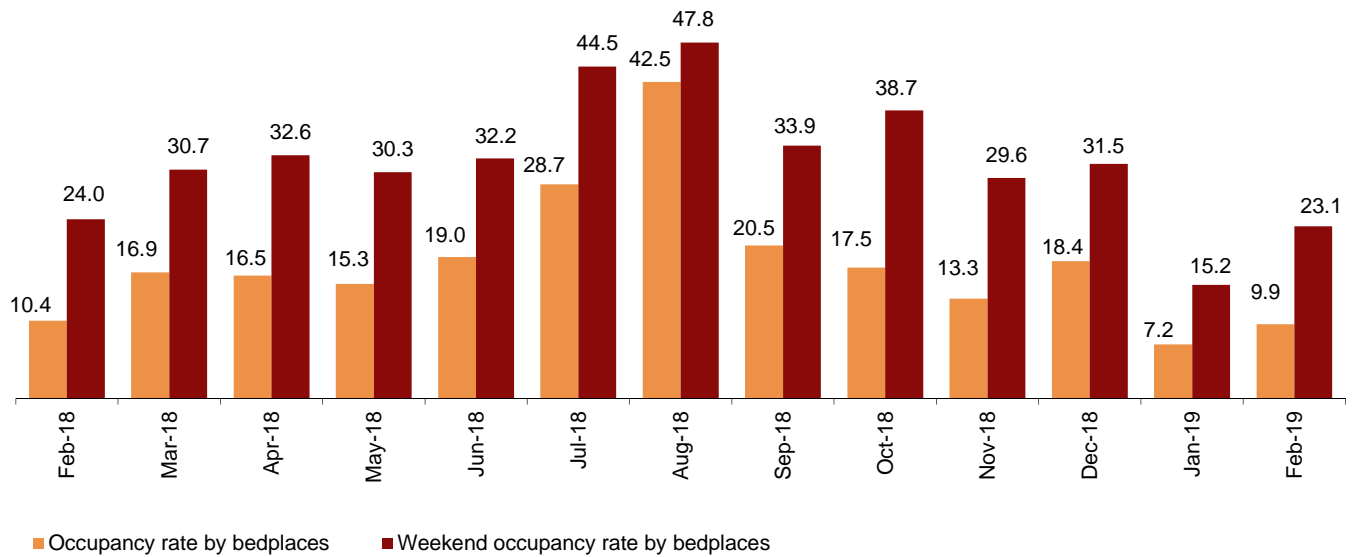
The tourist sites with the most overnight stays were Benidorm, Cartagena and Oliva.

Rural tourism accommodation

Overnight stays in rural tourism accommodation presented an annual decrease of 3.5% in February. Resident overnight stays decreased by 0.7% and non-resident overnight stays did so by 12.9%.

In rural tourism accommodation, 9.9% of the bed-places were occupied, 4.4% less than in February 2018. The weekend occupancy rate stood at 23.1%, with an annual decrease of 3.8%.

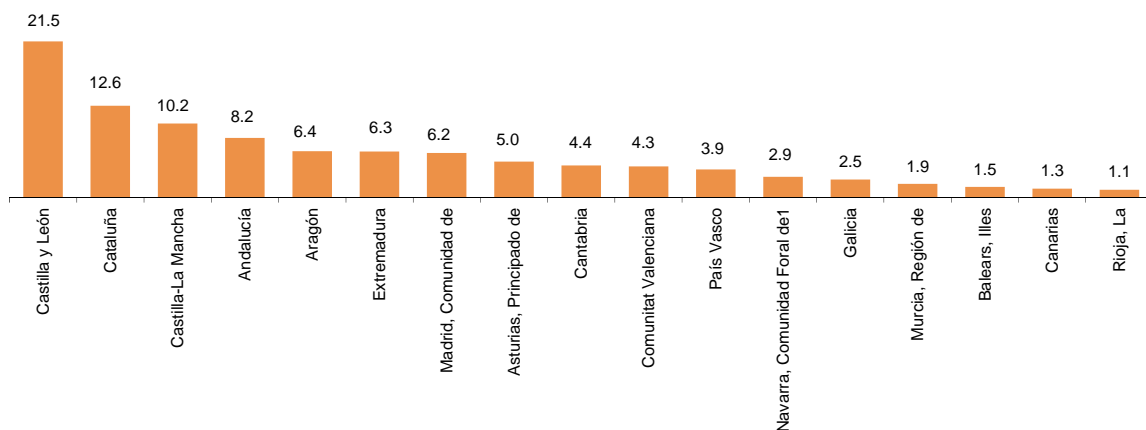
Occupancy rate Percentage



By Autonomous Communities, Castilla y León was the preferred destination, with 70,741 overnight stays, 6.8% less than in February 2018. Canarias reached the highest occupancy rate, with 39.1% of the bed-places offered.

By tourist area, Pirineus was the main destination, with 21,014 overnight stays. The Corona Forestal Natural Park reached the highest occupancy rate, with 46.9% of the bed-places offered.

Distribution of overnight stays: residents Percentage

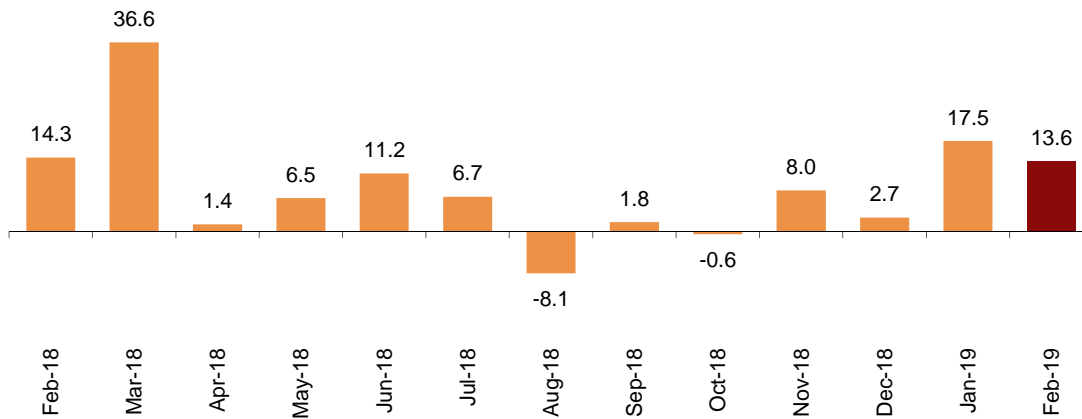


Hostels

Overnight stays in hostels registered an annual increase of 13.6% in February. Resident overnight stays grew by 10.3%, and those of non-residents by 20.1%.

Annual variation rate for overnight stays

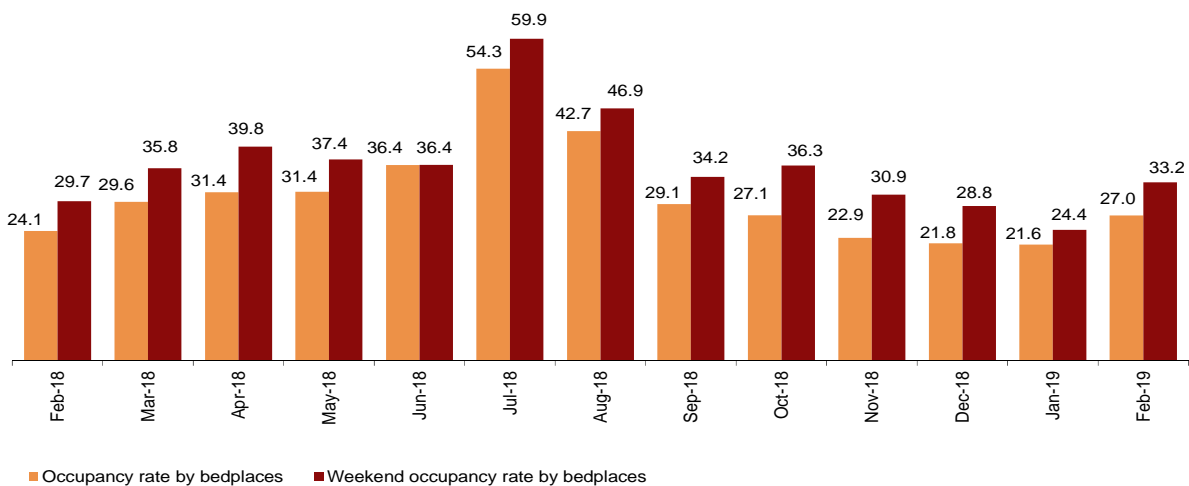
Percentage



27.0% of the bed-places were occupied, 12.0% more than in February 2018. The weekend occupancy rate reached 33.2%, with a 11.8% increase.

Occupancy rate

Percentage



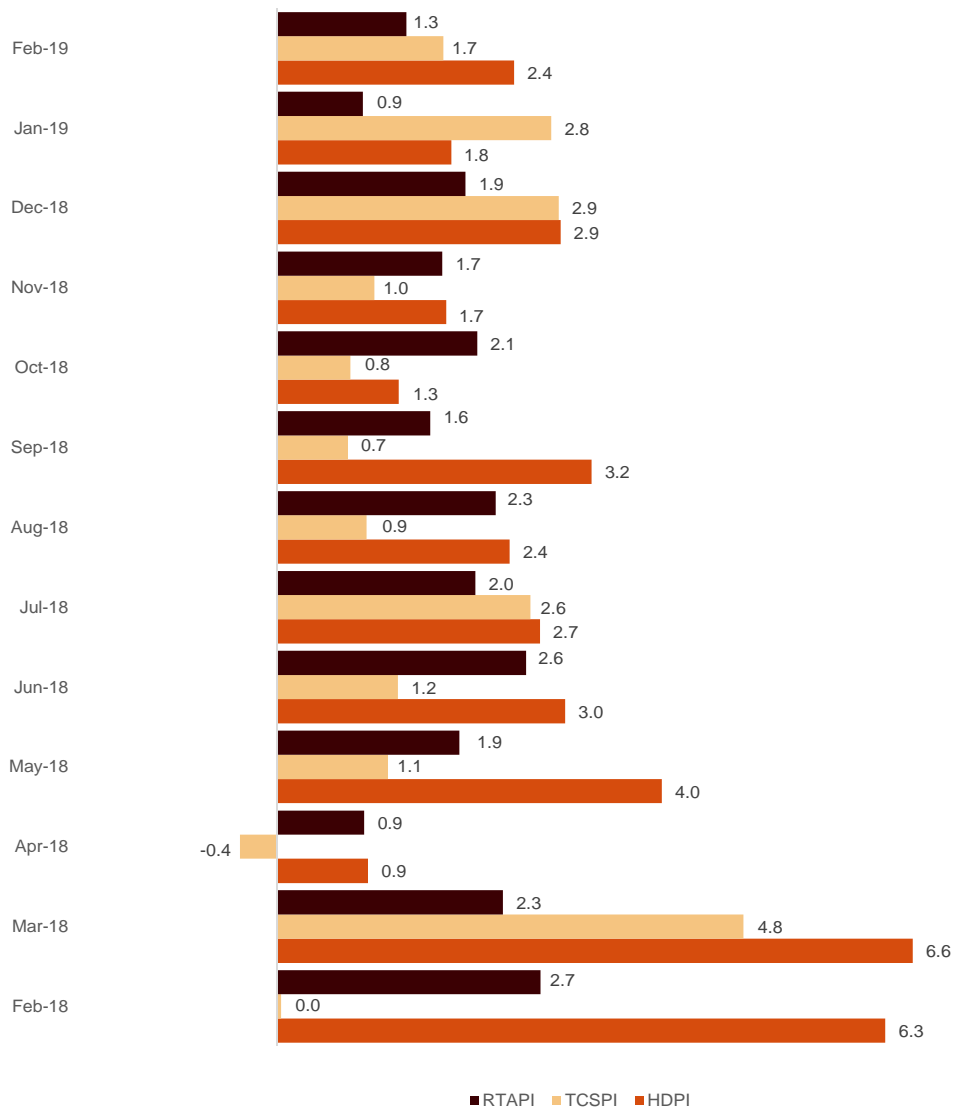
By Autonomous Community, Cataluña was the preferred destination, with 55,091 overnight stays, 23.6% more than in February 2018. Comunidad de Madrid reached the highest occupancy rate, with 60.3% of the bed-places offered.

Price indices

The Holiday Dwelling Price Index (HDPI) increased by 2.4% in February compared to the same month in 2018.

For its part, the Tourist Campsite Price Index (TCPI) increased by 1.7% in its annual rate and the Rural Tourism Accommodation Price Index (RTAPI) recorded an increase of 1.3%.

Prices Indices. Annual variation rate
Percentage



Evolution of travellers and overnight stays in all Spanish collective tourist accommodation

In February, overnight stays in Spanish collective tourist accommodation (hotels¹, holiday dwellings, tourist campsites, rural tourism accommodation and youth hostels) registered a 0.3% decrease in the annual rate. Resident overnight stays grew by 2.5%, while non-resident overnight stays fell by 1.8% as compared with February 2018.

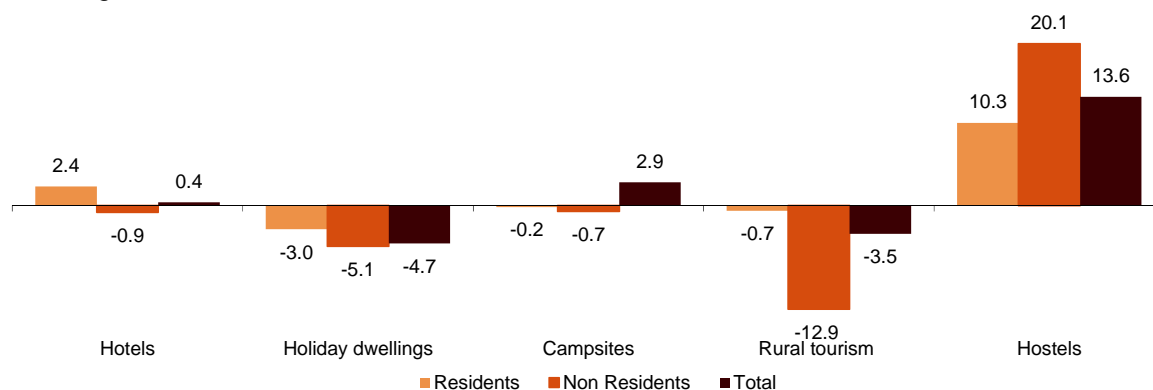
The average stay decreased 3.2%, and stood at 3.2 overnight stays per traveller.

Travellers and overnight stays in collective tourist accommodation were:

February 2019	Holiday dwellings	Campsites	Rural T.	Hostels	Non-hotel	Hotels	Total
Arrivals	634,673	167,245	194,847	61,920	1,058,685	6,003,840	7,062,525
Residents	201,991	105,147	170,492	42,099	519,729	3,316,151	3,835,880
Non-residents	432,682	62,097	24,355	19,822	538,956	2,687,689	3,226,645
Overnight stays	3,895,746	1,163,984	406,292	170,193	5,636,215	16,590,095	22,226,310
Residents	628,866	274,861	321,656	110,157	1,335,540	6,388,716	7,724,256
Non-residents	3,266,880	889,123	84,637	60,036	4,300,676	10,201,379	14,502,055

Of the total number of overnight stays in collective tourist accommodation, 75% corresponded to hotels and 25% to non-hotel tourist accommodation.

Overnight stays in collective tourist accommodation. Annual variation rate Percentage



The main countries of origin for all regulated tourist accommodation were the United Kingdom (with 25.4% of the total number of non-resident overnight stays), Germany (17.1%) and France (6.6%).

Canarias was the preferred destination, with over 7.5 million overnight stays (5.5% less than in February 2018). It was followed by Andalucía, with 3.5 million overnight stays (and an increase of 3.5%) and Cataluña, with 2.8 million (and an annual increase of 5.9%).

¹ The press release corresponding to Hotel Tourism Short-Term Trends was published on 22 March.

Revision and updating of data

Coinciding with today's publication, the INE has updated the data for February 2018 of the Occupancy Surveys in: Holiday Dwellings (HDOS), Campsites (COS), Rural Tourism Accommodation (RTAOS) and Hostels (HOS). As well as the Holiday Dwelling Price Index (HDPI), the Tourist Campsite Price Index (TCPI) and the Rural Tourism Accommodation Price Index (RTAPI).

Methodological note

The main objective of the Holiday Dwelling Occupancy Survey (HDOS) is to ascertain the behaviour of a series of variables that make it possible to describe the segment that occupies this type of accommodation within the tourist sector, both from the point of view of supply and demand.

The Holiday Dwelling Price Index (HDPI) is a statistical measure of the monthly evolution of the prices that holiday dwelling apply to their clients.

Type of operation: monthly continuous survey.

Population scope: holiday dwellings and/or companies operating holiday dwellings.

Geographical scope: the entire national territory, with the exception of Ceuta and Melilla where there are no establishments of this type.

Reference period of the results: the month.

Reference period of the information: The consultation of basic data refers to a fortnight of the month, chosen randomly, in such a way that among all the establishments they cover the complete month.

Type of sampling: stratified sampling by province and size of establishment, and for Canarias and Illes Balears stratified at island-size level.

Collection method: questionnaire filled in directly by the establishment.

For more information on these statistical operations, you can consult the [methodology and the standardised methodological report](#) for each of them in INEbase.

The main objective of the Campsite Occupancy Survey (COS) is to ascertain the behaviour of a series of variables that make it possible to describe the segment that occupies this type of accommodation within the tourist sector, both from the point of view of supply and demand.

The Tourist Campsite Price Index (TCPI) is a statistical measure of the monthly evolution of the prices that campsites apply to their clients.

Type of operation: monthly continuous survey.

Population scope: camping establishments.

Geographical scope: the entire national territory, with the exception of Ceuta and Melilla where there are no establishments of this type.

Reference period of the results: the month.

Reference period of the information: seven consecutive days of each month, chosen randomly in such a way that all the establishments cover the whole month.

Sample size: approximately 1200 establishments.

Type of sampling: comprehensive survey in all provinces.

Collection method: questionnaire filled in directly by the establishment.

For more information on these statistical operations, you can consult the [methodology and the standardised methodological report](#) for each of them in INEbase.

The main objective of the Rural Tourism Accommodation Occupancy Survey (RTAOS) is to ascertain the behaviour of a series of variables that make it possible to describe the fundamental characteristics of this type of accommodation within the tourist sector, both from the point of view of supply and demand.

The Rural Tourism Accommodation Price Index (RTAPI) is a statistical measure of the monthly evolution of the prices that entrepreneurs of this type of accommodation apply to their clients.

Type of operation: monthly continuous survey.

Population scope: rural tourism establishments registered as such in the corresponding register of each Autonomous Community.

Geographical scope: the entire national territory, with the exception of Ceuta and Melilla where there are no establishments of this type.

Reference period of the results: the month.

Reference period of the information: The consultation of basic data refers to all the days of the month.

Type of sampling: comprehensive survey in all provinces except those where the population size is large enough to take a sample.

Collection method: questionnaire filled in directly by the establishment.

For more information on these statistical operations, you can consult the [methodology and the standardised methodological report](#) for each of them in INEbase.

The main objective of the Hostels Occupancy Survey (HOS) is to ascertain the behaviour of a series of variables that make it possible to describe the fundamental characteristics of this type of accommodation within the tourist sector, both from the point of view of supply and demand.

For more information on this statistical operation, you can consult the [methodology and the standardised methodological report](#) in INEbase.

For further information see **INEbase:** www.ine.es/en/ Twitter: [@es_ine](https://twitter.com/es_ine)

All press releases at: www.ine.es/en/prensa/prensa_en.htm

Press office: Telephone numbers: (+34) 91 583 93 63 /94 08 – gprensa@ine.es

Information Area: Telephone number: (+34) 91 583 91 00 – www.ine.es/infoine/?L=1

Tourist Accommodation Occupancy Survey (Holiday Dwellings)

February 2019

Provisional data

1st April 2019

1. Travellers, overnight stays and average stay by Autonomous Cities and Communities

Autonomous Cities and Communities	Travellers			Overnight stays			Average stay
	Total	Residents in Spain	Residents abroad	Total	Residents in Spain	Residents abroad	
TOTAL	634,673	201,991	432,682	3,895,746	628,866	3,266,880	6.14
Andalucía	150,315	66,816	83,499	542,756	136,694	406,062	3.61
Aragón	14,789	13,454	1,335	39,840	33,191	6,650	2.69
Asturias, Principado de	1,178	1,109	69	2,411	2,203	208	2.05
Balears, Illes	4,980	655	4,325	31,243	4,898	26,345	6.27
Canarias	282,752	23,404	259,348	2,400,961	113,080	2,287,880	8.49
Cantabria	3,100	2,933	167	6,825	6,059	766	2.20
Castilla y León	9,965	8,317	1,648	21,385	17,761	3,624	2.15
Castilla - La Mancha	6,290	5,863	428	19,953	17,096	2,857	3.17
Cataluña	36,511	17,032	19,478	190,771	90,221	100,550	5.23
Comunitat Valenciana	61,884	23,603	38,281	398,845	82,366	316,479	6.45
Extremadura	4,519	4,008	510	7,401	6,634	767	1.64
Galicia	3,741	3,345	397	8,997	8,045	952	2.40
Madrid, Comunidad de	39,953	21,135	18,817	152,302	72,671	79,630	3.81
Murcia, Región de	4,708	2,729	1,979	35,197	14,869	20,329	7.48
Navarra, Comunidad Foral de	2,430	2,015	415	7,385	5,370	2,014	3.04
País Vasco	4,742	2,965	1,777	23,840	12,536	11,303	5.03
Rioja, La	2,816	2,609	208	5,633	5,171	462	2.00
Ceuta	-	-	-	-	-	-	-
Melilla	-	-	-	-	-	-	-
Annual rate	0.29	1.74	-0.37	-4.73	-2.95	-5.06	-5.01
Cumulative annual rate	-1.28	-0.16	-1.76	-4.90	-2.72	-5.30	-3.67

2. Capacity, occupancy and number of staff by Autonomous Cities and Communities

Autonomous Cities and Communities	Capacity		Level of occupancy				Employed personnel
	Estimated bedplaces	Estimated Holiday dwelling	Per bedplaces	Per bedplaces at weekend	Per Holiday dwelling	Per Holiday dwelling at weekend	
TOTAL	405,427	107,454	34.19	36.92	57.74	60.93	23,474
Andalucía	69,283	17,976	28.01	33.11	44.59	50.44	4,115
Aragón	7,763	1,777	18.27	33.73	26.33	42.66	506
Asturias, Principado de	3,425	840	2.51	5.13	4.11	7.74	214
Balears, Illes	3,898	1,077	28.75	33.60	47.45	54.87	249
Canarias	151,563	46,502	56.24	56.46	82.73	83.18	11,570
Cantabria	3,471	915	7.02	13.52	12.05	17.99	367
Castilla y León	5,654	1,293	13.45	26.21	22.79	37.47	514
Castilla - La Mancha	5,087	1,276	14.00	25.37	22.97	35.52	568
Cataluña	23,659	5,885	28.76	33.86	45.92	51.26	947
Comunitat Valenciana	100,895	21,109	14.11	15.49	32.06	34.69	2,362
Extremadura	2,268	525	11.65	20.76	18.94	31.75	305
Galicia	3,955	998	8.10	11.54	18.23	23.33	243
Madrid, Comunidad de	9,575	3,783	56.57	63.17	74.60	80.16	568
Murcia, Región de	7,647	1,784	16.44	17.50	36.09	37.41	220
Navarra, Comunidad Foral de	1,840	368	14.32	20.62	29.58	33.31	380
País Vasco	3,911	1,014	21.70	26.82	42.81	48.48	234
Rioja, La	1,533	332	13.12	27.79	22.26	42.13	111
Ceuta	-	-	-	-	-	-	-
Melilla	-	-	-	-	-	-	-
Annual rate	-1.24	-1.12	-3.48	-3.04	-2.65	-2.01	-0.58
Cumulative annual rate	-0.39	-0.64	-4.38	-3.93	-3.25	-2.83	-0.94

3. Travellers, overnight stays, capacity, occupancy, total number of staff with greater number of overnight stays¹

Provinces	Travellers		Overnight stays			Capacity		Level of occupancy			Employed personnel
	Residents in Spain	Residents abroad	Residents in Spain	Residents abroad	Average stay	Estimated bed-places	Estimated holiday dwelling	Per bed-places	Per Holiday dwelling	Per Holiday dwelling at weekend	
Palmas, Las	12,890	161,072	66,146	1,460,400	8.78	96,752	29,474	56.03	83.79	83.97	7,297
Santa Cruz de Tenerife	10,514	98,276	46,934	827,480	8.04	54,811	17,028	56.61	80.89	81.83	4,273
Málaga	20,690	51,633	44,088	314,498	4.96	41,131	10,530	31.09	51.62	53.36	2,563
Alicante\Alacant	12,669	27,577	46,852	267,972	7.82	73,566	15,672	15.28	34.78	37.29	1,742
Barcelona	6,442	15,801	66,367	86,705	6.88	9,783	2,914	55.84	77.13	79.94	469
Sevilla	14,389	19,117	29,016	49,636	2.35	6,378	1,859	43.73	65.23	74.91	478
Granada	20,046	9,431	41,568	24,875	2.25	8,019	2,026	29.29	38.29	60.71	535
Valencia\València	7,515	10,093	21,473	39,944	3.49	14,471	3,025	15.16	33.23	36.70	460
Castellón\Castelló	3,419	612	14,041	8,563	5.61	12,858	2,412	6.28	12.90	15.32	161
Huesca	7,825	444	18,975	2,050	2.54	4,524	991	16.54	20.61	37.84	237
Girona	4,626	2,518	9,686	9,068	2.62	9,513	2,011	7.04	11.91	17.80	301
Lleida	4,877	758	12,489	3,489	2.84	2,991	659	19.05	26.58	38.39	103
Almería	1,908	921	4,598	8,201	4.52	5,484	1,341	8.74	15.22	17.41	93
Gipúzkoa	1,002	1,152	3,630	8,029	5.41	2,218	546	18.70	30.73	35.86	134
Teruel	4,221	182	9,703	440	2.30	2,153	497	16.74	24.52	48.38	180

¹ Provinces belonging to uniprovincial Autonomous Communities have not been included because they are reflected in previous tables.

4. Travellers, overnight stays, capacity, occupancy, total number of staff from tourist areas with greater number of overnight stays

Tourist Areas	Travellers		Overnight stays			Capacity		Level of occupancy			Employed personnel
	Residents in Spain	Residents abroad	Residents in Spain	Residents abroad	Average stay	Estimated bed-places	Estimated holiday dwelling	Per bed-places	Per Holiday dwelling	Per Holiday dwelling at weekend	
Isla de Gran Canaria	4,699	79,960	22,472	801,190	9.73	50,993	15,493	57.43	85.70	85.97	3,677
Isla de Tenerife	8,271	92,055	38,507	764,650	8.01	48,890	15,007	58.29	82.96	83.96	3,757
Isla de Lanzarote	4,443	59,138	26,542	474,259	7.88	31,000	9,270	57.28	85.51	85.66	2,570
Costa del Sol	16,713	48,992	37,241	302,860	5.18	39,219	9,952	30.92	52.22	53.72	2,456
Costa Blanca	12,231	26,857	44,990	261,213	7.83	71,575	15,279	15.27	34.71	37.25	1,703
Isla de Fuerteventura	3,749	21,973	17,131	184,950	7.86	14,759	4,711	48.53	74.12	74.05	1,050
Costa Barcelona	3,007	2,591	55,849	31,542	15.61	4,814	1,675	64.83	81.37	82.77	164
Barcelona	2,509	13,153	8,568	55,025	4.06	4,479	1,091	50.45	78.68	81.92	289
Isla de La Palma	1,074	2,904	4,764	33,184	9.54	2,584	927	52.00	73.50	74.57	267
Isla de La Gomera	896	3,269	2,691	29,434	7.71	2,964	989	38.63	62.37	61.79	224

5. Travellers, overnight stays, capacity, occupancy, total number of staff from tourist sites with greater number at overnights stays

Tourist sites	Travellers		Overnight stays			Capacity		Level of occupancy			Employed personnel
	Residents in Spain	Residents abroad	Residents in Spain	Residents abroad	Average stay	Estimated bed-places	Estimated holiday dwelling	Per bed-places	Per Holiday dwelling	Per Holiday dwelling at weekend	
San Bartolomé de Tirajana	2,776	46,424	12,774	474,397	9.90	31,266	9,665	55.35	82.85	83.10	2,259
Arona	1,239	39,810	6,547	347,855	8.63	20,119	6,446	62.76	84.44	85.19	1,578
Mogán	1,108	30,619	6,230	301,577	9.70	18,272	5,183	59.98	91.71	92.07	1,309
Tías	1,784	32,828	10,005	277,477	8.31	15,987	5,031	63.64	88.44	88.69	1,212
Adeje	1,208	26,297	9,771	228,660	8.67	14,421	4,060	58.08	85.56	85.93	1,026
Benidorm	4,404	15,784	14,837	133,225	7.33	19,570	4,814	27.02	55.85	61.87	583
Madrid	20,323	18,804	69,237	78,777	3.78	9,163	3,647	57.44	74.21	79.58	531
Teguise	1,769	14,379	9,962	110,225	7.44	8,002	2,414	53.40	84.36	84.36	619
Puerto de la Cruz	2,787	8,554	10,322	86,367	8.53	5,336	2,141	64.40	84.73	87.94	483
San Miguel de Abona	2,804	14,896	8,869	75,563	4.77	5,894	1,589	51.15	87.70	88.83	346

6. Travellers and overnight stays by countries of residence

Countries	Travellers		Overnight stays	
	Total	%	Total	%
TOTAL	634,673	100.00	3,895,746	100.00
Residents in Spain	201,991	31.83	628,866	16.14
Residents abroad	432,682	68.17	3,266,880	83.86
Total residents abroad	432,682	100.00	3,266,880	100.00
Total residents in E.U (excluding Spain)	349,023	80.67	2,699,850	82.64
- Germany	41,782	9.66	449,865	13.77
- Austria	2,663	0.62	22,600	0.69
- Belgium	5,771	1.33	52,110	1.60
-Denmark	15,936	3.68	127,773	3.91
- Finland	19,334	4.47	163,410	5.00
- France	22,903	5.29	111,595	3.42
- Greece	376	0.09	1,397	0.04
- Ireland	15,999	3.70	106,184	3.25
- Italy	15,935	3.68	81,296	2.49
- Luxembourg	333	0.08	2,460	0.08
- Netherlands	20,434	4.72	191,618	5.87
- Poland	6,109	1.41	36,941	1.13
- Portugal	4,063	0.94	13,342	0.41
- United Kingdom	137,694	31.82	1,007,947	30.85
- Czech Republic	1,751	0.40	10,786	0.33
- Sweden	30,202	6.98	275,159	8.42
- Other EU countries	7,740	1.79	45,368	1.39
Norway	24,468	5.66	259,433	7.94
Russia	4,103	0.95	21,570	0.66
Switzerland	3,625	0.84	28,618	0.88
Other european countries	5,880	1.36	42,369	1.30
United States of America	6,849	1.58	30,525	0.93
Rest of America	12,312	2.85	90,344	2.77
African countries	4,248	0.98	19,748	0.60
Other countries	22,172	5.12	74,422	2.28

**Tourist Accommodation Occupancy Survey
Campsite Occupancy Survey (COS)**

February 2019

Provisional data

1st April 2019

1. Travellers, overnight stays and average stay by category of establishment

Category	Travellers			Overnight stays			Average stay
	Total	Residents in Spain	Residents abroad	Total	Residents in Spain	Residents abroad	
TOTAL	167,245	105,147	62,097	1,163,984	274,861	889,123	6.96
Luxury and first-class	68,579	41,370	27,209	509,839	118,403	391,436	7.43
Second-class	81,993	50,863	31,129	594,402	131,670	462,731	7.25
Third-class	16,673	12,914	3,759	59,743	24,787	34,956	3.58
Annual rate	10.93	18.27	0.38	4.52	21.23	0.25	-5.78
Cumulative annual rate	5.98	7.95	3.34	1.93	7.71	0.48	-3.82

2. Open establishments, capacity, occupancy and number of staff by category of establishments

Category	Estimated open establishments	Capacity		Occupied pitches	Occupancy rate per pitch	Weekend occupancy rate	Employed personnel
		Estimated bedplaces	Estimated pitches				
TOTAL	455	284,185	90,533	1,006,847	39.72	40.54	3,200
Luxury and first-class	125	124,291	38,242	413,954	38.66	40.39	1,491
Second-class	257	139,857	45,532	524,590	41.15	40.87	1,486
Third-class	73	20,037	6,759	68,303	36.09	39.37	223
Annual rate	1.63	3.09	3.07	2.90	-0.17	-0.74	4.84
Cumulative annual rate	1.46	1.29	1.42	2.80	1.37	1.12	4.97

3. Travellers, overnight stays and average stay by Autonomous Cities and Communities

Autonomous cities and communities	Travellers			Overnight stays			Average stay
	Total	Residents in Spain	Residents abroad	Total	Residents in Spain	Residents abroad	
TOTAL	167,245	105,147	62,097	1,163,984	274,861	889,123	6.96
Andalucía	39,430	19,142	20,288	240,872	54,404	186,468	6.11
Aragón	7,428	6,502	925	17,301	15,241	2,060	2.33
Asturias, Principado de	770	697	73	1,545	1,403	142	2.01
Balears, Illes	-	-	-	-	-	-	-
Canarias	-	-	-	-	-	-	-
Cantabria	162	162	0	263	263	0	1.62
Castilla y León	3,499	1,662	1,837	5,639	3,055	2,584	1.61
Castilla - La Mancha	1,509	1,197	312	2,789	2,167	622	1.85
Cataluña	48,228	38,524	9,703	114,936	75,714	39,222	2.38
Comunitat Valenciana	36,969	15,582	21,387	601,991	58,029	543,962	16.28
Extremadura	1,506	1,150	356	2,873	2,249	624	1.91
Galicia	220	47	173	333	145	188	1.52
Madrid, Comunidad de	11,644	10,536	1,108	32,136	29,578	2,558	2.76
Murcia, Región de	6,536	3,289	3,246	109,462	9,351	100,111	16.75
Navarra, Comunidad Foral de	2,336	2,002	334	10,452	9,845	607	4.47
País Vasco	2,322	1,434	887	6,851	4,499	2,352	2.95
Rioja, La	2,291	1,811	480	6,131	5,513	618	2.68
Ceuta	-	-	-	-	-	-	-
Melilla	-	-	-	-	-	-	-

4. Open establishments, capacity, occupancy and number of staff by autonomous cities and communities

Autonomous cities and communities	Estimated open establishments	Capacity		Occupied pitches	Occupancy rate per pitch	Weekend occupancy rate	Employed personnel
		Estimated bedplaces	Estimated pitches				
TOTAL	455	284,185	90,533	1,006,847	39.72	40.54	3,200
Andalucía	100	62,248	19,874	169,054	30.38	31.74	767
Aragón	38	15,293	4,719	28,786	21.78	23.02	150
Asturias, Principado de	5	3,506	1,003	4,542	16.17	12.63	23
Balears, Illes	-	-	-	-	-	-	-
Canarias	-	-	-	-	-	-	-
Cantabria	5	3,109	822	12,060	52.43	53.22	15
Castilla y León	22	8,082	2,644	12,263	16.56	20.17	57
Castilla - La Mancha	13	4,371	1,350	10,094	26.70	28.33	57
Cataluña	82	57,166	18,457	160,198	31.00	34.71	673
Comunitat Valenciana	103	69,089	21,348	386,454	64.65	64.40	849
Extremadura	6	2,158	844	6,475	27.39	31.32	39
Galicia	15	4,561	1,495	3,168	7.57	6.95	45
Madrid, Comunidad de	18	17,058	5,765	71,341	44.20	46.62	185
Murcia, Región de	17	14,766	4,859	72,810	53.51	51.35	165
Navarra, Comunidad Foral de	11	6,479	1,965	15,978	29.03	28.86	56
País Vasco	10	5,491	1,732	8,769	18.09	24.42	44
Rioja, La	6	7,195	2,185	37,663	61.55	59.06	50
Ceuta	-	-	-	-	-	-	-
Melilla	-	-	-	-	-	-	-

5. Travellers and overnight stays, average stay, capacity, occupancy and number of staff by provinces with the greatest number of overnight stays¹

Provinces	Travellers		Overnight stays		Average stay	Estimated open establishments	Estimated pitches	Occupancy rate per pitch	Employed personnel
	Residents in	Residents abroad	Residents in	Residents abroad					
	Spain		Spain						
Alicante\Alacant	4,539	10,631	26,385	373,931	26.39	44	10,189	82.31	427
Castellón\Castelló	2,318	7,469	12,773	117,683	13.33	34	6,266	46.03	248
Málaga	3,765	5,743	12,672	84,283	10.20	29	4,913	45.11	232
Valencia\València	8,725	3,287	18,871	52,349	5.93	25	4,893	51.73	174
Almería	1,595	3,505	8,819	44,561	10.47	17	2,585	43.36	101
Girona	13,877	4,775	26,051	17,865	2.35	33	5,843	30.68	243
Barcelona	12,094	2,682	22,117	16,706	2.63	20	6,009	27.83	225
Granada	2,487	3,749	5,104	24,732	4.78	20	2,626	29.59	107
Cádiz	2,957	3,387	4,816	24,026	4.55	12	3,013	23.06	121
Huelva	5,800	2,116	18,668	5,379	3.04	9	4,498	20.10	109
Tarragona	5,592	2,011	13,091	3,832	2.23	12	3,145	24.72	110
Lleida	6,962	235	14,455	818	2.12	18	3,460	42.75	95
Huesca	4,319	264	9,236	808	2.19	21	3,140	26.92	83
Gipuzkoa	977	778	2,501	1,293	2.16	6	1,311	15.39	32
Zaragoza	454	587	2,619	1,112	3.58	7	738	14.52	32

¹ Provinces belonging to uniprovincial Autonomous Communities have not been included because they are reflected in previous tables.

6. Travellers, overnight stays, average stay, open establishments, capacity, occupancy and number of staff from tourist areas with the greatest number of overnight stays

Tourist areas	Travellers		Overnight stays		Average stay	Estimated open establishments	Estimated pitches	Occupancy rate per pitch	Employed personnel
	Residents in Spain	Residents abroad	Residents in Spain	Residents abroad					
	Costa Blanca	2,342	7,936	13,005					
Costa de Castellón	1,466	7,007	9,028	115,413	14.69	29	5,809	47.07	229
Costa Cálida	1,123	2,774	4,220	91,790	24.64	9	3,818	57.17	140
Costa del Sol	2,176	4,382	9,907	80,996	13.86	15	3,702	53.17	178
Costa Valencia	3,429	1,681	9,260	45,163	10.65	11	3,086	59.21	104
Costa de Almería	1,309	3,443	8,329	41,878	10.57	14	2,254	44.15	84
Pirineus	19,022	225	36,513	590	1.93	37	5,959	45.07	195
Costa Brava	5,909	4,702	9,936	17,648	2.60	17	3,884	24.29	182
Costa Barcelona	5,148	2,599	10,407	16,541	3.48	8	4,204	21.81	146
Costa de la Luz (Cádiz)	2,286	2,651	3,919	22,582	5.37	9	2,447	24.81	103
Costa de la Luz (Huelva)	5,498	2,050	18,180	5,112	3.09	7	4,354	19.82	103
Costa Tropical	560	1,533	1,780	18,342	9.61	7	1,246	36.25	40
Costa Daurada	5,185	1,641	12,300	2,684	2.20	8	2,325	29.06	87
Pirineo Aragonés	4,253	264	9,170	808	2.21	19	2,988	25.99	81
pn Doñana	2,814	717	4,937	2,378	2.07	5	2,777	11.22	65

7. Travellers, overnight stays, average stay, open establishments, capacity, occupancy and number of staff from tourist sites with the greatest number at overnights stays

Tourist sites	Travellers		Overnight stays		Average stay	Estimated open establishments	Estimated pitches	Occupancy rate per pitch	Employed personnel
	Residents in Spain	Residents abroad	Residents in Spain	Residents abroad					
	Benidorm	394	1,992	4,338					
Cartagena	130	1,018	1,229	58,986	28.00	3	2,555	43.40	84
Oliva	290	1,379	1,299	34,671	21.55	5	1,267	56.42	72
Cabanes	141	1,068	544	34,106	28.00	4	1,215	53.94	58
Marbella	663	2,059	3,931	28,454	11.90	3	1,313	47.47	69
Vélez-Málaga	1,049	1,115	2,641	28,187	14.25	5	1,073	62.50	71
Benicasim/Benicàssim	80	1,724	488	30,153	16.99	4	872	67.85	48
Mazarrón	350	1,093	1,717	25,829	19.09	3	882	87.71	34
Calp	19	1,086	259	24,933	22.80	5	485	96.22	24
Peñíscola/Peñíscola	152	2,044	1,312	23,626	11.36	8	1,340	35.87	45
Campello, el	379	919	2,774	14,198	13.08	5	375	89.86	33
Níjar	793	1,622	2,561	11,075	5.65	3	542	44.00	33

8. Travellers and overnight stays by countries of residence

Countries	Travellers		Overnight stays	
	Total	%	Total	%
TOTAL	167,245	100.00	1,163,984	100.00
Residents in Spain	105,147	62.87	274,861	23.61
Residents abroad	62,097	37.13	889,123	76.39
TOTAL residents abroad	62,097	100.00	889,123	100.00
TOTAL residents in EU (excluding Spain)	57,614	92.78	851,566	95.78
- Germany	13,243	21.33	218,055	24.52
- Austria	715	1.15	7,060	0.79
- Belgium	2,344	3.77	40,699	4.58
- Denmark	525	0.85	12,003	1.35
- Finland	412	0.66	11,230	1.26
- France	11,524	18.56	83,649	9.41
- Greece	0	0.00	59	0.01
- Ireland	581	0.94	6,592	0.74
- Italy	970	1.56	6,222	0.70
- Luxembourg	178	0.29	2,558	0.29
- Netherlands	9,221	14.85	117,130	13.17
- Poland	168	0.27	826	0.09
- Portugal	307	0.49	1,415	0.16
- United Kingdom	15,384	24.77	311,387	35.02
- Czech Republic	32	0.05	375	0.04
- Sweden	1,639	2.64	29,675	3.34
- Other EU countries	371	0.60	2,632	0.30
Norway	433	0.70	10,120	1.14
Russia	43	0.07	143	0.02
Switzerland	2,251	3.62	20,552	2.31
Other European countries	649	1.04	1,702	0.19
United States of America	114	0.18	447	0.05
Rest of America	319	0.51	1,049	0.12
African countries	7	0.01	263	0.03
Other countries	667	1.07	3,281	0.37

COS (TABLES ANNEX) - February 2019. Provisional data (4/4)

**Tourist accommodation occupancy survey
(Rural tourist accommodation)**

February 2019

Provisional data

1st April 2019

1. Number of travellers, overnight stays and average stay by Autonomous City and Community

Autonomous Communities	Number of travellers			Number of overnight stays			Average stay
	Total	Residents In Spain	Residents abroad	Total	Residents In Spain	Residents abroad	
TOTAL	194,847	170,492	24,355	406,292	321,656	84,637	2.09
Andalucía	18,844	14,868	3,976	40,916	26,367	14,549	2.17
Aragón	8,304	7,998	306	21,630	20,546	1,084	2.60
Asturias, Principado de	8,369	8,088	282	16,488	15,987	501	1.97
Balears, Illes	7,795	2,725	5,070	21,129	4,713	16,416	2.71
Canarias	8,126	1,833	6,293	38,322	4,053	34,269	4.72
Cantabria	8,317	8,007	310	14,849	14,256	593	1.79
Castilla y León	38,301	37,254	1,047	70,741	69,048	1,693	1.85
Castilla-La Mancha	18,300	17,735	564	33,819	32,760	1,058	1.85
Cataluña	25,100	22,302	2,798	46,376	40,645	5,730	1.85
Comunitat Valenciana	8,519	7,755	764	16,174	13,797	2,377	1.90
Extremadura	11,424	10,577	847	21,792	20,423	1,369	1.91
Galicia	5,910	5,328	582	9,985	8,012	1,972	1.69
Madrid, Comunidad de	12,334	12,033	301	20,224	19,805	419	1.64
Murcia, Región de	3,672	3,393	279	6,661	6,073	588	1.81
Navarra, Comunidad Foral de ¹	3,644	3,469	175	9,715	9,186	528	2.67
País Vasco	5,994	5,281	713	13,927	12,519	1,407	2.32
Rioja, La	1,892	1,844	48	3,546	3,464	82	1.87
Ceuta	-	-	-	-	-	-	-
Melilla	-	-	-	-	-	-	-
Annual rate	2.86	2.65	4.33	-3.50	-0.67	-12.91	-6.18
Cumulative annual rate	0.43	-0.15	4.56	-3.43	-0.96	-11.49	-3.84

2. Open rural establishments, bed-places, occupancy rates and employed personnel by Autonomous City and Community

Autonomous Communities	Estimated open rural establishments	Estimated bed-places	Occupancy rate			Employed personnel
			Of bed-places	Of bed-places at weekend	Of bedrooms	
TOTAL	15,554	146,126	9.91	23.08	12.68	21,997
Andalucía	2,146	17,991	8.11	17.00	10.74	3,167
Aragón	1,084	8,380	9.19	21.92	11.06	1,191
Asturias, Principado de	1,252	12,001	4.90	10.88	6.20	1,714
Balears, Illes	176	3,311	22.67	26.70	31.60	668
Canarias	545	3,483	39.12	42.44	58.39	828
Cantabria	329	4,876	10.86	29.40	14.01	537
Castilla y León	3,431	29,443	8.57	23.91	10.39	4,644
Castilla-La Mancha	1,632	14,066	8.57	23.56	10.30	2,110
Cataluña	1,779	15,714	10.52	31.09	12.91	2,287
Comunitat Valenciana	760	9,242	6.24	14.87	10.18	1,069
Extremadura	574	6,939	11.20	25.21	14.64	886
Galicia	382	4,853	7.31	17.47	8.29	605
Madrid, Comunidad de	238	3,935	18.32	45.99	23.41	748
Murcia, Región de	153	2,340	10.16	30.25	12.23	246
Navarra, Comunidad Foral de ¹	654	5,037	6.88	15.09	10.14	808
País Vasco	317	3,488	14.23	24.84	17.39	382
Rioja, La	105	1,028	12.22	37.09	12.37	109
Ceuta	-	-	-	-	-	-
Melilla	-	-	-	-	-	-
Annual rate	1.51	0.96	-4.40	-3.80	-2.97	5.06
Cumulative annual rate	2.31	1.58	-4.94	-4.82	-4.15	5.32

¹ Due to the updating in the directory of establishments carried out in C. Foral de Navarra, the data to be published since January 2019 for C. Foral de Navarra,

Pirineo Navarro and the national total are not directly comparable with the data published last year, therefore, data link coefficients have been calculated

to allow the comparison of data between different years. These coefficients are available in INE website (www.ine.es)

3. Number of travellers, overnight stays and average stay in Provinces with the greatest number of overnight stays¹

Provinces	Number of travellers			Number of overnight stays			Average stay
	Total	Residents In Spain	Residents abroad	Total	Residents In Spain	Residents abroad	
St Cruz de Tenerife	5,687	1,233	4,454	28,598	2,582	26,016	5.03
Barcelona	9,886	7,641	2,245	17,772	14,221	3,551	1.80
Cáceres	9,412	8,687	724	17,762	16,666	1,096	1.89
Girona	7,974	7,682	291	15,791	14,184	1,607	1.98
Ávila	8,175	7,848	327	15,040	14,427	613	1.84
Segovia	7,962	7,882	80	13,826	13,710	117	1.74
Huesca	4,288	4,099	189	11,660	11,125	535	2.72
Málaga	3,454	2,142	1,312	10,963	3,727	7,236	3.17
Palmas, Las	2,439	600	1,839	9,724	1,471	8,253	3.99
Albacete	4,729	4,716	13	9,579	9,555	24	2.03
Lleida	5,234	5,070	164	9,540	9,185	355	1.82
Toledo	5,402	5,273	130	9,134	8,739	394	1.69
Burgos	4,333	4,254	80	9,125	8,993	132	2.11
Salamanca	4,619	4,527	91	8,069	7,961	108	1.75
Gipuzkoa	3,593	3,034	559	7,967	7,007	960	2.22

¹ Provinces belonging to uniprovincial Autonomous Communities have not been included because they are reflected in previous tables.

4. Open rural establishments, bed-places, occupancy rates and employed personnel in Provinces with the highest number of overnight stays¹

Provinces	Estimated open rural establishments	Estimated bed-places	Occupancy rate			Employed personnel
			Of bed-places	Of bed-places at weekend	Of bedrooms	
St Cruz de Tenerife	442	2,598	39.10	42.02	59.44	633
Barcelona	551	4,715	13.43	37.05	15.60	855
Cáceres	466	5,578	11.36	25.65	15.04	718
Girona	499	5,253	10.72	33.73	13.65	559
Ávila	739	5,806	9.24	27.80	10.44	961
Segovia	450	4,203	11.72	37.91	13.16	617
Huesca	576	4,378	9.49	21.51	10.51	628
Málaga	1,182	7,818	5.00	8.04	7.50	1,597
Palmas, Las	103	885	39.16	43.69	55.27	194
Albacete	695	4,422	7.73	22.50	8.90	869
Lleida	509	3,622	9.39	28.30	11.99	594
Toledo	216	2,439	13.34	30.16	16.14	296
Burgos	369	3,498	9.31	26.96	11.49	454
Salamanca	546	4,294	6.71	16.55	9.10	741
Gipuzkoa	147	1,690	16.81	29.88	19.96	183

¹ Provinces belonging to uniprovincial Autonomous Communities have not been included because they are reflected in previous tables.

5. Number of travellers, overnight stays, average stay, capacity and occupancy rates in areas with the highest number of overnight stays

Areas	Number of travellers		Number of overnight stays			Capacity		Occupancy rate		
	Residents In Spain	Residents abroad	Residents In Spain	Residents abroad	Average stay	Estimated open rural establish.	Estimated bed-places	Of bed-places	Of bed-places at weekend	Of bedrooms
Pirineus	10,774	159	20,377	637	1.92	740	6,038	12.40	40.69	14.17
Isla de Mallorca	1,924	4,698	3,508	15,635	2.89	158	3,026	22.47	26.41	32.07
Isla de Tenerife	1,000	2,845	1,529	12,847	3.74	100	1,175	43.43	50.58	54.97
Extremadura Norte	6,252	345	11,638	449	1.83	305	3,670	11.76	26.49	15.37
P.Natural de Corona Forestal	834	2,267	1,235	10,595	3.81	73	895	46.94	54.77	58.57
Isla de La Palma	62	1,099	428	10,689	9.57	252	983	40.24	39.01	73.26
Parque Nacional Sierra de Guadarrama	6,855	207	10,039	250	1.46	112	1,785	20.50	58.61	22.42
P.Nacional Teide	699	2,149	1,082	9,106	3.58	65	823	43.98	45.73	56.70
Pirineo Navarro	3,162	72	8,404	143	2.64	549	4,070	7.49	17.31	11.35
Costa Brava	3,663	271	6,455	1,305	1.97	284	3,067	9.03	27.25	13.03
Pirineo Aragónés	3,785	37	7,578	130	2.02	541	4,191	6.55	19.99	7.54
Sierras de Tejeda, Almjara y Alhama	1,849	1,790	2,635	5,015	2.10	424	2,640	10.35	14.42	13.69
P.Nacional Taburiente	32	675	155	6,078	8.81	133	536	41.34	40.55	74.19
Costa Barcelona	2,779	507	4,949	1,198	1.87	145	1,372	15.96	32.70	19.39
Isla Gran Canaria	396	949	968	4,072	3.75	78	555	32.41	39.93	50.21

6. Number of travellers, overnight stays, average stay, capacity, occupancy rates and employed personnel per rural house by Autonomous City and Community²

Autonomous Communities	Number of travellers		Number of overnight stays			Capacity		Occupancy rate		Employed personnel
	Residents In Spain	Residents abroad	Residents In Spain	Residents abroad	Average stay	Estimated open rural establish.	Estimated bed-places	Of bed-places	Of bed-places at weekend	
TOTAL	118,448	16,038	233,394	59,299	2.18	13,520	111,583	9.34	22.68	17,491
Andalucía	14,763	3,861	26,187	14,333	2.18	2,143	17,837	8.10	16.97	3,152
Aragón	6,451	266	17,160	1,039	2.71	868	6,554	9.88	22.59	966
Asturias, Principado de	2,780	59	4,671	59	1.67	807	5,317	3.18	7.54	906
Balears, Illes	1,938	3,356	3,608	9,763	2.53	92	1,391	34.10	38.95	252
Canarias	572	3,032	1,918	22,244	6.70	515	2,629	32.62	36.06	656
Cantabria	2,641	112	5,419	248	2.06	193	2,322	8.71	23.92	288
Castilla y León	22,832	274	46,562	550	2.04	3,090	22,501	7.47	22.56	3,741
Castilla-La Mancha	16,936	551	31,596	1,044	1.87	1,601	13,337	8.72	23.83	2,057
Cataluña	22,302	2,798	40,645	5,730	1.85	1,779	15,714	10.52	31.09	2,287
Comunitat Valenciana	5,973	626	10,915	1,934	1.95	712	6,600	6.94	16.60	940
Extremadura	5,588	93	10,672	131	1.90	361	3,649	10.56	26.44	513
Galicia	3,957	426	6,187	890	1.61	286	3,524	7.15	18.22	433
Madrid, Comunidad de	1,461	6	4,731	11	3.23	89	984	17.14	40.41	95
Murcia, Región de	2,669	103	5,020	297	1.92	141	2,002	9.47	31.60	202
Navarra, Comunidad Foral de	2,912	149	7,841	474	2.72	558	4,267	6.95	14.92	681
País Vasco	2,828	279	6,798	469	2.34	179	1,926	13.44	23.91	214
Rioja, La	1,844	48	3,464	82	1.87	105	1,028	12.22	37.09	109
Ceuta	-	-	-	-	-	-	-	-	-	-
Melilla	-	-	-	-	-	-	-	-	-	-

² To facilitate the comparability between data from different Autonomous Communities (and because of the different regulation and different characteristics),

a group called rural house has been created, with those establishments with similar typology (location, capacity, etc...).

The variables included in the previous table have been estimated with that type of establishments.

7. Travellers and overnight stays by country of residence

Results by countries	Travellers		Overnight stays	
	Total	%	Total	%
TOTAL	194,847	100.00	406,292	100.00
Residents in Spain	170,492	87.50	321,656	79.17
Residents abroad	24,355	12.50	84,637	20.83
Total Residents abroad	24,355	100.00	84,637	100.00
Total Residents in EU (excluding Spain)	18,747	76.97	71,200	84.12
- Germany	5,328	21.88	27,150	32.08
- Belgium	762	3.13	3,550	4.19
- France	4,546	18.66	8,945	10.57
- Italy	535	2.20	1,317	1.56
- Netherlands	1,589	6.52	8,466	10.00
- Portugal	844	3.47	1,824	2.16
- United Kingdom	3,310	13.59	11,868	14.02
Switzerland	571	2.35	1,933	2.28
Other European countries	2,999	12.31	11,075	13.09
United States of America	630	2.59	1,853	2.19
Other countries	3,242	13.31	6,657	7.87

Tourist Accommodation Occupancy Survey Hostels Occupancy Survey (HOS)

February 2019

Provisional data

1st April 2019

1. Travellers, overnight stays and average stay by Autonomous Cities and Communities

Autonomous cities and communities	Travellers			Overnight stays			Average stay
	Total	Residents in Spain	Residents abroad	Total	Residents in Spain	Residents abroad	
TOTAL	61,920	42,099	19,822	170,193	110,157	60,036	2.75
Andalucía	10,663	9,469	1,194	39,966	36,478	3,488	3.75
Aragón	4,682	4,573	109	12,306	11,793	513	2.63
Asturias, Principado de	92	78	14	187	169	18	2.03
Balears, Illes	-	-	-	-	-	-	-
Canarias	4,031	897	3,133	11,644	2,432	9,212	2.89
Cantabria	1,002	995	6	1,868	1,859	9	1.86
Castilla y León	3,101	2,797	304	6,130	5,698	432	1.98
Castilla - La Mancha	1,706	1,615	91	2,890	2,688	203	1.69
Cataluña	19,685	11,701	7,984	55,091	29,023	26,068	2.80
Comunitat Valenciana	5,621	2,529	3,092	15,151	5,211	9,940	2.70
Extremadura	416	364	52	740	687	53	1.78
Galicia	-	-	-	-	-	-	-
Madrid, Comunidad de	4,790	2,170	2,620	10,444	3,470	6,974	2.18
Murcia, Región de	-	-	-	-	-	-	-
Navarra, Comunidad Foral de	852	755	97	2,117	1,920	197	2.48
País Vasco	3,282	2,841	441	8,019	6,161	1,858	2.44
Rioja, La	775	740	35	1,123	984	139	1.45
Ceuta	-	-	-	-	-	-	-
Melilla	-	-	-	-	-	-	-
Annual rate	-0.61	-1.43	1.16	13.57	10.28	20.14	14.27
Cumulative annual rate	-1.30	-1.89	-0.15	15.26	12.80	19.90	16.78

2. Open establishments, capacity, occupancy and number of staff by autonomous cities and communities

Autonomous cities and communities	Capacity		Occupancy rate		Employed personnel
	Estimated open establishments	Estimated bed-places	Of bed-places	Of bed-places at weekend	
TOTAL	221	22,505	27.01	33.17	1,583
Andalucía	16	3,379	42.24	44.71	214
Aragón	19	1,737	25.30	30.33	93
Asturias, Principado de	4	321	2.08	2.80	36
Balears, Illes	-	-	-	-	-
Canarias	32	752	55.32	57.56	74
Cantabria	6	431	15.46	24.31	20
Castilla y León	23	2,138	10.24	14.47	166
Castilla - La Mancha	21	2,113	4.89	8.31	71
Cataluña	35	4,717	41.71	54.11	357
Comunitat Valenciana	11	1,908	28.37	35.72	102
Extremadura	10	620	4.26	12.52	33
Galicia	-	-	-	-	-
Madrid, Comunidad de	6	618	60.33	76.00	171
Murcia, Región de	-	-	-	-	-
Navarra, Comunidad Foral de	7	709	10.67	10.77	55
País Vasco	17	1,857	15.42	19.04	108
Rioja, La	6	334	12.01	18.15	10
Ceuta	-	-	-	-	-
Melilla	-	-	-	-	-
Annual rate	6.50	1.36	12.04	11.75	1.04
Cumulative annual rate	4.63	1.07	13.94	14.16	0.36

3. Travellers and overnight stays by countries of residence

Countries	Travellers		Overnight stays		Average stay
	Total	%	Total	%	
TOTAL	61,920	100.00	170,193	100.00	2.75
Residents in Spain	42,099	67.99	110,157	64.72	2.62
Residents abroad	19,822	32.01	60,036	35.28	3.03
TOTAL residents abroad	19,822	100.00	60,036	100.00	3.03
TOTAL residents in E.U. (excluding Spain)	12,615	63.64	34,069	56.75	2.70
- Germany	2,475	12.49	6,802	11.33	2.75
- Belgium	405	2.04	937	1.56	2.31
- France	2,927	14.77	7,906	13.17	2.70
- Italy	1,901	9.59	5,638	9.39	2.97
- Netherlands	695	3.51	2,118	3.53	3.05
- Portugal	668	3.37	1,661	2.77	2.49
- United Kingdom	1,567	7.90	4,194	6.99	2.68
Switzerland	321	1.62	752	1.25	2.34
Other European countries	3,643	18.38	9,188	15.30	2.52
United States of America	1,436	7.24	4,715	7.85	3.28
Other countries	3,784	19.09	16,124	26.86	4.26

HOLIDAY DWELLING PRICE INDEX (HDPI)

February 2019

Provisional data

1st April 2019

National general index and breakdown by rates

	Index	Annual variation rate
TOTAL	135.78	2.44
Normal	130.22	2.62
Weekend	126.02	3.13
Tour-operators and travel agencies	141.33	2.26

National general index and breakdown by modalities

	Index	Annual variation rate
TOTAL	135.78	2.44
Studio	134.43	2.83
Dwellings 2/4 bedplaces	136.09	1.72
Dwellings 4/6 bedplaces	136.40	4.99

Tourist Campsite Price Index (TCSPI). 2002 Base

February 2019

Provisional data

1st April 2019

National general index and breakdown by rates

	Index	Annual variation rate
TOTAL	152.48	1.71
Normal rate	147.84	2.37
Special rate for stays up to one month	141.58	-1.38
Special rate for stays longer than one month	156.67	0.88
Bungalow rate ¹	104.99	2.46

¹2014 Base

National general index and breakdown by categories

	Index	Annual variation rate
TOTAL	152.48	1.71
Luxury and first	163.09	4.12
Second	145.78	-0.66
Third	157.16	6.86

TCSPI (ANNEX OF TABLES) - February 2019. Provisional data

Rural Tourism Accommodation Price Index (RTAPI)

February

Provisional data

1st April 2019

General Autonomous Cities and Communities and national indices

	Index	Annual variation rate
TOTAL	141.29	1.33
Andalucía	145.94	-2.11
Aragón	157.88	-2.59
Asturias, Principado de	150.41	4.87
Balears, Illes	117.94	-0.58
Canarias	116.20	-1.48
Cantabria	172.17	0.12
Castilla y León	154.63	2.24
Castilla - La Mancha	136.66	-1.79
Cataluña	145.37	6.17
Comunitat Valenciana	151.59	1.20
Extremadura	107.58	-0.33
Galicia	146.33	2.62
Madrid, Comunidad de	142.19	3.84
Murcia, Región de	137.98	4.76
Navarra, Comunidad Foral de	164.43	-0.69
País Vasco	165.23	3.75
Rioja, La	145.95	6.86
Ceuta	-	-
Melilla	-	-

National general index and breakdown by rates

	Index	Annual variation rate
TOTAL	141.29	1.33
Normal	138.60	0.28
Weekend	138.23	1.76

National general index and breakdown by rent modality

	Index	Annual variation rate
TOTAL	141.29	1.33
Shared use (in case of per room rent modality)	122.16	-0.40
Full use (rent of entire dwelling)	151.35	1.95