

1 April 2020

Non-hotel Tourist Accommodation Occupancy Survey
February 2020. Provisional data

Overnight stays in Non-Hotel Tourist Accommodation increase 36.4% in February¹ as compared with the same month of 2019

Overnight stays in non-hotel tourist accommodation (holiday dwellings, tourist campsites, rural tourism accommodation and youth hostels) exceeded 5.9 million in February, 6.4% more than in the same month of 2019. Overnight stays by residents increased by 16.8%, and those by non-residents by 3.1%.

The average stay stood at 5.0 overnight stays per traveller.

During the first two months of 2020, overnight stays increased by 4.2% as compared with the same period of the previous year.

Travellers and overnight stays in collective non-hotel tourist accommodation during the month of February were:

February 2020	Arrivals	Overnight stays
Residents	626,161	1,563,543
EU Residents (excluding Spain)	292,465	2,412,052
Rest of the world	271,795	1,998,519
TOTAL	1,190,421	5,974,114

Holiday Dwellings

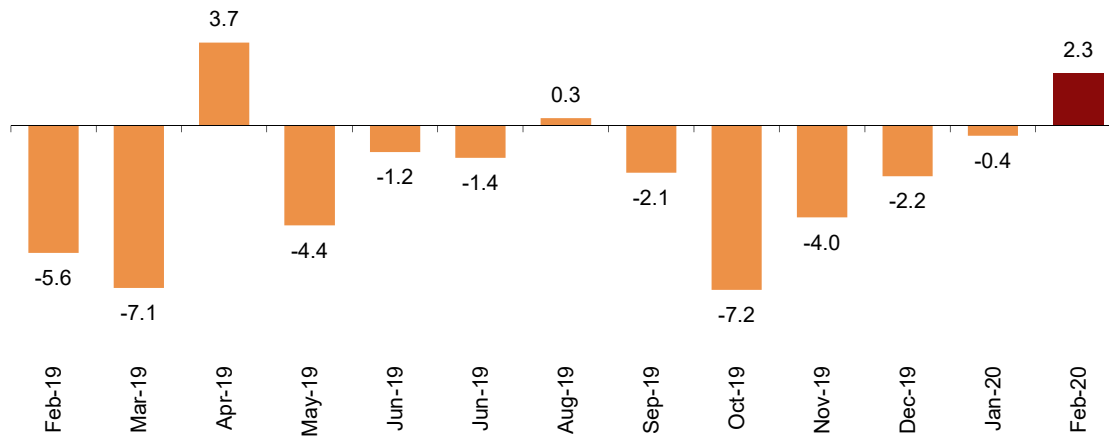
Overnight stays in holiday dwellings increased by 2.3% in February. Overnight stays by residents increased 15.9%, while those by non-residents decreased by 0.3%.

The average stay decreased by 6.0% as compared to February 2019, standing at 5.8 overnight stays per traveller.

In February, 32.7% of the bed-places offered by holiday dwellings were occupied, 3.4% less than in the same month of 2019. The weekend occupancy rate by bed-places stood at 35.4%, with a decrease of 3.5%.

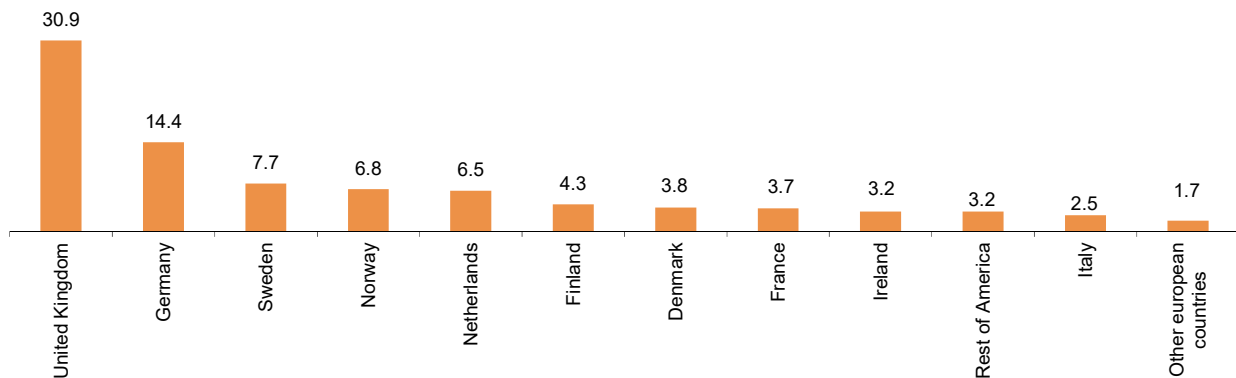
¹ The year 2020 is a leap year and the month of February has one more weekend than in February 2019.

Annual variation rate for overnight stay
Percentage



Non-resident overnight stays in holiday dwellings represented 81.7% of the total. The United Kingdom was the main country of origin, with 997,827 overnight stays, 1.2% less than in February 2019. The following country of origin was Germany, with 465,777 overnight stays, 5.5% more.

Distribution of non-residents overnight stays. Main country of residence
Percentage



Canarias was the preferred destination for holiday dwellings, with more than 2.3 million overnight stays and a decrease of 0.8% as compared to February 2019. This Autonomous Community also reached the highest occupancy rate, with 79.8% of holiday dwellings offered.

By tourist areas, the island of Tenerife was the preferred destination, with 799,660 overnight stays and an occupancy rate of 79.9% of holiday dwellings offered.

The tourist sites with the highest number of overnight stays in February were San Bartolomé de Tirajana, Arona and Mogán.

Tourist Campsites

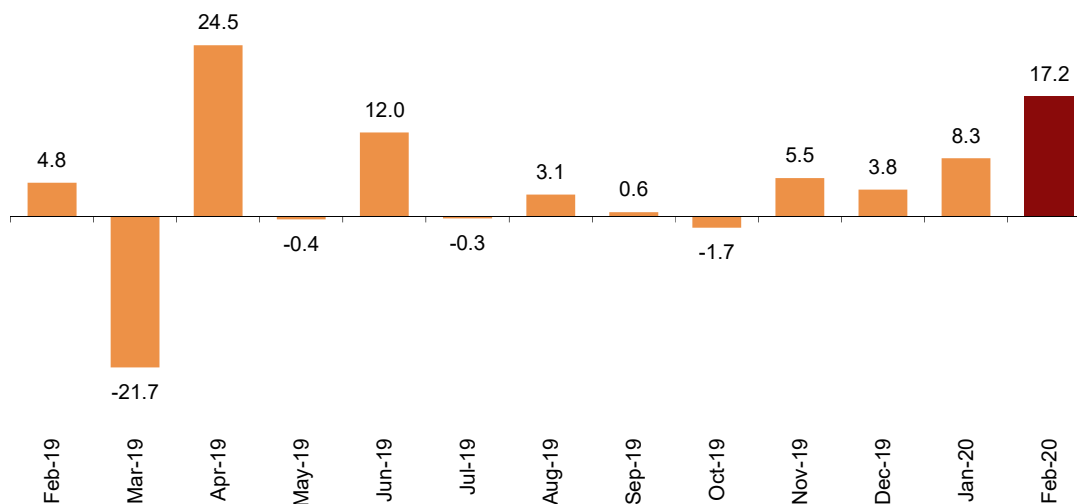
Overnight stays at tourist campsites registered in February an increase of 17.2% as compared with the same month of the previous year. Resident overnight stays grew by 24.1%, and those of non-residents by 15.0%.

During the month of February, 42.9% of the pitches offered were occupied, 8.0% more than in the same month of 2019. The weekend occupancy rate by pitch reached 44.2%, with an annual growth of 8.8%.

Non-residents accounted for 75.0% of overnight stays at tourist campsites. The United Kingdom was the main country of origin with 33.8% of overnight stays by non-residents, 12.7% more than in February 2019.

Annual variation rate for overnight stays

Percentage



Comunitat Valenciana was the preferred destination for tourist campsites, with 676,663 overnight stays, representing an annual increase of 11.9%. This Autonomous Community also reached the highest occupancy rate, with 66.9% of the pitches offered.

By tourist areas, Costa Blanca was the preferred destination, with 351,043 overnight stays and an occupancy rate of 87.5% of the pitches offered.

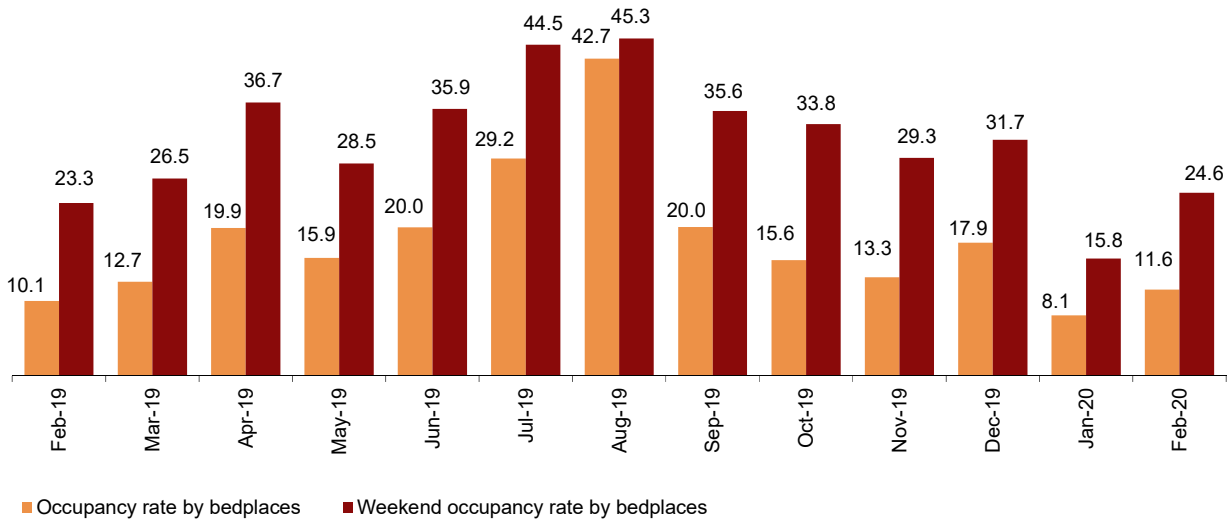
The tourist sites with the most overnight stays were Benidorm, Cartagena and Cabanes.

Rural tourism accommodation

Overnight stays in rural tourism accommodations showed an annual increase of 17.5% in February. Resident overnight stays grew by 17.7%, and those of non-residents by 16.8%.

In rural tourism accommodation, 11.6% of the bed-places were occupied, 15.3% more than February 2019. The weekend occupancy rate stood at 24.6%, with an annual increase of 5.8%.

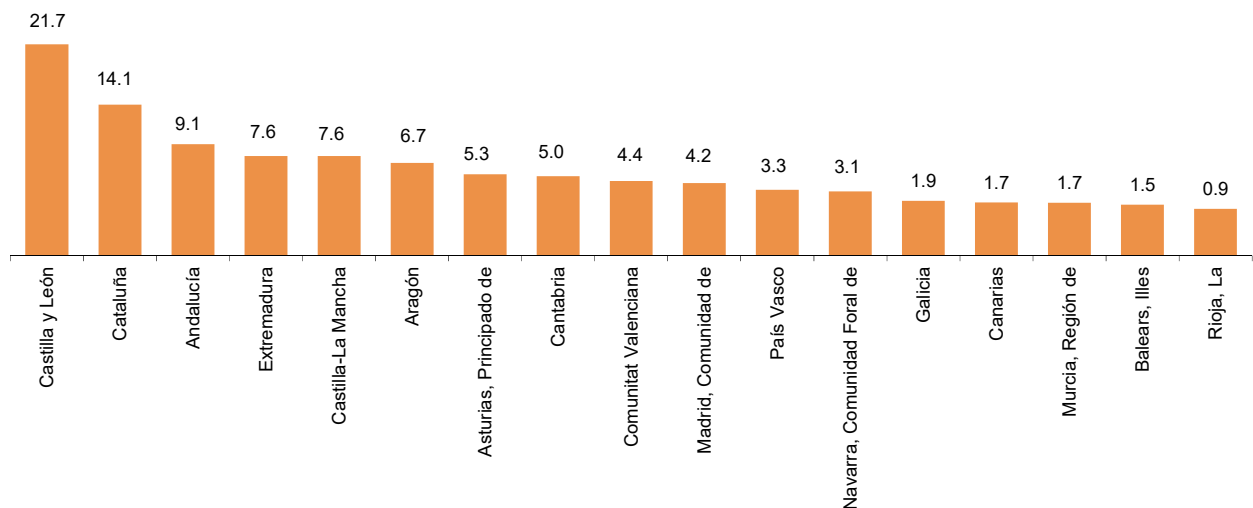
Occupancy rate Percentage



By Autonomous Community, Castilla y León was the preferred destination, with 86,806 overnight stays, 22.9% more than in February 2019. Canarias reached the highest occupancy rate, with 37.2% of the bedplaces offered.

By tourist area, Pirineus was the main destination, with 26,776 overnight stays. The Corona Forestal Natural Park reached the highest occupancy rate, with 44.7% of the bed-places offered.

Distribution of overnight stays: residents Percentage

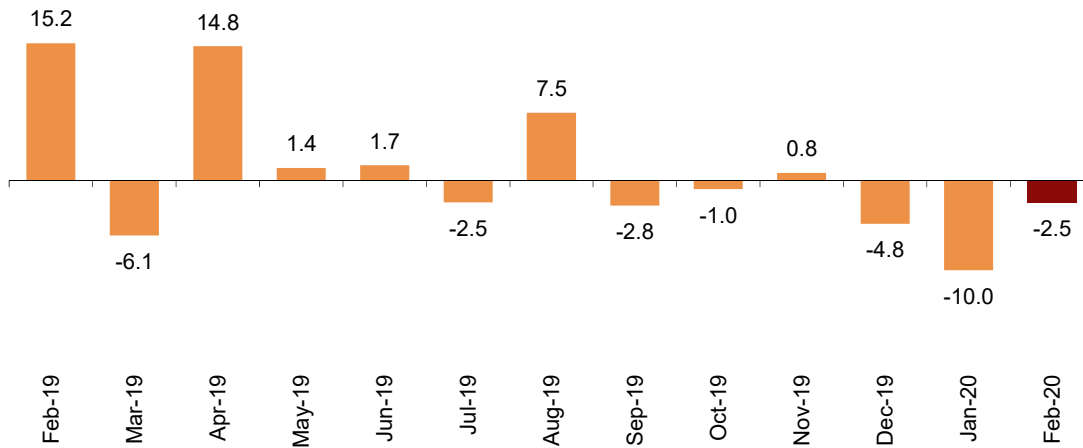


Hostels

Overnight stays in hostels registered an annual decrease of 2.5% February. Overnight stays by residents increased 1.4%, while those by non-residents decreased by 9.7%.

Annual variation rate for overnight stays

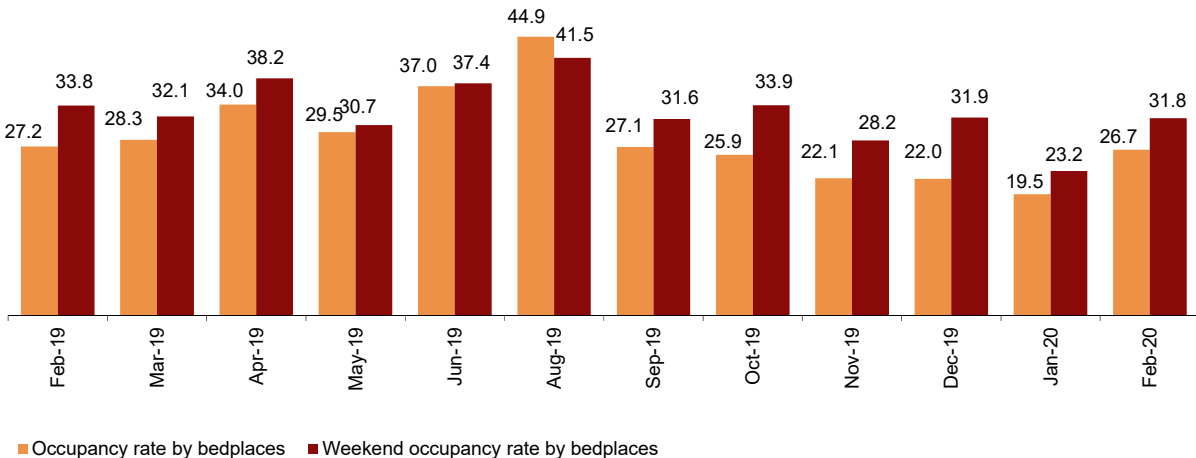
Percentage



26.7% of the available bed-places were occupied, 2.0% less than February 2019. The weekend occupancy rate reached 31.8%, with a 6.0% decrease.

Occupancy rate

Percentage



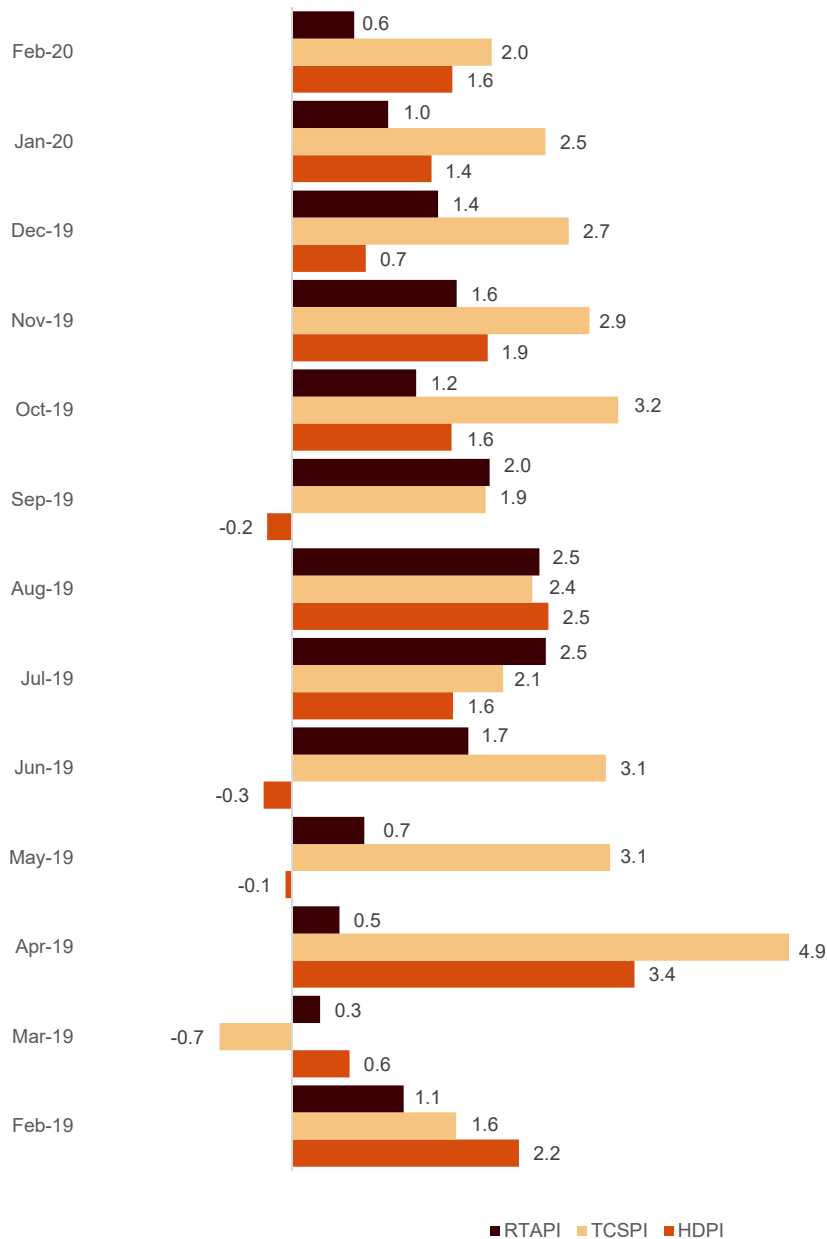
By Autonomous Community, Cataluña was the preferred destination, with 59,599 overnight stays, 7.6% more than in February 2019. Comunidad de Madrid reached the highest occupancy rate, with 62.1% of the bed-places offered.

Price indices

The Holiday Dwelling Price Index (HDPI) increased by 1.6% in February compared to the same month in 2019.

For its part, the Tourist Campsite Price Index (TCPI) increased by 2.0% in its annual rate and the Rural Tourism Accommodation Price Index (RTAPI) recorded an increase of 0.6%.

Price Indices. Annual variation rate
Percentage



Evolution of travellers and overnight stays in all Spanish collective tourist accommodation

In February, overnight stays in Spanish collective tourist accommodation (hotels², holiday dwellings, tourist campsites, rural tourism accommodation and hostels) registered a 6.7% increase in the annual rate. Resident overnight stays grew by 11.1%, and non-resident overnight stays by 4.3% as compared with February 2019.

The average stay decreased 1.7%, and stood at 3.1 overnight stays per traveller.

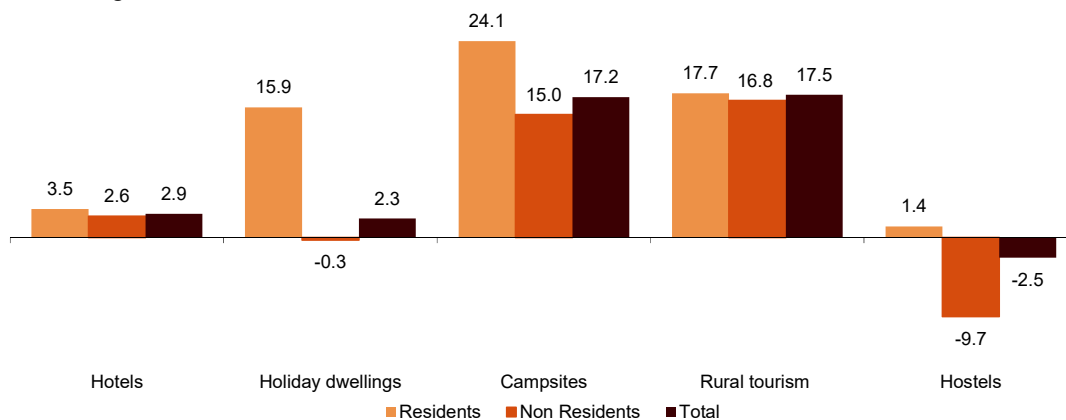
Travellers and overnight stays in collective tourist accommodation were:

February 2020	Holiday dwellings	Campsites	Rural T.	Hostels	Non-hotel	Hotels	Total
Arrivals	683,517	220,087	224,808	62,011	1,190,423	5,570,235	6,760,658
Residents	243,157	141,485	198,583	42,936	626,161	2,925,232	3,551,393
Non-residents	440,360	78,601	26,225	19,074	564,260	2,645,003	3,209,263
Overnight stays	3,950,726	1,367,593	487,464	168,330	5,974,113	15,959,217	21,933,330
Residents	722,858	342,284	384,276	114,125	1,563,543	5,692,536	7,256,079
Non-residents	3,227,868	1,025,310	103,188	54,205	4,410,571	10,266,681	14,677,252

Of the total overnight stays in collective tourist accommodation, 73% corresponded to hotels, and 27% to non-hotel tourist accommodations.

Overnight stays in collective tourist accommodation. Annual variation rate

Percentage



The main countries of origin for all types of regulated tourist accommodation were the United Kingdom (with 25.3% of the total number of non-resident overnight stays), Germany (17.0%) and France (6.8%).

Canarias was the preferred destination, with over 7.8 million overnight stays (3.9% more than in February 2019). It was followed by Andalucía, with 3.9 million overnight stays (and an increase of 11.9%) and Cataluña, with 2.8 million (and an annual decrease of 0.5%).

² The press release corresponding to Hotel Tourism Short-Term Trends was published on 23 March.

Revision and updating of data

Coinciding with today's publication, the INE has updated the data for February 2019 of the Occupancy Surveys in: Holiday Dwellings (HDOS), Campsites (COS), Rural Tourism Accommodation (RTAOS) and Hostels (HOS). As well as the Holiday Dwelling Price Index (HDPI), the Tourist Campsite Price Index (TCPI) and the Rural Tourism Accommodation Price Index (RTAPI).

Methodological note

The main objective of the Holiday Dwelling Occupancy Survey (HDOS) is to ascertain the behaviour of a series of variables that make it possible to describe the segment that occupies this type of accommodation within the tourist sector, both from the point of view of supply and demand.

The Holiday Dwelling Price Index (HDPI) is a statistical measure of the monthly evolution of the prices offered by holiday dwelling establishments to their clients.

Type of operation: on-going monthly survey.

Population scope: holiday apartment establishments and/or companies operating holiday apartments.

Geographical scope: the entire national territory, with the exception of Ceuta and Melilla, where there are no establishments of this type.

Reference period for the results: monthly.

Reference period for the information: The consultation of basic data refers to a fortnight of the month, chosen randomly, in such way that the complete month is covered among all establishments.

Type of sampling: stratified sampling by province and establishment size, and stratified at island-size level for Canarias and Illes Balears.

Collection method: questionnaire filled in directly by the establishment.

For more information on these statistical operations, you can consult the [methodology and the standardised methodological report](#) for each of them in INEbase.

The main objective of the Campsite Occupancy Survey (COS) is to ascertain the behaviour of a series of variables that make it possible to describe the segment that this type of accommodation occupies within the tourist sector, from the viewpoint of both supply and demand.

The Tourist Campsite Price Index (TCPI) is a statistical measure of the monthly evolution of the prices offered by campsites to their clients.

Type of operation: on-going monthly survey.

Population scope: camping establishments.

Geographical scope: the entire national territory, with the exception of Ceuta and Melilla, where there are no establishments of this type.

Reference period for the results: monthly.

Reference period of the information: seven consecutive days of each month, chosen randomly in such way that all the establishments cover the whole month.

Sample size: approximately 1200 establishments.

Type of sampling: comprehensive survey in all provinces.

Collection method: questionnaire filled in directly by the establishment.

For more information on these statistical operations, you can consult the [methodology and the standardised methodological report](#) for each of them in INEbase.

The main objective of the Rural Tourism Accommodation Occupancy Survey (RTAOS) is to ascertain the behaviour of a series of variables that make it possible to describe the fundamental characteristics of this type of accommodation within the tourist sector, both from the point of view of supply and demand.

The Rural Tourism Accommodation Price Index (RTAPI) is a statistical measure of the monthly evolution of the prices that entrepreneurs of this type of accommodation apply to their clients.

Type of operation: on-going monthly survey.

Population scope: rural tourism establishments registered as such in the corresponding register of each Autonomous Community.

Geographical scope: the entire national territory, with the exception of Ceuta and Melilla where there are no establishments of this type.

Reference period for the results: monthly.

Reference period for the information: The consultation of basic data refers to all the days of the month.

Type of sampling: comprehensive survey in all provinces except those where the population size is large enough to take a sample.

Collection method: questionnaire filled in directly by the establishment.

For more information on these statistical operations, you can consult the [methodology and the standardised methodological report](#) for each of them in INEbase.

The main objective of the Hostels Occupancy Survey (HOS) is to ascertain the behaviour of a series of variables that make it possible to describe the fundamental characteristics of this type of accommodation within the tourist sector, both from the point of view of supply and demand.

For more information on this statistical operation, you can consult the [methodology and the standardised methodological report](#) in INEbase.

For further information see **INEbase:** www.ine.es/en/ Twitter: [@es_ine](https://twitter.com/es_ine)

All press releases at: www.ine.es/en/prensa/prensa_en.htm

Press office: Telephone numbers: (+34) 91 583 93 63 /94 08 – gprensa@ine.es

Information Area: Telephone number: (+34) 91 583 91 00 – www.ine.es/infoine/?L=1

Tourist Accommodation Occupancy Survey (Holiday Dwellings)

February 2020

Provisional data

1st April 2020

1. Travellers, overnight stays and average stay by Autonomous Cities and Communities

Autonomous Cities and Communities	Travellers			Overnight stays			Average stay
	Total	Residents in Spain	Residents abroad	Total	Residents in Spain	Residents abroad	
TOTAL	683,517	243,157	440,360	3,950,726	722,858	3,227,868	5.78
Andalucía	156,662	76,865	79,797	571,367	163,899	407,468	3.65
Aragón	18,678	17,101	1,578	53,672	46,991	6,681	2.87
Asturias, Principado de	2,640	2,389	251	6,995	5,747	1,249	2.65
Balears, Illes	4,636	1,360	3,276	31,380	4,813	26,567	6.77
Canarias	284,086	26,429	257,658	2,361,716	123,457	2,238,259	8.31
Cantabria	6,241	5,653	588	13,415	12,012	1,403	2.15
Castilla y León	12,220	11,226	994	23,793	20,424	3,369	1.95
Castilla - La Mancha	7,447	7,153	295	22,692	20,690	2,002	3.05
Cataluña	36,188	18,167	18,020	173,369	89,839	83,529	4.79
Comunitat Valenciana	71,515	25,601	45,914	428,626	92,566	336,060	5.99
Extremadura	8,855	7,894	961	14,953	13,499	1,454	1.69
Galicia	5,162	4,617	544	13,165	11,826	1,339	2.55
Madrid, Comunidad de	49,323	23,236	26,087	155,509	69,580	85,929	3.15
Murcia, Región de	5,809	4,004	1,805	32,159	15,144	17,015	5.54
Navarra, Comunidad Foral de	5,241	4,423	818	15,944	11,684	4,260	3.04
País Vasco	5,997	4,364	1,633	25,946	14,855	11,091	4.33
Rioja, La	2,814	2,674	140	6,026	5,834	192	2.14
Ceuta	-	-	-	-	-	-	-
Melilla	-	-	-	-	-	-	-
Annual rate	8.80	20.36	3.33	2.33	15.94	-0.29	-5.95
Cumulative annual rate	7.10	17.57	2.48	0.94	11.64	-1.06	-5.75

2. Capacity, occupancy and number of staff by Autonomous Cities and Communities

Autonomous Cities and Communities	Capacity		Level of occupancy				Employed personnel
	Estimated bedplaces	Estimated Holiday dwelling	Per bedplaces	Per bedplaces at weekend	Per Holiday dwelling	Per Holiday dwelling at weekend	
TOTAL	414,581	108,523	32.71	35.35	55.31	58.28	23,962
Andalucía	70,204	17,427	27.97	33.37	47.48	54.72	4,397
Aragón	8,062	1,939	22.87	38.18	31.70	48.86	567
Asturias, Principado de	3,551	897	6.79	13.06	8.89	16.20	232
Balears, Illes	3,392	989	31.90	30.10	50.84	47.58	336
Canarias	147,992	45,618	54.70	54.31	79.75	79.09	11,303
Cantabria	3,564	866	12.98	23.87	19.74	33.19	375
Castilla y León	6,010	1,434	13.64	25.36	21.75	35.71	526
Castilla - La Mancha	5,112	1,251	15.29	26.16	26.00	39.25	417
Cataluña	23,224	5,834	25.70	30.25	41.59	46.75	979
Comunitat Valenciana	111,176	23,179	13.29	14.77	28.21	30.54	2,545
Extremadura	3,292	742	15.64	27.47	23.74	38.67	523
Galicia	3,162	842	14.29	18.49	28.06	33.47	231
Madrid, Comunidad de	10,473	3,922	50.85	56.20	70.50	75.04	576
Murcia, Región de	7,344	1,729	15.10	17.07	31.42	34.11	238
Navarra, Comunidad Foral de	2,073	402	26.41	36.44	43.61	53.41	370
País Vasco	4,148	1,060	21.55	28.97	40.84	48.69	237
Rioja, La	1,802	391	11.53	25.01	18.56	36.79	112
Ceuta	-	-	-	-	-	-	-
Melilla	-	-	-	-	-	-	-
Annual rate	2.23	0.98	-3.41	-3.26	-3.47	-3.67	2.27
Cumulative annual rate	1.01	-0.17	-1.89	-1.23	-1.49	-1.20	2.12

3. Travellers, overnight stays, capacity, occupancy, total number of staff with greater number of overnight stays¹

Provinces	Travellers		Overnight stays			Capacity		Level of occupancy			Employed personnel
	Residents in Spain	Residents abroad	Residents in Spain	Residents abroad	Average stay	Estimated bed-places	Estimated holiday dwelling	Per bed-places	Per Holiday dwelling	Per Holiday dwelling at weekend	
Palmas, Las	14,124	162,201	67,990	1,417,550	8.43	95,460	28,828	53.34	80.60	79.73	7,088
Santa Cruz de Tenerife	12,305	95,457	55,467	820,709	8.13	52,532	16,790	57.17	78.29	77.98	4,215
Málaga	19,798	49,174	44,002	310,981	5.15	41,646	9,931	29.36	54.17	58.05	2,510
Alicante/Alacant	10,564	27,536	46,295	255,570	7.92	78,291	16,697	13.29	29.00	31.09	1,797
Barcelona	6,774	13,880	63,913	65,058	6.24	8,893	2,706	49.95	70.79	72.64	472
Valencia/València	11,177	17,468	29,487	68,402	3.42	16,274	3,356	20.74	38.62	42.00	556
Sevilla	15,586	17,443	34,931	42,829	2.35	6,467	1,915	41.25	62.38	72.40	753
Granada	19,508	8,099	42,863	26,738	2.52	6,849	1,755	34.58	45.47	61.28	386
Huesca	10,499	521	29,622	2,261	2.89	4,513	1,002	24.24	31.47	50.55	292
Castellón/Castelló	3,860	910	16,784	12,088	6.05	16,611	3,126	5.99	12.83	15.29	193
Almería	5,607	2,718	12,420	11,674	2.89	10,354	2,242	7.99	13.31	20.08	296
Girona	2,929	1,222	6,575	17,059	5.69	5,494	1,325	14.83	24.90	27.49	172
Cádiz	8,173	2,014	14,966	5,808	2.04	4,202	1,084	17.04	27.14	40.27	293
Lleida	4,892	1,033	12,243	5,466	2.99	2,614	566	23.36	31.36	42.85	127
Gipúzkoa	1,856	916	6,172	7,978	5.10	2,459	596	19.82	33.34	41.54	130

¹ Provinces belonging to uniprovincial Autonomous Communities have not been included because they are reflected in previous tables.

4. Travellers, overnight stays, capacity, occupancy, total number of staff from tourist areas with greater number of overnight stays

Tourist Areas	Travellers		Overnight stays			Capacity		Level of occupancy			Employed personnel
	Residents in Spain	Residents abroad	Residents in Spain	Residents abroad	Average stay	Estimated bed-places	Estimated holiday dwelling	Per bed-places	Per Holiday dwelling	Per Holiday dwelling at weekend	
Isla de Tenerife	9,319	89,392	42,530	757,130	8.10	46,517	14,748	58.92	79.86	79.49	3,687
Isla de Gran Canaria	6,450	78,980	31,780	767,657	9.36	50,349	15,268	54.59	83.07	82.47	3,467
Isla de Lanzarote	5,014	61,069	24,142	465,621	7.41	31,350	9,330	53.51	80.53	78.95	2,622
Costa del Sol	15,924	47,933	38,863	307,011	5.42	39,652	9,369	30.04	55.78	58.92	2,412
Costa Blanca	9,997	27,248	44,959	253,284	8.01	75,335	16,116	13.65	29.67	31.73	1,718
Isla de Fuerteventura	2,661	22,152	12,069	184,272	7.91	13,761	4,230	48.38	71.84	71.61	999
Costa Barcelona	3,942	2,355	55,109	27,860	13.18	4,992	1,672	57.31	76.07	76.50	212
Barcelona	2,535	11,336	7,604	36,660	3.19	3,423	888	44.43	68.40	71.74	239
Isla de La Palma	1,496	2,946	7,666	31,251	8.76	2,646	924	50.19	71.84	71.69	264
Isla de La Gomera	1,052	3,026	3,502	31,924	8.69	2,986	1,012	40.84	66.38	66.07	238

5. Travellers, overnight stays, capacity, occupancy, total number of staff from tourist sites with greater number at overnights stays

Tourist sites	Travellers		Overnight stays			Capacity		Level of occupancy			Employed personnel
	Residents in Spain	Residents abroad	Residents in Spain	Residents abroad	Average stay	Estimated bed-places	Estimated holiday dwelling	Per bed-places	Per Holiday dwelling	Per Holiday dwelling at weekend	
San Bartolomé de Tirajana	3,867	44,036	20,434	454,099	9.91	31,032	9,467	52.54	80.08	79.73	2,125
Arona	1,872	38,759	8,518	337,070	8.51	19,965	6,284	59.35	80.40	80.40	1,611
Mogán	1,051	32,524	6,214	293,863	8.94	17,833	5,154	57.91	90.04	88.68	1,241
Tías	2,467	34,075	11,974	263,179	7.53	16,050	5,045	58.78	84.97	83.18	1,260
Adeje	1,842	28,963	11,059	223,431	7.61	14,078	4,463	57.00	74.87	73.76	992
Benidorm	3,716	16,829	16,757	147,283	7.98	21,695	5,334	26.07	53.48	56.80	637
Madrid	21,611	26,407	64,755	86,846	3.16	9,910	3,733	52.40	70.76	75.55	525
Teguiuse	2,022	15,249	10,102	114,029	7.19	8,209	2,496	51.79	77.31	76.30	654
Puerto de la Cruz	3,863	7,491	17,658	83,621	8.92	5,243	2,115	66.40	83.72	83.41	487
Valencia	8,123	16,337	20,849	56,738	3.17	8,811	1,792	30.35	55.81	60.12	394

6. Travellers and overnight stays by countries of residence

Countries	Travellers		Overnight stays	
	Total	%	Total	%
TOTAL	683,517	100.00	3,950,726	100.00
Residents in Spain	243,157	35.57	722,858	18.30
Residents abroad	440,360	64.43	3,227,868	81.70
Total residents abroad	440,360	100.00	3,227,868	100.00
Total Residents in EU-27 ¹ (without Spain)	210,869	47.89	1,679,934	52.04
- Germany	43,037	9.77	465,777	14.43
- Austria	2,663	0.60	25,637	0.79
- Belgium	6,372	1.45	50,670	1.57
- Denmark	15,300	3.47	123,538	3.83
- Finland	16,819	3.82	139,239	4.31
- France	24,503	5.56	119,420	3.70
- Greece	331	0.08	2,056	0.06
- Ireland	16,450	3.74	102,971	3.19
- Italy	15,136	3.44	82,291	2.55
- Luxembourg	359	0.08	1,925	0.06
- Netherlands	23,989	5.45	211,385	6.55
- Poland	6,454	1.47	37,031	1.15
- Portugal	5,153	1.17	19,185	0.59
- Czech Republic	1,502	0.34	13,094	0.41
- Sweden	26,041	5.91	248,111	7.69
-Other EU-27 countries ²	6,762	1.54	37,605	1.17
Norway	22,526	5.12	219,028	6.79
United Kingdom	139,111	31.59	997,827	30.91
Russia	4,380	0.99	27,295	0.85
Switzerland	4,454	1.01	32,490	1.01
Other european countries	7,604	1.73	54,638	1.69
United States of America	8,569	1.95	33,621	1.04
Rest of America	19,677	4.47	102,390	3.17
African countries	4,500	1.02	19,409	0.60
Other countries	18,670	4.24	61,236	1.90

¹ Since 31 January 2020, The United Kingdom is no longer part of the E.U., hence the aggregate UE-27 is published.

² Countries included in Other UE-27 countries: Bulgaria, Cyprus, Croatia, Slovakia, Slovenia, Estonia, Hungary, Latvia, Lithuania, Malta and Romania

**Tourist Accommodation Occupancy Survey
Campsite Occupancy Survey (COS)**

February 2020

Provisional data

1st April 2020

1. Travellers, overnight stays and average stay by category of establishment

Category	Travellers			Overnight stays			Average stay
	Total	Residents in Spain	Residents abroad	Total	Residents in Spain	Residents abroad	
TOTAL	220,087	141,485	78,601	1,367,593	342,284	1,025,310	6.21
Luxury and first-class	87,026	54,597	32,429	584,234	148,120	436,115	6.71
Second-class	112,806	70,768	42,038	728,439	164,392	564,047	6.46
Third-class	20,254	16,120	4,134	54,920	29,772	25,148	2.71
Annual rate	30.47	32.98	26.17	17.16	24.05	15.03	-10.20
Cumulative annual rate	24.85	27.31	21.37	12.87	19.52	11.05	-9.60

2. Open establishments, capacity, occupancy and number of staff by category of establishments

Category	Estimated open establishments	Capacity		Occupied pitches	Occupancy rate per pitch	Weekend occupancy rate	Employed personnel
		Estimated bedplaces	Estimated pitches				
TOTAL	463	281,796	89,234	1,110,203	42.90	44.18	3,302
Luxury and first-class	122	120,425	37,235	450,175	41.69	44.86	1,515
Second-class	271	143,567	45,867	602,220	45.28	44.90	1,582
Third-class	70	17,804	6,132	57,808	32.51	36.42	205
Annual rate	1.15	-1.08	-1.63	10.03	8.00	8.79	2.43
Cumulative annual rate	1.48	0.61	-0.19	7.67	5.96	5.46	5.73

3. Travellers, overnight stays and average stay by Autonomous Cities and Communities

Autonomous cities and communities	Travellers			Overnight stays			Average stay
	Total	Residents in Spain	Residents abroad	Total	Residents in Spain	Residents abroad	
TOTAL	220,087	141,485	78,601	1,367,593	342,284	1,025,310	6.21
Andalucía	56,916	27,485	29,431	295,565	70,008	225,556	5.19
Aragón	8,622	7,094	1,528	18,864	16,291	2,574	2.19
Asturias, Principado de	2,836	2,570	266	3,970	3,441	529	1.40
Balears, Illes ¹	-	-	-	-	-	-	-
Canarias ¹	1,242	1,065	177	7,311	2,617	4,694	5.89
Cantabria	-	-	-	-	-	-	-
Castilla y León	5,364	1,790	3,575	8,225	3,426	4,799	1.53
Castilla - La Mancha	1,901	1,454	447	3,448	2,649	799	1.81
Cataluña	68,793	57,228	11,564	160,233	108,608	51,625	2.33
Comunitat Valenciana	40,434	17,504	22,930	676,663	62,613	614,051	16.74
Extremadura	1,983	1,385	598	4,272	2,831	1,441	2.15
Galicia	232	88	143	387	190	197	1.67
Madrid, Comunidad de	12,595	11,490	1,105	39,178	35,082	4,096	3.11
Murcia, Región de	7,614	3,734	3,880	121,813	12,021	109,792	16.00
Navarra, Comunidad Foral de	3,148	2,898	251	8,277	-	-	2.63
País Vasco	4,584	2,452	2,132	9,639	5,595	4,044	2.10
Rioja, La	3,029	2,455	574	7,730	6,850	880	2.55
Ceuta	-	-	-	-	-	-	-
Melilla	-	-	-	-	-	-	-

¹ The size of the sample in these communities does not facilitate the INE the broken down results, with the objective of maintaining statistical secrecy. Nevertheless, the data corresponding to these communities are included in the national total.

4. Open establishments, capacity, occupancy and number of staff by autonomous cities and communities

Autonomous cities and communities	Estimated open establishments	Capacity		Occupied pitches	Occupancy rate per pitch	Weekend occupancy rate	Employed personnel
		Estimated bedplaces	Estimated pitches				
TOTAL	463	281,796	89,234	1,110,203	42.90	44.18	3,302
Andalucía	106	62,925	19,457	189,272	33.54	38.86	734
Aragón	36	14,341	4,300	28,708	23.02	24.56	137
Asturias, Principado de	7	4,559	1,266	4,961	13.51	18.05	31
Balears, Illes ¹	-	-	-	-	-	-	-
Canarias ¹	4	3,332	1,401	6,574	16.19	17.51	20
Cantabria	-	-	-	-	-	-	-
Castilla y León	22	8,774	2,785	15,584	19.29	22.84	59
Castilla - La Mancha	14	4,714	1,433	11,388	27.40	30.63	53
Cataluña	79	53,360	17,502	191,018	37.63	38.03	645
Comunitat Valenciana	110	70,726	21,966	426,183	66.90	68.20	940
Extremadura	7	2,471	932	7,883	29.16	32.97	44
Galicia	15	4,857	1,645	2,355	4.94	4.56	42
Madrid, Comunidad de	18	17,080	5,867	77,088	45.31	45.63	220
Murcia, Región de	16	14,537	4,786	76,110	54.83	54.36	185
Navarra, Comunidad Foral de	11	5,994	1,741	14,891	29.49	28.95	66
País Vasco	8	4,493	1,426	8,422	20.36	27.89	52
Rioja, La	6	7,496	2,181	38,918	61.52	58.37	54
Ceuta	-	-	-	-	-	-	-
Melilla	-	-	-	-	-	-	-

¹ The size of the sample in these communities does not facilitate the INE the broken down results, with the objective of maintaining statistical secrecy. Nevertheless, the data corresponding to these communities are included in the national total.

5. Travellers and overnight stays, average stay, capacity, occupancy and number of staff by provinces with the greatest number of overnight stays¹

Provinces	Travellers		Overnight stays		Average stay	Estimated open establishments	Estimated pitches	Occupancy rate per pitch	Employed personnel
	Residents in Spain	Residents abroad	Residents in Spain	Residents abroad					
	Alicante/Alacant	6,213	10,645	25,715					
Castellón/Castelló	2,578	8,706	16,320	142,690	14.09	35	6,378	54.33	272
Málaga	3,221	7,562	13,314	96,018	10.14	28	4,663	45.74	210
Valencia/València	8,713	3,579	20,577	55,164	6.16	26	4,999	49.98	196
Barcelona	20,864	4,477	39,793	26,960	2.63	21	6,362	37.14	269
Almería	2,136	5,148	6,405	51,252	7.92	23	2,736	43.10	110
Girona	15,548	5,435	29,591	20,111	2.37	31	5,289	34.56	203
Cádiz	4,310	4,284	11,570	28,541	4.67	12	2,829	31.20	119
Granada	2,925	4,736	6,777	29,374	4.72	19	2,557	34.30	87
Huelva	10,934	3,203	23,434	10,266	2.38	11	4,598	23.22	124
Lleida	11,507	272	23,070	1,282	2.07	19	3,573	45.62	96
Tarragona	9,310	1,380	16,154	3,272	1.82	9	2,277	33.63	77
Huesca	4,745	266	11,078	513	2.31	21	3,103	27.71	87
Córdoba	1,984	669	4,187	1,151	2.01	5	1,018	11.74	37
Teruel	1,864	212	3,288	669	1.91	9	699	10.40	27

¹ Provinces belonging to uniprovincial Autonomous Communities have not been included because they are reflected in previous tables.

6. Travellers, overnight stays, average stay, open establishments, capacity, occupancy and number of staff from tourist areas with the greatest number of overnight stays

Tourist areas	Travellers		Overnight stays		Average stay	Estimated open establishments	Estimated pitches	Occupancy rate per pitch	Employed personnel
	Residents in Spain	Residents abroad	Residents in Spain	Residents abroad					
	Costa Blanca	3,160	7,822	15,017					
Costa de Castellón	1,862	7,996	12,628	138,512	15.33	30	5,875	56.31	245
Costa Cálida	1,471	2,861	6,317	97,788	24.03	8	3,725	57.94	146
Costa del Sol	1,323	5,291	9,480	89,863	15.02	14	3,458	55.25	158
Costa Valencia	2,883	1,989	8,961	48,773	11.85	11	3,086	60.15	114
Costa de Almería	1,569	4,999	5,765	47,399	8.09	17	2,328	44.19	88
Pirineus	25,162	254	50,712	981	2.03	36	5,956	46.38	224
Costa Barcelona	11,796	4,382	21,813	26,731	3.00	8	4,438	34.03	157
Costa de la Luz de Cádiz	3,177	3,459	9,680	26,448	5.44	9	2,263	32.50	104
Costa de la Luz de Huelva	9,956	3,054	22,177	9,824	2.46	8	4,387	22.72	111
Costa Brava	6,675	5,396	11,115	20,023	2.58	18	3,552	30.50	147
Costa Tropical	1,065	1,604	3,283	19,457	8.52	7	1,247	38.83	40
Costa Daurada	8,751	629	15,338	1,139	1.76	6	1,484	44.05	53
pn Doñana	4,405	687	10,889	2,205	2.57	5	2,777	12.87	57
Pirineo Aragonés	4,673	266	11,006	513	2.33	19	2,937	26.20	85

7. Travellers, overnight stays, average stay, open establishments, capacity, occupancy and number of staff from tourist sites with the greatest number at overnights stays

Tourist sites	Travellers		Overnight stays		Average stay	Estimated open establishments	Estimated pitches	Occupancy rate per pitch	Employed personnel
	Residents in Spain	Residents abroad	Residents in Spain	Residents abroad					
	Benidorm	436	2,043	6,180					
Cartagena	379	1,573	1,412	62,948	29.00	3	2,555	45.81	87
Cabanes	60	1,360	2,154	39,692	29.00	4	1,211	72.14	48
Marbella	949	2,370	5,024	33,095	11.49	3	1,313	53.06	67
Oliva	386	1,445	2,905	34,452	20.40	5	1,267	55.71	76
Peníscola	414	2,363	1,957	28,937	11.12	7	1,144	52.17	36
Benicasim	154	1,615	497	28,587	16.44	4	881	62.70	51
Calp	30	1,039	302	23,843	22.59	6	573	92.74	27
Villajoyosa	154	694	1,161	17,447	21.94	3	369	93.80	27
Níjar	1,069	2,664	2,828	13,832	4.46	4	572	49.04	33
Campello, El	286	700	1,862	13,918	16.00	5	375	86.27	30
Alcalá De Xivert	345	1,091	608	12,226	8.94	4	748	35.03	42

10. Travellers and overnight stays by countries of residence

Countries	Travellers		Overnight stays	
	Total	%	Total	%
TOTAL	220,087	100.00	1,367,593	100.00
Residents in Spain	141,485	64.29	342,284	25.03
Residents abroad	78,601	35.71	1,025,310	74.97
TOTAL residents abroad	78,601	100.00	1,025,310	100.00
TOTAL Residents in EU-27 ¹ (without Spain)	55,808	71.00	635,559	61.99
- Germany	18,655	23.73	253,485	24.72
- Austria	746	0.95	8,011	0.78
- Belgium	2,556	3.25	47,183	4.60
- Denmark	924	1.18	11,861	1.16
- Finland	477	0.61	10,545	1.03
- France	14,236	18.11	100,103	9.76
- Greece	11	0.01	53	0.01
- Ireland	624	0.79	6,772	0.66
- Italy	935	1.19	8,147	0.79
- Luxembourg	275	0.35	3,362	0.33
- Netherlands	13,055	16.61	149,163	14.55
- Poland	267	0.34	1,486	0.14
- Portugal	872	1.11	3,985	0.39
- Czech Republic	128	0.16	490	0.05
- Sweden	1,584	2.02	28,687	2.80
-Other EU-27 countries ²	463	0.59	2,226	0.22
Norway	440	0.56	11,082	1.08
United Kingdom	18,163	23.11	346,684	33.81
Russia	106	0.13	232	0.02
Switzerland	2,581	3.28	23,524	2.29
Other European countries	261	0.33	1,999	0.19
United States of America	176	0.22	600	0.06
Rest of America	345	0.44	1,275	0.12
African countries	27	0.03	170	0.02
Other countries	694	0.88	4,185	0.41

¹ Since 31 January 2020, The United Kingdom is no longer part of the E.U., hence the aggregate UE-27 is published.

² Countries included in Other UE-27 countries: Bulgaria, Cyprus, Croatia, Slovakia, Slovenia, Estonia, Hungary, Latvia, Lithuania, Malta and Romania

**Tourist accommodation occupancy survey
(Rural tourist accommodation)**

February 2020

Provisional data

1st April 2020

1. Number of travellers, overnight stays and average stay by Autonomous City and Community

Autonomous Communities	Number of travellers			Number of overnight stays			Average stay
	Total	Residents In Spain	Residents abroad	Total	Residents In Spain	Residents abroad	
TOTAL	224,808	198,583	26,225	487,464	384,276	103,188	2.17
Andalucía	20,481	17,093	3,388	56,592	35,009	21,583	2.76
Aragón	12,202	11,450	752	28,563	25,787	2,776	2.34
Asturias, Principado de	11,070	10,255	815	21,994	20,381	1,613	1.99
Balears, Illes	8,486	3,421	5,065	23,561	5,613	17,948	2.78
Canarias	8,431	2,292	6,139	40,858	6,563	34,295	4.85
Cantabria	10,001	9,659	342	20,640	19,370	1,270	2.06
Castilla y León	48,192	46,343	1,848	86,806	83,524	3,282	1.80
Castilla-La Mancha	14,206	13,759	447	29,782	29,165	617	2.10
Cataluña	30,580	29,226	1,354	60,027	54,252	5,775	1.96
Comunitat Valenciana	10,853	9,319	1,534	22,509	17,063	5,447	2.07
Extremadura	15,879	13,712	2,167	33,913	29,265	4,648	2.14
Galicia	5,501	4,864	636	8,254	7,429	825	1.50
Madrid, Comunidad de	10,500	10,009	491	16,777	16,063	714	1.60
Murcia, Región de	4,057	3,763	294	7,155	6,522	633	1.76
Navarra, Comunidad Foral de	5,574	5,401	172	12,309	11,935	374	2.21
País Vasco	6,827	6,092	735	14,173	12,853	1,321	2.08
Rioja, La	1,967	1,924	43	3,549	3,483	66	1.80
Ceuta	-	-	-	-	-	-	-
Melilla	-	-	-	-	-	-	-
Annual rate	14.05	15.46	4.39	17.47	17.66	16.76	3.00
Cumulative annual rate	14.25	15.59	5.23	15.43	15.86	13.85	1.03

2. Open rural establishments, bed-places, occupancy rates and employed personnel by Autonomous City and Community

Autonomous Communities	Estimated open rural establishments	Estimated bed-places	Occupancy rate			Employed personnel
			Of bed-places	Of bed-places at weekend	Of bedrooms	
TOTAL	15,403	144,770	11.59	24.60	15.36	21,957
Andalucía	2,236	18,535	10.52	20.79	16.55	3,028
Aragón	1,086	8,728	11.25	26.16	13.69	1,252
Asturias, Principado de	1,185	11,320	6.69	14.03	9.41	1,602
Balears, Illes	193	3,668	22.11	27.30	26.46	797
Canarias	584	3,778	37.21	37.34	55.08	795
Cantabria	355	5,346	13.31	26.33	18.72	623
Castilla y León	3,244	27,786	10.76	27.19	12.91	4,487
Castilla-La Mancha	1,538	12,807	8.01	19.96	11.17	1,953
Cataluña	1,752	15,828	13.05	34.09	16.52	2,408
Comunitat Valenciana	796	9,238	8.39	16.92	12.94	1,156
Extremadura	652	7,695	15.19	29.13	20.07	977
Galicia	341	4,289	6.61	15.08	7.73	601
Madrid, Comunidad de	177	3,113	18.54	40.41	23.45	630
Murcia, Región de	164	2,543	9.70	24.93	12.55	265
Navarra, Comunidad Foral de	676	5,521	7.67	17.98	10.46	869
País Vasco	324	3,550	13.70	25.76	17.48	397
Rioja, La	100	1,023	11.88	30.16	12.56	115
Ceuta	-	-	-	-	-	-
Melilla	-	-	-	-	-	-
Annual rate	-1.49	-1.53	15.26	5.80	20.04	0.36
Cumulative annual rate	0.12	0.01	13.23	4.34	16.31	1.48

3. Number of travellers, overnight stays and average stay in Provinces with the greatest number of overnight stays¹

Provinces	Number of travellers			Number of overnight stays			Average stay
	Total	Residents In Spain	Residents abroad	Total	Residents In Spain	Residents abroad	
St Cruz de Tenerife	6,176	1,564	4,612	31,851	4,732	27,119	5.16
Cáceres	12,862	10,985	1,877	27,776	24,138	3,638	2.16
Girona	12,882	12,299	583	25,615	23,087	2,528	1.99
Málaga	5,143	3,480	1,663	24,011	7,716	16,295	4.67
Ávila	9,153	9,090	64	18,340	18,205	135	2.00
Barcelona	8,176	7,765	411	16,678	14,186	2,492	2.04
Salamanca	8,295	7,558	736	16,085	14,770	1,315	1.94
Segovia	10,166	9,796	370	14,870	14,390	481	1.46
Huesca	5,746	5,308	438	12,692	11,526	1,165	2.21
Lleida	6,654	6,538	117	12,675	12,480	195	1.90
Burgos	6,741	6,673	68	12,410	12,282	128	1.84
Teruel	4,509	4,342	167	9,435	9,136	299	2.09
Albacete	4,304	4,300	4	9,179	9,174	5	2.13
Palmas, Las	2,255	728	1,527	9,008	1,831	7,177	3.99
Alicante\Alacant	4,681	3,754	928	8,566	6,204	2,361	1.83

¹ Provinces belonging to uniprovincial Autonomous Communities have not been included because they are reflected in previous tables.

4. Open rural establishments, bed-places, occupancy rates and employed personnel in Provinces with the highest number of overnight stays¹

Provinces	Estimated open rural establishments	Estimated bed-places	Occupancy rate			Employed personnel
			Of bed-places	Of bed-places at weekend	Of bedrooms	
St Cruz de Tenerife	496	2,988	36.73	37.02	56.21	627
Cáceres	507	5,996	15.97	31.24	21.26	764
Girona	507	5,408	16.29	40.11	21.94	596
Málaga	1,260	8,469	9.77	14.54	17.96	1,646
Ávila	733	5,686	11.10	31.56	13.84	997
Barcelona	529	4,665	12.32	33.31	14.72	856
Salamanca	475	3,658	15.14	35.95	17.20	796
Segovia	405	3,828	13.37	32.34	15.36	536
Huesca	561	4,318	10.11	23.79	11.98	626
Lleida	480	3,499	12.48	35.50	15.40	693
Burgos	394	3,929	10.88	29.95	13.22	461
Teruel	332	2,760	11.74	32.00	14.43	410
Albacete	703	4,528	6.98	19.70	8.79	889
Palmas, Las	88	790	39.03	38.58	50.81	168
Alicante\Alacant	201	2,411	12.23	26.16	18.99	316

¹ Provinces belonging to uniprovincial Autonomous Communities have not been included because they are reflected in previous tables.

5. Number of travellers, overnight stays, average stay, capacity and occupancy rates in areas with the highest number of overnight stays

Areas	Number of travellers		Number of overnight stays			Capacity		Occupancy rate		
	Residents In Spain	Residents abroad	Residents In Spain	Residents abroad	Average stay	Estimated open rural establish.	Estimated bed-places	Of bed-places	Of bed-places at weekend	Of bedrooms
Pirineus	13,985	51	26,491	285	1.91	713	5,965	15.44	43.75	19.85
Isla de Mallorca	2,153	4,586	3,787	16,780	3.05	177	3,368	21.04	25.60	25.54
Extremadura Norte	8,182	1,296	16,398	2,720	2.02	332	4,010	16.43	32.11	21.55
Costa Brava	7,211	547	12,989	2,271	1.97	314	3,391	15.50	36.20	18.94
Isla de Tenerife	1,022	2,802	2,379	12,632	3.93	119	1,246	41.48	43.86	55.36
P.Natural de Corona Forestal	795	2,223	1,850	10,113	3.96	81	922	44.70	47.91	58.82
Pirineo Aragonés	4,939	329	10,828	770	2.20	516	4,028	9.90	24.60	11.25
Isla de La Palma	230	1,069	1,114	10,369	8.84	260	1,130	35.04	33.77	60.67
Pirineo Navarro	4,920	172	10,972	374	2.23	575	4,649	8.39	19.15	11.21
P.Nacional Teide	771	2,085	1,654	9,270	3.82	72	851	44.22	47.05	58.53
Parque Nacional Sierra de Guadarram	7,823	325	9,791	405	1.25	72	1,163	30.13	58.64	32.00
Costa del Sol (M Iaga)	234	495	1,120	8,019	12.54	197	1,328	23.70	27.77	46.41
P.Natural Sierras de Tejeda, Almijá	754	518	1,813	6,429	6.48	315	2,025	14.03	20.16	29.05
P.Nacional Picos de Europa	3,781	262	7,533	587	2.01	232	1,938	14.44	25.36	16.66
P.Nacional Taburiente	150	614	846	5,515	8.32	146	662	33.13	31.04	55.67

6. Number of travellers, overnight stays, average stay, capacity, occupancy rates and employed personnel per rural house by Autonomous City and Community²

Autonomous Communities	Number of travellers		Number of overnight stays			Capacity		Occupancy rate		Employed personnel
	Residents In Spain	Residents abroad	Residents In Spain	Residents abroad	Average stay	Estimated open rural establish.	Estimated bed-places	Of bed-places	Of bed-places at weekend	
TOTAL	138,420	15,870	278,563	71,231	2.27	13,402	111,532	10.80	23.94	17,480
Andalucía	17,011	3,353	34,843	21,526	2.77	2,234	18,419	10.55	20.80	3,025
Aragón	9,615	685	21,698	2,614	2.36	895	7,083	11.80	27.14	1,039
Asturias, Principado de	2,734	288	5,458	556	1.99	720	4,464	4.64	8.55	820
Balears, Illes	2,133	2,149	3,805	6,590	2.43	94	1,522	23.48	33.06	205
Canarias	1,106	3,138	4,151	22,960	6.39	555	2,946	31.65	30.66	628
Cantabria	3,715	87	8,639	266	2.34	211	2,687	11.42	22.68	370
Castilla y León	29,487	1,000	57,046	1,740	1.93	2,953	21,937	9.23	24.94	3,689
Castilla-La Mancha	13,156	443	28,137	612	2.11	1,513	12,132	8.16	20.17	1,900
Cataluña	29,226	1,354	54,252	5,775	1.96	1,752	15,828	13.05	34.09	2,408
Comunitat Valenciana	7,280	1,445	14,029	4,872	2.17	749	6,743	9.66	18.37	1,049
Extremadura	7,149	757	15,191	1,769	2.15	424	4,119	14.19	30.01	562
Galicia	3,009	491	4,743	623	1.53	246	2,973	6.19	15.01	418
Madrid, Comunidad de	841	36	2,856	71	3.34	70	939	10.72	22.51	71
Murcia, Región de	2,444	111	4,785	326	2.00	154	2,245	7.85	23.71	227
Navarra, Comunidad Foral de	4,473	151	9,218	181	2.03	555	4,565	7.09	17.57	725
País Vasco	3,118	339	6,229	683	2.00	177	1,907	12.45	24.00	230
Rioja, La	1,924	43	3,483	66	1.80	100	1,023	11.88	30.16	115
Ceuta	-	-	-	-	-	-	-	-	-	-
Melilla	-	-	-	-	-	-	-	-	-	-

² To facilitate the comparability between data from different Autonomous Communities (and because of the different regulation and different characteristics),

a group called rural house has been created, with those establishments with similar typology (location, capacity, etc...).

The variables included in the previous table have been estimated with that type of establishments.

9. Travellers and overnight stays by country of residence

Results by countries	Travellers		Overnight stays	
	Total	%	Total	%
TOTAL	224,808	100.00	487,464	100.00
Residents in Spain	198,583	88.33	384,276	78.83
Residents abroad	26,225	11.67	103,188	21.17
Total Residents abroad	26,225	100.00	103,188	100.00
TOTAL Residents in EU-27 ¹ (without Spain)	16,326	62.25	71,099	68.90
- Germany	5,674	21.63	29,914	28.99
- Belgium	897	3.42	3,481	3.37
- France	3,242	12.36	8,979	8.70
- Italy	543	2.07	3,279	3.18
- Netherlands	1,771	6.75	9,279	8.99
- Portugal	1,507	5.75	4,166	4.04
United Kingdom	3,375	12.87	10,003	9.69
Switzerland	484	1.85	2,544	2.47
Other European countries	4,057	15.47	20,460	19.83
United States of America	689	2.63	3,297	3.20
Other countries	3,985	15.20	7,787	7.55

¹ Since 31 January 2020, The United Kingdom is no longer part of the E.U., hence the aggregate UE-27 is published.

**Tourist Accommodation Occupancy Survey
Hostels Occupancy Survey (HOS)**

February 2020

Provisional data

1st April 2020

1. Travellers, overnight stays and average stay by Autonomous Cities and Communities

Autonomous cities and communities	Travellers			Overnight stays			Average stay
	Total	Residents in Spain	Residents abroad	Total	Residents in Spain	Residents abroad	
TOTAL	62,011	42,936	19,074	168,330	114,125	54,205	2.71
Andalucía	8,888	7,282	1,606	31,668	28,136	3,532	3.56
Aragón	3,977	3,818	159	8,929	8,490	439	2.25
Asturias, Principado de	190	183	7	388	379	9	2.04
Balears, Illes	-	-	-	-	-	-	-
Canarias	2,970	674	2,296	9,346	1,610	7,735	3.15
Cantabria	1,461	1,392	70	2,821	2,685	136	1.93
Castilla y León	4,013	3,663	350	9,811	8,904	906	2.44
Castilla - La Mancha	1,561	1,471	90	3,035	2,938	97	1.94
Cataluña	20,567	13,163	7,404	59,599	36,731	22,868	2.90
Comunitat Valenciana	5,500	2,566	2,934	14,859	5,064	9,795	2.70
Extremadura	256	249	7	456	449	7	1.78
Galicia	-	-	-	-	-	-	-
Madrid, Comunidad de	4,725	2,028	2,697	8,971	3,218	5,754	1.90
Murcia, Región de	1,268	1,015	253	2,496	1,799	697	1.97
Navarra, Comunidad Foral de	1,024	939	85	4,727	4,539	188	4.62
País Vasco	3,896	3,365	531	8,116	7,269	847	2.08
Rioja, La	538	538	0	974	974	0	1.81
Ceuta	-	-	-	-	-	-	-
Melilla	-	-	-	-	-	-	-
Annual rate	0.35	1.23	-1.57	-2.47	1.37	-9.68	-2.81
Cumulative annual rate	-0.64	-0.58	-0.76	-5.72	-5.55	-6.03	-5.11

2. Open establishments, capacity, occupancy and number of staff by autonomous cities and communities

Autonomous cities and communities	Capacity		Occupancy rate		Employed personnel
	Estimated open establishments	Estimated bed-places	Of bed-places	Of bed-places at weekend	
TOTAL	208	21,756	26.68	31.80	1,535
Andalucía	12	2,729	40.01	49.60	171
Aragón	19	1,714	17.96	24.10	75
Asturias, Principado de	4	321	4.17	8.13	44
Balears, Illes	-	-	-	-	-
Canarias	27	609	52.91	54.31	53
Cantabria	7	464	20.99	24.29	29
Castilla y León	21	1,708	19.80	18.50	216
Castilla - La Mancha	19	2,144	4.88	8.96	65
Cataluña	36	5,175	39.71	46.15	401
Comunitat Valenciana	11	1,957	26.18	33.47	109
Extremadura	7	515	3.06	7.76	30
Galicia	-	-	-	-	-
Madrid, Comunidad de	5	498	62.12	73.53	120
Murcia, Región de	5	489	17.60	40.58	19
Navarra, Comunidad Foral de	6	450	36.19	13.94	45
País Vasco	17	1,917	14.60	14.48	107
Rioja, La	6	286	11.73	26.39	11
Ceuta	-	-	-	-	-
Melilla	-	-	-	-	-
Annual rate	-6.12	-3.93	-1.98	-6.04	-2.64
Cumulative annual rate	-4.03	-2.78	-4.88	-4.90	-2.14

3. Travellers and overnight stays by countries of residence

Countries	Travellers		Overnight stays		Average stay
	Total	%	Total	%	
TOTAL	62,011	100.00	168,330	100.00	2.71
Residents in Spain	42,936	69.24	114,125	67.80	2.66
Residents abroad	19,074	30.76	54,205	32.20	2.84
TOTAL residents abroad	19,074	100.00	54,205	100.00	2.84
TOTAL Residents in EU-27 ¹ (without Spain)	9,462	49.60	25,460	46.97	2.69
- Germany	1,708	8.95	4,183	7.72	2.45
- Belgium	371	1.95	1,095	2.02	2.95
- France	3,364	17.64	9,508	17.54	2.83
- Italy	1,117	5.86	3,646	6.73	3.26
- Netherlands	755	3.96	2,089	3.85	2.77
- Portugal	473	2.48	936	1.73	1.98
United Kingdom	1,285	6.74	3,466	6.39	2.70
Switzerland	281	1.47	637	1.17	2.27
Other European countries	2,962	15.53	6,733	12.42	2.27
United States of America	1,731	9.07	3,620	6.68	2.09
Other countries	5,028	26.36	18,292	33.75	3.64

¹ Since 31 January 2020, The United Kingdom is no longer part of the E.U., hence the aggregate UE-27 is published.

HOLIDAY DWELLING PRICE INDEX (HDPI)

February 2020

Provisional data

1st April 2020

National general index and breakdown by rates

	Index	Annual variation rate
TOTAL	137.78	1.67
Normal	126.68	-2.45
Weekend	127.94	1.81
Tour-operators and travel agencies	146.90	4.08

National general index and breakdown by modalities

	Index	Annual variation rate
TOTAL	137.78	1.67
Studio	138.14	2.92
Dwellings 2/4 bedplaces	138.49	2.21
Dwellings 4/6 bedplaces	135.85	-1.14

Tourist Campsite Price Index (TCSPI). 2002 Base

February 2020

Provisional data

1st April 2020

National general index and breakdown by rates

	Index	Annual variation rate
TOTAL	155.37	1.98
Normal rate	151.91	2.93
Special rate for stays up to one month	141.38	0.21
Special rate for stays longer than one month	160.45	2.12
Bungalow rate ¹	106.29	1.48

¹2014 Base

National general index and breakdown by categories

	Index	Annual variation rate
TOTAL	155.37	1.98
Luxury and first	167.36	2.74
Second	147.77	1.43
Third	155.21	-1.34

TCSPI (ANNEX OF TABLES) - February 2020. Provisional data

Rural Tourism Accommodation Price Index (RTAPI)

February

Provisional data

1st April 2020

General Autonomous Cities and Communities and national indices

	Index	Annual variation rate
TOTAL	141.85	0.62
Andalucía	148.06	1.99
Aragón	162.48	2.86
Asturias, Principado de	157.52	4.47
Balears, Illes	112.68	-4.58
Canarias	118.70	1.34
Cantabria	167.77	-0.05
Castilla y León	159.13	2.99
Castilla - La Mancha	132.41	-2.99
Cataluña	149.05	4.20
Comunitat Valenciana	153.53	1.24
Extremadura	102.08	-4.84
Galicia	151.80	0.91
Madrid, Comunidad de	136.52	-5.63
Murcia, Región de	145.72	2.59
Navarra, Comunidad Foral de	165.28	1.55
País Vasco	168.91	2.23
Rioja, La	151.28	3.66
Ceuta	-	-
Melilla	-	-

National general index and breakdown by rates

	Index	Annual variation rate
TOTAL	141.85	0.62
Normal	138.80	0.38
Weekend	138.92	0.71

National general index and breakdown by rent modality

	Index	Annual variation rate
TOTAL	141.85	0.62
Shared use (in case of per room rent modality)	120.46	-1.41
Full use (rent of entire dwelling)	152.86	1.30