

**Non-Hotel Tourist Accommodation Occupancy Survey
March 2008. Provisional data**

**Overnight stays in collective non-hotel accommodation increase
16.5% in March, as compared to the same month in 2007**

Overnight stays in non-hotel tourist accommodation (holiday dwellings, campsites and rural tourism establishments) surpassed 7.3 million in March, 16.5% more than in the same month of the previous year. Worth noting was that, while overnight stays of residents increased 83.0%, those of non-residents decreased 1.4%.

Granted that **Easter week** took place in March this year, and in April the previous year, it is appropriate to wait until the results from the month of April are available to analyse the two months together.

During the first quarter of the year, overnight stays increased 7.2% as compared with the same period of the previous year.

Travellers and overnight stays in collective non-hotel tourist accommodation in March were:

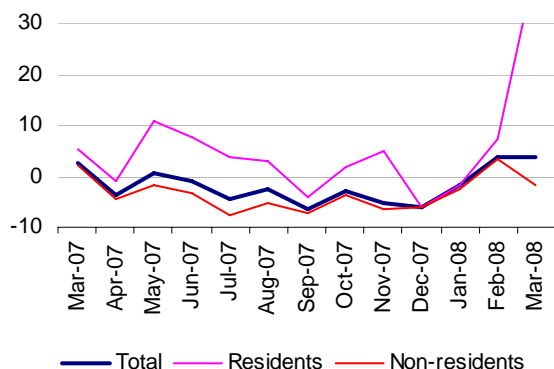
March 2008	Travellers	Overnight stays
Residents in Spain	691,176	2,441,135
EU (not including Spain)	482,391	4,278,778
Rest of the world	63,258	601,053
TOTAL	1,236,825	7,320,966

Overnight stays in holiday dwellings increase 3.7% in March

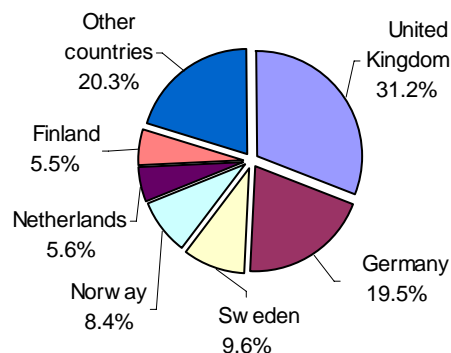
Overnight stays in holiday dwellings reached almost five million in March, representing a 3.7% interannual increase. Resident overnight stays increased by 41.5% in the interannual rate, while non-resident overnight stays decreased by 1.9% as compared with March 2007.

Available holiday dwellings increased 3.5%, reaching 376,135 bedplaces. In March, 42.4% of the total available bedplaces were occupied, 0.1% less than in the same month of the previous year. On the other hand, 63.7% out of the total number of available holiday dwellings were occupied, 2.5% less.

Interannual rates of overnight stays in %



Overnight stays of foreign travellers by country of origin in %



Non-resident overnight stays in holiday dwellings represented 82.5% of the total. **The United Kingdom was the main country of origin**, with over 1.2 million overnight stays, 1.8% less than in March of last year.

The next country of origin was Germany, with almost 801,000 overnight stays and an interannual rate of -11.7%.

Canarias was the preferred holiday dwelling destination, with more than 3.6 million overnight stays, 2.5% less than in March 2007. Comunitat Valenciana was the second destination of choice, with 436,485 overnight stays, for an increase of 26.7%.

Among non-residents, Canarias, Andalucía and Comunitat Valenciana were the preferred destinations. On the other hand, the destinations with the most overnight stays by resident travellers were Canarias, Comunitat Valenciana and Andalucía.

Canarias presented the **highest occupancy rate**, with 77.0% of available holiday dwellings occupied. It was followed by Comunidad de Madrid (69.5%) and Illes Balears (60.9%).

By **tourist areas**, the island of Gran Canaria was the preferred destination in this accommodation modality, with over 1.4 million overnight stays in March and an occupancy rate of 82.7%.

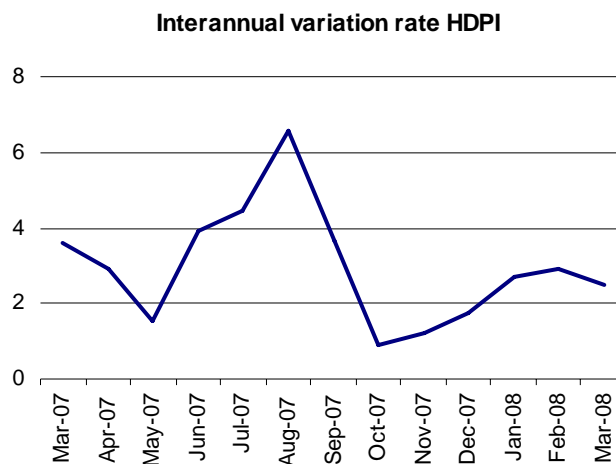
The tourist sites with the greatest number of overnight stays were San Bartolomé de Tirajana, Mogán and Tías.

Prices for holiday dwellings increase 2.5% in March

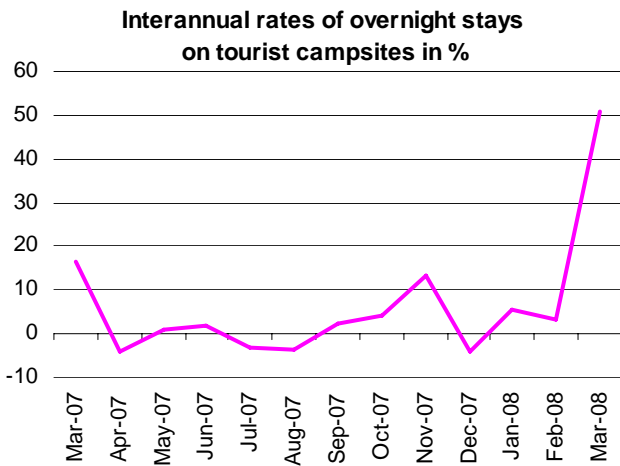
The Holiday Dwelling Price Index registered a 2.5% increase in March, a rate 0.4 points lower than that for the previous month.

The *tour-operator and travel agency* rate, which carried the greatest weighting in the weight structure for this month (63.5%), registered a 1.6% interannual rate increase.

By modality, 2/4 bedplace holiday dwellings, whose weighting was 69.0%, increased their prices 1.4%, as compared to March 2007.



Overnight stays on tourist campsites increase 50.8%



Overnight stays on tourist campsites exceeded 1.5 million in March, representing a 50.8% interannual rate increase. Overnight stays by resident travellers increased 140.7%, and those by non-resident travellers increased 0.7%.

Tourist campsites offered almost 375,600 bedplaces, 15.0% more than in the same month of 2007. 37.6% of the available lots were occupied, for a 6.6% increase in the interannual rate. The weekend occupancy rate by lot reached 30.7%, that is, 16.1% less than in March 2007.

42.9% of overnight stays in holiday campsites were by non-residents. **The United Kingdom was the main country of origin** with 36.6% of overnight stays by non-residents (4.9% more). The following country of origin was Germany.

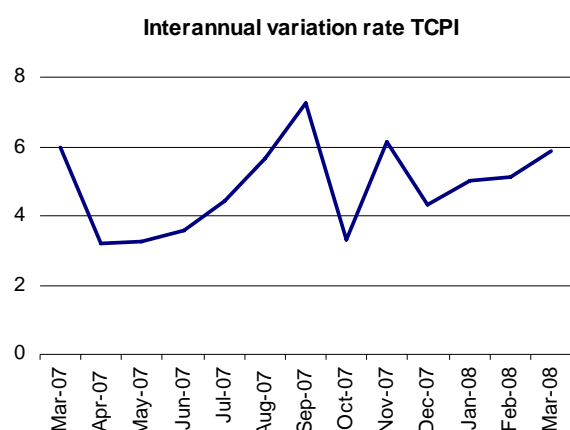
Comunitat Valenciana was the preferred destination for camping, with 492,920 overnight stays, 28.9% more than in March 2007. Cataluña was the second destination of choice, with nearly 420,170 overnight stays, for an increase of 83.6%.

Among non-residents, Comunitat Valenciana, Andalucía and Región de Murcia were the preferred destinations. On the other hand, Cataluña, Comunitat Valenciana and Andalucía were the destinations with the most overnight stays by resident travellers.

In March, **the highest campsite occupancy rate** was registered in **Comunitat Valenciana**, with 60.8% of the available lots occupied. It was followed by La Rioja (58.1%) and Región de Murcia (53.8%).

On a **tourist area basis**, Costa Blanca was the preferred destination for camping, with almost 260,000 overnight stays in March and an occupancy rate of 72.7%. The **tourist sites** with the most overnight stays were Benidorm, Cartagena and Oliva.

Prices of tourist campsites increase 5.9%



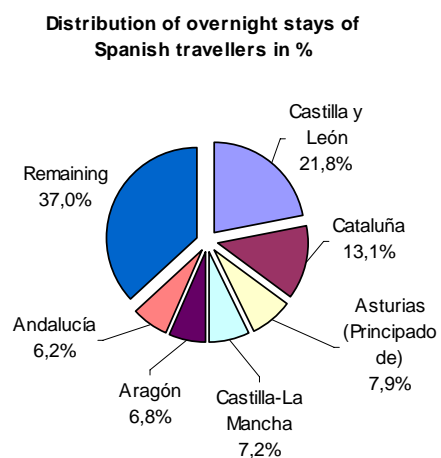
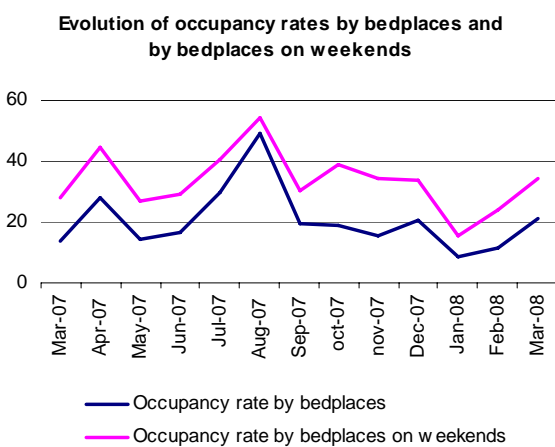
The Tourist Campsite Price Index interannual growth rate increased 5.9% in March. The *normal* rate, which had the greatest weight in the weight structure for this month (53.7%), increased 6.4%.

Regarding categories, second class, with a 65.6% weighting in March, recorded an interannual increase of 7.2%.

Overnight stays by residents in rural tourism accommodation increase 92.3% in March, as compared to the same month of the previous year

There were more than 751,670 overnight stays in rural tourism accommodation in March, indicating a 75.5% increase with regard to the same month of the previous year. Overnight stays by residents increased 92.3%, and non-resident stays increased 5.8%.

Rural tourism, accommodation offered 112,906 bedplaces in March, 11.5% more than in March 2007. Of these bedplaces, 21.3% were occupied, representing a 56.5% increase. The weekend occupancy rate stood at 34.5%, 23.7% more than in March of the previous year.



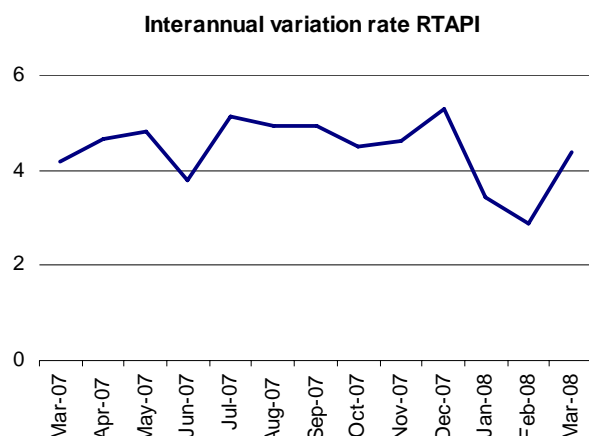
Castilla y León was the preferred destination in rural tourism accommodation, with 148,264 overnight stays, 73.9% more than in March 2007. Cataluña was the second destination of choice, with approximately 88,845 overnight stays (87.7% more).

Among non-residents, Canarias and Illes Balears were the preferred destination. On the other hand, the destinations with the most overnight stays by resident travellers were Castilla y León, Cataluña and Asturias.

Canarias reached the highest occupancy rate in rural tourism accommodation in March, with 35.0% of the available bedplaces. It was followed by Illes Balears (31.7%) and País Vasco (27.4%).

On a **tourist area basis**, Pirineo Catalán was the preferred destination, with approximately 42,850 overnight stays, while Parque Nacional del Teide registered the highest occupancy rate, with 41.0%.

Rural tourism accommodation prices increase 4.4%



The Rural Tourism Accommodation Price Index showed an interannual growth of 4.4% in March. The *normal* rate, which had the greatest weighting in the weight structure for this month (60.1%), increased 4.5%.

By rent modality, complete use, with a weighting of 67.9%, recorded an interannual increase of 4.4%.

Annex

Evolution of travellers and overnight stays in all Spanish collective tourist accommodation

Overnight stays in all Spanish collective tourist accommodations (hotels, holiday dwellings, campsites and rural tourism accommodation) **registered an 11.8% interannual increase in March**. Resident overnight stays increased 26.1%, and non-resident overnight stays increased 2.2%.

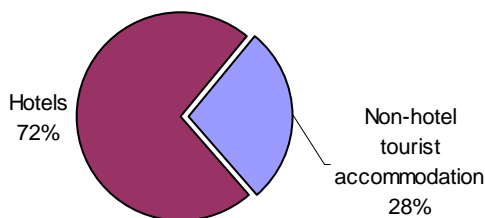
The average stay increased 1.7%, standing at 3.4 nights per traveller.

Travellers and overnight stays in collective tourist accommodation were:

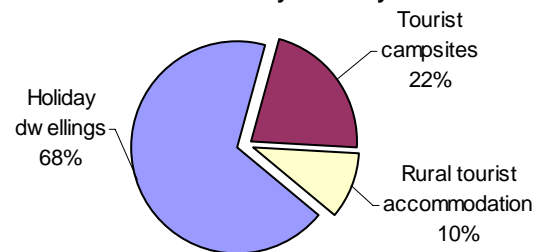
March 2008	Hotels	Holiday dwellings	Campsites	Rural T.	Total
Travellers	6,607,370	654,250	341,586	240,990	7,844,196
Residents	4,094,147	186,922	278,642	225,612	4,785,323
Non-residents	2,513,223	467,328	62,943	15,378	3,058,872
Overnight stays	19,179,709	4,988,886	1,580,401	751,678	26,500,674
Residents	9,507,492	875,675	902,477	662,983	11,948,627
Non-residents	9,672,217	4,113,212	677,924	88,695	14,552,048

Of the total overnight stays in collective tourist accommodation in March, 72% were accounted for at hotels, and 28% were at non-hotel tourist accommodation.

Distribution of overnight stays in tourist accommodation in %



Distribution of overnight stays of non-hotel tourist accommodation by modality in %



The **main countries of origin** in overall regulated tourist accommodation were Germany with 27.3% of the total number of non-resident overnight stays, United Kingdom with 24.8%, and the Netherlands with 4.5%.

Canarias was the **preferred destination** regarding overall Spanish tourist accommodation, with more than eight million overnight stays, 1.6% more than in March 2007. It was followed by Andalucía, with approximately 4.3 million overnight stays (13.7% more) and Cataluña, with more than 3.2 million overnight stays (24.8% more).

The preferred destinations of non-residents were Canarias, Andalucía and Cataluña. On the other hand, Andalucía, Cataluña and Comunitat Valenciana were the destinations with the most overnight stays by residents.

For further information see INEbase-www.ine.es/en/welcome_en.htm All press releases at: www.ine.es/en/prensa/prensa_en.htm

Press office: Telephone: 91 583 93 63 / 94 08 – Fax: 91 583 90 87 - gprensa@ine.es

Information area: Telephone: 91 583 91 00 – Fax: 91 583 91 58 – www.ine.es/infoine

Tourist Accommodation Occupancy Survey Campsite Occupancy Survey (COS)

March 2008

Provisional data

1. Travellers, overnight stays and average stay by category of establishment

Category	Number of travellers			Number of overnight stays			Average stay
	Total	Residents in Spain	Residents abroad	Total	Residents in Spain	Residents abroad	
TOTAL	341,586	278,642	62,943	1,580,401	902,477	677,924	4.63
Luxury and first-class	136,807	106,090	30,717	635,129	334,982	300,147	4.64
Second-class	172,489	143,114	29,374	855,030	489,244	365,786	4.96
Third-class	32,290	29,439	2,852	90,242	78,251	11,992	2.79
Interannual rate	53.47	76.42	-2.61	50.77	140.73	0.68	-1.77
Cumulative interannual rate	29.48	42.93	-1.73	22.63	76.20	2.45	-5.29

2. Open establishments, capacity, occupancy and number of staff by category of establishments

Category	Estimated open establishments	Capacity		Occupied pitches	Occupancy rate per pitch	Weekend occupancy rate	Employed personnel
		Estimated bedplaces	Estimated pitches				
TOTAL	568	375,596	113,360	1,321,673	37.61	30.68	3,925
Luxury and first-class	141	142,089	42,032	463,286	35.56	27.41	1,605
Second-class	337	204,382	61,583	756,540	39.63	33.88	2,031
Third-class	90	29,124	9,745	101,847	33.71	25.77	290
Interannual rate	16.48	14.97	13.96	21.53	6.64	-16.07	20.02
Cumulative interannual rate	6.79	4.60	5.51	9.69	2.61	-15.91	9.57

3. Travellers, overnight stays and average stay by autonomous communities

Autonomous Communities	Number of travellers			Number of overnight stays			Average stay
	Total	Residents in Spain	Residents abroad	Total	Residents in Spain	Residents abroad	
TOTAL	341,586	278,642	62,943	1,580,401	902,477	677,924	4.63
Andalucía	63,175	42,394	20,782	274,791	147,458	127,333	4.35
Aragón	16,263	14,967	1,296	49,854	44,942	4,913	3.07
Asturias (P. de)	4,025	3,824	201	10,681	9,691	990	2.65
Balears (Illes)*	-	-	-	-	-	-	-
Canarias*	-	-	-	-	-	-	-
Cantabria	7,299	6,769	530	21,028	20,269	760	2.88
Castilla y León	7,796	4,879	2,917	16,779	12,350	4,429	2.15
Castilla-La Mancha	6,012	5,259	753	16,654	15,366	1,288	2.77
Cataluña	124,926	113,915	11,011	420,169	339,327	80,842	3.36
Comunitat Valenciana	55,591	40,499	15,092	492,920	164,355	328,564	8.87
Extremadura	9,071	7,923	1,148	25,165	22,492	2,673	2.77
Galicia	2,050	1,445	605	6,812	5,726	1,086	3.32
Madrid (C. de)	15,282	13,544	1,738	46,355	40,930	5,425	3.03
Murcia (Región de)	11,496	7,681	3,815	136,658	30,029	106,630	11.89
Navarra (C. Foral de)	3,488	3,124	364	11,416	10,765	651	3.27
País Vasco	4,207	2,724	1,483	9,730	7,349	2,381	2.31
Rioja (La)	8,859	8,269	590	27,360	26,242	1,118	3.09
Ceuta y Melilla	-	-	-	-	-	-	-

* The size of the sample in these communities does not facilitate the INE the broken down results, with the objective of maintaining statistical secrecy. Nevertheless, the data corresponding to these communities are included in the national total.

4. Open establishments, capacity, occupancy and number of staff by autonomous community

Autonomous Communities	Estimated open establishments	Capacity		Occupied pitches	Occupancy rate per pitch	Weekend occupancy rate	Employed personnel
		Estimated bedplaces	Estimated pitches				
TOTAL	568	375,596	113,360	1,321,673	37.61	30.68	3,925
Andalucía	110	67,497	21,824	165,713	24.49	19.63	798
Aragón	49	19,001	6,302	53,096	27.18	23.57	227
Asturias (P. de)	17	8,546	2,646	13,698	16.70	10.52	60
Balears (Illes)*	-	-	-	-	-	-	-
Canarias*	-	-	-	-	-	-	-
Cantabria	16	11,974	3,805	49,841	42.26	16.74	71
Castilla y León	36	13,400	3,704	24,883	21.67	18.63	91
Castilla-La Mancha	13	5,676	1,571	12,747	26.17	28.23	51
Cataluña	122	119,010	33,952	391,760	37.22	34.41	1,117
Comunitat Valenciana	94	61,177	18,411	347,191	60.83	49.76	783
Extremadura	15	5,234	1,679	16,889	32.44	22.49	85
Galicia	22	7,410	2,264	5,733	8.17	5.25	44
Madrid (C. de)	19	17,466	5,771	82,000	45.83	37.45	178
Murcia (Región de)	20	15,254	4,503	75,072	53.77	31.98	192
Navarra (C. Foral de)	11	7,350	1,960	18,504	30.45	18.67	67
País Vasco	14	7,898	2,239	19,037	27.43	25.18	65
Rioja (La)	7	6,218	2,038	36,727	58.14	44.00	48
Ceuta y Melilla	-	-	-	-	-	-	-

5. Travellers and overnight stays, average stay, capacity, occupancy and number of staff by provinces with the greatest number of overnight stays**

Provinces	Travellers		Overnight stays		Average stay	Estimated open establishments	Estimated pitches	Occupancy rate per pitch	Employed personnel
	Residents in Spain	Residents abroad	Residents in Spain	Residents abroad					
	Alicante/Alacant	9,878	5,699	48,649					
Tarragona	30,441	3,287	128,403	17,355	4.32	36	14,259	26.91	442
Barcelona	43,307	3,308	93,187	39,344	2.84	28	7,021	61.05	256
Castellón/Castelló	14,085	5,744	58,476	66,587	6.31	34	5,837	48.05	208
Girona	28,552	4,275	84,999	23,711	3.31	35	9,197	32.19	354
Valencia/València	16,537	3,649	57,230	40,071	4.82	27	4,767	56.65	228
Málaga	4,961	4,416	18,728	48,773	7.20	23	3,907	39.17	161
Huelva	9,090	1,473	44,726	6,785	4.88	11	5,875	17.37	143
Almería	4,785	1,334	16,814	26,561	7.09	17	2,408	31.93	99
Huesca	11,808	730	35,652	2,488	3.04	34	5,010	28.02	183
Lleida	11,616	142	32,738	432	2.82	23	3,475	44.71	64
Cádiz	7,458	2,824	19,800	12,328	3.12	14	2,799	21.29	129
Granada	4,693	5,494	12,538	19,432	3.14	23	2,548	26.11	102
Córdoba	4,160	2,812	11,838	6,402	2.62	6	1,820	12.99	42
Jaén	3,935	889	14,227	2,241	3.41	8	1,337	20.19	48

* The size of the sample in these communities does not facilitate the INE the broken down results, with the objective of maintaining statistical secrecy. Nevertheless, the data corresponding to these communities are included in the national total.

** Provinces belonging to uniprovincial Autonomous Communities have not been included because they are reflected in previous tables.

6. Travellers, overnight stays, average stay, open establishments, capacity, occupancy and number of staff from tourist areas with the greatest number of overnight stays

Tourist areas	Number of travellers		Number of overnight stays		Average stay	Estimated open establishments	Estimated pitches	Occupancy rate per pitch	Employed personnel
	Residents in Spain	Residents abroad	Residents in Spain	Residents abroad					
Costa Blanca	9,468	5,409	48,023	211,936	17.47	29	7,387	72.72	331
Costa Daurada	30,441	3,287	128,403	17,355	4.32	36	14,259	26.91	442
Costa Cálida	3,529	3,049	14,058	95,918	16.72	10	3,566	53.77	130
Pirineo Catalán	31,541	177	86,918	608	2.76	46	6,470	54.18	168
Costa Azahar	8,804	5,169	36,451	50,560	6.23	24	4,410	48.18	158
Costa Brava	18,318	4,248	50,273	23,559	3.27	20	7,176	26.28	292
Costa Valencia	6,073	2,668	29,182	33,107	7.13	8	1,837	53.08	113
Costa del Sol	3,520	3,169	15,215	46,109	9.17	13	3,280	42.72	130
Costa del Garraf	13,501	2,225	22,653	35,483	3.70	5	2,868	60.84	122
Costa de la Luz (Huelva)	8,422	1,400	43,532	6,670	5.11	9	5,741	16.25	137
Costa del Maresme	13,997	1,067	36,801	3,809	2.70	8	2,330	53.80	66
Costa de Almería	4,222	1,183	15,129	22,407	6.94	12	2,056	34.18	71
Pirineo Aragonés	11,378	613	35,056	2,339	3.12	32	4,867	28.46	175
P. N. Doñana	4,014	1,417	22,702	4,200	4.95	5	3,715	9.08	80
Costa de la Luz (Cádiz)	5,261	1,924	15,415	10,649	3.63	9	2,317	17.19	94

7. Travellers, overnight stays, average stay, open establishments, capacity, occupancy and number of staff from tourist sites with the greatest number at overnights stays

Tourist sites	Number of guests		Number of overnight stays		Average stay	Estimated open establishments	Estimated pitches	Occupancy rate per pitch	Employed personnel
	Residents in Spain	Residents abroad	Residents in Spain	Residents abroad					
Benidorm	2,157	1,726	10,713	114,656	31.00	10	3,618	80.07	128
Cartagena	405	2,509	2,772	59,642	21.42	3	2,144	47.17	74
Oliva	3,174	2,083	14,359	29,684	8.38	6	1,392	52.10	87
Mazarrón	1,702	460	4,588	33,293	17.52	3	871	69.59	35
Benicasim/Benicassim	755	2,339	3,973	26,138	9.73	5	1,023	48.27	59
Marbella	638	2,222	5,232	22,323	9.63	3	1,269	54.63	66
Peñíscola	2,153	1,686	10,122	12,232	5.82	6	1,124	53.23	30
Mont-roig del Camp	3,576	714	17,892	3,056	4.88	3	2,692	12.03	91
Cambrils	4,907	642	16,349	3,308	3.54	6	2,649	31.17	58
Vélez-Málaga	1,324	300	7,518	10,486	11.09	4	805	44.77	29
Blanes	4,155	39	12,356	161	2.98	3	615	60.83	19
Campello (El)	771	707	5,354	5,661	7.45	3	300	63.41	20

8. Percentage distribution of Spanish travellers by Autonomous Community of origin

Origin	Total	Andalucía	Aragón	Asturias (P. de)	Balears (Illes)	Canarias	Cantabria	Castilla y León	Castilla-La Mancha	Cataluña
TOTAL	100.00	9.60	2.24	1.50	0.13	0.63	0.82	2.06	1.75	42.60
Andalucía	100.00	58.06	0.51	0.50	0.29	0.25	0.15	1.75	1.93	4.32
Aragón	100.00	0.52	30.97	0.02	0.16	1.01	0.20	1.87	1.17	28.60
Asturias (P. de)	100.00	0.10	0.20	79.41	0.59	0.20	1.01	3.62	0.10	0.97
Balears (Illes)*	-	-	-	-	-	-	-	-	-	-
Canarias*	-	-	-	-	-	-	-	-	-	-
Cantabria	100.00	-	0.12	-	-	-	23.29	3.83	0.93	-
Castilla y León	100.00	2.10	2.17	12.33	-	-	3.19	26.87	1.69	2.21
Castilla-La Mancha	100.00	4.73	0.98	0.52	0.16	-	0.29	1.05	23.56	3.77
Cataluña	100.00	0.05	0.44	-	0.05	0.01	0.06	0.08	0.12	95.39
Comunitat Valenciana	100.00	0.53	1.40	0.27	0.10	0.04	0.27	0.67	3.12	5.23
Extremadura	100.00	2.87	0.29	0.23	0.63	-	1.06	28.18	9.18	3.18
Galicia	100.00	-	-	1.37	-	0.46	-	6.48	-	1.82
Madrid (C. de)	100.00	1.14	-	0.79	0.15	0.11	0.18	0.44	0.85	0.78
Murcia (Región de)	100.00	5.66	0.42	0.19	-	0.56	0.19	1.03	2.98	3.53
Navarra (C. Foral de)	100.00	0.78	2.36	-	0.65	-	3.14	-	0.52	9.91
País Vasco	100.00	4.90	0.12	0.82	-	-	0.41	1.95	0.21	23.21
Rioja (La)	100.00	0.09	0.31	0.13	-	-	-	0.77	-	2.38
Ceuta y Melilla	-	-	-	-	-	-	-	-	-	-

(conclusion)

Origin	Comunitat Valenciana	Extrema-dura	Galicia	Madrid (C. de)	Murcia (Región de)	Navarra (C. Foral de)	Pais Vasco	Rioja (La)	Ceuta y Melilla
TOTAL	16.33	1.01	0.92	8.90	2.04	1.00	7.95	0.49	0.04
Andalucía	11.27	1.58	0.90	7.82	4.72	0.56	5.24	0.05	0.11
Aragón	11.06	-	1.16	6.53	0.24	4.14	11.66	0.71	-
Asturias (P. de)	0.69	0.39	5.16	3.58	-	0.41	3.59	-	-
Balears (Illes)*	-	-	-	-	-	-	-	-	-
Canarias*	-	-	-	-	-	-	-	-	-
Cantabria	-	-	-	2.79	-	-	68.82	0.23	-
Castilla y León	2.32	0.26	1.96	30.54	0.14	2.51	9.43	2.28	-
Castilla-La Mancha	23.89	3.13	1.13	23.54	7.11	0.56	5.38	0.22	-
Cataluña	2.32	-	0.07	0.25	0.01	0.60	0.50	0.05	-
Comunitat Valenciana	76.33	0.19	0.24	7.11	1.20	0.29	2.44	0.50	0.07
Extremadura	4.03	23.14	2.28	14.72	1.36	0.95	7.14	0.74	-
Galicia	20.95	-	54.04	1.86	-	-	11.58	1.45	-
Madrid (C. de)	1.51	0.25	1.99	90.41	0.15	0.28	0.85	0.11	-
Murcia (Región de)	41.09	0.09	0.47	8.14	33.21	0.65	1.59	0.19	-
Navarra (C. Foral de)	0.52	-	4.84	2.50	1.96	21.71	50.05	1.05	-
País Vasco	4.36	-	1.57	3.15	0.12	2.90	55.11	1.18	-
Rioja (La)	0.53	-	0.19	0.85	-	0.68	85.68	8.07	0.31
Ceuta y Melilla	-	-	-	-	-	-	-	-	-

* The size of the sample in these communities does not facilitate the INE the broken down results, with the objective of maintaining statistical secrecy. Nevertheless, the data corresponding to these communities are included in the national total.

9. Percentage distribution of overnight stays of Spanish travellers by Autonomous Community of origin

Destination \ Origin	Total	Andalucía	Aragón	Asturias (P. de)	Balears (Illes)	Canarias	Cantabria	Castilla y León	Castilla-La Mancha	Cataluña
TOTAL	100.00	11.03	2.17	1.23	0.11	0.71	0.62	1.76	1.77	37.92
Andalucía	100.00	63.68	0.40	0.43	0.14	0.31	0.22	1.43	1.98	3.29
Aragón	100.00	0.45	27.04	0.01	0.31	0.96	0.30	1.93	1.11	27.94
Asturias (P. de)	100.00	0.04	0.30	75.83	0.64	0.08	1.47	3.13	0.04	0.93
Balears (Illes)*	-	-	-	-	-	-	-	-	-	-
Canarias*	-	-	-	-	-	-	-	-	-	-
Cantabria	100.00	-	0.11	0.27	-	-	16.49	5.97	1.22	-
Castilla y León	100.00	2.69	1.66	16.45	-	-	3.29	24.39	2.74	1.52
Castilla-La Mancha	100.00	3.29	0.57	0.85	0.16	-	0.23	0.75	26.17	2.96
Cataluña	100.00	0.03	0.83	-	0.05	-	0.07	0.08	0.06	92.15
Comunitat Valenciana	100.00	0.77	1.96	0.23	0.09	0.08	0.17	0.98	2.78	4.15
Extremadura	100.00	2.59	0.43	0.28	0.88	-	0.90	24.24	7.04	2.36
Galicia	100.00	-	-	0.61	-	3.64	-	2.83	-	1.05
Madrid (C. de)	100.00	1.07	-	0.34	0.10	0.05	0.22	0.19	1.21	0.72
Murcia (Región de)	100.00	5.98	0.39	0.53	-	0.19	0.20	1.26	3.37	3.19
Navarra (C. Foral de)	100.00	0.72	1.49	-	0.26	-	3.22	-	0.48	7.90
País Vasco	100.00	2.73	0.22	0.92	-	-	0.23	1.57	0.23	19.43
Rioja (La)	100.00	0.22	0.20	0.14	-	-	-	0.82	-	1.57
Ceuta y Melilla	-	-	-	-	-	-	-	-	-	-

(conclusion)

Destination \ Origin	Comunitat Valenciana	Extremadura	Galicia	Madrid (C. de)	Murcia (Región de)	Navarra (C. Foral de)	País Vasco	Rioja (La)	Ceuta y Melilla
TOTAL	20.21	1.11	0.87	8.72	2.24	1.05	7.97	0.47	0.04
Andalucía	9.74	1.39	0.86	7.04	4.14	0.49	4.30	0.08	0.08
Aragón	12.19	-	1.39	6.14	0.23	3.65	15.78	0.59	-
Asturias (P. de)	1.43	0.17	4.88	5.12	-	0.39	5.54	-	-
Balears (Illes)*	-	-	-	-	-	-	-	-	-
Canarias*	-	-	-	-	-	-	-	-	-
Cantabria	-	-	-	2.59	-	0.95	72.24	0.15	-
Castilla y León	2.45	0.28	1.95	29.64	0.05	1.77	7.71	3.41	-
Castilla-La Mancha	26.76	3.57	0.95	23.76	5.43	0.49	3.88	0.16	-
Cataluña	5.06	0.01	0.08	0.28	0.02	0.67	0.57	0.04	-
Comunitat Valenciana	76.14	0.18	0.27	7.72	1.01	0.51	2.36	0.49	0.11
Extremadura	4.75	31.35	1.39	13.68	1.72	0.71	6.74	0.93	-
Galicia	41.79	-	40.63	1.18	-	-	7.54	0.72	-
Madrid (C. de)	1.31	0.09	1.95	91.40	0.11	0.34	0.76	0.11	-
Murcia (Región de)	37.55	0.03	0.64	7.75	36.14	1.10	1.55	0.05	0.10
Navarra (C. Foral de)	0.64	-	5.29	4.16	1.51	24.13	49.24	0.96	-
País Vasco	3.06	-	1.73	2.07	0.09	2.09	64.05	1.58	-
Rioja (La)	0.26	-	0.15	0.51	-	0.52	88.35	7.18	0.09
Ceuta y Melilla	-	-	-	-	-	-	-	-	-

* The size of the sample in these communities does not facilitate the INE the broken down results, with the objective of maintaining statistical secrecy. Nevertheless, the data corresponding to these communities are included in the national total.

10. Travellers and overnight stays by countries of residence

Countries	Travellers		Overnight stays	
	Total	%	Total	%
TOTAL	341,586	100.00	1,580,401	100.00
Residents in Spain	278,642	81.57	902,477	57.10
Residents abroad	62,943	18.43	677,924	42.90
TOTAL residents abroad	62,943	100.00	677,924	100.00
TOTAL residents in E.U. (excluding Spain)	59,139	93.96	656,014	96.77
- Germany	16,795	26.68	176,660	26.06
- Austria	444	0.70	3,448	0.51
- Belgium	2,719	4.32	24,213	3.57
- Denmark	1,339	2.13	13,709	2.02
- Finland	744	1.18	6,412	0.95
- France	8,523	13.54	38,718	5.71
- Greece	19	0.03	38	0.01
- Ireland	833	1.32	6,334	0.93
- Italy	1,260	2.00	7,417	1.09
- Luxembourg	371	0.59	1,959	0.29
- Netherlands	8,689	13.80	103,194	15.22
- Poland	438	0.70	1,597	0.24
- Portugal	1,494	2.37	7,015	1.03
- United Kingdom	14,109	22.42	248,315	36.63
- Czech Republic	130	0.21	4,741	0.70
- Sweden	928	1.47	11,207	1.65
- Other EU countries	302	0.48	1,038	0.15
Other European countries	1,981	3.15	15,795	2.33
United States of America	199	0.32	680	0.10
Rest of America	448	0.71	1,948	0.29
African countries	38	0.06	141	0.02
Other countries	1,138	1.81	3,346	0.49

Tourist Accommodation Occupancy Survey

(Holiday Dwellings)

March 2008

Provisional data

1. Travellers, overnight stays and average stay by Autonomous Communities

Autonomous Communities	Number of travellers			Number of overnight stays			Average stay
	Total	Residents in Spain	Residents abroad	Total	Residents in Spain	Residents abroad	
TOTAL	654,250	186,922	467,328	4,988,886	875,675	4,113,212	7.63
Andalucía	70,837	35,400	35,436	418,392	136,116	282,276	5.91
Aragón	7,092	6,529	563	27,466	24,119	3,347	3.87
Asturias (P. de)	3,116	2,985	130	12,269	11,852	417	3.94
Balears (Illes)	11,051	1,828	9,223	102,818	9,954	92,864	9.30
Canarias	430,864	54,781	376,083	3,621,833	270,225	3,351,607	8.41
Cantabria	4,698	4,492	205	21,647	17,879	3,768	4.61
Castilla y León	1,909	1,802	107	7,262	6,665	597	3.80
Castilla-La Mancha	4,174	4,091	83	13,073	12,386	687	3.13
Cataluña	26,704	17,155	9,549	178,805	125,742	53,063	6.70
C. Valenciana	57,531	30,442	27,089	436,485	166,589	269,897	7.59
Extremadura	1,898	1,875	23	4,368	4,074	295	2.30
Galicia	3,540	3,018	522	12,490	9,754	2,737	3.53
Madrid (C. de)	22,385	15,156	7,228	84,124	46,148	37,976	3.76
Murcia (Región de)	3,965	3,237	727	31,015	20,639	10,376	7.82
Navarra (C. Foral de)	2,489	2,270	219	8,753	7,273	1,480	3.52
País Vasco	1,189	1,049	140	5,603	3,779	1,824	4.71
Rioja (La)	809	809	0	2,484	2,484	0	3.07
Ceuta y Melilla	-	-	-	-	-	-	-
Interannual rate	12.86	42.01	4.30	3.65	41.46	-1.93	-8.16
Cumulative interannual rate	5.81	21.91	1.58	1.89	17.22	-0.23	-3.71

2. Capacity, occupancy and number of staff by autonomous communities

Autonomous Communities	Capacity		Occupancy rate		Employed personnel
	Estimated bedplaces	Estimated Holiday dwellings	Per bedplaces	Per Holiday dwellings	
TOTAL	376,135	106,902	42.41	63.66	23,684
Andalucía	40,904	11,084	33.03	49.49	3,835
Aragón	3,046	703	29.18	35.33	248
Asturias (P. de)	2,882	817	13.99	17.65	213
Balears (Illes)	7,779	2,618	42.60	60.94	574
Canarias	205,282	65,396	56.20	76.89	14,644
Cantabria	3,185	863	21.78	37.68	174
Castilla y León	1,119	283	21.11	38.32	90
Castilla-La Mancha	2,057	512	20.56	26.52	211
Cataluña	25,497	5,671	22.64	34.20	991
C. Valenciana	66,067	13,648	21.34	38.95	1,560
Extremadura	741	191	19.06	27.37	58
Galicia	2,132	559	19.03	31.21	132
Madrid (C. de)	5,294	2,243	50.78	69.46	593
Murcia (Región de)	8,332	1,842	11.98	23.33	189
Navarra (C. Foral de)	860	212	32.80	56.16	96
País Vasco	645	197	27.94	48.83	42
Rioja (La)	313	64	25.86	30.83	34
Ceuta y Melilla	-	-	-	-	-
Interannual rate	3.50	1.87	-0.07	-2.48	3.31
Cumulative interannual rate	0.87	0.29	-0.14	-4.23	0.38

3. Travellers, overnight stays, capacity, occupancy, total number of staff with greater number of overnight stays *

Provinces	Number of travellers		Overnight stays			Capacity		Occupancy rate		Employed personnel
	Residents	Residents	Residents	Residents	Average	Estimated	Estimated	Per	Per	
	in Spain	abroad	in Spain	abroad	stay	bedplaces	holiday dwelling	bedplaces	holiday dwelling	
Las Palmas	35,374	262,423	184,092	2,328,088	8.44	144,028	45,636	55.33	76.71	9,988
Tenerife	19,407	113,660	86,133	1,023,519	8.34	61,254	19,760	58.23	77.32	4,656
Alicante/Alacant	15,803	25,065	85,888	250,031	8.22	46,265	9,852	23.43	43.68	1,140
Málaga	10,786	30,146	48,813	253,237	7.38	24,665	6,676	39.55	58.99	2,851
Barcelona	4,161	5,873	68,206	32,178	10.00	5,385	1,644	60.15	74.93	236
Castellón/Castelló	9,179	873	47,153	9,775	5.66	12,963	2,320	14.17	24.59	134
Girona	7,380	2,652	33,935	14,888	4.87	13,972	2,840	11.30	14.80	492
Valencia/Valencià	5,459	1,152	33,547	10,091	6.60	6,839	1,475	20.73	30.03	286
Granada	8,710	1,656	25,402	7,691	3.19	4,161	1,084	25.67	32.22	289
Almería	4,066	1,095	20,580	12,371	6.38	5,012	1,316	21.26	37.96	183
Huesca	4,290	385	17,544	2,508	4.29	2,042	439	31.98	39.47	173
Lleida	3,564	608	14,938	3,768	4.48	2,343	444	25.66	36.85	144
Sevilla	3,388	1,268	14,212	4,138	3.94	1,521	590	38.55	61.88	105
Cádiz	3,596	931	11,854	4,192	3.54	2,678	720	19.42	25.29	189
Jaén	3,567	51	11,592	231	3.27	1,877	468	20.52	24.49	158

4. Travellers, overnight stays, capacity, occupancy, total number of staff from tourist areas with greater number of overnight stays

Tourist Areas	Number of travellers		Overnight stays			Capacity		Occupancy rate		Employed personnel
	Residents	Residents	Residents	Residents	Average	Estimated	Estimated	Per	Per	
	in Spain	abroad	in Spain	abroad	stay	bedplaces	holiday dwelling	bedplaces	holiday dwelling	
Isla de Gran Canaria	11,602	152,846	56,764	1,366,489	8.65	74,357	23,787	60.43	82.72	4,925
Isla de Tenerife	15,222	105,436	65,212	951,250	8.42	53,626	17,157	60.90	80.15	4,060
Isla de Lanzarote	16,345	84,479	92,207	709,442	7.95	46,051	14,236	55.33	77.85	3,662
Costa Blanca	14,711	24,510	80,367	244,566	8.28	43,104	9,267	24.32	45.08	1,084
Costa del Sol	9,678	29,745	46,251	250,138	7.52	23,778	6,457	40.25	59.99	2,787
Isla de Fuerteventura	7,427	25,098	35,121	252,157	8.83	23,620	7,613	39.30	55.79	1,401
Isla de Mallorca	1,296	9,184	8,264	92,632	9.63	7,564	2,547	43.00	61.39	559
Costa Azahar	9,018	873	46,698	9,775	5.71	12,746	2,267	14.30	24.91	126
La Palma	2,750	4,577	13,427	40,853	7.41	4,158	1,440	42.18	62.12	334
Pirineo Catalán	7,948	1,110	35,457	4,888	4.45	4,563	861	28.48	36.11	265

5. Travellers, overnight stays, capacity, occupancy, total number of staff from tourist sites with greater number at overnights stays

Tourist sites	Number of travellers		Overnight stays			Capacity		Occupancy rate		Employed personnel
	Residents	Residents	Residents	Residents	Average	Estimated	Estimated	Per	Per	
	in Spain	abroad	in Spain	abroad	stay	bedplaces	holiday dwelling	bedplaces	holiday dwelling	
San Bartolomé de Tirajana	8,645	90,169	39,010	871,831	9.22	49,027	15,474	58.48	81.46	3,208
Mogán	1,619	57,690	8,650	440,556	7.57	21,828	6,981	65.17	85.71	1,484
Tias	4,801	49,203	34,872	404,610	8.14	25,541	8,045	54.70	77.72	1,634
Arona	2,241	48,472	9,650	425,496	8.58	22,173	6,930	62.95	80.94	1,515
Adeje	3,971	30,129	16,118	283,687	8.79	16,499	4,857	58.48	82.62	1,384
Teguise	8,621	20,419	32,065	179,130	7.27	11,012	3,588	60.72	79.19	935
Benidorm	6,897	17,408	25,942	158,133	7.57	14,536	3,474	40.85	65.83	478
Puerto de la Cruz	7,523	10,508	34,243	121,561	8.64	7,780	3,308	64.27	77.28	613
Yaiza	2,781	11,039	19,917	94,566	8.28	5,889	1,745	61.24	86.71	657
La Oliva	3,351	10,397	13,538	93,567	7.79	8,044	2,398	42.58	65.10	472

* Provinces belonging to uniprovincial Autonomous Communities have not been included because they are reflected in previous tables.

6. Percentage distribution of Spanish travellers by Autonomous Community of origin

Origin Destination	Total	Andalucía	Aragón	Asturias (P. de)	Balears (Illes)	Canarias	Cantabria	Castilla y León	Castilla-La Mancha	Cataluña
TOTAL	100.00	14.43	2.30	1.39	1.53	14.79	1.09	2.44	2.90	11.88
Andalucía	100.00	47.24	1.78	0.43	0.46	1.12	1.08	1.87	4.01	4.41
Aragón	100.00	0.83	10.51	0.92	-	-	0.30	4.90	4.41	15.75
Asturias (P. de)	100.00	1.49	0.26	10.06	-	-	2.63	5.45	4.36	2.29
Balears (Illes)	100.00	20.86	0.86	1.64	30.79	0.21	-	-	0.77	22.87
Canarias	100.00	8.10	1.87	0.86	2.12	47.37	0.67	0.57	0.59	1.86
Cantabria	100.00	3.45	2.84	3.19	-	1.35	12.78	11.08	1.50	4.23
Castilla y León	100.00	2.59	0.75	5.73	-	-	0.65	5.55	5.26	1.10
Castilla-La Mancha	100.00	2.05	2.26	1.17	-	-	0.23	1.12	16.84	4.05
Cataluña	100.00	3.15	2.45	0.83	2.34	1.07	0.48	1.03	1.86	67.21
Comunitat Valenciana	100.00	5.88	2.14	0.63	0.57	1.14	0.40	3.33	4.12	10.83
Extremadura	100.00	12.17	1.10	1.39	0.41	-	-	4.75	4.98	2.40
Galicia	100.00	1.64	0.66	6.14	0.13	0.13	1.11	4.90	1.43	4.75
Madrid (C. de)	100.00	13.30	3.06	3.38	2.26	3.50	2.06	4.92	2.97	13.23
Murcia (Región de)	100.00	7.77	1.22	3.09	1.17	1.70	0.24	2.37	5.06	6.84
Navarra (C. Foral de)	100.00	6.84	2.22	3.29	0.26	3.98	0.54	5.30	1.36	12.25
País Vasco	100.00	1.88	2.43	4.59	-	0.79	1.12	3.89	2.86	15.83
Rioja (La)	100.00	-	1.68	-	-	1.02	1.96	4.68	1.44	5.84
Ceuta y Melilla	-	-	-	-	-	-	-	-	-	-

(conclusión)

Origin Destination	Comunitat Valenciana	Extrema- dura	Galicia	Madrid (C. de)	Murcia (Región de)	Navarra (C. Foral de)	País Vasco	Rioja (La)	Ceuta y Melilla
TOTAL	11.03	1.22	3.26	21.65	1.89	1.02	6.21	0.62	0.36
Andalucía	9.19	2.46	1.43	16.27	3.75	0.73	2.12	0.94	0.70
Aragón	16.08	0.85	1.82	28.75	0.93	1.07	12.35	0.55	-
Asturias (P. de)	3.98	-	11.53	32.03	0.94	1.49	22.97	0.52	-
Balears (Illes)	1.90	-	0.83	2.63	13.98	-	2.54	0.12	-
Canarias	2.00	0.07	1.24	26.10	0.09	0.27	5.65	0.12	0.45
Cantabria	1.69	0.24	8.84	17.49	0.15	2.88	25.62	2.66	-
Castilla y León	2.58	2.51	34.40	30.87	0.86	0.54	5.84	0.77	-
Castilla-La Mancha	23.07	1.34	5.05	39.19	1.86	0.45	1.00	0.10	0.23
Cataluña	4.25	0.41	1.06	8.19	0.61	1.11	3.28	0.61	0.06
Comunitat Valenciana	32.83	0.26	1.01	28.74	1.67	0.66	5.44	0.36	-
Extremadura	7.65	26.11	2.07	30.39	0.72	2.07	2.84	0.93	-
Galicia	1.81	0.68	50.69	16.70	0.39	0.83	7.76	0.26	-
Madrid (C. de)	13.28	2.87	6.42	13.92	2.89	2.13	7.59	1.26	0.96
Murcia (Región de)	27.16	2.56	1.39	17.46	19.01	0.13	2.35	0.36	0.12
Navarra (C. Foral de)	7.64	1.02	4.00	9.87	1.31	17.49	19.61	3.02	-
País Vasco	1.93	-	1.48	13.38	-	4.14	45.12	0.55	-
Rioja (La)	-	0.48	2.95	38.38	-	0.72	33.97	6.89	-
Ceuta y Melilla	-	-	-	-	-	-	-	-	-

7. Percentage distribution of overnight stays by Autonomous Community of origin

Origin Destination	Total	Andalucía	Aragón	Asturias (P. de)	Balears (Illes)	Canarias	Cantabria	Castilla y León	Castilla-La Mancha	Cataluña
TOTAL	100.00	12.54	2.27	1.90	1.50	14.11	1.39	2.34	2.45	15.83
Andalucía	100.00	42.08	2.79	0.50	0.25	1.48	1.43	1.86	3.31	4.64
Aragón	100.00	0.89	12.41	0.79	-	-	0.32	6.66	3.19	13.66
Asturias (P. de)	100.00	2.21	0.29	17.42	-	-	1.98	4.89	2.96	2.91
Balears (Illes)	100.00	27.38	1.17	2.14	28.98	0.81	-	0.35	1.35	12.78
Canarias	100.00	8.70	2.10	0.58	1.51	42.65	0.38	0.50	0.40	1.96
Cantabria	100.00	1.92	2.10	2.33	0.08	2.00	33.20	10.01	1.03	3.75
Castilla y León	100.00	2.14	1.31	6.73	0.47	-	1.05	19.82	3.34	0.65
Castilla-La Mancha	100.00	2.08	2.17	0.98	-	-	0.15	2.53	16.28	4.41
Cataluña	100.00	2.96	1.19	0.44	2.77	0.85	0.62	0.47	2.07	76.26
Comunitat Valenciana	100.00	8.40	1.68	0.97	0.56	1.43	0.49	3.86	3.92	9.13
Extremadura	100.00	7.96	1.32	0.64	0.57	-	-	4.96	3.81	6.91
Galicia	100.00	2.82	0.41	6.40	0.04	0.04	1.06	3.77	1.74	5.51
Madrid (C. de)	100.00	11.10	3.36	3.85	2.43	3.84	2.28	4.84	3.35	13.94
Murcia (Región de)	100.00	4.93	1.06	29.08	0.80	1.23	0.11	1.87	4.37	3.41
Navarra (C. Foral de)	100.00	6.77	3.29	1.85	0.32	4.51	0.22	5.70	0.57	11.87
País Vasco	100.00	3.36	2.34	4.14	-	0.44	0.73	3.80	5.20	16.04
Rioja (La)	100.00	-	1.09	-	-	0.33	1.26	6.54	1.87	11.62
Ceuta y Melilla	-	-	-	-	-	-	-	-	-	-

(conclusión)

Origin Destination	Comunitat Valenciana	Extrema- dura	Galicia	Madrid (C. de)	Murcia (Región de)	Navarra (C. Foral de)	País Vasco	Rioja (La)	Ceuta y Melilla
TOTAL	11.21	0.78	2.45	22.59	1.69	0.86	4.86	0.63	0.61
Andalucía	9.89	2.08	1.60	19.83	2.59	0.66	2.96	1.50	0.57
Aragón	15.31	1.05	1.44	28.95	0.83	2.60	11.64	0.27	-
Asturias (P. de)	4.46	-	8.91	30.35	1.30	1.58	20.20	0.52	-
Balears (Illes)	1.97	-	1.27	1.06	19.17	-	1.25	0.35	-
Canarias	1.94	0.07	0.73	33.89	0.06	0.16	2.93	0.14	1.30
Cantabria	1.12	0.49	5.05	12.68	0.04	1.77	19.92	2.52	-
Castilla y León	3.08	1.72	28.07	21.42	1.16	0.49	7.54	1.02	-
Castilla-La Mancha	26.01	1.27	6.09	34.12	1.46	0.37	1.91	0.10	0.07
Cataluña	2.98	0.15	0.81	4.46	0.20	0.62	2.56	0.53	0.03
Comunitat Valenciana	34.89	0.32	1.20	24.46	1.79	1.02	5.39	0.36	0.12
Extremadura	13.27	16.98	2.90	26.72	1.33	5.85	4.60	2.19	-
Galicia	1.77	1.21	52.30	14.69	0.21	0.66	7.04	0.32	-
Madrid (C. de)	11.60	3.02	6.74	13.81	3.07	2.15	7.51	1.48	1.64
Murcia (Región de)	13.96	1.19	2.00	16.64	17.39	0.30	1.48	0.11	0.06
Navarra (C. Foral de)	6.52	0.53	5.01	10.08	1.81	14.48	23.02	3.42	-
País Vasco	2.84	-	1.23	11.88	-	2.60	44.94	0.46	-
Rioja (La)	-	0.16	2.47	33.32	4.99	0.94	32.83	2.58	-
Ceuta y Melilla	-	-	-	-	-	-	-	-	-

Provisional data

8. Travellers and overnight stays by countries of residence

Countries	Travellers		Overnight stays	
	Total	%	Total	%
TOTAL	654,250	100.00	4,988,886	100.00
Residents in Spain	186,922	28.57	875,675	17.55
Residents abroad	467,328	71.43	4,113,212	82.45
Total residents abroad	467,328	100.00	4,113,212	100.00
Total residents in E.U (excluding Spain)	409,535	87.63	3,541,881	86.11
- Germany	72,465	15.51	800,909	19.47
- Austria	2,433	0.52	26,595	0.65
- Belgium	4,752	1.02	40,508	0.98
-Denmark	27,536	5.89	219,649	5.34
- Finland	29,876	6.39	225,916	5.49
- France	6,237	1.33	45,319	1.10
- Greece	1,126	0.24	11,029	0.27
- Ireland	15,837	3.39	116,240	2.83
- Italy	5,484	1.17	30,840	0.75
- Luxembourg	807	0.17	6,861	0.17
- Netherlands	22,208	4.75	229,352	5.58
- Poland	1,658	0.35	14,044	0.34
- Portugal	5,854	1.25	42,607	1.04
- United Kingdom	161,130	34.48	1,282,964	31.19
- Czech Republic	1,681	0.36	17,443	0.42
- Sweden	46,182	9.88	394,740	9.60
- Other EU countries	4,269	0.91	36,866	0.90
Norway	32,586	6.97	345,806	8.41
Other european countries	10,810	2.31	114,935	2.79
United States of America	7,122	1.52	47,372	1.15
Rest of America	3,844	0.82	38,908	0.95
African countries	953	0.20	7,044	0.17
Other countries	2,479	0.53	17,267	0.42

Tourist accommodation occupancy survey:

(Rural tourist accommodation)

March 2008

Provisional data

1. Number of travellers, overnight stays and average stay

Autonomous Communities	Number of travellers			Number of overnight stays			Average stay
	Total	Residents In Spain	Residents abroad	Total	Residents In Spain	Residents abroad	
TOTAL	240,990	225,612	15,378	751,678	662,983	88,695	3.12
Andalucía	14,762	12,963	1,799	50,696	41,211	9,485	3.43
Aragón ²	14,757	14,420	338	48,287	45,077	3,210	3.27
Asturias (Principado de)	14,505	14,439	66	52,636	52,137	499	3.63
Balears (Illes)	5,601	984	4,616	26,369	2,516	23,852	4.71
Canarias	5,157	1,484	3,672	43,215	7,863	35,353	8.38
Cantabria	13,222	12,985	237	36,566	36,082	484	2.77
Castilla y León	53,128	51,822	1,306	148,264	144,588	3,676	2.79
Castilla-La Mancha	16,173	16,118	56	47,821	47,726	94	2.96
Cataluña	29,643	29,142	501	88,842	86,842	2,000	3.00
Comunitat Valenciana	12,782	12,197	585	40,838	37,365	3,473	3.19
Extremadura	14,180	13,588	591	35,763	34,408	1,355	2.52
Galicia ¹	13,085	12,590	495	30,165	29,277	889	2.31
Madrid (C. de)	10,175	9,936	239	22,581	22,184	397	2.22
Murcia (Región de)	4,417	4,403	13	16,367	16,338	29	3.71
Navarra (C. Foral de)	7,634	7,555	80	29,463	28,827	636	3.86
País Vasco	9,768	9,027	741	27,627	24,505	3,122	2.83
Rioja (La)	2,001	1,958	42	6,178	6,037	141	3.09
Ceuta y Melilla	-	-	-	-	-	-	-
Interannual rate	28.28	31.18	-2.89	75.35	92.32	5.76	36.69
Cumulative interannual rate	17.00	18.26	1.44	35.69	42.22	6.72	15.97

2. Open rural tourist accommodation and estimated vacancies, levels of occupancy and personnel employed by Autonomous Communities

Autonomous Communities	Nº of rural open estimated accom.	Nº of vacancies	Level of occupancy			Employed personnel
			By vacancies	By vacancies at week end	By rooms	
TOTAL	12,550	112,906	21.29	34.49	24.80	19,688
Andalucía	1,131	9,156	17.68	29.56	21.11	2,011
Aragón ²	955	7,267	21.22	33.75	25.68	1,134
Asturias (Principado de)	1,145	9,683	17.37	24.78	19.81	1,509
Balears (Illes)	150	2,663	31.70	36.21	33.35	624
Canarias	740	3,961	34.95	34.86	51.59	1,055
Cantabria	358	6,169	18.88	30.89	19.08	631
Castilla y León	2,457	22,025	21.56	37.63	25.35	3,977
Castilla-La Mancha	972	7,658	19.96	35.45	22.22	1,568
Cataluña	1,515	12,045	23.64	43.12	25.70	2,267
Comunitat Valenciana	870	8,017	16.39	26.01	22.59	1,248
Extremadura	405	4,832	23.56	37.29	26.50	687
Galicia ¹	488	5,934	16.28	29.48	19.54	863
Madrid (C. de)	182	3,099	23.38	41.91	31.01	557
Murcia (Región de)	252	2,745	19.07	33.26	21.42	415
Navarra (C. Foral de)	534	3,650	25.64	38.30	25.66	611
País Vasco	309	3,211	27.43	41.28	31.04	428
Rioja (La)	87	792	24.75	43.93	24.07	103
Ceuta y Melilla	-	-	-	-	-	-
Interannual rate	9.97	11.53	56.50	23.74	55.73	5.75
Cumulative interannual rate	9.04	9.50	21.60	9.40	24.81	7.01

¹ Information provided about the total number of travellers and overnight stays in the whole month.

² Due to the updating in the directory of establishments carried out in the province of Teruel and Zaragoza, the data to be published from January 2008 (Teruel, Zaragoza, Aragón and the national total) are not directly comparable with the data published last year, therefore, data link coefficients have been calculated to allow the comparison of data between different years. These coefficients are available in the information service of INE. (www.ine.es/infoine, tfno: 91 583 91 00).

3. Number of travellers, overnight stays and average stay of provinces with the greatest number of overnight stays³

Provinces	Number of travellers			Number of overnight stays			Average stay
	Total	Residents In Spain	Residents abroad	Total	Residents In Spain	Residents abroad	
Cáceres	13,335	12,779	555	34,013	32,734	1,279	2.55
Girona	10,987	10,797	190	32,923	32,158	766	3.00
St.Cruz de Tenerife	3,675	1,124	2,551	32,217	6,131	26,086	8.77
Huesca	9,181	8,961	220	30,972	29,025	1,947	3.37
Lleida	8,374	8,374	-	28,606	28,123	483	3.42
Ávila	9,818	9,694	124	27,757	27,509	248	2.83
León	8,570	8,391	179	22,791	22,479	311	2.66
Salamanca	7,018	6,872	146	20,245	20,001	244	2.88
Segovia	7,898	7,815	83	19,491	19,242	248	2.47
Castellón\Castelló	5,306	5,159	146	18,096	16,534	1,562	3.41
Barcelona	7,211	6,925	286	17,648	17,013	634	2.45
Albacete	4,195	4,195	-	15,080	15,080	-	3.60
Valencia\València	4,941	4,803	138	14,665	13,974	691	2.97
Málaga	3,738	3,262	477	14,536	11,844	2,692	3.89
Soria	4,438	4,333	105	13,561	13,256	305	3.06

4. Open rural tourist accommodation and estimated vacancies degrees of occupancy and personnel employed in provinces with the highest number of overnight stays³

Provinces	Nº of rural open estimated accommodation	Nº of vacancies	Level of occupancy			Employed personnel
			By vacancies	By vacancies at the weekend	By rooms	
Cáceres	377	4,601	23.54	37.37	26.35	645
Girona	511	4,126	25.60	44.84	27.05	810
St.Cruz de Tenerife	613	3,013	34.36	33.58	51.15	830
Huesca	554	4,114	24.08	37.62	31.76	651
Lleida	531	3,748	24.43	39.98	27.75	787
Ávila	581	4,467	19.98	43.33	20.47	995
León	338	3,174	22.88	34.59	24.38	587
Salamanca	391	3,039	21.40	34.04	32.70	529
Segovia	250	2,418	25.73	44.98	31.84	460
Castellón\Castelló	422	3,466	16.79	26.14	20.85	585
Barcelona	293	2,643	21.42	51.34	22.80	445
Albacete	432	2,495	19.40	30.29	22.30	778
Valencia\València	272	2,680	17.61	27.91	22.99	417
Málaga	482	3,231	14.45	23.74	18.67	837
Soria	192	1,885	23.01	41.71	25.47	289

³ Provinces belonging to uniprovincial Autonomous Communities have not been included because they are reflected in previous tables.

5. Number of travellers, overnight stays, average stay, estimated vacancies, levels of occupancy and personnel employed in areas with the highest number of overnight stays

Areas	Number of travellers		Number of overnight stays		Average stay	Capacity		Level of occupancy		
	Residents In Spain	Residents abroad	Residents In Spain	Residents abroad		Nº of rural open esti- mated accom.	Nº of vacancies	By vacancies	By vacancies at week end	By rooms
Pirineo Catalán	14,051	272	42,306	543	2.99	748	5,695	24.06	43.75	26.96
Pirineo Aragonés	8,582	-	27,607	1,670	3.41	519	3,880	24.15	38.29	32.15
Pirineo Navarro	6,981	80	25,993	636	3.77	493	3,319	25.54	39.23	25.89
Isla de Mallorca	806	4,542	1,888	23,545	4.76	138	2,427	33.54	37.79	35.36
Costa Brava	6,172	190	19,944	766	3.26	300	2,405	27.72	43.24	28.80
Costa Verde	4,073	31	17,192	113	4.22	351	3,329	16.58	23.37	17.44
Isla de La Palma	211	894	3,025	12,471	14.03	368	1,525	32.67	28.15	51.00
Isla de Tenerife	679	1,044	1,850	8,990	6.29	103	869	40.06	43.47	53.91
P.Nacional Picos de Europa	3,357	-	9,812	231	2.99	210	1,975	16.34	26.56	21.43
Costa Daurada	3,046	24	9,548	117	3.15	179	1,528	20.22	31.96	21.89
Pirineo Vasco	2,965	205	8,269	1,138	2.97	111	1,109	26.92	40.98	29.25
Isla de Gran Canaria	296	807	1,327	6,861	7.42	103	658	40.03	40.42	57.89
P.Nacional Taburiente	107	430	1,477	6,205	14.30	208	855	28.77	25.70	46.84
P.Nacional Teide	490	648	1,383	5,666	6.20	59	555	40.96	42.61	50.30
P.Natural Alt Pirineu	1,391	-	6,138	-	4.41	91	648	30.56	48.01	31.32

6. Number of travellers, overnight stays, average stay, estimated vacancies, levels of occupancy and personnel employed class per rural house per Autonomous Community⁴

Autonomous Communities	Number of travellers		Number of overnight stays		Average stay	Capacity		Level of occupancy		Employed personnel
	Residents In Spain	Residents abroad	Residents In Spain	Residents abroad		Nº of rural open esti- mated accom.	Nº of vacancies	By vacancies	By vacancies at week end	
TOTAL	146,647	7,726	459,519	52,893	3.32	10,338	76,836	21.32	34.90	14,677
Andalucía	12,091	1,574	39,240	9,060	3.53	1,110	8,761	17.60	29.33	1,932
Aragón	10,348	320	29,852	1,725	2.96	666	5,085	19.79	31.86	806
Asturias (Principado de)	8,174	-	31,629	-	3.87	818	4,993	20.13	27.49	944
Balears (Illes)	206	1,180	416	5,210	4.06	30	427	41.86	45.22	93
Canarias	920	2,374	6,709	26,797	10.17	716	3,357	31.96	30.98	949
Cantabria	2,762	41	8,786	225	3.22	114	1,644	17.47	28.97	189
Castilla y León	28,315	224	88,429	794	3.13	2,023	13,292	21.51	39.00	2,691
Castilla-La Mancha ⁵	-	-	-	-	-	-	-	-	-	-
Cataluña	24,718	379	74,816	1,752	3.05	1,364	10,199	24.06	43.95	2,017
Comunitat Valenciana	9,455	585	30,775	3,473	3.41	834	6,163	17.89	27.35	1,127
Extremadura	7,891	376	19,745	857	2.49	298	2,665	24.53	39.15	410
Galicia	8,149	153	19,693	244	2.40	341	3,947	16.19	30.58	573
Madrid (C. de)	683	-	1,743	5	2.56	35	264	21.31	43.31	63
Murcia (Región de) ⁵	-	-	-	-	-	-	-	-	-	-
Navarra (C. Foral de)	7,555	80	28,827	636	3.86	534	3,650	25.64	38.30	611
País Vasco	3,990	343	12,209	1,865	3.25	164	1,623	27.69	40.62	234
Rioja (La)	1,958	42	6,037	141	3.09	87	792	24.75	43.93	103

⁴ To facilitate the comparability between data from different Autonomous Communities (and because of the different regulation and different characteristics), a group called rural house has been created, with those accommodations with similar typology (location, capacity, etc...). The variables included in the previous table have been estimated with that type of establishments.

The variables shown in the table have been estimated with the type of accommodation under rural tourist accommodation.

⁵ The size of the sample in these communities does not facilitate the INE the broken down results, with the objective of maintaining statistical secrecy. Nevertheless, the data corresponding to these communities are included in the total.

7. Percentage distribution of Spanish travellers by Autonomous Community of origin

Origin / Destination	Total	Andalucía	Aragón	Asturias (P. de)	Balears (Illes)	Canarias	Cantabria	Castilla y León	Castilla-La Mancha	Cataluña
TOTAL	100.00	5.54	2.63	1.96	0.76	0.72	1.80	6.83	3.75	18.18
Andalucía	100.00	68.49	-	0.42	0.12	0.07	0.14	1.27	4.16	3.53
Aragón	100.00	0.60	25.00	0.28	0.00	-	1.02	0.40	2.06	24.64
Asturias (P. de)	100.00	2.97	-	11.95	0.12	0.25	7.84	6.15	3.25	6.24
Balears (Illes)	100.00	1.89	-	-	59.11	-	-	0.90	0.93	19.15
Canarias	100.00	0.00	-	-	3.45	78.78	-	-	0.60	1.09
Cantabria	100.00	1.05	2.14	2.04	2.44	0.92	11.60	13.91	1.94	5.38
Castilla y León	100.00	1.05	0.80	3.01	0.19	0.13	1.57	18.57	5.18	3.40
Castilla-La Mancha	100.00	3.31	1.37	0.14	0.17	0.09	0.17	2.52	16.91	6.28
Cataluña	100.00	0.48	0.27	-	0.51	0.09	-	0.21	-	93.51
Comunitat Valenciana	100.00	0.00	1.21	0.80	-	-	0.11	0.49	0.68	8.43
Extremadura	100.00	9.34	0.41	0.07	1.25	0.31	0.73	4.77	5.56	5.08
Galicia	100.00	0.25	0.23	3.10	1.57	0.81	0.93	5.91	1.22	3.21
Madrid (C. de)	100.00	1.75	1.46	0.68	0.33	0.33	0.20	2.93	2.32	1.40
Murcia (Región de)	100.00	0.40	-	-	-	-	-	0.35	0.20	7.77
Navarra (C. Foral de)	100.00	0.53	8.42	-	-	-	-	4.47	-	4.21
País Vasco	100.00	2.32	3.34	2.18	-	-	1.84	1.99	2.09	22.94
Rioja (La)	100.00	-	0.72	-	2.88	-	0.72	5.40	2.88	8.99
Ceuta y Melilla	-	-	-	-	-	-	-	-	-	-

(conclusion)

Origin / Destination	Comunitat Valenciana	Extrema-dura	Galicia	Madrid (C. de)	Murcia (Región)	Navarra (C. Foral)	País Vasco	Rioja (La)	Ceuta y Melilla
TOTAL	11.70	2.06	5.44	24.90	1.84	2.65	8.30	0.74	0.19
Andalucía	8.41	1.39	0.46	7.60	2.30	0.07	0.63	-	0.94
Aragón	15.45	0.05	0.90	13.18	0.62	4.20	11.09	0.51	-
Asturias (P. de)	5.08	0.52	6.85	33.24	1.31	0.65	13.52	0.06	-
Balears (Illes)	2.82	0.93	-	14.28	-	-	0.00	-	-
Canarias	0.71	-	-	14.78	-	-	0.60	-	-
Cantabria	4.30	1.49	8.10	19.24	0.07	5.79	18.28	1.23	0.07
Castilla y León	4.28	0.83	4.98	43.22	0.86	1.94	8.50	1.22	0.30
Castilla- La Mancha	20.98	0.62	0.85	37.14	6.83	0.15	2.29	0.00	0.18
Cataluña	3.06	0.16	0.23	0.24	-	0.79	0.45	-	-
Comunitat Valenciana	82.86	1.36	0.00	2.70	0.49	-	0.57	-	0.30
Extremadura	4.83	23.87	0.87	31.68	0.60	1.88	8.54	0.21	-
Galicia	2.86	1.12	54.45	19.21	0.49	0.37	3.31	0.35	0.61
Madrid (C. de)	7.21	0.40	1.40	75.32	1.73	0.07	2.41	0.07	-
Murcia (Región de)	53.15	-	-	4.42	32.10	1.40	-	-	0.20
Navarra (C. Foral de)	7.63	-	-	9.74	1.58	32.63	26.05	4.74	-
País Vasco	2.68	0.17	1.71	13.42	1.23	3.25	39.03	1.80	-
Rioja (La)	13.31	-	-	26.26	-	6.47	22.30	10.07	-
Ceuta y Melilla	-	-	-	-	-	-	-	-	-

8. Percentage distribution of overnight stays by Spaniards by Autonomous Community of origin

Origin \ Destination	Total	Andalucía	Aragón	Asturias (P. de)	Balears (Illes)	Canarias	Cantabria	Castilla y León	Castilla-La Mancha	Cataluña
TOTAL	100.00	5.38	2.11	1.60	0.91	0.91	1.83	6.28	3.62	18.56
Andalucía	100.00	59.76	0.82	0.30	0.11	0.09	0.05	2.37	4.87	4.97
Aragón	100.00	0.38	18.75	0.44	0.45	-	1.06	0.49	2.23	26.85
Asturias (P. de)	100.00	2.93	-	8.62	0.07	0.07	10.19	5.03	3.57	6.40
Balears (Illes)	100.00	2.21	-	-	45.25	-	-	0.70	0.73	23.77
Canarias	100.00	0.28	-	-	1.79	62.69	-	-	1.63	0.73
Cantabria	100.00	1.24	2.03	1.83	4.78	0.70	8.28	12.71	2.11	5.76
Castilla y León	100.00	1.20	0.67	2.12	0.15	0.09	1.51	17.67	5.23	3.41
Castilla-La Mancha	100.00	3.60	1.47	0.23	0.15	0.03	0.17	2.95	15.55	6.21
Cataluña	100.00	0.21	0.46	-	0.68	0.16	-	0.26	-	91.40
Comunitat Valenciana	100.00	0.37	0.58	0.26	-	-	0.15	0.32	1.00	6.57
Extremadura	100.00	9.99	0.41	0.03	2.47	0.12	0.85	3.29	3.66	7.86
Galicia	100.00	0.20	0.10	2.58	1.73	1.41	1.03	6.90	1.54	3.60
Madrid (C. de)	100.00	1.28	1.01	0.57	0.33	0.27	0.24	2.90	1.97	1.31
Murcia (Región de)	100.00	0.43	-	-	1.32	-	-	0.09	0.05	8.01
Navarra (C. Foral de)	100.00	0.83	3.86	1.45	-	-	-	4.69	-	6.55
País Vasco	100.00	3.69	2.61	2.31	-	-	1.32	2.48	1.91	22.40
Rioja (La)	100.00	0.93	0.70	-	3.73	-	0.23	2.80	3.73	6.07
Ceuta y Melilla	-	-	-	-	-	-	-	-	-	-

(conclusion)

Origin \ Destination	Comunitat Valenciana	Extremadura	Galicia	Madrid (C. de)	Murcia (Región)	Navarra (C. Foral)	País Vasco	Rioja (La)	Ceuta y Melilla
TOTAL	13.72	1.66	4.51	23.52	2.27	3.17	8.96	0.77	0.22
Andalucía	12.97	1.29	0.65	7.86	2.37	0.02	0.41	-	1.08
Aragón	15.15	0.03	0.95	14.31	0.48	3.59	14.52	0.33	-
Asturias (P. de)	5.12	0.41	6.80	34.16	1.81	2.18	12.61	0.03	-
Balears (Illes)	2.40	0.36	-	21.96	-	-	2.61	-	-
Canarias	0.13	-	-	32.52	-	-	0.23	-	-
Cantabria	7.27	1.73	7.27	22.54	0.05	5.87	14.66	1.09	0.07
Castilla y León	6.77	0.51	5.18	39.91	1.10	2.52	10.16	1.49	0.32
Castilla- La Mancha	23.61	0.64	0.60	33.30	8.03	0.15	2.99	0.08	0.25
Cataluña	4.53	0.05	0.31	0.21	-	1.28	0.45	-	-
Comunitat Valenciana	84.95	1.46	0.68	2.75	0.53	-	0.18	-	0.19
Extremadura	6.13	21.25	0.90	29.79	0.62	2.05	10.33	0.25	-
Galicia	2.61	1.91	45.79	22.76	0.87	0.51	5.52	0.44	0.53
Madrid (C. de)	7.78	0.18	1.81	75.53	1.79	0.09	2.82	0.12	-
Murcia (Región de)	50.28	0.05	-	3.33	33.66	2.65	-	-	0.11
Navarra (C. Foral de)	7.86	-	-	11.31	1.66	29.45	27.52	4.83	-
País Vasco	3.05	0.14	2.54	14.57	1.82	3.54	36.22	0.83	0.54
Rioja (La)	13.89	-	-	22.87	-	10.74	26.14	8.17	-
Ceuta y Melilla	-	-	-	-	-	-	-	-	-

9. Travellers and overnight stays by country of residence

Results by countries Countries	Travellers		Overnight stays	
	Total	%	Total	%
TOTAL	240,990	100.00	751,678	100.00
Residents Spain	225,612	93.62	662,983	88.20
Residents abroad	15,378	6.38	88,695	11.80
Total Residents abroad	15,378	100.00	88,695	100.00
Total Residents in UE (excluding Spain)	13,717	89.20	80,883	91.19
- Germany	6,451	41.95	47,789	53.88
- Belgium	474	3.08	1,951	2.20
- France	1,221	7.94	3,389	3.82
- Italy	296	1.93	638	0.72
- Netherlands	970	6.31	6,213	7.00
- Portugal	1,017	6.61	3,938	4.44
- United Kingdom	2,572	16.73	10,415	11.74
Sweden	278	1.81	1,699	1.92
Other European countries	947	6.16	7,605	8.57
United States of America	321	2.09	760	0.86
Other countries	830	5.40	4,298	4.85

HOLIDAY DWELLING PRICE INDEX (HDPI)

March 2008

Provisional data

National general index and breakdown by rates

	Index	Interannual variation rate
TOTAL	106.99	2.47
Normal	108.35	3.73
Weekend	117.74	5.91
Tour-operators and travel agencies	105.75	1.63

National general index and breakdown by modalities

	Index	Interannual variation rate
TOTAL	106.99	2.47
Studio	113.48	4.44
Dwellings 2/4 bedplaces	104.75	1.44
Dwellings 4/6 bedplaces	111.99	5.22

Tourist Campsite Price Index (TCSPI)

March 2008

Provisional data

National general index and breakdown by rates

	Index	Interannual variation rate
TOTAL	133.10	5.87
Normal rate	133.46	6.43
Special rate for stays up to one month	142.61	2.10
Special rate for stays longer than one month	127.66	5.72

National general index and breakdown by categories

	Index	Interannual variation rate
TOTAL	133.10	5.87
Luxury and first	128.41	2.79
Second	135.00	7.24
Third	132.34	7.21

Rural Tourism Accommodation Price Index (RTAPI)

March 2008

Provisional data

National general index and breakdown by rates

	Index	Variation Rate interannual
TOTAL	127.50	4.39
Normal	123.62	4.48
Weekend	131.87	4.26

National general index and breakdown by rent modality

	Index	Variation Rate interannual
TOTAL	127.50	4.39
Shared use (in case of per room rent modality)	119.25	4.32
Full use (rent of entire dwelling)	132.19	4.42

7

—