

Non-hotel Tourist Accommodation Occupancy Survey
March 2021. Provisional Data

Overnight stays in non-hotel tourist accommodation decreased by 21.8% in March, as compared to the same month of 2020

For the first time in the last thirteen months, overnight stays in rural tourism accommodation and campsites increased in annual terms, by 61.7% and 21.5%, respectively

Overnight stays in non-hotel tourist accommodation (holiday dwellings, tourist campsites, rural tourism accommodation and youth hostels) exceeded two million in March, 21.8% less than in the same month of 2020.

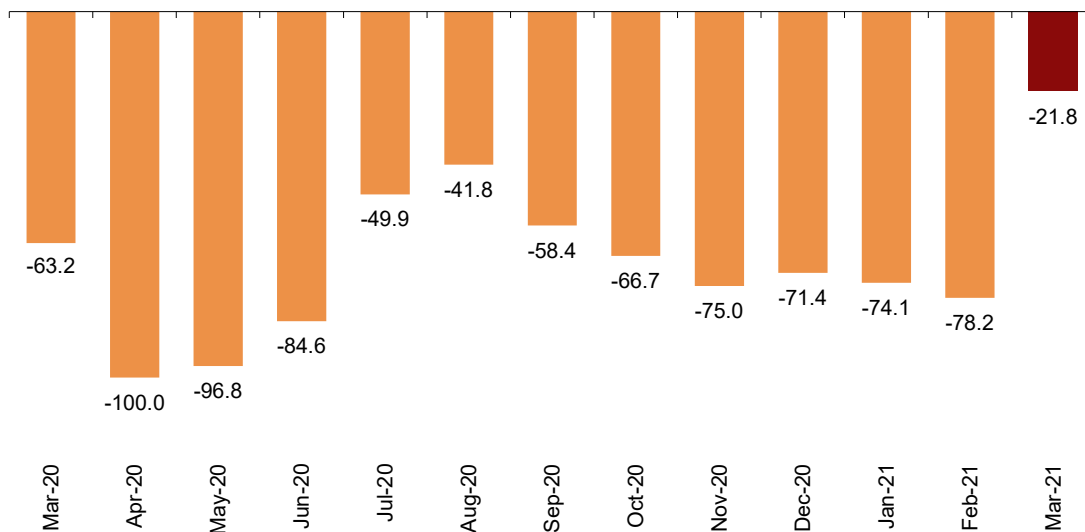
Compared with levels prior to the pandemic, overnight stays in non-hotel tourist accommodation showed a decrease of 70.0% compared to March 2019.

During the first three months of 2021, overnight stays fell by 65.7% as compared with the same period of the previous year.

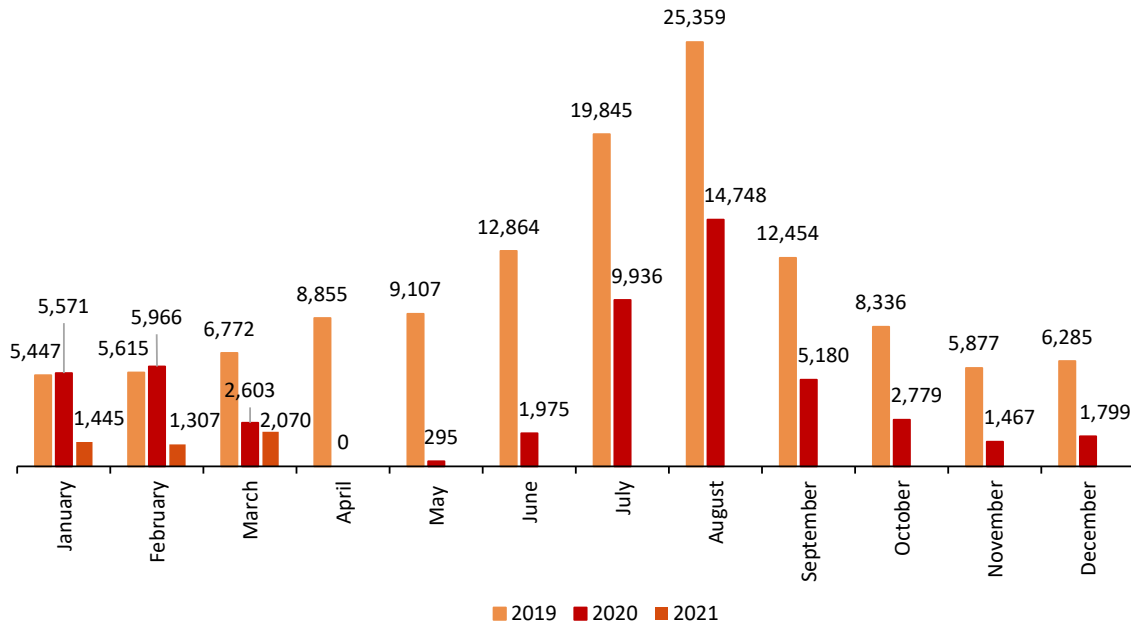
By traveller origin, overnight stays by residents of Spain increased by 114.2% in the annual rate, exceeding 1.3 million. In turn, overnight stays by non-residents fell by 62.8%, to 756 thousand.

Annual variation rate for overnight stays

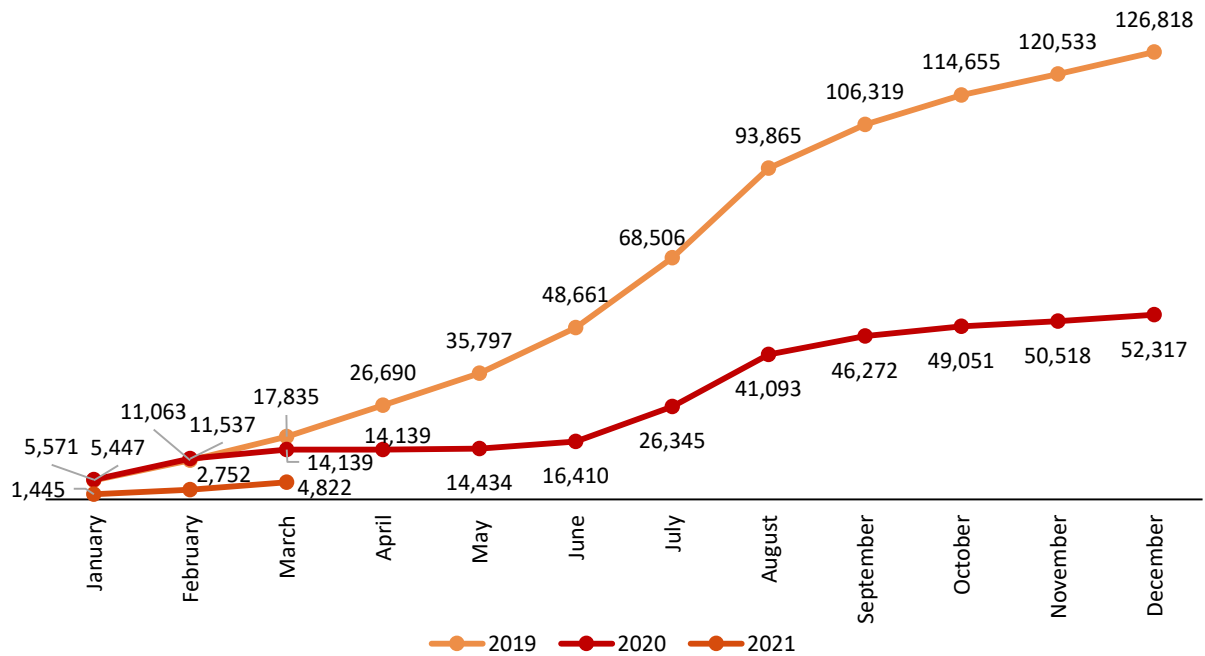
Percentage



Overnight stays in non-hotel accommodation monthly. Comparative 2019-2020-2021
Thousands



Accumulated overnight stays in non-hotel accommodation. Comparative 2019-2020-2021
Thousands



Open establishments

In March, a total of 85,387 hotels were open in Spain, 17.5% more than in the same month of 2020. This represented 58.0% of the total directory of establishments for that month.

Type of accommodation	Number of open establishments according to the survey	Percentage of total establishments in the directory	Number of estimated places according to the survey	Percentage of total places in the directory
TOTAL	85,947	58.0%	713,600	55.7%
Holiday dwellings (*)	72,318	58.5%	281,357	59.6%
Campsites	460	51.2%	285,753	55.1%
Rural T.	12,668	57.4%	115,382	56.1%
Hostels	501	30.6%	31,108	36.5%
Annual rate	17.5		37.7	

(*) Estimated number of apartments

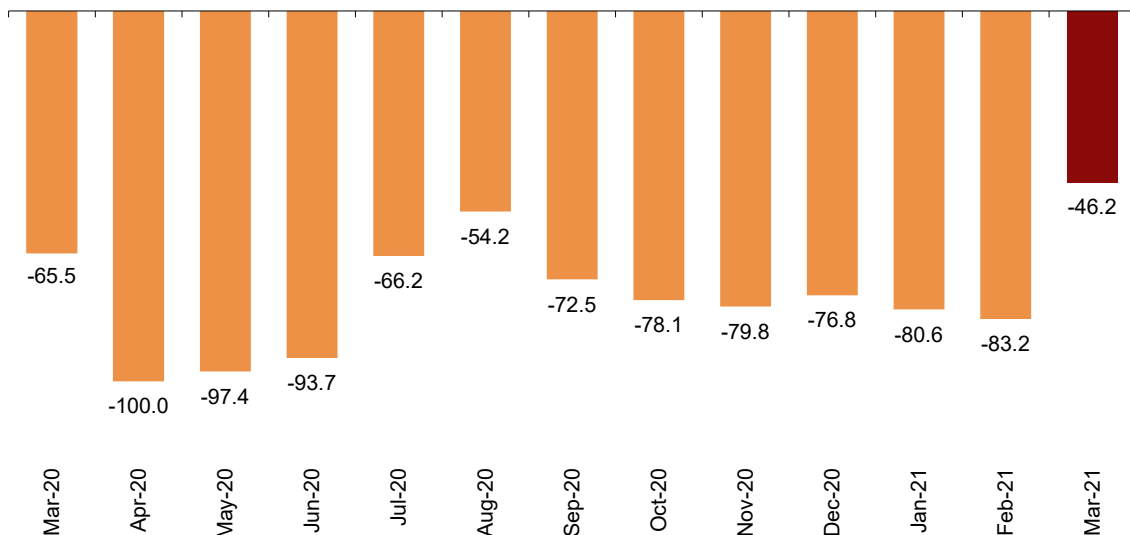
Holiday Dwellings

Overnight stays in holiday dwellings decreased by 46.2% in March in the annual rate. Overnight stays by residents rose by 86.2% while those by non-residents decreased by 73.7%.

Compared with levels prior to the pandemic, overnight stays in tourist apartments showed a decrease of 80.2% compared to March 2019.

Annual variation rate for overnight stays

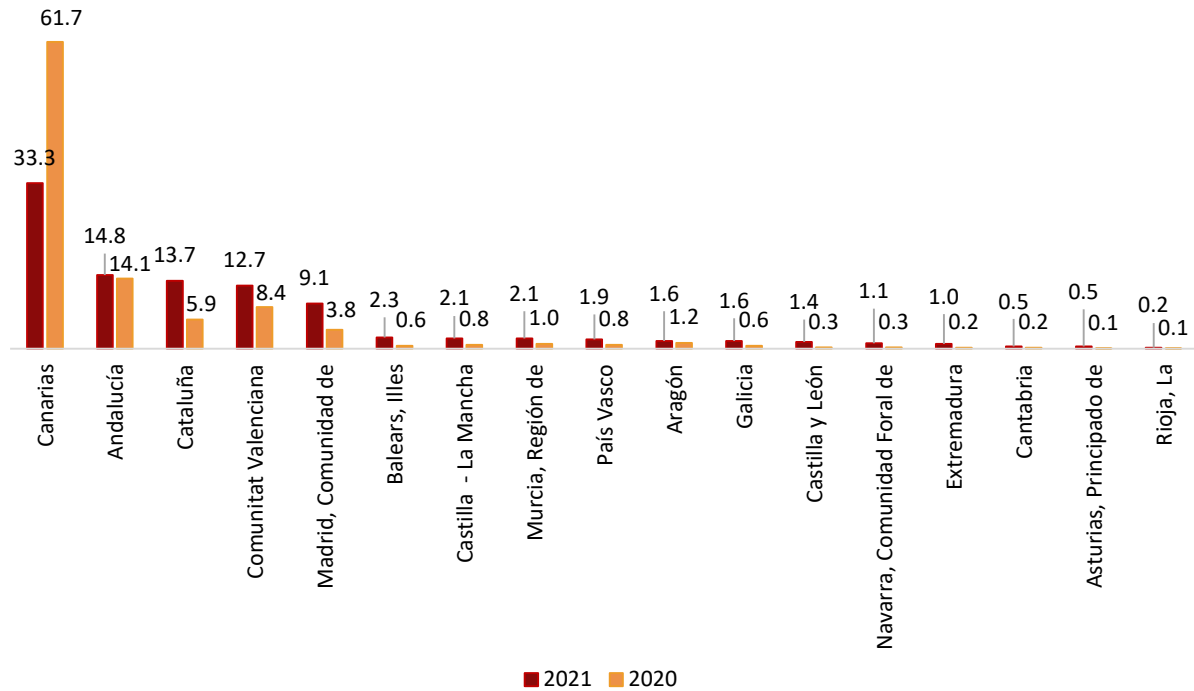
Percentage



By autonomous communities, Canarias, Andalucía, and Cataluña were the main destinations for travellers in the month of March, with annual variation rates in the number of overnight stays of -71.0%, -43.2% and 25.7%, respectively.

Distribution of total overnight stays. Comparative March 2020-2021

Percentage



By tourist areas, the Island of Tenerife was the preferred destination for tourist apartments, with 126,734 overnight stays and an occupancy rate of 24.4% for the apartments available.

The tourist sites with the greatest number of overnight stays in March were San Bartolomé de Tirajana, Madrid and Arona.

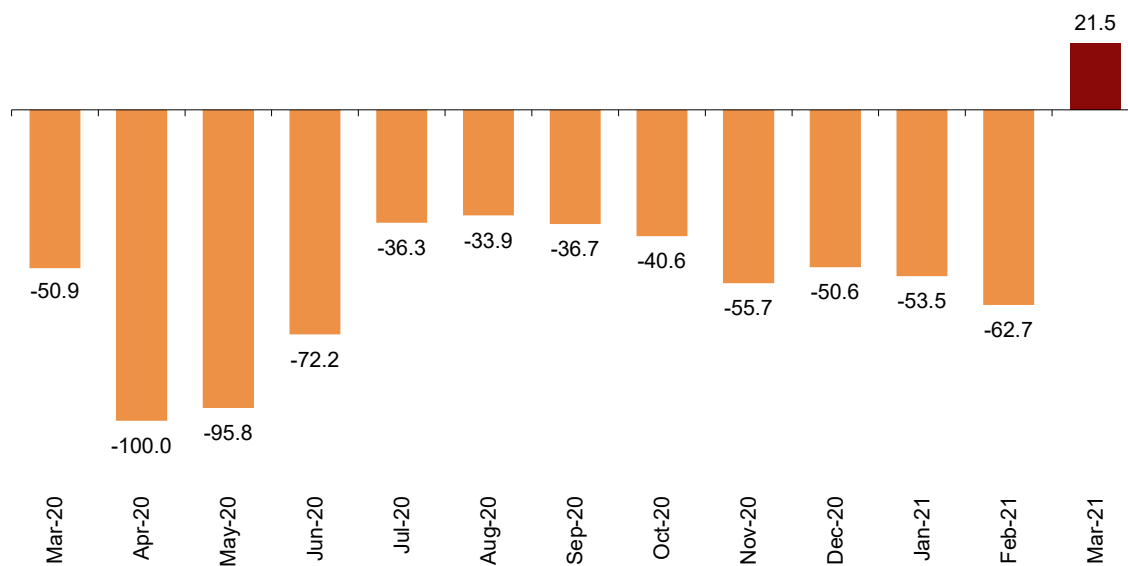
Tourist Campsites

Overnight stays at tourist campsites registered an increase of 21.5% in March as compared with the same month of the previous year. Overnight stays by residents increased by 267.1% while those by non-residents decreased by 39.5%.

Compared with levels prior to the pandemic, overnight stays at campsites decreased by 39.7% compared to March 2019.

Annual variation rate for overnight stays

Percentage



In March, 32.5% of the campsites offered were occupied, 15.4% more than in the same month of 2020. The weekend occupancy rate reached 33.8%, with a 3.3% annual increase.

Comunitat Valenciana was the preferred destination for tourist campsites, with 347,091 overnight stays, representing a decrease of 18.1% compared to March 2020. La Rioja achieved the highest occupancy rate, with 66.2% of the pitches offered.

By tourist areas, Costa Blanca was the preferred destination, with 197,331 overnight stays and an occupancy rate of 57.8% of the campsites offered.

The tourist sites with the most overnight stays were Benidorm, Marbella and Mazarrón.

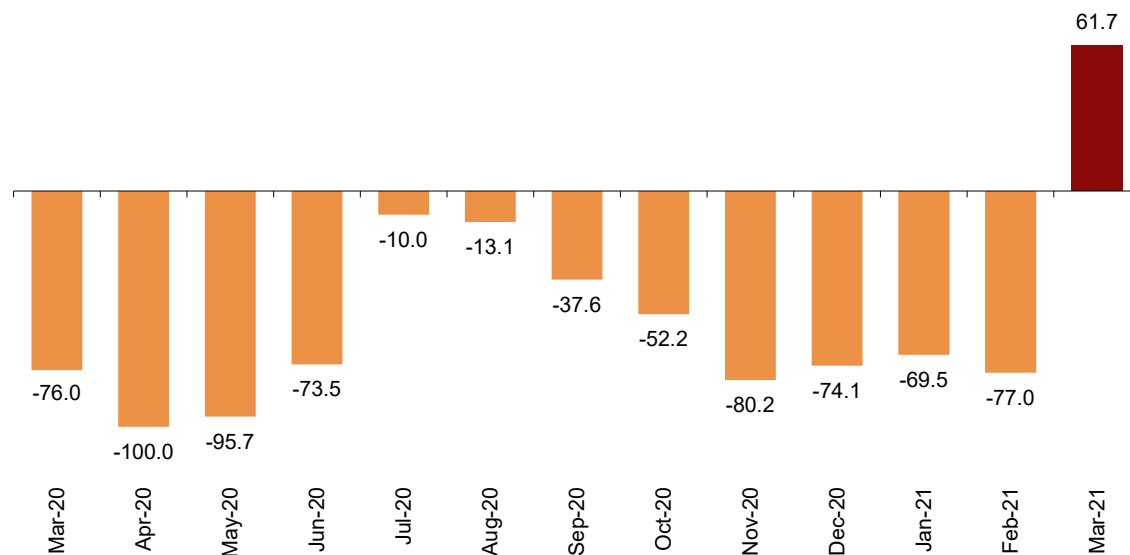
Rural tourism accommodation

Overnight stays in rural tourist accommodation increased 61.7% in March compared with the same month of 2020. Overnight stays by residents increased 107.2%, while those by non-residents decreased by 34.6%.

Compared with levels prior to the pandemic, overnight stays in rural tourism accommodations showed a decrease of 61.0% compared to March 2019.

Annual variation rate for overnight stays

Percentage



In rural tourism accommodation, 6.7% of the bed-places were occupied, 6.2% more than March 2020. The weekend occupancy rate stood at 12.2%, with a decrease of 4.9%.

By Autonomous Community, Castilla y León was the preferred destination, with 28,483 overnight stays, 34.3% more than in March 2020. Comunidad de Madrid reached the highest occupancy rate, with 26.6% of bed-places offered.

By tourist area, Extremadura Norte was the preferred destination for camping, with 15,230 overnight stays. The Sierra de Guadarrama Natural Park reached the highest occupancy rate, with 24.8% of the bedplaces offered.

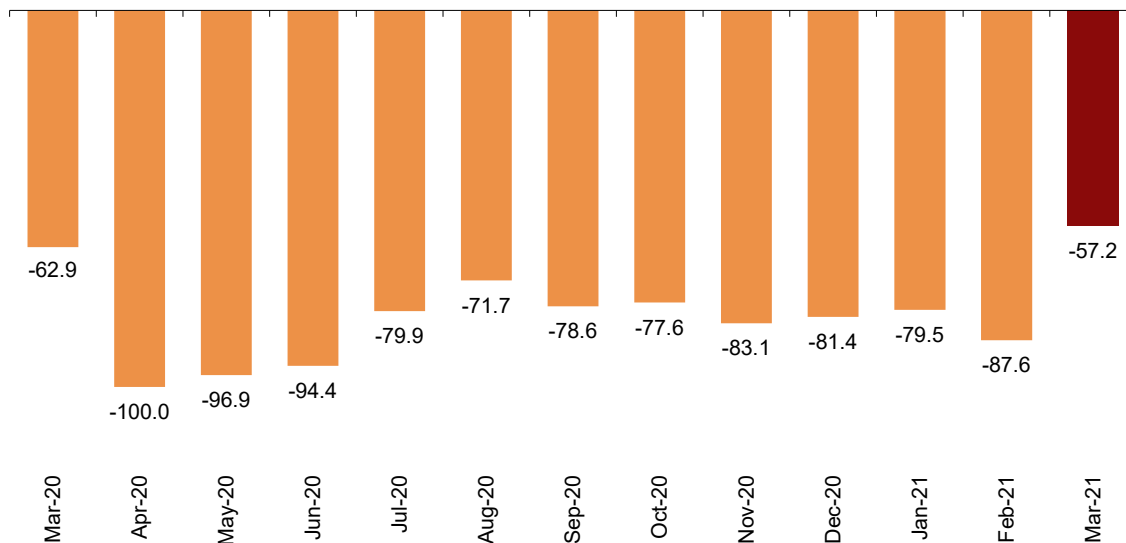
Hostels

Overnight stays in hostels¹ registered an annual decrease of 57.2% in March. Resident overnight stays decreased by 50.7% and non-resident overnight stays did so by 69.9%.

Compared with levels prior to the pandemic, in March 2021, overnight stays in hostels showed a decrease of 84.5% compared to March 2019.

Annual variation rate for overnight stays

Percentage



In hostels, 5.5% of the available bed-places were occupied, 65.6% less than in March 2020. The weekend occupancy rate reached 7.0%, with a 61.6% decrease.

By Autonomous Community, Andalusia was the preferred destination, with 11,465 overnight stays, 62.9% less than in March 2020. Canarias reached the highest occupancy rate, with 27.4% of the bed-places offered.

Price indices

The Tourist Apartment Price Index (TAPI) decreased by 13.1% in March compared to the same month of 2020 and the Tourist Campsite Price Index (TCPI) decreased by 2.0%.

For its part, the Rural Tourism Accommodation Price Index (RTAPI) rose 1.2%.

¹ Since January 2021, tourist hostels have been included in the survey, in addition to those belonging to the Spanish Youth Hostels Network. The data published are not comparable with those of March 2020, so [link coefficients](#) are thus published to allow the annual variation rates to be calculated.

Evolution of travellers and overnight stays in all Spanish collective tourist accommodation

In March, overnight stays in Spanish collective tourist accommodations (hotels², holiday dwellings, tourist campsites, rural tourism accommodation and youth hostels) decreased by 49.3% in the annual rate. Overnight stays by residents increased by 4.7% while those by non-residents decreased by 76.4%.

Travellers and overnight stays in collective tourist accommodation were:

March 2021	Holiday dwellings	Campsites	Rural T.	Hostels	Non-hotel	Hotels	Total
Arrivals	167,302	200,144	96,547	16,045	480,038	1,735,172	2,215,210
Residents	129,639	182,467	89,715	13,461	415,282	1,429,168	1,844,450
Non-residents	37,663	17,677	6,832	2,584	64,756	306,004	370,760
Overnight stays	882,558	893,407	241,491	52,831	2,07,287	3,521,656	5,591,943
Residents	526,232	536,595	210,179	41,020	1,314,026	2,551,569	3,865,595
Non-residents	356,326	356,812	31,312	11,812	76,262	970,088	1,726,350

Of the total overnight stays in collective tourist accommodation, 63.0% corresponded to hotels, and 37.0% to non-hotel tourist accommodations.

The main countries of origin for all regulated tourist accommodations were Germany (with 20.6% of the total number of non-resident overnight stays), France (13.1%), and the United Kingdom (11.1%).

Cataluña was the preferred destination, with over 917 thousand overnight stays (26.6% less than in March 2020). It was followed by Canarias (with over 838 thousand overnight stays and an annual decrease of 77.2%), and Andalucía (with over 760 thousand and a decrease of 60.2%).

Revision and updating of data

Coinciding with today's publication, the INE has updated the data for March 2020 of the Occupancy Survey in: Holiday Dwellings (HDOS), Campsites (COS), Rural Tourism Accommodation (RTAOS) and Hostels (HOS). As well as the Holiday Dwelling Price Index (HDPI), the Tourist Campsite Price Index (TCPI) and the Rural Tourism Accommodation Price Index (RTAPI).

Methodological note

The main objective of the Holiday Dwelling Occupancy Survey (HDOS) is to ascertain the behaviour of a series of variables that make it possible to describe the segment that occupies this type of accommodation within the tourist sector, both from the point of view of supply and demand.

The Holiday Dwelling Price Index (HDPI) is a statistical measure of the monthly evolution of the prices offered by holiday dwelling establishments to their clients.

Type of operation: monthly continuous survey.

² The press release corresponding to Hotel Tourism Short-Term Trends was published on April 23.

Population scope: holiday apartment establishments and/or companies operating holiday apartments.

Geographical scope: the entire national territory, with the exception of Ceuta and Melilla, where there are no establishments of this type.

Reference period of the results: the month.

Reference period for the information: The consultation of basic data refers to a fortnight of the month, chosen randomly, in such way that the complete month is covered among all establishments.

Type of sampling: stratified sampling by province and establishment size, and stratified at island-size level for Canarias and Illes Balears.

Collection method: questionnaire filled in directly by the establishment.

For more information on these statistical operations, you can consult the [methodology and the standardised methodological report](#) for each operation in INEbase.

The main objective of the Campsite Occupancy Survey (COS) is to ascertain the behaviour of a series of variables that make it possible to describe the segment that this type of accommodation occupies within the tourist sector, from the viewpoint of both supply and demand.

The Tourist Campsite Price Index (TCPI) is a statistical measure of the monthly evolution of the prices offered by campsites to their clients.

Type of operation: monthly continuous survey.

Population scope: camping establishments.

Geographical scope: the entire national territory, with the exception of Ceuta and Melilla, where there are no establishments of this type.

Reference period of the results: the month.

Reference period of the information: seven consecutive days of each month, chosen randomly in such way that, between all the establishments, the entire month is covered.

Sample size: approximately 1200 establishments.

Type of sampling: comprehensive survey in all provinces.

Collection method: questionnaire filled in directly by the establishment.

For more information on these statistical operations, you can consult the [methodology and the standardised methodological report](#) for each operation in INEbase.

The main objective of the Rural Tourism Accommodation Occupancy Survey (RTAOS) is to ascertain the behaviour of a series of variables that make it possible to describe the fundamental characteristics of this type of accommodation within the tourist sector, both from the point of view of supply and demand.

The Rural Tourism Accommodation Price Index (RTAPI) is a statistical measure of the monthly evolution of the prices that entrepreneurs of this type of accommodation apply to their clients.

Type of operation: monthly continuous survey.

Population scope: rural tourism establishments registered as such in the corresponding register of each Autonomous Community.

Geographical scope: the entire national territory, with the exception of Ceuta and Melilla where there are no establishments of this type.

Reference period of the results: the month.

Reference period for the information: The consultation of basic data refers to all the days of the month.

Type of sampling: comprehensive survey in all provinces except those where the population size is large enough to take a sample.

Collection method: questionnaire filled in directly by the establishment.

For more information on these statistical operations, you can consult the [methodology and the standardised methodological report](#) for each operation in INEbase.

The main objective of the Hostels Occupancy Survey (HOS) is to ascertain the behaviour of a series of variables that make it possible to describe the fundamental characteristics of this type of accommodation within the tourist sector, both from the point of view of supply and demand.

Type of operation: monthly continuous survey.

Population scope: tourist hostels registered as such in the corresponding registry of each Autonomous Community and the youth hostels belonging to the Spanish Network of Youth Hostels (REAJ)

Geographical scope: the entire national territory, with the exception of Ceuta, where there are no establishments of this type.

Reference period of the results: the month.

Reference period for the information: The consultation of basic data refers to all the days of the month.

Type of sampling: comprehensive survey in all provinces except those where the population size is large enough to take a sample.

Collection method: questionnaire filled in directly by the establishment.

For more information on this statistical operation, you can consult the [methodology and the standardised methodological report](#) in INEbase.

INE statistics are produced in accordance with the Code of Good Practice for European Statistics, which is the basis for the institution's quality policy and strategy. For more information see the section on Quality at INE and the Code of Best Practices on the INE website.

For further information see INEbase: www.ine.es/en/ Twitter: [@es_ine](https://twitter.com/es_ine)

All press releases at: www.ine.es/prensa/prensa_en.htm

Press office: **Telephone numbers:** (+34) 91 583 93 63 /94 08 – gprensa@ine.es

Information Area: **Telephone number:** (+34) 91 583 91 00 – www.ine.es/infoine/?L=1

Tourist Accommodation Occupancy Survey (Holiday Dwellings)

March 2021

Provisional data

4th May 2021

1. Travellers, overnight stays and average stay by Autonomous Cities and Communities

Autonomous Cities and Communities	Travellers			Overnight stays			Average stay
	Total	Residents in Spain	Residents abroad	Total	Residents in Spain	Residents abroad	
TOTAL	167.302	129.639	37.663	882.558	526.232	356.326	5,28
Andalucía	34.459	29.441	5.018	131.002	85.502	45.501	3,80
Aragón	4.314	4.209	104	14.398	13.423	974	3,34
Asturias, Principado de	672	634	38	4.331	4.156	176	6,44
Balears, Illes	2.701	1.430	1.271	20.522	10.163	10.359	7,60
Canarias	54.937	32.726	22.211	293.522	104.538	188.984	5,34
Cantabria	993	900	93	4.459	3.301	1.158	4,49
Castilla y León	4.702	4.551	151	12.792	11.930	861	2,72
Castilla - La Mancha	3.206	3.153	53	18.927	18.063	864	5,90
Cataluña	12.210	10.569	1.641	120.886	88.315	32.572	9,90
Comunitat Valenciana	17.674	14.834	2.840	112.250	74.035	38.215	6,35
Extremadura	4.053	4.017	36	9.060	8.934	126	2,24
Galicia	5.364	5.130	235	14.106	12.973	1.134	2,63
Madrid, Comunidad de	14.169	10.920	3.249	80.210	53.668	26.542	5,66
Murcia, Región de	3.125	2.845	280	18.592	14.410	4.183	5,95
Navarra, Comunidad Foral de	854	667	187	9.361	7.080	2.281	10,97
País Vasco	3.394	3.166	228	16.422	14.180	2.241	4,84
Rioja, La	473	448	26	1.717	1.562	155	3,63
Ceuta	-	-	-	-	-	-	-
Melilla	-	-	-	-	-	-	-
Annual rate	-15,11	110,66	-72,21	-46,17	86,15	-73,74	-36,59
Cumulative annual rate	-74,36	-44,13	-89,69	-75,75	-23,96	-86,83	-5,43

2. Capacity, occupancy and number of staff by Autonomous Cities and Communities

Autonomous Cities and Communities	Capacity		Level of occupancy				Employed personnel
	Estimated bedplaces	Estimated Holiday dwelling	Per bedplaces	Per bedplaces at weekend	Per Holiday dwelling	Per Holiday dwelling at weekend	
TOTAL	281.357	72.318	10,04	11,61	19,61	21,72	12.173
Andalucía	55.637	14.309	7,54	9,19	15,03	17,18	2.520
Aragón	5.462	1.322	8,50	12,53	16,24	21,81	436
Asturias, Principado de	1.274	310	10,97	11,25	25,95	24,71	97
Balears, Illes	3.301	892	20,05	20,45	35,82	36,66	210
Canarias	68.674	21.356	13,76	15,45	21,27	23,12	4.039
Cantabria	2.924	716	4,92	5,36	13,81	14,20	248
Castilla y León	4.217	1.077	9,78	15,13	20,82	28,31	391
Castilla - La Mancha	4.110	1.034	14,85	18,70	29,13	33,58	311
Cataluña	20.484	4.904	18,25	18,92	33,15	33,66	567
Comunitat Valenciana	84.918	17.782	4,26	5,35	9,97	12,10	1.531
Extremadura	3.243	740	9,01	14,57	20,97	30,95	478
Galicia	3.489	897	13,00	15,20	30,39	33,75	216
Madrid, Comunidad de	9.049	3.372	28,58	30,07	44,87	45,76	319
Murcia, Región de	7.842	1.882	7,65	8,68	18,02	19,28	185
Navarra, Comunidad Foral de	1.786	495	16,90	18,21	41,11	41,82	349
País Vasco	3.933	1.005	13,45	16,30	33,41	36,92	212
Rioja, La	1.014	224	5,46	9,02	16,44	20,16	63
Ceuta	-	-	-	-	-	-	-
Melilla	-	-	-	-	-	-	-
Annual rate	16,26	11,76	-54,05	-47,55	-48,13	-42,13	-11,46
Cumulative annual rate	-23,55	-24,64	-68,25	-66,39	-63,66	-61,95	-41,85

3. Travellers, overnight stays, capacity, occupancy, total number of staff with greater number of overnight stays¹

Provinces	Travellers		Overnight stays			Capacity		Level of occupancy			Employed personnel
	Residents in Spain	Residents abroad	Residents in Spain	Residents abroad	Average stay	Estimated bed-places	Estimated holiday dwelling	Per bed-places	Per Holiday dwelling	Per Holiday dwelling at weekend	
St Cruz de Tenerife	16.505	12.614	52.619	98.060	5,17	29.213	8.894	16,61	24,76	26,51	1.853
Palmas, Las	16.220	9.597	51.918	90.924	5,53	39.461	12.462	11,66	18,79	20,71	2.186
Barcelona	3.015	1.382	68.727	30.727	22,62	7.232	2.082	43,02	65,44	65,80	219
Málaga	9.243	2.809	31.234	32.296	5,27	31.975	7.808	6,30	12,76	13,64	1.383
Alicante/Alacant	8.011	1.617	35.618	24.784	6,27	60.432	12.742	3,22	7,20	9,07	1.075
Valencia/València	4.007	999	20.276	8.714	5,79	11.888	2.576	7,86	20,60	22,53	273
Sevilla	5.073	636	17.950	6.530	4,29	6.129	1.811	12,87	28,35	30,94	281
Castellón/Castelló	2.816	224	18.142	4.717	7,52	12.598	2.465	5,85	13,17	16,89	183
Granada	7.586	833	17.578	2.025	2,33	5.128	1.405	12,38	18,46	26,07	304
Girona	5.908	220	14.505	1.526	2,62	10.591	2.243	4,88	9,49	9,80	232
Cádiz	3.257	586	8.522	2.774	2,94	4.241	1.128	8,59	16,76	19,83	240
Toledo	787	30	9.076	560	11,79	871	238	35,68	62,28	65,47	44
Cáceres	3.220	0	7.037	0	2,19	2.328	549	9,75	21,09	33,68	387
Huesca	2.828	0	7.002	0	2,48	2.640	633	8,56	13,78	24,68	211
Araba/Álava	667	19	5.304	661	8,69	854	232	22,53	56,60	61,14	38

¹ Provinces belonging to uniprovincial Autonomous Communities have not been included because they are reflected in previous tables.

4. Travellers, overnight stays, capacity, occupancy, total number of staff from tourist areas with greater number of overnight stays

Tourist Areas	Travellers		Overnight stays			Capacity		Level of occupancy			Employed personnel
	Residents in Spain	Residents abroad	Residents in Spain	Residents abroad	Average stay	Estimated bed-places	Estimated holiday dwelling	Per bed-places	Per Holiday dwelling	Per Holiday dwelling at weekend	
Isla de Tenerife	13.674	11.131	41.160	85.574	5,11	24.541	7.266	16,62	24,36	26,24	1.489
Isla de Gran Canaria	11.741	5.288	33.335	55.953	5,24	22.309	7.167	12,90	20,05	22,91	1.289
Costa Barcelona	1.906	422	59.462	20.786	31,00	4.892	1.511	52,92	73,01	73,16	109
Costa Blanca	7.489	1.566	33.945	24.251	6,43	58.118	12.288	3,23	7,21	8,96	1.029
Costa del Sol (Málaga)	7.761	2.717	25.985	27.360	5,09	29.702	7.179	5,79	12,08	12,89	1.259
Isla de Fuerteventura	1.944	2.557	7.609	20.385	6,22	6.098	2.020	14,76	23,12	24,03	275
Isla de Lanzarote	2.535	1.752	10.974	14.587	5,96	11.054	3.276	7,44	13,37	13,84	622
Costa de Castellón	2.162	209	16.190	4.605	8,77	11.926	2.304	5,62	12,70	15,59	157
Isla de Mallorca	894	1.205	8.508	10.174	8,90	2.680	696	22,49	40,18	40,51	193
Barcelona	1.101	960	8.394	9.941	8,90	2.218	529	19,58	42,49	43,49	103

5. Travellers, overnight stays, capacity, occupancy, total number of staff from tourist sites with greater number at overnights stays

Tourist sites	Travellers		Overnight stays			Capacity		Level of occupancy			Employed personnel
	Residents in Spain	Residents abroad	Residents in Spain	Residents abroad	Average stay	Estimated bed-places	Estimated holiday dwelling	Per bed-places	Per Holiday dwelling	Per Holiday dwelling at weekend	
S. Bartolomé de Tirajana	9.538	4.034	27.920	44.336	5,32	15.844	5.257	14,70	22,07	25,46	963
Madrid	8.532	3.208	44.960	25.751	6,02	8.126	3.064	28,06	43,00	43,72	251
Arona	3.827	3.868	11.349	29.169	5,27	11.185	3.470	11,68	17,69	18,95	676
Adeje	4.588	3.928	11.369	28.907	4,73	7.367	1.987	17,61	31,43	33,30	386
Valencia	2.988	730	12.550	5.906	4,96	4.459	1.011	13,35	35,38	38,55	179
Puerto de la Cruz	3.266	1.245	8.559	9.826	4,08	2.768	1.102	21,35	29,74	33,28	226
Sevilla	3.656	442	12.938	4.467	4,25	5.046	1.432	11,12	25,83	29,12	246
Málaga	1.735	385	7.869	5.511	6,31	3.634	1.008	11,88	19,45	21,16	155
Pájara	680	1.104	2.910	10.414	7,47	2.995	1.068	14,28	19,45	20,55	150
Tías	1.479	986	5.484	7.622	5,32	5.908	1.756	7,12	11,50	12,16	353

6. Travellers and overnight stays by countries of residence

Countries	Travellers		Overnight stays	
	Total	%	Total	%
TOTAL	167.302	100,00	882.558	100,00
Residents in Spain	129.639	77,49	526.232	59,63
Residents abroad	37.663	22,51	356.326	40,37
Total residents abroad	37.663	100,00	356.326	100,00
Total residents in EU (excluding Spain)	27.161	72,12	248.605	69,77
- Germany	7.226	19,19	70.911	19,90
- Austria	302	0,80	3.305	0,93
- Belgium	646	1,72	9.894	2,78
- Denmark	261	0,69	2.667	0,75
- Finland	362	0,96	2.565	0,72
- France	6.147	16,32	45.241	12,70
- Greece	84	0,22	876	0,25
- Ireland	687	1,82	6.562	1,84
- Italy	2.869	7,62	23.600	6,62
- Luxembourg	173	0,46	1.709	0,48
- Netherlands	937	2,49	10.797	3,03
- Poland	1.383	3,67	14.175	3,98
- Portugal	780	2,07	8.104	2,27
- Czech Republic	1.311	3,48	13.062	3,67
- Sweden	1.449	3,85	12.912	3,62
- Other EU countries	2.544	6,75	22.225	6,24
Norway	433	1,15	4.420	1,24
United Kingdom	2.198	5,84	25.687	7,21
Russia	380	1,01	3.416	0,96
Switzerland	591	1,57	5.504	1,54
Other european countries	1.247	3,31	13.683	3,84
United States of America	518	1,37	4.151	1,17
Rest of America	1.543	4,10	18.447	5,18
African countries	764	2,03	6.406	1,80
Other countries	2.828	7,51	26.007	7,30

Tourist Accommodation Occupancy Survey Campsite Occupancy Survey (COS)

March 2021

Provisional data

4th May 2021

1. Travellers, overnight stays and average stay by category of establishment

Category	Travellers			Overnight stays			Average stay
	Total	Residents in Spain	Residents abroad	Total	Residents in Spain	Residents abroad	
TOTAL	200.144	182.467	17.677	893.407	536.595	356.812	4,46
Luxury and first-class	75.842	70.648	5.194	347.347	220.773	126.574	4,58
Second-class	99.804	90.415	9.390	472.605	261.347	211.258	4,74
Third-class	24.498	21.405	3.093	73.455	54.475	18.980	3,00
Annual rate	140,18	326,13	-56,36	21,45	267,13	-39,47	-49,43
Cumulative annual rate	-32,44	0,83	-78,25	-40,46	17,05	-56,56	-11,87

2. Open establishments, capacity, occupancy and number of staff by category of establishments

Category	Estimated open establishments	Capacity		Occupied pitches	Occupancy rate per pitch	Weekend occupancy rate	Employed personnel
		Estimated bedplaces	Estimated pitches				
TOTAL	460	285.753	90.368	911.469	32,54	33,79	2.931
Luxury and first-class	116	114.907	35.278	328.019	29,99	30,51	1.160
Second-class	266	145.956	47.352	494.563	33,69	35,52	1.504
Third-class	78	24.890	7.738	88.886	37,06	38,39	267
Annual rate	59,77	62,99	56,67	32,54	-15,40	3,34	51,02
Cumulative annual rate	-1,59	1,87	0,95	-20,60	-21,08	-14,82	-14,61

3. Travellers, overnight stays and average stay by Autonomous Cities and Communities

Autonomous cities and communities	Travellers			Overnight stays			Average stay
	Total	Residents in Spain	Residents abroad	Total	Residents in Spain	Residents abroad	
TOTAL	200.144	182.467	17.677	893.407	536.595	356.812	4,46
Andalucía	19.639	15.046	4.593	108.503	48.898	59.605	5,52
Aragón	5.843	5.603	240	16.447	15.206	1.241	2,81
Asturias, Principado de	61	45	16	545	485	60	8,93
Balears, Illes ¹	-	-	-	-	-	-	-
Canarias	992	980	12	6.016	2.456	3.560	6,06
Cantabria ¹	-	-	-	-	-	-	-
Castilla y León	749	597	151	1.380	1.183	197	1,84
Castilla - La Mancha	2.424	2.395	29	6.400	6.370	29	2,64
Cataluña	90.765	86.253	4.511	237.832	220.994	16.838	2,62
Comunitat Valenciana	35.154	29.653	5.501	347.091	115.754	231.336	9,87
Extremadura	3.465	2.770	695	7.992	6.662	1.330	2,31
Galicia	1.489	1.486	3	2.722	2.717	6	1,83
Madrid, Comunidad de	21.773	21.644	129	65.698	64.874	824	3,02
Murcia, Región de	6.668	5.874	794	55.736	17.773	37.963	8,36
Navarra, Comunidad Foral de	2.710	2.608	102	15.501	15.135	365	5,72
País Vasco	8.180	7.284	896	21.023	17.584	3.438	2,57
Rioja, La	167	162	5	390	371	19	2,34
Ceuta	-	-	-	-	-	-	-
Melilla	-	-	-	-	-	-	-

¹ The size of the sample in these communities does not facilitate the INE the broken down results, with the objective of maintaining statistical secrecy. Nevertheless, the data corresponding to these communities are included in the national total.

4. Open establishments, capacity, occupancy and number of staff by autonomous cities and communities

Autonomous cities and communities	Estimated open establishments	Capacity		Occupied pitches	Occupancy rate per pitch	Weekend occupancy rate	Employed personnel
		Estimated bedplaces	Estimated pitches				
TOTAL	460	285.753	90.368	911.469	32,54	33,79	2.931
Andalucía	91	51.963	16.385	108.192	21,30	22,07	521
Aragón	38	15.149	4.630	31.946	22,26	19,59	133
Asturias, Principado de	3	2.779	714	1.485	6,71	7,00	15
Balears, Illes ¹	-	-	-	-	-	-	-
Canarias	5	3.000	1.113	6.219	18,02	16,46	20
Cantabria ¹	-	-	-	-	-	-	-
Castilla y León	9	4.022	1.489	10.145	21,98	23,39	28
Castilla - La Mancha	12	5.757	1.679	10.725	20,61	26,61	92
Cataluña	87	65.424	20.897	221.741	34,23	36,11	685
Comunitat Valenciana	112	71.237	22.149	285.933	41,64	42,61	753
Extremadura	9	3.476	1.255	9.175	23,57	32,19	36
Galicia	24	7.872	2.701	4.443	5,31	7,41	60
Madrid, Comunidad de	18	16.984	5.888	97.573	53,45	51,65	214
Murcia, Región de	17	15.030	4.938	38.118	24,90	25,32	168
Navarra, Comunidad Foral de	13	8.110	2.179	23.487	34,77	31,75	78
País Vasco	14	8.205	2.443	26.915	35,54	36,08	91
Rioja, La	3	4.374	1.266	25.989	66,20	45,06	23
Ceuta	-	-	-	-	-	-	-
Melilla	-	-	-	-	-	-	-

¹ The size of the sample in these communities does not facilitate the INE the broken down results, with the objective of maintaining statistical secrecy. Nevertheless, the data corresponding to these communities are included in the national total.

5. Travellers and overnight stays, average stay, capacity, occupancy and number of staff by provinces with the greatest number of overnight stays¹

Provinces	Travellers		Overnight stays		Average stay	Estimated open establishments	Estimated pitches	Occupancy rate per pitch	Employed personnel
	Residents in Spain	Residents abroad	Residents in Spain	Residents abroad					
	Alicante/Alacant	9.980	2.499	56.090					
Tarragona	31.212	1.127	85.804	4.365	2,79	19	5.682	31,62	237
Girona	21.826	3.005	52.930	10.814	2,57	30	5.524	35,09	193
Barcelona	25.879	303	61.870	1.136	2,41	21	6.829	33,68	165
Castellón/Castelló	8.869	1.746	24.524	30.400	5,17	36	6.416	26,12	222
Valencia/València	10.804	1.256	35.141	14.987	4,16	30	5.295	39,03	148
Málaga	4.366	1.251	15.786	33.054	8,70	27	4.316	27,79	155
Lleida	7.337	76	20.390	524	2,82	17	2.862	39,07	91
Almería	1.640	1.436	5.750	13.383	6,22	23	2.885	19,69	89
Cádiz	2.691	1.003	6.515	6.300	3,47	11	2.705	16,02	77
Granada	1.595	637	5.603	4.615	4,58	14	2.221	17,63	66
Huesca	4.328	41	9.486	162	2,21	25	3.236	25,61	84
Araba/Álava	-	-	-	-	-	-	-	-	-
Gipuzkoa	2.735	818	5.704	1.705	2,09	7	1.340	26,31	45
Sevilla	1.806	0	6.883	0	3,81	3	499	24,24	51

¹ Provinces belonging to uniprovincial Autonomous Communities have not been included because they are reflected in previous tables.

6. Travellers, overnight stays, average stay, open establishments, capacity, occupancy and number of staff from tourist areas with the greatest number of overnight stays

Tourist areas	Travellers		Overnight stays		Average stay	Estimated open establishments	Estimated pitches	Occupancy rate per pitch	Employed personnel
	Residents in	Residents abroad	Residents in	Residents abroad					
	Spain		Spain						
Costa Blanca (Alicante)	7.644	2.044	44.163	153.168	20,37	39	8.057	57,78	316
Costa Daurada	26.369	737	72.715	2.953	2,79	14	4.907	29,63	213
Costa Barcelona	19.665	303	47.854	1.136	2,45	10	5.320	29,53	110
Costa Brava	14.661	2.996	38.051	10.799	2,77	17	4.026	32,15	149
Costa de Castellón	6.254	1.676	15.449	30.093	5,74	29	5.758	26,05	187
Costa del Sol (Málaga)	3.174	953	13.553	30.418	10,65	16	3.484	30,24	130
Costa Cálida (Murcia)	1.721	683	9.007	34.488	18,09	9	3.876	23,15	128
Pirineus	17.386	85	41.745	538	2,42	35	5.235	42,28	178
Costa Valencia (Valencia)	3.618	920	18.232	13.461	6,98	15	3.565	37,74	92
Costa de Almería	1.117	1.368	4.958	12.171	6,89	18	2.516	17,17	69
Terres de l'Ebre	4.843	390	13.089	1.412	2,77	5	775	44,22	24
Costa de la Luz de Cádiz	2.446	813	6.072	5.911	3,68	10	2.618	14,36	73
Pirineo Aragonés	4.144	41	9.188	162	2,23	21	3.033	24,93	75
Pirineo Navarro	1.996	33	8.860	111	4,42	8	1.068	30,82	48
Costa Tropical (Granada)	1.318	257	4.404	3.971	5,32	6	1.205	17,04	36

7. Travellers, overnight stays, average stay, open establishments, capacity, occupancy and number of staff from tourist sites with the greatest number at overnights stays

Tourist sites	Travellers		Overnight stays		Average stay	Estimated open establishments	Estimated pitches	Occupancy rate per pitch	Employed personnel
	Residents in	Residents abroad	Residents in	Residents abroad					
	Spain		Spain						
Benidorm	896	223	5.579	98.280	31,00	9	3.869	70,11	114
Marbella	2.054	230	9.106	12.810	9,60	3	1.313	33,24	46
Mazarrón	925	365	2.939	14.757	13,72	3	882	41,84	39
Cartagena	190	168	1.262	16.135	31,00	3	2.555	11,95	61
Cabanes	889	113	3.939	10.383	14,29	4	1.211	21,77	47
Oliva	985	434	6.931	7.382	10,09	5	1.267	18,70	47
Vélez-Málaga	501	227	1.217	8.827	13,80	4	869	28,20	41
Campello, El	546	208	3.325	6.566	13,10	6	445	51,19	25
Calp	209	435	663	8.882	14,82	5	485	51,69	22
Villajoyosa	1.280	76	5.623	3.574	6,78	3	369	45,82	18
Blanes	2.763	74	8.290	363	3,05	5	1.404	32,94	54
Peníscola	344	455	1.100	5.854	8,70	6	1.023	12,60	18

8. Travellers and overnight stays by countries of residence

Countries	Travellers		Overnight stays	
	Total	%	Total	%
TOTAL	200.144	100,00	893.407	100,00
Residents in Spain	182.467	91,17	536.595	60,06
Residents abroad	17.677	8,83	356.812	39,94
TOTAL residents abroad	17.677	100,00	356.812	100,00
TOTAL residents in EU (excluding Spain)	13.763	77,86	210.272	58,93
- Germany	6.774	38,32	94.115	26,38
- Austria	219	1,24	2.412	0,68
- Belgium	389	2,20	18.249	5,11
- Denmark	14	0,08	2.073	0,58
- Finland	65	0,37	2.214	0,62
- France	2.480	14,03	30.741	8,62
- Greece	0	0,00	0	0,00
- Ireland	274	1,55	4.619	1,29
- Italy	337	1,91	2.234	0,63
- Luxembourg	74	0,42	1.293	0,36
- Netherlands	2.104	11,90	38.241	10,72
- Poland	316	1,79	839	0,24
- Portugal	170	0,96	2.345	0,66
- Czech Republic	115	0,65	542	0,15
- Sweden	259	1,46	8.234	2,31
- Other EU countries	175	0,99	2.120	0,59
Norway	93	0,52	4.134	1,16
United Kingdom	2.417	13,67	129.956	36,42
Russia	20	0,11	178	0,05
Switzerland	588	3,32	8.437	2,36
Other European countries	225	1,27	1.008	0,28
United States of America	109	0,62	505	0,14
Rest of America	123	0,70	777	0,22
African countries	62	0,35	210	0,06
Other countries	277	1,57	1.335	0,37

¹ Non-significant data

Tourist accommodation occupancy survey (Rural tourist accommodation)

March 2021

Provisional data

4th May 2021

1. Number of travellers, overnight stays and average stay by Autonomous City and Community

Autonomous Communities	Number of travellers			Number of overnight stays			Average stay
	Total	Residents In Spain	Residents abroad	Total	Residents In Spain	Residents abroad	
TOTAL	96.547	89.715	6.832	241.491	210.179	31.312	2,50
Andalucía	7.375	6.757	618	18.890	16.757	2.133	2,56
Aragón	4.269	4.069	200	11.896	10.646	1.250	2,79
Asturias, Principado de	438	428	10	2.410	2.349	60	5,50
Balears, Illes	4.503	2.534	1.969	14.366	5.263	9.103	3,19
Canarias	3.707	2.415	1.292	15.648	8.355	7.293	4,22
Cantabria	2.471	2.400	71	5.575	5.456	119	2,26
Castilla y León	11.842	11.567	275	28.483	27.271	1.213	2,41
Castilla-La Mancha	5.749	5.625	125	18.290	15.249	3.041	3,18
Cataluña	11.180	10.859	321	27.336	26.498	839	2,45
Comunitat Valenciana	6.252	6.101	151	15.686	15.378	308	2,51
Extremadura	10.992	10.146	846	23.025	21.450	1.576	2,09
Galicia	3.205	3.107	98	5.143	4.985	158	1,60
Madrid, Comunidad de	13.952	13.386	566	24.172	23.197	975	1,73
Murcia, Región de	1.676	1.667	9	3.548	3.502	46	2,12
Navarra, Comunidad Foral de	2.809	2.729	80	10.084	8.152	1.932	3,59
País Vasco	5.678	5.516	163	16.029	14.868	1.161	2,82
Rioja, La	448	410	38	908	803	105	2,03
Ceuta	-	-	-	-	-	-	-
Melilla	-	-	-	-	-	-	-
Annual rate	71,39	95,71	-34,88	61,73	107,24	-34,63	-5,64
Cumulative annual rate	-63,35	-61,11	-78,85	-53,75	-49,91	-67,01	26,18

2. Open rural establishments, bed-places, occupancy rates and employed personnel by Autonomous City and Community

Autonomous Communities	Estimated open rural establishments	Estimated bed-places	Occupancy rate			Employed personnel
			Of bed-places	Of bed-places at weekend	Of bedrooms	
TOTAL	12.668	115.382	6,74	12,24	10,11	16.870
Andalucía	2.066	17.183	3,54	6,21	6,02	2.625
Aragón	896	7.097	5,40	8,50	9,08	997
Asturias, Principado de	121	1.361	5,71	3,16	10,24	166
Balears, Illes	157	2.821	16,34	24,80	21,36	521
Canarias	516	3.052	16,49	20,43	26,28	624
Cantabria	295	4.132	4,35	8,84	6,15	424
Castilla y León	2.714	22.502	4,08	7,18	6,84	3.419
Castilla-La Mancha	1.451	12.589	4,69	8,83	7,27	1.858
Cataluña	1.403	12.637	6,97	12,92	10,82	1.863
Comunitat Valenciana	628	5.588	9,05	18,70	15,35	911
Extremadura	645	7.333	10,12	22,42	14,29	872
Galicia	295	3.824	4,33	10,77	5,91	459
Madrid, Comunidad de	193	2.911	26,63	55,24	33,02	528
Murcia, Región de	134	1.967	5,82	13,55	8,76	222
Navarra, Comunidad Foral de	722	5.611	5,79	10,43	8,46	881
País Vasco	342	3.851	13,40	19,59	20,00	402
Rioja, La	90	924	3,17	5,44	4,19	98
Ceuta	-	-	-	-	-	-
Melilla	-	-	-	-	-	-
Annual rate	57,67	52,34	6,15	-4,88	8,64	-21,77
Cumulative annual rate	-8,55	-11,60	-48,05	-58,30	-38,04	-27,90

3. Number of travellers, overnight stays and average stay in Provinces with the greatest number of overnight stays¹

Provinces	Number of travellers			Number of overnight stays			Average stay
	Total	Residents In Spain	Residents abroad	Total	Residents In Spain	Residents abroad	
Cáceres	9.606	8.808	797	19.710	18.223	1.487	2,05
Girona	5.317	5.021	297	13.349	12.581	768	2,51
St Cruz de Tenerife	2.578	1.629	949	12.880	6.682	6.199	5,00
Gipúzkoa	3.438	3.336	103	9.279	8.343	935	2,70
Barcelona	3.303	3.286	17	7.821	7.770	52	2,37
León	3.172	3.120	52	6.805	6.650	155	2,15
Castellón\Castelló	2.401	2.401	0	6.171	6.171	0	2,57
Albacete	1.988	1.947	41	6.063	4.843	1.220	3,05
Salamanca	2.086	2.072	13	5.869	5.829	40	2,81
Málaga	1.464	1.229	235	5.010	4.070	940	3,42
Valencia\València	2.140	2.097	43	4.987	4.908	79	2,33
Huesca	2.021	1.997	24	4.644	4.612	32	2,30
Alicante\Alacant	1.711	1.603	108	4.528	4.299	229	2,65
Lleida	1.862	1.862	0	4.526	4.526	0	2,43
Ávila	1.191	1.141	50	4.491	4.351	140	3,77

¹ Provinces belonging to uniprovincial Autonomous Communities have not been included because they are reflected in previous tables.

4. Open rural establishments, bed-places, occupancy rates and employed personnel in Provinces with the highest number of overnight stays¹

Provinces	Estimated open rural establishments	Estimated bed-places	Occupancy rate			Employed personnel
			Of bed-places	Of bed-places at weekend	Of bedrooms	
Cáceres	509	5.725	11,09	25,33	14,73	700
Girona	462	4.956	8,67	13,37	12,91	563
St Cruz de Tenerife	441	2.418	17,13	19,00	27,69	494
Gipúzkoa	163	1.898	15,72	22,72	23,06	191
Barcelona	387	3.198	7,89	18,83	13,71	563
León	309	2.545	8,61	16,27	12,11	427
Castellón\Castelló	269	2.113	9,42	18,39	15,34	360
Albacete	617	3.999	4,89	10,66	8,88	783
Salamanca	451	3.308	5,72	10,70	10,27	588
Málaga	1.213	8.641	1,87	2,20	3,35	1.484
Valencia\València	209	2.151	7,47	15,09	15,26	334
Huesca	440	3.453	4,34	5,72	6,95	493
Alicante\Alacant	150	1.324	11,02	25,08	15,54	218
Lleida	356	2.660	5,49	10,79	7,04	516
Ávila	620	4.430	3,27	5,86	5,81	710

¹ Provinces belonging to uniprovincial Autonomous Communities have not been included because they are reflected in previous tables.

5. Number of travellers, overnight stays, average stay, capacity and occupancy rates in areas with the highest number of overnight stays

Areas	Number of travellers		Number of overnight stays			Capacity		Occupancy rate		
	Residents In Spain	Residents abroad	Residents In Spain	Residents abroad	Average stay	Estimated open rural establish.	Estimated bed-places	Of bed-places	Of bed-places at weekend	Of bedrooms
Extremadura Norte	7.171	628	14.067	1.163	1,95	328	3.727	13,16	30,65	17,33
Isla de Mallorca	1.800	1.836	4.059	8.778	3,53	138	2.513	16,39	25,00	21,82
Pirineus	4.783	0	11.816	0	2,47	526	4.563	8,34	14,44	11,86
Pirineo Navarro	2.580	77	7.507	1.929	3,55	622	4.818	6,31	11,62	8,94
Parque Nacional Sierra de Guadarrama	4.706	394	6.991	598	1,49	78	985	24,81	45,38	24,71
Costa Brava	2.281	297	6.174	768	2,69	296	3.013	7,43	10,41	11,84
Isla de La Palma	411	242	3.529	2.719	9,57	250	1.077	18,59	18,61	32,56
Pirineo Aragonés	2.054	2	4.338	2	2,11	382	3.096	4,52	7,66	6,56
Isla de Tenerife	908	557	1.882	2.031	2,67	89	789	16,00	21,75	20,09
Pirineo Vasco	1.421	14	3.437	445	2,70	107	1.207	10,33	13,74	13,48
Costa de Gipuzkoa	1.506	33	3.504	75	2,32	54	608	18,95	31,73	27,16
P.Natural de Corona Forestal	820	487	1.627	1.853	2,66	64	605	18,56	25,78	22,08
P.Nacional Teide	526	450	1.123	1.762	2,96	56	539	17,25	23,10	20,37
P.Natural Sierras de Tejeda, Almijara y Alhama	607	20	2.529	259	4,44	365	2.602	3,46	5,61	6,59
P.Nacional Taburiente	272	97	1.824	713	6,89	124	550	14,89	14,70	28,11

6. Number of travellers, overnight stays, average stay, capacity, occupancy rates and employed personnel per rural house by Autonomous City and Community²

Autonomous Communities	Number of travellers		Number of overnight stays			Capacity	Occupancy rate		Employed personnel	
	Residents In Spain	Residents abroad	Residents In Spain	Residents abroad	Average stay		Of bed-places	Of bed-places at weekend		
TOTAL	56.523	3.846	145.036	23.582	2,79	11.223	93.494	5,81	10,31	14.194
Andalucía	6.658	592	16.585	2.081	2,57	2.060	16.983	3,54	6,21	2.613
Aragón	3.224	174	8.696	1.216	2,92	751	5.751	5,56	8,84	844
Asturias, Principado de	-	-	-	-	-	-	-	-	-	-
Balears, Illes	1.185	1.234	2.732	6.242	3,71	76	1.094	26,28	32,72	181
Canarias	1.429	710	6.666	5.800	5,83	498	2.596	15,43	17,84	560
Cantabria	807	11	1.520	17	1,88	176	2.076	2,39	6,01	278
Castilla y León	6.753	143	19.553	942	2,97	2.474	17.856	3,70	6,70	2.935
Castilla-La Mancha	4.909	122	13.885	3.030	3,36	1.402	11.676	4,67	8,63	1.791
Cataluña	10.859	321	26.498	839	2,45	1.403	12.637	6,97	12,92	1.863
Comunitat Valenciana	6.099	145	15.372	234	2,50	624	5.530	9,10	18,82	907
Extremadura	4.020	111	9.177	180	2,27	418	3.889	7,76	16,03	505
Galicia	2.305	71	3.637	121	1,58	235	2.888	4,19	10,87	356
Madrid, Comunidad de	-	-	-	-	-	-	-	-	-	-
Murcia, Región de	1.081	3	2.686	31	2,50	125	1.688	5,19	12,06	195
Navarra, Comunidad Foral de	1.812	77	4.681	1.929	3,50	586	4.679	4,55	7,86	696
País Vasco	3.155	92	9.031	815	3,03	200	2.208	14,37	20,81	235
Rioja, La	410	38	803	105	2,03	90	924	3,17	5,44	98
Ceuta	-	-	-	-	-	-	-	-	-	-
Melilla	-	-	-	-	-	-	-	-	-	-

² To facilitate the comparability between data from different Autonomous Communities (and because of the different regulation and different characteristics), a group called rural house has been created, with those establishments with similar typology (location, capacity, etc...).

The variables included in the previous table have been estimated with that type of establishments.

9. Travellers and overnight stays by country of residence

Results by countries	Travellers		Overnight stays	
	Total	%	Total	%
TOTAL	96.547	100,00	241.491	100,00
Residents in Spain	89.715	92,92	210.179	87,03
Residents abroad	6.832	7,08	31.312	12,97
Total Residents abroad	6.832	100,00	31.312	100,00
TOTAL Residents in EU-27 (without Spain)	4.080	59,71	20.716	66,16
- Germany	1.720	25,17	11.226	35,85
- Belgium	71	1,04	248	0,79
- France	1.317	19,28	3.622	11,57
- Italy	174	2,54	817	2,61
- Netherlands	202	2,95	683	2,18
- Portugal	120	1,75	2.670	8,53
United Kingdom	380	5,57	2.502	7,99
Switzerland	110	1,61	581	1,85
Other European countries	673	9,85	2.687	8,58
United States of America	68	0,99	218	0,70
Other countries	1.998	29,25	6.058	19,35

RTOS (TABLES ANNEX) - March 2021. Provisional data (4/4)

**Tourist Accommodation Occupancy Survey
Hostels Occupancy Survey (HOS)**
March 2021

Provisional data

4th May 2021

1. Travellers, overnight stays and average stay by type of establishment

Type	Travellers			Overnight stays			Average stay
	Total	Residents in Spain	Residents abroad	Total	Residents in Spain	Residents abroad	
TOTAL	16.045	13.461	2.584	52.831	41.020	11.812	3,29
REAJ	11.524	9.917	1.607	33.525	25.520	8.006	2,91
Hostel for pilgrims	-	-	-	-	-	-	-
Tourist hostel	-	-	-	-	-	-	-
Annual rate	-53,23	-44,33	-76,45	-57,19	-50,69	-69,85	-8,47
Cumulative annual rate	-83,30	-81,81	-87,15	-77,17	-75,54	-79,87	36,69

2. Open establishments, capacity, occupancy and employed personnel by type of establishment

Type	Capacity		Occupancy rate		Employed personnel
	Estimated open establishments	Estimated bed-places	Of bed-places	Of bed-places at weekend	
TOTAL	501	31.108	5,48	6,98	1.713
REAJ	147	15.673	6,90	9,29	760
Hostel for pilgrims	-	-	-	-	-
Tourist hostel	-	-	-	-	-
Annual rate	31,68	24,25	-65,55	-61,60	-48,78
Cumulative annual rate	-20,15	-23,73	-51,42	-51,10	-52,74

3. Travellers, overnight stays and average stay by Autonomous Cities and Communities

Autonomous cities and communities	Travellers			Overnight stays			Average stay
	Total	Residents	Residents	Total	Residents	Residents	
		in Spain	abroad		in Spain	abroad	
TOTAL	16.045	13.461	2.584	52.831	41.020	11.812	3,29
Andalucía	2.651	2.490	161	11.465	10.850	615	4,32
Aragón	1.564	1.559	5	10.083	10.078	5	6,45
Asturias, Principado de	-	-	-	-	-	-	-
Balears, Illes	-	-	-	-	-	-	-
Canarias	912	213	698	4.961	337	4.624	5,44
Cantabria	-	-	-	-	-	-	-
Castilla y León	-	-	-	-	-	-	-
Castilla - La Mancha	-	-	-	-	-	-	-
Cataluña	5.073	4.651	423	11.051	9.708	1.343	2,18
Comunitat Valenciana	560	412	148	1.813	610	1.203	3,24
Extremadura	-	-	-	-	-	-	-
Galicia	-	-	-	-	-	-	-
Madrid, Comunidad de	1.661	1.386	275	3.214	2.715	499	1,94
Murcia, Región de	-	-	-	-	-	-	-
Navarra, Comunidad Foral de	325	321	4	2.349	610	1.739	7,22
País Vasco	2.564	1.796	768	5.652	4.220	1.432	2,20
Rioja, La	185	175	11	212	201	11	1,15
Ceuta	-	-	-	-	-	-	-
Melilla	-	-	-	-	-	-	-
Annual rate	-53,23	-44,33	-76,45	-57,19	-50,69	-69,85	-8,47
Cumulative annual rate	-83,30	-81,81	-87,15	-77,17	-75,54	-79,87	36,69

4. Open establishments, capacity, occupancy and number of staff by autonomous cities and communities

Autonomous cities and communities	Capacity		Occupancy rate		Employed personnel
	Estimated open establishments	Estimated bed-places	Of bed-places	Of bed-places	
			at weekend	at weekend	
TOTAL	501	31.108	5,48	6,98	1.713
Andalucía	51	4.399	8,41	10,67	265
Aragón	70	3.461	9,40	8,28	308
Asturias, Principado de	-	-	-	-	-
Balears, Illes	-	-	-	-	-
Canarias	24	583	27,43	38,49	38
Cantabria	-	-	-	-	-
Castilla y León	-	-	-	-	-
Castilla - La Mancha	-	-	-	-	-
Cataluña	17	2.747	12,98	17,48	177
Comunitat Valenciana	40	2.684	2,18	3,69	140
Extremadura	-	-	-	-	-
Galicia	-	-	-	-	-
Madrid, Comunidad de	5	562	18,45	29,14	136
Murcia, Región de	-	-	-	-	-
Navarra, Comunidad Foral de	37	2.057	3,68	6,32	43
País Vasco	49	3.786	4,82	5,72	142
Rioja, La	26	977	0,70	1,02	38
Ceuta	-	-	-	-	-
Melilla	-	-	-	-	-
Annual rate	31,68	24,25	-65,55	-61,60	-48,78
Cumulative annual rate	-20,15	-23,73	-51,42	-51,10	-52,74

5. Travellers and overnight stays by countries of residence

Countries	Travellers		Overnight stays		Average stay
	Total	%	Total	%	
TOTAL	16.045	100,00	52.831	100,00	3,29
Residents in Spain	13.461	83,90	41.020	77,64	3,05
Residents abroad	2.584	16,10	11.812	22,36	4,57
TOTAL residents abroad	2.584	100,00	11.812	100,00	4,57
TOTAL Residents in EU-27 (without Spain)	1.554	60,13	3.465	29,34	2,23
- Germany	147	5,71	325	2,75	2,20
- Belgium	58	2,24	154	1,30	2,66
- France	827	32,00	1.533	12,98	1,85
- Italy	175	6,77	479	4,05	2,74
- Netherlands	45	1,75	134	1,14	2,97
- Portugal	8	0,29	8	0,06	1,00
United Kingdom	93	3,62	149	1,26	1,59
Switzerland	23	0,90	42	0,35	1,79
Other European countries	324	12,54	909	7,70	2,81
United States of America	40	1,56	76	0,64	1,88
Other countries	843	32,63	8.004	67,77	9,49

HOS (TABLES ANNEX) - March 2021. Provisional data (3/3)

HOLIDAY DWELLING PRICE INDEX (HDPI)

March 2021

Provisional data

4th May 2021

National general index and breakdown by rates

	Index	Annual variation rate
TOTAL	113,85	-13,05
Normal	99,04	-13,34
Weekend	119,45	1,98
Tour-operators and travel agencies	124,23	-14,23

National general index and breakdown by modalities

	Index	Annual variation rate
TOTAL	113,85	-13,05
Studio	120,56	-18,31
Dwellings 2/4 bedplaces	112,52	-13,06
Dwellings 4/6 bedplaces	118,31	-6,26

HDPI (ANNEX OF TABLES) - March 2021. Provisional data

Tourist Campsite Price Index (TCSPI). 2002 Base

March 2021

Provisional data

4th May 2021

National general index and breakdown by rates

	Index	Annual variation rate
TOTAL	141,10	-2,03
Normal rate	128,57	-6,07
Special rate for stays up to one month	174,36	10,81
Special rate for stays longer than one month	153,26	-2,99
Bungalow rate ¹	102,08	-0,78

¹2014 Base

National general index and breakdown by categories

	Index	Annual variation rate
TOTAL	141,10	-2,03
Luxury and first	137,68	-2,49
Second	142,28	-1,23
Third	127,75	-7,83

TCSPI (ANNEX OF TABLES) - March 2021. Provisional data

Rural Tourism Accommodation Price Index (RTAPI)

March 2021

Provisional data

4th May 2021

General Autonomous Cities and Communities and national indices

	Index	Annual variation rate
TOTAL	139,94	1,22
Andalucía	141,90	6,42
Aragón	156,26	0,16
Asturias, Principado de	139,24	-4,93
Balears, Illes	118,39	7,02
Canarias	111,70	-5,65
Cantabria	177,62	1,15
Castilla y León	141,90	-2,12
Castilla - La Mancha	143,51	2,60
Cataluña	153,27	2,25
Comunitat Valenciana	150,67	0,55
Extremadura	98,88	0,46
Galicia	139,23	-2,79
Madrid, Comunidad de	148,22	1,01
Murcia, Región de	160,87	5,73
Navarra, Comunidad Foral de	165,51	4,03
País Vasco	145,24	-3,17
Rioja, La	183,77	11,69
Ceuta	-	-
Melilla	-	-

National general index and breakdown by rates

	Index	Annual variation rate
TOTAL	139,94	1,22
Normal	138,68	2,29
Weekend	142,79	0,49

National general index and breakdown by rent modality

	Index	Annual variation rate
TOTAL	139,94	1,22
Shared use (in case of per room rent modality)	118,00	-2,99
Full use (rent of entire dwelling)	150,74	2,90