

1 July 2019

**Non-hotel Tourist Accommodation Occupancy Survey**  
May 2019. Provisional data

**Overnight stays in non-hotel tourist accommodation decrease 2.1%  
in May, as compared to the same month of 2018**

Overnight stays in non-hotel tourist accommodation (apartments, tourist campsites, rural tourism accommodation and hostels) exceeded 9.0 million in May, 2.1% less than in the same month of 2018. Resident overnight stays increased 6.5% while non-resident overnight stays decreased 6.2%.

The average stay stood at 4.1 overnight stays per traveller.

During the first five months of 2019, overnight stays decreased by 1.6% as compared to the same period of the previous year.

Travellers and overnight stays in collective non-hotel tourist accommodation during the month of May were:

May 2019	Arrivals	Overnight stays
Residents	1,114,157	3,155,437
EU Residents (excluding Spain)	923,087	5,239,991
Rest of the world	170,207	646,233
<b>TOTAL</b>	<b>2,207,451</b>	<b>9,041,661</b>

**Holiday Dwellings**

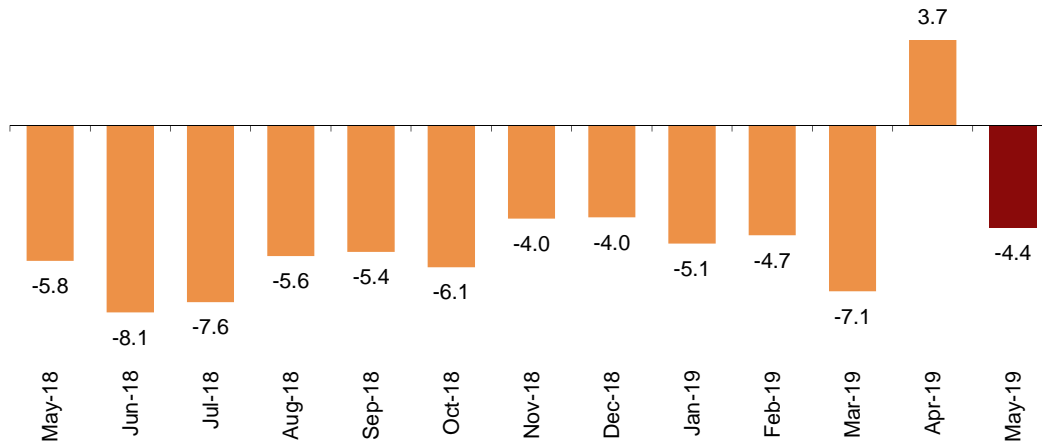
Overnight stays in holiday dwellings decreased by 4.4% in May. Overnight stays by residents increased 6.8%, while those by non-residents decreased by 7.4%.

It should be pointed out that the annual variation rates of overnight stays in holiday dwellings show negative growth over the last few months (with the exception of April 2019, when Easter took place), mainly due to the fact that there are holiday dwelling establishments that are being reclassified, becoming considered as private housing for holiday use and therefore leaving the scope of observation of the Holiday Dwellings Occupancy Survey (HDOS).

The average stay decreased by 4.9% as compared to May 2018, standing at 5.0 overnight stays per traveller.

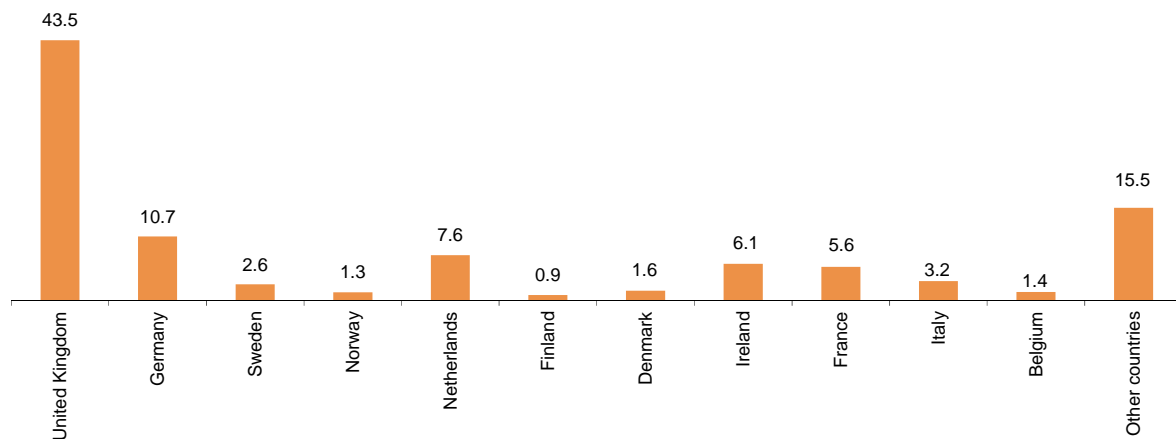
In May, 30.9% of the bed-places available for holiday dwellings were occupied, 4.9% less than in the same month of 2018. The weekend occupancy rate by bed-places stood at 34.9%, with a decrease of 3.6%.

**Annual variation rate for overnight stays**  
Percentage



Non-resident overnight stays in holiday dwellings represented 76.6% of the total. The United Kingdom was the main country of origin, with more than 1.7 million overnight stays, 4.1% less than in May 2018. The following country of origin was Germany, with 432,530 overnight stays, 29.3% less.

**Distribution of non-residents overnight stays. Main country of residence**  
Percentage



Canarias was the preferred destination for holiday dwellings, with more than 1.8 million overnight stays and a decrease of 6.4% compared to May 2018. Comunidad de Madrid reached the highest occupancy rate, with 73.3% of holiday dwellings offered.

By tourist areas, the island of Tenerife was the preferred destination, with 638,949 overnight stays. The island of Lanzarote registered the highest occupancy rate, with 71.7% of holiday dwellings offered.

The tourist sites with the greatest number of overnight stays in May were San Bartolomé de Tirajana, Arona and Tías.

## Tourist Campsites

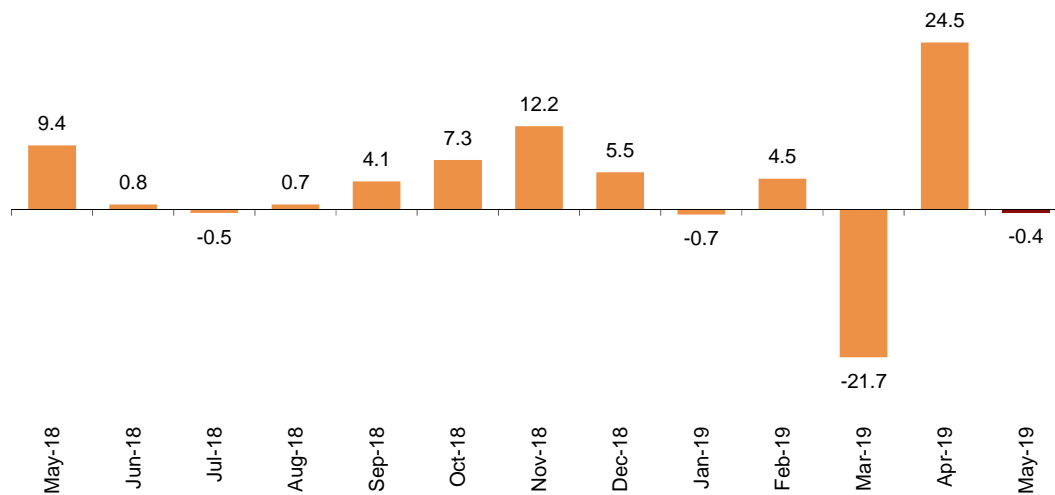
Overnight stays at tourist campsites registered a decrease of 0.4% in May as compared with the same month of the previous year. Overnight stays by residents increased 3.4%, while those by non-residents decreased by 3.4%.

During the month of May, 33.3% of the offered pitches were occupied, 0.7% less than in the same month of 2018. The weekend occupancy rate by pitch reached 35.7%, with an annual decrease of 0.5%.

54.7% of overnight stays on tourist campsites were made by non-residents. The Netherlands was the main country of origin, with 25.1% of the overnight stays by non-residents, 3.4% more than in May 2018.

### Annual variation rate for overnight stays

Percentage



Cataluña was the preferred destination for tourist campsites, with 1.2 million overnight stays, representing an annual decrease of 6.0%. La Rioja reached the highest occupancy rate, with 64.1% of the pitches offered.

By tourist area, Costa Daurada was the preferred destination, with 462,510 overnight stays. On the other hand, Costa Blanca reached the highest occupancy rate, with 65.8% of the pitches offered.

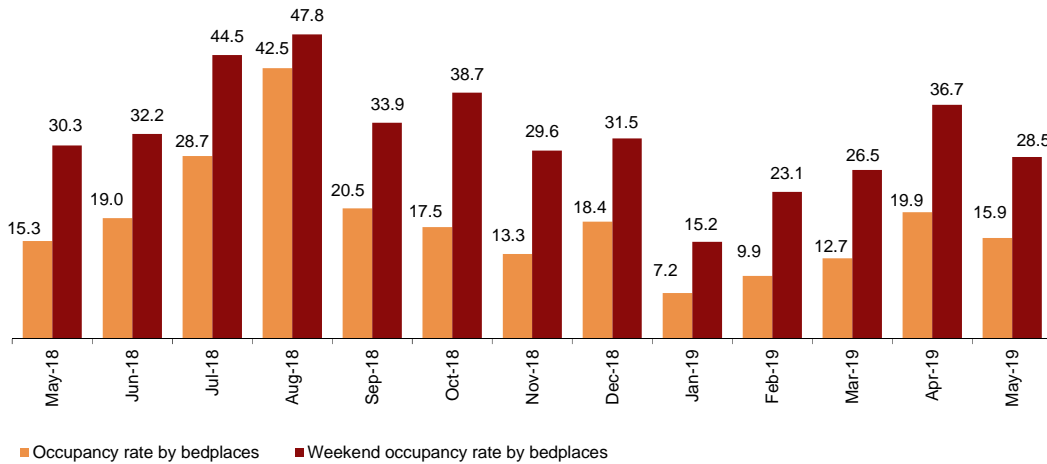
The tourist sites with the highest number of overnight stays were Benidorm, Mont-Roig Del Camp and Tarragona.

### Rural tourism accommodation

Overnight stays in rural tourism accommodation presented an annual increase of 7.0% in May. Overnight stays by residents increased 16.1%, while those by non-residents decreased by 6.5%.

In rural tourism accommodation, 15.9% of the bed-places were occupied in May, 3.7% more than in the same month of 2018. The weekend occupancy rate stood at 28.5%, with an annual decrease of 6.0%.

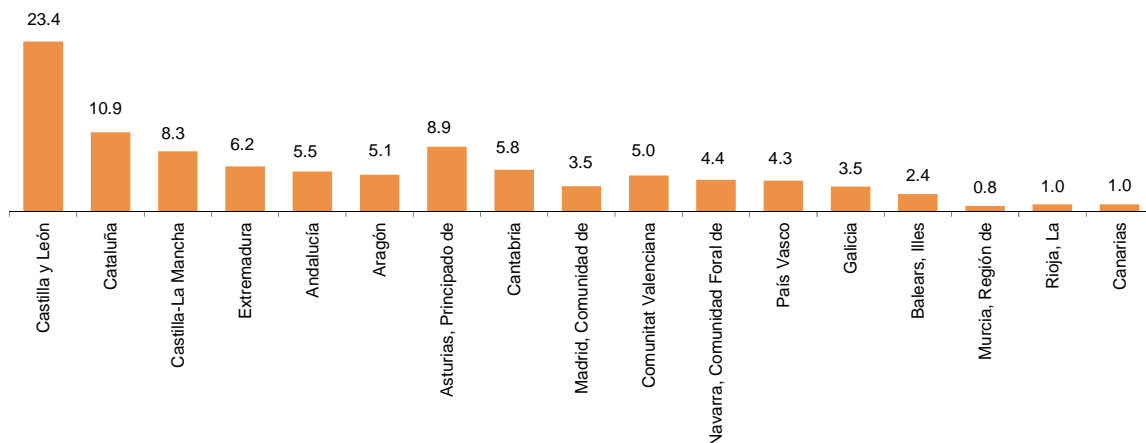
## Occupancy rate Percentage



By Autonomous Community, Castilla y León was the preferred destination, with 146,428 overnight stays, 19.9% more than in May 2018. Illes Balears reached the highest occupancy rate, with 43.8% of the bed-places offered.

By tourist area, the island of Mallorca was the preferred destination, with 111,824 overnight stays. The island of Menorca registered the highest occupancy rate, with 45.7% of the bed-places offered.

## Distribution of overnight stays: residents Percentage

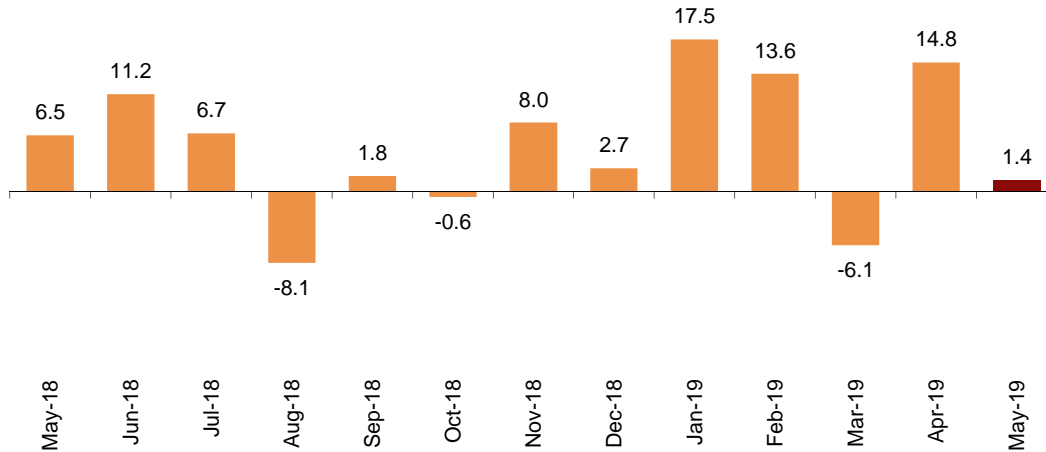


### Hostels

Overnight stays in hostels registered an annual increase of 1.4% in May. Overnight stays by residents dropped by 1.1%, whilst those by non-residents increased by 6.8%.

#### Annual variation rate for overnight stays

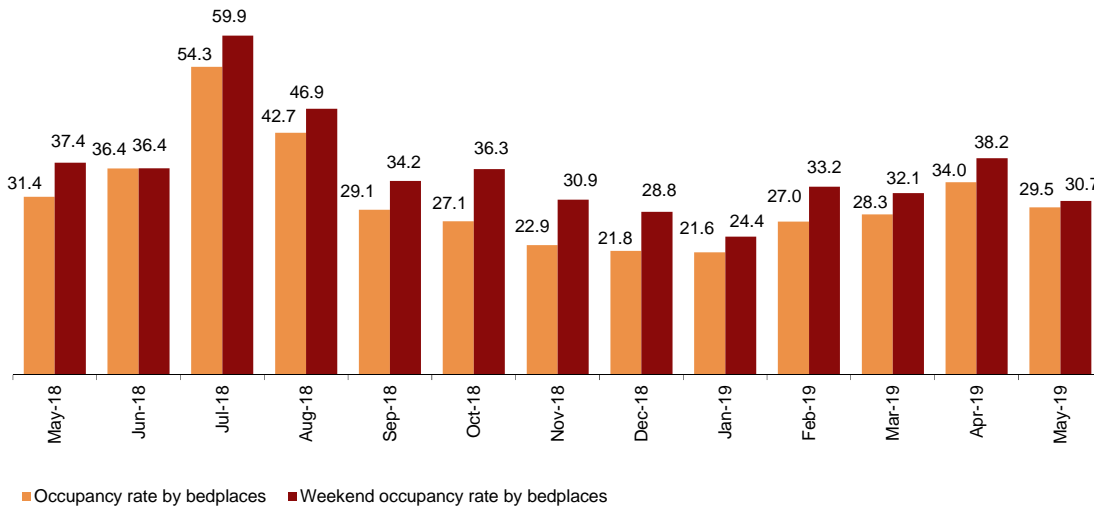
Percentage



29.5% of the available bed-places were occupied, 4.0% less than in May 2018. The weekend occupancy rate reached 30.7%, with a 14.1% decrease.

#### Occupancy rate

Percentage



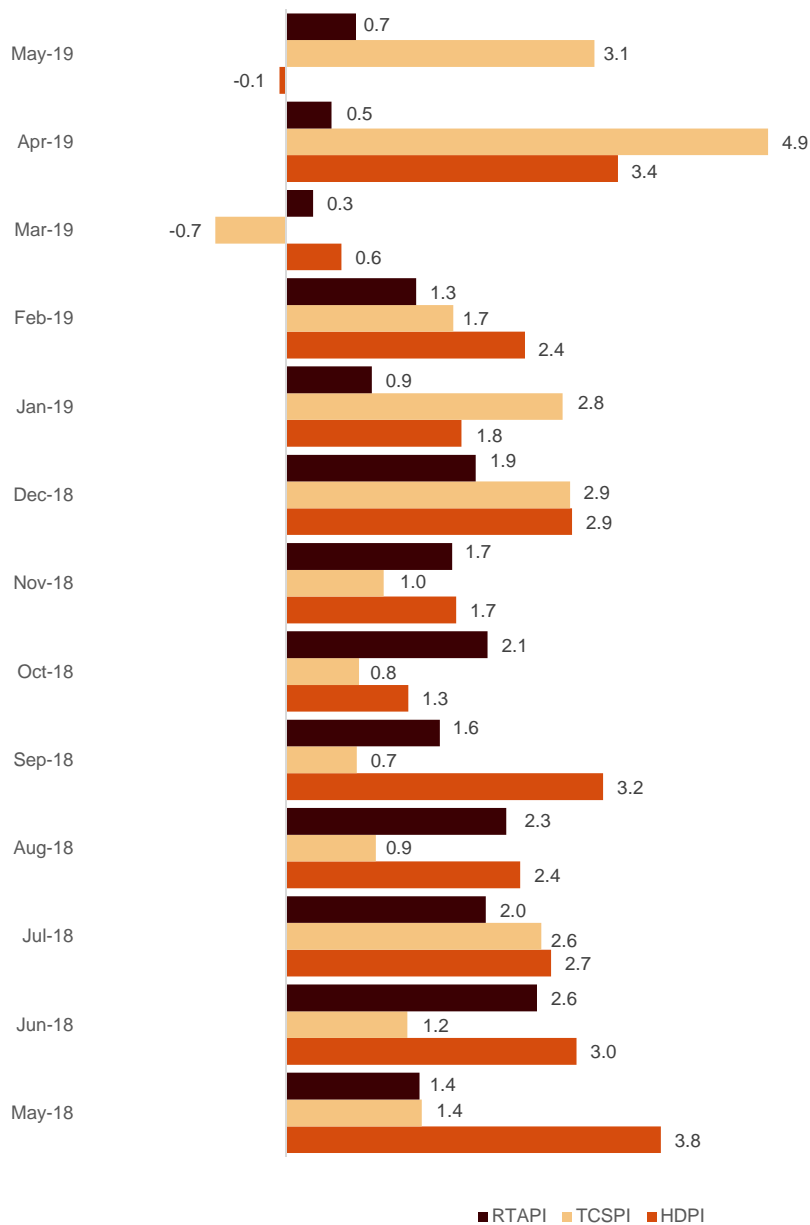
By Autonomous Community, Cataluña was the preferred destination, with 93,728 overnight stays, 5.1% less than in May 2018. Comunidad de Madrid reached the highest occupancy rate, with 52.5% of the bed-places offered.

**Price indices**

The Holiday Dwelling Price Index (HDPI) decreased by 0.1% in May compared to the same month of 2018.

On the other hand, the Tourist Campsite Price Index (TCPI) increased by 3.1% in the annual rate and the Rural Tourism Accommodation Price Index (RTAPI) increased by 0.7%.

**Prices Indices. Annual variation rate**  
Percentage



## Evolution of travellers and overnight stays in all Spanish collective tourist accommodation

In May, overnight stays in Spanish collective tourist accommodation (hotels<sup>1</sup>, holiday dwellings, tourist campsites, rural tourism accommodation and youth hostels) registered a 0.2% decrease in the annual rate. Overnight stays by residents increased 6.5%, while those by non-residents decreased by 3.0%.

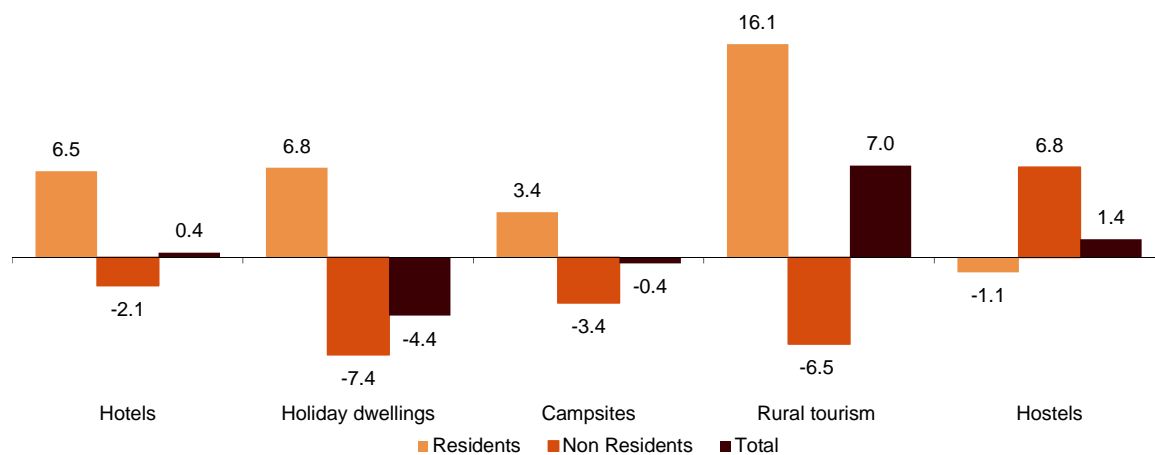
The average stay decreased by 5.0% in May, and stood at 3.2 overnight stays per traveller.

Travellers and overnight stays in collective tourist accommodation were:

May 2019	Holiday dwellings	Campsites	Rural T.	Hostels	Non-hotel	Hotels	Total
<b>Arrivals</b>	1,063,489	665,745	367,517	110,702	2,207,453	10,562,869	12,770,322
Residents	376,809	389,879	269,545	77,924	1,114,157	4,579,288	5,693,445
Non-residents	686,679	275,865	97,972	32,778	1,093,294	5,983,581	7,076,875
<b>Overnight stays</b>	4,854,236	2,630,283	853,157	257,503	8,595,179	32,040,448	40,635,627
Residents	1,240,192	1,191,279	552,082	171,884	3,155,437	9,787,095	12,942,532
Non-residents	4,060,526	1,439,003	301,075	85,620	5,886,224	22,253,353	28,139,577

Of the total overnight stays made in collective tourist accommodation, 79% corresponded to hotels and 21% to non-hotel tourist accommodation.

### Overnight stays in collective tourist accommodation. Annual variation rate Percentage



The main countries of origin for all regulated tourist accommodation were the United Kingdom (with 30.3% of the total number of non-resident overnight stays), Germany (18.1%) and France (8.7%).

Illes Balears was the preferred destination, with over 8.3 million overnight stays (4.5% less than in May 2018). It was followed by Cataluña, with 7.2 million overnight stays (and a decrease of 2.2%) and Canarias, with over 6.8 million (and an annual decrease of 4.7%).

<sup>1</sup> The press release corresponding to the Hotel Tourism Short-Term Trends was published on 21 June.

## Revision and updating of data

Coinciding with today's publication, the INE has updated the data for May 2018 of the Occupancy Surveys in: Holiday Dwellings (HDOS), Campsites (COS), Rural Tourism Accommodation (RTAOS) and Hostels (HOS). As well as the Holiday Dwelling Price Index (HDPI), the Tourist Campsite Price Index (TCPI) and the Rural Tourism Accommodation Price Index (RTAPI).

## Methodological note

The main objective of the Holiday Dwelling Occupancy Survey (HDOS) is to ascertain the behaviour of a series of variables that make it possible to describe the segment that occupies this type of accommodation within the tourist sector, both from the point of view of supply and demand.

The Holiday Dwelling Price Index (HDPI) is a statistical measure of the monthly evolution of the prices that holiday dwelling establishments apply to their clients.

**Type of operation:** monthly continuous survey.

**Population scope:** holiday dwellings and/or companies operating holiday dwellings.

**Geographical scope:** the entire national territory, with the exception of Ceuta and Melilla where there are no establishments of this type.

**Reference period of the results:** the month.

**Reference period of the information:** The consultation of basic data refers to a fortnight of the month, chosen randomly, in such a way that among all the establishments they cover the complete month.

**Type of sampling:** stratified sampling by province and size of establishment, and for Canarias and Illes Balears stratified at island-size level.

**Collection method:** questionnaire filled in directly by the establishment.

For more information on these statistical operations, you can consult the [methodology and the standardised methodological report](#) for each of them in INEbase.

The main objective of the Campsite Occupancy Survey (COS) is to ascertain the behaviour of a series of variables that make it possible to describe the segment that occupies this type of accommodation within the tourist sector, both from the point of view of supply and demand.

The Tourist Campsite Price Index (TCPI) is a statistical measure of the monthly evolution of the prices that campsites apply to their clients.

**Type of operation:** monthly continuous survey.

**Population scope:** camping establishments.

**Geographical scope:** the entire national territory, with the exception of Ceuta and Melilla where there are no establishments of this type.

**Reference period of the results:** the month.



**Reference period of the information:** seven consecutive days of each month, chosen randomly in such a way that all the establishments cover the whole month.

**Sample size:** approximately 1200 establishments.

**Type of sampling:** comprehensive survey in all provinces.

**Collection method:** questionnaire filled in directly by the establishment.

For more information on these statistical operations, you can consult the [methodology and the standardised methodological report](#) for each of them in INEbase.

The main objective of the Rural Tourism Accommodation Occupancy Survey (RTAOS) is to ascertain the behaviour of a series of variables that make it possible to describe the fundamental characteristics of this type of accommodation within the tourist sector, both from the point of view of supply and demand.

The Rural Tourism Accommodation Price Index (RTAPI) is a statistical measure of the monthly evolution of the prices that entrepreneurs of this type of accommodation apply to their clients.

**Type of operation:** monthly continuous survey.

**Population scope:** rural tourism establishments registered as such in the corresponding register of each Autonomous Community.

**Geographical scope:** the entire national territory, with the exception of Ceuta and Melilla where there are no establishments of this type.

**Reference period of the results:** the month.

**Reference period of the information:** The consultation of basic data refers to all the days of the month.

**Type of sampling:** comprehensive survey in all provinces except those where the population size is large enough to take a sample.

**Collection method:** questionnaire filled in directly by the establishment.

For more information on these statistical operations, you can consult the [methodology and the standardised methodological report](#) for each of them in INEbase.

The main objective of the Hostels Occupancy Survey (HOS) is to ascertain the behaviour of a series of variables that make it possible to describe the fundamental characteristics of this type of accommodation within the tourist sector, both from the point of view of supply and demand.

For more information on this statistical operation, you can consult the [methodology and the standardised methodological report](#) in INEbase.

---

For further information see **INEbase:** [www.ine.es/en/](http://www.ine.es/en/) Twitter: [@es\\_ine](https://twitter.com/es_ine)

All press releases at: [www.ine.es/en/prensa/prensa\\_en.htm](http://www.ine.es/en/prensa/prensa_en.htm)

**Press office:** Telephone numbers: (+34) 91 583 93 63 /94 08 – [gprensa@ine.es](mailto:gprensa@ine.es)

**Information Area:** Telephone number: (+34) 91 583 91 00 – [www.ine.es/infoine/?L=1](http://www.ine.es/infoine/?L=1)

---

## Tourist Accommodation Occupancy Survey (Holiday Dwellings)

May 2019

Provisional data

1st July 2019

### 1. Travellers, overnight stays and average stay by Autonomous Cities and Communities

Autonomous Cities and Communities	Travellers			Overnight stays			Average stay
	Total	Residents in Spain	Residents abroad	Total	Residents in Spain	Residents abroad	
<b>TOTAL</b>	1,063,489	376,809	686,679	5,300,718	1,240,192	4,060,526	4.98
Andalucía	248,126	106,904	141,222	886,317	273,418	612,899	3.57
Aragón	13,029	10,627	2,402	33,467	24,823	8,644	2.57
Asturias, Principado de	4,408	3,965	443	13,183	12,353	830	2.99
Balears, Illes	174,579	27,935	146,643	955,024	91,837	863,187	5.47
Canarias	257,206	60,706	196,500	1,879,995	253,749	1,626,246	7.31
Cantabria	10,911	9,867	1,044	28,381	25,701	2,680	2.60
Castilla y León	15,450	12,417	3,033	32,712	26,086	6,626	2.12
Castilla - La Mancha	10,727	10,039	688	32,208	30,592	1,616	3.00
Cataluña	90,550	31,042	59,509	422,866	141,900	280,966	4.67
Comunitat Valenciana	137,680	48,146	89,534	670,644	177,278	493,367	4.87
Extremadura	8,657	6,968	1,689	17,021	13,346	3,674	1.97
Galicia	9,736	7,518	2,218	32,931	28,299	4,632	3.38
Madrid, Comunidad de	51,457	22,724	28,733	172,293	73,676	98,617	3.35
Murcia, Región de	8,556	5,785	2,770	51,809	34,889	16,920	6.06
Navarra, Comunidad Foral de	7,083	4,670	2,413	17,210	9,771	7,439	2.43
País Vasco	11,815	5,039	6,777	48,159	17,609	30,550	4.08
Rioja, La	3,519	2,458	1,061	6,499	4,866	1,633	1.85
Ceuta	-	-	-	-	-	-	-
Melilla	-	-	-	-	-	-	-
Annual rate	0.56	13.58	-5.39	-4.39	6.78	-7.35	-4.92
Cumulative annual rate	0.28	5.45	-2.30	-3.52	1.50	-4.74	-3.79

### 2. Capacity, occupancy and number of staff by Autonomous Cities and Communities

Autonomous Cities and Communities	Capacity		Level of occupancy				Employed personnel
	Estimated bedplaces	Estimated Holiday dwelling	Per bedplaces	Per bedplaces at weekend	Per Holiday dwelling	Per Holiday dwelling at weekend	
<b>TOTAL</b>	550,813	144,402	30.92	34.85	49.38	53.87	30,536
Andalucía	82,876	20,999	34.51	41.07	52.46	60.10	5,019
Aragón	7,713	1,714	13.97	24.87	22.40	34.34	494
Asturias, Principado de	4,297	1,101	9.87	17.83	12.55	21.58	304
Balears, Illes	68,523	21,752	44.60	45.99	59.80	61.13	5,540
Canarias	139,277	42,898	43.28	45.46	62.50	65.44	10,546
Cantabria	5,382	1,426	16.99	27.41	24.55	36.67	433
Castilla y León	5,948	1,376	17.69	32.14	26.92	41.64	548
Castilla - La Mancha	5,563	1,403	18.64	31.69	27.91	40.71	475
Cataluña	62,316	13,907	21.90	26.39	37.21	42.70	1,681
Comunitat Valenciana	133,149	27,752	16.23	18.85	30.29	33.84	3,195
Extremadura	2,942	657	18.64	32.76	28.77	46.16	383
Galicia	4,585	1,241	23.05	30.18	35.56	43.64	314
Madrid, Comunidad de	11,001	4,075	50.20	56.39	73.25	77.54	579
Murcia, Región de	9,475	2,179	17.64	21.50	31.61	36.37	266
Navarra, Comunidad Foral de	1,916	444	28.81	41.04	47.12	60.17	391
País Vasco	4,244	1,131	36.47	45.78	58.12	67.61	270
Rioja, La	1,608	347	13.03	25.63	24.92	43.68	98
Ceuta	-	-	-	-	-	-	-
Melilla	-	-	-	-	-	-	-
Annual rate	0.77	0.59	-4.85	-3.57	-3.10	-2.49	-2.55
Cumulative annual rate	0.25	0.01	-3.60	-2.17	-2.60	-1.66	-0.83

### 3. Travellers, overnight stays, capacity, occupancy, total number of staff with greater number of overnight stays<sup>1</sup>

Provinces	Travellers		Overnight stays			Capacity		Level of occupancy			Employed personnel
	Residents in Spain	Residents abroad	Residents in Spain	Residents abroad	Average stay	Estimated bed-places	Estimated holiday dwelling	Per bed-places	Per Holiday dwelling	Per Holiday dwelling at weekend	
Palmas, Las	35,564	125,893	142,588	1,049,586	7.38	87,484	26,574	43.70	64.52	67.51	6,585
St Cruz de Tenerife	25,142	70,607	111,161	576,660	7.18	51,793	16,324	42.56	59.20	62.08	3,961
Málaga	32,393	94,346	90,061	487,186	4.55	47,078	11,899	39.49	60.31	64.78	3,017
Alicante\Alacant	17,815	62,317	79,048	380,263	5.73	92,416	19,427	16.03	30.75	33.57	2,225
Barcelona	7,970	24,730	77,485	105,231	5.59	9,893	2,918	59.50	79.73	83.11	452
Valencia\València	14,664	25,001	38,296	91,221	3.27	16,758	3,732	24.83	41.84	46.87	616
Tarragona	12,742	17,761	32,354	93,558	4.13	20,547	4,272	19.73	34.28	42.75	577
Girona	9,407	16,932	29,569	81,756	4.23	29,408	6,176	12.22	21.58	26.31	588
Sevilla	19,617	24,130	43,238	59,561	2.35	6,534	1,874	50.18	71.51	77.30	516
Castellón\Castelló	15,667	2,216	59,933	21,883	4.58	23,975	4,593	11.01	18.99	24.40	354
Almería	16,568	4,079	49,346	20,560	3.39	11,074	2,543	20.87	34.01	44.27	332
Cádiz	11,812	4,986	28,753	15,046	2.61	6,273	1,609	22.54	34.26	51.70	368
Granada	8,547	10,378	19,924	23,642	2.30	5,136	1,411	27.18	39.76	50.21	426
Gipuzkoa	1,892	5,257	6,762	24,606	4.39	2,503	640	40.28	55.44	65.67	158
Huelva	8,950	589	24,090	1,893	2.72	3,041	685	27.56	38.30	61.88	108

<sup>1</sup> Provinces belonging to uniprovincial Autonomous Communities have not been included because they are reflected in previous tables.

### 4. Travellers, overnight stays, capacity, occupancy, total number of staff from tourist areas with greater number of overnight stays

Tourist Areas	Travellers		Overnight stays			Capacity		Level of occupancy			Employed personnel
	Residents in Spain	Residents abroad	Residents in Spain	Residents abroad	Average stay	Estimated bed-places	Estimated holiday dwelling	Per bed-places	Per Holiday dwelling	Per Holiday dwelling at weekend	
Isla de Tenerife	20,449	67,635	95,661	543,288	7.25	45,634	14,281	44.87	62.14	64.82	3,451
Isla de Gran Canaria	22,332	55,921	81,689	490,122	7.31	43,045	13,282	42.77	62.59	66.48	3,095
Isla de Mallorca	7,484	79,611	21,955	544,626	6.51	33,843	11,596	53.40	67.23	67.64	2,778
Costa del Sol	27,550	87,935	82,364	467,641	4.76	44,036	11,073	40.17	61.46	65.89	2,896
Costa Blanca	17,029	62,176	77,857	379,563	5.78	90,940	19,114	16.22	31.14	33.83	2,155
Isla de Lanzarote	6,755	53,777	35,108	421,593	7.54	30,801	9,021	47.45	71.71	73.45	2,494
Islas de Ibiza-Formentera	13,361	49,138	44,987	217,315	4.20	20,482	6,481	41.23	56.20	59.10	1,990
Isla de Fuerteventura	6,477	16,195	25,790	137,871	7.22	13,638	4,271	38.18	55.32	58.16	997
Isla de Menorca	7,090	17,894	24,895	101,247	5.05	14,198	3,676	28.48	42.68	44.17	773
Costa Daurada	11,840	17,504	30,843	91,997	4.19	19,127	3,932	20.67	36.46	45.13	550

### 5. Travellers, overnight stays, capacity, occupancy, total number of staff from tourist sites with greater number at overnights stays

Tourist sites	Travellers		Overnight stays			Capacity		Level of occupancy			Employed personnel
	Residents in Spain	Residents abroad	Residents in Spain	Residents abroad	Average stay	Estimated bed-places	Estimated holiday dwelling	Per bed-places	Per Holiday dwelling	Per Holiday dwelling at weekend	
San Bartolomé de Tirajana	16,676	33,224	63,152	294,337	7.16	28,195	9,124	40.83	60.09	64.70	2,086
Arona	2,972	34,749	15,615	273,546	7.67	18,482	6,066	50.23	62.56	63.49	1,466
Tías	3,027	30,359	15,140	244,139	7.77	15,632	4,814	53.04	75.78	77.82	1,138
Benidorm	4,143	37,974	22,039	194,198	5.13	25,673	5,931	27.16	53.68	58.75	671
Mogán	5,143	22,062	17,317	174,838	7.06	14,045	3,782	44.00	67.58	69.94	966
Adeje	2,550	19,645	15,782	170,633	8.40	13,003	3,764	45.88	67.98	69.21	902
Madrid	19,185	28,455	63,856	97,227	3.38	9,617	3,676	53.65	75.33	78.19	514
Alcúdia	3,069	22,001	7,082	139,974	5.87	7,675	2,730	59.33	67.54	68.18	680
Calvià	1,775	19,692	6,026	139,246	6.77	7,974	2,857	58.68	77.43	80.18	623
Teguise	3,105	13,865	16,983	104,744	7.17	8,337	2,440	46.76	70.67	71.94	612

## 6. Travellers and overnight stays by countries of residence

Countries	Travellers		Overnight stays	
	Total	%	Total	%
TOTAL	1,063,489	100.00	5,300,718	100.00
Residents in Spain	376,809	35.43	1,240,192	23.40
Residents abroad	686,679	64.57	4,060,526	76.60
Total residents abroad	686,679	100.00	4,060,526	100.00
Total residents in E.U (excluding Spain)	578,864	84.30	3,581,398	88.20
- Germany	53,104	7.73	432,530	10.65
- Austria	3,785	0.55	17,222	0.42
- Belgium	9,211	1.34	56,377	1.39
-Denmark	10,625	1.55	65,876	1.62
- Finland	5,958	0.87	35,924	0.88
- France	51,650	7.52	227,085	5.59
- Greece	808	0.12	3,337	0.08
- Ireland	40,924	5.96	247,984	6.11
- Italy	33,986	4.95	129,800	3.20
- Luxembourg	555	0.08	3,167	0.08
- Netherlands	49,959	7.28	306,655	7.55
- Poland	10,520	1.53	57,534	1.42
- Portugal	4,945	0.72	18,779	0.46
- United Kingdom	269,322	39.22	1,767,586	43.53
- Czech Republic	3,485	0.51	19,505	0.48
- Sweden	15,921	2.32	107,565	2.65
- Other EU countries	14,106	2.05	84,473	2.08
Norway	7,423	1.08	54,694	1.35
Russia	12,209	1.78	73,668	1.81
Switzerland	6,945	1.01	38,101	0.94
Other european countries	8,534	1.24	45,869	1.13
United States of America	19,990	2.91	72,140	1.78
Rest of America	22,521	3.28	95,160	2.34
African countries	2,936	0.43	13,199	0.33
Other countries	27,257	3.97	86,296	2.13

**Tourist Accommodation Occupancy Survey  
Campsite Occupancy Survey (COS)**

May 2019

Provisional data

1st July 2019

**1. Travellers, overnight stays and average stay by category of establishment**

Category	Travellers			Overnight stays			Average stay
	Total	Residents in Spain	Residents abroad	Total	Residents in Spain	Residents abroad	
TOTAL	665,745	389,879	275,865	2,630,283	1,191,279	1,439,003	3.95
Luxury and first-class	311,468	172,069	139,399	1,241,790	551,562	690,228	3.99
Second-class	304,332	180,968	123,364	1,242,772	541,233	701,539	4.08
Third-class	49,945	36,842	13,102	145,721	98,485	47,236	2.92
Annual rate	11.75	15.84	6.44	-0.44	3.43	-3.43	-10.91
Cumulative annual rate	6.96	8.32	4.64	1.75	5.00	-0.51	-4.87

**2. Open establishments, capacity, occupancy and number of staff by category of establishments**

Category	Estimated open establishments	Capacity		Occupied pitches	Occupancy rate per pitch	Weekend occupancy rate	Employed personnel
		Estimated bedplaces	Estimated pitches				
TOTAL	895	624,034	190,331	1,966,709	33.33	35.73	8,062
Luxury and first-class	250	275,679	81,745	832,119	32.84	35.83	3,695
Second-class	500	294,444	92,021	962,157	33.73	36.10	3,767
Third-class	145	53,911	16,565	172,432	33.58	33.58	599
Annual rate	1.03	0.27	0.02	-0.66	-0.68	-0.45	4.02
Cumulative annual rate	-0.89	-0.95	-0.76	-0.05	0.80	1.88	1.00

**3. Travellers, overnight stays and average stay by Autonomous Cities and Communities**

Autonomous cities and communities	Travellers			Overnight stays			Average stay
	Total	Residents in Spain	Residents abroad	Total	Residents in Spain	Residents abroad	
TOTAL	665,745	389,879	275,865	2,630,283	1,191,279	1,439,003	3.95
Andalucía	84,288	46,498	37,790	276,991	132,605	144,386	3.29
Aragón	25,040	10,487	14,553	58,009	25,606	32,403	2.32
Asturias, Principado de	7,568	3,586	3,982	25,428	18,666	6,762	3.36
Balears, Illes	4,087	2,372	1,715	18,898	6,780	12,118	4.62
Canarias	3,360	2,991	369	10,301	6,003	4,298	3.07
Cantabria	19,180	11,126	8,054	66,168	50,694	15,475	3.45
Castilla y León	24,710	11,072	13,639	48,504	23,680	24,824	1.96
Castilla - La Mancha	9,473	5,483	3,990	23,288	11,755	11,533	2.46
Cataluña	309,222	203,560	105,661	1,204,354	603,720	600,634	3.89
Comunitat Valenciana	87,975	43,375	44,601	636,695	175,348	461,347	7.24
Extremadura	10,423	5,810	4,612	24,599	12,210	12,389	2.36
Galicia	8,391	3,610	4,781	16,990	8,947	8,042	2.02
Madrid, Comunidad de	25,060	16,514	8,546	76,829	46,980	29,849	3.07
Murcia, Región de	10,276	6,173	4,103	59,135	16,905	42,230	5.75
Navarra, Comunidad Foral de	9,960	6,154	3,806	25,934	20,790	5,144	2.60
País Vasco	17,260	4,658	12,602	38,655	16,578	22,076	2.24
Rioja, La	9,471	6,410	3,061	19,506	14,012	5,494	2.06
Ceuta	-	-	-	-	-	-	-
Melilla	-	-	-	-	-	-	-

#### 4. Open establishments, capacity, occupancy and number of staff by autonomous cities and communities

Autonomous cities and communities	Estimated open establishments	Capacity		Occupied pitches	Occupancy rate per pitch	Weekend occupancy rate	Employed personnel
		Estimated bedplaces	Estimated pitches				
<b>TOTAL</b>	895	624,034	190,331	1,966,709	33.33	35.73	8,062
Andalucía	131	77,601	24,818	170,185	22.12	27.10	994
Aragón	83	30,098	9,092	58,710	20.83	25.09	415
Asturias, Principado de	24	14,441	4,641	26,355	18.32	21.63	116
Balears, Illes	7	2,823	1,247	8,829	22.84	23.71	93
Canarias	5	3,645	1,477	7,929	17.31	20.41	30
Cantabria	34	25,988	8,207	100,647	39.56	37.74	222
Castilla y León	53	22,715	6,926	44,987	20.95	26.05	187
Castilla - La Mancha	27	10,908	3,266	25,189	24.88	25.05	119
Cataluña	249	265,598	77,825	827,517	34.30	37.25	3,514
Comunitat Valenciana	127	79,861	24,786	400,813	52.17	52.51	1,293
Extremadura	25	9,855	3,200	22,177	22.35	26.02	149
Galicia	41	15,311	4,901	22,633	14.90	16.13	152
Madrid, Comunidad de	20	17,794	6,036	97,336	52.02	51.26	247
Murcia, Región de	16	14,590	4,804	38,516	25.86	28.07	180
Navarra, Comunidad Foral de	24	13,808	3,453	33,652	31.44	34.33	152
País Vasco	21	10,906	3,191	32,312	32.67	33.35	132
Rioja, La	9	8,091	2,462	48,922	64.11	60.75	66
Ceuta	-	-	-	-	-	-	-
Melilla	-	-	-	-	-	-	-

#### 5. Travellers and overnight stays, average stay, capacity, occupancy and number of staff by provinces with the greatest number of overnight stays<sup>1</sup>

Provinces	Travellers		Overnight stays		Average stay	Estimated open establishments	Estimated pitches	Occupancy rate per pitch	Employed personnel
	Residents in Spain	Residents abroad	Residents in Spain	Residents abroad					
	Tarragona	72,329	31,202	270,520					
Girona	63,648	49,410	172,600	272,443	3.94	102	34,245	27.69	1,706
Alicante/Alacant	17,062	24,219	88,078	308,775	9.61	51	11,528	60.89	717
Barcelona	61,225	22,824	146,436	91,027	2.83	50	13,897	45.35	524
Castellón/Castelló	9,245	12,553	33,666	104,857	6.35	40	6,857	42.94	294
Valencia/València	17,067	7,828	53,604	47,715	4.07	36	6,401	46.33	283
Málaga	10,058	8,868	28,943	54,769	4.42	31	5,061	33.69	248
Cádiz	11,869	8,698	33,362	25,948	2.88	23	5,906	17.41	227
Huelva	11,039	2,419	31,342	12,078	3.23	9	4,462	16.43	134
Almería	3,997	4,372	18,519	18,014	4.37	19	2,812	26.68	125
Huesca	7,753	7,796	17,642	15,675	2.14	54	6,542	22.19	303
Granada	3,487	6,377	7,577	18,999	2.69	22	2,747	23.91	100
Gipuzkoa	2,740	7,814	5,970	15,605	2.04	11	1,871	26.72	66
Lleida	6,358	2,225	14,164	4,470	2.17	38	5,860	27.94	149
Zaragoza	1,006	5,153	4,593	11,190	2.56	14	1,349	20.26	63

<sup>1</sup> Provinces belonging to uniprovincial Autonomous Communities have not been included because they are reflected in previous tables.

**6. Travellers, overnight stays, average stay, open establishments, capacity, occupancy and number of staff from tourist areas with the greatest number of overnight stays**

Tourist areas	Travellers		Overnight stays		Average stay	Estimated open establishments	Estimated pitches	Occupancy rate per pitch	Employed personnel
	Residents in Spain	Residents abroad	Residents in Spain	Residents abroad					
Costa Daurada	68,267	27,092	249,826	212,684	4.85	46	20,871	40.65	1,011
Costa Brava	55,994	48,643	158,576	269,973	4.10	83	32,228	27.07	1,627
Costa Blanca	15,115	18,403	71,511	254,991	9.74	42	9,165	65.78	650
Costa Barcelona	51,658	22,564	130,944	90,416	2.98	31	11,553	45.90	424
Costa de Aiguamolls de l'Empordà	4,797	18,180	43,940	120,485	7.16	17	7,668	32.77	466
Costa de Castellón	7,427	11,802	27,617	100,806	6.68	32	6,153	44.58	262
Costa Valencia	10,723	5,303	38,794	39,666	4.90	19	4,388	49.68	195
Costa del Sol	7,935	5,204	24,931	46,657	5.45	15	3,702	36.54	190
Costa de la Luz (Cádiz)	11,392	7,474	32,221	22,603	2.91	20	5,340	16.54	213
Costa Cálida	3,329	3,295	10,746	38,212	7.39	8	3,741	25.88	144
Costa de la Luz (Huelva)	10,638	1,950	30,501	10,875	3.29	7	4,317	15.71	125
Terres de l'Ebre	4,063	4,110	20,694	20,010	4.98	13	2,952	26.76	124
Pirineus	19,233	2,583	33,740	5,667	1.81	63	8,691	32.48	277
Costa de Almería	3,264	4,205	17,124	16,043	4.44	16	2,479	25.40	107
Pirineo Aragonés	7,450	7,604	17,162	15,609	2.18	50	6,294	21.10	297

**7. Travellers, overnight stays, average stay, open establishments, capacity, occupancy and number of staff from tourist sites with the greatest number at overnights stays**

Tourist sites	Travellers		Overnight stays		Average stay	Estimated open establishments	Estimated pitches	Occupancy rate per pitch	Employed personnel
	Residents in Spain	Residents abroad	Residents in Spain	Residents abroad					
Benidorm	1,771	6,933	10,221	163,522	19.96	11	4,239	80.59	369
Mont-roig del Camp	5,638	6,396	24,525	75,900	8.35	6	4,272	35.60	170
Tarragona	14,064	3,864	62,374	19,949	4.59	6	3,011	38.95	241
Castelló d'Empúries	1,969	3,980	23,765	38,125	10.40	4	2,675	37.27	149
Cambrils	8,397	4,679	27,698	30,160	4.43	6	3,123	43.93	103
Sant Pere Pescador	1,493	8,398	3,947	48,450	5.30	5	2,531	30.96	225
Torroella de Montgrí	1,980	6,559	6,377	41,516	5.61	8	3,096	34.80	188
Blanes	11,665	4,967	19,671	26,535	2.78	10	3,091	42.78	194
Oliva	3,040	2,262	19,609	23,486	8.13	6	1,434	48.77	97
Roda de Berà	4,554	1,605	25,815	16,386	6.85	3	2,005	39.21	58
Peñíscola/Peñíscola	1,139	5,052	5,574	36,163	6.74	8	1,340	46.94	47
Calonge	6,113	3,216	18,168	19,271	4.01	4	3,289	12.66	151

### 8. Travellers and overnight stays by countries of residence

Countries	Travellers		Overnight stays	
	Total	%	Total	%
TOTAL	665,745	100.00	2,630,283	100.00
Residents in Spain	389,879	58.56	1,191,279	45.29
Residents abroad	275,865	41.44	1,439,003	54.71
TOTAL residents abroad	275,865	100.00	1,439,003	100.00
TOTAL residents in EU (excluding Spain)	254,057	92.09	1,367,755	95.05
- Germany	52,304	18.96	235,873	16.39
- Austria	2,919	1.06	8,381	0.58
- Belgium	10,007	3.63	68,701	4.77
- Denmark	897	0.33	6,207	0.43
- Finland	430	0.16	3,334	0.23
- France	66,493	24.10	235,377	16.36
- Greece	132	0.05	239	0.02
- Ireland	7,469	2.71	45,254	3.14
- Italy	5,619	2.04	16,912	1.18
- Luxembourg	495	0.18	2,306	0.16
- Netherlands	55,960	20.29	361,312	25.11
- Poland	2,169	0.79	9,846	0.68
- Portugal	1,878	0.68	4,882	0.34
- United Kingdom	43,783	15.87	354,054	24.60
- Czech Republic	628	0.23	1,889	0.13
- Sweden	1,111	0.40	6,748	0.47
- Other EU countries	1,761	0.64	6,441	0.45
Norway	500	0.18	4,400	0.31
Russia	558	0.20	2,562	0.18
Switzerland	9,323	3.38	29,414	2.04
Other European countries	2,800	1.02	8,991	0.62
United States of America	1,062	0.39	2,429	0.17
Rest of America	1,772	0.64	4,480	0.31
African countries	646	0.23	2,856	0.20
Other countries	5,147	1.87	16,116	1.12

COS (TABLES ANNEX) - May 2019. Provisional data (4/4)



**Tourist accommodation occupancy survey  
(Rural tourist accommodation)**

May 2019

Provisional data

1st July 2019

**1. Number of travellers, overnight stays and average stay by Autonomous City and Community**

Autonomous Communities	Number of travellers			Number of overnight stays			Average stay
	Total	Residents In Spain	Residents abroad	Total	Residents In Spain	Residents abroad	
<b>TOTAL</b>	367,517	269,545	97,972	853,157	552,082	301,075	2.32
Andalucía	29,890	14,710	15,180	96,897	30,620	66,277	3.24
Aragón	14,639	12,643	1,995	35,964	27,947	8,017	2.46
Asturias, Principado de	22,401	19,891	2,510	55,567	49,298	6,268	2.48
Balears, Illes	36,064	5,229	30,835	135,250	13,375	121,875	3.75
Canarias	4,731	2,167	2,563	19,331	5,675	13,656	4.09
Cantabria	18,442	15,488	2,954	37,791	31,845	5,946	2.05
Castilla y León	76,141	64,433	11,708	146,428	129,057	17,371	1.92
Castilla-La Mancha	24,129	22,095	2,034	48,756	45,780	2,976	2.02
Cataluña	38,096	32,366	5,730	74,654	60,325	14,329	1.96
Comunitat Valenciana	16,252	14,435	1,817	34,779	27,382	7,397	2.14
Extremadura	18,153	15,707	2,446	40,310	34,365	5,945	2.22
Galicia	23,528	12,331	11,196	36,216	19,228	16,988	1.54
Madrid, Comunidad de	13,076	12,437	639	20,408	19,434	975	1.56
Murcia, Región de	3,059	2,338	721	6,140	4,392	1,748	2.01
Navarra, Comunidad Foral de	10,720	9,536	1,184	27,027	24,226	2,801	2.52
País Vasco	15,021	10,879	4,142	31,393	23,505	7,888	2.09
Rioja, La	3,175	2,859	316	6,247	5,630	617	1.97
Ceuta	-	-	-	-	-	-	-
Melilla	-	-	-	-	-	-	-
Annual rate	7.32	12.62	-4.98	6.95	16.12	-6.54	-0.34
Cumulative annual rate	1.97	2.50	-0.29	0.60	2.62	-4.72	-1.34

**2. Open rural establishments, bed-places, occupancy rates and employed personnel by Autonomous City and Community**

Autonomous Communities	Estimated open rural establishments	Estimated bed-places	Occupancy rate			Employed personnel
			Of bed-places	Of bed-places at weekend	Of bedrooms	
<b>TOTAL</b>	17,685	172,919	15.86	28.53	19.76	26,570
Andalucía	2,463	20,637	15.12	20.78	22.63	3,560
Aragón	1,218	9,566	12.07	25.02	14.90	1,378
Asturias, Principado de	1,441	14,416	12.41	22.30	14.68	2,007
Balears, Illes	505	9,928	43.77	43.38	49.37	2,679
Canarias	532	3,306	18.85	21.73	29.30	785
Cantabria	474	7,678	15.77	33.62	18.45	821
Castilla y León	3,610	32,126	14.68	31.45	18.25	4,818
Castilla-La Mancha	1,701	14,630	10.72	26.50	13.22	2,157
Cataluña	2,019	18,108	13.26	34.56	15.86	2,664
Comunitat Valenciana	876	10,577	10.57	13.26	12.81	1,287
Extremadura	641	7,772	16.70	32.58	21.40	1,015
Galicia	500	6,437	18.04	25.43	20.38	891
Madrid, Comunidad de	237	3,628	18.09	41.68	25.74	666
Murcia, Región de	157	2,536	7.80	16.70	9.60	248
Navarra, Comunidad Foral de	823	6,299	13.80	29.45	17.53	1,011
País Vasco	382	4,204	23.95	41.11	27.99	474
Rioja, La	107	1,071	18.64	46.53	19.00	109
Ceuta	-	-	-	-	-	-
Melilla	-	-	-	-	-	-
Annual rate	2.85	3.17	3.65	-6.02	4.89	3.41
Cumulative annual rate	2.05	1.74	-0.99	-2.25	0.18	3.59

### 3. Number of travellers, overnight stays and average stay in Provinces with the greatest number of overnight stays<sup>1</sup>

Provinces	Number of travellers			Number of overnight stays			Average stay
	Total	Residents In Spain	Residents abroad	Total	Residents In Spain	Residents abroad	
Málaga	9,976	3,171	6,806	54,027	7,889	46,138	5.42
Cáceres	14,946	13,025	1,921	33,120	28,746	4,374	2.22
Girona	16,778	13,709	3,069	32,720	25,022	7,698	1.95
Barcelona	12,716	10,828	1,889	26,443	21,943	4,500	2.08
León	15,231	9,641	5,590	23,023	17,072	5,951	1.51
Ávila	10,147	9,805	343	21,667	20,944	723	2.14
Segovia	10,495	9,914	580	21,537	20,574	963	2.05
Burgos	11,513	8,709	2,804	21,484	17,249	4,236	1.87
Valencia\València	8,473	7,760	714	18,292	15,703	2,589	2.16
Huesca	7,025	5,762	1,262	17,146	12,552	4,594	2.44
Gipuzkoa	7,311	4,956	2,355	16,519	11,883	4,636	2.26
Salamanca	7,622	6,957	666	16,390	14,703	1,687	2.15
Soria	7,242	6,944	298	15,967	14,394	1,573	2.20
St Cruz de Tenerife	3,236	1,406	1,830	15,045	4,141	10,904	4.65
Coruña, A	8,789	3,792	4,997	14,076	5,432	8,644	1.60

<sup>1</sup> Provinces belonging to uniprovincial Autonomous Communities have not been included because they are reflected in previous tables.

### 4. Open rural establishments, bed-places, occupancy rates and employed personnel in Provinces with the highest number of overnight stays<sup>1</sup>

Provinces	Estimated open rural establishments	Estimated bed-places	Occupancy rate			Employed personnel
			Of bed-places	Of bed-places at weekend	Of bedrooms	
Málaga	1,439	9,763	17.81	18.69	28.59	1,962
Cáceres	524	6,369	16.74	32.64	21.01	843
Girona	631	6,563	16.02	40.91	18.80	712
Barcelona	591	5,235	16.23	43.15	19.65	974
León	475	3,866	19.16	30.02	23.95	715
Ávila	771	6,222	11.22	29.51	14.17	900
Segovia	437	4,051	17.10	43.37	19.83	626
Burgos	413	4,066	17.01	34.81	22.75	471
Valencia\València	245	4,165	14.08	11.67	15.16	376
Huesca	655	4,961	11.11	21.94	13.66	731
Gipuzkoa	171	1,946	27.26	41.30	32.56	219
Salamanca	538	4,268	12.38	25.28	15.36	697
Soria	313	3,058	16.78	35.40	19.22	381
St Cruz de Tenerife	430	2,443	19.86	21.86	32.02	596
Coruña, A	145	1,857	24.19	28.76	27.58	263

<sup>1</sup> Provinces belonging to uniprovincial Autonomous Communities have not been included because they are reflected in previous tables.

**5. Number of travellers, overnight stays, average stay, capacity and occupancy rates in areas with the highest number of overnight stays**

Areas	Number of travellers		Number of overnight stays			Capacity		Occupancy rate		
	Residents In Spain	Residents abroad	Residents In Spain	Residents abroad	Average stay	Estimated open rural establish.	Estimated bed-places	Of bed-places	Of bed-places at weekend	Of bedrooms
Isla de Mallorca	3,064	25,382	8,081	103,743	3.93	421	8,275	43.40	41.70	49.05
Sierras de Tejeda, Almijara y Alhama	744	4,572	1,914	23,874	4.85	487	2,975	27.95	27.39	47.21
Costa Brava	9,973	2,841	18,162	7,167	1.98	403	4,206	19.36	46.40	23.06
Extremadura Norte	10,153	873	22,754	2,186	2.26	352	4,386	18.33	35.90	22.73
Pirineus	10,611	425	20,084	920	1.90	760	6,427	10.49	31.00	12.12
Pirineo Navarro	7,716	753	19,086	1,259	2.40	699	5,204	12.58	28.53	16.25
Costa Verde (Asturias)	7,272	881	17,155	2,268	2.38	515	5,663	11.04	20.12	13.20
P.Nacional Picos de Europa	5,595	1,001	14,256	2,172	2.49	304	2,904	18.22	30.74	20.54
Pirineo Aragonés	5,200	1,303	11,759	4,524	2.50	613	4,723	11.09	22.32	13.68
Isla de Menorca	1,821	2,927	4,415	9,099	2.85	50	952	45.69	42.74	50.99
Islas de Ibiza-Formentera	344	2,525	879	9,033	3.45	34	701	45.58	64.03	50.71
Costa del Sol (Málaga)	1,303	687	2,891	7,014	4.98	254	1,699	18.60	21.43	21.35
Parque Nacional Sierra de Guadarrama	5,696	303	8,737	448	1.53	113	1,551	19.05	44.23	27.09
Pirineo Vasco	3,484	741	7,366	1,446	2.09	118	1,311	21.54	41.30	24.26
Costa Barcelona	2,732	446	6,370	1,222	2.39	142	1,359	18.00	36.10	25.50

**6. Number of travellers, overnight stays, average stay, capacity, occupancy rates and employed personnel per rural house by Autonomous City and Community<sup>2</sup>**

Autonomous Communities	Number of travellers		Number of overnight stays			Average stay	Capacity		Occupancy rate		Employed personnel
	Residents In Spain	Residents abroad	Residents In Spain	Residents abroad	Estimated open rural establish.		Estimated bed-places	Of bed-places	Of bed-places at weekend		
<b>TOTAL</b>	<b>171,461</b>	<b>50,952</b>	<b>365,967</b>	<b>173,177</b>	<b>2.42</b>	<b>15,040</b>	<b>126,451</b>	<b>13.72</b>	<b>26.97</b>	<b>19,531</b>	
Andalucía	14,641	15,063	30,449	66,029	3.25	2,460	20,502	15.15	20.83	3,553	
Aragón	10,538	1,693	23,576	6,667	2.47	987	7,612	12.74	26.40	1,120	
Asturias, Principado de	7,331	751	17,252	2,283	2.42	903	6,151	10.23	19.71	1,037	
Balears, Illes	2,379	9,485	5,627	34,782	3.41	173	2,803	46.34	49.35	560	
Canarias	878	1,338	3,573	9,713	5.99	506	2,627	16.30	18.21	636	
Cantabria	4,902	212	10,359	1,938	2.40	230	3,068	12.92	29.36	349	
Castilla y León	35,773	1,534	82,666	5,443	2.36	3,215	23,882	11.89	27.92	3,742	
Castilla-La Mancha	21,006	1,991	43,780	2,929	2.03	1,668	13,759	10.92	26.81	2,109	
Cataluña	32,366	5,730	60,325	14,329	1.96	2,019	18,108	13.26	34.56	2,664	
Comunitat Valenciana	5,921	1,653	12,654	6,504	2.53	823	7,415	8.33	14.58	1,058	
Extremadura	7,674	1,044	16,113	3,142	2.21	415	4,084	15.18	30.78	578	
Galicia	7,312	6,698	11,957	11,437	1.67	362	4,358	17.22	24.02	568	
Madrid, Comunidad de	1,668	0	4,971	0	2.98	92	995	16.10	39.66	98	
Murcia, Región de	1,515	348	3,057	885	2.12	142	2,120	5.99	15.68	196	
Navarra, Comunidad Foral de	8,356	734	21,242	1,945	2.55	702	5,342	13.96	30.29	864	
País Vasco	6,343	2,359	12,736	4,534	1.98	235	2,552	21.67	39.53	292	
Rioja, La	2,859	316	5,630	617	1.97	107	1,071	18.64	46.53	109	
Ceuta	-	-	-	-	-	-	-	-	-	-	
Melilla	-	-	-	-	-	-	-	-	-	-	

<sup>2</sup> To facilitate the comparability between data from different Autonomous Communities (and because of the different regulation and different characteristics),

a group called rural house has been created, with those establishments with similar typology (location, capacity, etc...).

The variables included in the previous table have been estimated with that type of establishments.

## 9. Travellers and overnight stays by country of residence

Results by countries	Travellers		Overnight stays	
	Total	%	Total	%
TOTAL	367,517	100.00	853,157	100.00
Residents in Spain	269,545	73.34	552,082	64.71
Residents abroad	97,972	26.66	301,075	35.29
Total Residents abroad	97,972	100.00	301,075	100.00
Total Residents in EU (excluding Spain)	70,555	72.02	241,624	80.25
- Germany	20,102	20.52	82,147	27.28
- Belgium	2,407	2.46	7,791	2.59
- France	12,974	13.24	30,187	10.03
- Italy	2,450	2.50	6,052	2.01
- Netherlands	7,816	7.98	28,487	9.46
- Portugal	1,580	1.61	3,244	1.08
- United Kingdom	14,272	14.57	52,407	17.41
Switzerland	2,369	2.42	9,255	3.07
Other European countries	12,759	13.02	41,394	13.75
United States of America	7,034	7.18	13,348	4.43
Other countries	14,209	14.50	26,762	8.89

**Tourist Accommodation Occupancy Survey  
Hostels Occupancy Survey (HOS)**

May 2019

Provisional data

1st July 2019

**1. Travellers, overnight stays and average stay by Autonomous Cities and Communities**

Autonomous cities and communities	Travellers			Overnight stays			Average stay
	Total	Residents in Spain	Residents abroad	Total	Residents in Spain	Residents abroad	
<b>TOTAL</b>	110,702	77,924	32,778	257,503	171,884	85,620	2.33
Andalucía	15,954	13,910	2,044	42,569	37,618	4,951	2.67
Aragón	4,091	3,626	465	9,151	7,775	1,376	2.24
Asturias, Principado de	296	255	41	788	674	114	2.66
Balears, Illes	2,147	509	1,638	6,920	1,844	5,076	3.22
Canarias	2,133	732	1,402	8,036	1,899	6,137	3.77
Cantabria	2,060	1,767	293	4,469	3,963	506	2.17
Castilla y León	5,126	4,437	689	11,106	9,756	1,350	2.17
Castilla - La Mancha	4,452	4,237	215	9,400	9,080	319	2.11
Cataluña	40,533	26,170	14,362	93,728	55,949	37,779	2.31
Comunitat Valenciana	9,834	5,076	4,758	25,710	11,166	14,544	2.61
Extremadura	1,524	1,439	85	3,915	3,757	158	2.57
Galicia	-	-	-	-	-	-	-
Madrid, Comunidad de	4,852	2,426	2,426	10,302	4,443	5,859	2.12
Murcia, Región de	1,729	1,160	568	4,501	3,265	1,236	2.60
Navarra, Comunidad Foral de	3,518	2,108	1,410	6,925	4,320	2,605	1.97
País Vasco	10,724	8,997	1,727	17,232	14,390	2,843	1.61
Rioja, La	1,439	798	641	2,014	1,345	669	1.40
Ceuta	-	-	-	-	-	-	-
Melilla	-	-	-	-	-	-	-
Annual rate	-7.25	-8.51	-4.12	1.38	-1.12	6.80	9.30
Cumulative annual rate	-4.60	-9.04	6.17	6.55	2.88	14.48	11.69

**2. Open establishments, capacity, occupancy and number of staff by autonomous cities and communities**

Autonomous cities and communities	Capacity		Occupancy rate		Employed personnel
	Estimated open establishments	Estimated bed-places	Of bed-places	Of bed-places at weekend	
<b>TOTAL</b>	264	28,139	29.52	30.68	1,958
Andalucía	19	3,968	34.61	37.33	276
Aragón	22	1,952	15.12	16.18	101
Asturias, Principado de	4	321	7.92	14.02	39
Balears, Illes	5	474	47.09	46.37	46
Canarias	29	703	36.89	29.65	60
Cantabria	8	602	23.95	21.13	42
Castilla y León	23	2,158	16.60	22.04	175
Castilla - La Mancha	27	3,203	9.47	11.20	131
Cataluña	50	6,725	44.96	41.82	442
Comunitat Valenciana	12	2,088	39.71	43.24	112
Extremadura	11	860	14.68	11.33	49
Galicia	-	-	-	-	-
Madrid, Comunidad de	6	633	52.50	60.47	162
Murcia, Región de	5	489	29.69	39.50	23
Navarra, Comunidad Foral de	12	994	22.48	20.12	79
País Vasco	18	1,955	28.44	33.92	136
Rioja, La	7	399	16.30	30.05	17
Ceuta	-	-	-	-	-
Melilla	-	-	-	-	-
Annual rate	5.32	5.63	-4.02	-14.14	1.27
Cumulative annual rate	2.99	2.14	4.49	-1.99	0.41

### 3. Travellers and overnight stays by countries of residence

Countries	Travellers		Overnight stays		Average stay
	Total	%	Total	%	
TOTAL	110,702	100.00	257,503	100.00	2.33
Residents in Spain	77,924	70.39	171,884	66.75	2.21
Residents abroad	32,778	29.61	85,620	33.25	2.61
TOTAL residents abroad	32,778	100.00	85,620	100.00	2.61
TOTAL residents in E.U. (excluding Spain)	19,611	59.83	49,214	57.48	2.51
- Germany	3,179	9.70	9,197	10.74	2.89
- Belgium	698	2.13	2,124	2.48	3.04
- France	5,238	15.98	11,717	13.68	2.24
- Italy	2,573	7.85	6,754	7.89	2.62
- Netherlands	961	2.93	2,274	2.66	2.37
- Portugal	1,067	3.25	2,020	2.36	1.89
- United Kingdom	2,993	9.13	7,831	9.15	2.62
Switzerland	493	1.50	1,342	1.57	2.72
Other European countries	5,070	15.47	12,652	14.78	2.50
United States of America	2,407	7.34	6,222	7.27	2.58
Other countries	8,099	24.71	23,487	27.43	2.90

## HOLIDAY DWELLING PRICE INDEX (HDPI)

May 2019

Provisional data

1st July 2019

### National general index and breakdown by rates

	Index	Annual variation rate
TOTAL	138.05	-0.06
Normal	127.83	-1.23
Weekend	136.95	5.03
Tour-operators and travel agencies	148.86	-0.01

### National general index and breakdown by modalities

	Index	Annual variation rate
TOTAL	138.05	-0.06
Studio	136.82	-1.44
Dwellings 2/4 bedplaces	136.01	0.62
Dwellings 4/6 bedplaces	149.53	-1.17

## Tourist Campsite Price Index (TCSPI). 2002 Base

May 2019

Provisional data

1st July 2019

### National general index and breakdown by rates

	Index	Annual variation rate
TOTAL	148.33	3.15
Normal rate	142.64	0.79
Special rate for stays up to one month	169.32	4.65
Special rate for stays longer than one month	157.92	2.26
Bungalow rate <sup>1</sup>	104.87	5.70

<sup>1</sup>2014 Base

### National general index and breakdown by categories

	Index	Annual variation rate
TOTAL	148.33	3.15
Luxury and first	143.66	3.64
Second	149.28	2.50
Third	187.00	4.31

TCSPI (ANNEX OF TABLES) - May 2019. Provisional data



## Rural Tourism Accommodation Price Index (RTAPI)

**May**

Provisional data

1st July 2019

### General Autonomous Cities and Communities and national indices

	Index	Annual variation rate
TOTAL	140.37	0.72
Andalucía	137.31	3.74
Aragón	166.74	-0.52
Asturias, Principado de	156.00	5.04
Balears, Illes	124.28	-2.54
Canarias	115.67	-0.16
Cantabria	158.12	-0.14
Castilla y León	132.46	2.12
Castilla - La Mancha	141.81	-1.83
Cataluña	158.41	5.27
Comunitat Valenciana	158.39	-1.74
Extremadura	103.59	-2.57
Galicia	128.89	4.26
Madrid, Comunidad de	145.89	0.81
Murcia, Región de	141.31	10.08
Navarra, Comunidad Foral de	163.37	-9.96
País Vasco	159.81	5.72
Rioja, La	134.97	5.45
Ceuta	-	-
Melilla	-	-

### National general index and breakdown by rates

	Index	Annual variation rate
TOTAL	140.37	0.72
Normal	138.97	0.27
Weekend	143.14	1.09

### National general index and breakdown by rent modality

	Index	Annual variation rate
TOTAL	140.37	0.72
Shared use (in case of per room rent modality)	128.59	-2.30
Full use (rent of entire dwelling)	150.21	2.92