

1 July 2020

Non-hotel Tourist Accommodation Occupancy Survey
May 2020. Provisional data

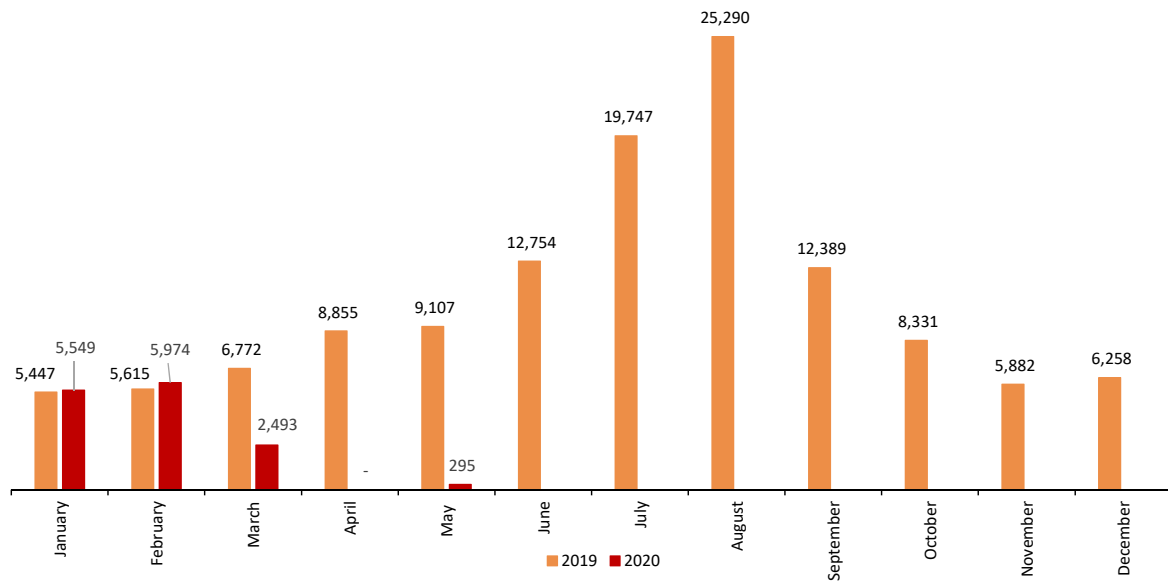
Overnight stays in non-hotel tourist accommodation decrease by 96.8% in May, as compared with the same month of 2019

COVID-19's effects on the Non-Hotel Tourist Accommodation Occupancy Survey in May

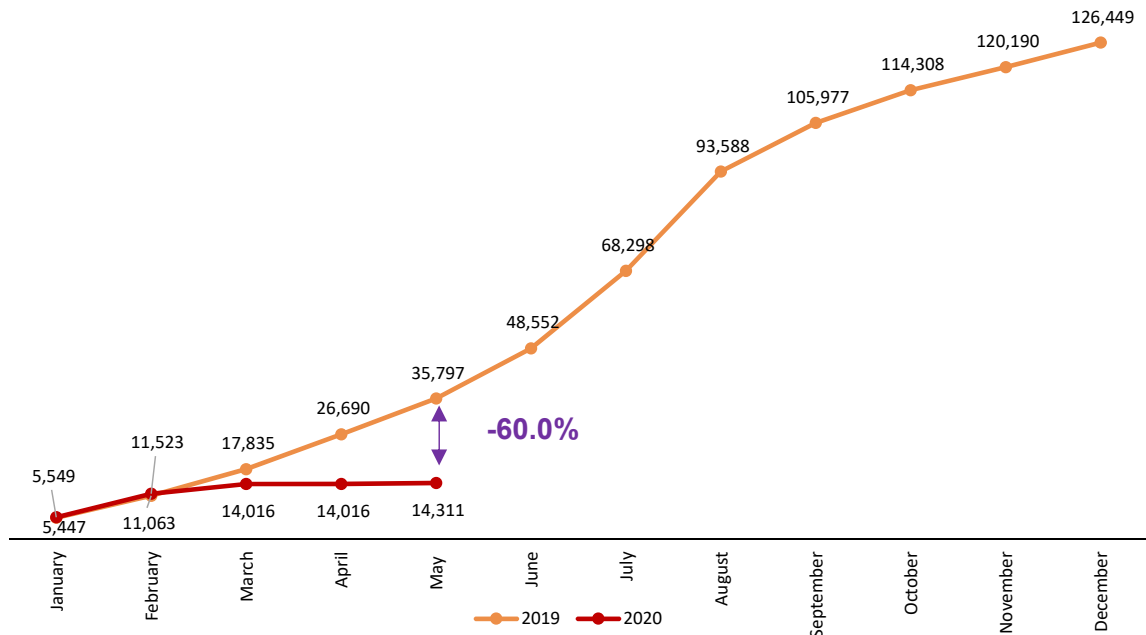
- In accordance with Order SND/399/2020¹, from May 11th onwards hotels and tourist accommodation were able to open to the public with certain restrictions, as the territories in which they were located reached at least Phase 1 of the plan for the transition to a “new normality.”
- However, given the restrictions on population mobility as part of the state of alarm, during May in Spain only 19,647 of the almost 178,765 non-hotel accommodation establishments (tourist apartments, camping sites, rural tourism accommodation and tourist hostels) were open, 88.1% less than for the same month in 2019. The total number of bed-places offered was 150,698, or 9.8% of the total.
- During the month of May, 42,150 travellers stayed in a non-hotel tourist accommodation, with a total of 295,170 overnight stays. This represents 1.9% of the total travellers and 3.2% of the total overnight stays estimated a year ago. Tourist apartments were the most popular, followed by camping sites.
- In the January-May , there were 14.3 million overnight stays in Tourist accommodations, 60.0% less than the same period for 2019.
- The Autonomous Community offering the most bed-places in non-hotel accommodations at start of de-escalation was Comunitat Valenciana, with 38,486 bed-places, 83.0% less than in May 2019. Comunidad de Madrid served the most travellers, with 6,301 travellers making 34,952 overnight stays.
- Due to the low number of open accommodations, less information than usual is being released today. In apartments, campsites and rural tourism, data is offered at the national level and by Autonomous Community. For hostels, information is available only at the national level. These figures are the only ones meeting the quality criteria for release. Provincial, area and tourist point information, as well as price indices for Apartments, Camping sites and Rural Tourism Accommodations, are not disclosed in this press release.

¹ Order SND/399/2020, of May 9, for the relaxation of certain national restrictions, established following the declaration of the state of alarm in application of phase 1 of the Plan for the transition to a new normality

Overnight stays in non-hotel accommodation monthly. Comparative 2019-2020 Thousands



Accumulated overnight stays in non-hotel accommodation. Comparative 2019-2020 Thousands



Open establishments

In May, a total of 19,647 non-hotel accommodations² were open in Spain, 88.1% less than in the same month of 2019. This represents 11.0% of the total directory of establishments in that month.

Type of accommodation	Number of open establishments according to the survey	Percentage of total establishments in the directory	Number of estimated places according to the survey	Percentage of total places in the directory
TOTAL	19,647	11.0%	150,698	9.8%
Holiday dwellings (*)	17,439	11.2%	70,806	12.0%
Campsites	87	6.8%	58,552	8.2%
Rural T.	2,103	9.5%	18,644	8.8%
Hostels	18	6.0%	2,696	8.6%
Annual rate	-88.1		-89.2	

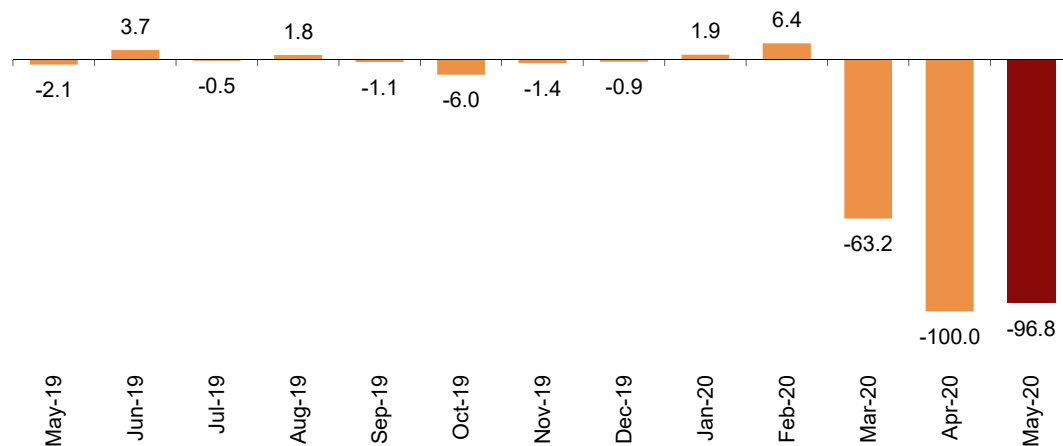
(*) Estimated number of apartments

Overnight stays

Overnight stays in non-hotel accommodation exceeded 295,000 in May, representing a decrease of 96.9% compared to the 9.1 million registered for the same month of 2019.

Annual variation rate of overnight stays

Percentage



During the first five months of 2020, overnight stays decreased by 60.0% as compared to the same period of the previous year.

² The number of tourist apartments is taken into account.

By country of residence, overnight stays by travellers who reside in Spain decreased by 94.5% in the annual rate, exceeding 176,000. In turn, overnight stays by non-residents decreased 98.0%, with just over 118,800.

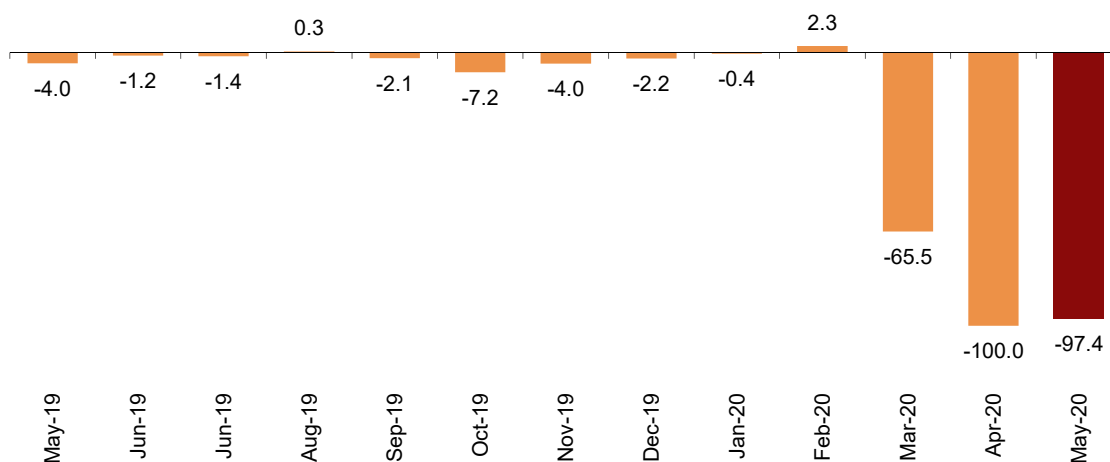
Regarding this final piece of information, it should be noted that Order INT/248/2020, of May 16, which established action criteria for the Security Forces and Bodies related to the temporary reestablishment of border controls and Order INT/270/2020, of May 21, which established criteria for the application of a temporary restriction on non-essential travel from third countries into the European Union and associated Schengen countries for public policy and public health reasons, due to the health crisis occasioned by COVID-19, in and of themselves suppressed the flow of international visitors to Spain for tourism. Therefore, the group of non-resident travellers in Spain who stayed in hotels and tourist accommodations during this month of May consisted either of those who did not leave Spain once these legal acts entered into force, or those who travelled to Spain during this period based on certain exceptional provisions established in the orders.

Holiday Dwellings

Overnight stays at tourist apartments decreased by 97.4% in May as compared with the same month of the previous year.

Annual variation rate for overnight stays

Percentage

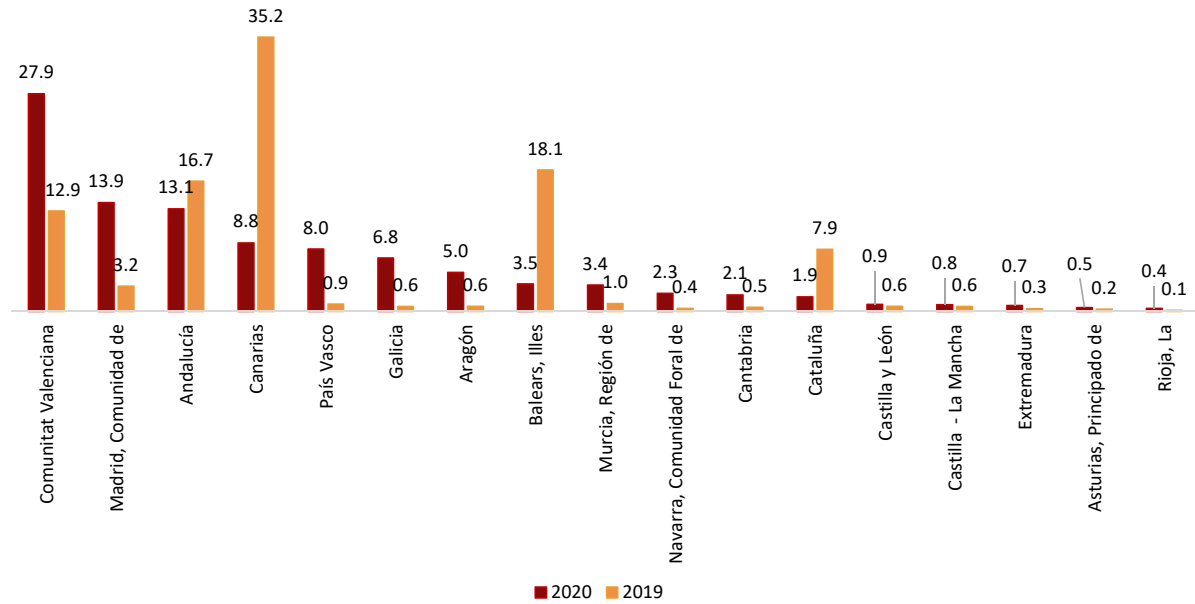


Comunitat Valenciana, Comunidad de Madrid and Andalucía were the main destinations for all travellers in Spain in May, with annual variation rates in the number of overnight stays of -94.4%, -88.9%, and -98.0% respectively.

The distinct percentage distribution of overnight stays in Canarias should be noted as compared to last year. Thus, in May 2020, 8.8% of total overnight stays were in this Autonomous Community (with an annual rate of -99.4%), compared to 35.2% of the total in May 2019.

Distribution of total overnight stays. Compared to May 2019-2020

Percentage

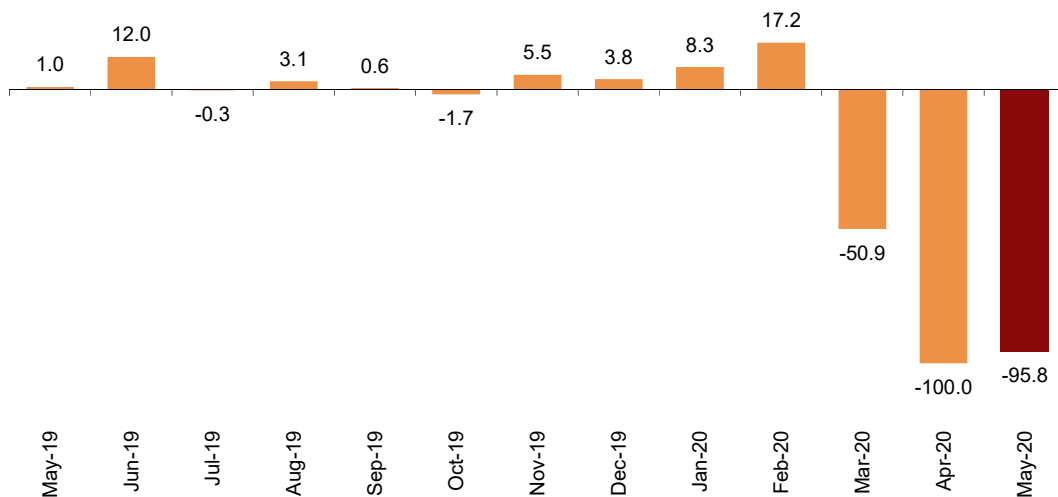


Tourist Campsites

Overnight stays at tourist campsites registered a decrease of 95.8% in May as compared with the same month of the previous year.

Annual variation rate for overnight stays

Percentage



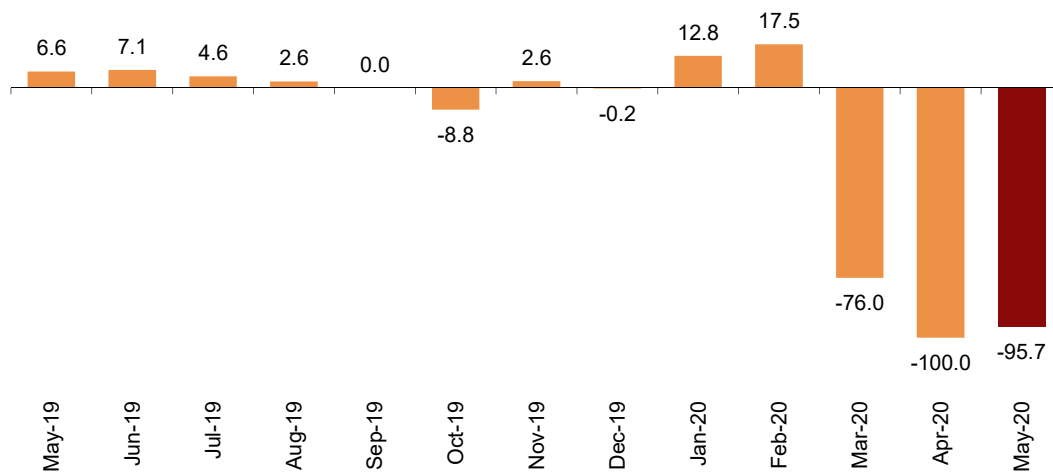
During the month of May, 27.1% of the offered parcels were occupied, 18.5% more than in the same month of 2019. The weekend occupancy rate by pitch reached 30.4%, with an annual decrease of 15.1%.

Rural tourism accommodation

Overnight stays in rural tourism accommodation had an annual decrease of 95.7% in May.

Annual variation rate for overnight stays

Percentage



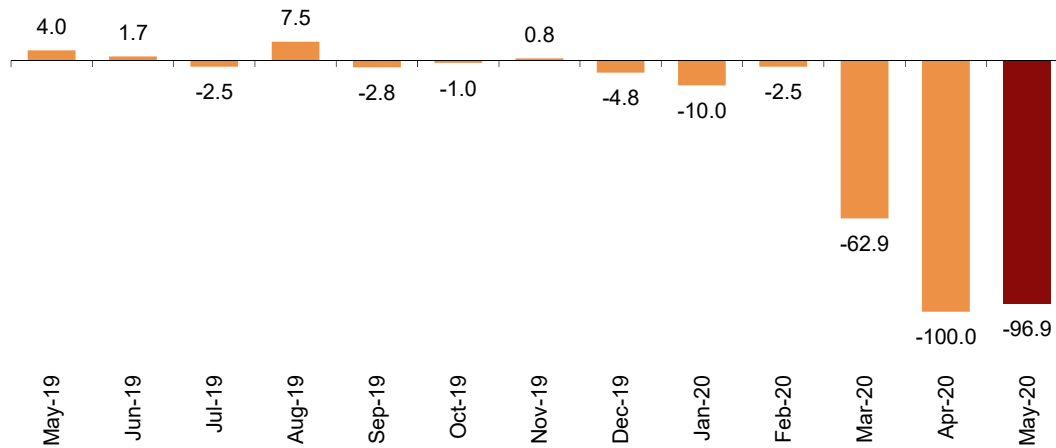
In rural tourism accommodation, 6.3% of the bedplaces were occupied, 59.9% less than in May 2019. The weekend occupancy rate stood at 7.8%, with an annual decrease of 72.6%.

Hostels

Overnight stays in hostels registered an annual decrease of 96.9% May. Resident overnight stays decreased by 99.1% and non-resident overnight stays did so by 92.7%.

9.9% of the available bed-places were occupied, 67.0% less than May 2019. The weekend occupancy rate reached 7.0%, with a 78.2% decrease.

Annual variation rate for overnight stays Percentage



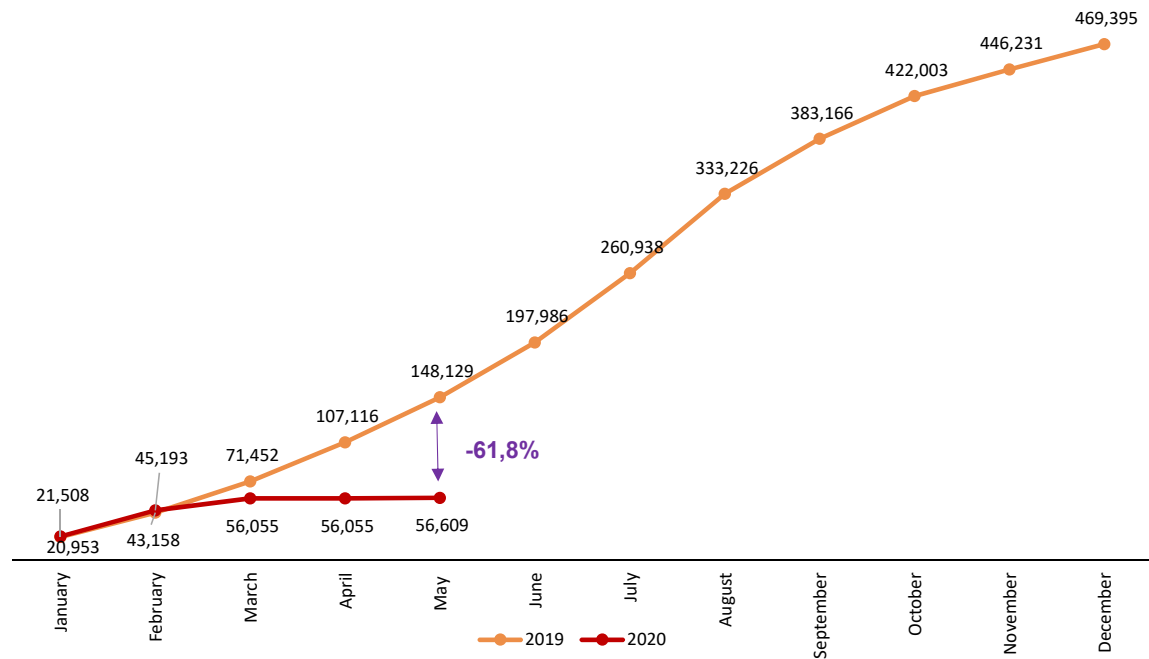
Evolution of travellers and overnight stays in all Spanish collective tourist accommodation

In May, overnight stays in Spanish collective tourist accommodations (hotels³, holiday dwellings, tourist campsites, rural tourism accommodation and youth hostels) decreased by 98.6% in the annual rate.

In the first five months of the year, overnight stays in all tourist accommodations decreased by 61.8%.

³ The press release on Hotel Tourism Short-Term Trends was published on 23 June.

Accumulated overnight stays. Comparative 2019-2020
Thousands



Revision and updating of data

Coinciding with today's publication, the INE has updated the data for May 2019 of the Occupancy Survey in: Holiday Dwellings (HDOS), Campsites (COS), Rural Tourism Accommodation (RTAOS) and Hostels (HOS). As well as the Holiday Dwelling Price Index (HDPI), the Tourist Campsite Price Index (TCPI) and the Rural Tourism Accommodation Price Index (RTAPI).

Methodological note

The main objective of the Holiday Dwelling Occupancy Survey (HDOS) is to ascertain the behaviour of a series of variables that make it possible to describe the segment that occupies this type of accommodation within the tourist sector, both from the point of view of supply and demand.

The Holiday Dwelling Price Index (HDPI) is a statistical measure of the monthly evolution of the prices offered by holiday dwelling establishments to their clients.

Type of operation: on-going monthly survey.

Population scope: holiday apartment establishments and/or companies operating holiday apartments.

Geographical scope: the entire national territory, with the exception of Ceuta and Melilla, where there are no establishments of this type.

Reference period for the results: monthly.

Reference period for the information: The consultation of basic data refers to a fortnight of the month, chosen randomly, in such way that the complete month is covered among all establishments.

Type of sampling: stratified sampling by province and establishment size, and stratified at island-size level for Canarias and Illes Balears.

Collection method: questionnaire filled in directly by the establishment.

For more information on these statistical operations, you can consult the [methodology and the standardised methodological report](#) for each of them in INEbase.

The main objective of the Campsite Occupancy Survey (COS) is to ascertain the behaviour of a series of variables that make it possible to describe the segment that this type of accommodation occupies within the tourist sector, from the viewpoint of both supply and demand.

The Tourist Campsite Price Index (TCPI) is a statistical measure of the monthly evolution of the prices offered by campsites to their clients.

Type of operation: on-going monthly survey.

Population scope: camping establishments.

Geographical scope: the entire national territory, with the exception of Ceuta and Melilla, where there are no establishments of this type.

Reference period for the results: monthly.

Reference period of the information: seven consecutive days of each month, chosen randomly in such way that all the establishments cover the whole month.

Sample size: approximately 1200 establishments.

Type of sampling: comprehensive survey in all provinces.

Collection method: questionnaire filled in directly by the establishment.

For more information on these statistical operations, you can consult the [methodology and the standardised methodological report](#) for each of them in INEbase.

The main objective of the Rural Tourism Accommodation Occupancy Survey (RTAOS) is to ascertain the behaviour of a series of variables that make it possible to describe the fundamental characteristics of this type of accommodation within the tourist sector, both from the point of view of supply and demand.

The Rural Tourism Accommodation Price Index (RTAPI) is a statistical measure of the monthly evolution of the prices that entrepreneurs of this type of accommodation apply to their clients.

Type of operation: on-going monthly survey.

Population scope: rural tourism establishments registered as such in the corresponding register of each Autonomous Community.

Geographical scope: the entire national territory, with the exception of Ceuta and Melilla where there are no establishments of this type.

Reference period for the results: monthly.

Reference period for the information: The consultation of basic data refers to all the days of the month.

Type of sampling: comprehensive survey in all provinces except those where the population size is large enough to take a sample.

Collection method: questionnaire filled in directly by the establishment.

For more information on these statistical operations, you can consult the [methodology and the standardised methodological report](#) for each of them in INEbase.

The main objective of the Hostels Occupancy Survey (HOS) is to ascertain the behaviour of a series of variables that make it possible to describe the fundamental characteristics of this type of accommodation within the tourist sector, both from the point of view of supply and demand.

For more information on this statistical operation, you can consult the [methodology and the standardised methodological report](#) in INEbase.

For further information see **INEbase:** www.ine.es/en/ Twitter: [@es_ine](https://twitter.com/es_ine)

All press releases at: www.ine.es/en/prensa/prensa_en.htm

Press office: Telephone numbers: (+34) 91 583 93 63 /94 08 – gprensa@ine.es

Information Area: Telephone number: (+34) 91 583 91 00 – www.ine.es/infoine/?L=1

Tourist Accommodation Occupancy Survey (Holiday Dwellings)

May 2020

Provisional data

1st July 2020

1. Travellers, overnight stays and average stay by Autonomous Cities and Communities

Autonomous Cities and Communities	Travellers			Overnight stays			Average stay
	Total	Residents in Spain (*)	Residents abroad (*)	Total	Residents in Spain (*)	Residents abroad (*)	
TOTAL	14,744	-	-	137,061	-	-	9.30
Andalucía	2,932	-	-	18,013	-	-	6.14
Aragón	560	-	-	6,817	-	-	12.17
Asturias, Principado de	255	-	-	651	-	-	2.55
Balears, Illes	104	-	-	4,793	-	-	31.00
Canarias	1,071	-	-	12,039	-	-	11.24
Cantabria	327	-	-	2,875	-	-	8.80
Castilla y León	211	-	-	1,206	-	-	5.71
Castilla - La Mancha	90	-	-	1,165	-	-	12.92
Cataluña	318	-	-	2,539	-	-	7.99
Comunitat Valenciana	1,716	-	-	38,290	-	-	22.32
Extremadura	297	-	-	1,017	-	-	3.43
Galicia	1,578	-	-	9,354	-	-	5.93
Madrid, Comunidad de	2,659	-	-	19,087	-	-	7.18
Murcia, Región de	869	-	-	4,614	-	-	5.31
Navarra, Comunidad Foral de	610	-	-	3,160	-	-	5.18
País Vasco	1,046	-	-	10,933	-	-	10.45
Rioja, La	101	-	-	507	-	-	5.02
Ceuta	-	-	-	-	-	-	-
Melilla	-	-	-	-	-	-	-
Annual rate	-98.62	-	-	-97.43	-	-	87.05
Cumulative annual rate	-63.48	-	-	-57.62	-	-	16.07

2. Capacity, occupancy and number of staff by Autonomous Cities and Communities

Autonomous Cities and Communities	Capacity		Level of occupancy				Employed personnel
	Estimated bedplaces	Estimated Holiday dwelling	Per bedplaces	Per bedplaces at weekend	Per Holiday dwelling	Per Holiday dwelling at weekend	
TOTAL	70,806	17,439	6.24	6.14	13.25	12.57	2,286
Andalucía	8,437	2,307	6.89	7.09	13.32	12.49	435
Aragón	1,145	303	19.20	17.58	44.83	41.14	76
Asturias, Principado de	705	160	2.98	7.06	5.80	9.31	43
Balears, Illes	1,315	317	11.76	11.91	32.02	32.43	27
Canarias	8,986	2,963	4.30	4.74	6.28	6.92	411
Cantabria	520	110	17.85	16.50	33.77	30.82	29
Castilla y León	509	113	7.65	6.22	12.71	11.23	47
Castilla - La Mancha	651	170	5.78	5.57	13.37	12.57	67
Cataluña	11,922	2,466	0.69	0.78	1.79	1.94	115
Comunitat Valenciana	25,069	5,006	4.93	4.93	9.14	8.89	325
Extremadura	617	157	5.32	1.12	11.90	2.63	103
Galicia	1,965	562	15.35	14.08	24.46	24.46	90
Madrid, Comunidad de	2,837	1,130	21.71	20.62	38.36	35.06	95
Murcia, Región de	1,776	501	8.38	9.09	19.84	20.56	67
Navarra, Comunidad Foral de	837	277	12.18	8.40	29.70	21.25	151
País Vasco	2,761	729	12.77	11.89	28.44	25.91	169
Rioja, La	755	170	2.17	1.16	9.70	4.51	36
Ceuta	-	-	-	-	-	-	-
Melilla	-	-	-	-	-	-	-
Annual rate	-87.27	-88.03	-79.72	-82.29	-73.05	-76.56	-92.57
Cumulative annual rate	-50.92	-51.01	-13.33	-16.52	-9.07	-11.95	-50.80

(*) Data not available by closure due to COVID19 crisis

Tourist Accommodation Occupancy Survey Campsite Occupancy Survey (COS)

May 2020

Provisional data

1st July 2020

1. Travellers, overnight stays and average stay by category of establishment

Category	Travellers			Overnight stays			Average stay
	Total	Residents in Spain (*)	Residents abroad (*)	Total	Residents in Spain (*)	Residents abroad (*)	
TOTAL	18,928	-	-	113,305	-	-	5.99
Luxury and first-class	6,022	-	-	33,268	-	-	5.52
Second-class	10,547	-	-	69,159	-	-	6.56
Third-class	2,359	-	-	10,878	-	-	4.61
Annual rate	-97.18	-	-	-95.75	-	-	50.71
Cumulative annual rate	-75.75	-	-	-62.63	-	-	54.07

2. Open establishments, capacity, occupancy and number of staff by category of establishments

Category	Estimated open establishments	Capacity		Occupied pitches	Occupancy rate per pitch	Weekend occupancy rate	Employed personnel
		Estimated bedplaces	Estimated pitches				
TOTAL	87	58,552	19,082	160,282	27.10	30.42	433
Luxury and first-class	24	24,271	7,917	46,790	19.06	19.47	188
Second-class	51	30,290	9,873	101,551	33.18	36.84	221
Third-class	13	3,990	1,293	11,941	29.80	45.13	24
Annual rate	-90.34	-90.72	-90.05	-91.89	-18.51	-15.07	-94.73
Cumulative annual rate	-60.67	-63.72	-62.91	-58.09	13.22	2.06	-65.25

3. Travellers, overnight stays and average stay by Autonomous Cities and Communities

Autonomous cities and communities	Travellers			Overnight stays			Average stay
	Total	Residents in Spain (*)	Residents abroad (*)	Total	Residents in Spain (*)	Residents abroad (*)	
TOTAL	18,928	-	-	113,305	-	-	5.99
Andalucía	1,789	-	-	23,108	-	-	12.92
Aragón	891	-	-	3,505	-	-	3.93
Asturias, Principado de	-	-	-	-	-	-	-
Balears, Illes ¹	-	-	-	-	-	-	-
Canarias ¹	-	-	-	-	-	-	-
Cantabria	-	-	-	-	-	-	-
Castilla y León	-	-	-	-	-	-	-
Castilla - La Mancha	373	-	-	677	-	-	1.82
Cataluña	3,112	-	-	6,927	-	-	2.23
Comunitat Valenciana	3,392	-	-	31,720	-	-	9.35
Extremadura	126	-	-	318	-	-	2.52
Galicia	-	-	-	-	-	-	-
Madrid, Comunidad de	2,784	-	-	13,673	-	-	4.91
Murcia, Región de	1,391	-	-	11,558	-	-	8.31
Navarra, Comunidad Foral de	2,088	-	-	6,151	-	-	2.95
País Vasco	1,211	-	-	4,623	-	-	3.82
Rioja, La	-	-	-	-	-	-	-
Ceuta	-	-	-	-	-	-	-
Melilla	-	-	-	-	-	-	-

¹ The size of the sample in these communities does not facilitate the INE the broken down results, with the objective of maintaining statistical secrecy. Nevertheless, the data corresponding to these communities are included in the national total.

(*) Data not available by closure due to COVID19 crisis

4. Open establishments, capacity, occupancy and number of staff by autonomous cities and communities

Autonomous cities and communities	Estimated open establishments	Capacity		Occupied pitches	Occupancy rate per pitch	Weekend occupancy rate	Employed personnel
		Estimated bedplaces	Estimated pitches				
TOTAL	87	58,552	19,082	160,282	27.10	30.42	433
Andalucía	22	11,715	3,658	22,603	19.93	22.28	89
Aragón	6	2,557	807	2,617	10.46	14.14	18
Asturias, Principado de	-	-	-	-	-	-	-
Balears, Illes ¹	-	-	-	-	-	-	-
Canarias ¹	-	-	-	-	-	-	-
Cantabria	-	-	-	-	-	-	-
Castilla y León	-	-	-	-	-	-	-
Castilla - La Mancha	4	1,005	322	2,172	21.76	41.92	9
Cataluña	11	8,211	3,074	12,650	13.27	24.88	62
Comunitat Valenciana	16	11,798	3,611	54,681	48.85	48.99	82
Extremadura	3	1,011	303	404	4.30	16.26	7
Galicia	-	-	-	-	-	-	-
Madrid, Comunidad de	5	3,265	1,102	16,520	48.35	38.17	24
Murcia, Región de	4	4,792	1,579	10,381	21.21	14.33	65
Navarra, Comunidad Foral de	7	4,285	1,082	9,835	29.33	35.49	33
País Vasco	3	1,465	476	4,561	30.92	18.63	4
Rioja, La	-	-	-	-	-	-	-
Ceuta	-	-	-	-	-	-	-
Melilla	-	-	-	-	-	-	-

¹ The size of the sample in these communities does not facilitate the INE the broken down results, with the objective of maintaining statistical secrecy. Nevertheless, the data corresponding to these communities are included in the national total.

**Tourist accommodation occupancy survey
(Rural tourist accommodation)**

May 2020

Provisional data

1st July 2020

1. Number of travellers, overnight stays and average stay by Autonomous City and Community

Autonomous Communities	Number of travellers			Number of overnight stays			Average stay
	Total	Residents In Spain	Residents abroad	Total	Residents In Spain	Residents abroad	
TOTAL	8,088	-	-	36,494	-	-	4.51
Andalucía	1,379	-	-	3,717	-	-	2.70
Aragón	799	-	-	5,151	-	-	6.45
Asturias, Principado de	468	-	-	769	-	-	1.64
Balears, Illes	140	-	-	827	-	-	5.91
Canarias	152	-	-	2,477	-	-	16.26
Cantabria	243	-	-	341	-	-	1.40
Castilla y León	450	-	-	3,887	-	-	8.64
Castilla-La Mancha	581	-	-	4,073	-	-	7.01
Cataluña	527	-	-	2,698	-	-	5.12
Comunitat Valenciana	418	-	-	1,751	-	-	4.19
Extremadura	369	-	-	2,180	-	-	5.92
Galicia	162	-	-	220	-	-	1.35
Madrid, Comunidad de	858	-	-	2,192	-	-	2.56
Murcia, Región de	244	-	-	1,068	-	-	4.37
Navarra, Comunidad Foral de	451	-	-	1,279	-	-	2.84
País Vasco	706	-	-	3,343	-	-	4.73
Rioja, La	141	-	-	519	-	-	3.67
Ceuta	-	-	-	-	-	-	-
Melilla	-	-	-	-	-	-	-
Annual rate	-97.80	-	-	-95.71	-	-	95.17
Cumulative annual rate	-67.43	-	-	-67.87	-	-	-1.35

2. Open rural establishments, bed-places, occupancy rates and employed personnel by Autonomous City and Community

Autonomous Communities	Estimated open rural establishments	Estimated bed-places	Occupancy rate			Employed personnel
			Of bed-places	Of bed-places at weekend	Of bedrooms	
TOTAL	2,103	18,644	6.31	7.78	12.19	4,496
Andalucía	456	3,365	3.56	6.22	6.83	925
Aragón	136	1,042	15.94	15.61	24.76	267
Asturias, Principado de	231	2,253	1.10	2.37	1.88	437
Balears, Illes	30	537	4.97	6.33	15.22	155
Canarias	107	533	15.00	15.64	28.91	148
Cantabria	31	436	2.52	3.05	3.92	75
Castilla y León	163	1,291	9.71	8.49	22.69	462
Castilla-La Mancha	191	1,691	7.76	8.37	18.99	382
Cataluña	140	1,229	7.08	6.33	10.99	326
Comunitat Valenciana	72	766	7.37	9.84	16.57	208
Extremadura	97	1,177	5.98	5.54	13.01	214
Galicia	50	573	1.24	2.60	1.58	108
Madrid, Comunidad de	32	338	20.93	41.27	45.13	106
Murcia, Región de	22	324	10.64	19.50	19.21	56
Navarra, Comunidad Foral de	212	1,621	2.55	5.02	3.55	374
País Vasco	104	1,160	9.29	9.90	13.03	205
Rioja, La	28	307	5.45	3.41	10.51	46
Ceuta	-	-	-	-	-	-
Melilla	-	-	-	-	-	-
Annual rate	-88.15	-89.27	-59.87	-72.57	-37.61	-83.07
Cumulative annual rate	-50.22	-51.45	-33.18	-31.59	-26.62	-41.74

**Tourist Accommodation Occupancy Survey
Hostels Occupancy Survey (HOS)**

May 2020

Provisional data

1st July 2020

1. Travellers, overnight stays and average stay by Autonomous Cities and Communities

Autonomous cities and communities	Travellers			Overnight stays			Average stay
	Total	Residents in Spain	Residents abroad	Total	Residents in Spain	Residents abroad	
TOTAL	390	110	280	8,310	1,645	6,666	21.29
Andalucía	-	-	-	-	-	-	-
Aragón	-	-	-	-	-	-	-
Asturias, Principado de	-	-	-	-	-	-	-
Balears, Illes	-	-	-	-	-	-	-
Canarias	-	-	-	-	-	-	-
Cantabria	-	-	-	-	-	-	-
Castilla y León	-	-	-	-	-	-	-
Castilla - La Mancha	-	-	-	-	-	-	-
Cataluña	-	-	-	-	-	-	-
Comunitat Valenciana	-	-	-	-	-	-	-
Extremadura	-	-	-	-	-	-	-
Galicia	-	-	-	-	-	-	-
Madrid, Comunidad de	-	-	-	-	-	-	-
Murcia, Región de	-	-	-	-	-	-	-
Navarra, Comunidad Foral de	-	-	-	-	-	-	-
País Vasco	-	-	-	-	-	-	-
Rioja, La	-	-	-	-	-	-	-
Ceuta	-	-	-	-	-	-	-
Melilla	-	-	-	-	-	-	-
Annual rate	-99.66	-99.86	-99.22	-96.85	-99.05	-92.65	838.79
Cumulative annual rate	-69.27	-69.62	-68.51	-64.58	-65.93	-61.90	15.26

2. Open establishments, capacity, occupancy and number of staff by autonomous cities and communities

Autonomous cities and communities	Capacity		Occupancy rate		Employed personnel
	Estimated open establishments	Estimated bed-places	Of bed-places	Of bed-places at weekend	
TOTAL	18	2,696	9.94	6.95	105
Andalucía	-	-	-	-	-
Aragón	-	-	-	-	-
Asturias, Principado de	-	-	-	-	-
Balears, Illes	-	-	-	-	-
Canarias	-	-	-	-	-
Cantabria	-	-	-	-	-
Castilla y León	-	-	-	-	-
Castilla - La Mancha	-	-	-	-	-
Cataluña	-	-	-	-	-
Comunitat Valenciana	-	-	-	-	-
Extremadura	-	-	-	-	-
Galicia	-	-	-	-	-
Madrid, Comunidad de	-	-	-	-	-
Murcia, Región de	-	-	-	-	-
Navarra, Comunidad Foral de	-	-	-	-	-
País Vasco	-	-	-	-	-
Rioja, La	-	-	-	-	-
Ceuta	-	-	-	-	-
Melilla	-	-	-	-	-
Annual rate	-93.22	-90.47	-66.98	-78.18	-94.62
Cumulative annual rate	-55.46	-54.42	-21.93	-18.89	-47.07

3. Travellers and overnight stays by countries of residence

Countries	Travellers		Overnight stays		Average stay
	Total	%	Total	%	
TOTAL	390	100.00	8,310	100.00	21.29
Residents in Spain	110	28.22	1,645	19.79	14.93
Residents abroad	280	71.78	6,666	80.21	23.79
TOTAL residents abroad	280	100.00	6,666	100.00	23.79
TOTAL Residents in EU-27 ¹ (without Spain)	15	5.44	98	1.48	6.45
- Germany	0	0.00	0	0.00	0.00
- Belgium	0	0.00	0	0.00	0.00
- France	0	0.00	0	0.00	0.00
- Italy	2	0.74	33	0.50	15.93
- Netherlands	2	0.71	2	0.03	1.00
- Portugal	0	0.00	0	0.00	0.00
United Kingdom	1	0.39	5	0.08	5.00
Switzerland	0	0.00	0	0.00	0.00
Other European countries	29	10.35	663	9.94	22.87
United States of America	0	0.00	0	0.00	0.00
Other countries	246	87.81	5,962	89.45	24.23

¹ Since 31 January 2020, The United Kingdom is no longer part of the E.U., hence the aggregate UE-27 is published.