

30 July 2020

Non-hotel Tourist Accommodation Occupancy Survey
June 2020. Provisional data

**Overnight stays in non-hotel tourist accommodation decrease by
84.6% in June, as compared with the same month of 2019**

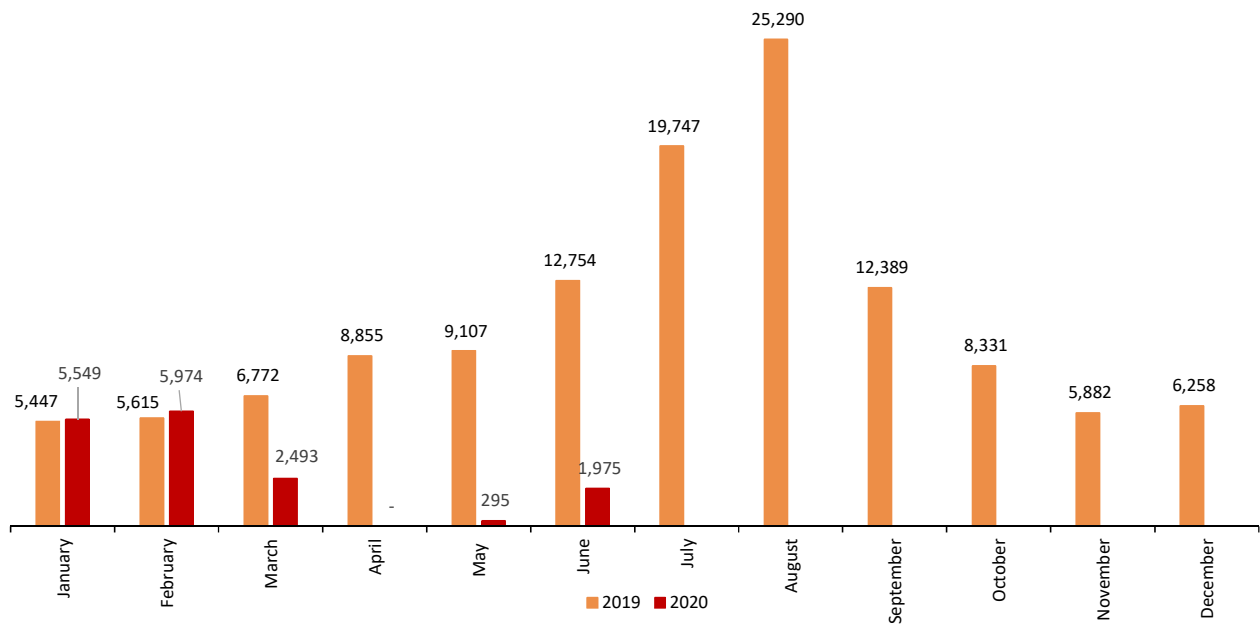
**COVID-19's effects on the Non-Hotel Tourist Accommodation Occupancy Survey in
June**

- In accordance with Royal Decree 555/2020¹, the state of alarm came to an end on June 21st, allowing population mobility throughout the national territory. However, given the restrictions during the first three weeks of June, only 56,845 of the 187,526 non-hotel accommodation establishments in Spain (tourist apartments, camping sites, rural tourism accommodations and tourist hostels) have opened. This represents 67.6% less than in the same month of 2019. The total number of bed-places offered was 646,790, or 39.2% of the total.
- In this month, 583,625 travellers used in a non-hotel tourist accommodation, with a total of 1,975,144 overnight stays. This represents 19.2% of the total travellers and 15.4% of the total overnight stays estimated a year ago.
- Cataluña is the autonomous community with the most bed-places available in non-hotel establishments, with 175,001, or 57.7% less than in June 2019. It also served the most travellers, with 199,587 travellers making 546,219 overnight stays.
- With the start of the “new normality,” travellers have shown a preference for camping and rural accommodations. The decrease in the number of overnight stays in these establishments is 20 points less than in apartments and hostels.
- In the first half of the year, there were 16.2 million overnight stays in these types of tourist accommodations, 66.5% less than the same period for 2019.
- Due to the low number of open accommodations, less information than usual is being released today. In the various employment surveys, only the data at the national level, by autonomous communities, and by provinces is of sufficient quality to be disseminated. Information by area and tourist point is not given in this press release. The Rural Tourism Accommodation Price Index (RTAPI) is published nationally, broken down by rates and rental type.

¹Royal Decree 555/2020, of June 5th, extends the high alert period declared by Royal Decree 463/2020, of March 14, which declared the high alert period in order to manage the health crisis situation caused by COVID-19.

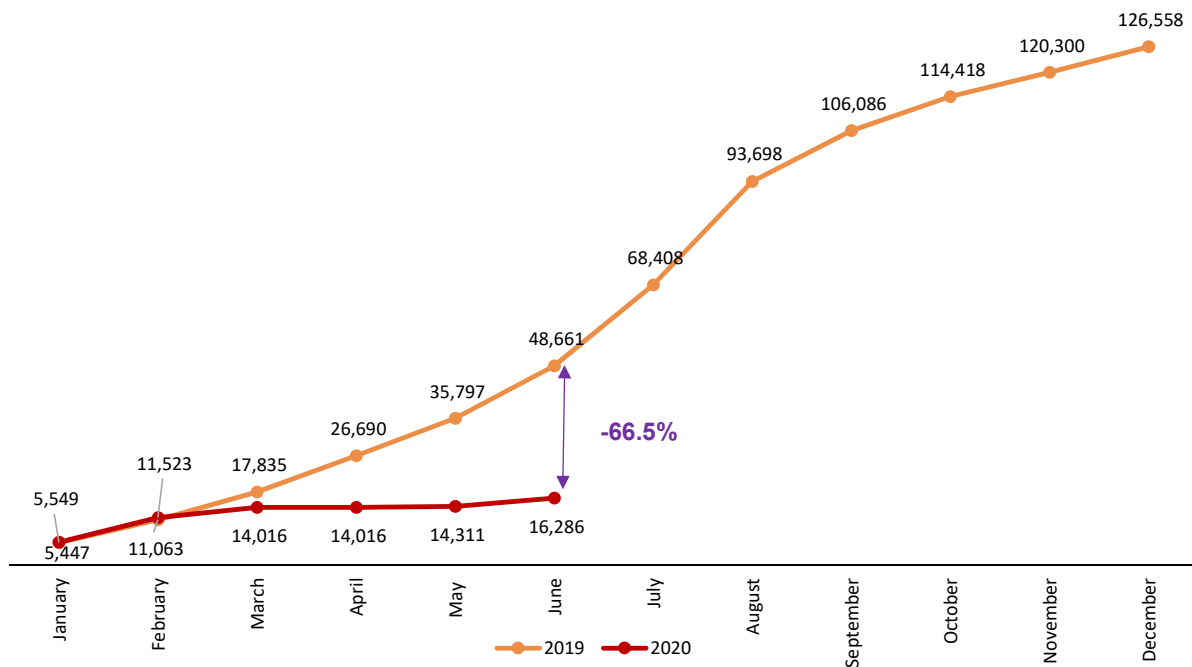
Overnight stays in non-hotel accommodation monthly. Comparative 2019-2020

Thousands



Accumulated overnight stays in non-hotel accommodation. Comparative 2019-2020

Thousands



Open establishments

In June, a total of 56,845 hotels were open in Spain², 67.6% less than in the same month of 2019. This represents 30.3% of the total directory of establishments in that month.

Type of accommodation	Number of open establishments according to the survey	Percentage of total establishments in the directory	Number of estimated places according to the survey	Percentage of total places in the directory
TOTAL	56,845	30.3%	646,790	39.2%
Holiday dwellings (*)	46,836	28.6%	201,430	31.8%
Campsites	522	40.6%	353,846	45.7%
Rural T.	9,433	42.7%	85,722	40.5%
Hostels	54	17.9%	5,792	18.3%
Annual rate	-67.6		-57.8	

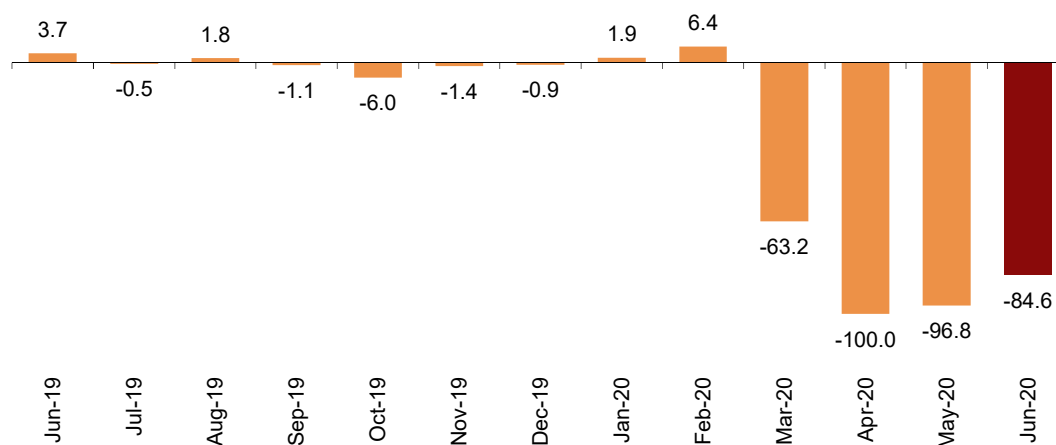
(*) Estimated number of apartments

Overnight stays

Overnight stays in hotel establishments exceeded 1,975,000 million in June, representing a decrease of 84.6% compared to the 12.8 million for the same month of 2019.

Annual variation rate for overnight stays

Percentage



During the first six months of 2020, overnight stays decreased by 66.5% as compared with the same period of the previous year.

² The number of tourist apartments was taken into account.

By type of establishment, the results were as follows:

Annual variation rate of overnight stays by accommodation type

Type of accommodation	Annual variation rate for overnight stays	Cumulative annual rate for overnight stays
TOTAL	-84.65	-66.53
Holiday dwellings	-93.73	-66.24
Campsites	-72.24	-65.79
Rural T.	-73.52	-69.26
Hostels	-94.39	-71.50

By country of residence, overnight stays by residents of Spain decreased by 69.1% in the annual rate, exceeding 1.6 million. In turn, overnight stays by non-residents decreased 96.1%, with just over 285,000.

Regarding this final point, it should be noted that according to ministerial order INT/551/2020 of June 21, *which extends the criteria for the application of a temporary restriction on non-essential travel from third countries into the European Union and Schengen associated member countries for reasons of public order and public health, due to the health crisis caused by COVID-19*, habitual residents of the European Union, the Schengen associated member states and Andorra may enter Spain starting on June 21, except for the internal land borders with Portugal, which remain closed until July 1³. On the other hand, starting on June 15, a pilot program will be launched to open tourist health corridors to the Illes Balears, for travellers from Germany⁴.

Holiday Dwellings

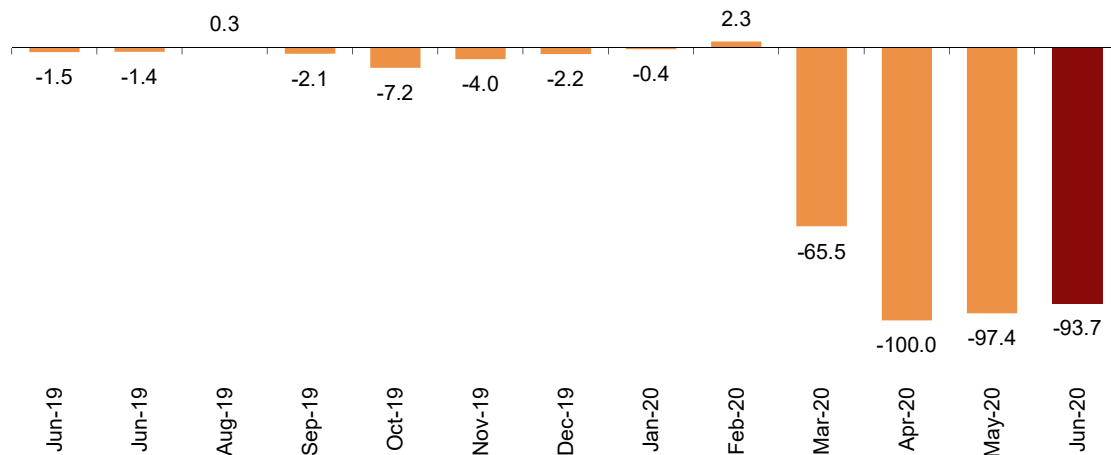
Overnight stays at tourist apartments decreased by 93.7% in June as compared with the same month of the previous year.

³ Order INT/550/2020, of June 21, which extends controls at the internal borders with Portugal; these controls are temporarily put back in place due to the health crisis caused by COVID-19.

⁴ Order SND/518/2020, of June 11, regulating the authorization of a pilot program to open safe tourist corridors in the Autonomous Community of Illes Balears through the partial lifting of the temporary controls at the internal borders established due to the health crisis caused by COVID-19.

Annual variation rate for overnight stays

Percentage

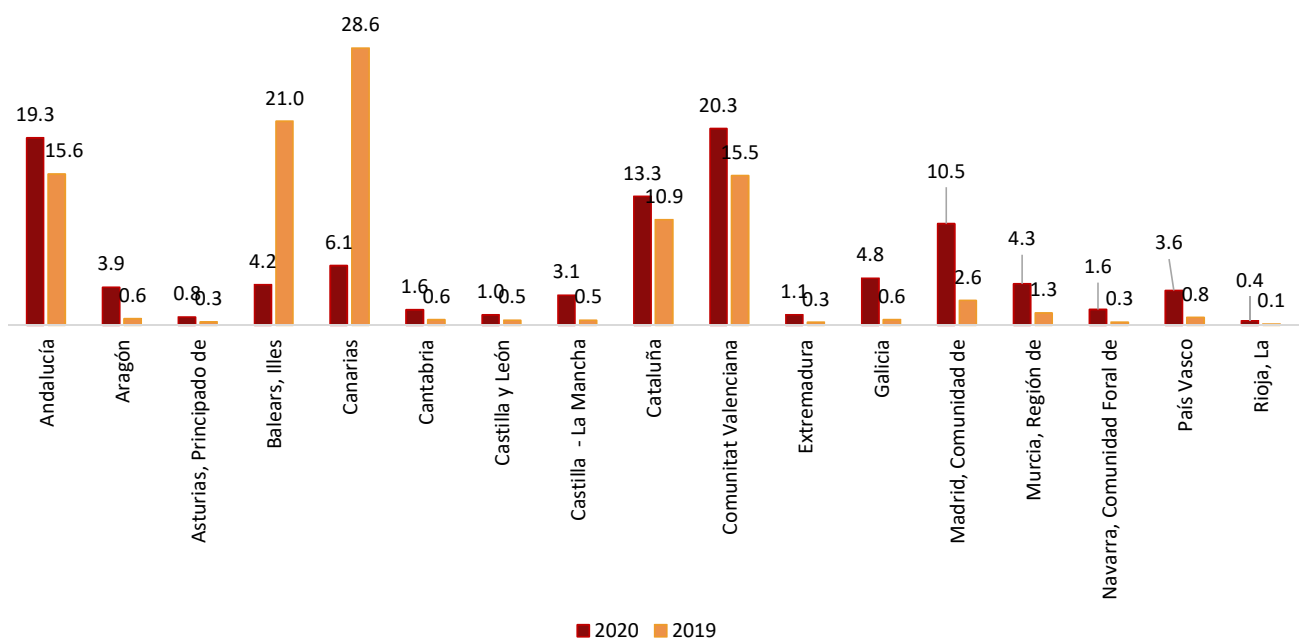


Comunitat Valenciana, Andalucía, and Cataluña were the main destinations for all travellers in Spain in June, with annual variation rates in the number of overnight stays of -91.8%, -92.2%, and -92.3% respectively.

The distinct percentage distribution of overnight stays in Canarias should be noted as compared to last year. Thus, in June 2020, 6.1% of total overnight stays were in this Autonomous Community (with an annual rate of -98.7%), compared to 28.6% of the total in May 2019.

Distribution of total overnight stays. Compared to June 2019-2020

Percentage

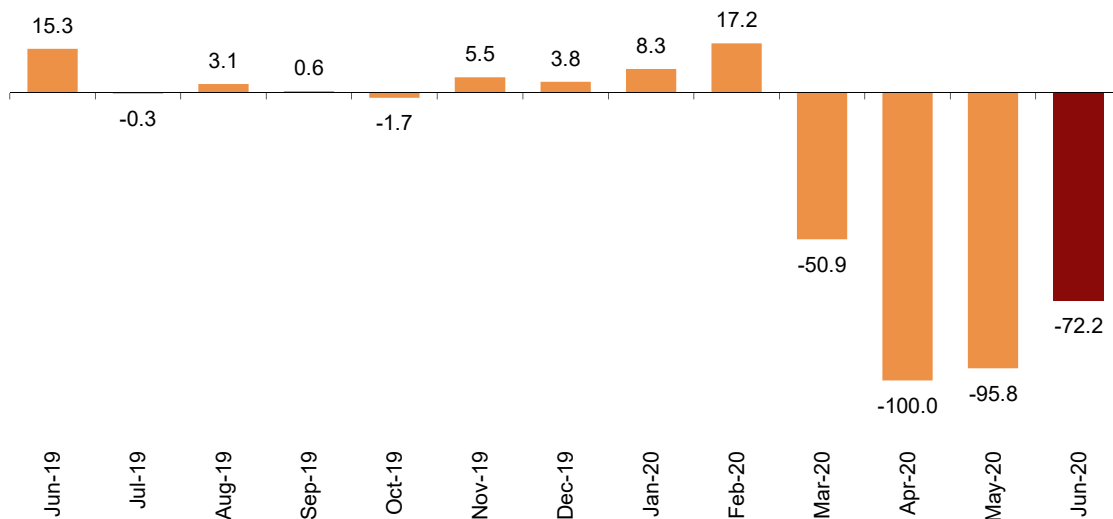


Tourist Campsites

Overnight stays at tourist campsites registered a decrease of 72.2% in June as compared with the same month of the previous year.

Annual variation rate for overnight stays

Percentage



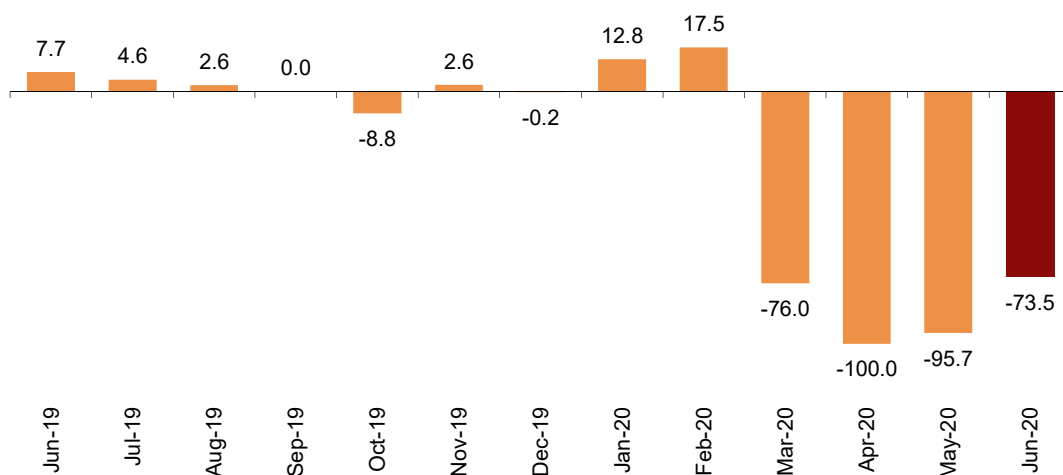
During the month of June, 29.8% of the offered pitches were occupied, 23.0% less than in the same month of 2019. The weekend occupancy rate by pitch reached 32.1%, with an annual decrease of 26.1%.

Rural tourism accommodation

Overnight stays in rural tourism accommodation had an annual decrease of 73.5% in June.

Annual variation rate for overnight stays

Percentage



In rural tourism accommodation, 10.8% of the bed-places were occupied, 45.8% less than in June 2019. The weekend occupancy rate stood at 23.4%, with an annual decrease of 34.6%.

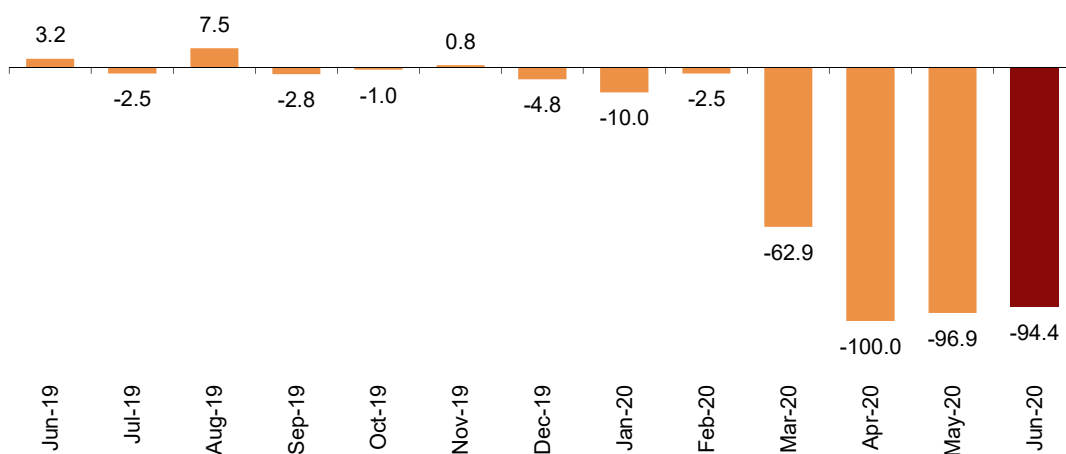
Hostels

Overnight stays in hostels registered an annual decrease of 94.4% June. Resident overnight stays decreased by 94.9% and non-resident overnight stays did so by 93.0%.

In June, 10.4% of the available bedplaces were occupied, 72.1% less than in June 2019. The weekend occupancy rate reached 12.8%, with a 66.5% decrease.

Annual variation rate for overnight stays

Percentage



Price indices

The Tourist Apartment Price Index (TAPI) decreased by 7.0% in June compared to the same month of 2019 and the Rural Tourism Accommodation Price Index (RTAPI) decreased by 2.7%.

On the other hand, the Tourist Campsite Price Index (TCPI) increased by 3.2%.

Evolution of travellers and overnight stays in all Spanish collective tourist accommodation

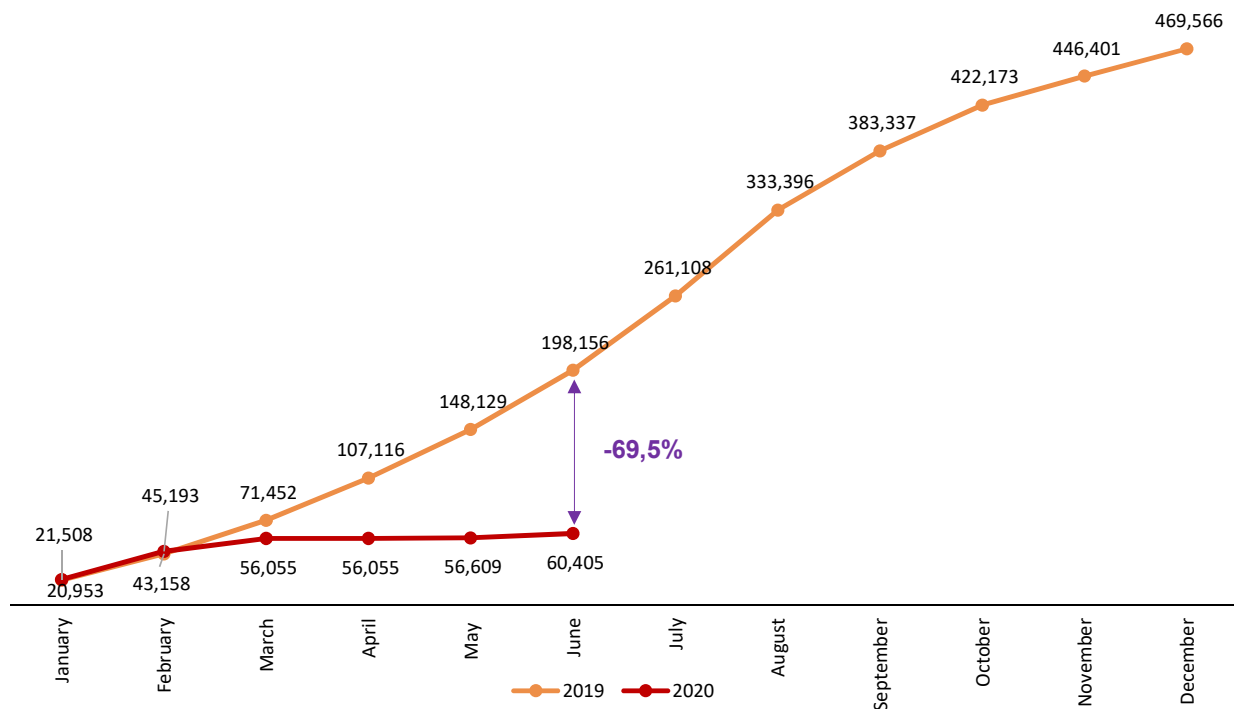
In June, overnight stays in Spanish collective tourist accommodations (hotels⁵, holiday dwellings, tourist campsites, rural tourism accommodation and youth hostels) decreased by 92.4% in the annual rate.

In the first six months of the year, overnight stays in all tourist accommodations decreased by 69.5%.

Accumulated overnight stays. Comparative 2019-2020

Thousands

⁵ The press release on Hotel Tourism Short-Term Trends was published on 23 June.



Revision and updating of data

Coinciding with today's publication, the INE has updated the data for June 2019 of the Occupancy Surveys in: Holiday Dwellings (HDOS), Campsites (COS), Rural Tourism Accommodation (RTAOS) and Hostels (HOS). As well as the Holiday Dwelling Price Index (HDPI), the Tourist Campsite Price Index (TCPI) and the Rural Tourism Accommodation Price Index (RTAPI).

Methodological note

The main objective of the Holiday Dwelling Occupancy Survey (HDOS) is to ascertain the behaviour of a series of variables that make it possible to describe the segment that occupies this type of accommodation within the tourist sector, both from the point of view of supply and demand.

The Holiday Dwelling Price Index (HDPI) is a statistical measure of the monthly evolution of the prices offered by holiday dwelling establishments to their clients.

Type of operation: monthly continuous survey.

Population scope: holiday apartment establishments and/or companies operating holiday apartments.

Geographical scope: the entire national territory, with the exception of Ceuta and Melilla, where there are no establishments of this type.

Reference period of the results: the month.

Reference period for the information: The consultation of basic data refers to a fortnight of the month, chosen randomly, in such way that the complete month is covered among all establishments.

Type of sampling: stratified sampling by province and establishment size, and stratified at island-size level for Canarias and Illes Balears.

Collection method: questionnaire filled in directly by the establishment.

For more information on these statistical operations, you can consult the [methodology and the standardised methodological report](#) for each operation in INEbase.

The main objective of the Campsite Occupancy Survey (COS) is to ascertain the behaviour of a series of variables that make it possible to describe the segment that this type of accommodation occupies within the tourist sector, from the viewpoint of both supply and demand.

The Tourist Campsite Price Index (TCPI) is a statistical measure of the monthly evolution of the prices offered by campsites to their clients.

Type of operation: monthly continuous survey.

Population scope: camping establishments.

Geographical scope: the entire national territory, with the exception of Ceuta and Melilla, where there are no establishments of this type.

Reference period of the results: the month.

Reference period of the information: seven consecutive days of each month, chosen randomly in such way that, between all the establishments, the entire month is covered.

Sample size: approximately 1200 establishments.

Type of sampling: comprehensive survey in all provinces.

Collection method: questionnaire filled in directly by the establishment.

For more information on these statistical operations, you can consult the [methodology and the standardised methodological report](#) for each operation in INEbase.

The main objective of the Rural Tourism Accommodation Occupancy Survey (RTAOS) is to ascertain the behaviour of a series of variables that make it possible to describe the fundamental characteristics of this type of accommodation within the tourist sector, both from the point of view of supply and demand.

The Rural Tourism Accommodation Price Index (RTAPI) is a statistical measure of the monthly evolution of the prices that entrepreneurs of this type of accommodation apply to their clients.

Type of operation: monthly continuous survey.

Population scope: rural tourism establishments registered as such in the corresponding register of each Autonomous Community.

Geographical scope: the entire national territory, with the exception of Ceuta and Melilla where there are no establishments of this type.

Reference period of the results: the month.

Reference period for the information: The consultation of basic data refers to all the days of the month.

Type of sampling: comprehensive survey in all provinces except those where the population size is large enough to take a sample.

Collection method: questionnaire filled in directly by the establishment.

For more information on these statistical operations, you can consult the [methodology and the standardised methodological report](#) for each operation in INEbase.

The main objective of the Hostels Occupancy Survey (HOS) is to ascertain the behaviour of a series of variables that make it possible to describe the fundamental characteristics of this type of accommodation within the tourist sector, both from the point of view of supply and demand.

For more information on this statistical operation, you can consult the [methodology and the standardised methodological report](#) in INEbase.

For further information see **INEbase:** www.ine.es/en/ Twitter: [@es_ine](#)

All press releases at: www.ine.es/en/prensa/prensa_en.htm

Press Office: Telephone numbers: (+34) 91 583 93 63 /94 08 – gprensa@ine.es

Information Area: Telephone number: (+34) 91 583 91 00 – www.ine.es/infoine/?L=1

Tourist Accommodation Occupancy Survey (Holiday Dwellings)

June 2020

Provisional data

30th July 2020

1. Travellers, overnight stays and average stay by Autonomous Cities and Communities

Autonomous Cities and Communities	Travellers			Overnight stays			Average stay
	Total	Residents in Spain	Residents abroad	Total	Residents in Spain	Residents abroad	
TOTAL	109,925	99,117	10,808	440,693	351,483	89,210	4.01
Andalucía	27,633	26,163	1,469	85,257	77,827	7,429	3.09
Aragón	5,257	5,006	251	17,216	14,886	2,330	3.27
Asturias, Principado de	1,251	1,236	14	3,639	3,583	57	2.91
Balears, Illes	3,472	2,546	926	18,456	11,604	6,852	5.32
Canarias	8,209	7,448	761	27,086	20,392	6,694	3.30
Cantabria	1,975	1,938	37	6,991	6,870	121	3.54
Castilla y León	1,652	1,559	93	4,609	4,116	493	2.79
Castilla - La Mancha	2,784	2,647	137	13,601	12,961	640	4.88
Cataluña	17,998	15,430	2,568	58,631	48,155	10,476	3.26
Comunitat Valenciana	14,849	13,284	1,566	89,452	68,015	21,437	6.02
Extremadura	2,043	2,022	21	4,655	4,507	148	2.28
Galicia	5,744	5,000	744	21,291	16,006	5,285	3.71
Madrid, Comunidad de	7,213	5,527	1,685	46,197	27,413	18,784	6.40
Murcia, Región de	3,864	3,754	111	18,852	17,958	894	4.88
Navarra, Comunidad Foral de	2,679	2,473	206	7,093	6,595	498	2.65
País Vasco	2,665	2,448	217	15,726	8,653	7,073	5.90
Rioja, La	636	636	0	1,942	1,942	0	3.05
Ceuta	-	-	-	-	-	-	-
Melilla	-	-	-	-	-	-	-
Annual rate	-91.90	-81.81	-98.67	-93.73	-82.65	-98.22	-22.64
Cumulative annual rate	-70.69	-69.67	-71.28	-66.24	-69.10	-65.41	15.20

2. Capacity, occupancy and number of staff by Autonomous Cities and Communities

Autonomous Cities and Communities	Capacity		Level of occupancy				Employed personnel
	Estimated bedplaces	Estimated Holiday dwelling	Per bedplaces	Per bedplaces at weekend	Per Holiday dwelling	Per Holiday dwelling at weekend	
TOTAL	201,430	46,836	7.28	9.08	14.27	16.47	7,009
Andalucía	28,328	7,243	10.02	14.62	16.90	22.36	1,459
Aragón	4,565	1,092	12.56	17.85	22.32	27.61	305
Asturias, Principado de	2,387	555	5.08	9.59	7.99	12.10	142
Balears, Illes	6,614	1,872	9.30	8.97	17.98	17.75	296
Canarias	11,396	3,803	7.91	11.65	12.52	17.27	794
Cantabria	2,666	637	8.74	10.84	14.89	16.94	202
Castilla y León	2,425	608	6.34	9.41	12.27	15.46	234
Castilla - La Mancha	3,314	830	13.68	18.54	24.65	30.86	232
Cataluña	34,990	7,448	5.55	6.75	11.62	13.23	766
Comunitat Valenciana	77,715	15,067	3.84	4.70	7.53	8.59	1,060
Extremadura	2,295	579	6.76	9.98	10.29	12.76	294
Galicia	3,553	988	19.85	20.07	33.51	34.11	254
Madrid, Comunidad de	6,347	2,414	24.26	23.42	36.69	34.91	254
Murcia, Región de	8,167	1,960	7.69	8.48	16.17	16.78	183
Navarra, Comunidad Foral de	1,228	367	19.16	19.97	32.68	32.32	223
País Vasco	4,061	1,058	13.08	14.22	23.29	24.29	243
Rioja, La	1,379	315	4.69	7.01	8.44	11.96	70
Ceuta	-	-	-	-	-	-	-
Melilla	-	-	-	-	-	-	-
Annual rate	-66.67	-70.01	-81.11	-78.86	-74.94	-73.38	-79.11
Cumulative annual rate	-54.21	-54.93	-26.09	-28.42	-19.09	-21.49	-56.68

3. Travellers, overnight stays, capacity, occupancy, total number of staff with greater number of overnight stays¹

Provinces	Travellers		Overnight stays		Ave- rage stay	Capacity		Level of occupancy			Emple- yed per- sonnel
	Residents in Spain	Residents abroad	Residents in Spain	Residents abroad		Estimated bed- places	Estimated holiday dwelling	Per bed- places	Per Holiday dwelling	Per Holiday dwelling at weekend	
Alicante\Alacant	5,953	947	31,715	15,023	6.77	54,674	10,436	2.85	5.23	5.95	702
Castellón\Castelló	4,158	283	21,289	4,709	5.85	11,651	2,228	7.44	13.32	15.35	150
Barcelona	4,169	773	17,647	4,968	4.58	3,460	1,013	21.75	42.42	45.41	190
Málaga	5,885	688	19,110	3,269	3.40	12,301	2,923	6.06	11.64	13.71	627
Girona	4,565	1,215	15,025	4,050	3.30	17,889	3,690	3.39	6.43	7.41	313
St Cruz de Tenerife	4,313	407	13,084	3,904	3.60	5,536	1,915	10.20	15.59	20.17	451
Valencia\València	3,173	336	15,011	1,705	4.76	11,390	2,403	4.89	12.15	13.79	207
Sevilla	3,346	377	12,412	2,716	4.06	2,874	888	17.52	37.05	41.04	196
Tarragona	6,153	576	13,403	1,387	2.20	12,852	2,562	3.82	6.34	8.40	236
Cádiz	4,543	133	12,362	494	2.75	3,283	879	13.05	17.86	31.42	162
Huelva	4,524	89	11,970	370	2.67	2,800	707	14.69	16.77	27.31	46
Palmas, Las	3,135	354	7,309	2,790	2.89	5,860	1,889	5.74	9.41	14.34	343
Lugo	1,234	624	5,354	4,119	5.10	1,219	321	25.82	38.25	32.45	68
Granada	2,927	21	9,388	45	3.20	2,511	699	12.48	13.06	20.37	227
Almería	3,190	134	8,014	503	2.56	2,731	686	10.40	18.44	22.06	87

¹ Provinces belonging to uniprovincial Autonomous Communities have not been included because they are reflected in previous tables.

4. Travellers, overnight stays, capacity, occupancy, total number of staff from tourist areas with greater number of overnight stays

Tourist Areas	Travellers		Overnight stays		Ave- rage stay	Capacity		Level of occupancy			Emple- yed per- sonnel
	Residents in Spain	Residents abroad	Residents in Spain	Residents abroad		Estimated bed- places	Estimated holiday dwelling	Per bed- places	Per Holiday dwelling	Per Holiday dwelling at weekend	
Costa Blanca	-	-	-	-	-	-	-	-	-	-	-
Costa de Castellón	-	-	-	-	-	-	-	-	-	-	-
Costa del Sol (Málaga)	-	-	-	-	-	-	-	-	-	-	-
Costa Barcelona 2016	-	-	-	-	-	-	-	-	-	-	-
Costa Cálida (Murcia)	-	-	-	-	-	-	-	-	-	-	-
Costa Brava	-	-	-	-	-	-	-	-	-	-	-
Costa Daurada	-	-	-	-	-	-	-	-	-	-	-
Costa de la Luz de Huelva	-	-	-	-	-	-	-	-	-	-	-
Costa de la Luz de Cádiz	-	-	-	-	-	-	-	-	-	-	-
Tenerife	-	-	-	-	-	-	-	-	-	-	-

5. Travellers, overnight stays, capacity, occupancy, total number of staff from tourist sites with greater number at overnights stays

Tourist sites	Travellers		Overnight stays		Ave- rage stay	Capacity		Level of occupancy			Emple- yed per- sonnel
	Residents in Spain	Residents abroad	Residents in Spain	Residents abroad		Estimated bed- places	Estimated holiday dwelling	Per bed- places	Per Holiday dwelling	Per Holiday dwelling at weekend	
MADRID	-	-	-	-	-	-	-	-	-	-	-
ALICANTE	-	-	-	-	-	-	-	-	-	-	-
ORIHUELA	-	-	-	-	-	-	-	-	-	-	-
CARTAGENA	-	-	-	-	-	-	-	-	-	-	-
VIVEIRO	-	-	-	-	-	-	-	-	-	-	-
MÁLAGA	-	-	-	-	-	-	-	-	-	-	-
PUNTA UMBRÍA	-	-	-	-	-	-	-	-	-	-	-
SEVILLA	-	-	-	-	-	-	-	-	-	-	-
VALENCIA	-	-	-	-	-	-	-	-	-	-	-
CASTELLDEFELS	-	-	-	-	-	-	-	-	-	-	-

Tourist Accommodation Occupancy Survey Campsite Occupancy Survey (COS)

June 2020

Provisional data

30th July 2020

1. Travellers, overnight stays and average stay by category of establishment

Category	Travellers			Overnight stays			Average stay
	Total	Residents in Spain	Residents abroad	Total	Residents in Spain	Residents abroad	
TOTAL	352,643	336,184	16,459	1,237,154	1,055,762	181,392	3.51
Luxury and first-class	153,180	145,240	7,940	533,547	465,895	67,652	3.48
Second-class	165,596	158,582	7,013	590,300	484,566	105,734	3.56
Third-class	33,867	32,362	1,506	113,307	105,301	8,006	3.35
Annual rate	-68.41	-57.71	-94.88	-72.24	-57.95	-90.68	-12.11
Cumulative annual rate	-73.05	-69.45	-80.20	-65.79	-71.21	-60.94	26.92

2. Open establishments, capacity, occupancy and number of staff by category of establishments

Category	Estimated open establishments	Capacity		Occupied pitches	Occupancy rate per pitch	Weekend occupancy rate	Employed personnel
		Estimated bedplaces	Estimated pitches				
TOTAL	522	353,846	109,145	974,135	29.75	32.09	4,037
Luxury and first-class	136	148,791	45,194	359,353	26.50	29.21	1,840
Second-class	292	168,713	53,224	496,826	31.12	33.17	1,776
Third-class	93	36,343	10,728	117,956	36.65	37.57	421
Annual rate	-51.20	-51.17	-50.21	-61.67	-23.03	-26.12	-62.00
Cumulative annual rate	-58.29	-60.49	-59.70	-59.04	1.78	-6.02	-64.28

3. Travellers, overnight stays and average stay by Autonomous Cities and Communities

Autonomous cities and communities	Travellers			Overnight stays			Average stay
	Total	Residents in Spain	Residents abroad	Total	Residents in Spain	Residents abroad	
TOTAL	352,643	336,184	16,459	1,237,154	1,055,762	181,392	3.51
Andalucía	45,238	42,686	2,552	154,241	121,713	32,528	3.41
Aragón	12,299	12,013	287	30,113	29,201	911	2.45
Asturias, Principado de	8,877	8,809	68	52,381	51,983	398	5.90
Balears, Illes ¹	-	-	-	-	-	-	-
Canarias ¹	-	-	-	-	-	-	-
Cantabria	10,571	10,007	564	36,347	34,269	2,078	3.44
Castilla y León	3,357	3,185	172	8,985	8,759	226	2.68
Castilla - La Mancha	4,021	3,954	68	8,590	8,503	88	2.14
Cataluña	159,104	150,723	8,380	437,100	408,804	28,295	2.75
Comunitat Valenciana	44,082	41,966	2,117	283,839	192,290	91,549	6.44
Extremadura	2,275	2,219	56	5,408	5,342	66	2.38
Galicia	8,729	8,594	135	30,266	29,302	964	3.47
Madrid, Comunidad de	17,378	17,170	208	64,505	64,145	360	3.71
Murcia, Región de	7,402	7,238	165	33,501	17,319	16,181	4.53
Navarra, Comunidad Foral de	9,935	9,446	489	31,756	31,016	740	3.20
País Vasco	12,484	11,309	1,175	36,857	34,189	2,668	2.95
Rioja, La	3,182	3,164	18	10,020	9,998	22	3.15
Ceuta	-	-	-	-	-	-	-
Melilla	-	-	-	-	-	-	-

¹ The size of the sample in these communities does not facilitate the INE the broken down results, with the objective of maintaining statistical secrecy. Nevertheless, the data corresponding to these communities are included in the national total.

4. Open establishments, capacity, occupancy and number of staff by autonomous cities and communities

Autonomous cities and communities	Estimated open establishments	Capacity Estimated bedplaces	Estimated pitches	Occupied pitches	Occupancy rate per pitch	Weekend occupancy rate	Employed personnel
TOTAL	522	353,846	109,145	974,135	29.75	32.09	4,037
Andalucía	77	42,561	13,456	92,900	23.01	25.12	495
Aragón	39	14,880	4,641	34,277	24.62	28.38	150
Asturias, Principado de	27	15,005	4,681	36,131	25.73	27.60	147
Balears, Illes ¹	-	-	-	-	-	-	-
Canarias ¹	-	-	-	-	-	-	-
Cantabria	17	11,442	3,848	34,245	29.67	35.24	96
Castilla y León	15	6,704	2,042	9,404	15.35	18.79	69
Castilla - La Mancha	12	5,135	1,331	7,487	18.75	27.03	65
Cataluña	134	128,987	38,118	320,515	28.03	31.67	1,567
Comunitat Valenciana	75	51,132	15,888	206,271	43.28	41.46	577
Extremadura	13	5,067	1,789	6,530	12.17	19.46	61
Galicia	40	14,398	4,690	20,440	14.53	18.19	151
Madrid, Comunidad de	19	16,996	5,885	81,851	46.36	47.47	209
Murcia, Región de	12	12,912	4,178	25,131	20.05	22.26	154
Navarra, Comunidad Foral de	17	11,085	2,696	32,905	40.68	50.36	139
País Vasco	16	9,368	2,865	27,783	32.32	36.41	100
Rioja, La	5	4,805	1,473	27,581	62.42	65.05	30
Ceuta	-	-	-	-	-	-	-
Melilla	-	-	-	-	-	-	-

¹ The size of the sample in these communities does not facilitate the INE the broken down results, with the objective of maintaining statistical secrecy. Nevertheless, the data corresponding to these communities are included in the national total.

5. Travellers and overnight stays, average stay, capacity, occupancy and number of staff by provinces with the greatest number of overnight stays¹

Provinces	Travellers		Overnight stays		Average stay	Estimated open establishments	Estimated pitches	Occupancy rate per pitch	Employed personnel
	Residents in Spain	Residents abroad	Residents in Spain	Residents abroad					
Alicante\Alacant	19,892	969	104,403	84,244	9.04	31	8,053	52.14	318
Tarragona	49,666	1,699	148,545	10,038	3.09	29	11,417	24.19	563
Barcelona	50,809	2,057	135,069	5,330	2.66	38	10,106	42.17	348
Girona	44,072	4,366	111,674	12,457	2.56	52	14,245	20.70	607
Valencia\València	16,287	596	65,774	3,568	4.11	29	5,401	36.53	178
Cádiz	17,609	755	49,615	3,607	2.90	13	3,443	24.22	150
Málaga	7,368	749	20,452	19,401	4.91	16	2,985	29.42	109
Castellón\Castelló	5,787	552	22,113	3,736	4.08	15	2,434	28.92	81
Huelva	4,314	554	20,120	5,687	5.30	6	1,666	16.57	17
Huesca	9,152	287	21,699	534	2.36	26	3,380	28.52	117
Gipúzkoa	7,386	821	18,559	1,471	2.44	9	1,815	26.52	70
Pontevedra	6,018	59	18,911	842	3.25	17	2,494	15.62	63
Almería	6,030	268	14,409	2,512	2.69	12	1,781	26.66	88
Lleida	6,176	258	13,516	470	2.17	16	2,350	30.27	50
Coruña, A	2,243	58	9,754	88	4.28	19	1,964	14.33	80

¹ Provinces belonging to uniprovincial Autonomous Communities have not been included because they are reflected in previous tables.

Tourist accommodation occupancy survey (Rural tourist accommodation)

June 2020

Provisional data

30th July 2020

1. Number of travellers, overnight stays and average stay by Autonomous City and Community

Autonomous Communities	Number of travellers			Number of overnight stays			Average stay
	Total	Residents In Spain	Residents abroad	Total	Residents In Spain	Residents abroad	
TOTAL	116,719	113,969	2,750	279,292	270,453	8,838	2.39
Andalucía	17,232	17,036	195	43,657	42,926	731	2.53
Aragón	4,936	4,883	53	14,752	14,285	467	2.99
Asturias, Principado de	11,541	11,391	150	28,070	27,812	258	2.43
Balears, Illes	1,451	1,172	278	3,599	2,865	734	2.48
Canarias	1,275	1,248	27	5,318	3,616	1,703	4.17
Cantabria	5,250	4,935	315	10,792	10,112	680	2.06
Castilla y León	10,046	9,857	189	23,835	23,425	409	2.37
Castilla-La Mancha	7,249	7,150	99	21,128	20,761	368	2.91
Cataluña	21,958	21,449	509	46,718	45,676	1,043	2.13
Comunitat Valenciana	5,941	5,777	164	13,731	12,877	853	2.31
Extremadura	4,287	4,084	203	9,619	9,207	412	2.24
Galicia	3,547	3,499	48	7,619	7,549	70	2.15
Madrid, Comunidad de	8,878	8,644	234	17,121	16,752	369	1.93
Murcia, Región de	2,468	2,430	38	6,349	6,312	38	2.57
Navarra, Comunidad Foral de	4,448	4,439	10	11,869	11,856	13	2.67
País Vasco	5,222	5,009	213	12,882	12,214	668	2.47
Rioja, La	990	966	24	2,233	2,209	24	2.26
Ceuta	-	-	-	-	-	-	-
Melilla	-	-	-	-	-	-	-
Annual rate	-73.42	-65.89	-97.38	-73.52	-61.22	-97.53	-0.39
Cumulative annual rate	-68.88	-65.30	-83.48	-69.26	-65.17	-79.81	-1.23

2. Open rural establishments, bed-places, occupancy rates and employed personnel by Autonomous City and Community

Autonomous Communities	Estimated open rural establishments	Estimated bed-places	Occupancy rate			Employed personnel
			Of bed-places	Of bed-places at weekend	Of bedrooms	
TOTAL	9,433	85,722	10.84	23.42	14.61	14,441
Andalucía	1,676	13,571	10.71	24.28	12.98	2,176
Aragón	626	4,769	10.27	19.91	15.00	829
Asturias, Principado de	762	7,516	12.40	23.62	14.38	1,281
Balears, Illes	65	1,067	11.22	20.04	19.76	279
Canarias	339	1,765	10.04	15.55	16.74	400
Cantabria	246	3,697	9.73	18.97	12.13	512
Castilla y León	1,632	13,268	5.98	13.87	9.54	2,539
Castilla-La Mancha	902	7,891	8.92	19.76	13.43	1,238
Cataluña	1,091	9,801	15.82	33.33	19.85	1,906
Comunitat Valenciana	420	4,493	10.19	22.38	19.68	692
Extremadura	344	3,950	8.11	17.61	12.36	569
Galicia	213	2,522	10.02	20.58	11.87	402
Madrid, Comunidad de	188	2,411	23.63	57.35	33.55	341
Murcia, Región de	100	1,516	13.96	36.23	18.64	170
Navarra, Comunidad Foral de	501	3,853	10.25	25.21	11.82	681
País Vasco	247	2,781	15.39	33.38	19.50	342
Rioja, La	80	851	8.74	17.58	11.76	84
Ceuta	-	-	-	-	-	-
Melilla	-	-	-	-	-	-
Annual rate	-47.21	-51.05	-45.80	-34.64	-40.76	-47.01
Cumulative annual rate	-49.69	-51.38	-36.30	-32.27	-30.08	-42.72

3. Number of travellers, overnight stays and average stay in Provinces with the greatest number of overnight stays¹

Provinces	Number of travellers			Number of overnight stays			Average stay
	Total	Residents In Spain	Residents abroad	Total	Residents In Spain	Residents abroad	
Málaga	7,034	6,953	80	20,583	20,103	480	2.93
Girona	8,597	8,139	457	18,127	17,170	957	2.11
Barcelona	8,236	8,203	34	16,285	16,217	67	1.98
Córdoba	3,290	3,265	24	7,865	7,758	107	2.39
Huesca	2,476	2,439	37	7,338	7,301	37	2.96
Lleida	2,589	2,589	0	7,220	7,220	0	2.79
Gipúzkoa	2,597	2,478	119	6,505	6,291	214	2.50
Albacete	2,264	2,264	0	6,479	6,479	0	2.86
Cáceres	2,716	2,546	170	6,019	5,654	366	2.22
Zaragoza	1,720	1,704	16	5,603	5,174	430	3.26
Castellón\Castelló	1,841	1,820	21	5,317	5,275	42	2.89
Tarragona	2,536	2,518	18	5,086	5,068	18	2.01
Guadalajara	2,061	2,003	57	4,829	4,543	285	2.34
Alicante\Alacant	2,256	2,158	98	4,785	4,660	125	2.12
Cuenca	910	876	34	4,698	4,624	75	5.16

¹ Provinces belonging to uniprovincial Autonomous Communities have not been included because they are reflected in previous tables.

4. Open rural establishments, bed-places, occupancy rates and employed personnel in Provinces with the highest number of overnight stays¹

Provinces	Estimated open rural establishments	Estimated bed-places	Occupancy rate			Employed personnel
			Of bed-places	Of bed-places at weekend	Of bedrooms	
Málaga	998	6,655	10.30	22.01	10.80	1,224
Girona	348	3,511	17.10	29.97	19.92	552
Barcelona	344	2,773	19.49	53.35	24.22	652
Córdoba	190	1,981	13.22	30.60	17.57	270
Huesca	262	1,846	13.19	21.08	16.24	382
Lleida	234	1,841	13.05	20.45	20.04	477
Gipúzkoa	113	1,287	16.80	31.42	21.72	150
Albacete	359	2,350	9.18	23.24	12.75	477
Cáceres	242	2,816	7.12	16.35	10.61	405
Zaragoza	183	1,554	11.98	26.17	18.77	209
Castellón\Castelló	184	1,774	9.99	21.34	16.14	276
Tarragona	165	1,676	10.11	21.37	12.21	225
Guadalajara	141	1,723	9.34	23.91	11.92	225
Alicante\Alacant	116	1,099	14.51	35.13	21.84	207
Cuenca	190	1,917	8.17	11.59	16.22	228

¹ Provinces belonging to uniprovincial Autonomous Communities have not been included because they are reflected in previous tables.

5. Number of travellers, overnight stays, average stay, capacity and occupancy rates in areas with the highest number of overnight stays

Areas	Number of travellers		Number of overnight stays		Average stay	Capacity		Occupancy rate		
	Residents In Spain	Residents abroad	Residents In Spain	Residents abroad		Estimated open rural establish.	Estimated bed-places	Of bed-places	Of bed-places at weekend	Of bedrooms
Costa Verde (Asturias)	-	-	-	-	-	-	-	-	-	-
Pirineus	-	-	-	-	-	-	-	-	-	-
Costa Brava	-	-	-	-	-	-	-	-	-	-
Pirineo Navarro	-	-	-	-	-	-	-	-	-	-
Costa del Sol (M laga)	-	-	-	-	-	-	-	-	-	-
Pirineo Aragónés	-	-	-	-	-	-	-	-	-	-
Costa Barcelona 2016	-	-	-	-	-	-	-	-	-	-
Parque Nacional Sierra de Guadarram	-	-	-	-	-	-	-	-	-	-
P.Nacional Picos de Europa	-	-	-	-	-	-	-	-	-	-
Extremadura Norte	-	-	-	-	-	-	-	-	-	-
Terres de Lleida	-	-	-	-	-	-	-	-	-	-
P.Natural Sierras de Tejeda, Almija	-	-	-	-	-	-	-	-	-	-
Pirineo Vasco	-	-	-	-	-	-	-	-	-	-
P.Natural Calares y Cabeceras de lo	-	-	-	-	-	-	-	-	-	-
P.Natural Sierras Subbéticas	-	-	-	-	-	-	-	-	-	-

6. Number of travellers, overnight stays, average stay, capacity, occupancy rates and employed personnel per rural house by Autonomous City and Community²

Autonomous Communities	Number of travellers		Number of overnight stays		Average stay	Capacity		Occupancy rate		Employed personnel
	Residents In Spain	Residents abroad	Residents In Spain	Residents abroad		Estimated open rural establish.	Estimated bed-places	Of bed-places	Of bed-places at weekend	
TOTAL	83,105	1,564	205,630	6,769	2.51	8,306	68,024	10.39	22.81	11,866
Andalucía	16,948	171	42,755	682	2.54	1,674	13,433	10.77	24.35	2,168
Aragón	4,227	49	12,552	463	3.04	559	4,175	10.35	19.93	736
Asturias, Principado de	2,920	74	7,273	100	2.46	490	3,345	7.33	13.43	636
Balears, Illes	618	94	1,351	304	2.33	34	524	10.49	15.55	72
Canarias	966	23	3,091	1,697	4.84	336	1,679	9.50	14.51	386
Cantabria	1,449	161	4,191	470	2.89	139	1,560	9.96	18.63	270
Castilla y León	6,050	21	16,231	139	2.70	1,499	10,613	5.14	12.90	2,124
Castilla-La Mancha	6,959	93	20,342	350	2.93	886	7,418	9.29	20.57	1,215
Cataluña	21,449	509	45,676	1,043	2.13	1,091	9,801	15.82	33.33	1,906
Comunitat Valenciana	4,949	160	11,353	849	2.39	401	3,562	11.42	24.64	632
Extremadura	2,152	49	5,004	103	2.32	217	2,102	8.09	18.24	310
Galicia	2,401	0	5,731	0	2.39	160	1,753	10.85	22.53	288
Madrid, Comunidad de	2,056	7	5,030	13	2.45	81	887	18.95	49.02	111
Murcia, Región de	2,056	33	5,779	33	2.78	92	1,316	14.72	38.95	145
Navarra, Comunidad Foral de	3,979	0	9,762	0	2.45	417	3,326	9.76	25.95	571
País Vasco	2,962	98	7,301	499	2.55	151	1,678	15.45	33.88	212
Rioja, La	966	24	2,209	24	2.26	80	851	8.74	17.58	84
Ceuta	-	-	-	-	-	-	-	-	-	-
Melilla	-	-	-	-	-	-	-	-	-	-

² To facilitate the comparability between data from different Autonomous Communities (and because of the different regulation and different characteristics), a group called rural house has been created, with those establishments with similar typology (location, capacity, etc...).

The variables included in the previous table have been estimated with that type of establishments.

Tourist Accommodation Occupancy Survey Hostels Occupancy Survey (HOS)

June 2020

Provisional data

30st July 2020

1. Travellers, overnight stays and average stay by Autonomous Cities and Communities

Autonomous cities and communities	Travellers			Overnight stays			Average stay
	Total	Residents in Spain	Residents abroad	Total	Residents in Spain	Residents abroad	
TOTAL	4,338	3,772	567	18,005	12,008	5,997	4.15
Andalucía	2,029	2,029	0	6,069	6,069	0	2.99
Aragón	117	113	4	346	342	4	2.96
Asturias, Principado de	-	-	-	-	-	-	-
Balears, Illes	-	-	-	-	-	-	-
Canarias	154	62	92	2,178	249	1,929	14.16
Cantabria	-	-	-	-	-	-	-
Castilla y León	134	134	0	309	309	0	2.31
Castilla - La Mancha	-	-	-	-	-	-	-
Cataluña	527	363	164	3,770	2,011	1,759	7.16
Comunitat Valenciana	472	212	260	3,006	785	2,221	6.37
Extremadura	75	75	0	101	101	0	1.34
Galicia	-	-	-	-	-	-	-
Madrid, Comunidad de	-	-	-	-	-	-	-
Murcia, Región de	275	243	32	399	337	62	1.45
Navarra, Comunidad Foral de	-	-	-	-	-	-	-
País Vasco	147	132	15	282	261	21	1.91
Rioja, La	-	-	-	-	-	-	-
Ceuta	-	-	-	-	-	-	-
Melilla	-	-	-	-	-	-	-
Tasa anual	-96.72	-96.10	-98.41	-94.39	-94.89	-93.02	71.20
Tasa anual acumulada	-75.91	-76.38	-74.86	-71.50	-73.17	-67.94	18.33

2. Open establishments, capacity, occupancy and number of staff by autonomous cities and communities

Autonomous cities and communities	Capacity		Occupancy rate		Employed personnel
	Estimated open establishments	Estimated bed-places	Of bed-places	Of bed-places at weekend	
TOTAL	54	5,792	10.36	12.77	578
Andalucía	4	967	20.92	40.44	137
Aragón	4	277	4.16	4.96	37
Asturias, Principado de	-	-	-	-	-
Balears, Illes	-	-	-	-	-
Canarias	7	197	36.80	7.09	17
Cantabria	-	-	-	-	-
Castilla y León	4	291	3.53	5.58	70
Castilla - La Mancha	-	-	-	-	-
Cataluña	9	1,223	10.28	9.69	150
Comunitat Valenciana	5	836	11.99	10.42	29
Extremadura	3	191	1.76	6.02	8
Galicia	-	-	-	-	-
Madrid, Comunidad de	-	-	-	-	-
Murcia, Región de	3	265	5.02	8.77	11
Navarra, Comunidad Foral de	-	-	-	-	-
País Vasco	8	1,061	0.89	1.13	40
Rioja, La	-	-	-	-	-
Ceuta	-	-	-	-	-
Melilla	-	-	-	-	-
Tasa anual	-79.90	-79.92	-72.07	-66.47	-73.07
Tasa anual acumulada	-59.99	-59.23	-29.87	-25.32	-52.24

HOLIDAY DWELLING PRICE INDEX (HDPI)

June 2020

Provisional data

30th July 2020

National general index and breakdown by rates

	Index	Annual variation rate
TOTAL	139.99	-6.96
Normal	137.92	-2.46
Weekend	111.20	-14.22
Tour-operators and travel agencies	146.27	-9.91

National general index and breakdown by modalities

	Index	Annual variation rate
TOTAL	139.99	-6.96
Studio	134.35	-5.47
Dwellings 2/4 bedplaces	131.01	-13.40
Dwellings 4/6 bedplaces	165.67	7.39

Tourist Campsite Price Index (TCSPI). 2002 Base

June 2020

Provisional data

30th July 2020

National general index and breakdown by rates

	Index	Annual variation rate
TOTAL	168.07	3.19
Normal rate	164.30	1.12
Special rate for stays up to one month	152.93	3.20
Special rate for stays longer than one month	175.87	5.19
Bungalow rate ¹	110.28	4.01

¹2014 Base

National general index and breakdown by categories

	Index	Annual variation rate
TOTAL	168.07	3.19
Luxury and first	178.62	5.45
Second	156.21	0.65
Third	180.08	3.05

TCSPI (ANNEX OF TABLES) - June 2020. Provisional data

Rural Tourism Accommodation Price Index (RTAPI)

June

Provisional data

30th July 2020

General Autonomous Cities and Communities and national indices

	Index	Annual variation rate
TOTAL	142.00	-2.68
Andalucía	-	-
Aragón	-	-
Asturias, Principado de	-	-
Balears, Illes	-	-
Canarias	-	-
Cantabria	-	-
Castilla y León	-	-
Castilla - La Mancha	-	-
Cataluña	-	-
Comunitat Valenciana	-	-
Extremadura	-	-
Galicia	-	-
Madrid, Comunidad de	-	-
Murcia, Región de	-	-
Navarra, Comunidad Foral de	-	-
País Vasco	-	-
Rioja, La	-	-
Ceuta	-	-
Melilla	-	-

National general index and breakdown by rates

	Index	Annual variation rate
TOTAL	142.00	-2.68
Normal	141.09	-3.60
Weekend	144.97	-1.98

National general index and breakdown by rent modality

	Index	Annual variation rate
TOTAL	142.00	-2.68
Shared use (in case of per room rent modality)	129.26	-7.33
Full use (rent of entire dwelling)	150.41	-0.13