

31 August 2020

Non-hotel Tourist Accommodation Occupancy Survey
July 2020. Provisional data

Overnight stays in non-hotel tourist accommodation decrease by 49.9% in July, as compared with the same month of 2019

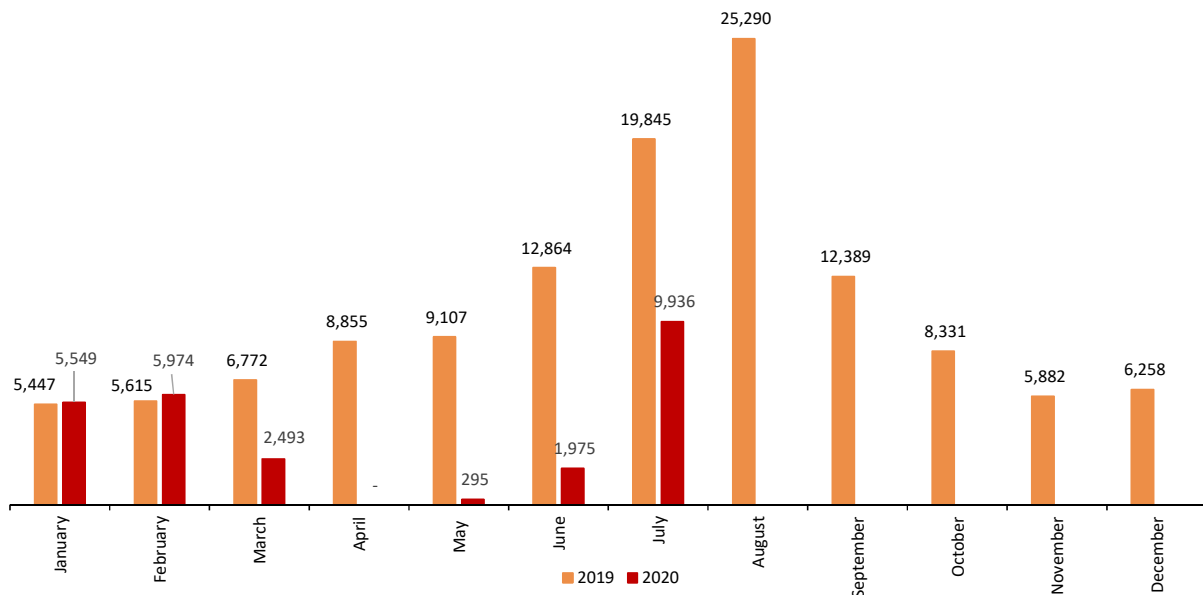
Overnight stays in rural tourism accommodation by residents in Spain grew 18.7% annually

COVID-19's effects on the Non-Hotel Tourist Accommodation Occupancy Survey in July

- In accordance with Royal Decree 555/2020¹, the state of alarm came to an end on June 21st, allowing population mobility throughout the national territory. In July, the number of open establishments (tourist apartments, campsites, rural tourism accommodations and tourist hostels) increased compared to June, going from 56,845 to 127,553. This is still 29.0% lower than in July 2019, however. The total number of bed-places offered was 1,347,477, or 80.2% of the total.
- Almost three million travellers stayed in some type of non-hotel tourist accommodation in July, with a total of 9.9 million overnight stays. This represents 60.3% of the total travellers and 50.1% of the total overnight stays estimated a year ago. Half of these overnight stays (5.0 million) were on campsites.
- The accommodation type with the greatest recovery was rural tourism. In July, rural tourism was the option of choice for 430,000 travellers, with a total 1.5 million overnight stays, 10% less than a year ago.
- Despite the progressive opening of external borders, residents of Spain provided the most support for hotel activity (1.9 million travellers compared to nearly 400 million non-residents). This is also reflected in the volume of overnight stays, which reached 7.5 million for residents, compared to 2.4 million for non-residents.
- Cataluña is the autonomous community with the most bed-places available in non-hotel establishments, with 406,565, or 6.6% less than in July 2019. It also served the most people, with 571,003 travellers making 2.6 million overnight stays.
- During the first seven months of the year, there were 26.2 million overnight stays in these types of tourist accommodations, 61.7% less than the same period for 2019.
- The data collected during July made it possible to disseminate the same information as prior to March 2020 and the COVID-19 pandemic. This data was of sufficient quality to be utilized by the interested parties. Territorial data dissemination was thus recovered for tourist points and areas.

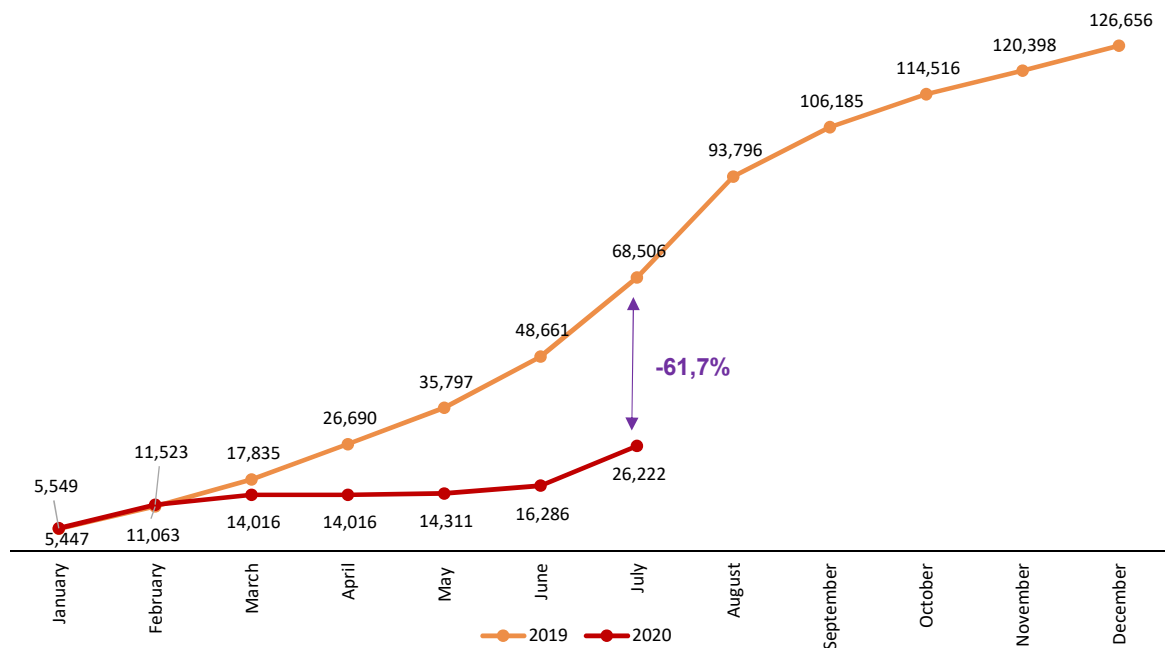
Overnight stays in non-hotel accommodation monthly. Comparative 2019-2020

Thousands



Accumulated overnight stays in non-hotel accommodation. Comparative 2019-2020

Thousands



Open establishments

In July, a total of 127,553 hotels were open in Spain¹, 29.0% less than in the same month of 2019. This represents 66.8% of the total directory of establishments in that month.

Type of accommodation	Number of open establishments according to the survey	Percentage of total establishments in the directory	Number of estimated places according to the survey	Percentage of total places in the directory
TOTAL	127,553	66.8%	1,347,477	80.2%
Holiday dwellings (*)	110,258	65.9%	451,652	69.9%
Campsites	1,091	84.8%	721,560	91.7%
Rural T.	16,040	72.3%	156,146	73.6%
Hostels	164	50.8%	18,119	53.5%
Annual rate	-29.0		-57.8	

(*) Estimated number of apartments

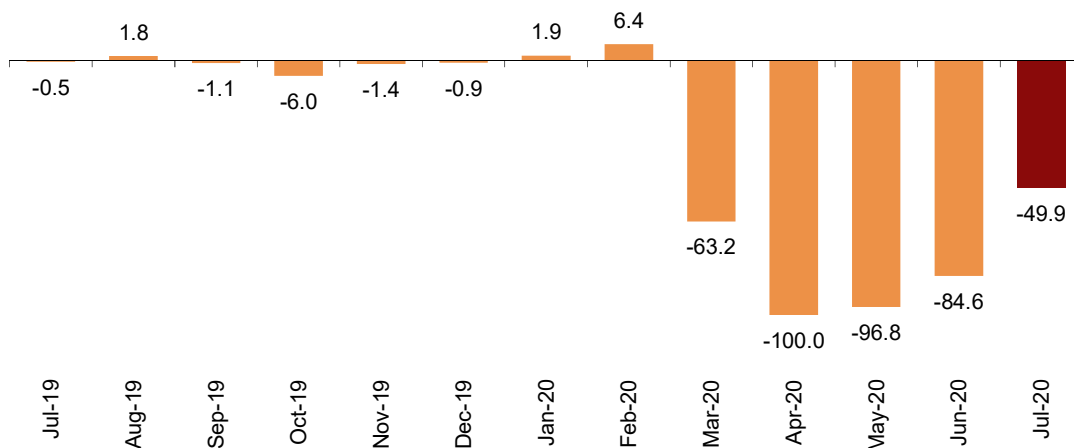
Overnight stays

Overnight stays in hotel establishments exceeded 9.9 million in July, representing a decrease of 49.9% compared to the 19.8 million for the same month of 2019.

By country of residence, overnight stays by residents of Spain decreased by 19.4% in the annual rate, exceeding 7.5 million. In turn, overnight stays by non-residents fell by 77.0%, to 2.4 million.

Annual variation rate of overnight stays

Percentage



During the first seven months of 2020, overnight stays decreased by 61.7% as compared to the same period of the previous year.

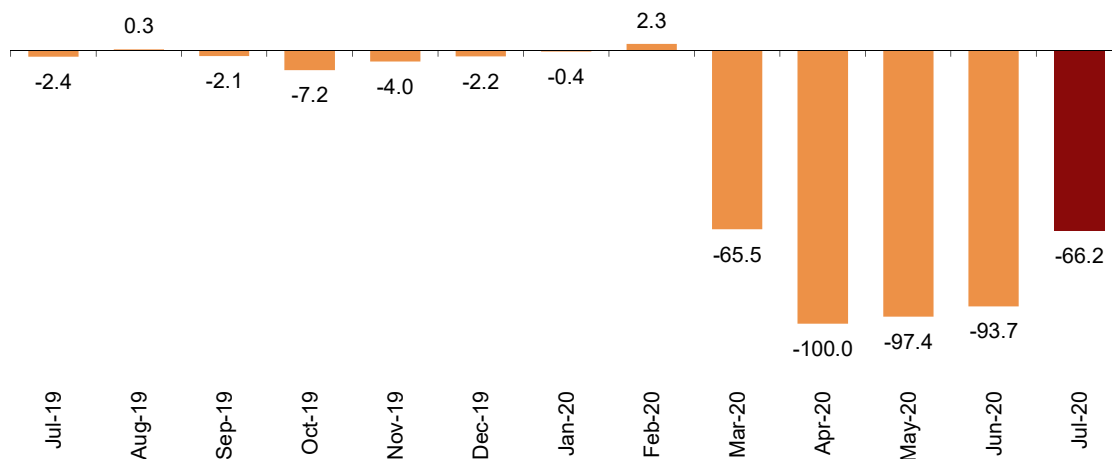
¹ The number of tourist apartments was taken into account.

Holiday Dwellings

Overnight stays at tourist apartments decreased by 66.2% in July as compared with the same month of the previous year. Resident overnight stays decreased by 35.5% and non-resident overnight stays did so by 82.4%.

Annual variation rate for overnight stays

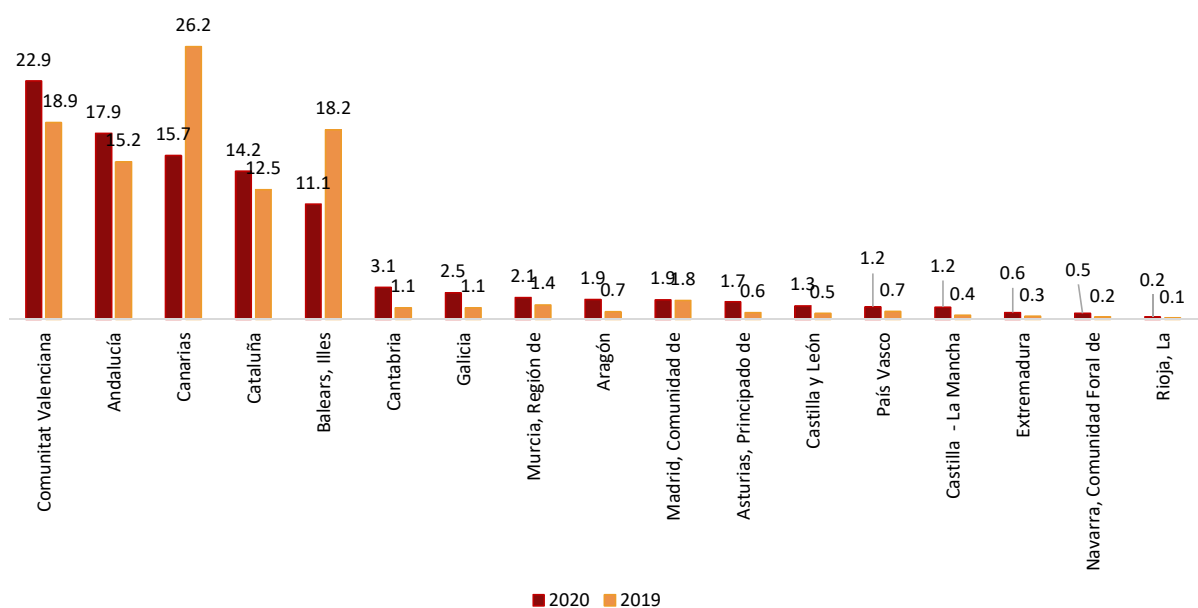
Percentage



Comunitat Valenciana, Andalucía, and Canarias were the main destinations of residents in Spain in July, with annual variation rates in the number of overnight stays of -59.1%, -60.1% and -79.7%, respectively.

Distribution of total overnight stays. Comparative July 2019-2020

Percentage



By tourist areas, Costa Blanca was the preferred destination, with 344,423 overnight stays and an occupancy rate of 19.4% for the apartments available.

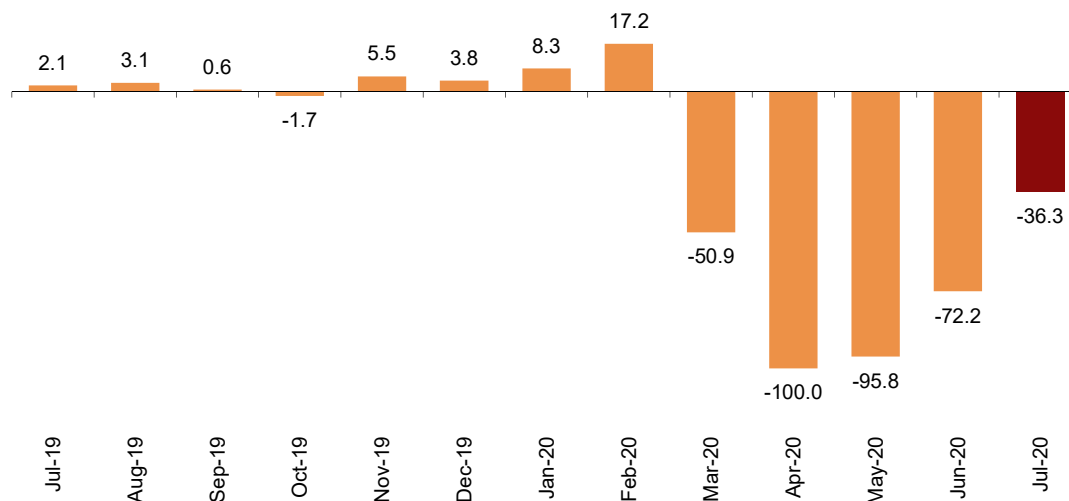
The tourist sites with the greatest number of overnight stays in July were San Bartolomé de Tirajana, Arona and Benidorm.

Tourist Campsites

Overnight stays at tourist campsites registered a decrease of 36.3% in July as compared with the same month of the previous year. Resident overnight stays decreased by 11.4% and non-resident overnight stays did so by 68.1%.

Annual variation rate for overnight stays

Percentage



During the month of July, 37.9% of the offered parcels were occupied, 20.1% more than in the same month of 2019. The weekend occupancy rate by pitch reached 42.5%, with an annual decrease of 18.1%.

Cataluña was the preferred destination for tourist campsites, with 2.0 million overnight stays, representing an annual decrease of 49.0%. La Rioja achieved the highest occupancy rate, with 63.4% of the pitches offered.

By tourist areas, Costa Brava was the preferred destination, with 862,849 overnight stays and an occupancy rate of 31.3% of the pitches offered.

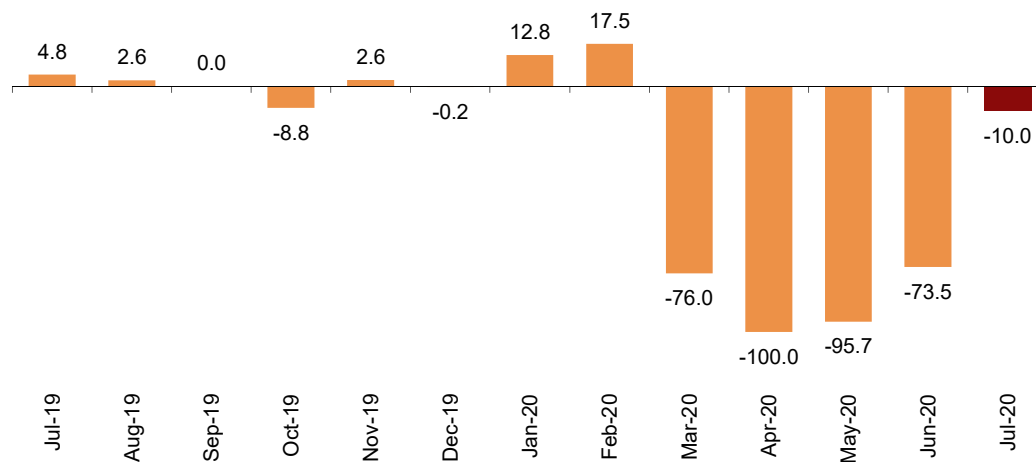
The tourist sites with more overnight stays were Torroella De Montgrí, Tarragona and Benidorm.

Rural tourism accommodation

Overnight stays in rural tourism accommodation had an annual decrease of 10.0% in July. Overnight stays by residents increased by 18.7% while those by non-residents decreased by 68.9%.

Annual variation rate for overnight stays

Percentage



In rural tourism accommodation, 30.1% of the bed-places were occupied, 3.1% more than July 2019. The weekend occupancy rate stood at 41.2%, with an annual decrease of 6.9%.

By Autonomous Community, Castilla y León was the preferred destination, with 235,465 overnight stays, 13.2% more than in July 2019. Principado de Asturias reached the highest occupancy rate, with 47.8% of bed-places offered.

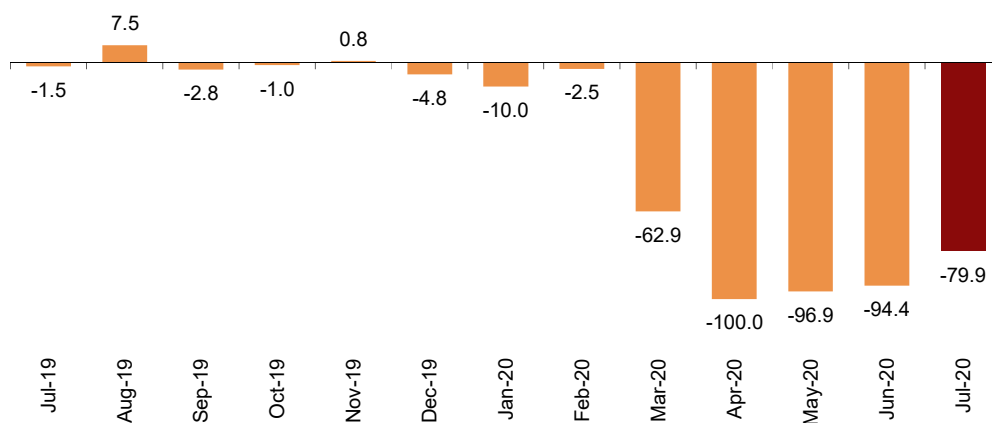
By tourist area, the Costa Verde was the preferred destination, with 105,401 overnight stays. The Parque Nacional de Picos de Europa reached the highest occupancy rate with 57.0% of the bedplaces offered.

Hostels

Overnight stays in hostels registered an annual decrease of 79.9% July. Resident overnight stays decreased by 77.9% and non-resident overnight stays did so by 86.3%.

Annual variation rate for overnight stays

Percentage



In hostels, 18.0% of the available bedplaces were occupied, 65.8% less than in July 2019. The weekend occupancy rate reached 17.7%, with a 64.7% decrease.

By Autonomous Community, Cataluña was the preferred destination, with 28,514 overnight stays, 78.9% less than in July 2019. Canarias reached the highest occupancy rate, with 35.0% of the bed-places offered.

Price indices

The Tourist Apartment Price Index (TAPI) decreased by 7.8% in July compared to the same month of 2019 and the Rural Tourism Accommodation Price Index (RTAPI) decreased by 1.4%.

On the other hand, the Tourist Campsite Price Index (TCPI) decreased by 0.3%.

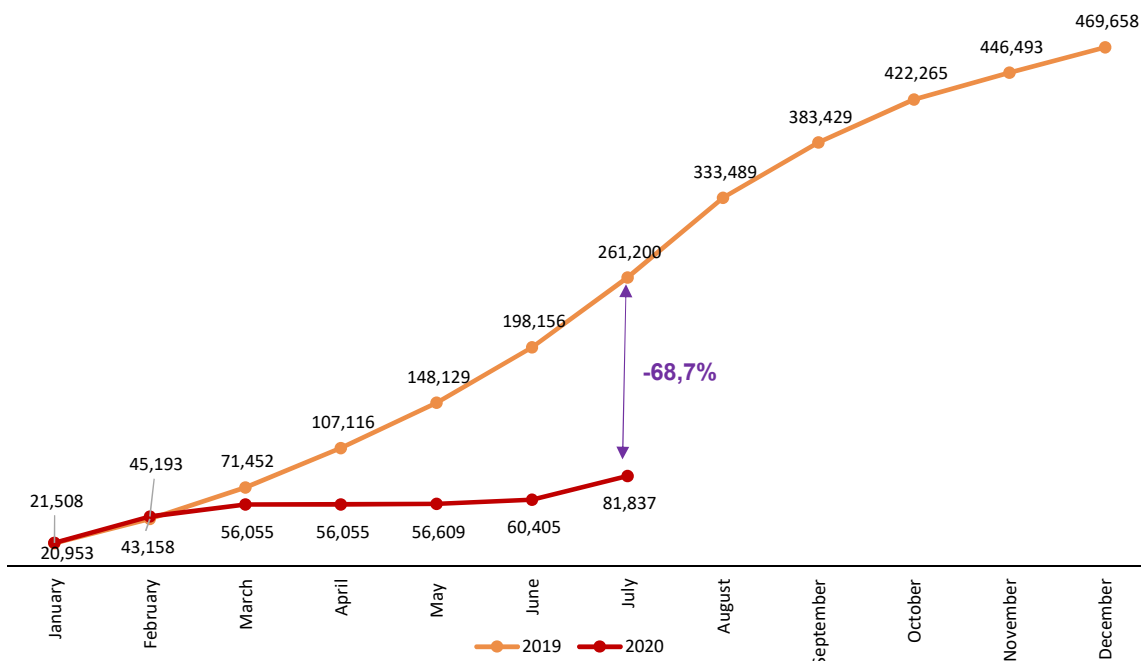
Evolution of travellers and overnight stays in all Spanish collective tourist accommodation

In July, overnight stays in Spanish collective tourist accommodations (hotels², holiday dwellings, tourist campsites, rural tourism accommodation and youth hostels) decreased by 66.0% in the annual rate.

In the first seven months of the year, overnight stays in all tourist accommodations decreased by 68.7%.

Accumulated overnight stays. Comparative 2019-2020

Thousands



² The press release regarding Hotel Tourism Short-Term Trends was published on August 24th.

Revision and updating of data

Coinciding with today's publication, the INE has updated the data for July 2019 of the Occupancy Surveys in: Holiday Dwellings (HDOS), Campsites (COS), Rural Tourism Accommodation (RTAOS) and Hostels (HOS). As well as the Holiday Dwelling Price Index (HDPI), the Tourist Campsite Price Index (TCPI) and the Rural Tourism Accommodation Price Index (RTAPI).

Methodological note

The main objective of the Holiday Dwelling Occupancy Survey (HDOS) is to ascertain the behaviour of a series of variables that make it possible to describe the segment that occupies this type of accommodation within the tourist sector, both from the point of view of supply and demand.

The Holiday Dwelling Price Index (HDPI) is a statistical measure of the monthly evolution of the prices offered by holiday dwelling establishments to their clients.

Type of operation: monthly continuous survey.

Population scope: holiday apartment establishments and/or companies operating holiday apartments.

Geographical scope: the entire national territory, with the exception of Ceuta and Melilla, where there are no establishments of this type.

Reference period of the results: the month.

Reference period for the information: The consultation of basic data refers to a fortnight of the month, chosen randomly, in such way that the complete month is covered among all establishments.

Type of sampling: stratified sampling by province and establishment size, and stratified at island-size level for Canarias and Illes Balears.

Collection method: questionnaire filled in directly by the establishment.

For more information on these statistical operations, you can consult the [methodology and the standardised methodological report](#) for each operation in INEbase.

The main objective of the Campsite Occupancy Survey (COS) is to ascertain the behaviour of a series of variables that make it possible to describe the segment that this type of accommodation occupies within the tourist sector, from the viewpoint of both supply and demand.

The Tourist Campsite Price Index (TCPI) is a statistical measure of the monthly evolution of the prices offered by campsites to their clients.

Type of operation: monthly continuous survey.

Population scope: camping establishments.

Geographical scope: the entire national territory, with the exception of Ceuta and Melilla, where there are no establishments of this type.

Reference period of the results: the month.

Reference period of the information: seven consecutive days of each month, chosen randomly in such way that, between all the establishments, the entire month is covered.

Sample size: approximately 1200 establishments.

Type of sampling: comprehensive survey in all provinces.

Collection method: questionnaire filled in directly by the establishment.

For more information on these statistical operations, you can consult the [methodology and the standardised methodological report](#) for each operation in INEbase.

The main objective of the Rural Tourism Accommodation Occupancy Survey (RTAOS) is to ascertain the behaviour of a series of variables that make it possible to describe the fundamental characteristics of this type of accommodation within the tourist sector, both from the point of view of supply and demand.

The Rural Tourism Accommodation Price Index (RTAPI) is a statistical measure of the monthly evolution of the prices that entrepreneurs of this type of accommodation apply to their clients.

Type of operation: monthly continuous survey.

Population scope: rural tourism establishments registered as such in the corresponding register of each Autonomous Community.

Geographical scope: the entire national territory, with the exception of Ceuta and Melilla where there are no establishments of this type.

Reference period of the results: the month.

Reference period for the information: The consultation of basic data refers to all the days of the month.

Type of sampling: comprehensive survey in all provinces except those where the population size is large enough to take a sample.

Collection method: questionnaire filled in directly by the establishment.

For more information on these statistical operations, you can consult the [methodology and the standardised methodological report](#) for each operation in INEbase.

The main objective of the Hostels Occupancy Survey (HOS) is to ascertain the behaviour of a series of variables that make it possible to describe the fundamental characteristics of this type of accommodation within the tourist sector, both from the point of view of supply and demand.

For more information on this statistical operation, you can consult the [methodology and the standardised methodological report](#) in INEbase.

For further information see **INEbase:** www.ine.es/en/ Twitter: [@es_ine](https://twitter.com/es_ine)

All press releases at: www.ine.es/en/prensa/prensa_en.htm

Press Office: Telephone numbers: (+34) 91 583 93 63 /94 08 – gprensa@ine.es

Information Area: Telephone number: (+34) 91 583 91 00 – www.ine.es/infoine/?L=1

Tourist Accommodation Occupancy Survey (Holiday Dwellings)

January 2020

Provisional data

28th February 2020

1. Travellers, overnight stays and average stay by Autonomous Cities and Communities

Autonomous Cities and Communities	Travellers			Overnight stays			Average stay
	Total	Residents in Spain	Residents abroad	Total	Residents in Spain	Residents abroad	
TOTAL	663,544	485,763	177,781	3,299,990	2,175,860	1,124,130	4.97
Andalucía	147,737	124,275	23,462	590,504	474,761	115,743	4.00
Aragón	16,938	16,126	812	62,498	57,395	5,103	3.69
Asturias, Principado de	13,399	12,828	571	54,628	52,595	2,033	4.08
Balears, Illes	66,776	24,335	42,441	365,223	111,242	253,981	5.47
Canarias	99,087	57,658	41,429	519,292	223,573	295,719	5.24
Cantabria	20,454	19,954	500	101,295	99,406	1,888	4.95
Castilla y León	14,564	14,238	325	42,127	41,369	758	2.89
Castilla - La Mancha	11,334	10,982	352	38,320	36,925	1,394	3.38
Cataluña	88,335	56,663	31,672	469,984	262,618	207,366	5.32
Comunitat Valenciana	118,596	91,694	26,902	756,548	569,435	187,114	6.38
Extremadura	9,079	8,648	431	21,300	20,792	508	2.35
Galicia	19,865	18,385	1,480	84,077	77,179	6,898	4.23
Madrid, Comunidad de	11,037	8,721	2,315	61,372	39,012	22,360	5.56
Murcia, Región de	8,888	7,838	1,050	68,554	62,261	6,294	7.71
Navarra, Comunidad Foral de	6,042	4,775	1,267	17,998	15,796	2,201	2.98
País Vasco	8,852	6,366	2,486	39,190	24,954	14,236	4.43
Rioja, La	2,562	2,276	286	7,081	6,547	534	2.76
Ceuta	-	-	-	-	-	-	-
Melilla	-	-	-	-	-	-	-
Annual rate	-59.02	-27.72	-81.23	-66.18	-35.51	-82.39	-17.47
Cumulative annual rate	-67.98	-58.91	-73.45	-66.22	-57.79	-69.12	5.48

2. Capacity, occupancy and number of staff by Autonomous Cities and Communities

Autonomous Cities and Communities	Capacity		Level of occupancy				Employed personnel
	Estimated bedplaces	Estimated Holiday dwelling	Per bedplaces	Per bedplaces at weekend	Per Holiday dwelling	Per Holiday dwelling at weekend	
TOTAL	451,652	110,258	23.45	25.73	33.33	36.08	20,139
Andalucía	77,506	18,875	24.51	28.17	34.53	39.47	3,935
Aragón	7,299	1,663	27.46	35.06	40.03	48.75	502
Asturias, Principado de	4,821	1,267	36.40	39.24	48.17	50.47	377
Balears, Illes	41,588	12,892	27.97	27.70	36.48	35.83	2,896
Canarias	66,716	20,669	24.94	26.99	32.19	34.66	4,391
Cantabria	5,863	1,590	54.97	57.78	69.52	73.09	453
Castilla y León	5,685	1,400	23.88	33.15	33.67	43.03	531
Castilla - La Mancha	5,026	1,233	24.54	37.94	37.62	52.42	384
Cataluña	69,941	14,550	21.58	23.97	31.95	35.51	1,904
Comunitat Valenciana	130,819	26,058	18.61	19.93	26.89	28.57	2,477
Extremadura	3,181	810	21.60	26.67	28.74	36.29	453
Galicia	7,548	1,951	35.73	37.35	49.31	51.18	520
Madrid, Comunidad de	7,943	3,061	24.91	25.13	36.95	36.31	289
Murcia, Región de	9,538	2,239	23.18	23.64	35.08	35.28	279
Navarra, Comunidad Foral de	2,066	516	27.81	32.78	43.51	47.63	385
País Vasco	4,529	1,137	27.79	31.39	42.63	45.85	253
Rioja, La	1,583	348	14.42	23.15	24.25	34.88	108
Ceuta	-	-	-	-	-	-	-
Melilla	-	-	-	-	-	-	-
Annual rate	-27.17	-31.12	-53.25	-52.02	-49.15	-48.10	-42.33
Cumulative annual rate	-49.43	-50.77	-32.96	-34.16	-26.52	-27.97	-54.13

3. Travellers, overnight stays, capacity, occupancy, total number of staff with greater number of overnight stays¹

Provinces	Travellers		Overnight stays		Average stay	Capacity		Level of occupancy			Employed personnel
	Residents in Spain	Residents abroad	Residents in Spain	Residents abroad		Estimated bed-places	Estimated holiday dwelling	Per bed-places	Per Holiday dwelling	Per Holiday dwelling at weekend	
Alicante\Alacant	43,167	15,673	239,374	124,750	6.19	81,025	16,452	14.49	19.74	21.09	1,511
Palmas, Las	29,193	21,651	124,752	170,514	5.81	35,486	11,030	26.64	33.59	35.82	2,229
Girona	26,088	21,014	142,947	143,538	6.08	37,291	7,614	24.65	34.46	36.96	913
Málaga	44,248	15,889	167,253	88,082	4.25	40,150	9,553	20.48	30.06	33.41	2,070
St Cruz de Tenerife	28,464	19,778	98,821	125,205	4.64	31,230	9,639	23.02	30.58	33.33	2,161
Castellón\Castelló	29,946	5,081	168,842	33,566	5.78	29,029	5,272	22.35	36.24	39.28	497
Valencia\València	18,581	6,148	161,219	28,797	7.68	20,765	4,334	29.48	42.65	43.93	469
Tarragona	20,113	6,288	82,652	45,761	4.86	24,756	4,872	16.68	24.93	29.34	578
Almería	21,597	1,094	96,692	4,777	4.47	12,342	2,894	26.46	37.05	41.41	392
Cádiz	17,896	1,217	72,893	5,277	4.09	7,245	1,785	34.59	49.38	55.21	480
Huelva	15,067	657	65,536	2,204	4.31	5,081	1,124	42.99	53.61	62.36	121
Pontevedra	7,861	190	45,678	656	5.75	4,210	1,001	35.38	46.88	48.78	230
Barcelona	6,960	4,337	26,110	17,896	3.90	5,635	1,540	25.16	45.34	51.78	323
Huesca	10,365	461	38,786	2,412	3.81	4,296	943	30.76	43.79	53.86	263
Sevilla	7,427	3,040	18,365	11,450	2.85	4,328	1,340	22.18	39.59	43.57	317

¹ Provinces belonging to uniprovincial Autonomous Communities have not been included because they are reflected in previous tables.

4. Travellers, overnight stays, capacity, occupancy, total number of staff from tourist areas with greater number of overnight stays

Tourist Areas	Travellers		Overnight stays		Average stay	Capacity		Level of occupancy			Employed personnel
	Residents in Spain	Residents abroad	Residents in Spain	Residents abroad		Estimated bed-places	Estimated holiday dwelling	Per bed-places	Per Holiday dwelling	Per Holiday dwelling at weekend	
Costa Blanca	40,223	15,429	221,402	123,021	6.19	77,442	15,739	14.34	19.41	20.62	1,339
Costa Brava	23,231	20,616	126,435	141,457	6.11	36,029	7,337	23.95	33.05	35.48	733
Costa del Sol (Málaga)	38,324	14,124	148,320	80,629	4.37	36,878	8,751	19.99	29.43	32.00	1,912
Costa de Castellón	28,933	5,081	162,114	33,427	5.75	27,685	4,981	22.63	35.90	39.04	441
Tenerife	20,733	18,975	68,096	118,868	4.71	27,256	8,262	22.00	29.20	31.78	1,910
Ibiza-Formentera	11,787	17,302	48,318	92,310	4.83	14,193	4,789	31.20	39.46	38.68	1,078
Gran Canaria	17,722	7,912	76,844	62,386	5.43	16,482	5,286	27.01	32.03	36.11	1,102
Costa Valencia (Valencia)	9,312	831	130,558	7,579	13.62	15,143	3,026	29.41	38.19	36.76	206
Mallorca	3,334	16,783	18,325	115,619	6.66	14,316	4,327	30.03	40.14	39.21	1,030
Costa Daurada	18,978	5,720	76,665	41,161	4.77	23,328	4,572	16.24	24.45	28.92	514

5. Travellers, overnight stays, capacity, occupancy, total number of staff from tourist sites with greater number at overnights stays

Tourist sites	Travellers		Overnight stays		Average stay	Capacity		Level of occupancy			Employed personnel
	Residents in Spain	Residents abroad	Residents in Spain	Residents abroad		Estimated bed-places	Estimated holiday dwelling	Per bed-places	Per Holiday dwelling	Per Holiday dwelling at weekend	
SAN BARTOLOMÉ DE TIR, ARONA	11,816	5,897	54,087	50,845	5.92	11,193	3,760	29.89	33.87	37.46	736
BENIDORM	5,913	9,111	19,504	59,031	5.23	13,338	4,204	18.94	23.36	24.52	844
ADEJE	6,746	5,348	32,335	31,563	5.28	27,799	6,005	7.41	13.01	14.85	438
TORROELLA DE MONTGR	6,063	6,681	18,367	40,963	4.66	7,012	1,849	26.99	40.59	44.36	449
MADRID	7,185	3,337	27,912	26,435	5.17	5,611	1,178	31.25	38.61	40.29	87
PENÍSCOLA	6,795	2,270	31,697	22,168	5.94	7,216	2,803	24.07	35.15	34.55	227
ALCALÀ DE XIVERT	6,646	1,642	38,036	13,686	6.24	8,029	1,429	20.45	31.74	34.52	210
OROPESA DEL MAR	8,532	804	45,862	5,225	5.47	5,824	1,176	28.29	47.72	49.32	93
CALVIÀ	8,700	2,228	39,117	11,803	4.66	7,405	1,256	22.18	32.00	37.79	62
	1,218	6,386	6,236	41,514	6.28	4,381	1,416	35.01	42.58	41.93	311

6. Travellers and overnight stays by countries of residence

Countries	Travellers		Overnight stays	
	Total	%	Total	%
TOTAL	663,544	100.00	3,299,990	100.00
Residents in Spain	485,763	73.21	2,175,860	65.94
Residents abroad	177,781	26.79	1,124,130	34.06
Total residents abroad	177,781	100.00	1,124,130	100.00
Total residents in E.U (excluding Spain)	118,015	66.38	758,382	67.46
- Germany	22,723	12.78	166,316	14.80
- Austria	556	0.31	3,342	0.30
- Belgium	9,038	5.08	65,068	5.79
- Denmark	1,775	1.00	11,721	1.04
- Finland	277	0.16	2,124	0.19
- France	35,221	19.81	218,253	19.42
- Greece	166	0.09	764	0.07
- Ireland	3,121	1.76	21,492	1.91
- Italy	11,532	6.49	67,789	6.03
- Luxembourg	362	0.20	2,384	0.21
- Netherlands	18,225	10.25	118,999	10.59
- Poland	4,534	2.55	22,407	1.99
- Portugal	2,946	1.66	17,180	1.53
- United Kingdom	966	0.54	4,653	0.41
- Czech Republic	1,177	0.66	8,161	0.73
- Sweden	5,395	3.03	27,731	2.47
- Other EU countries	587	0.33	4,333	0.39
Norway	37,378	21.02	233,542	20.78
United Kingdom	810	0.46	3,453	0.31
Switzerland	4,296	2.42	31,660	2.82
Other european countries	4,275	2.40	20,763	1.85
United States of America	1,336	0.75	6,373	0.57
Rest of America	4,143	2.33	34,867	3.10
African countries	1,836	1.03	8,849	0.79
Other countries	5,105	2.87	21,907	1.95

Tourist Accommodation Occupancy Survey Campsite Occupancy Survey (COS)

July 2020

Provisional data

31st August 2020

1. Travellers, overnight stays and average stay by category of establishment

Category	Travellers			Overnight stays			Average stay
	Total	Residents in Spain	Residents abroad	Total	Residents in Spain	Residents abroad	
TOTAL	1,176,072	1,011,518	164,554	5,071,608	3,955,195	1,116,413	4.31
Luxury and first-class	505,004	427,308	77,696	2,266,746	1,727,956	538,790	4.49
Second-class	550,670	476,718	73,952	2,313,847	1,813,234	500,613	4.20
Third-class	120,398	107,491	12,906	491,015	414,005	77,010	4.08
Annual rate	-24.28	-1.45	-68.77	-36.30	-11.44	-68.06	-15.87
Cumulative annual rate	-56.53	-46.53	-76.29	-54.88	-46.65	-63.28	3.81

2. Open establishments, capacity, occupancy and number of staff by category of establishments

Category	Estimated open establishments	Capacity		Occupied pitches	Occupancy rate per pitch	Weekend occupancy rate	Employed personnel
		Estimated bedplaces	Estimated pitches				
TOTAL	1,091	721,560	217,835	2,560,959	37.92	42.47	11,655
Luxury and first-class	279	311,639	90,630	1,051,014	37.41	42.54	5,340
Second-class	601	330,396	103,047	1,216,395	38.08	42.35	5,042
Third-class	211	79,526	24,157	293,550	39.20	42.72	1,273
Annual rate	-8.32	-5.36	-5.93	-24.86	-20.12	-18.10	-17.95
Cumulative annual rate	-47.37	-48.75	-48.39	-50.05	-3.49	-7.22	-51.06

3. Travellers, overnight stays and average stay by Autonomous Cities and Communities

Autonomous cities and communities	Travellers			Overnight stays			Average stay
	Total	Residents in Spain	Residents abroad	Total	Residents in Spain	Residents abroad	
TOTAL	1,176,072	1,011,518	164,554	5,071,608	3,955,195	1,116,413	4.31
Andalucía	153,891	143,483	10,407	554,507	498,099	56,408	3.60
Aragón	64,299	52,347	11,952	197,016	161,528	35,488	3.06
Asturias, Principado de	56,700	52,204	4,496	226,980	214,862	12,118	4.00
Balears, Illes ¹	7,113	3,777	3,336	30,056	12,854	17,202	4.23
Canarias ¹	3,430	3,426	4	13,528	9,378	4,150	3.94
Cantabria	65,265	58,370	6,896	339,425	317,903	21,522	5.20
Castilla y León	58,083	55,129	2,954	156,607	151,005	5,602	2.70
Castilla - La Mancha	13,755	13,118	637	34,701	33,881	820	2.52
Cataluña	426,041	334,582	91,459	2,013,058	1,287,127	725,930	4.73
Comunitat Valenciana	97,415	85,570	11,845	648,071	464,207	183,864	6.65
Extremadura	13,867	12,917	950	41,584	39,302	2,283	3.00
Galicia	67,824	62,989	4,835	263,624	251,398	12,226	3.89
Madrid, Comunidad de	36,783	35,337	1,446	134,730	131,473	3,257	3.66
Murcia, Región de	26,873	25,748	1,124	123,906	115,573	8,334	4.61
Navarra, Comunidad Foral de	32,545	30,163	2,382	114,188	108,907	5,280	3.51
País Vasco	38,100	28,709	9,391	124,418	103,070	21,348	3.27
Rioja, La	14,090	13,650	440	55,209	54,627	582	3.92
Ceuta	-	-	-	-	-	-	-
Melilla	-	-	-	-	-	-	-

¹ The size of the sample in these communities does not facilitate the INE the broken down results, with the objective of maintaining statistical secrecy. Nevertheless, the data corresponding to these communities are included in the national total.

4. Open establishments, capacity, occupancy and number of staff by autonomous cities and communities

Autonomous cities and communities	Estimated open establishments	Capacity Estimated bedplaces	Estimated pitches	Occupied pitches	Occupancy rate per pitch	Weekend occupancy rate	Employed personnel
TOTAL	1,091	721,560	217,835	2,560,959	37.92	42.47	11,655
Andalucía	136	78,329	24,803	238,636	31.04	37.81	1,267
Aragón	82	29,756	9,086	97,483	34.61	40.51	601
Asturias, Principado de	51	26,766	8,293	105,043	40.86	43.42	396
Balears, Illes ¹	7	2,797	1,222	12,357	32.61	33.10	93
Canarias ¹	6	3,836	1,525	9,548	20.20	27.81	33
Cantabria	49	35,565	11,413	161,973	45.78	51.62	407
Castilla y León	76	31,793	9,495	84,072	28.56	29.98	476
Castilla - La Mancha	26	9,856	2,641	19,812	24.20	33.76	142
Cataluña	319	315,257	90,932	1,030,564	36.56	40.98	5,080
Comunitat Valenciana	118	74,503	23,111	331,429	46.26	50.46	1,107
Extremadura	23	9,259	3,039	21,657	22.99	31.82	210
Galicia	107	36,191	11,454	114,775	32.32	35.79	676
Madrid, Comunidad de	19	17,298	5,925	114,396	62.28	54.00	273
Murcia, Región de	16	14,708	4,837	55,261	36.85	47.32	366
Navarra, Comunidad Foral de	24	14,240	3,767	60,509	51.82	61.54	212
País Vasco	25	13,158	3,863	55,744	46.54	55.51	230
Rioja, La	8	8,249	2,429	47,700	63.36	64.77	86
Ceuta	-	-	-	-	-	-	-
Melilla	-	-	-	-	-	-	-

¹ The size of the sample in these communities does not facilitate the INE the broken down results, with the objective of maintaining statistical secrecy. Nevertheless, the data corresponding to these communities are included in the national total.

5. Travellers and overnight stays, average stay, capacity, occupancy and number of staff by provinces with the greatest number of overnight stays¹

Provinces	Travellers		Overnight stays		Average stay	Estimated open establishments	Estimated pitches	Occupancy rate per pitch	Employed personnel
	Residents in Spain	Residents abroad	Residents in Spain	Residents abroad					
Girona	125,705	58,338	448,579	495,040	5.13	132	42,564	32.59	2,652
Tarragona	106,184	21,137	468,589	172,948	5.04	64	24,741	36.40	1,363
Alicante\Alacant	33,869	5,169	168,061	153,735	8.24	46	10,349	54.93	488
Barcelona	72,964	9,613	262,699	52,243	3.81	72	16,488	45.53	772
Cádiz	56,124	3,805	179,832	11,708	3.20	27	6,719	35.15	435
Valencia\València	31,911	4,202	170,708	15,480	5.16	37	6,504	44.66	300
Huesca	44,125	10,513	138,786	32,220	3.13	61	7,137	38.84	506
Pontevedra	41,567	2,230	160,844	6,514	3.82	45	6,195	37.79	404
Castellón\Castelló	19,791	2,474	125,438	14,648	6.29	35	6,257	33.59	319
Huelva	29,712	1,084	130,000	4,445	4.37	12	4,850	30.97	146
Lleida	29,729	2,370	107,261	5,700	3.52	51	7,140	40.06	294
Coruña, A	19,059	2,201	84,890	4,965	4.23	48	4,317	29.49	224
Málaga	16,994	2,157	58,791	27,088	4.48	28	4,543	31.09	223
Gipuzkoa	18,571	6,873	60,018	16,153	2.99	14	2,419	44.50	132
Almería	15,762	1,532	50,979	8,360	3.43	23	2,859	36.91	167

¹ Provinces belonging to uniprovincial Autonomous Communities have not been included because they are reflected in previous tables.

6. Travellers, overnight stays, average stay, open establishments, capacity, occupancy and number of staff from tourist areas with the greatest number of overnight stays

Tourist areas	Travellers		Overnight stays		Average stay	Estimated open establishments	Estimated pitches	Occupancy rate per pitch	Employed personnel
	Residents in	Residents abroad	Residents in	Residents abroad					
	Spain		Spain						
Costa Brava	99,213	57,527	370,893	491,956	5.50	96	38,401	31.34	2,445
Costa Daurada	87,442	18,722	395,387	156,633	5.20	49	21,553	36.00	1,239
Costa Barcelona	51,889	9,384	205,961	51,881	4.21	43	12,838	43.86	559
Costa Blanca	27,950	4,367	129,664	126,458	7.93	38	7,937	59.53	414
pn Aiguamolls de l'Empordà	16,008	19,015	77,938	164,000	6.91	22	10,056	31.21	708
Pirineus	65,812	3,013	211,154	8,207	3.19	96	12,576	44.94	631
Costa Verde	45,831	3,766	202,066	11,026	4.30	42	7,234	43.51	365
Rías Baixas	50,105	2,656	184,702	7,774	3.65	57	7,836	34.29	505
Costa de la Luz (Cádiz)	54,659	3,443	176,280	10,799	3.22	23	6,101	36.37	415
Pirineo Aragonés	43,557	10,380	137,097	31,877	3.13	57	6,863	38.46	495
Costa Valencia	19,331	3,025	138,784	12,220	6.75	20	4,451	47.85	202
Costa de la Luz (Huelva)	28,839	944	128,396	4,064	4.45	9	4,639	31.46	133
Costa de Castellón	16,163	2,342	107,707	14,277	6.59	27	5,511	33.76	290
Costa Cálida	18,072	925	91,290	6,903	5.17	8	3,776	36.16	298
Terres de l'Ebre	18,742	2,415	73,201	16,315	4.23	15	3,187	39.07	124

7. Travellers, overnight stays, average stay, open establishments, capacity, occupancy and number of staff from tourist sites with the greatest number at overnights stays

Tourist sites	Travellers		Overnight stays		Average stay	Estimated open establishments	Estimated pitches	Occupancy rate per pitch	Employed personnel
	Residents in	Residents abroad	Residents in	Residents abroad					
	Spain		Spain						
Torroella De Montgrí	9,665	9,474	40,875	81,477	6.39	8	4,220	43.71	474
Tarragona	21,218	3,858	85,821	30,287	4.63	7	3,075	46.64	284
Benidorm	3,850	1,608	16,937	95,928	20.68	10	3,648	71.82	138
Mont-Roig Del Camp	10,141	3,483	72,704	35,980	7.98	6	4,209	28.38	170
Blanes	13,641	4,721	57,441	40,550	5.34	11	3,294	41.30	225
Sant Pere Pescador	6,578	7,900	28,077	67,221	6.58	7	3,676	38.64	304
Noja	12,880	763	83,075	3,645	6.36	5	2,535	48.91	71
Castelló D'Empúries	4,743	6,526	27,425	58,361	7.61	5	3,353	31.99	260
Calonge	4,933	5,652	17,033	53,238	6.64	5	3,395	22.92	200
Pals	4,590	5,384	18,889	47,773	6.68	5	3,097	23.34	167
Cambrils	12,670	1,598	55,101	10,840	4.62	6	3,088	35.72	156
Tarifa	21,380	3,233	55,331	9,212	2.62	7	1,762	44.65	161

8. Travellers and overnight stays by countries of residence

Countries	Travellers		Overnight stays	
	Total	%	Total	%
TOTAL	1,176,072	100.00	5,071,608	100.00
Residents in Spain	1,011,518	86.01	3,955,195	77.99
Residents abroad	164,554	13.99	1,116,413	22.01
TOTAL residents abroad	164,554	100.00	1,116,413	100.00
TOTAL residents in EU (excluding Spain)	141,168	85.79	913,459	81.82
- Germany	20,439	12.42	126,871	11.36
- Austria	716	0.44	2,491	0.22
- Belgium	12,159	7.39	103,902	9.31
- Denmark	442	0.27	3,519	0.32
- Finland	176	0.11	1,201	0.11
- France	51,106	31.06	278,738	24.97
- Greece	120	0.07	241	0.02
- Ireland	1,470	0.89	8,481	0.76
- Italy	2,998	1.82	9,062	0.81
- Luxembourg	91	0.06	845	0.08
- Netherlands	42,786	26.00	351,668	31.50
- Poland	1,085	0.66	3,253	0.29
- Portugal	3,301	2.01	10,371	0.93
- Czech Republic	459	0.28	899	0.08
- Sweden	382	0.23	3,181	0.28
- Other EU countries	3,437	2.09	8,736	0.78
Norway	61	0.04	2,017	0.18
United Kingdom	11,089	6.74	158,005	14.15
Russia	222	0.14	572	0.05
Switzerland	3,653	2.22	16,188	1.45
Other European countries	2,155	1.31	7,251	0.65
United States of America	492	0.30	1,416	0.13
Rest of America	1,661	1.01	4,297	0.38
African countries	223	0.14	659	0.06
Other countries	3,829	2.33	12,549	1.12

¹ Non-significant data

Tourist accommodation occupancy survey

(Rural tourist accommodation)

July 2020

Provisional data

31st August 2020

1. Number of travellers, overnight stays and average stay by Autonomous City and Community

Autonomous Communities	Number of travellers			Number of overnight stays			Average stay
	Total	Residents In Spain	Residents abroad	Total	Residents In Spain	Residents abroad	
TOTAL	430,092	387,426	42,666	1,462,784	1,297,315	165,469	3.40
Andalucía	43,966	39,192	4,773	169,118	146,161	22,957	3.85
Aragón	18,036	16,639	1,397	71,113	63,831	7,283	3.94
Asturias, Principado de	49,082	47,287	1,796	218,504	212,076	6,427	4.45
Balears, Illes	21,253	7,163	14,089	82,114	22,198	59,916	3.86
Canarias	4,189	3,710	479	19,731	14,844	4,887	4.71
Cantabria	36,662	32,380	4,281	103,125	91,280	11,845	2.81
Castilla y León	74,457	70,614	3,843	235,465	228,953	6,512	3.16
Castilla-La Mancha	28,699	28,362	337	85,849	84,887	962	2.99
Cataluña	50,513	45,765	4,748	167,866	145,353	22,513	3.32
Comunitat Valenciana	14,947	14,211	736	48,345	45,236	3,109	3.23
Extremadura	22,112	20,473	1,639	57,639	53,242	4,396	2.61
Galicia	15,117	14,061	1,056	41,105	38,071	3,035	2.72
Madrid, Comunidad de	11,787	11,055	732	27,575	25,628	1,947	2.34
Murcia, Región de	6,883	6,530	352	21,803	21,054	749	3.17
Navarra, Comunidad Foral de	15,623	15,211	411	67,935	64,576	3,360	4.35
País Vasco	13,766	11,931	1,834	38,357	33,045	5,312	2.79
Rioja, La	3,002	2,841	162	7,140	6,881	259	2.38
Ceuta	-	-	-	-	-	-	-
Melilla	-	-	-	-	-	-	-
Annual rate	-16.59	-0.71	-65.98	-9.98	18.71	-68.90	7.92
Cumulative annual rate	-57.31	-51.66	-78.93	-52.95	-43.22	-76.45	10.21

2. Open rural establishments, bed-places, occupancy rates and employed personnel by Autonomous City and Community

Autonomous Communities	Estimated open rural establishments	Estimated bed-places	Occupancy rate			Employed personnel
			Of bed-places	Of bed-places at weekend	Of bedrooms	
TOTAL	16,040	156,146	30.07	41.23	38.10	23,991
Andalucía	2,330	18,986	28.65	38.05	37.01	3,136
Aragón	1,089	8,630	26.42	37.40	33.57	1,284
Asturias, Principado de	1,426	14,638	47.82	48.51	56.93	2,098
Balears, Illes	362	7,259	36.31	39.76	40.95	1,926
Canarias	461	2,589	24.52	28.40	38.65	569
Cantabria	492	7,967	41.45	53.12	49.65	939
Castilla y León	3,299	29,796	25.39	38.66	33.77	4,470
Castilla-La Mancha	1,525	12,968	21.25	37.52	27.56	2,019
Cataluña	1,864	16,897	31.90	48.89	39.86	2,491
Comunitat Valenciana	648	7,463	20.83	28.58	35.48	1,041
Extremadura	597	7,295	25.44	37.10	31.95	949
Galicia	415	5,382	24.42	34.49	27.74	799
Madrid, Comunidad de	213	3,388	26.20	44.91	36.26	563
Murcia, Región de	151	2,348	29.88	46.26	38.83	278
Navarra, Comunidad Foral de	718	5,574	39.11	50.19	47.54	889
País Vasco	355	3,981	30.69	44.40	36.55	438
Rioja, La	95	985	23.24	46.72	27.86	103
Ceuta	-	-	-	-	-	-
Melilla	-	-	-	-	-	-
Annual rate	-11.68	-12.49	3.10	-6.93	8.42	-15.31
Cumulative annual rate	-43.86	-45.31	-14.20	-19.81	-8.49	-38.30

3. Number of travellers, overnight stays and average stay in Provinces with the greatest number of overnight stays¹

Provinces	Number of travellers			Number of overnight stays			Average stay
	Total	Residents In Spain	Residents abroad	Total	Residents In Spain	Residents abroad	
Málaga	16,821	14,021	2,800	84,417	66,962	17,454	5.02
Girona	21,756	18,011	3,746	74,575	58,953	15,623	3.43
Ávila	13,946	13,913	33	55,926	55,847	80	4.01
Barcelona	15,169	14,723	445	46,513	44,214	2,300	3.07
Cáceres	17,935	16,467	1,468	45,374	41,492	3,883	2.53
Huesca	10,237	9,027	1,210	44,350	37,553	6,797	4.33
León	12,012	11,184	828	37,536	35,760	1,776	3.12
Lleida	8,642	8,452	189	31,365	29,440	1,925	3.63
Burgos	9,964	9,095	869	29,858	28,452	1,407	3.00
Segovia	10,345	10,101	244	26,484	26,101	383	2.56
Albacete	8,304	8,304	0	25,407	25,407	0	3.06
Salamanca	7,065	6,825	240	23,549	23,084	465	3.33
Gipúzkoa	7,653	6,359	1,294	22,233	18,769	3,464	2.91
Soria	6,874	6,829	44	21,097	21,005	92	3.07
Córdoba	5,149	4,370	780	19,374	17,827	1,547	3.76

¹ Provinces belonging to uniprovincial Autonomous Communities have not been included because they are reflected in previous tables.

4. Open rural establishments, bed-places, occupancy rates and employed personnel in Provinces with the highest number of overnight stays¹

Provinces	Estimated open rural establishments	Estimated bed-places	Occupancy rate			Employed personnel
			Of bed-places	Of bed-places at weekend	Of bedrooms	
Málaga	1,373	9,097	29.83	32.28	39.50	1,788
Girona	597	6,204	38.57	52.55	46.31	727
Ávila	730	6,021	29.80	45.19	41.50	818
Barcelona	491	4,249	35.11	60.61	42.64	727
Cáceres	456	5,664	25.80	38.98	32.18	715
Huesca	601	4,604	30.82	39.29	39.30	701
León	430	3,399	35.36	41.21	45.31	641
Lleida	511	3,952	25.54	40.42	34.83	715
Burgos	420	4,287	22.40	33.56	30.15	526
Segovia	403	3,811	22.40	47.40	28.52	567
Albacete	713	4,617	17.70	30.81	23.75	974
Salamanca	443	3,739	20.27	32.65	26.84	654
Gipúzkoa	169	1,929	36.55	44.14	43.65	207
Soria	274	2,655	25.50	37.12	33.02	307
Córdoba	239	2,468	25.25	38.61	30.85	302

¹ Provinces belonging to uniprovincial Autonomous Communities have not been included because they are reflected in previous tables.

5. Number of travellers, overnight stays, average stay, capacity and occupancy rates in areas with the highest number of overnight stays

Areas	Number of travellers		Number of overnight stays			Capacity		Occupancy rate		
	Residents In Spain	Residents abroad	Residents In Spain	Residents abroad	Average stay	Estimated open rural establish.	Estimated bed-places	Of bed-places	Of bed-places at weekend	Of bedrooms
Costa Verde (Asturias)	20,628	713	102,592	2,809	4.94	595	6,691	50.53	52.19	61.42
Pirineus	17,635	1,084	55,699	5,630	3.28	738	6,468	30.39	50.71	37.30
Isla de Mallorca	4,103	10,941	12,526	47,588	4.00	278	5,710	33.77	34.55	38.50
Pirineo Navarro	12,897	402	55,843	3,342	4.45	587	4,526	41.97	51.12	50.77
Costa Brava	11,335	3,106	40,498	13,865	3.76	396	3,997	43.77	55.83	52.95
P.Nacional Picos de Europa	14,161	949	49,718	3,158	3.50	314	2,980	56.99	54.44	63.59
Pirineo Aragonés	8,848	1,152	34,952	6,449	4.14	549	4,230	31.37	40.93	39.75
Extremadura Norte	12,682	944	32,152	2,299	2.53	299	3,856	28.79	41.97	34.95
Costa del Sol (Málaga)	3,121	528	21,090	5,003	7.15	252	1,744	47.87	44.17	62.14
Sierras de Tejeda, Almijara y Alhama	4,617	669	22,000	4,074	4.93	454	2,775	30.21	32.10	42.84
Rías Baixas	4,526	224	15,797	866	3.51	118	1,488	35.63	47.77	39.50
Isla de Menorca	2,567	1,618	8,323	6,180	3.47	58	1,028	45.35	56.59	47.89
Costa de Gipuzkoa	3,591	763	10,001	1,843	2.72	63	747	50.37	57.78	58.31
Parque Nacional Sierra de Guadarram	5,648	548	10,593	1,191	1.90	98	1,503	25.26	46.30	31.37
Costa Barcelona	3,809	126	9,915	288	2.59	110	919	35.07	51.60	45.98

6. Number of travellers, overnight stays, average stay, capacity, occupancy rates and employed personnel per rural house by Autonomous City and Community²

Autonomous Communities	Number of travellers		Number of overnight stays			Capacity		Occupancy rate		Employed personnel
	Residents In Spain	Residents abroad	Residents In Spain	Residents abroad	Average stay	Estimated open rural establish.	Estimated bed-places	Of bed-places	Of bed-places at weekend	
TOTAL	265,181	20,956	939,572	91,282	3.60	13,651	114,653	28.85	40.78	18,057
Andalucía	38,887	4,683	145,322	22,751	3.86	2,327	18,832	28.71	38.05	3,127
Aragón	13,866	1,302	52,692	6,488	3.90	908	7,082	26.76	38.35	1,085
Asturias, Principado de	18,487	321	84,005	1,036	4.52	872	5,906	45.98	44.50	1,067
Balears, Illes	3,066	4,254	9,059	14,395	3.20	134	2,201	34.11	39.18	429
Canarias	3,029	343	13,417	4,458	5.30	453	2,397	24.00	26.88	520
Cantabria	7,745	1,082	28,792	4,128	3.73	241	2,954	35.76	40.95	369
Castilla y León	44,225	567	175,463	2,180	3.97	2,932	22,298	25.60	38.85	3,554
Castilla-La Mancha	27,355	333	81,667	958	2.98	1,500	12,142	21.84	38.58	1,982
Cataluña	45,765	4,748	145,353	22,513	3.32	1,864	16,897	31.90	48.89	2,491
Comunitat Valenciana	11,853	704	37,779	2,980	3.25	612	5,495	23.84	32.92	932
Extremadura	11,118	445	29,356	1,548	2.67	382	3,711	26.78	37.72	519
Galicia	9,010	574	27,217	1,940	3.04	301	3,646	25.52	36.44	529
Madrid, Comunidad de	2,417	6	9,394	10	3.88	86	1,128	26.88	39.45	107
Murcia, Región de	5,197	308	19,036	658	3.58	137	1,981	32.01	48.98	225
Navarra, Comunidad Foral de	13,465	326	55,482	2,339	4.19	599	4,685	39.58	51.92	758
País Vasco	6,854	794	18,657	2,641	2.78	210	2,312	29.29	46.41	261
Rioja, La	2,841	162	6,881	259	2.38	95	985	23.24	46.72	103
Ceuta	-	-	-	-	-	-	-	-	-	-
Melilla	-	-	-	-	-	-	-	-	-	-

² To facilitate the comparability between data from different Autonomous Communities (and because of the different regulation and different characteristics), a group called rural house has been created, with those establishments with similar typology (location, capacity, etc...).

The variables included in the previous table have been estimated with that type of establishments.

9. Travellers and overnight stays by country of residence

Results by countries	Travellers		Overnight stays	
	Total	%	Total	%
TOTAL	430,092	100.00	1,462,784	100.00
Residents in Spain	387,426	90.08	1,297,315	88.69
Residents abroad	42,666	9.92	165,469	11.31
Total Residents abroad	42,666	100.00	165,469	100.00
TOTAL Residents in EU-27 ¹ (without Spain)	28,451	66.68	120,398	72.76
- Germany	9,646	22.61	44,781	27.06
- Belgium	3,083	7.23	13,735	8.30
- France	7,029	16.47	26,240	15.86
- Italy	1,218	2.85	3,657	2.21
- Netherlands	3,868	9.07	18,387	11.11
- Portugal	823	1.93	2,764	1.67
United Kingdom	3,409	7.99	14,735	8.90
Switzerland	1,108	2.60	5,345	3.23
Other European countries	3,835	8.99	15,242	9.21
United States of America	332	0.78	1,185	0.72
Other countries	8,314	19.49	19,397	11.72

¹ Since 31 January 2020, The United Kingdom is no longer part of the E.U., hence the aggregate UE-27 is published.

Tourist Accommodation Occupancy Survey Hostels Occupancy Survey (HOS)

July 2020

Provisional data

31th August 2020

1. Travellers, overnight stays and average stay by Autonomous Cities and Communities

Autonomous cities and communities	Travellers			Overnight stays			Average stay
	Total	Residents in Spain	Residents abroad	Total	Residents in Spain	Residents abroad	
TOTAL	25,156	20,916	4,239	101,153	84,993	16,159	4.02
Andalucía	4,618	4,618	0	14,196	14,196	0	3.07
Aragón	1,576	1,527	49	6,563	6,511	52	4.16
Asturias, Principado de	-	-	-	-	-	-	-
Balears, Illes	-	-	-	-	-	-	-
Canarias	672	286	387	4,312	919	3,393	6.41
Cantabria	-	-	-	-	-	-	-
Castilla y León	1,209	1,184	24	5,906	5,842	64	4.89
Castilla - La Mancha	1,095	1,095	0	9,959	9,959	0	9.10
Cataluña	6,114	5,202	912	28,514	22,383	6,131	4.66
Comunitat Valenciana	1,617	689	928	3,368	1,516	1,852	2.08
Extremadura	178	178	0	2,188	2,188	0	12.30
Galicia	588	561	27	2,912	2,818	94	4.95
Madrid, Comunidad de	-	-	-	-	-	-	-
Murcia, Región de	1,449	1,177	273	4,111	3,171	940	2.84
Navarra, Comunidad Foral de	837	696	141	3,756	3,569	186	4.49
País Vasco	3,504	2,695	809	8,437	6,794	1,643	2.41
Rioja, La	179	179	0	1,067	1,067	0	5.95
Ceuta	-	-	-	-	-	-	-
Melilla	-	-	-	-	-	-	-
Annual rate	-79.11	-73.00	-90.13	-79.85	-77.87	-86.30	-3.54
Cumulative annual rate	-76.49	-75.81	-77.97	-73.72	-74.53	-71.80	11.77

2. Open establishments, capacity, occupancy and number of staff by autonomous cities and communities

Autonomous cities and communities	Capacity		Occupancy rate		Employed personnel
	Estimated open establishments	Estimated bed-places	Of bed-places	Of bed-places at weekend	
TOTAL	164	18,119	18.01	17.71	1,436
Andalucía	9	1,886	24.28	23.86	200
Aragón	15	1,737	12.19	11.79	66
Asturias, Principado de	-	-	-	-	-
Balears, Illes	-	-	-	-	-
Canarias	14	397	35.00	22.50	35
Cantabria	-	-	-	-	-
Castilla y León	17	1,713	11.12	12.68	163
Castilla - La Mancha	11	1,769	18.16	16.01	68
Cataluña	37	4,470	20.58	20.81	399
Comunitat Valenciana	5	582	18.67	25.50	34
Extremadura	4	253	27.86	26.02	22
Galicia	3	351	26.73	23.87	107
Madrid, Comunidad de	-	-	-	-	-
Murcia, Región de	5	489	27.12	33.44	43
Navarra, Comunidad Foral de	9	669	18.10	10.46	74
País Vasco	16	2,376	11.46	9.22	113
Rioja, La	7	439	7.83	9.73	15
Ceuta	-	-	-	-	-
Melilla	-	-	-	-	-
Annual rate	-42.68	-41.05	-65.81	-64.68	-42.45
Cumulative annual rate	-57.15	-56.19	-39.77	-35.62	-50.40

3. Travellers and overnight stays by countries of residence

Countries	Travellers		Overnight stays		Average stay
	Total	%	Total	%	
TOTAL	25,156	100.00	101,153	100.00	4.02
Residents in Spain	20,916	83.15	84,993	84.02	4.06
Residents abroad	4,239	16.85	16,159	15.98	3.81
TOTAL residents abroad	4,239	100.00	16,159	100.00	3.81
TOTAL Residents in EU-27 ¹ (without Spain)	2,455	57.90	5,486	33.95	2.23
- Germany	484	11.42	1,222	7.56	2.52
- Belgium	118	2.77	263	1.63	2.23
- France	755	17.82	1,677	10.38	2.22
- Italy	400	9.45	999	6.18	2.49
- Netherlands	222	5.24	476	2.95	2.15
- Portugal	30	0.71	55	0.34	1.83
United Kingdom	383	9.05	1,001	6.19	2.61
Switzerland	82	1.92	307	1.90	3.76
Other European countries	674	15.91	2,475	15.32	3.67
United States of America	53	1.25	114	0.70	2.15
Other countries	1,037	24.47	7,571	46.85	7.30

¹ Since 31 January 2020, The United Kingdom is no longer part of the E.U., hence the aggregate UE-27 is published.

HOLIDAY DWELLING PRICE INDEX (HDPI)

July 2020

Provisional data

31st August 2020

National general index and breakdown by rates

	Index	Annual variation rate
TOTAL	152.98	-7.84
Normal	138.97	-9.10
Weekend	116.91	-8.95
Tour-operators and travel agencies	172.83	-6.25

National general index and breakdown by modalities

	Index	Annual variation rate
TOTAL	152.98	-7.84
Studio	157.45	-9.16
Dwellings 2/4 bedplaces	155.48	-7.96
Dwellings 4/6 bedplaces	146.80	-7.20

Tourist Campsite Price Index (TCSPI). 2002 Base

July 2020

Provisional data

31st August 2020

National general index and breakdown by rates

	Index	Annual variation rate
TOTAL	168.66	-0.29
Normal rate	171.52	0.56
Special rate for stays up to one month	94.87	-2.11
Special rate for stays longer than one month	178.03	4.83
Bungalow rate ¹	112.42	-1.88

¹2014 Base

National general index and breakdown by categories

	Index	Annual variation rate
TOTAL	168.66	-0.29
Luxury and first	174.62	-0.48
Second	162.56	-0.34
Third	179.37	2.98

TCSPI (ANNEX OF TABLES) - July 2020. Provisional data

Rural Tourism Accommodation Price Index (RTAPI)

July

Provisional data

31st August 2020

General Autonomous Cities and Communities and national indices

	Index	Annual variation rate
TOTAL	146.91	-1.43
Andalucía	132.73	-3.98
Aragón	174.06	1.87
Asturias, Principado de	143.59	1.63
Balears, Illes	143.88	-5.60
Canarias	116.62	-1.67
Cantabria	156.71	2.90
Castilla y León	140.65	-0.56
Castilla - La Mancha	133.65	-2.56
Cataluña	160.17	-0.39
Comunitat Valenciana	147.68	-1.18
Extremadura	99.27	-2.54
Galicia	128.23	-2.23
Madrid, Comunidad de	143.09	-1.77
Murcia, Región de	158.31	1.37
Navarra, Comunidad Foral de	190.45	4.38
País Vasco	167.82	2.17
Rioja, La	158.08	2.84
Ceuta	-	-
Melilla	-	-

National general index and breakdown by rates

	Index	Annual variation rate
TOTAL	146.91	-1.43
Normal	149.42	-1.42
Weekend	144.93	-1.44

National general index and breakdown by rent modality

	Index	Annual variation rate
TOTAL	146.91	-1.43
Shared use (in case of per room rent modality)	137.16	-3.11
Full use (rent of entire dwelling)	152.08	-0.69