

29 August 2008

**Non-Hotel Tourist Accommodation Occupancy Surveys  
August 2008. Provisional data**

**Overnight stays in collective non-hotel accommodation decrease  
1.3% in August, as compared with the same month in 2007**

Overnight stays in non-hotel tourist accommodation (holiday dwellings, campsites and rural tourism establishments) exceeded 22.4 million in August, 1.3% less than in the same month of the previous year. The decrease in overnight stays of residents was recorded for both residents (with an interannual rate of -0.9%), and non-residents (-1.6%).

**The average stay is reduced 2.3%** as compared with August 2007, standing at 6.5 nights per traveller.

**In the period comprised of July and August**, overnight stays decreased 0.9% in the interannual rate. Overnight stays by resident travellers decreased 2.9%, while those by non-residents increased 1.1%.

**During the first eight months of the year**, 80.9 million overnight stays were registered, 1.0% less than the same period the previous year.

Travellers and overnight stays in collective non-hotel tourist accommodation during the month of August were:

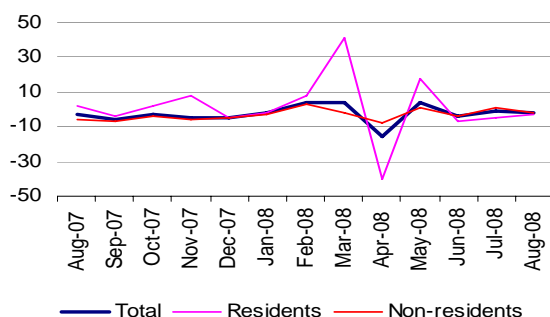
| August 2008              | Travellers       | Overnight stays   |
|--------------------------|------------------|-------------------|
| Residents in Spain       | 2,062,401        | 11,813,508        |
| EU (not including Spain) | 1,315,509        | 10,185,518        |
| Rest of the world        | 64,488           | 418,513           |
| <b>TOTAL</b>             | <b>3,442,398</b> | <b>22,417,539</b> |

**Overnight stays in holiday dwellings decrease 2.1% in August**

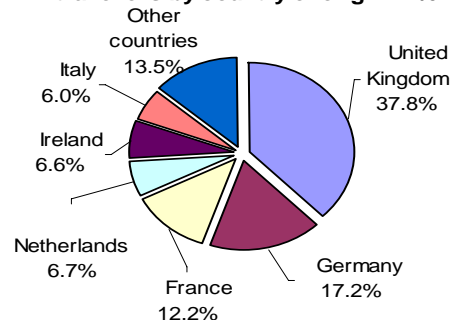
Overnight stays in holiday dwellings exceeded 11 million in August, representing a 2.1% decrease as compared with the same month last year. The decrease in overnight stays was recorded for both residents, whose interannual rate stood at -3.1%, and non-residents, who presented a variation of -1.5%.

Available holiday dwellings increased 0.2%, exceeding 559,240 bedplaces. This month, 62.3% of the total available bedplaces were occupied, 2.7% less than in August 2007. In turn, of the total available holiday dwellings, 74.1% were occupied, for an interannual decrease of 3.1%.

**Interannual rates of overnight stays in %  
on holiday dwellings**



**Overnight stays on holiday dwellings of foreign  
travellers by country of origin in %**



Non-resident overnight stays in holiday dwellings represented 62.8% of the total. **The United Kingdom was the main country of origin**, with more than 2.6 million overnight stays, 6.0% less than in August of last year.

The following market was Germany, with nearly 1.2 million overnight stays and an interannual rate of -1.1%.

**Canarias was the preferred holiday dwelling destination**, with more than 3.7 million overnight stays, 2.5% less than in August 2007. Illes Balears was the second destination of choice, with more than 2.3 million overnight stays, 0.8% less.

Among non-residents, Canarias, Illes Balears and Cataluña were the main destinations of choice. On the other hand, the destinations with the most overnight stays of resident travellers were Canarias, Comunitat Valenciana and Cataluña.

**Illes Balears presented the highest occupancy rate**, with 80% of available holiday dwellings occupied. It was followed by Cantabria (74.4%) and Comunitat Valenciana (74.1%).

By **tourist area**, the island of Mallorca was the preferred destination in this accommodation modality, with more than 1.3 million overnight stays in August. The island of Lanzarote presented the highest occupancy rate, with 82.6% of available dwellings occupied.

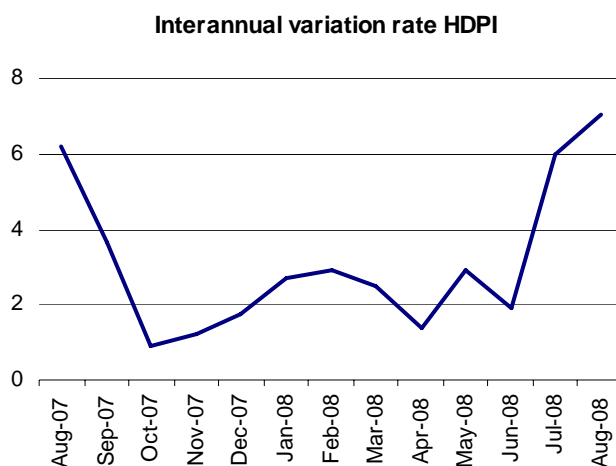
San Bartolomé de Tirajana, Tías and Arona were the tourist sites registering the highest number of overnight stays.

## Prices for holiday dwellings increase 7.1% in August

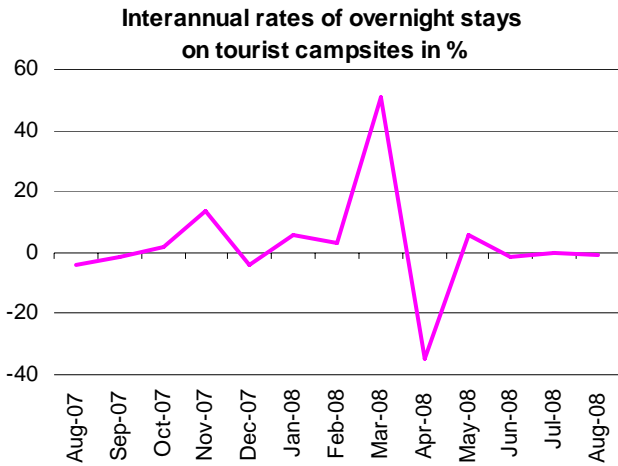
The Holiday Dwelling Price Index registered a 7.1% increase in August, a rate one point higher than that recorded the previous month.

The normal rate, which carried the greatest weight in the weighting structure for this month (49%), registered a 5.5% interannual rate increase.

By modality, 2/4 bedplace holiday dwellings, whose weighting was 59%, increased their prices 7.7% as compared with August 2007.



**Overnight stays on tourist campsites decrease 0.9%**



Overnight stays on tourist campsites exceeded the figure of 9.6 million in August, representing an interannual decrease of 0.9%. Overnight stays by resident travellers increased 0.3%, while those by non-residents decreased 3.0%.

Tourist campsites offered 759 thousand bedplaces, 1.6% more than in the same month of 2007. 54.6% of the available lots were occupied, for a 0.4% increase in the interannual rate. The weekend occupancy rate reached 55.8%, that is, 4.4% less than in August 2007.

35.2% of overnight stays on tourist campsites were by non-residents. **France was the main country of origin**, with 35.0% of overnight stays by non-residents (8.2% more). The following country of origin was the Netherlands.

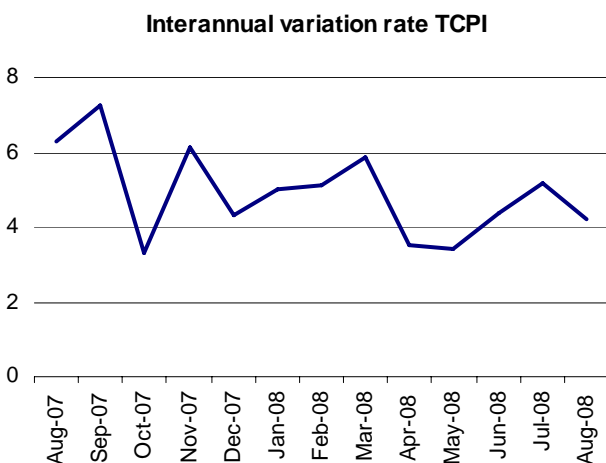
**Cataluña** was the preferred destination for camping, with more than 4.7 million overnight stays, 1.0% less than in August 2007. Comunitat Valenciana was the second destination of choice, with more than one million overnight stays, indicating an increase of 1.0%.

Among non-residents, the preferred destinations were Cataluña, Comunitat Valenciana and Andalucía. On the other hand, the destinations with the most overnight stays by resident travellers were Cataluña, Andalucía and Comunitat Valenciana.

**La Rioja** reached the highest occupancy rate on campsites in August, with 77.4% of the available lots occupied. It was followed by Comunitat Valenciana (69.0%) and País Vasco (67.7%).

By **tourist area**, Costa Brava was the preferred destination for camping, with more than 2.4 million overnight stays in August. Costa del Garraf recorded the highest occupancy rate by lot (79.1%). The **tourist sites** with the most overnight stays were Calonge, Torroella de Montgrí and Salou.

**Prices of tourist campsites increase 4.2%**



The Tourist Campsite Price Index experienced an interannual growth of 4.2% in August. The *normal* rate, which had the greatest weight in the weighting structure for this month (88.7%), increased 4.5%.

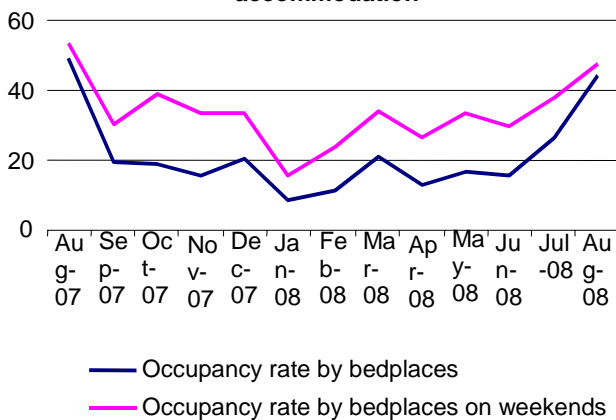
Regarding category, second class, with a weighting of 49.7% in August, recorded an interannual increase of 6.2%.

**Overnight stays by residents in rural tourism accommodation decrease 0.8% in August as compared with the same month of the previous year**

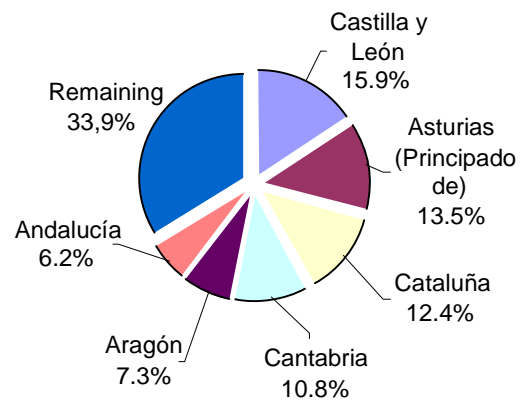
Overnight stays in rural tourism accommodation surpassed 1.7 million in August, with an interannual increase of 1.4%. Overnight stays by residents decreased 0.8%, whereas non-resident stays increased 15.6%.

Rural tourism accommodation provided 120,517 bedplaces, 11.1% more than in August 2007. 44.8% of these bedplaces were occupied, representing an 8.6% decrease. The weekend occupancy rate stood at 47.7%, that is, 11.8% less.

**Evolution of occupancy rates by bedplaces and by bedplaces on weekends on rural tourism accommodation**



**Distribution on rural tourism accommodation of overnight stays of Spanish travellers in %**



**Castilla y León was the preferred destination in rural tourism accommodation**, with 249,502 overnight stays, 4.2% less than in August 2007. Cataluña was the second destination of choice, with 230,328 overnight stays, 11.3% more.

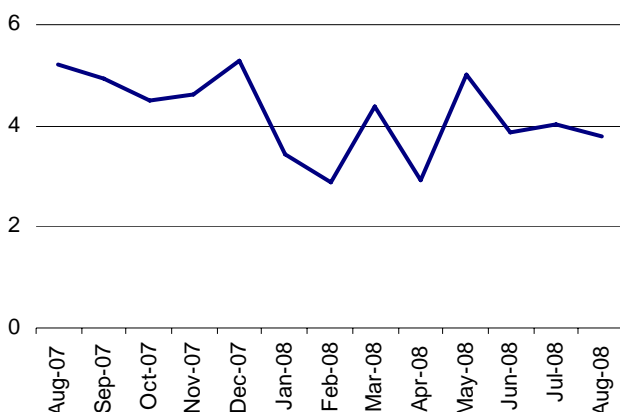
**Among non-residents, Illes Balears was the preferred destination.** On the other hand, the destinations with the most overnight stays by resident travellers were Castilla y León, Principado de Asturias and Cataluña.

In August, Illes Balears reached the highest occupancy rate in rural tourism accommodation, with 72.6% of the available bedplaces occupied. It was followed by Cantabria (68.0%) and País Vasco (66.8%).

By **tourist area**, Pirineo Catalán was the preferred destination, with 109,380 overnight stays. Costa Guipuzcoana reached the highest occupancy rate, 87.6%.

**Rural tourism accommodation prices increase 3.8%**

**Interannual variation rate RTAPI**



The Rural Tourism Accommodation Price Index registered an interannual growth of 3.8% in August. The normal rate, which carried the greatest weight in the weighting structure this month (83.8%), rose 3.7%.

By rent modality, complete use, with a weighting of 67.7%, recorded an interannual increase of 3.7%.

## Annex

### Evolution of travellers and overnight stays in all Spanish collective tourist accommodation

**Overnight stays in all Spanish collective tourist accommodation** (hotels, holiday dwellings, campsites and rural tourism accommodation) **registered a 0.8% interannual decrease in August**. Resident overnight stays decreased 1.9%, while non-resident overnight stays increased 0.2%.

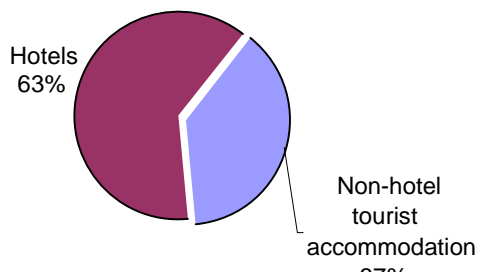
**The average stay dropped 0.6%** and stood at 4.5 nights per traveller.

Travellers and overnight stays in collective tourist accommodation were:

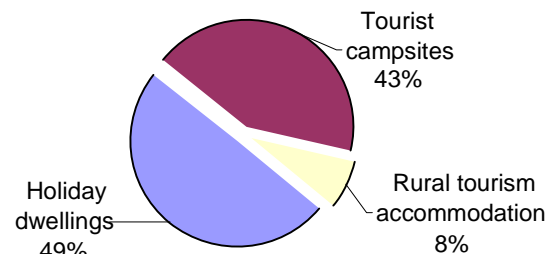
| August 2008            | Hotels     | Holiday dwellings | Campsites | Rural T.  | Total      |
|------------------------|------------|-------------------|-----------|-----------|------------|
| <b>Travellers</b>      | 9,954,128  | 1,238,230         | 1,843,953 | 360,215   | 13,396,526 |
| Residents              | 5,578,487  | 524,460           | 1,219,000 | 318,941   | 7,640,888  |
| Non-residents          | 4,375,641  | 713,770           | 624,953   | 41,274    | 5,755,638  |
| <b>Overnight stays</b> | 37,922,603 | 11,066,679        | 9,644,460 | 1,706,400 | 60,340,142 |
| Residents              | 16,813,251 | 4,112,709         | 6,249,715 | 1,451,084 | 28,626,759 |
| Non-residents          | 21,109,352 | 6,953,970         | 3,394,745 | 255,316   | 31,713,383 |

Of the total overnight stays in collective tourist accommodation in the month of August, 63% were accounted for at hotels and 37% were at non-hotel tourist accommodation.

**Distribution of overnight stays in tourist accommodation in %**



**Distribution of overnight stays of non-hotel tourist accommodation by modality in %**



The **main countries of origin** in overall regulated tourist accommodation were the United Kingdom, with 25.6% of the total number of non-resident overnight stays, Germany, with 22.0% and France, with 12.6%.

**Cataluña** was the **preferred destination** regarding overall tourist accommodation, with nearly 13.5 million overnight stays, 0.3% more than in August 2007. It was followed by Illes Balears, with 12 million overnight stays (0.3% less) and Canarias, with 9.1 million overnight stays (0.4% less).

The preferred destinations of non-residents were Illes Balears, Cataluña and Canarias. On the other hand, Cataluña, Andalucía and Comunitat Valenciana were the destinations with the most overnight stays by residents.

For further information see [INEbase-www.ine.es/en/welcome\\_en.htm](http://INEbase-www.ine.es/en/welcome_en.htm) All press releases at: [www.ine.es/en/prensa/prensa\\_en.htm](http://www.ine.es/en/prensa/prensa_en.htm)

**Press office:** Telephone: 91 583 93 63 / 94 08 – Fax: 91 583 90 87 - [gprensa@ine.es](mailto:gprensa@ine.es)

**Information area:** Telephone: 91 583 91 00 – Fax: 91 583 91 58 – [www.ine.es/infoine](http://www.ine.es/infoine)

## Tourist Accommodation Occupancy Survey Campsite Occupancy Survey (COS)

August 2008

Provisional data

### 1. Travellers, overnight stays and average stay by category of establishment

| Category                    | Number of travellers |           |           | Number of overnight stays |           |           | Average stay |
|-----------------------------|----------------------|-----------|-----------|---------------------------|-----------|-----------|--------------|
|                             | Total                | Residents | Residents | Total                     | Residents | Residents |              |
|                             |                      | in Spain  | abroad    |                           | in Spain  | abroad    |              |
| TOTAL                       | 1,843,953            | 1,219,000 | 624,953   | 9,644,460                 | 6,249,715 | 3,394,745 | 5.23         |
| Luxury and first-class      | 794,131              | 505,724   | 288,407   | 4,471,703                 | 2,645,763 | 1,825,940 | 5.63         |
| Second-class                | 903,846              | 604,742   | 299,104   | 4,501,581                 | 3,065,529 | 1,436,052 | 4.98         |
| Third-class                 | 145,977              | 108,534   | 37,442    | 671,176                   | 538,423   | 132,753   | 4.60         |
| Interannual rate            | 1.06                 | 2.72      | -2.02     | -0.91                     | 0.25      | -2.95     | -1.95        |
| Cumulative interannual rate | -2.18                | -2.56     | -1.42     | -0.52                     | -2.65     | 2.15      | 1.70         |

### 2. Open establishments, capacity, occupancy and number of staff by category of establishments

| Category                    | Estimated open establishments | Capacity            |                   | Occupied pitches | Occupancy rate per pitch | Weekend occupancy rate | Employed personnel |
|-----------------------------|-------------------------------|---------------------|-------------------|------------------|--------------------------|------------------------|--------------------|
|                             |                               | Estimated bedplaces | Estimated pitches |                  |                          |                        |                    |
| TOTAL                       | 1,174                         | 758,992             | 226,971           | 3,838,202        | 54.55                    | 55.80                  | 11,499             |
| Luxury and first-class      | 289                           | 323,708             | 93,091            | 1,651,340        | 57.22                    | 56.92                  | 5,519              |
| Second-class                | 654                           | 368,177             | 112,943           | 1,870,100        | 53.41                    | 55.96                  | 5,087              |
| Third-class                 | 231                           | 67,107              | 20,938            | 316,763          | 48.80                    | 49.96                  | 894                |
| Interannual rate            | 1.89                          | 1.63                | 1.05              | 1.46             | 0.40                     | -4.39                  | -1.52              |
| Cumulative interannual rate | 2.05                          | 1.05                | 0.75              | 2.04             | 1.00                     | -2.52                  | -0.09              |

### 3. Travellers, overnight stays and average stay by autonomous communities

| Autonomous Communities | Number of travellers |           |           | Number of overnight stays |           |           | Average stay |
|------------------------|----------------------|-----------|-----------|---------------------------|-----------|-----------|--------------|
|                        | Total                | Residents | Residents | Total                     | Residents | Residents |              |
|                        |                      | in Spain  | abroad    |                           | in Spain  | abroad    |              |
| TOTAL                  | 1,843,953            | 1,219,000 | 624,953   | 9,644,460                 | 6,249,715 | 3,394,745 | 5.23         |
| Andalucía              | 260,111              | 195,834   | 64,277    | 1,002,378                 | 794,775   | 207,603   | 3.85         |
| Aragón                 | 102,779              | 73,309    | 29,470    | 384,649                   | 296,307   | 88,342    | 3.74         |
| Asturias (P. de)       | 70,541               | 56,650    | 13,890    | 341,590                   | 301,917   | 39,673    | 4.84         |
| Balears (Illes)        | 10,352               | 6,780     | 3,572     | 65,445                    | 39,651    | 25,794    | 6.32         |
| Canarias               | 4,696                | 4,344     | 352       | 20,354                    | 16,088    | 4,266     | 4.33         |
| Cantabria              | 79,502               | 58,360    | 21,143    | 397,314                   | 323,013   | 74,301    | 5.00         |
| Castilla y León        | 108,597              | 78,088    | 30,509    | 303,292                   | 260,800   | 42,492    | 2.79         |
| Castilla-La Mancha     | 32,129               | 26,591    | 5,538     | 102,229                   | 91,547    | 10,682    | 3.18         |
| Cataluña               | 703,143              | 375,862   | 327,281   | 4,711,776                 | 2,318,976 | 2,392,799 | 6.70         |
| Comunitat Valenciana   | 155,203              | 111,752   | 43,451    | 1,058,171                 | 767,274   | 290,896   | 6.82         |
| Extremadura            | 33,854               | 31,276    | 2,578     | 101,327                   | 95,974    | 5,353     | 2.99         |
| Galicia                | 108,368              | 82,354    | 26,014    | 411,677                   | 349,098   | 62,579    | 3.80         |
| Madrid (C. de)         | 34,599               | 27,498    | 7,101     | 147,652                   | 130,725   | 16,927    | 4.27         |
| Murcia (Región de)     | 29,382               | 24,676    | 4,706     | 175,790                   | 147,791   | 27,999    | 5.98         |
| Navarra (C. Foral de)  | 29,449               | 21,272    | 8,178     | 123,146                   | 108,348   | 14,798    | 4.18         |
| País Vasco             | 55,535               | 23,180    | 32,356    | 171,239                   | 88,813    | 82,426    | 3.08         |
| Rioja (La)             | 25,711               | 21,173    | 4,539     | 126,432                   | 118,619   | 7,814     | 4.92         |
| Ceuta y Melilla        | -                    | -         | -         | -                         | -         | -         | -            |

#### 4. Open establishments, capacity, occupancy and number of staff by autonomous community

| Autonomous Communities | Estimated open establishments | Capacity            |                   | Occupied pitches | Occupancy rate per pitch | Weekend occupancy rate | Employed personnel |
|------------------------|-------------------------------|---------------------|-------------------|------------------|--------------------------|------------------------|--------------------|
|                        |                               | Estimated bedplaces | Estimated pitches |                  |                          |                        |                    |
| TOTAL                  | 1,174                         | 758,992             | 226,971           | 3,838,202        | 54.55                    | 55.80                  | 11,499             |
| Andalucía              | 146                           | 83,619              | 27,086            | 375,610          | 44.73                    | 47.44                  | 1,411              |
| Aragón                 | 91                            | 30,530              | 9,608             | 154,569          | 51.90                    | 49.08                  | 606                |
| Asturias (P. de)       | 54                            | 26,341              | 7,881             | 117,636          | 48.15                    | 53.47                  | 379                |
| Balears (Illes)        | 8                             | 3,237               | 1,291             | 23,101           | 57.72                    | 51.09                  | 103                |
| Canarias               | 9                             | 5,346               | 1,374             | 10,439           | 24.50                    | 27.40                  | 38                 |
| Cantabria              | 46                            | 33,528              | 10,413            | 185,814          | 57.56                    | 55.36                  | 369                |
| Castilla y León        | 110                           | 42,529              | 12,016            | 136,217          | 36.57                    | 35.68                  | 534                |
| Castilla-La Mancha     | 31                            | 12,072              | 3,397             | 44,338           | 42.10                    | 63.12                  | 124                |
| Cataluña               | 340                           | 342,706             | 98,823            | 1,805,760        | 58.94                    | 61.04                  | 5,109              |
| Comunitat Valenciana   | 112                           | 68,598              | 20,888            | 447,083          | 69.04                    | 66.52                  | 1,105              |
| Extremadura            | 27                            | 10,035              | 3,156             | 44,889           | 45.89                    | 50.19                  | 206                |
| Galicia                | 110                           | 38,891              | 12,413            | 146,316          | 38.02                    | 39.87                  | 624                |
| Madrid (C. de)         | 19                            | 16,922              | 5,562             | 93,931           | 54.47                    | 55.72                  | 215                |
| Murcia (Región de)     | 19                            | 15,175              | 4,480             | 75,176           | 54.13                    | 45.11                  | 238                |
| Navarra (C. Foral de)  | 21                            | 11,549              | 3,213             | 58,145           | 58.38                    | 53.31                  | 192                |
| País Vasco             | 23                            | 11,347              | 3,198             | 67,111           | 67.69                    | 74.88                  | 170                |
| Rioja (La)             | 9                             | 6,566               | 2,170             | 52,067           | 77.38                    | 77.44                  | 77                 |
| Ceuta y Melilla        | -                             | -                   | -                 | -                | -                        | -                      | -                  |

#### 5. Travellers and overnight stays, average stay, capacity, occupancy and number of staff by provinces with the greatest number of overnight stays\*

| Provinces          | Travellers         |                  | Overnight stays    |                  | Average stay | Estimated open establishments | Estimated pitches | Occupancy rate per pitch | Employed personnel |
|--------------------|--------------------|------------------|--------------------|------------------|--------------|-------------------------------|-------------------|--------------------------|--------------------|
|                    | Residents in Spain | Residents abroad | Residents in Spain | Residents abroad |              |                               |                   |                          |                    |
|                    | Girona             | 142,002          | 194,507            | 985,366          |              |                               |                   |                          |                    |
| Tarragona          | 110,733            | 56,539           | 709,153            | 458,332          | 6.98         | 65                            | 26,655            | 57.01                    | 1,305              |
| Barcelona          | 84,621             | 65,908           | 430,877            | 309,536          | 4.92         | 70                            | 15,363            | 73.66                    | 571                |
| Castellón/Castelló | 38,162             | 12,256           | 319,853            | 66,353           | 7.66         | 43                            | 7,056             | 70.42                    | 358                |
| Alicante/Alacant   | 32,389             | 15,043           | 175,612            | 171,988          | 7.33         | 34                            | 7,827             | 69.18                    | 375                |
| Cádiz              | 65,656             | 20,082           | 261,714            | 68,488           | 3.85         | 34                            | 6,855             | 54.48                    | 386                |
| Valencia/València  | 41,200             | 16,151           | 271,809            | 52,556           | 5.66         | 35                            | 6,005             | 67.25                    | 372                |
| Huesca             | 48,474             | 24,217           | 220,615            | 76,602           | 4.09         | 62                            | 7,232             | 55.13                    | 436                |
| Pontevedra         | 51,336             | 15,272           | 189,694            | 37,342           | 3.41         | 45                            | 5,949             | 41.10                    | 308                |
| Lleida             | 38,506             | 10,328           | 193,580            | 25,284           | 4.48         | 60                            | 7,892             | 46.45                    | 219                |
| Huelva             | 46,116             | 5,031            | 196,740            | 16,781           | 4.17         | 11                            | 5,875             | 31.78                    | 294                |
| Málaga             | 26,215             | 12,743           | 117,430            | 50,178           | 4.30         | 28                            | 4,382             | 58.87                    | 221                |
| A Coruña           | 23,489             | 8,372            | 132,134            | 21,224           | 4.81         | 48                            | 4,990             | 35.91                    | 252                |
| Guipúzcoa          | 14,211             | 22,145           | 48,620             | 57,243           | 2.91         | 14                            | 2,121             | 58.84                    | 110                |
| Almería            | 20,563             | 5,671            | 85,596             | 19,861           | 4.02         | 19                            | 2,624             | 51.99                    | 136                |

\* Provinces belonging to uniprovincial Autonomous Communities have not been included because they are reflected in previous tables.

## 6. Travellers, overnight stays, average stay, open establishments, capacity, occupancy and number of staff from tourist areas with the greatest number of overnight stays

| Tourist areas               | Number of travellers |                  | Number of overnight stays |                  | Average stay | Estimated open establishments | Estimated pitches | Occupancy rate per pitch | Employed personnel |
|-----------------------------|----------------------|------------------|---------------------------|------------------|--------------|-------------------------------|-------------------|--------------------------|--------------------|
|                             | Residents in Spain   | Residents abroad | Residents in Spain        | Residents abroad |              |                               |                   |                          |                    |
|                             | Costa Brava          | 117,893          | 190,554                   | 866,784          |              |                               |                   |                          |                    |
| Costa Daurada               | 110,733              | 56,539           | 709,153                   | 458,332          | 6.98         | 65                            | 26,655            | 57.01                    | 1,305              |
| P.N. Aiguamolls de l'Empord | 21,082               | 49,938           | 148,442                   | 487,523          | 8.95         | 22                            | 10,592            | 61.56                    | 825                |
| Pirineo Catalán             | 71,075               | 15,098           | 380,424                   | 38,182           | 4.86         | 106                           | 13,224            | 54.15                    | 437                |
| Costa del Maresme           | 33,652               | 17,149           | 246,207                   | 127,777          | 7.36         | 31                            | 7,530             | 71.78                    | 241                |
| Costa Blanca (Alicante)     | 31,960               | 14,837           | 173,052                   | 169,043          | 7.31         | 30                            | 7,425             | 69.08                    | 359                |
| Costa de la Luz (Cádiz)     | 59,561               | 19,046           | 247,819                   | 65,821           | 3.99         | 25                            | 6,121             | 56.33                    | 329                |
| Costa Verde                 | 48,070               | 12,111           | 272,538                   | 32,182           | 5.06         | 45                            | 6,789             | 48.44                    | 344                |
| Pirineo Aragonés            | 47,876               | 23,186           | 218,966                   | 74,157           | 4.12         | 61                            | 7,161             | 55.58                    | 437                |
| Costa Azahar                | 27,568               | 10,963           | 231,736                   | 59,342           | 7.55         | 31                            | 5,400             | 71.66                    | 286                |
| Rías Baixas                 | 60,060               | 17,040           | 229,164                   | 43,075           | 3.53         | 53                            | 7,172             | 39.96                    | 399                |
| Costa del Garraf            | 28,626               | 42,783           | 59,012                    | 166,051          | 3.15         | 8                             | 4,304             | 79.05                    | 174                |
| Costa de la Luz (Huelva)    | 45,048               | 4,476            | 195,075                   | 15,536           | 4.25         | 9                             | 5,741             | 30.76                    | 287                |
| Costa Valencia              | 17,963               | 6,873            | 136,168                   | 37,282           | 6.98         | 11                            | 2,251             | 76.36                    | 176                |
| Costa del Sol               | 21,118               | 10,891           | 103,702                   | 45,847           | 4.67         | 14                            | 3,549             | 65.75                    | 162                |

## 7. Travellers, overnight stays, average stay, open establishments, capacity, occupancy and number of staff from tourist sites with the greatest number at overnights stays

| Tourist sites        | Number of guests   |                  | Number of overnight stays |                  | Average stay | Estimated open establishments | Estimated pitches | Occupancy rate per pitch | Employed personnel |
|----------------------|--------------------|------------------|---------------------------|------------------|--------------|-------------------------------|-------------------|--------------------------|--------------------|
|                      | Residents in Spain | Residents abroad | Residents in Spain        | Residents abroad |              |                               |                   |                          |                    |
|                      | Calonge            | 15,790           | 17,951                    | 133,241          |              |                               |                   |                          |                    |
| Torroella de Montgrí | 5,372              | 22,673           | 35,083                    | 278,796          | 11.19        | 9                             | 4,935             | 58.29                    | 419                |
| Salou                | 16,999             | 16,057           | 144,176                   | 151,842          | 8.95         | 4                             | 3,513             | 58.49                    | 143                |
| Sant Pere Pescador   | 7,229              | 14,010           | 52,803                    | 200,266          | 11.92        | 7                             | 3,957             | 56.46                    | 416                |
| Blanes               | 11,770             | 20,474           | 123,078                   | 127,044          | 7.76         | 12                            | 4,150             | 62.60                    | 245                |
| Castelló d'Empúries  | 6,312              | 20,881           | 54,932                    | 193,263          | 9.13         | 5                             | 3,474             | 66.45                    | 278                |
| Castell-Platja d'Aro | 11,953             | 11,008           | 78,384                    | 110,580          | 8.23         | 8                             | 4,687             | 50.74                    | 176                |
| Cambrils             | 17,426             | 6,546            | 103,781                   | 60,104           | 6.84         | 7                             | 3,259             | 70.71                    | 127                |
| Palafrugell          | 8,408              | 10,738           | 62,966                    | 100,271          | 8.53         | 6                             | 2,464             | 54.42                    | 186                |
| Benidorm             | 5,825              | 4,149            | 28,916                    | 112,003          | 14.13        | 10                            | 3,618             | 69.16                    | 132                |
| Mont-Roig del Camp   | 4,695              | 8,953            | 31,840                    | 102,949          | 9.88         | 5                             | 4,211             | 36.51                    | 273                |
| Tarragona            | 12,229             | 7,161            | 73,895                    | 55,283           | 6.66         | 7                             | 2,911             | 59.78                    | 216                |



## 8. Percentage distribution of Spanish travellers by Autonomous Community of origin

| Origin                | Total  | Andalucía | Aragón | Asturias (P. de) | Balears (Illes) | Canarias | Cantabria | Castilla y León | Castilla-La Mancha | Cataluña |
|-----------------------|--------|-----------|--------|------------------|-----------------|----------|-----------|-----------------|--------------------|----------|
| <b>TOTAL</b>          | 100.00 | 13.69     | 2.70   | 2.39             | 0.23            | 0.67     | 1.18      | 5.44            | 2.43               | 32.63    |
| Andalucía             | 100.00 | 67.03     | 0.70   | 0.34             | 0.10            | 0.35     | 0.30      | 1.43            | 1.56               | 5.92     |
| Aragón                | 100.00 | 7.57      | 17.85  | 1.14             | 0.62            | 0.45     | 1.09      | 1.95            | 1.21               | 26.81    |
| Asturias (P. de)      | 100.00 | 4.67      | 1.75   | 17.56            | 0.14            | 0.23     | 3.15      | 16.60           | 2.72               | 10.87    |
| Balears (Illes)       | 100.00 | 3.20      | 1.17   | 2.10             | 6.98            | 0.09     | 0.34      | 0.29            | 0.19               | 66.19    |
| Canarias              | 100.00 | -         | 0.27   | 0.32             | -               | 96.77    | -         | 0.21            | -                  | 1.35     |
| Cantabria             | 100.00 | 2.64      | 2.12   | 2.03             | 0.16            | 0.53     | 8.70      | 18.41           | 1.76               | 7.24     |
| Castilla y León       | 100.00 | 3.77      | 0.85   | 13.07            | 0.29            | 0.69     | 3.67      | 29.23           | 1.81               | 6.35     |
| Castilla-La Mancha    | 100.00 | 6.94      | 0.78   | 0.14             | 0.21            | 0.39     | 0.25      | 0.85            | 18.69              | 7.38     |
| Cataluña              | 100.00 | 1.88      | 2.43   | 0.19             | 0.13            | 0.18     | 0.12      | 1.21            | 0.80               | 83.31    |
| Comunitat Valenciana  | 100.00 | 3.83      | 3.07   | 0.59             | 0.25            | 0.27     | 0.49      | 3.39            | 5.44               | 9.81     |
| Extremadura           | 100.00 | 5.97      | 0.45   | 1.14             | 0.10            | 0.65     | 0.80      | 11.47           | 13.83              | 3.09     |
| Galicia               | 100.00 | 3.04      | 1.20   | 4.30             | 0.23            | 0.47     | 1.67      | 6.68            | 1.14               | 7.77     |
| Madrid (C. de)        | 100.00 | 2.34      | 0.30   | 0.22             | -               | 0.46     | 0.33      | 0.52            | 3.77               | 4.33     |
| Murcia (Región de)    | 100.00 | 9.68      | 0.26   | 0.54             | 0.12            | -        | 0.02      | 1.12            | 3.71               | 5.08     |
| Navarra (C. Foral de) | 100.00 | 2.06      | 1.67   | 0.73             | 0.38            | 0.53     | 0.27      | 1.00            | 0.32               | 15.64    |
| País Vasco            | 100.00 | 6.82      | 2.94   | 1.23             | 0.31            | 0.22     | 1.02      | 2.53            | 1.20               | 24.35    |
| Rioja (La)            | 100.00 | 0.59      | 1.59   | 0.83             | 0.12            | 0.06     | 0.62      | 1.01            | 0.43               | 8.41     |
| Ceuta y Melilla       | -      | -         | -      | -                | -               | -        | -         | -               | -                  | -        |

(conclusion)

| Origin                | Comunitat Valenciana | Extrema-dura | Galicia | Madrid (C. de) | Murcia (Región de) | Navarra (C. Foral de) | Pais Vasco | Rioja (La) | Ceuta y Melilla |
|-----------------------|----------------------|--------------|---------|----------------|--------------------|-----------------------|------------|------------|-----------------|
| <b>TOTAL</b>          | 8.58                 | 1.73         | 4.39    | 10.46          | 2.36               | 1.32                  | 9.03       | 0.70       | 0.08            |
| Andalucía             | 4.15                 | 3.49         | 0.73    | 7.12           | 2.10               | 0.46                  | 3.84       | 0.12       | 0.27            |
| Aragón                | 13.75                | 0.74         | 0.80    | 8.95           | 2.35               | 2.86                  | 11.05      | 0.78       | 0.01            |
| Asturias (P. de)      | 3.77                 | 0.76         | 4.00    | 17.13          | 1.12               | 1.34                  | 13.46      | 0.74       | -               |
| Balears (Illes)       | 8.16                 | 0.29         | 0.26    | 4.75           | 0.65               | 0.41                  | 4.77       | 0.16       | -               |
| Canarias              | -                    | -            | -       | 1.08           | -                  | -                     | -          | -          | -               |
| Cantabria             | 2.59                 | 0.95         | 2.10    | 9.12           | 0.42               | 2.71                  | 35.52      | 2.90       | 0.11            |
| Castilla y León       | 4.70                 | 0.76         | 2.21    | 20.82          | 1.31               | 1.73                  | 7.57       | 1.09       | 0.07            |
| Castilla-La Mancha    | 24.53                | 0.40         | 0.60    | 18.25          | 18.09              | 0.25                  | 2.10       | 0.09       | 0.06            |
| Cataluña              | 2.33                 | 0.08         | 0.29    | 2.33           | 0.27               | 0.29                  | 3.88       | 0.27       | -               |
| Comunitat Valenciana  | 45.23                | 0.36         | 1.14    | 18.23          | 2.74               | 0.66                  | 3.94       | 0.53       | 0.03            |
| Extremadura           | 1.83                 | 33.73        | 0.96    | 20.02          | 0.65               | 0.54                  | 4.37       | 0.34       | 0.06            |
| Galicia               | 2.82                 | 0.52         | 51.45   | 8.14           | 1.01               | 0.93                  | 8.11       | 0.43       | 0.10            |
| Madrid (C. de)        | 2.36                 | 0.29         | 1.27    | 80.97          | 0.98               | 0.20                  | 1.53       | 0.04       | 0.08            |
| Murcia (Región de)    | 24.10                | 0.42         | 0.40    | 10.40          | 41.56              | 0.35                  | 2.15       | 0.11       | -               |
| Navarra (C. Foral de) | 6.84                 | 0.08         | 0.78    | 4.49           | 1.16               | 17.79                 | 45.69      | 0.16       | 0.42            |
| País Vasco            | 4.80                 | 0.50         | 1.17    | 8.33           | 1.25               | 9.95                  | 31.89      | 1.25       | 0.24            |
| Rioja (La)            | 3.12                 | -            | 0.81    | 3.25           | 0.04               | 1.32                  | 67.09      | 10.71      | -               |
| Ceuta y Melilla       | -                    | -            | -       | -              | -                  | -                     | -          | -          | -               |

## 9. Percentage distribution of overnight stays of Spanish travellers by Autonomous Community of origin

| Destination \ Origin  | Total  | Andalucía | Aragón | Asturias (P. de) | Balears (Illes) | Canarias | Cantabria | Castilla y León | Castilla-La Mancha | Cataluña |
|-----------------------|--------|-----------|--------|------------------|-----------------|----------|-----------|-----------------|--------------------|----------|
| TOTAL                 | 100.00 | 10.89     | 2.70   | 3.22             | 0.17            | 0.41     | 0.96      | 3.68            | 1.81               | 36.62    |
| Andalucía             | 100.00 | 68.12     | 0.53   | 0.39             | 0.08            | 0.22     | 0.21      | 1.45            | 1.44               | 5.00     |
| Aragón                | 100.00 | 4.67      | 20.46  | 0.72             | 0.90            | 0.82     | 0.88      | 1.62            | 1.01               | 28.53    |
| Asturias (P. de)      | 100.00 | 3.22      | 1.57   | 38.32            | 0.03            | 0.09     | 1.87      | 10.55           | 1.84               | 8.61     |
| Balears (Illes)       | 100.00 | 2.61      | 0.94   | 2.76             | 7.23            | 0.12     | 0.12      | 0.47            | 0.25               | 62.39    |
| Canarias              | 100.00 | 0.26      | 0.12   | 0.07             | -               | 97.01    | -         | 0.06            | -                  | 2.02     |
| Cantabria             | 100.00 | 1.23      | 2.07   | 2.30             | 0.06            | 0.11     | 11.03     | 14.27           | 2.29               | 4.64     |
| Castilla y León       | 100.00 | 2.94      | 1.51   | 18.96            | 0.12            | 0.41     | 2.22      | 22.37           | 1.58               | 4.89     |
| Castilla-La Mancha    | 100.00 | 4.62      | 0.41   | 0.13             | 0.09            | 0.22     | 0.12      | 0.75            | 15.75              | 7.13     |
| Cataluña              | 100.00 | 2.02      | 2.41   | 0.15             | 0.08            | 0.06     | 0.11      | 0.78            | 0.48               | 84.73    |
| Comunitat Valenciana  | 100.00 | 2.40      | 3.11   | 0.50             | 0.10            | 0.06     | 0.21      | 3.02            | 4.31               | 7.32     |
| Extremadura           | 100.00 | 6.15      | 0.20   | 1.04             | 0.14            | 0.32     | 0.60      | 8.86            | 12.29              | 4.06     |
| Galicia               | 100.00 | 1.74      | 0.81   | 3.32             | 0.12            | 0.23     | 0.76      | 6.03            | 0.85               | 4.47     |
| Madrid (C. de)        | 100.00 | 1.13      | 0.07   | 0.21             | 0.01            | 0.16     | 0.22      | 0.22            | 1.64               | 2.40     |
| Murcia (Región de)    | 100.00 | 9.56      | 0.39   | 0.54             | 0.03            | 0.01     | 0.01      | 1.70            | 3.45               | 3.45     |
| Navarra (C. Foral de) | 100.00 | 0.71      | 1.38   | 0.55             | 0.17            | 0.43     | 0.20      | 1.12            | 0.08               | 9.36     |
| País Vasco            | 100.00 | 4.93      | 1.72   | 0.42             | 0.07            | 0.10     | 0.42      | 1.72            | 0.63               | 18.65    |
| Rioja (La)            | 100.00 | 0.27      | 0.76   | 0.21             | 0.02            | 0.03     | 0.20      | 0.27            | 0.13               | 3.33     |
| Ceuta y Melilla       | -      | -         | -      | -                | -               | -        | -         | -               | -                  | -        |

(conclusion)

| Destination \ Origin  | Comunitat Valenciana | Extremadura | Galicia | Madrid (C. de) | Murcia (Región de) | Navarra (C. Foral de) | País Vasco | Rioja (La) | Ceuta y Melilla |
|-----------------------|----------------------|-------------|---------|----------------|--------------------|-----------------------|------------|------------|-----------------|
| TOTAL                 | 10.02                | 1.15        | 4.21    | 9.69           | 2.27               | 1.09                  | 10.55      | 0.53       | 0.04            |
| Andalucía             | 3.56                 | 3.16        | 0.60    | 7.76           | 2.16               | 0.57                  | 4.46       | 0.10       | 0.16            |
| Aragón                | 15.68                | 0.37        | 1.15    | 7.66           | 2.05               | 2.34                  | 10.54      | 0.57       | 0.01            |
| Asturias (P. de)      | 3.04                 | 0.46        | 2.14    | 14.94          | 0.72               | 1.16                  | 10.66      | 0.77       | -               |
| Balears (Illes)       | 7.60                 | 0.08        | 0.66    | 6.70           | 0.59               | 0.55                  | 6.88       | 0.07       | -               |
| Canarias              | -                    | -           | -       | 0.46           | -                  | -                     | -          | -          | -               |
| Cantabria             | 1.65                 | 0.47        | 1.14    | 7.76           | 0.33               | 1.81                  | 46.48      | 2.30       | 0.04            |
| Castilla y León       | 5.23                 | 0.54        | 1.43    | 21.01          | 1.17               | 2.20                  | 11.78      | 1.60       | 0.06            |
| Castilla-La Mancha    | 28.89                | 0.17        | 0.48    | 17.33          | 22.05              | 0.25                  | 1.56       | 0.02       | 0.02            |
| Cataluña              | 1.76                 | 0.07        | 0.20    | 2.12           | 0.18               | 0.20                  | 4.38       | 0.26       | -               |
| Comunitat Valenciana  | 53.02                | 0.30        | 0.59    | 18.04          | 2.03               | 0.66                  | 3.92       | 0.39       | 0.03            |
| Extremadura           | 2.21                 | 36.23       | 0.81    | 19.76          | 0.64               | 0.37                  | 6.17       | 0.13       | 0.03            |
| Galicia               | 1.76                 | 0.42        | 65.14   | 6.67           | 0.55               | 0.93                  | 5.87       | 0.28       | 0.05            |
| Madrid (C. de)        | 2.44                 | 0.14        | 0.69    | 89.42          | 0.41               | 0.04                  | 0.78       | 0.01       | 0.01            |
| Murcia (Región de)    | 17.48                | 0.31        | 0.30    | 14.43          | 45.58              | 0.18                  | 2.49       | 0.08       | 0.02            |
| Navarra (C. Foral de) | 3.80                 | 0.04        | 0.63    | 2.59           | 0.94               | 18.37                 | 59.49      | 0.06       | 0.08            |
| País Vasco            | 3.55                 | 0.18        | 0.66    | 6.19           | 0.78               | 8.17                  | 50.99      | 0.71       | 0.09            |
| Rioja (La)            | 1.19                 | -           | 0.14    | 0.97           | 0.01               | 0.40                  | 87.01      | 5.07       | -               |
| Ceuta y Melilla       | -                    | -           | -       | -              | -                  | -                     | -          | -          | -               |

## 10. Travellers and overnight stays by countries of residence

| Countries                                 | Travellers |        | Overnight stays |        |
|---|------------|--------|-----------------|--------|
|   | Total      | %      | Total           | %      |
| TOTAL                                     | 1,843,953  | 100.00 | 9,644,460       | 100.00 |
| Residents in Spain                        | 1,219,000  | 66.11  | 6,249,715       | 64.80  |
| Residents abroad                          | 624,953    | 33.89  | 3,394,745       | 35.20  |
| TOTAL residents abroad                    | 624,953    | 100.00 | 3,394,745       | 100.00 |
| TOTAL residents in E.U. (excluding Spain) | 604,500    | 96.73  | 3,327,369       | 98.02  |
| - Germany                                 | 64,731     | 10.36  | 309,892         | 9.13   |
| - Austria                                 | 3,033      | 0.49   | 8,641           | 0.25   |
| - Belgium                                 | 22,769     | 3.64   | 152,887         | 4.50   |
| - Denmark                                 | 2,211      | 0.35   | 10,427          | 0.31   |
| - Finland                                 | 921        | 0.15   | 3,877           | 0.11   |
| - France                                  | 244,988    | 39.20  | 1,189,633       | 35.04  |
| - Greece                                  | 528        | 0.08   | 811             | 0.02   |
| - Ireland                                 | 15,186     | 2.43   | 162,498         | 4.79   |
| - Italy                                   | 67,582     | 10.81  | 199,709         | 5.88   |
| - Luxembourg                              | 5,209      | 0.83   | 25,720          | 0.76   |
| - Netherlands                             | 66,538     | 10.65  | 661,505         | 19.49  |
| - Poland                                  | 8,258      | 1.32   | 23,942          | 0.71   |
| - Portugal                                | 35,251     | 5.64   | 103,357         | 3.04   |
| - United Kingdom                          | 53,551     | 8.57   | 428,682         | 12.63  |
| - Czech Republic                          | 2,954      | 0.47   | 9,307           | 0.27   |
| - Sweden                                  | 1,223      | 0.20   | 5,212           | 0.15   |
| - Other EU countries                      | 9,565      | 1.53   | 31,268          | 0.92   |
| Other European countries                  | 9,150      | 1.46   | 32,915          | 0.97   |
| United States of America                  | 1,050      | 0.17   | 2,483           | 0.07   |
| Rest of America                           | 3,922      | 0.63   | 10,227          | 0.30   |
| African countries                         | 719        | 0.12   | 2,163           | 0.06   |
| Other countries                           | 5,612      | 0.90   | 19,589          | 0.58   |

## Tourist Accommodation Occupancy Survey

### (Holiday Dwellings)

August 2008

Provisional data

#### 1. Travellers, overnight stays and average stay by Autonomous Communities

| Autonomous Communities      | Number of travellers |                    |                  | Number of overnight stays |                    |                  | Average stay |
|-----------------------------|----------------------|--------------------|------------------|---------------------------|--------------------|------------------|--------------|
|                             | Total                | Residents in Spain | Residents abroad | Total                     | Residents in Spain | Residents abroad |              |
| <b>TOTAL</b>                | 1,238,230            | 524,460            | 713,770          | 11,066,679                | 4,112,709          | 6,953,970        | 8.94         |
| Andalucía                   | 127,680              | 76,305             | 51,375           | 958,024                   | 519,426            | 438,598          | 7.50         |
| Aragón                      | 9,299                | 8,812              | 488              | 48,549                    | 45,179             | 3,370            | 5.22         |
| Asturias (P. de)            | 7,905                | 7,530              | 376              | 51,946                    | 49,111             | 2,835            | 6.57         |
| Balears (Illes)             | 261,676              | 38,085             | 223,591          | 2,364,888                 | 291,930            | 2,072,958        | 9.04         |
| Canarias                    | 424,864              | 167,296            | 257,568          | 3,743,044                 | 1,097,193          | 2,645,851        | 8.81         |
| Cantabria                   | 14,156               | 12,785             | 1,371            | 90,026                    | 81,259             | 8,767            | 6.36         |
| Castilla y León             | 2,465                | 2,348              | 117              | 12,476                    | 11,548             | 928              | 5.06         |
| Castilla-La Mancha          | 5,621                | 5,547              | 74               | 19,951                    | 19,704             | 248              | 3.55         |
| Cataluña                    | 160,485              | 61,790             | 98,695           | 1,632,374                 | 638,997            | 993,377          | 10.17        |
| C. Valenciana               | 170,102              | 101,419            | 68,684           | 1,796,130                 | 1,072,729          | 723,400          | 10.56        |
| Extremadura                 | 2,559                | 2,470              | 89               | 13,208                    | 12,667             | 541              | 5.16         |
| Galicia                     | 9,127                | 7,910              | 1,217            | 59,193                    | 52,751             | 6,442            | 6.49         |
| Madrid (C. de)              | 21,294               | 13,572             | 7,722            | 83,564                    | 45,394             | 38,170           | 3.92         |
| Murcia (Región de)          | 13,929               | 12,800             | 1,129            | 159,717                   | 146,766            | 12,951           | 11.47        |
| Navarra (C. Foral de)       | 4,576                | 3,531              | 1,045            | 20,111                    | 16,762             | 3,349            | 4.39         |
| País Vasco                  | 1,565                | 1,347              | 218              | 8,592                     | 6,502              | 2,090            | 5.49         |
| Rioja (La)                  | 926                  | 914                | 12               | 4,887                     | 4,792              | 95               | 5.28         |
| Ceuta y Melilla             | -                    | -                  | -                | -                         | -                  | -                | -            |
| Interannual rate            | 1.70                 | -0.65              | 3.51             | -2.12                     | -3.10              | -1.54            | -3.76        |
| Cumulative interannual rate | -0.54                | -1.65              | 0.02             | -1.73                     | -3.29              | -1.21            | -1.20        |

#### 2. Capacity, occupancy and number of staff by autonomous communities

| Autonomous Communities      | Capacity            |                             | Occupancy rate |                       | Employed personnel |
|-----------------------------|---------------------|-----------------------------|----------------|-----------------------|--------------------|
|                             | Estimated bedplaces | Estimated Holiday dwellings | Per bedplaces  | Per Holiday dwellings |                    |
| <b>TOTAL</b>                | 559,242             | 156,219                     | 62.30          | 74.1                  | 33,992             |
| Andalucía                   | 48,578              | 12,920                      | 62.68          | 73.18                 | 4,631              |
| Aragón                      | 3,426               | 799                         | 45.56          | 56.90                 | 257                |
| Asturias (P. de)            | 3,175               | 885                         | 50.89          | 60.13                 | 289                |
| Balears (Illes)             | 99,382              | 33,754                      | 73.41          | 79.97                 | 7,676              |
| Canarias                    | 193,365             | 61,528                      | 60.46          | 73.54                 | 14,303             |
| Cantabria                   | 4,715               | 1,240                       | 60.18          | 74.43                 | 278                |
| Castilla y León             | 1,194               | 307                         | 33.59          | 49.73                 | 100                |
| Castilla-La Mancha          | 2,777               | 671                         | 22.99          | 29.43                 | 285                |
| Cataluña                    | 84,976              | 18,473                      | 61.47          | 73.71                 | 2,420              |
| C. Valenciana               | 96,650              | 19,407                      | 59.67          | 74.11                 | 2,314              |
| Extremadura                 | 923                 | 226                         | 44.56          | 61.39                 | 79                 |
| Galicia                     | 3,166               | 805                         | 59.63          | 72.01                 | 242                |
| Madrid (C. de)              | 6,084               | 2,640                       | 44.01          | 51.30                 | 635                |
| Murcia (Región de)          | 8,434               | 1,903                       | 60.54          | 71.54                 | 243                |
| Navarra (C. Foral de)       | 1,201               | 332                         | 52.91          | 60.40                 | 156                |
| País Vasco                  | 879                 | 262                         | 31.40          | 50.58                 | 47                 |
| Rioja (La)                  | 319                 | 66                          | 48.89          | 60.74                 | 38                 |
| Ceuta y Melilla             | -                   | -                           | -              | -                     | -                  |
| Interannual rate            | 0.16                | 1.56                        | -2.66          | -3.08                 | 0.89               |
| Cumulative interannual rate | -0.63               | -0.39                       | -1.65          | -2.48                 | -0.87              |

### 3. Travellers, overnight stays, capacity, occupancy, total number of staff with greater number of overnight stays \*

| Provinces            | Number of travellers |           | Overnight stays |           |         | Capacity  |                  | Occupancy rate |                  | Employed personnel |
|----------------------|----------------------|-----------|-----------------|-----------|---------|-----------|------------------|----------------|------------------|--------------------|
|                      | Residents            | Residents | Residents       | Residents | Average | Estimated | Estimated        | Per            | Per              |                    |
|                      | in Spain             | abroad    | in Spain        | abroad    | stay    | bedplaces | holiday dwelling | bedplaces      | holiday dwelling |                    |
| Las Palmas           | 113,238              | 164,943   | 766,661         | 1,857,959 | 9.43    | 135,199   | 42,767           | 60.29          | 74.61            | 9,441              |
| St. Cruz de Tenerife | 54,058               | 92,625    | 330,532         | 787,892   | 7.62    | 58,165    | 18,760           | 60.88          | 71.10            | 4,862              |
| Alicante/Alacant     | 46,850               | 51,731    | 440,054         | 536,276   | 9.90    | 55,775    | 11,548           | 56.35          | 72.68            | 1,483              |
| Girona               | 29,771               | 52,121    | 347,725         | 558,664   | 11.07   | 46,941    | 10,026           | 61.66          | 74.47            | 1,149              |
| Tarragona            | 25,469               | 36,547    | 237,806         | 369,388   | 9.79    | 29,971    | 6,261            | 64.96          | 77.04            | 901                |
| Málaga               | 26,661               | 43,745    | 211,009         | 391,004   | 8.55    | 27,329    | 7,313            | 69.68          | 79.60            | 3,242              |
| Castellón/Castelló   | 28,198               | 11,758    | 315,163         | 128,933   | 11.11   | 23,983    | 4,472            | 59.47          | 75.72            | 444                |
| Valencia/València    | 26,371               | 5,195     | 317,513         | 58,192    | 11.90   | 16,892    | 3,386            | 70.93          | 76.85            | 387                |
| Almería              | 20,183               | 2,448     | 132,314         | 26,701    | 7.03    | 8,039     | 1,919            | 63.71          | 86.32            | 430                |
| Barcelona            | 3,175                | 9,743     | 30,296          | 63,088    | 7.23    | 5,620     | 1,697            | 53.54          | 66.24            | 258                |
| Cádiz                | 6,783                | 1,568     | 51,229          | 7,402     | 7.02    | 3,209     | 871              | 58.20          | 59.44            | 288                |
| Granada              | 8,468                | 838       | 45,593          | 4,531     | 5.39    | 3,685     | 996              | 43.60          | 46.64            | 266                |
| Huelva               | 5,492                | 177       | 41,376          | 927       | 7.46    | 2,701     | 688              | 49.64          | 59.68            | 115                |
| Huesca               | 5,062                | 268       | 29,490          | 1,842     | 5.88    | 2,173     | 477              | 46.43          | 57.27            | 161                |
| Pontevedra           | 2,622                | 413       | 25,241          | 2,901     | 9.27    | 1,476     | 335              | 61.13          | 72.51            | 89                 |

### 4. Travellers, overnight stays, capacity, occupancy, total number of staff from tourist areas with greater number of overnight stays

| Tourist Areas             | Number of travellers |           | Overnight stays |           |         | Capacity  |                  | Occupancy rate |                  | Employed personnel |
|---------------------------|----------------------|-----------|-----------------|-----------|---------|-----------|------------------|----------------|------------------|--------------------|
|                           | Residents            | Residents | Residents       | Residents | Average | Estimated | Estimated        | Per            | Per              |                    |
|                           | in Spain             | abroad    | in Spain        | abroad    | stay    | bedplaces | holiday dwelling | bedplaces      | holiday dwelling |                    |
| Isla de Mallorca          | 7,254                | 145,920   | 52,252          | 1,314,022 | 8.92    | 56,398    | 19,917           | 74.72          | 80.14            | 4,242              |
| Isla de Gran Canaria      | 64,130               | 74,453    | 417,414         | 828,547   | 8.99    | 67,149    | 21,624           | 57.61          | 69.52            | 4,303              |
| Isla de Tenerife          | 41,491               | 88,534    | 245,940         | 754,047   | 7.69    | 50,659    | 16,212           | 62.53          | 72.80            | 4,216              |
| Isla de Lanzarote         | 32,244               | 65,939    | 219,705         | 707,950   | 9.45    | 44,837    | 13,717           | 63.74          | 82.58            | 3,692              |
| Costa Blanca              | 45,761               | 48,359    | 426,391         | 493,945   | 9.78    | 51,654    | 10,789           | 57.35          | 73.91            | 1,425              |
| Costa Brava               | 26,185               | 51,923    | 320,426         | 557,056   | 11.23   | 45,156    | 9,647            | 62.06          | 75.05            | 1,022              |
| Costa Daurada             | 25,469               | 36,547    | 237,806         | 369,388   | 9.79    | 29,971    | 6,261            | 64.96          | 77.04            | 901                |
| Costa del Sol             | 24,984               | 43,122    | 203,775         | 386,037   | 8.66    | 26,437    | 7,081            | 70.57          | 80.43            | 3,180              |
| Islas de Ibiza-Formentera | 16,290               | 50,276    | 112,538         | 457,039   | 8.56    | 24,527    | 8,102            | 71.80          | 79.47            | 1,773              |
| Isla de Fuerteventura     | 16,864               | 24,551    | 129,542         | 321,462   | 10.89   | 23,213    | 7,427            | 61.35          | 74.74            | 1,446              |

### 5. Travellers, overnight stays, capacity, occupancy, total number of staff from tourist sites with greater number at overnights stays

| Tourist sites             | Number of travellers |           | Overnight stays |           |         | Capacity  |                  | Occupancy rate |                  | Employed personnel |
|---------------------------|----------------------|-----------|-----------------|-----------|---------|-----------|------------------|----------------|------------------|--------------------|
|                           | Residents            | Residents | Residents       | Residents | Average | Estimated | Estimated        | Per            | Per              |                    |
|                           | in Spain             | abroad    | in Spain        | abroad    | stay    | bedplaces | holiday dwelling | bedplaces      | holiday dwelling |                    |
| San Bartolomé de Tirajana | 48,059               | 49,262    | 322,018         | 531,010   | 8.77    | 45,927    | 14,856           | 57.74          | 70.08            | 2,910              |
| Tias                      | 14,764               | 37,704    | 97,519          | 385,327   | 9.20    | 23,445    | 7,527            | 63.47          | 80.53            | 1,520              |
| Arona                     | 8,079                | 37,676    | 50,290          | 359,970   | 8.97    | 21,100    | 6,654            | 62.06          | 71.47            | 1,554              |
| Mogán                     | 11,935               | 23,436    | 72,650          | 283,572   | 10.07   | 19,142    | 5,926            | 57.67          | 69.55            | 1,255              |
| Calvià                    | 739                  | 35,359    | 5,250           | 317,173   | 8.93    | 17,798    | 6,753            | 56.64          | 60.90            | 1,089              |
| Alcúdia                   | 625                  | 35,687    | 6,648           | 306,607   | 8.63    | 10,812    | 3,835            | 89.16          | 95.93            | 967                |
| Adeje                     | 8,782                | 33,594    | 48,054          | 253,483   | 7.12    | 15,702    | 4,571            | 60.69          | 75.05            | 1,269              |
| Benidorm                  | 10,976               | 23,650    | 91,202          | 205,012   | 8.55    | 15,418    | 3,689            | 61.94          | 76.21            | 514                |
| Salou                     | 11,063               | 17,220    | 96,060          | 184,677   | 9.93    | 13,470    | 2,834            | 67.20          | 79.79            | 268                |
| Teguise                   | 10,455               | 16,913    | 68,227          | 203,669   | 9.93    | 12,408    | 3,752            | 67.61          | 88.96            | 1,164              |

\* Provinces belonging to uniprovincial Autonomous Communities have not been included because they are reflected in previous tables.

## 6. Percentage distribution of Spanish travellers by Autonomous Community of origin

| Origin<br>Destination | Total  | Andalucía | Aragón | Asturias (P. de) | Balears (Illes) | Canarias | Cantabria | Castilla y León | Castilla-La Mancha | Cataluña |
|-----------------------|--------|-----------|--------|------------------|-----------------|----------|-----------|-----------------|--------------------|----------|
| TOTAL                 | 100.00 | 11.33     | 2.13   | 1.60             | 1.04            | 18.02    | 0.58      | 2.55            | 3.17               | 15.67    |
| Andalucía             | 100.00 | 48.79     | 0.86   | 2.13             | 0.24            | 0.30     | 0.45      | 2.06            | 3.95               | 5.87     |
| Aragón                | 100.00 | 5.13      | 8.74   | 0.50             | 1.04            | 0.92     | 0.26      | 0.42            | 2.10               | 42.50    |
| Asturias (P. de)      | 100.00 | 6.20      | 2.75   | 5.75             | 0.83            | 1.19     | 0.91      | 7.44            | 6.06               | 11.07    |
| Balears (Illes)       | 100.00 | 11.41     | 0.81   | 0.85             | 9.60            | 0.76     | 0.54      | 0.75            | 0.57               | 33.39    |
| Canarias              | 100.00 | 4.43      | 0.37   | 0.39             | 0.36            | 55.15    | 0.29      | 0.57            | 0.42               | 3.44     |
| Cantabria             | 100.00 | 5.79      | 6.39   | 2.19             | 0.54            | 0.65     | 2.54      | 12.89           | 4.72               | 12.52    |
| Castilla y León       | 100.00 | 7.24      | 0.74   | 10.61            | 0.51            | 0.77     | 0.96      | 8.56            | 1.38               | 12.28    |
| Castilla-La Mancha    | 100.00 | 5.22      | 2.97   | 0.03             | 0.46            | 0.18     | 0.59      | 1.95            | 11.69              | 10.61    |
| Cataluña              | 100.00 | 2.33      | 5.48   | 0.49             | 0.26            | 0.48     | 0.57      | 1.16            | 0.86               | 65.53    |
| Comunitat Valenciana  | 100.00 | 2.72      | 3.45   | 1.72             | 0.30            | 0.25     | 0.66      | 5.14            | 8.15               | 6.83     |
| Extremadura           | 100.00 | 11.94     | 1.00   | 1.98             | 0.73            | 0.33     | -         | 2.84            | 4.82               | 11.88    |
| Galicia               | 100.00 | 5.63      | 2.23   | 6.15             | -               | 1.29     | 0.98      | 5.78            | 2.28               | 9.52     |
| Madrid (C. de)        | 100.00 | 14.93     | 2.44   | 3.77             | 1.62            | 5.22     | 1.81      | 5.36            | 2.82               | 13.86    |
| Murcia (Región de)    | 100.00 | 6.48      | 0.67   | 12.48            | 0.18            | 0.05     | 0.78      | 5.00            | 9.03               | 3.68     |
| Navarra (C. Foral de) | 100.00 | 10.82     | 2.74   | 1.07             | 0.23            | 2.28     | 0.79      | 2.59            | 2.00               | 22.89    |
| País Vasco            | 100.00 | 3.84      | 0.71   | 5.62             | -               | 0.71     | 3.18      | 4.89            | -                  | 23.36    |
| Rioja (La)            | 100.00 | 8.40      | 0.90   | 0.72             | 0.95            | -        | 0.89      | 2.15            | 3.04               | 24.33    |
| Ceuta y Melilla       | -      | -         | -      | -                | -               | -        | -         | -               | -                  | -        |

(conclusión)

| Origin<br>Destination | Comunitat Valenciana | Extrema- dura | Galicia | Madrid (C. de) | Murcia (Región de) | Navarra (C. Foral de) | País Vasco | Rioja (La) | Ceuta y Melilla |
|-----------------------|----------------------|---------------|---------|----------------|--------------------|-----------------------|------------|------------|-----------------|
| TOTAL                 | 7.56                 | 1.26          | 2.39    | 24.83          | 2.07               | 1.02                  | 3.97       | 0.67       | 0.16            |
| Andalucía             | 5.50                 | 3.10          | 1.03    | 17.27          | 4.19               | 0.37                  | 2.99       | 0.43       | 0.47            |
| Aragón                | 16.89                | 1.06          | 0.72    | 11.96          | 1.55               | 0.73                  | 5.05       | 0.42       | -               |
| Asturias (P. de)      | 7.84                 | 1.61          | 3.14    | 32.17          | 2.34               | 2.43                  | 7.00       | 1.28       | -               |
| Balears (Illes)       | 11.71                | 1.10          | 1.15    | 19.35          | 1.24               | 0.77                  | 4.86       | 0.76       | 0.38            |
| Canarias              | 1.22                 | 0.28          | 0.99    | 29.73          | 0.22               | 0.17                  | 1.86       | 0.10       | 0.02            |
| Cantabria             | 6.01                 | 2.04          | 3.74    | 23.60          | 1.26               | 3.20                  | 8.91       | 2.82       | 0.19            |
| Castilla y León       | 9.59                 | 5.64          | 5.00    | 25.15          | 3.14               | 1.26                  | 6.82       | 0.35       | -               |
| Castilla-La Mancha    | 31.81                | 0.07          | 2.03    | 26.19          | 2.91               | 0.44                  | 2.39       | 0.45       | -               |
| Cataluña              | 2.37                 | 0.35          | 0.58    | 9.97           | 0.33               | 2.23                  | 5.87       | 1.11       | 0.02            |
| Comunitat Valenciana  | 18.85                | 1.17          | 5.08    | 36.20          | 2.32               | 1.45                  | 4.59       | 1.01       | 0.09            |
| Extremadura           | 6.98                 | 20.26         | 1.58    | 24.75          | 1.85               | 0.57                  | 6.97       | 0.30       | 1.21            |
| Galicia               | 3.13                 | 2.70          | 27.87   | 23.72          | 0.81               | 0.58                  | 6.79       | 0.46       | 0.08            |
| Madrid (C. de)        | 12.50                | 2.75          | 5.18    | 12.39          | 4.31               | 2.12                  | 6.54       | 1.64       | 0.73            |
| Murcia (Región de)    | 6.22                 | 1.52          | 0.59    | 28.65          | 21.60              | 1.06                  | 1.97       | -          | 0.03            |
| Navarra (C. Foral de) | 14.01                | 1.68          | 2.14    | 10.78          | 2.04               | 10.26                 | 12.19      | 1.15       | 0.33            |
| País Vasco            | 4.64                 | 0.85          | 2.29    | 12.45          | 0.59               | 4.65                  | 22.83      | 9.36       | -               |
| Rioja (La)            | 7.27                 | -             | -       | 15.56          | 0.95               | -                     | 31.01      | 3.81       | -               |
| Ceuta y Melilla       | -                    | -             | -       | -              | -                  | -                     | -          | -          | -               |

## 7. Percentage distribution of overnight stays by Autonomous Community of origin

| Origin<br>Destination | Total  | Andalucía | Aragón | Asturias<br>(P. de) | Balears<br>(Illes) | Canarias | Cantabria | Castilla y<br>León | Castilla-La<br>Mancha | Cataluña |
|-----------------------|--------|-----------|--------|---------------------|--------------------|----------|-----------|--------------------|-----------------------|----------|
| TOTAL                 | 100.00 | 9.39      | 2.30   | 1.95                | 0.73               | 14.33    | 0.55      | 2.39               | 3.24                  | 18.63    |
| Andalucía             | 100.00 | 44.63     | 0.83   | 2.64                | 0.09               | 0.25     | 0.45      | 1.89               | 3.59                  | 5.98     |
| Aragón                | 100.00 | 6.55      | 10.84  | 0.18                | 0.76               | 1.26     | 0.22      | 0.27               | 2.15                  | 33.79    |
| Asturias (P. de)      | 100.00 | 6.87      | 2.46   | 4.99                | 0.54               | 1.39     | 0.41      | 5.86               | 5.39                  | 10.46    |
| Balears (Illes)       | 100.00 | 11.54     | 0.52   | 1.11                | 7.38               | 0.46     | 0.47      | 0.57               | 0.28                  | 38.98    |
| Canarias              | 100.00 | 4.57      | 0.41   | 0.45                | 0.26               | 52.60    | 0.39      | 0.57               | 0.46                  | 3.98     |
| Cantabria             | 100.00 | 6.02      | 6.95   | 1.39                | 0.27               | 0.92     | 3.10      | 10.74              | 4.22                  | 11.98    |
| Castilla y León       | 100.00 | 7.45      | 1.17   | 16.65               | 0.41               | 0.16     | 0.60      | 10.07              | 1.11                  | 13.10    |
| Castilla-La Mancha    | 100.00 | 6.44      | 2.10   | 0.03                | 0.28               | 0.30     | 0.37      | 1.26               | 8.80                  | 12.49    |
| Cataluña              | 100.00 | 1.77      | 4.70   | 0.32                | 0.19               | 0.30     | 0.34      | 0.89               | 0.75                  | 70.85    |
| Comunitat Valenciana  | 100.00 | 2.23      | 3.58   | 1.66                | 0.13               | 0.17     | 0.60      | 4.54               | 7.43                  | 6.14     |
| Extremadura           | 100.00 | 10.56     | 0.70   | 2.44                | 0.72               | 0.46     | -         | 3.37               | 3.51                  | 14.45    |
| Galicia               | 100.00 | 5.28      | 2.25   | 6.14                | -                  | 1.57     | 0.97      | 5.25               | 1.85                  | 10.32    |
| Madrid (C. de)        | 100.00 | 14.42     | 2.51   | 3.27                | 2.30               | 5.61     | 2.17      | 5.26               | 3.64                  | 14.85    |
| Murcia (Región de)    | 100.00 | 5.99      | 0.58   | 18.50               | 0.13               | 0.04     | 0.86      | 4.69               | 8.10                  | 2.72     |
| Navarra (C. Foral de) | 100.00 | 11.41     | 2.43   | 1.03                | 0.68               | 1.73     | 0.50      | 1.77               | 1.75                  | 24.82    |
| País Vasco            | 100.00 | 5.37      | 0.86   | 4.85                | -                  | 0.71     | 1.59      | 3.77               | 0.48                  | 26.18    |
| Rioja (La)            | 100.00 | 9.10      | 1.04   | 0.55                | 0.73               | -        | 1.02      | 1.59               | 2.64                  | 25.23    |
| Ceuta y Melilla       | -      | -         | -      | -                   | -                  | -        | -         | -                  | -                     | -        |

(conclusión)

| Origin<br>Destination | Comunitat<br>Valenciana | Extrema-<br>dura | Galicia | Madrid<br>(C. de) | Murcia<br>(Región de) | Navarra (C.<br>Foral de) | País<br>Vasco | Rioja (La) | Ceuta y<br>Melilla |
|-----------------------|-------------------------|------------------|---------|-------------------|-----------------------|--------------------------|---------------|------------|--------------------|
| TOTAL                 | 8.04                    | 1.10             | 2.12    | 27.08             | 2.00                  | 1.00                     | 4.37          | 0.68       | 0.09               |
| Andalucía             | 4.19                    | 3.32             | 0.92    | 23.85             | 3.09                  | 0.28                     | 3.35          | 0.34       | 0.32               |
| Aragón                | 20.93                   | 0.83             | 0.52    | 13.71             | 1.28                  | 1.08                     | 5.37          | 0.26       | -                  |
| Asturias (P. de)      | 8.11                    | 1.55             | 2.24    | 37.20             | 1.48                  | 2.00                     | 7.88          | 1.18       | -                  |
| Balears (Illes)       | 10.77                   | 0.97             | 0.74    | 18.17             | 0.74                  | 0.91                     | 5.41          | 0.70       | 0.29               |
| Canarias              | 1.38                    | 0.31             | 0.97    | 30.91             | 0.19                  | 0.19                     | 2.27          | 0.10       | 0.01               |
| Cantabria             | 5.88                    | 2.37             | 3.19    | 28.53             | 0.88                  | 2.72                     | 8.03          | 2.67       | 0.16               |
| Castilla y León       | 6.44                    | 3.20             | 12.38   | 17.74             | 2.62                  | 0.26                     | 6.58          | 0.07       | -                  |
| Castilla-La Mancha    | 37.97                   | 0.12             | 1.56    | 21.19             | 3.88                  | 0.36                     | 2.53          | 0.32       | -                  |
| Cataluña              | 1.44                    | 0.20             | 0.36    | 8.22              | 0.15                  | 1.98                     | 6.25          | 1.28       | 0.01               |
| Comunitat Valenciana  | 19.69                   | 0.94             | 4.46    | 39.14             | 2.12                  | 1.32                     | 4.84          | 0.96       | 0.05               |
| Extremadura           | 6.12                    | 17.36            | 1.87    | 25.32             | 2.64                  | 0.74                     | 9.33          | 0.18       | 0.24               |
| Galicia               | 2.36                    | 3.13             | 19.61   | 30.24             | 0.60                  | 1.12                     | 8.46          | 0.58       | 0.27               |
| Madrid (C. de)        | 9.68                    | 2.38             | 4.80    | 15.75             | 4.13                  | 2.08                     | 5.28          | 1.50       | 0.35               |
| Murcia (Región de)    | 4.24                    | 1.15             | 0.36    | 27.94             | 21.61                 | 1.13                     | 1.88          | 0.06       | 0.03               |
| Navarra (C. Foral de) | 14.07                   | 2.00             | 0.91    | 15.11             | 3.33                  | 5.33                     | 11.19         | 1.51       | 0.42               |
| País Vasco            | 3.92                    | 0.44             | 4.42    | 14.51             | 1.18                  | 3.87                     | 22.56         | 5.30       | -                  |
| Rioja (La)            | 8.92                    | -                | -       | 13.90             | 5.15                  | -                        | 28.65         | 1.49       | -                  |
| Ceuta y Melilla       | -                       | -                | -       | -                 | -                     | -                        | -             | -          | -                  |

Provisional data

### 8. Travellers and overnight stays by countries of residence

| Countries                                | Travellers |        | Overnight stays |        |
|--|------------|--------|-----------------|--------|
|  | Total      | %      | Total           | %      |
| TOTAL                                    | 1,238,230  | 100.00 | 11,066,679      | 100.00 |
| Residents in Spain                       | 524,460    | 42.36  | 4,112,709       | 37.16  |
| Residents abroad                         | 713,770    | 57.64  | 6,953,970       | 62.84  |
| Total residents abroad                   | 713,770    | 100.00 | 6,953,970       | 100.00 |
| Total residents in E.U (excluding Spain) | 672,871    | 94.27  | 6,617,432       | 95.16  |
| - Germany                                | 111,926    | 15.68  | 1,193,490       | 17.16  |
| - Austria                                | 3,082      | 0.43   | 26,878          | 0.39   |
| - Belgium                                | 9,497      | 1.33   | 95,380          | 1.37   |
| -Denmark                                 | 10,757     | 1.51   | 90,308          | 1.30   |
| - Finland                                | 2,763      | 0.39   | 22,863          | 0.33   |
| - France                                 | 81,773     | 11.46  | 851,189         | 12.24  |
| - Greece                                 | 1,065      | 0.15   | 10,356          | 0.15   |
| - Ireland                                | 45,912     | 6.43   | 457,624         | 6.58   |
| - Italy                                  | 49,489     | 6.93   | 416,496         | 5.99   |
| - Luxembourg                             | 914        | 0.13   | 9,604           | 0.14   |
| - Netherlands                            | 44,678     | 6.26   | 468,661         | 6.74   |
| - Poland                                 | 3,972      | 0.56   | 27,687          | 0.40   |
| - Portugal                               | 11,637     | 1.63   | 90,307          | 1.30   |
| - United Kingdom                         | 261,872    | 36.69  | 2,629,592       | 37.81  |
| - Czech Republic                         | 5,284      | 0.74   | 31,267          | 0.45   |
| - Sweden                                 | 18,735     | 2.62   | 116,011         | 1.67   |
| - Other EU countries                     | 9,515      | 1.33   | 79,717          | 1.15   |
| Norway                                   | 6,609      | 0.93   | 62,253          | 0.90   |
| Other european countries                 | 19,171     | 2.69   | 156,426         | 2.25   |
| United States of America                 | 2,294      | 0.32   | 17,802          | 0.26   |
| Rest of America                          | 4,321      | 0.61   | 31,125          | 0.45   |
| African countries                        | 3,363      | 0.47   | 32,461          | 0.47   |
| Other countries                          | 5,139      | 0.72   | 36,472          | 0.52   |



## Tourist accommodation occupancy survey:

### (Rural tourist accommodation)

August 2008

Provisional data

#### 1. Number of travellers, overnight stays and average stay

| Autonomous Communities      | Number of travellers |                    |                  | Number of overnight stays |                    |                  | Average stay |
|-----------------------------|----------------------|--------------------|------------------|---------------------------|--------------------|------------------|--------------|
|                             | Total                | Residents In Spain | Residents abroad | Total                     | Residents In Spain | Residents abroad |              |
| <b>TOTAL</b>                | <b>360,215</b>       | <b>318,941</b>     | <b>41,274</b>    | <b>1,706,400</b>          | <b>1,451,084</b>   | <b>255,316</b>   | <b>4.74</b>  |
| Andalucía                   | 21,851               | 17,082             | 4,769            | 126,311                   | 90,532             | 35,779           | 5.78         |
| Aragón <sup>2</sup>         | 24,093               | 22,066             | 2,027            | 119,777                   | 105,604            | 14,174           | 4.97         |
| Asturias (Principado de)    | 34,269               | 32,514             | 1,755            | 205,521                   | 195,510            | 10,011           | 6.00         |
| Balears (Illes)             | 13,288               | 3,839              | 9,449            | 88,022                    | 23,366             | 64,655           | 6.62         |
| Canarias                    | 5,270                | 3,549              | 1,721            | 37,471                    | 20,651             | 16,820           | 7.11         |
| Cantabria                   | 38,506               | 36,295             | 2,211            | 165,648                   | 157,032            | 8,616            | 4.30         |
| Castilla y León             | 67,524               | 63,269             | 4,255            | 249,502                   | 231,214            | 18,289           | 3.70         |
| Castilla-La Mancha          | 17,468               | 16,875             | 593              | 64,549                    | 61,493             | 3,056            | 3.70         |
| Cataluña                    | 35,655               | 29,090             | 6,565            | 230,328                   | 180,182            | 50,146           | 6.46         |
| Comunitat Valenciana        | 14,530               | 13,614             | 916              | 67,159                    | 61,212             | 5,948            | 4.62         |
| Extremadura                 | 13,238               | 12,825             | 413              | 46,912                    | 43,870             | 3,042            | 3.54         |
| Galicia <sup>1</sup>        | 30,862               | 27,804             | 3,058            | 97,850                    | 88,676             | 9,174            | 3.17         |
| Madrid (C. de)              | 8,343                | 8,066              | 277              | 22,135                    | 21,135             | 1,001            | 2.65         |
| Murcia (Región de)          | 5,784                | 5,609              | 174              | 37,912                    | 36,885             | 1,026            | 6.56         |
| Navarra (C. Foral de)       | 9,644                | 9,152              | 492              | 63,094                    | 60,174             | 2,920            | 6.54         |
| País Vasco                  | 16,829               | 14,350             | 2,479            | 70,755                    | 60,360             | 10,395           | 4.20         |
| Rioja (La)                  | 3,060                | 2,941              | 119              | 13,453                    | 13,189             | 265              | 4.40         |
| Ceuta y Melilla             | -                    | -                  | -                | -                         | -                  | -                | -            |
| Interannual rate            | -2.40                | -3.09              | 3.32             | 1.36                      | -0.81              | 15.61            | 3.85         |
| Cumulative interannual rate | -1.08                | -1.08              | -1.08            | 1.43                      | 0.46               | 6.08             | 2.53         |

#### 2. Open rural tourist accommodation and estimated vacancies, levels of occupancy and personnel employed by Autonomous Communities

| Autonomous Communities      | Nº of rural open estimated accom. | Nº of vacancies | Level of occupancy |                          |              | Employed personnel |
|-----------------------------|-----------------------------------|-----------------|--------------------|--------------------------|--------------|--------------------|
|                             |                                   |                 | By vacancies       | By vacancies at week end | By rooms     |                    |
| <b>TOTAL</b>                | <b>13,282</b>                     | <b>120,517</b>  | <b>44.77</b>       | <b>47.65</b>             | <b>53.03</b> | <b>21,057</b>      |
| Andalucía                   | 1,193                             | 9,571           | 41.84              | 44.60                    | 57.19        | 2,049              |
| Aragón <sup>2</sup>         | 1,004                             | 7,684           | 49.40              | 50.27                    | 55.03        | 1,219              |
| Asturias (Principado de)    | 1,267                             | 10,675          | 60.50              | 57.45                    | 66.96        | 1,580              |
| Balears (Illes)             | 212                               | 3,778           | 72.58              | 72.56                    | 74.66        | 1,105              |
| Canarias                    | 702                               | 3,632           | 32.98              | 32.94                    | 48.17        | 1,011              |
| Cantabria                   | 443                               | 7,530           | 67.98              | 66.25                    | 70.71        | 864                |
| Castilla y León             | 2,604                             | 23,351          | 34.20              | 39.13                    | 40.60        | 4,205              |
| Castilla-La Mancha          | 1,058                             | 8,117           | 25.30              | 33.69                    | 30.93        | 1,672              |
| Cataluña                    | 1,581                             | 12,693          | 57.69              | 57.63                    | 71.40        | 2,257              |
| Comunitat Valenciana        | 885                               | 8,238           | 26.24              | 31.25                    | 39.26        | 1,271              |
| Extremadura                 | 426                               | 5,121           | 29.38              | 35.13                    | 35.52        | 740                |
| Galicia <sup>1</sup>        | 517                               | 6,306           | 48.68              | 52.58                    | 53.78        | 994                |
| Madrid (C. de)              | 179                               | 3,148           | 22.57              | 36.18                    | 30.89        | 555                |
| Murcia (Región de)          | 248                               | 2,730           | 44.03              | 49.77                    | 49.85        | 391                |
| Navarra (C. Foral de)       | 557                               | 3,811           | 52.46              | 54.49                    | 61.06        | 610                |
| País Vasco                  | 315                               | 3,290           | 66.82              | 67.50                    | 71.84        | 424                |
| Rioja (La)                  | 90                                | 844             | 50.64              | 52.43                    | 50.62        | 111                |
| Ceuta y Melilla             | -                                 | -               | -                  | -                        | -            | -                  |
| Interannual rate            | 10.99                             | 11.09           | -8.55              | -11.80                   | -3.63        | 3.05               |
| Cumulative interannual rate | 9.48                              | 9.85            | -8.02              | -5.40                    | -3.58        | 4.24               |

<sup>1</sup> Information provided about the total number of travellers and overnight stays in the whole month.

<sup>2</sup> Due to the updating in the directory of establishments carried out in the province of Teruel and Zaragoza, the data to be published from January 2008 (Teruel, Zaragoza, Aragón and the national total) are not directly comparable with the data published last year, therefore, data link coefficients have been calculated to allow the comparison of data between different years. These coefficients are available in the information service of INE. ([www.ine.es/infoine](http://www.ine.es/infoine), tfno: 91 583 91 00).

### 3. Number of travellers, overnight stays and average stay of provinces with the greatest number of overnight stays<sup>3</sup>

| Provinces            | Number of travellers |                    |                  | Number of overnight stays |                    |                  | Average stay |
|----------------------|----------------------|--------------------|------------------|---------------------------|--------------------|------------------|--------------|
|                      | Total                | Residents In Spain | Residents abroad | Total                     | Residents In Spain | Residents abroad |              |
| Girona               | 15,099               | 12,770             | 2,329            | 88,727                    | 74,606             | 14,121           | 5.88         |
| Huesca               | 13,421               | 12,082             | 1,339            | 74,236                    | 64,030             | 10,206           | 5.53         |
| Lleida               | 9,152                | 8,031              | 1,121            | 69,200                    | 60,448             | 8,751            | 7.56         |
| Málaga               | 6,572                | 5,021              | 1,550            | 54,557                    | 37,009             | 17,548           | 8.30         |
| Barcelona            | 7,243                | 5,071              | 2,172            | 50,824                    | 30,230             | 20,594           | 7.02         |
| Ávila                | 11,476               | 11,150             | 325              | 47,273                    | 44,014             | 3,259            | 4.12         |
| Cáceres              | 12,419               | 12,038             | 382              | 44,647                    | 41,821             | 2,826            | 3.59         |
| León                 | 11,147               | 10,416             | 731              | 39,625                    | 37,042             | 2,583            | 3.55         |
| Guipúzcoa            | 8,598                | 7,429              | 1,169            | 38,897                    | 33,632             | 5,264            | 4.52         |
| Pontevedra           | 8,024                | 7,093              | 931              | 33,317                    | 28,820             | 4,497            | 4.15         |
| Salamanca            | 8,003                | 7,389              | 614              | 32,375                    | 28,787             | 3,588            | 4.05         |
| A Coruña             | 8,821                | 7,988              | 833              | 30,424                    | 27,996             | 2,428            | 3.45         |
| Albacete             | 6,299                | 6,185              | 114              | 29,546                    | 29,071             | 476              | 4.69         |
| St. Cruz de Tenerife | 3,477                | 2,183              | 1,294            | 29,142                    | 14,867             | 14,275           | 8.38         |
| Soria                | 6,369                | 6,049              | 320              | 27,699                    | 26,500             | 1,198            | 4.35         |

### 4. Open rural tourist accommodation and estimated vacancies degrees of occupancy and personnel employed in provinces with the highest number of overnight stays<sup>3</sup>

| Provinces            | Nº of rural open estimated accommodation | Nº of vacancies | Level of occupancy |                             |          | Employed personnel |
|----------------------|--|-----------------|--------------------|-----------------------------|----------|--------------------|
|                      |  |                 | By vacancies       | By vacancies at the weekend | By rooms |                    |
| Girona               | 546                                      | 4,494           | 62.84              | 62.21                       | 83.42    | 805                |
| Huesca               | 583                                      | 4,293           | 54.80              | 54.04                       | 60.27    | 689                |
| Lleida               | 534                                      | 3,822           | 57.28              | 53.01                       | 70.04    | 770                |
| Málaga               | 539                                      | 3,599           | 48.25              | 49.99                       | 72.32    | 900                |
| Barcelona            | 321                                      | 2,843           | 57.02              | 61.49                       | 62.02    | 468                |
| Ávila                | 638                                      | 4,898           | 30.88              | 40.60                       | 34.36    | 1,091              |
| Cáceres              | 397                                      | 4,856           | 29.49              | 34.95                       | 35.18    | 677                |
| León                 | 358                                      | 3,356           | 37.91              | 38.96                       | 48.60    | 625                |
| Guipúzcoa            | 137                                      | 1,495           | 79.61              | 79.38                       | 87.65    | 190                |
| Pontevedra           | 174                                      | 2,093           | 49.90              | 52.15                       | 56.90    | 320                |
| Salamanca            | 406                                      | 3,195           | 32.53              | 37.77                       | 42.57    | 569                |
| A Coruña             | 141                                      | 1,671           | 56.39              | 63.18                       | 65.70    | 279                |
| Albacete             | 485                                      | 2,695           | 34.58              | 41.94                       | 42.97    | 839                |
| St. Cruz de Tenerife | 591                                      | 2,856           | 32.66              | 31.46                       | 47.98    | 781                |
| Soria                | 201                                      | 1,917           | 46.22              | 49.31                       | 52.11    | 313                |

<sup>3</sup> Provinces belonging to uniprovincial Autonomous Communities have not been included because they are reflected in previous tables.

## 5. Number of travellers, overnight stays, average stay, estimated vacancies, levels of occupancy and personnel employed in areas with the highest number of overnight stays

| Areas                       | Number of travellers  |                     | Number of overnight stays |                     | Average<br>stay | Capacity                                  |                    | Level of occupancy |                                |          |
|-----------------------------|-----------------------|---------------------|---------------------------|---------------------|-----------------|---|--------------------|--------------------|--------------------------------|----------|
|                             | Residents<br>In Spain | Residents<br>abroad | Residents<br>In Spain     | Residents<br>abroad |                 | Nº of rural<br>open esti-<br>mated accom. | Nº of<br>vacancies | By<br>vacancies    | By vacancies<br>at week<br>end | By rooms |
| Pirineo Catalán             | 14,146                | 2,353               | 90,831                    | 18,549              | 6.63            | 764                                       | 5,922              | 58.47              | 58.11                          | 74.50    |
| Costa Verde                 | 11,159                | 718                 | 71,737                    | 6,313               | 6.57            | 387                                       | 3,682              | 66.37              | 65.00                          | 73.34    |
| Isla de Mallorca            | 2,381                 | 8,482               | 14,949                    | 59,819              | 6.88            | 184                                       | 3,254              | 71.63              | 71.84                          | 73.34    |
| Pirineo Aragonés            | 12,454                | 1,070               | 63,869                    | 7,883               | 5.31            | 546                                       | 4,086              | 55.61              | 55.53                          | 61.60    |
| Pirineo Navarro             | 9,003                 | 491                 | 58,129                    | 2,911               | 6.43            | 514                                       | 3,454              | 55.89              | 58.61                          | 65.28    |
| Costa Brava                 | 6,904                 | 1,702               | 45,837                    | 11,356              | 6.64            | 320                                       | 2,666              | 68.58              | 65.54                          | 87.97    |
| P.Nacional Picos De Europ   | 8,546                 | 660                 | 48,436                    | 3,586               | 5.65            | 237                                       | 2,244              | 72.37              | 65.16                          | 76.72    |
| Pirineo Vasco               | 3,877                 | 574                 | 18,482                    | 3,477               | 4.93            | 109                                       | 1,091              | 62.06              | 59.57                          | 65.07    |
| Costa Daurada               | 3,219                 | 943                 | 14,898                    | 6,679               | 5.18            | 181                                       | 1,534              | 44.87              | 48.60                          | 58.01    |
| P.Natural Oyambre           | 4,251                 | 510                 | 19,241                    | 1,248               | 4.30            | 54  | 836                | 76.97              | 71.28                          | 80.95    |
| Rías Baixas                 | 3,897                 | 472                 | 14,236                    | 1,606               | 3.63            | 68  | 794                | 60.50              | 72.47                          | 74.48    |
| Costa Guipuzcoana           | 2,710                 | 378                 | 13,381                    | 1,748               | 4.90            | 45  | 526                | 87.64              | 87.11                          | 98.76    |
| Isla de La Palma            | 404                   | 384                 | 5,522                     | 8,103               | 17.29           | 358                                       | 1,467              | 29.78              | 26.91                          | 44.31    |
| P.Natural Calares y Cabeca  | 2,429                 | -                   | 12,060                    | -                   | 4.97            | 182                                       | 896                | 42.38              | 51.79                          | 53.66    |
| P.Natural Sierras de Tejeda | 891                   | 297                 | 7,526                     | 4,407               | 10.04           | 135                                       | 771                | 49.90              | 47.83                          | 64.50    |

## 6. Number of travellers, overnight stays, average stay, estimated vacancies, levels of occupancy and personnel employed class per rural house per Autonomous Community<sup>4</sup>

| Autonomous<br>Communities       | Number of travellers  |                     | Number of overnight stays |                     | Average<br>stay | Capacity                                  |                    | Level of occupancy |                                | Employed<br>personnel |
|---------------------------------|-----------------------|---------------------|---------------------------|---------------------|-----------------|---|--------------------|--------------------|--------------------------------|-----------------------|
|                                 | Residents<br>In Spain | Residents<br>abroad | Residents<br>In Spain     | Residents<br>abroad |                 | Nº of rural<br>open esti-<br>mated accom. | Nº of<br>vacancies | By<br>vacancies    | By vacancies<br>at week<br>end |                       |
| TOTAL                           | 184,876               | 21,949              | 949,749                   | 157,375             | 5.35            | 10,858                                    | 80,731             | 43.50              | 46.25                          | 15,152                |
| Andalucía                       | 15,665                | 4,464               | 84,252                    | 34,902              | 5.92            | 1,172                                     | 9,199              | 41.06              | 44.06                          | 1,978                 |
| Aragón                          | 16,276                | 1,403               | 70,706                    | 8,163               | 4.46            | 713                                       | 5,483              | 45.36              | 45.97                          | 880                   |
| Asturias (Principado de)        | 15,649                | 566                 | 101,859                   | 4,466               | 6.56            | 905                                       | 5,448              | 61.35              | 58.07                          | 1,023                 |
| Balears (Illes)                 | 595                   | 1,383               | 2,899                     | 7,866               | 5.44            | 40  | 544                | 62.70              | 60.82                          | 132                   |
| Canarias                        | 2,349                 | 1,058               | 16,539                    | 13,272              | 8.75            | 680                                       | 3,072              | 31.06              | 29.45                          | 903                   |
| Cantabria                       | 6,588                 | 247                 | 42,787                    | 3,316               | 6.75            | 136                                       | 2,003              | 72.35              | 69.72                          | 216                   |
| Castilla y León                 | 30,267                | 1,734               | 148,390                   | 13,086              | 5.05            | 2,148                                     | 14,131             | 36.54              | 40.77                          | 2,836                 |
| Castilla-La Mancha <sup>5</sup> | 16,374                | 580                 | 59,873                    | 2,985               | 3.71            | 1,040                                     | 7,787              | 25.68              | 34.38                          | 1,630                 |
| Cataluña                        | 23,302                | 5,963               | 152,686                   | 46,742              | 6.81            | 1,417                                     | 10,717             | 59.19              | 58.90                          | 1,998                 |
| Comunitat Valenciana            | 9,554                 | 759                 | 44,322                    | 5,556               | 4.84            | 852                                       | 6,276              | 25.58              | 29.84                          | 1,119                 |
| Extremadura                     | 6,145                 | 308                 | 23,784                    | 2,525               | 4.08            | 300                                       | 2,712              | 31.04              | 35.19                          | 430                   |
| Galicia                         | 17,595                | 1,685               | 62,045                    | 5,232               | 3.49            | 364                                       | 4,239              | 49.66              | 54.79                          | 629                   |
| Madrid (C. de)                  | 620                   | 22                  | 2,679                     | 93                  | 4.32            | 36  | 285                | 30.87              | 47.00                          | 53                    |
| Murcia (Región de) <sup>5</sup> | 5,156                 | 169                 | 35,566                    | 1,017               | 6.87            | 242                                       | 2,529              | 45.83              | 51.36                          | 370                   |
| Navarra (C. Foral de)           | 9,152                 | 492                 | 60,174                    | 2,920               | 6.54            | 557                                       | 3,811              | 52.46              | 54.49                          | 610                   |
| País Vasco                      | 6,647                 | 996                 | 28,000                    | 4,969               | 4.31            | 166                                       | 1,651              | 62.63              | 64.86                          | 235                   |
| Rioja (La)                      | 2,941                 | 119                 | 13,189                    | 265                 | 4.40            | 90  | 844                | 50.64              | 52.43                          | 111                   |

<sup>4</sup> To facilitate the comparability between data from different Autonomous Communities (and because of the different regulation and different characteristics), a group called rural house has been created, with those accommodations with similar typology (location, capacity, etc...). The variables included in the previous table have been estimated with that type of establishments.

The variables shown in the table have been estimated with the type of accommodation under rural tourist accommodation.

<sup>5</sup> The size of the sample in these communities does not facilitate the INE the broken down results, with the objective of maintaining statistical secrecy. Nevertheless, the data corresponding to these communities are included in the total.

## 7. Percentage distribution of Spanish travellers by Autonomous Community of origin

| Origin<br>Destination | Total  | Andalucía | Aragón | Asturias<br>(P. de) | Balears<br>(Illes) | Canarias | Cantabria | Castilla y<br>León | Castilla-La<br>Mancha | Cataluña |
|-----------------------|--------|-----------|--------|---------------------|--------------------|----------|-----------|--------------------|-----------------------|----------|
| TOTAL                 | 100.00 | 8.23      | 2.33   | 1.63                | 0.85               | 1.30     | 1.30      | 4.25               | 3.36                  | 22.43    |
| Andalucía             | 100.00 | 52.35     | 0.72   | 0.05                | 0.64               | 1.37     | 0.67      | 0.84               | 2.29                  | 10.42    |
| Aragón                | 100.00 | 6.49      | 12.90  | 0.54                | 0.16               | 0.14     | 0.36      | 1.25               | 1.39                  | 29.81    |
| Asturias (P. de)      | 100.00 | 9.01      | 0.41   | 4.62                | 2.46               | 1.05     | 1.19      | 5.21               | 3.75                  | 13.78    |
| Balears (Illes)       | 100.00 | 2.23      | 1.48   | 0.91                | 23.68              | 0.24     | 1.08      | 0.88               | 0.47                  | 37.85    |
| Canarias              | 100.00 | 3.67      | 0.51   | -                   | -                  | 54.37    | 0.50      | 1.48               | -                     | 19.74    |
| Cantabria             | 100.00 | 5.22      | 3.85   | 2.24                | 0.50               | 1.42     | 3.93      | 7.71               | 2.86                  | 16.84    |
| Castilla y León       | 100.00 | 6.01      | 1.09   | 2.86                | 0.28               | 0.46     | 1.95      | 10.21              | 3.74                  | 12.09    |
| Castilla-La Mancha    | 100.00 | 5.94      | 2.09   | 0.83                | 0.27               | 0.19     | 0.24      | 0.87               | 15.69                 | 10.26    |
| Cataluña              | 100.00 | 1.22      | 1.07   | -                   | 0.33               | 0.03     | -         | -                  | 0.34                  | 83.85    |
| Comunitat Valenciana  | 100.00 | 3.17      | 1.25   | -                   | 0.56               | 0.25     | 0.83      | 0.49               | 4.67                  | 9.52     |
| Extremadura           | 100.00 | 11.96     | 0.89   | 0.86                | 0.16               | 0.82     | 0.59      | 1.95               | 2.53                  | 12.80    |
| Galicia               | 100.00 | 8.06      | 1.56   | 1.45                | 0.21               | 1.74     | 1.49      | 2.15               | 2.56                  | 14.34    |
| Madrid (C. de)        | 100.00 | 2.84      | 0.27   | 0.96                | -                  | 0.35     | 0.81      | 5.33               | 3.15                  | 3.52     |
| Murcia (Región de)    | 100.00 | 3.86      | -      | 0.25                | 1.26               | -        | -         | 1.01               | 2.69                  | 7.26     |
| Navarra (C. Foral de) | 100.00 | 2.60      | 0.56   | 1.30                | -                  | -        | -         | -                  | 3.34                  | 27.27    |
| País Vasco            | 100.00 | 4.61      | 3.63   | 0.37                | 0.80               | 0.78     | 0.58      | 2.43               | 1.40                  | 41.34    |
| Rioja (La)            | 100.00 | 4.05      | 6.31   | -                   | 0.90               | -        | 2.03      | 6.53               | 1.35                  | 21.40    |
| Ceuta y Melilla       | -      | -         | -      | -                   | -                  | -        | -         | -                  | -                     | -        |

(conclusion)

| Origin<br>Destination | Comunitat<br>Valenciana | Extrema-<br>dura | Galicia | Madrid<br>(C. de) | Murcia<br>(Región) | Navarra<br>(C. Foral) | País<br>Vasco | Rioja (La) | Ceuta y<br>Melilla |
|-----------------------|-------------------------|------------------|---------|-------------------|--------------------|-----------------------|---------------|------------|--------------------|
| TOTAL                 | 12.61                   | 1.70             | 3.62    | 24.78             | 3.58               | 1.38                  | 5.95          | 0.58       | 0.12               |
| Andalucía             | 6.69                    | 0.60             | 0.63    | 12.74             | 4.47               | 0.48                  | 4.25          | 0.13       | 0.66               |
| Aragón                | 21.03                   | 0.63             | 1.04    | 14.37             | 3.60               | 1.06                  | 4.58          | 0.66       | -                  |
| Asturias (P. de)      | 10.77                   | 1.81             | 2.87    | 32.70             | 2.13               | 1.76                  | 5.23          | 1.25       | -                  |
| Balears (Illes)       | 5.77                    | -                | 0.78    | 19.62             | -                  | 0.49                  | 2.08          | 0.46       | 1.98               |
| Canarias              | 3.40                    | -                | 1.13    | 15.08             | -                  | -                     | 0.12          | -          | -                  |
| Cantabria             | 9.65                    | 0.98             | 2.38    | 30.74             | 1.72               | 1.84                  | 6.02          | 2.10       | -                  |
| Castilla y León       | 6.91                    | 1.60             | 3.39    | 36.53             | 2.90               | 1.25                  | 8.43          | 0.26       | 0.04               |
| Castilla- La Mancha   | 25.81                   | 0.13             | 1.01    | 23.97             | 9.60               | 0.08                  | 2.75          | 0.17       | 0.10               |
| Cataluña              | 3.45                    | 0.26             | -       | 4.32              | 2.34               | 0.34                  | 2.15          | 0.30       | -                  |
| Comunitat Valenciana  | 68.31                   | 0.13             | 0.17    | 5.89              | 1.63               | -                     | 2.23          | -          | 0.91               |
| Extremadura           | 10.67                   | 19.95            | 0.55    | 26.17             | 1.76               | 0.24                  | 8.12          | -          | -                  |
| Galicia               | 8.51                    | 0.99             | 22.81   | 25.40             | 2.43               | 0.88                  | 5.09          | 0.28       | 0.06               |
| Madrid (C. de)        | 3.78                    | 0.78             | 0.61    | 74.24             | 1.14               | 0.79                  | 1.33          | -          | 0.11               |
| Murcia (Región de)    | 23.27                   | 0.08             | -       | 10.92             | 48.33              | -                     | 1.07          | -          | -                  |
| Navarra (C. Foral de) | 13.17                   | 1.86             | 3.34    | 15.58             | 2.97               | 12.24                 | 15.77         | -          | -                  |
| País Vasco            | 6.98                    | 0.25             | 0.92    | 15.69             | 1.10               | 3.03                  | 15.56         | 0.50       | 0.05               |
| Rioja (La)            | 17.79                   | 0.45             | 3.38    | 23.42             | 1.58               | 0.90                  | 8.11          | 1.80       | -                  |
| Ceuta y Melilla       | -                       | -                | -       | -                 | -                  | -                     | -             | -          | -                  |

## 8. Percentage distribution of overnight stays by Spaniards by Autonomous Community of origin

| Origin \ Destination  | Total  | Andalucía | Aragón | Asturias (P. de) | Balears (Illes) | Canarias | Cantabria | Castilla y León | Castilla-La Mancha | Cataluña |
|-----------------------|--------|-----------|--------|------------------|-----------------|----------|-----------|-----------------|--------------------|----------|
| TOTAL                 | 100.00 | 8.43      | 2.08   | 1.19             | 0.70            | 1.53     | 0.88      | 3.15            | 2.83               | 27.22    |
| Andalucía             | 100.00 | 47.57     | 1.09   | 0.09             | 0.28            | 1.36     | 0.49      | 0.49            | 2.34               | 14.76    |
| Aragón                | 100.00 | 7.03      | 12.12  | 0.52             | 0.69            | 0.58     | 0.19      | 0.88            | 0.81               | 30.44    |
| Asturias (P. de)      | 100.00 | 7.75      | 0.62   | 3.09             | 1.55            | 1.24     | 0.58      | 4.42            | 3.28               | 13.15    |
| Balears (Illes)       | 100.00 | 3.37      | 1.30   | 0.82             | 8.32            | 0.49     | 0.55      | 1.30            | 0.12               | 52.97    |
| Canarias              | 100.00 | 3.12      | 0.17   | -                | -               | 51.14    | 0.26      | 1.35            | 0.04               | 21.37    |
| Cantabria             | 100.00 | 6.69      | 3.11   | 1.35             | 1.05            | 1.38     | 2.64      | 5.50            | 2.36               | 18.62    |
| Castilla y León       | 100.00 | 6.51      | 1.24   | 2.36             | 0.25            | 0.62     | 1.72      | 8.42            | 2.72               | 16.04    |
| Castilla-La Mancha    | 100.00 | 5.33      | 1.16   | 0.78             | 0.17            | 0.16     | 0.19      | 0.89            | 14.50              | 11.17    |
| Cataluña              | 100.00 | 1.38      | 0.59   | -                | 0.05            | 0.04     | -         | 0.25            | 0.34               | 83.77    |
| Comunitat Valenciana  | 100.00 | 2.17      | 1.33   | 0.20             | 0.45            | 0.14     | 0.92      | 0.64            | 5.61               | 14.27    |
| Extremadura           | 100.00 | 12.06     | 0.32   | 0.56             | 0.32            | 0.52     | 0.52      | 1.55            | 3.27               | 15.10    |
| Galicia               | 100.00 | 10.76     | 1.19   | 0.78             | 0.38            | 1.71     | 1.24      | 2.11            | 2.47               | 17.40    |
| Madrid (C. de)        | 100.00 | 2.19      | 0.31   | 0.46             | -               | 0.20     | 0.94      | 3.33            | 2.34               | 4.25     |
| Murcia (Región de)    | 100.00 | 2.35      | -      | 0.27             | 1.15            | -        | -         | 0.46            | 4.65               | 8.65     |
| Navarra (C. Foral de) | 100.00 | 3.95      | 1.44   | 1.38             | -               | 1.58     | -         | -               | 3.39               | 29.23    |
| País Vasco            | 100.00 | 4.87      | 3.21   | 0.39             | 0.71            | 0.78     | 0.45      | 2.47            | 1.26               | 47.03    |
| Rioja (La)            | 100.00 | 8.14      | 3.52   | -                | 1.21            | 1.21     | 1.71      | 5.68            | 0.60               | 15.62    |
| Ceuta y Melilla       | -      | -         | -      | -                | -               | -        | -         | -               | -                  | -        |

(conclusion)

| Origin \ Destination  | Comunitat Valenciana | Extremadura | Galicia | Madrid (C. de) | Murcia (Región) | Navarra (C. Foral) | País Vasco | Rioja (La) | Ceuta y Melilla |
|-----------------------|----------------------|-------------|---------|----------------|-----------------|--------------------|------------|------------|-----------------|
| TOTAL                 | 13.97                | 1.45        | 2.00    | 24.02          | 3.59            | 1.21               | 5.27       | 0.40       | 0.08            |
| Andalucía             | 8.58                 | 0.43        | 0.39    | 12.10          | 4.22            | 0.44               | 4.92       | 0.10       | 0.34            |
| Aragón                | 23.32                | 0.51        | 0.70    | 13.94          | 3.18            | 1.39               | 3.55       | 0.16       | -               |
| Asturias (P. de)      | 14.06                | 1.36        | 1.87    | 37.64          | 1.82            | 1.65               | 5.43       | 0.51       | -               |
| Balears (Illes)       | 6.59                 | -           | 0.92    | 18.99          | -               | 0.28               | 2.18       | 0.11       | 1.68            |
| Canarias              | 1.89                 | -           | 1.34    | 18.33          | 0.10            | -                  | 0.90       | -          | -               |
| Cantabria             | 9.92                 | 0.87        | 1.72    | 34.58          | 2.23            | 1.72               | 4.94       | 1.32       | -               |
| Castilla y León       | 9.01                 | 1.61        | 2.61    | 33.84          | 3.94            | 1.19               | 7.54       | 0.36       | 0.02            |
| Castilla- La Mancha   | 31.29                | 0.14        | 0.71    | 21.14          | 9.27            | 0.02               | 2.65       | 0.33       | 0.09            |
| Cataluña              | 3.29                 | 0.26        | -       | 5.31           | 1.87            | 0.31               | 2.25       | 0.29       | -               |
| Comunitat Valenciana  | 62.75                | 0.17        | 0.56    | 8.81           | 0.81            | -                  | 0.99       | -          | 0.20            |
| Extremadura           | 9.41                 | 19.76       | 0.64    | 23.79          | 2.50            | 0.09               | 9.58       | -          | -               |
| Galicia               | 11.65                | 0.85        | 13.46   | 27.90          | 1.99            | 0.94               | 4.94       | 0.19       | 0.04            |
| Madrid (C. de)        | 5.16                 | 0.89        | 0.36    | 77.35          | 0.64            | 0.30               | 1.01       | -          | 0.25            |
| Murcia (Región de)    | 25.03                | 1.42        | -       | 12.04          | 39.44           | 1.53               | 3.02       | -          | -               |
| Navarra (C. Foral de) | 13.94                | 2.31        | 1.78    | 18.82          | 1.30            | 6.07               | 14.81      | -          | -               |
| País Vasco            | 9.00                 | 0.33        | 0.86    | 15.52          | 1.02            | 1.52               | 9.55       | 0.70       | 0.32            |
| Rioja (La)            | 17.03                | 0.10        | 2.81    | 29.63          | 1.86            | 1.66               | 6.78       | 2.46       | -               |
| Ceuta y Melilla       | -                    | -           | -       | -              | -               | -                  | -          | -          | -               |

## 9. Travellers and overnight stays by country of residence

| Results by countries<br>Countries       | Travellers |        | Overnight stays |        |
|---|------------|--------|-----------------|--------|
|   | Total      | %      | Total           | %      |
| TOTAL                                   | 360,215    | 100.00 | 1,706,400       | 100.00 |
| Residents Spain                         | 318,941    | 88.54  | 1,451,084       | 85.04  |
| Residents abroad                        | 41,274     | 11.46  | 255,316         | 14.96  |
| Total Residents abroad                  | 41,274     | 100.00 | 255,316         | 100.00 |
| Total Residents in UE (excluding Spain) | 38,138     | 92.40  | 240,717         | 94.28  |
| - Germany                               | 8,854      | 21.45  | 65,058          | 25.48  |
| - Belgium                               | 2,080      | 5.04   | 12,951          | 5.07   |
| - France                                | 11,243     | 27.24  | 72,160          | 28.26  |
| - Italy                                 | 3,097      | 7.50   | 9,603           | 3.76   |
| - Netherlands                           | 2,546      | 6.17   | 16,577          | 6.49   |
| - Portugal                              | 1,503      | 3.64   | 7,493           | 2.93   |
| - United Kingdom                        | 7,335      | 17.77  | 46,496          | 18.21  |
| Sweden                                  | 545        | 1.32   | 2,978           | 1.17   |
| Other European countries                | 1,782      | 4.32   | 12,055          | 4.72   |
| United States of America                | 847        | 2.05   | 3,475           | 1.36   |
| Other countries                         | 1,442      | 3.49   | 6,469           | 2.53   |

## Tourist Campsite Price Index (TCSPI)

**August 2008**

Provisional data

### National general index and breakdown by rates

|  | Index  | Interannual<br>variation rate |
|--|--------|-------------------------------|
| TOTAL  | 139.38 | 4.24                          |
| Normal rate                                  | 142.04 | 4.52                          |
| Special rate for stays up to one month       | 97.26  | 6.26                          |
| Special rate for stays longer than one month | 135.03 | 1.84                          |

### National general index and breakdown by categories

|                  | Index  | Interannual<br>variation rate |
|------------------|--------|-------------------------------|
| TOTAL            | 139.38 | 4.24                          |
| Luxury and first | 143.14 | 2.07                          |
| Second           | 137.60 | 6.20                          |
| Third            | 130.07 | 4.46                          |

## HOLIDAY DWELLING PRICE INDEX (HDPI)

**August 2008**

Provisional data

### **National general index and breakdown by rates**

|                                    | Index  | Interannual<br>variation rate |
|------------------------------------|--------|-------------------------------|
| <b>TOTAL</b>                       | 130.26 | 7.05                          |
| Normal                             | 128.66 | 5.46                          |
| Weekend                            | 121.64 | 3.44                          |
| Tour-operators and travel agencies | 132.63 | 8.81                          |

### **National general index and breakdown by modalities**

|                         | Index  | Interannual<br>variation rate |
|-------------------------|--------|-------------------------------|
| <b>TOTAL</b>            | 130.26 | 7.05                          |
| Studio                  | 131.01 | 7.37                          |
| Dwellings 2/4 bedplaces | 129.82 | 7.73                          |
| Dwellings 4/6 bedplaces | 130.94 | 5.64                          |



## Rural Tourism Accommodation Price Index (RTAPI)

**August 2008**

Provisional data

### National general index and breakdown by rates

|         | Index  | Variation Rate<br>interannual |
|---------|--------|-------------------------------|
| TOTAL   | 131.39 | 3.79                          |
| Normal  | 131.09 | 3.65                          |
| Weekend | 132.90 | 4.50                          |

### National general index and breakdown by rent modality

|  | Index  | Variation Rate<br>interannual |
|--|--------|-------------------------------|
| TOTAL  | 131.39 | 3.79                          |
| Shared use (in case of per room rent modality) | 126.11 | 3.89                          |
| Full use (rent of entire dwelling)             | 134.23 | 3.74                          |