

27 September 2018

Non-hotel Tourist Accommodation Occupancy Survey
August 2018. *Provisional data*

Overnight stays in non-hotel tourist accommodation decrease by 2.4% in August, as compared with the same month of 2017

Overnight stays in non-hotel tourist accommodation (apartments, tourist campsites, rural tourism accommodation and hostels) exceeded 24.9 million in August, 2.4% less than in the same month of 2017. Overnight stays by residents decreased by 0.4% and those by non-residents did so by 4.3%.

The average stay stood at 5.6 overnight stays per traveller.

During the aggregate July-August period, the number of overnight stays fell 3.1% compared with the same period in 2017. Resident overnight stays decreased by 1.3% and non-resident overnight stays did so by 4.7%.

During the first eight months of 2018, overnight stays decreased by 3.0% as compared with the same period of the previous year.

Travellers and overnight stays in collective non-hotel tourist accommodation during the month of August were:

August 2018	Arrivals	Overnight stays
Residents	2,675,907	12,924,871
EU Residents (excluding Spain)	1,571,238	11,162,862
Rest of the world	192,917	891,268
TOTAL	4,440,062	24,979,001

Holiday dwellings

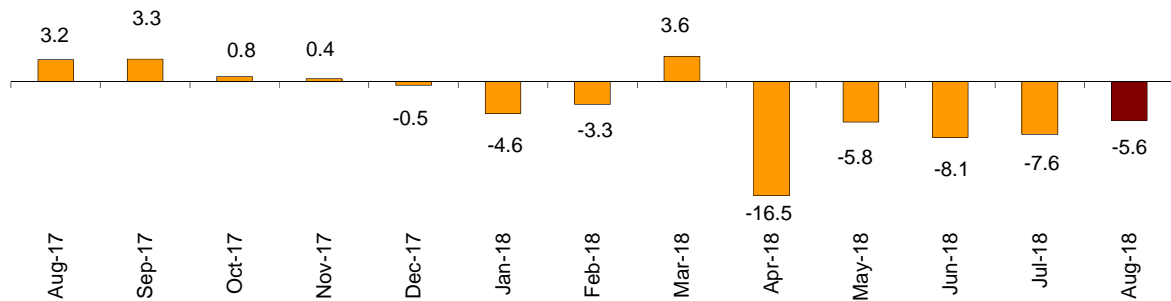
Overnight stays in holiday dwellings decreased by 5.6% in August. Resident overnight stays decreased by 3.1% and non-resident overnight stays did so by 7.1%.

The average stay decreased by 5.3% as compared with August 2017, standing at 6.7 overnight stays per traveller.

In the months of July and August as a whole, overnight stays in holiday dwellings fell by 6.6% compared with the same two-month period in 2017.

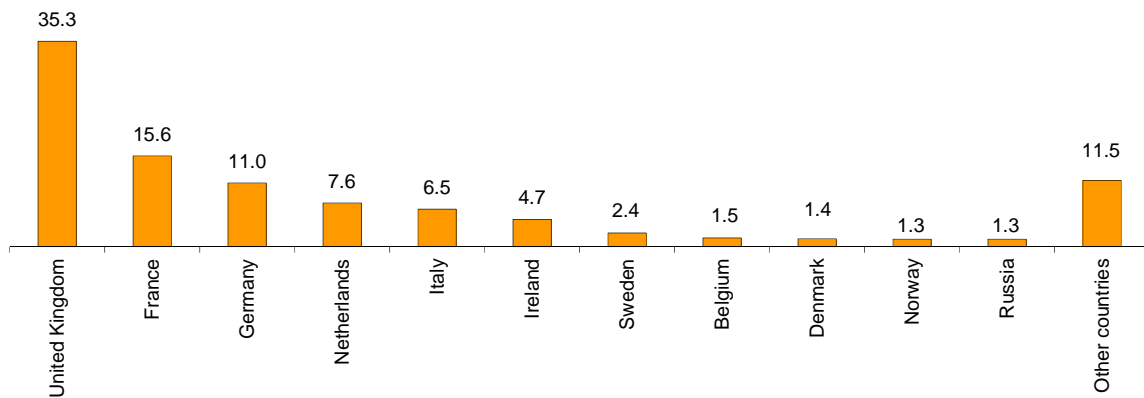
In August, 58.1% of the bed-places available for holiday dwellings were occupied, 3.1% less than in the same month of 2017. The weekend occupancy rate by bed-places stood at 59.1%, with a decrease of 5.4%.

Annual variation rates for overnight stays in holiday dwellings in %



Non-resident overnight stays in holiday dwellings represented 62.3% of the total. The United Kingdom was the main country of origin, with more than 2.5 million overnight stays, that is, 9.9% less than in August 2017. The following country of origin was France, with 1.1 million overnight stays, 8.2% less.

Distribution of non-resident overnight stays by main country of residence



Canarias was the preferred destination for holiday dwellings, with more than three million overnight stays, and a decrease of 6.5% as compared with August 2017. Cantabria and Illes Balears reached the highest occupancy rate, with 88.6% and 87.6% of holiday dwellings offered, respectively.

By tourist area, the Costa Blanca was the preferred destination, with 1.3 million overnight stays. The island of Mallorca registered the highest occupancy rate, with 89.4% of the holiday dwellings offered.

The tourist sites with the greatest number of overnight stays in August were San Bartolomé de Tirajana, Arona and Benidorm.

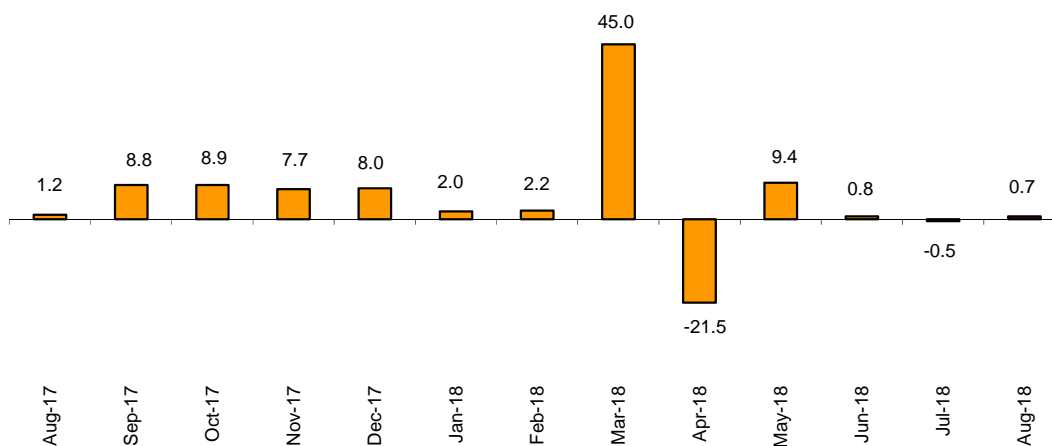
Tourist campsites

Overnight stays at tourist campsites registered an increase of 0.7% in August as compared with the same month of the previous year. Overnight stays by residents increased by 1.8% while those by non-residents decreased by 1.0%. During the July-August period, overnight stays increased by 0.2%.

During the month of August, 56.4% of the offered pitches were occupied, 0.8% less than in the same month of 2017. The weekend occupancy rate by pitch reached 59.8%, with an annual decrease of 2.3%.

38.1% of overnight stays on tourist campsites were made by non-residents. France was the main country of origin, with 34.8% of overnight stays by non-residents, 2.7% more than in August 2017.

Annual variation rates for overnight stays in campsites in %



Cataluña was the preferred destination for tourist campsites, with more than 5.1 million overnight stays, representing a decrease of 2.2% in the annual rate. La Rioja and País Vasco reached the highest occupancy rate, with 75.2% and 75.1% of the pitches offered, respectively.

By tourist area, the Costa Brava was the preferred destination, with 2.5 million overnight stays. Costa Blanca reached the highest occupancy rate, with 76.1% of pitches offered.

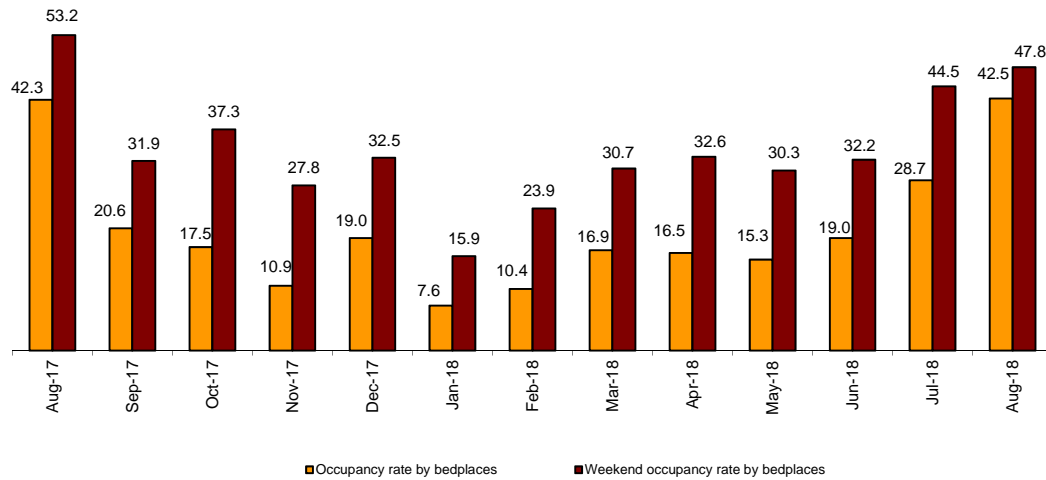
The tourist sites with more overnight stays were Torroella De Montgrí, Mont-Roig del Camp and Calonge.

Rural tourism accommodation

Overnight stays in rural tourism accommodation presented an annual increase of 2.2% in August. Overnight stays by residents dropped by 1.1%, whilst those by non-residents increased by 12.1%. During the July-August period, overnight stays increased by 1.3%.

In rural tourism accommodation, 42.5% of the bed-places were occupied, with a 0.5% increase as compared to August 2017. The weekend occupancy rate stood at 47.8%, with an annual decrease of 10.2%.

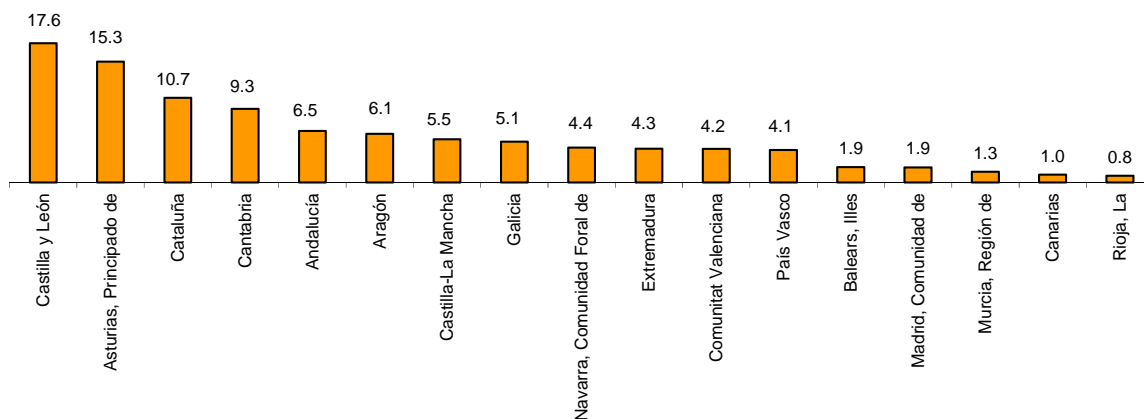
Occupancy rate and weekend occupancy rate per bed-places in rural tourism accommodation



By Autonomous Community, Castilla y León was the preferred destination, with 324,182 overnight stays, 10.0% more than August 2017. Illes Balears reached the highest occupancy rate, with 68.6% of the bed-places offered.

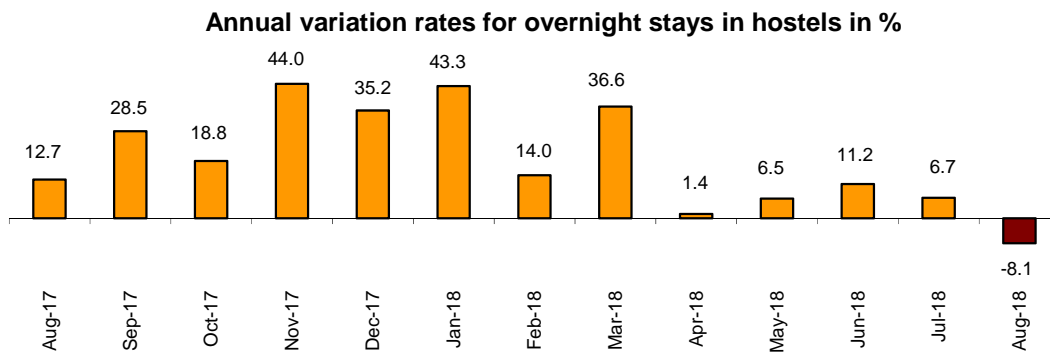
By tourist area, the island of Mallorca was the preferred destination, with 169,861 overnight stays. Costa de Gipuzkoa registered the highest occupancy rate, with 82.0% of the bed-places offered.

Distribution of resident overnight stays in rural tourism accommodation by Autonomous Community in %

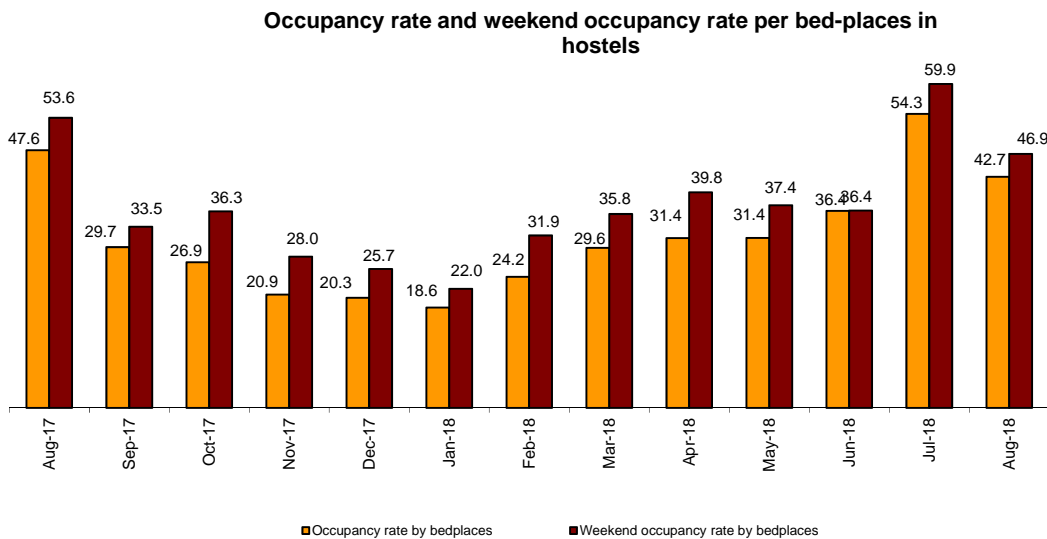


Youth Hostels

Overnight stays in hostels registered an annual decrease of 8.1% in August. Resident overnight stays decreased by 6.4% and non-resident overnight stays did so by 12.0%. During the July-August period, overnight stays decreased by 0.1%.



42.7% of the available bed-places were occupied, 10.3% less than in August 2017. The weekend occupancy rate reached 46.9%, with a 12.5% decrease.



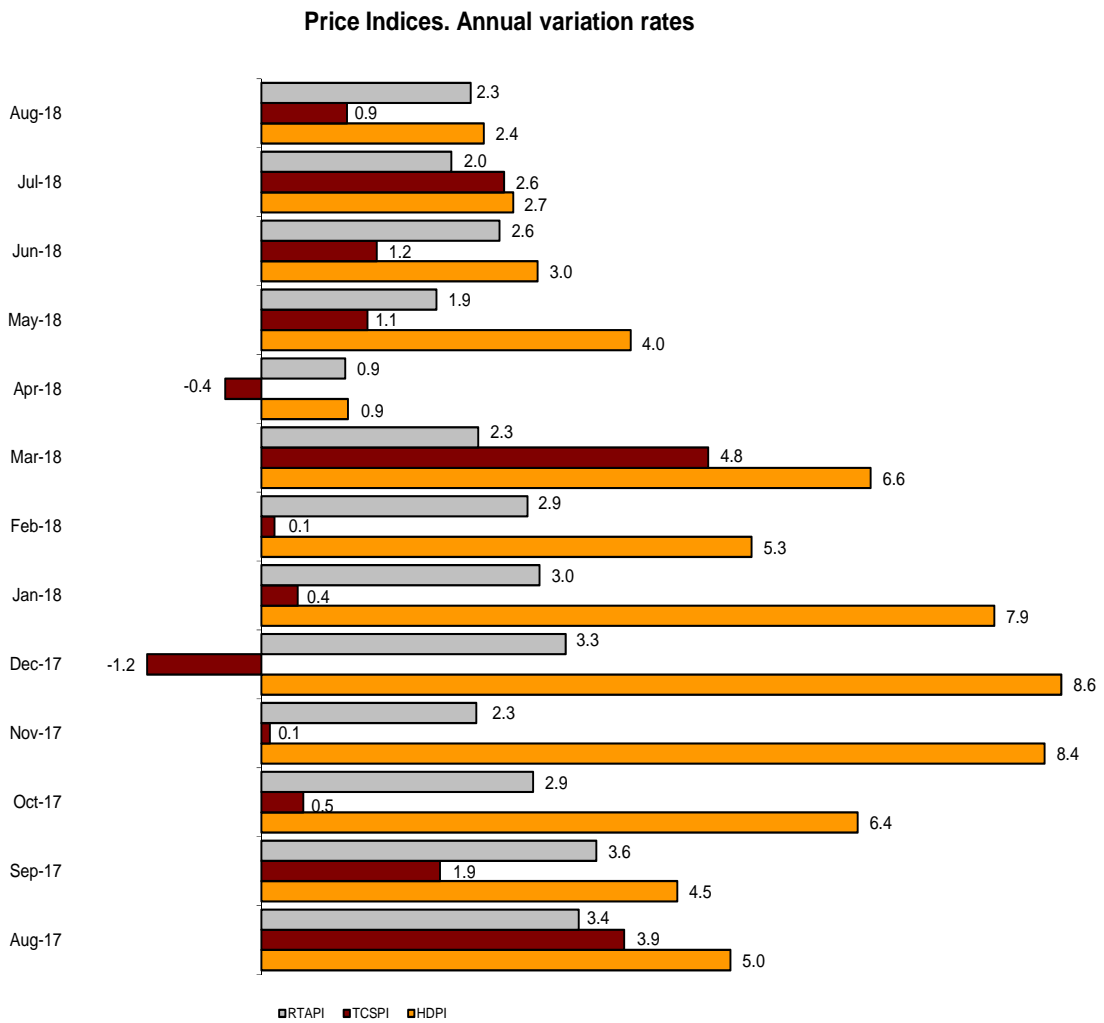
By Autonomous Community, Cataluña was the preferred destination, with 121,005 overnight stays, 4.4% less than in August 2017. País Vasco reached the highest occupancy rate, with 57.3% of the bed-places offered.

Price indices

The Holiday Dwelling Price Index (HDPI) increased 2.4%, as compared to August 2017. The *normal* rate, which carried the greatest weight in the weighting structure this month (50.3%), rose 0.1%.

The Tourist Campsite Price Index (TCPI) increased by 0.9% in the annual rate. The *bungalow* rate, which carried the greatest weight in the weightings structure in August (50.2%), decreased by 1.7% as compared with the same month of 2017.

The Rural Tourism Accommodation Price Index (RTAPI) registered a 2.3% increase in August. The *normal* rate, which accounted for 64.6% of the total weight, increased by 2.1% in the annual rate.



Evolution of travellers and overnight stays in all Spanish collective tourist accommodation

In August, overnight stays in Spanish collective tourist accommodations (hotels¹, holiday dwellings, tourist campsites, rural tourism accommodation and youth hostels) decreased by 1.2% in the annual rate. Overnight stays by residents increased by 1.4% while those by non-residents decreased by 3.1%. During the July-August period, overnight stays decreased by 1.9%.

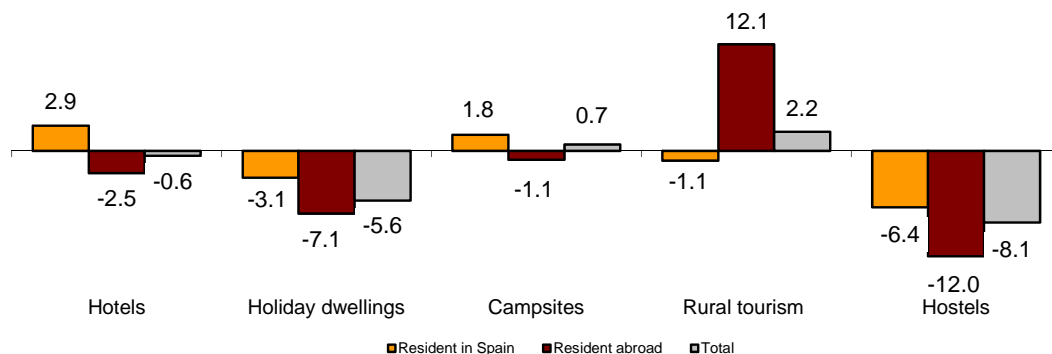
The average stay decreased 2.6%, standing at 4.2 overnight stays per traveller.

Travellers and overnight stays in collective tourist accommodation were:

August 2018	Holiday dwellings	Campsites	Rural T.	Hostels	Non-hotel	Hotels	Total
Arrivals	1,750,427	1,957,043	613,097	119,494	4,440,061	12,523,973	16,964,034
Residents	782,468	1,347,583	472,216	73,640	2,675,907	6,188,978	8,864,885
Non-residents	967,959	609,460	140,881	45,855	1,764,155	6,334,994	8,099,149
Overnight stays	11,677,219	10,627,234	2,299,329	375,221	24,979,003	46,393,669	71,372,672
Residents	4,407,947	6,580,505	1,670,667	265,752	12,924,871	17,552,277	30,477,148
Non-residents	7,269,272	4,046,728	628,662	109,468	12,054,130	28,841,392	40,895,522

Of the total overnight stays made in collective tourist accommodation, 65% corresponded to hotels and 35% to non-hotel tourist accommodation.

Annual variation rates for overnight stays in collective tourist accommodation in %



The main countries of origin for all regulated tourist accommodation were the United Kingdom (with 25.7% of the total number of non-resident overnight stays), Germany (16.1%) and France (15.0%).

Cataluña was the preferred destination, with over 15.6 million overnight stays (3.9% less than in August 2017). It was followed by Illes Balears, with 13.2 million overnight stays (an increase of 0.5%) and Andalucía, with 10.2 million, (an annual increase of 2.9%).

For further information see **INEbase**: www.ine.es/en/ Twitter: @es_ine

All press releases at: www.ine.es/en/prensa/prensa_en.htm

Press office: Telephone numbers: (+34) 91 583 93 63 /94 08 – gprensa@ine.es

Information Area: Telephone number: (+34) 91 583 91 00 – www.ine.es/infoine/?L=1

¹ The press release corresponding to Hotel Tourism Short-Term Trends was published on 24 September.

Tourist Accommodation Occupancy Survey (Holiday Dwellings)

August 2018

Provisional data

1. Travellers, overnight stays and average stay by Autonomous Cities and Communities

Autonomous Cities and Communities	Travellers			Overnight stays			Average stay
	Total	Residents in Spain	Residents abroad	Total	Residents in Spain	Residents abroad	
TOTAL	1.750.427	782.468	967.959	11.677.219	4.407.947	7.269.272	6,67
Andalucía	335.495	179.596	155.899	1.674.563	837.526	837.037	4,99
Aragón	26.181	21.640	4.541	111.194	93.571	17.624	4,25
Asturias, Principado de	17.150	15.720	1.430	90.817	84.784	6.033	5,30
Balears, Illes	284.954	40.687	244.267	2.044.352	221.832	1.822.520	7,17
Canarias	369.784	106.001	263.783	3.045.912	587.773	2.458.139	8,24
Cantabria	32.182	28.256	3.926	146.655	130.131	16.524	4,56
Castilla y León	27.210	23.072	4.138	78.993	70.283	8.710	2,90
Castilla - La Mancha	14.911	13.668	1.242	54.335	49.792	4.543	3,64
Cataluña	197.794	72.692	125.103	1.423.572	464.800	958.772	7,20
Comunitat Valenciana	307.990	190.208	117.782	2.395.280	1.436.336	958.945	7,78
Extremadura	13.114	11.755	1.359	31.040	28.609	2.431	2,37
Galicia	27.552	23.270	4.282	119.062	105.296	13.766	4,32
Madrid, Comunidad de	40.062	17.889	22.173	141.078	62.810	78.268	3,52
Murcia, Región de	20.872	16.125	4.747	178.304	140.861	37.443	8,54
Navarra, Comunidad Foral de	12.913	8.508	4.405	48.189	35.585	12.604	3,73
País Vasco	18.225	9.845	8.380	78.688	44.270	34.418	4,32
Rioja, La	4.038	3.537	500	15.183	13.687	1.495	3,76
Ceuta	-	-	-	-	-	-	-
Melilla	-	-	-	-	-	-	-
Annual rate	-0,32	3,93	-3,51	-5,63	-3,05	-7,13	-5,33
Cumulative annual rate	-3,27	-1,06	-4,56	-6,43	-4,41	-7,17	-3,27

2. Capacity, occupancy and number of staff by Autonomous Cities and Communities

Autonomous Cities and Communities	Capacity		Level of occupancy				Employed personnel
	Estimated bedplaces	Estimated Holiday dwelling	Per bedplaces	Per bedplaces at weekend	Per Holiday dwelling	Per Holiday dwelling at weekend	
TOTAL	635.384	161.897	58,14	59,05	74,93	75,98	35.516
Andalucía	86.805	21.742	61,62	62,90	77,25	78,94	5.343
Aragón	9.297	2.161	38,44	41,27	49,24	51,51	589
Asturias, Principado de	5.439	1.461	53,42	55,68	62,05	65,24	447
Balears, Illes	80.048	25.643	77,88	78,05	87,60	87,59	7.133
Canarias	147.263	44.985	65,19	66,44	80,05	81,55	11.335
Cantabria	6.740	1.743	69,35	69,56	88,57	89,34	508
Castilla y León	6.317	1.432	40,09	46,58	55,00	60,79	594
Castilla - La Mancha	5.671	1.384	30,79	38,44	42,04	50,22	453
Cataluña	87.427	18.103	52,12	52,36	71,95	72,32	2.428
Comunitat Valenciana	162.308	32.945	47,45	47,80	64,20	64,49	4.053
Extremadura	1.934	470	51,47	57,67	66,74	72,71	202
Galicia	6.206	1.564	61,04	62,34	76,29	76,96	457
Madrid, Comunidad de	10.051	3.847	45,03	47,85	61,12	64,04	643
Murcia, Región de	11.117	2.462	51,65	50,72	68,97	68,52	366
Navarra, Comunidad Foral de	2.834	514	54,60	59,40	76,43	79,76	598
País Vasco	4.385	1.115	57,40	58,31	79,48	80,59	254
Rioja, La	1.542	327	31,74	39,34	49,60	57,55	111
Ceuta	-	-	-	-	-	-	-
Melilla	-	-	-	-	-	-	-
Annual rate	-2,87	-3,17	-3,12	-5,44	-1,89	-3,74	-1,11
Cumulative annual rate	-0,49	0,52	-5,88	-6,15	-5,69	-5,91	0,58

3. Travellers, overnight stays, capacity, occupancy, total number of staff with greater number of overnight stays *

Provinces	Travellers		Overnight stays			Capacity		Level of occupancy			Employed personnel
	Residents in Spain	Residents abroad	Residents in Spain	Residents abroad	Average stay	Estimated bed-places	Estimated holiday dwelling	Per bed-places	Per Holiday dwelling	Per Holiday dwelling at weekend	
Palmas, Las	65.149	165.695	378.207	1.573.623	8,46	93.762	28.436	65,39	82,11	83,41	7.120
Alicante\Alacant	84.034	86.108	637.394	734.656	8,06	94.859	19.549	46,53	60,08	60,77	2.718
Santa Cruz de Tenerife	40.852	98.089	209.566	884.516	7,87	53.501	16.549	64,83	76,49	78,33	4.215
Málaga	59.122	99.215	277.787	660.304	5,92	45.927	11.409	65,15	83,55	84,22	2.939
Girona	31.022	61.552	231.597	517.682	8,09	47.970	9.104	49,93	70,11	70,25	901
Valencia\València	39.445	20.692	391.696	127.625	8,64	33.565	7.008	49,81	67,70	66,38	748
Castellón\Castelló	66.729	10.982	407.246	96.664	6,48	33.885	6.388	47,71	72,98	73,81	587
Tarragona	28.284	39.906	167.163	328.610	7,27	26.815	5.428	59,45	84,83	84,90	874
Almería	38.030	5.594	215.555	40.886	5,88	13.225	2.998	61,91	81,22	82,52	552
Barcelona	6.610	23.111	38.272	108.953	4,95	9.734	2.919	47,79	58,92	60,05	558
Cádiz	20.078	6.732	108.291	28.506	5,10	6.489	1.666	67,57	79,89	81,76	456
Huelva	18.424	1.729	96.873	8.594	5,23	5.658	1.345	60,13	69,78	72,90	143
Sevilla	15.758	29.284	36.128	68.560	2,32	6.401	1.868	52,25	66,84	68,40	520
Granada	17.123	10.928	66.306	25.107	3,26	5.423	1.508	53,81	59,75	66,79	477
Huesca	11.835	1.938	58.265	8.091	4,82	5.766	1.300	36,98	44,83	46,26	326

4. Travellers, overnight stays, capacity, occupancy, total number of staff from tourist areas with greater number of overnight stays

Tourist Areas	Travellers		Overnight stays			Capacity		Level of occupancy			Employed personnel
	Residents in Spain	Residents abroad	Residents in Spain	Residents abroad	Average stay	Estimated bed-places	Estimated holiday dwelling	Per bed-places	Per Holiday dwelling	Per Holiday dwelling at weekend	
Costa Blanca	78.776	79.904	609.414	702.621	8,27	91.063	18.833	46,34	59,92	60,43	2.479
Isla de Mallorca	8.097	128.111	48.040	1.026.229	7,89	40.037	13.327	80,61	89,44	88,95	3.308
Isla de Tenerife	31.484	94.776	159.529	845.381	7,96	47.585	14.536	66,90	78,82	80,61	3.688
Isla de Gran Canaria	36.597	76.489	209.973	697.265	8,02	46.171	14.283	62,46	76,91	78,87	3.350
Costa del Sol	52.317	88.250	259.370	588.651	6,03	41.307	10.341	65,42	83,95	84,56	2.769
Isla de Lanzarote	16.295	63.383	103.762	620.682	9,09	32.420	9.539	68,90	87,46	88,07	2.588
Costa Brava	25.911	61.277	206.933	516.601	8,30	46.262	8.751	50,18	70,54	70,25	790
Islas de Ibiza-Formentera	16.387	72.921	74.875	442.552	5,79	22.197	7.398	72,58	82,08	82,77	2.549
Costa de Castellón	65.934	10.842	402.863	95.563	6,49	32.797	6.139	48,75	74,78	75,67	554
Costa Daurada	26.631	38.108	159.360	314.644	7,32	25.617	5.192	59,49	85,18	85,28	843

5. Travellers, overnight stays, capacity, occupancy, total number of staff from tourist sites with greater number at overnights stays

Tourist sites	Travellers		Overnight stays			Capacity		Level of occupancy			Employed personnel
	Residents in Spain	Residents abroad	Residents in Spain	Residents abroad	Average stay	Estimated bed-places	Estimated holiday dwelling	Per bed-places	Per Holiday dwelling	Per Holiday dwelling at weekend	
San Bartolomé de Tirajana	26.223	46.098	154.754	416.007	7,89	29.738	9.325	60,77	74,73	76,69	2.036
Arona	10.609	39.908	51.821	376.558	8,48	19.828	6.342	68,43	75,61	77,47	1.606
Benidorm	21.483	32.937	134.890	257.926	7,22	19.707	4.992	63,95	78,89	80,80	736
Tías	8.045	34.598	52.246	338.939	9,17	16.690	5.106	72,01	88,90	89,57	1.164
Mogán	7.567	28.358	44.610	270.030	8,76	15.345	4.523	65,63	81,71	83,49	1.196
Adeje	4.135	32.854	25.872	268.437	7,96	14.382	4.056	65,21	83,37	83,29	975
Ciudadella de Menorca	8.627	26.414	51.531	222.752	7,83	10.517	3.139	79,12	91,76	91,88	817
Alcúdia	1.654	31.942	12.504	259.265	8,09	8.856	3.254	91,28	92,28	91,63	983
Salou	13.239	26.693	59.772	184.634	6,12	13.426	2.746	58,67	86,10	85,97	324
Oropesa del Mar	43.139	4.033	204.318	28.898	4,94	21.182	3.318	35,45	70,66	73,03	235

* Provinces belonging to uniprovincial Autonomous Communities have not been included because they are reflected in previous tables.

6. Travellers and overnight stays by countries of residence

Countries	Travellers		Overnight stays	
	Total	%	Total	%
TOTAL	1.750.427	100,00	11.677.219	100,00
Residents in Spain	782.468	44,70	4.407.947	37,75
Residents abroad	967.959	55,30	7.269.272	62,25
Total residents abroad	967.959	100,00	7.269.272	100,00
Total residents in E.U (excluding Spain)	844.298	87,22	6.582.631	90,55
- Germany	91.039	9,41	798.695	10,99
- Austria	4.099	0,42	26.804	0,37
- Belgium	15.889	1,64	110.040	1,51
-Denmark	12.896	1,33	99.110	1,36
- Finland	2.730	0,28	15.914	0,22
- France	143.566	14,83	1.135.832	15,63
- Greece	678	0,07	3.398	0,05
- Ireland	40.606	4,19	342.412	4,71
- Italy	79.359	8,20	470.548	6,47
- Luxembourg	911	0,09	6.970	0,10
- Netherlands	64.003	6,61	549.683	7,56
- Poland	12.619	1,30	85.221	1,17
- Portugal	19.296	1,99	94.405	1,30
- United Kingdom	319.613	33,02	2.566.004	35,30
- Czech Republic	2.873	0,30	21.081	0,29
- Sweden	19.794	2,04	173.220	2,38
- Other EU countries	14.328	1,48	83.294	1,15
Norway	11.174	1,15	96.424	1,33
Russia	11.752	1,21	94.938	1,31
Switzerland	7.569	0,78	51.618	0,71
Other european countries	9.784	1,01	61.912	0,85
United States of America	13.788	1,42	48.753	0,67
Rest of America	17.586	1,82	71.872	0,99
African countries	19.515	2,02	113.041	1,56
Other countries	32.492	3,36	148.083	2,04

Tourist Accommodation Occupancy Survey Campsite Occupancy Survey (COS)

August 2018

Provisional data

1. Travellers, overnight stays and average stay by category of establishment

Category	Travellers			Overnight stays			Average stay
	Total	Residents	Residents	Total	Residents	Residents	
		in Spain	abroad		in Spain	abroad	
TOTAL	1.957.043	1.347.583	609.460	10.627.234	6.580.505	4.046.728	5,43
Luxury and first-class	862.526	579.421	283.104	4.972.386	2.855.387	2.116.999	5,76
Second-class	904.292	626.240	278.052	4.674.423	3.010.764	1.663.658	5,17
Third-class	190.226	141.922	48.303	980.425	714.354	266.071	5,15
Annual rate	1,29	2,67	-1,65	0,73	1,84	-1,01	-0,55
Cumulative annual rate	-1,34	-2,60	1,23	1,02	-0,27	2,53	2,39

2. Open establishments, capacity, occupancy and number of staff by category of establishments

Category	Estimated open establishments	Capacity		Occupied pitches	Occupancy rate per pitch	Weekend occupancy rate	Employed personnel
		Estimated bedplaces	Estimated pitches				
TOTAL	1.183	761.827	232.287	4.060.897	56,39	59,81	13.837
Luxury and first-class	296	318.653	93.786	1.726.675	59,39	62,17	6.178
Second-class	652	358.628	112.509	1.909.764	54,76	59,02	6.273
Third-class	234	84.546	25.992	424.458	52,68	54,70	1.387
Annual rate	-0,19	1,17	0,68	-0,09	-0,77	-2,33	2,67
Cumulative annual rate	-0,48	0,35	-0,12	0,58	0,65	-0,84	2,30

3. Travellers, overnight stays and average stay by Autonomous Cities and Communities

Autonomous cities and communities	Travellers			Overnight stays			Average stay
	Total	Residents	Residents	Total	Residents	Residents	
		in Spain	abroad		in Spain	abroad	
TOTAL	1.957.043	1.347.583	609.460	10.627.234	6.580.505	4.046.728	5,43
Andalucía	229.708	194.383	35.325	957.096	819.150	137.946	4,17
Aragón	113.071	78.209	34.862	417.669	300.672	116.997	3,69
Asturias, Principado de	86.974	64.342	22.631	352.964	288.878	64.086	4,06
Balears, Illes	15.526	8.457	7.069	82.473	32.989	49.484	5,31
Canarias	4.786	4.417	369	19.975	15.442	4.533	4,17
Cantabria	90.855	62.468	28.387	488.756	396.409	92.347	5,38
Castilla y León	93.348	70.329	23.020	269.946	232.267	37.679	2,89
Castilla - La Mancha	30.044	27.108	2.936	102.155	96.828	5.327	3,40
Cataluña	737.877	420.920	316.957	5.191.589	2.334.668	2.856.921	7,04
Comunitat Valenciana	187.103	146.277	40.826	1.334.177	923.387	410.789	7,13
Extremadura	26.401	23.843	2.558	88.776	83.479	5.298	3,36
Galicia	119.475	87.550	31.925	441.104	361.851	79.253	3,69
Madrid, Comunidad de	42.150	36.889	5.261	179.051	165.123	13.928	4,25
Murcia, Región de	26.008	22.325	3.683	167.173	127.999	39.174	6,43
Navarra, Comunidad Foral de	36.814	27.093	9.721	156.939	136.136	20.804	4,26
País Vasco	74.932	36.132	38.799	234.995	129.684	105.311	3,14
Rioja, La	41.974	36.843	5.131	142.395	135.543	6.852	3,39
Ceuta	-	-	-	-	-	-	-
Melilla	-	-	-	-	-	-	-

4. Open establishments, capacity, occupancy and number of staff by autonomous cities and communities

Autonomous cities and communities	Estimated open establishments	Capacity		Occupied pitches	Occupancy rate per pitch	Weekend occupancy rate	Employed personnel
		Estimated bedplaces	Estimated pitches				
TOTAL	1.183	761.827	232.287	4.060.897	56,39	59,81	13.837
Andalucía	140	81.360	26.383	364.639	44,58	50,39	1.420
Aragón	100	33.201	10.055	159.504	51,17	56,60	723
Asturias, Principado de	51	27.501	8.361	144.741	55,84	59,88	415
Balears, Illes	8	3.177	1.398	26.223	60,49	63,50	127
Canarias	7	7.336	1.815	11.650	20,71	25,40	36
Cantabria	48	35.001	11.089	192.896	56,12	57,27	435
Castilla y León	96	40.094	12.955	134.180	33,41	37,74	467
Castilla - La Mancha	30	11.464	3.448	39.673	37,12	46,67	180
Cataluña	339	324.239	94.750	1.871.848	63,73	66,08	6.345
Comunitat Valenciana	130	81.384	25.307	515.871	65,76	68,21	1.565
Extremadura	25	9.850	3.172	39.951	40,62	49,05	225
Galicia	112	38.452	12.331	173.473	45,38	49,19	755
Madrid, Comunidad de	20	18.003	6.115	113.801	60,03	56,17	292
Murcia, Región de	16	14.538	4.783	63.302	42,70	48,69	253
Navarra, Comunidad Foral de	25	14.753	3.890	59.295	49,17	60,14	234
País Vasco	27	13.383	3.973	92.482	75,09	82,58	271
Rioja, La	9	8.091	2.462	57.367	75,18	77,11	95
Ceuta	-	-	-	-	-	-	-
Melilla	-	-	-	-	-	-	-

5. Travellers and overnight stays, average stay, capacity, occupancy and number of staff by provinces with the greatest number of overnight stays*

Provinces	Travellers		Overnight stays		Average stay	Estimated open establishments	Estimated pitches	Occupancy rate per pitch	Employed personnel
	Residents in Spain	Residents abroad	Residents in Spain	Residents abroad					
	Girona	169.778	179.264	822.323					
Tarragona	135.266	75.081	906.804	672.024	7,51	65	25.456	70,86	1.618
Barcelona	76.710	52.941	376.736	339.052	5,52	77	16.895	59,35	894
Alicante\Alacant	56.467	19.666	350.429	292.563	8,45	50	11.546	71,31	742
Castellón\Castelló	39.725	9.367	328.617	70.037	8,12	43	7.191	63,59	435
Huesca	62.794	26.788	246.004	96.487	3,82	65	7.285	58,10	565
Cádiz	68.883	9.228	286.996	30.920	4,07	30	7.128	52,92	431
Valencia\València	50.084	11.794	244.341	48.190	4,73	37	6.570	58,38	388
Pontevedra	54.750	16.344	221.698	45.236	3,75	46	6.293	49,15	418
Lleida	39.166	9.671	228.805	29.424	5,29	59	7.723	52,79	314
Málaga	29.087	7.640	133.852	52.653	5,08	29	4.900	51,52	271
Huelva	34.352	2.581	162.297	9.389	4,65	10	4.776	40,26	219
Gipuzkoa	26.241	27.860	88.950	81.701	3,15	16	2.610	76,13	151
Coruña, A	23.377	11.645	116.735	27.314	4,11	47	4.441	44,72	248
Almería	21.200	4.075	82.625	16.229	3,91	19	2.788	47,59	172

*Provinces belonging to uniprovincial Autonomous Communities have not been included because they are reflected in previous tables.

6. Travellers, overnight stays, average stay, open establishments, capacity, occupancy and number of staff from tourist areas with the greatest number of overnight stays

Tourist areas	Travellers		Overnight stays		Average stay	Estimated open establishments	Estimated pitches	Occupancy rate per pitch	Employed personnel
	Residents in	Residents abroad	Residents in	Residents abroad					
	Spain		Spain						
Costa Brava	137.949	177.174	705.439	1.807.445	7,97	103	40.446	64,14	3.305
Costa Daurada	113.639	69.496	779.735	629.017	7,69	51	22.510	71,47	1.431
pn Aiguamolls de l'Empordá	22.967	51.504	124.984	545.949	9,01	22	10.216	68,77	1.080
Costa Barcelona	53.828	51.699	269.804	334.911	5,73	47	13.222	61,08	608
Costa Blanca	46.864	16.673	289.626	253.942	8,56	41	9.155	76,07	666
Pirineus	75.985	10.973	365.077	34.754	4,60	99	12.890	53,45	702
Costa de Castellón	35.647	8.675	301.428	68.170	8,34	33	6.284	66,75	394
Pirineo Aragonés	62.232	27.581	243.964	99.965	3,83	60	6.957	59,07	556
Rías Baixas	69.105	19.073	266.296	51.133	3,60	58	7.995	46,98	532
Costa de la Luz (Cádiz)	66.776	8.470	281.898	29.253	4,14	25	6.454	56,36	403
Costa Verde	53.331	17.330	256.531	51.733	4,36	42	7.242	56,83	370
Costa Valencia	37.984	8.675	199.534	37.388	5,08	20	4.493	65,85	263
Terres de l'Ebre	21.627	5.585	127.069	43.007	6,25	14	2.947	66,17	186
Costa de la Luz (Huelva)	33.066	2.415	159.178	7.898	4,71	8	4.631	40,02	209
Costa del Sol	23.229	4.819	120.205	45.115	5,89	14	3.664	58,65	206

7. Travellers, overnight stays, average stay, open establishments, capacity, occupancy and number of staff from tourist sites with the greatest number at overnights stays

Tourist sites	Travellers		Overnight stays		Average stay	Estimated open establishments	Estimated pitches	Occupancy rate per pitch	Employed personnel
	Residents in	Residents abroad	Residents in	Residents abroad					
	Spain		Spain						
Torroella de Montgrí	15.602	24.639	105.485	274.647	9,45	9	4.738	78,69	449
Mont-roig del Camp	13.405	13.552	101.408	167.704	9,98	6	4.272	57,16	313
Calonge	10.449	15.685	63.333	188.530	9,64	5	3.331	71,63	263
Sant Pere Pescador	7.689	19.932	28.763	217.285	8,91	7	3.676	70,33	454
Benidorm	8.642	8.566	55.504	189.518	14,24	11	4.229	87,02	369
Pals	12.152	15.208	65.922	178.032	8,92	5	3.128	70,01	270
Castelló d'Empúries	7.108	14.852	56.105	172.283	10,40	5	3.436	71,70	395
Tarragona	21.112	7.459	157.298	69.452	7,94	7	3.053	84,25	302
Blanes	11.681	15.698	73.104	149.642	8,14	11	3.643	69,95	310
Salou	13.588	12.383	79.153	130.612	8,08	3	2.187	80,85	154
Cambrils	16.634	7.830	125.784	59.508	7,57	6	3.123	69,09	129
Noja	15.294	880	144.240	2.281	9,06	5	2.411	59,63	90

8. Travellers and overnight stays by countries of residence

Countries	Travellers		Overnight stays	
	Total	%	Total	%
TOTAL	1.957.043	100,00	10.627.234	100,00
Residents in Spain	1.347.583	68,86	6.580.505	61,92
Residents abroad	609.460	31,14	4.046.728	38,08
TOTAL residents abroad	609.460	100,00	4.046.728	100,00
TOTAL residents in E.U. (excluding Spain)	584.537	95,91	3.963.935	97,95
- Germany	82.517	13,54	424.716	10,50
- Austria	3.517	0,58	10.872	0,27
- Belgium	20.711	3,40	158.928	3,93
- Denmark	1.948	0,32	15.120	0,37
- Finland	300	0,05	1.853	0,05
- France	243.042	39,88	1.409.614	34,83
- Greece	404	0,07	844	0,02
- Ireland	10.493	1,72	107.263	2,65
- Italy	38.516	6,32	116.377	2,88
- Luxembourg	937	0,15	4.444	0,11
- Netherlands	84.541	13,87	1.100.896	27,20
- Poland	4.394	0,72	16.865	0,42
- Portugal	28.651	4,70	81.202	2,01
- United Kingdom	56.055	9,20	479.927	11,86
- Czech Republic	1.528	0,25	3.721	0,09
- Sweden	1.571	0,26	14.610	0,36
- Other EU countries	5.412	0,89	16.684	0,41
Norway	405	0,07	3.125	0,08
Russia	567	0,09	1.756	0,04
Switzerland	6.178	1,01	20.953	0,52
Other European countries	3.841	0,63	14.382	0,36
United States of America	1.148	0,19	3.349	0,08
Rest of America	3.449	0,57	10.450	0,26
African countries	828	0,14	3.562	0,09
Other countries	8.507	1,40	25.218	0,62

Tourist accommodation occupancy survey (Rural tourist accommodation)

August 2018

Provisional data

1. Number of travellers, overnight stays and average stay by Autonomous City and Community

Autonomous Communities	Number of travellers			Number of overnight stays			Average stay
	Total	Residents In Spain	Residents abroad	Total	Residents In Spain	Residents abroad	
TOTAL	613.097	472.216	140.881	2.299.329	1.670.667	628.662	3,75
Andalucía	53.442	32.206	21.236	255.116	108.662	146.454	4,77
Aragón	31.165	25.526	5.639	121.980	102.308	19.671	3,91
Asturias, Principado de	63.518	55.941	7.577	285.467	254.877	30.590	4,49
Balears, Illes	50.536	7.959	42.577	210.143	32.235	177.908	4,16
Canarias	6.972	4.177	2.795	35.537	16.165	19.371	5,10
Cantabria	50.922	45.527	5.395	171.862	154.802	17.060	3,37
Castilla y León	109.049	96.837	12.212	324.182	293.859	30.323	2,97
Castilla-La Mancha	30.948	29.127	1.822	98.147	91.181	6.966	3,17
Cataluña	58.388	41.763	16.626	280.728	178.609	102.119	4,81
Comunitat Valenciana	21.862	19.230	2.632	82.444	70.862	11.582	3,77
Extremadura	30.610	28.221	2.389	77.860	71.266	6.594	2,54
Galicia	40.166	30.766	9.400	108.070	85.785	22.285	2,69
Madrid, Comunidad de	14.982	13.604	1.377	36.331	31.572	4.758	2,43
Murcia, Región de	6.008	5.338	671	25.593	22.475	3.118	4,26
Navarra, Comunidad Foral de	15.638	13.815	1.823	82.670	73.426	9.244	5,29
País Vasco	24.190	17.998	6.192	88.185	68.494	19.691	3,65
Rioja, La	4.699	4.180	519	15.018	14.088	929	3,20
Ceuta	-	-	-	-	-	-	-
Melilla	-	-	-	-	-	-	-
Annual rate	5,98	3,96	13,33	2,18	-1,10	12,06	-3,58
Cumulative annual rate	3,91	1,59	13,13	2,70	-0,75	11,80	-1,17

2. Open rural establishments, bed-places, occupancy rates and employed personnel by Autonomous City and Community

Autonomous Communities	Estimated open rural establishments	Estimated bed-places	Occupancy rate			Employed personnel
			Of bed-places	Of bed-places at weekend	Of bedrooms	
TOTAL	17.596	172.107	42,48	47,76	50,90	27.453
Andalucía	2.373	19.767	41,38	46,22	51,28	3.582
Aragón	1.252	9.854	39,25	44,97	45,77	1.443
Asturias, Principado de	1.555	15.605	58,71	56,86	68,00	2.306
Balears, Illes	504	9.604	68,56	60,96	76,27	3.062
Canarias	522	3.207	35,57	36,69	49,48	737
Cantabria	497	8.205	64,91	67,61	74,70	930
Castilla y León	3.710	32.931	31,56	42,00	38,75	5.198
Castilla-La Mancha	1.656	14.425	21,88	35,62	26,63	2.128
Cataluña	2.036	18.246	49,01	51,17	59,01	2.706
Comunitat Valenciana	822	10.101	26,13	30,82	38,65	1.224
Extremadura	590	7.307	34,23	46,23	42,21	896
Galicia	529	6.796	50,29	53,65	53,69	1.036
Madrid, Comunidad de	227	3.623	32,20	48,43	45,47	544
Murcia, Región de	141	2.194	37,53	48,62	48,56	269
Navarra, Comunidad Foral de	689	4.952	53,18	52,94	60,79	813
País Vasco	378	4.178	64,85	64,33	71,41	457
Rioja, La	115	1.110	42,91	53,62	44,30	122
Ceuta	-	-	-	-	-	-
Melilla	-	-	-	-	-	-
Annual rate	1,23	1,81	0,52	-10,18	0,79	1,91
Cumulative annual rate	1,53	2,85	-0,20	-3,15	-0,64	5,24

3. Number of travellers, overnight stays and average stay in Provinces with the greatest number of overnight stays¹

Provinces	Number of travellers			Number of overnight stays			Average stay
	Total	Residents In Spain	Residents abroad	Total	Residents In Spain	Residents abroad	
Málaga	19.644	5.684	13.960	146.121	31.665	114.455	7,44
Girona	24.656	16.732	7.924	133.820	80.438	53.382	5,43
Huesca	19.773	15.138	4.635	79.720	63.305	16.415	4,03
Barcelona	14.684	9.550	5.134	69.822	39.703	30.119	4,76
Cáceres	25.034	23.318	1.716	65.051	60.556	4.495	2,60
Ávila	19.069	17.851	1.218	63.428	57.894	5.534	3,33
Gipuzkoa	13.052	9.651	3.401	50.602	38.662	11.940	3,88
Lleida	12.808	11.033	1.776	49.897	42.408	7.489	3,90
León	16.349	14.254	2.095	46.640	43.062	3.578	2,85
Burgos	16.580	12.548	4.032	44.047	37.312	6.735	2,66
Soria	10.103	9.448	655	38.690	36.679	2.010	3,83
Salamanca	13.286	11.937	1.348	37.631	32.498	5.134	2,83
Coruña, A	13.108	8.870	4.238	35.481	24.651	10.830	2,71
Pontevedra	10.157	7.963	2.194	33.998	27.574	6.424	3,35
Albacete	8.841	8.694	147	32.498	31.844	654	3,68

4. Open rural establishments, bed-places, occupancy rates and employed personnel in Provinces with the highest number of overnight stays¹

Provinces	Estimated open rural establishments	Estimated bed-places	Occupancy rate			Employed personnel
			Of bed-places	Of bed-places at weekend	Of bedrooms	
Málaga	1.350	9.160	51,21	49,89	63,62	1.924
Girona	682	7.004	60,76	62,70	70,13	804
Huesca	725	5.546	45,41	48,69	52,26	863
Barcelona	544	4.694	47,16	46,01	61,77	909
Cáceres	483	5.968	35,02	46,46	43,26	719
Ávila	798	6.249	32,56	49,52	39,54	971
Gipuzkoa	177	2.021	75,68	73,03	84,33	229
Lleida	550	4.203	38,01	43,24	45,80	659
León	491	3.989	37,49	37,09	44,36	749
Burgos	424	4.173	33,85	42,48	40,01	521
Soria	353	3.358	36,73	44,23	42,49	464
Salamanca	527	4.362	27,74	34,89	33,26	726
Coruña, A	155	1.950	57,74	62,84	61,69	335
Pontevedra	155	1.932	56,00	53,38	62,44	254
Albacete	663	4.278	24,49	34,60	31,34	850

¹ Provinces belonging to uniprovincial Autonomous Communities have not been included because they are reflected in previous tables.

5. Number of travellers, overnight stays, average stay, capacity and occupancy rates in areas with the highest number of overnight stays

Areas	Number of travellers		Number of overnight stays		Average stay	Capacity		Occupancy rate		
	Residents In Spain	Residents abroad	Residents In Spain	Residents abroad		Estimated open rural establishments	Estimated bed-places	Of bed-places	Of bed-places at weekend	Of bedrooms
Isla de Mallorca	5.367	35.660	21.426	148.435	4,14	420	7.962	66,93	58,46	75,13
Costa Verde	23.021	2.993	108.044	14.543	4,71	568	6.347	62,05	62,46	73,53
Pirineus	18.069	3.316	81.219	20.425	4,75	790	6.664	48,38	52,24	58,59
Costa Brava	9.315	7.154	46.524	49.172	5,81	436	4.547	67,06	66,18	76,91
Pirineo Aragonés	14.274	4.544	60.818	16.109	4,09	683	5.236	46,44	49,05	54,26
Pirineo Navarro	11.831	1.347	67.160	7.419	5,66	587	4.092	57,99	54,55	65,90
P.Nacional Picos de Europa	15.328	2.423	65.556	7.709	4,13	339	3.298	70,98	57,45	77,67
Extremadura Norte	19.248	637	50.946	2.445	2,69	332	4.147	41,34	53,66	50,97
P.Natural Sierras de Tejada, Almirajara y Alhama	1.928	4.880	7.208	41.133	7,10	456	2.769	55,67	55,06	69,34
Costa del Sol	469	2.661	3.711	26.539	9,66	253	1.631	59,84	56,19	76,73
Rías Baixas	7.346	2.170	22.716	5.985	3,02	128	1.593	57,20	60,95	63,00
Pirineo Vasco	5.396	1.304	20.878	3.453	3,63	110	1.245	60,66	59,00	66,86
Isla de Menorca	2.010	3.937	8.501	15.569	4,05	49	933	79,47	70,12	85,04
Costa de Gipuzkoa	3.334	1.515	15.212	6.722	4,52	70	802	81,99	78,86	90,19
Parque Nacional Sierra de Guadarrama	7.474	930	17.121	2.535	2,34	125	1.744	36,11	53,67	49,47

6. Number of travellers, overnight stays, average stay, capacity, occupancy rates and employed personnel per rural house by Autonomous City and Community²

Autonomous Communities	Number of travellers		Number of overnight stays		Average stay	Capacity		Occupancy rate		Employed personnel
	Residents In Spain	Residents abroad	Residents In Spain	Residents abroad		Estimated open rural establish.	Estimated bed-places	Of bed-places	Of bed-places at weekends	
TOTAL	287.062	81.164	1.122.175	417.281	4,18	14.925	124.106	39,56	45,17	19.873
Andalucía	32.040	20.959	108.198	145.688	4,79	2.370	19.613	41,50	46,32	3.566
Aragón	20.565	5.018	77.788	16.248	3,68	1.005	7.793	38,14	44,15	1.170
Asturias, Principado de	21.819	2.586	105.402	11.694	4,80	970	6.485	57,94	55,56	1.219
Balears, Illes	2.627	12.523	8.294	43.557	3,42	161	2.394	68,16	62,42	620
Canarias	2.057	1.428	11.015	13.378	7,00	496	2.438	32,11	33,08	590
Cantabria	9.555	1.761	45.070	7.835	4,68	215	2.934	56,90	54,71	285
Castilla y León	50.086	3.284	204.697	16.053	4,14	3.278	23.957	29,56	38,57	3.902
Castilla-La Mancha	28.039	1.806	87.548	6.945	3,17	1.624	13.588	22,36	36,50	2.080
Cataluña	41.763	16.626	178.609	102.119	4,81	2.036	18.246	49,01	51,17	2.706
Comunitat Valenciana	13.973	2.365	50.425	10.914	3,75	771	6.955	28,17	33,46	1.016
Extremadura	10.714	717	30.615	2.525	2,90	372	3.732	28,52	42,51	528
Galicia	19.464	5.526	60.280	15.481	3,03	388	4.680	51,19	53,46	651
Madrid, Comunidad de	2.025	202	7.530	2.006	4,28	87	972	31,57	39,93	109
Murcia, Región de	4.263	441	20.830	2.596	4,98	129	1.878	40,14	51,94	233
Navarra, Comunidad Foral de	13.806	1.823	73.417	9.244	5,29	687	4.938	53,33	53,07	806
País Vasco	10.087	3.581	38.368	10.070	3,54	221	2.393	62,39	62,22	269
Rioja, La	4.180	519	14.088	929	3,20	115	1.110	42,91	53,62	122
Ceuta	-	-	-	-	-	-	-	-	-	-
Melilla	-	-	-	-	-	-	-	-	-	-

² To facilitate the comparability between data from different Autonomous Communities (and because of the different regulation and different characteristics), a group called rural house has been created, with those establishments with similar typology (location, capacity, etc...). The variables included in the previous table have been estimated with that type of establishments.

7. Travellers and overnight stays by country of residence

Results by countries	Travellers		Overnight stays	
	Total	%	Total	%
TOTAL	613.097	100,00	2.299.329	100,00
Residents Spain	472.216	77,02	1.670.667	72,66
Residents abroad	140.881	22,98	628.662	27,34
Total Residents abroad	140.881	100,00	628.662	100,00
Total Residents in EU (excluding Spain)	112.827	80,09	546.304	86,90
- Germany	24.210	17,18	120.932	19,24
- Belgium	6.550	4,65	36.783	5,85
- France	29.956	21,26	140.685	22,38
- Italy	7.529	5,34	26.100	4,15
- Netherlands	11.129	7,90	56.616	9,01
- Portugal	2.856	2,03	8.862	1,41
- United Kingdom	22.879	16,24	122.342	19,46
Switzerland	2.466	1,75	9.004	1,43
Other European countries	11.534	8,19	47.100	7,49
United States of America	4.814	3,42	14.822	2,36
Other countries	16.957	12,04	45.415	7,22

Tourist Accommodation Occupancy Survey Hostels Occupancy Survey (HOS)

August 2018

Provisional data

1. Travellers, overnight stays and average stay by Autonomous Cities and Communities

Autonomous cities and communities	Travellers			Overnight stays			Average stay
	Total	Residents in Spain	Residents abroad	Total	Residents in Spain	Residents abroad	
TOTAL	119.494	73.640	45.855	375.221	265.752	109.468	3,14
Andalucía	15.916	13.674	2.242	49.987	45.925	4.062	3,14
Aragón	4.856	4.297	559	16.732	15.633	1.100	3,45
Asturias, Principado de	549	487	62	3.532	3.365	167	6,43
Balears, Illes	-	-	-	-	-	-	-
Canarias	2.053	778	1.275	7.024	2.261	4.763	3,42
Cantabria	1.965	1.343	622	5.185	4.246	939	2,64
Castilla y León	3.414	2.835	578	15.726	14.523	1.203	4,61
Castilla - La Mancha	3.271	2.998	273	22.877	22.078	799	6,99
Cataluña	41.986	20.640	21.346	121.005	65.170	55.834	2,88
Comunitat Valenciana	16.076	8.694	7.382	43.326	26.213	17.113	2,70
Extremadura	1.418	1.381	37	4.987	4.939	48	3,52
Galicia	1.552	1.454	98	11.179	10.984	195	7,20
Madrid, Comunidad de	3.290	601	2.689	5.943	2.654	3.289	1,81
Murcia, Región de	-	-	-	-	-	-	-
Navarra, Comunidad Foral de	3.273	2.267	1.006	11.851	9.950	1.901	3,62
País Vasco	16.436	9.381	7.054	45.374	28.735	16.639	2,76
Rioja, La	1.196	842	354	2.230	1.856	374	1,86
Ceuta	-	-	-	-	-	-	-
Melilla	-	-	-	-	-	-	-
Annual rate	0,22	6,72	-8,70	-8,10	-6,40	-11,96	-8,30
Cumulative annual rate	8,91	14,16	-1,46	8,14	13,47	-3,68	-0,71

2. Open establishments, capacity, occupancy and number of staff by autonomous cities and communities

Autonomous cities and communities	Capacity		Occupancy rate		Employed personnel
	Estimated open establishments	Estimated bed-places	Of bed-places	Of bed-places at weekend	
TOTAL	261	28.347	42,70	46,92	2.196
Andalucía	18	3.589	44,93	49,77	261
Aragón	23	2.073	26,04	32,62	107
Asturias, Principado de	4	321	35,49	37,80	58
Balears, Illes	-	-	-	-	-
Canarias	25	649	34,90	40,65	64
Cantabria	8	642	26,03	26,96	42
Castilla y León	24	2.242	22,63	26,31	184
Castilla - La Mancha	27	2.989	24,69	23,38	145
Cataluña	52	6.906	56,53	61,90	479
Comunitat Valenciana	16	2.648	52,79	62,63	117
Extremadura	10	782	20,57	32,68	55
Galicia	7	685	52,68	60,51	117
Madrid, Comunidad de	4	522	36,72	42,97	195
Murcia, Región de	-	-	-	-	-
Navarra, Comunidad Foral de	12	994	38,47	39,75	88
País Vasco	19	2.556	57,27	52,74	191
Rioja, La	6	312	23,06	44,91	18
Ceuta	-	-	-	-	-
Melilla	-	-	-	-	-
Annual rate	3,04	2,50	-10,33	-12,50	4,30
Cumulative annual rate	11,45	3,65	4,36	0,78	6,61

3. Travellers and overnight stays by countries of residence

Countries	Travellers		Overnight stays		Average stay
	Total	%	Total	%	
TOTAL	119.494	100,00	375.221	100,00	3,14
Residents in Spain	73.640	61,63	265.752	70,83	3,61
Residents abroad	45.855	38,37	109.468	29,17	2,39
TOTAL residents abroad	45.855	100,00	109.468	100,00	2,39
TOTAL residents in E.U. (excluding Spain)	29.576	64,50	69.992	63,94	2,37
- Germany	4.545	9,91	11.380	10,40	2,50
- Belgium	947	2,07	2.351	2,15	2,48
- France	8.479	18,49	19.919	18,20	2,35
- Italy	6.136	13,38	14.324	13,09	2,33
- Netherlands	1.458	3,18	3.571	3,26	2,45
- Portugal	1.026	2,24	2.069	1,89	2,02
- United Kingdom	3.415	7,45	7.674	7,01	2,25
Switzerland	850	1,85	1.924	1,76	2,26
Other European countries	6.311	13,76	15.628	14,28	2,48
United States of America	2.345	5,11	4.771	4,36	2,03
Other countries	10.343	22,56	25.858	23,62	2,50

HOLIDAY DWELLING PRICE INDEX (HDPI)

August 2018

Provisional data

National general index and breakdown by rates

	Index	Annual variation rate
TOTAL	167,10	2,39
Normal	149,32	0,08
Weekend	145,14	-1,01
Tour-operators and travel agencies	190,90	5,84

National general index and breakdown by modalities

	Index	Annual variation rate
TOTAL	167,10	2,39
Studio	173,94	2,11
Dwellings 2/4 bedplaces	169,94	3,25
Dwellings 4/6 bedplaces	160,21	1,04

Tourist Campsite Price Index (TCSPI). 2002 Base

August 2018

Provisional data

National general index and breakdown by rates

	Index	Annual variation rate
TOTAL	165,16	0,92
Normal rate	169,08	3,63
Special rate for stays up to one month	94,17	-0,20
Special rate for stays longer than one month	169,21	3,54
Bungalow rate*	106,85	-1,70

National general index and breakdown by categories

	Index	Annual variation rate
TOTAL	165,16	0,92
Luxury and first	172,96	-0,13
Second	159,77	2,33
Third	154,72	0,68

*2014 Base

TCSPI (ANNEX OF TABLES) - AUGUST 2018

27th September 2018

Rural Tourism Accommodation Price Index (RTAPI)

August 2018

Provisional data

General Autonomous Cities and Communities and national indices

	Index	Annual variation rate
TOTAL	142,82	2,25
Andalucía	140,03	4,68
Aragón	162,29	-0,90
Asturias, Principado de	131,34	4,11
Baleares, Illes	148,70	1,03
Canarias	115,93	2,11
Cantabria	145,07	0,87
Castilla y León	131,95	1,00
Castilla - La Mancha	141,61	0,81
Cataluña	150,67	3,44
Comunitat Valenciana	143,43	7,30
Extremadura	102,30	-3,67
Galicia	126,61	0,34
Madrid, Comunidad de	147,27	4,64
Murcia, Región de	139,86	-2,01
Navarra, Comunidad Foral de	205,19	6,71
País Vasco	148,07	0,89
Rioja, La	128,25	-2,49
Ceuta	-	-
Melilla	-	-

National general index and breakdown by rates

	Index	Annual variation rate
TOTAL	142,82	2,25
Normal	144,05	2,13
Weekend	141,77	2,47

National general index and breakdown by rent modality

	Index	Annual variation rate
TOTAL	142,82	2,25
Shared use (in case of per room rent modality)	141,79	2,00
Full use (rent of entire dwelling)	143,03	2,35