

1 October 2020

Non-hotel Tourist Accommodation Occupancy Survey
August 2020. Provisional data

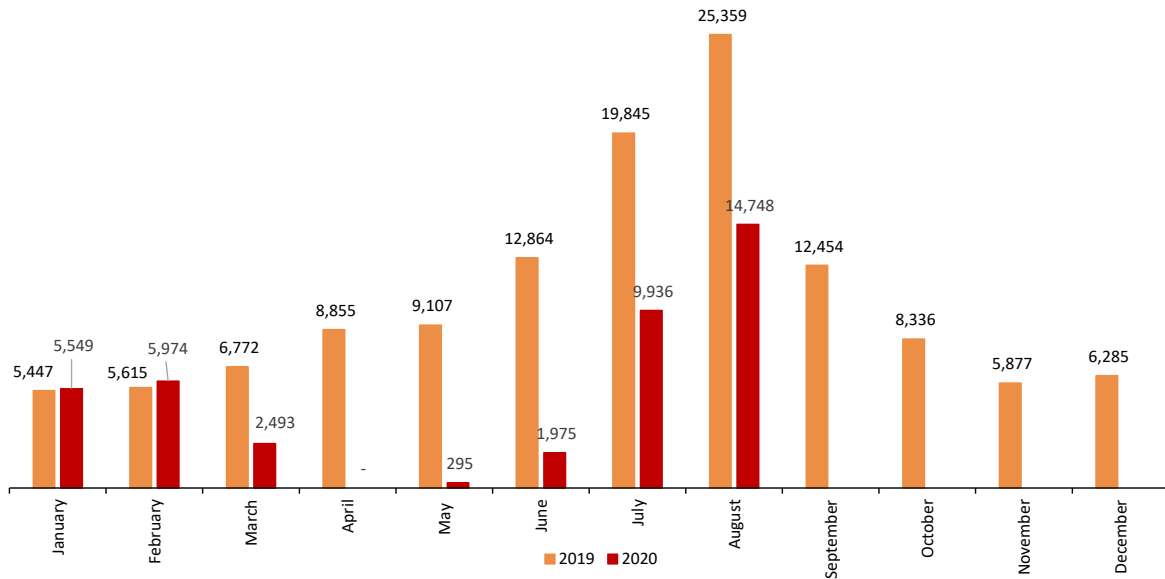
Overnight stays in non-hotel tourist accommodation decrease by 41.8% in August, as compared with the same month of 2019

Overnight stays in rural tourism accommodation by residents in Spain grew 6.8% annually

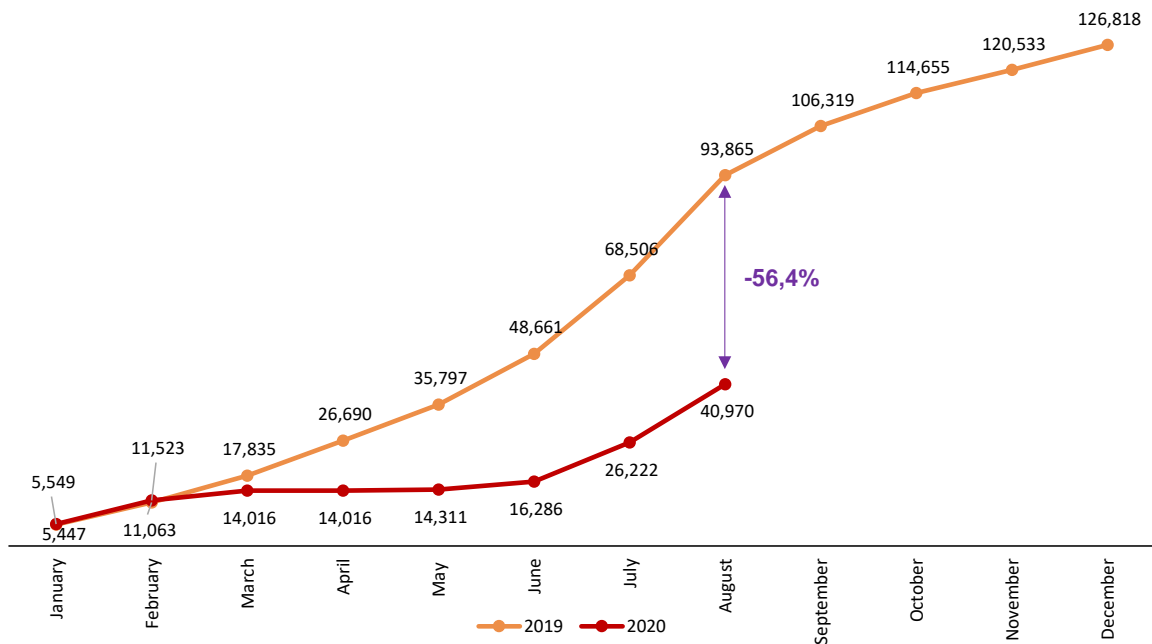
Main results

- In August, the number of open non-hotel tourist lodgings (tourist apartments, campsites, rural tourism accommodations and tourist hostels) increased compared to July, from 127,553 to 141,372. However, that was still 21.9% less than in August 2019.
- More than three million travellers -of whom 87.0% were residents of Spain- stay in non-hotel tourist lodgings in August. They made 14.7 million overnight stays, 41.8% less than in August of 2019.
- Campsites were the most visited lodgings in August, exceeding one and a half million travellers, more than 550,000 of which were in Catalonia.
- Rural tourism lodgings recorded a higher occupancy rate, especially in the north. During the month, accommodations on the Coast of Gipuzkoa, those in the Oyambre Natural Park and the Picos de Europa National Park (both in Cantabria), as well as those on the Costa Verde (Principality of Asturias) had had more than 75% of their rooms occupied.
- In addition, the number of overnight stays by residents in Spain in this type of rural accommodation has grown by 6.8% compared to August 2019.
- Almost a million people stayed in tourist apartments. The highest tourist apartment occupancy rate was in establishments in the north, particularly Cantabria, the Principado de Asturias, and Galicia.
- During the first eight months of the year, there were 40.9 million overnight stays in these types of tourist accommodations, 56.4% less than the same period for 2019.

Overnight stays in non-hotel accommodation monthly. Comparative 2019-2020
Thousands



Accumulated overnight stays in non-hotel accommodation. Comparative 2019-2020
Thousands



Open establishments

In August, a total of 141,372 hotels were open in Spain², 21.9% less than in the same month of 2019. This represents 74.2% of the total directory of establishments in that month.

Type of accomodation	Number of open establishments according to the survey	Percentage of total establishments in the directory	Number of estimated places according to the survey	Percentage of total places in the directory
TOTAL	141,372	74.2%	1,402,317	83.4%
Holiday dwellings (*)	123,738	74.2%	492,290	76.0%
Campsites	1,111	86.9%	731,121	92.8%
Rural T.	16,358	73.8%	160,907	75.8%
Hostels	165	52.2%	17,999	54.1%
Annual rate	-21.9		-12.5	

(*) Estimated number of apartments

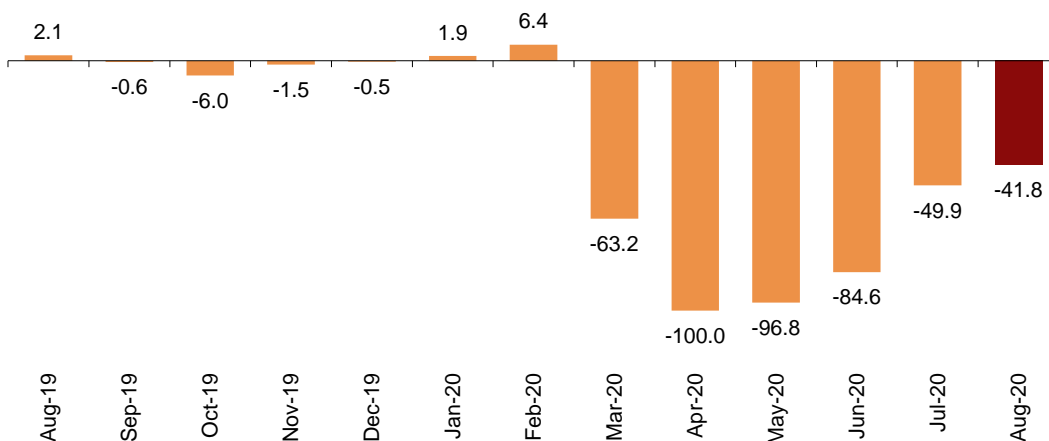
Overnight stays

Overnight stays in hotel establishments exceeded 14.7 million in July, representing a decrease of 41.8% compared to the 25.3 million for the same month of 2019.

By traveller origin, overnight stays by residents of Spain decreased by 10.9% in the annual rate, exceeding 12.0 million. In turn, overnight stays by non-residents fell by 77.5%, to 2.6 million.

Annual variation rate of overnight stays

Percentage



During the aggregate July-August period, the number of overnight stays decreased 45.4% as compared with the same period in 2019. Resident overnight stays decreased by 14.3% and non-resident overnight stays did so by 77.2%.

During the first eight months of 2020, overnight stays decreased by 56.4% as compared with the same period of the previous year.

² The number of tourist apartments was taken into account.

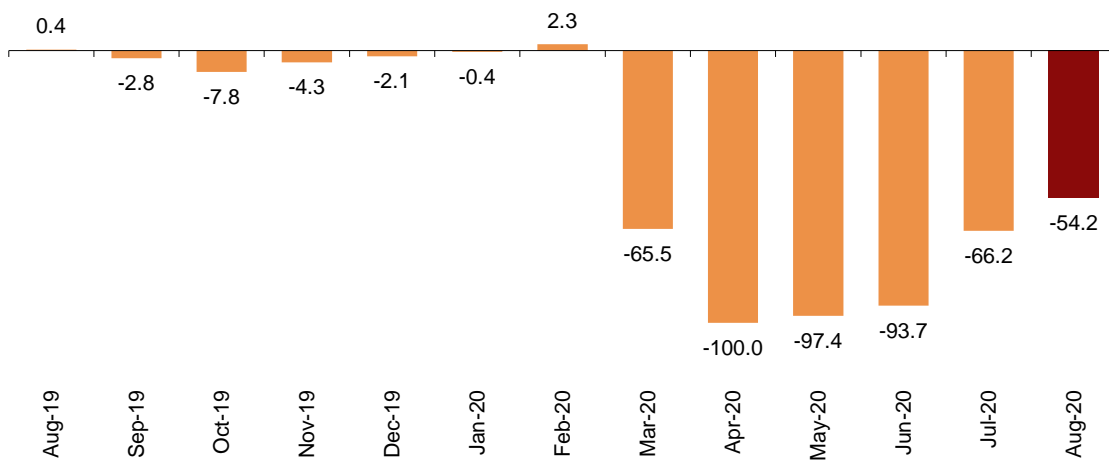
Holiday Dwellings

Overnight stays at tourist apartments decreased by 54.2% in August as compared with the same month of the previous year. Resident overnight stays decreased by 15.3% and non-resident overnight stays did so by 79.5%.

Annual variation rate for overnight stays

Percentage

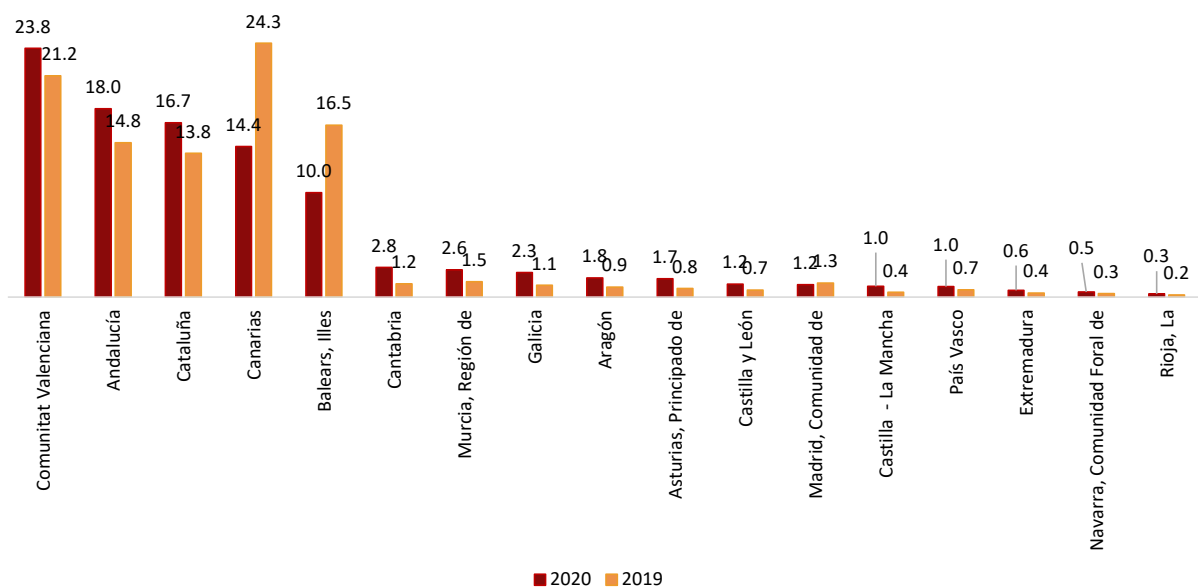
Comunitat Valenciana, Andalucía, and Cataluña were the main destinations of travellers in August, with annual variation rates in the number of overnight stays of -48.5%, -44.2% and -44.6%, respectively.



Distribution of total overnight stays. Comparative July 2019-2020

Percentage

By tourist areas, Costa Blanca was the preferred destination, with 644,443 overnight stays and an occupancy rate of 36.2% for the apartments available.



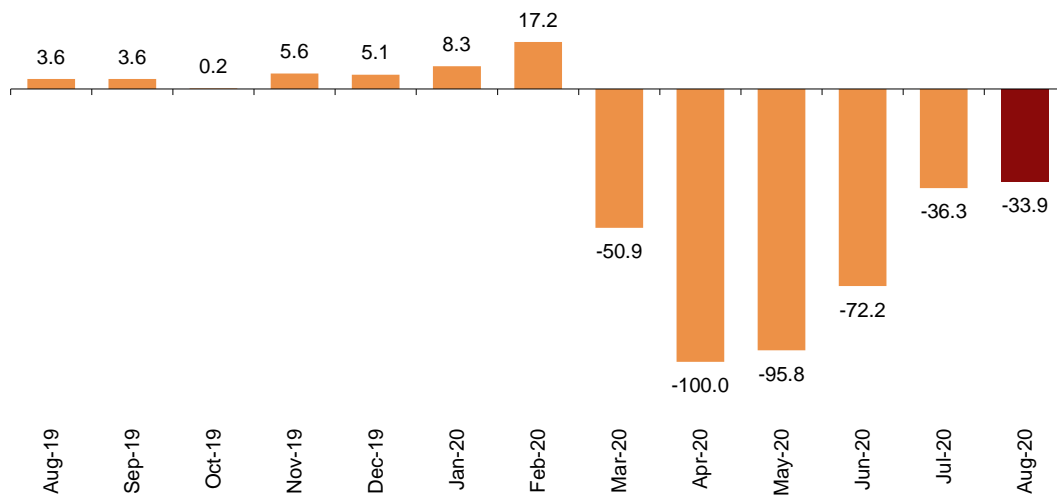
The tourist sites with the greatest number of overnight stays in August were San Bartolomé de Tirajana, Benidorm and Arona.

Tourist Campsites

Overnight stays at tourist campsites registered a decrease of 33.9% in August as compared with the same month of the previous year. Resident overnight stays decreased by 10.3% and non-resident overnight stays did so by 74.7%.

Annual variation rate for overnight stays

Percentage



During the month of August, 44.7% of the offered pitches were occupied, 22.3% less than in the same month of 2019. The weekend occupancy rate by pitch reached 47.6%, with an annual decrease of 19.4%.

Cataluña was the preferred destination for tourist campsites, with 3.0 million overnight stays, representing an annual decrease of 42.3%. La Rioja achieved the highest occupancy rate, with 65.4% of the pitches offered.

By tourist areas, Costa Brava was the preferred destination, with 1.2 million overnight stays and an occupancy rate of 38.2% of the pitches offered.

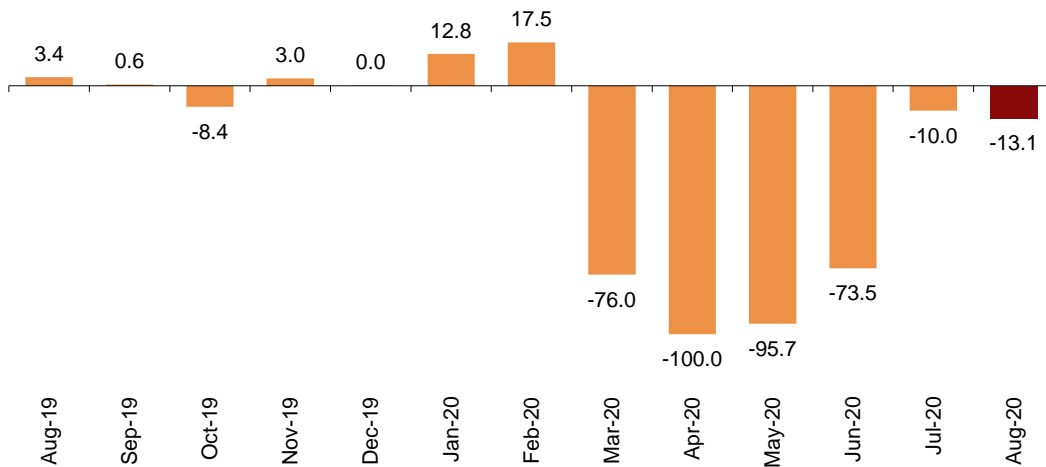
The tourist sites with more overnight stays were Torroella De Montgrí, Tarragona and Benidorm.

Rural tourism accommodation

Overnight stays in rural tourism accommodation had an annual decrease of 13.1% in August. Overnight stays by residents increased by 6.8% while those by non-residents decreased by 70.7%.

Annual variation rate for overnight stays

Percentage



In rural tourism accommodations, 41.6% of bed-places were occupied, 2.7% less than in August 2019. The weekend occupancy rate stood at 48.4%, with an annual growth of 6.7%.

By Autonomous Community, Castilla y León was the preferred destination, with 340,523 overnight stays, 1.4% more than August 2019. Principado de Asturias reached the highest occupancy rate, with 62.7% of bed-places offered.

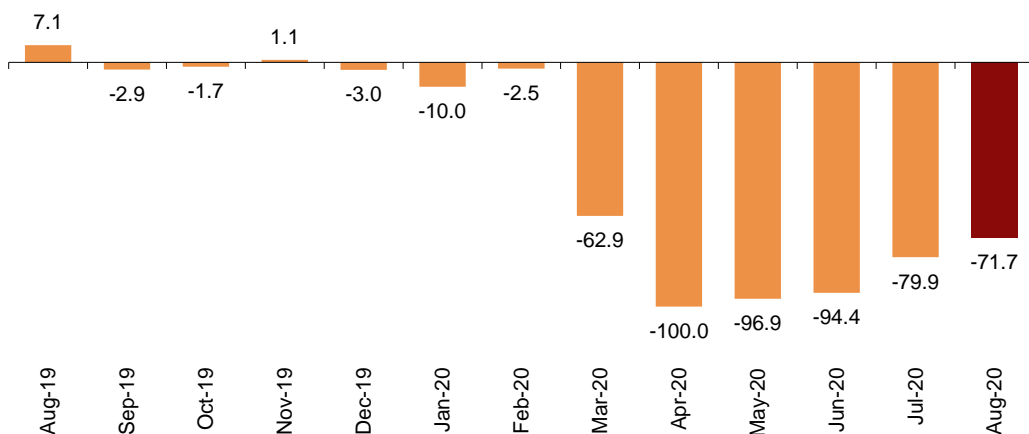
By tourist area, the Costa Verde was the preferred destination, with 134,686 overnight stays. The Natural Park of Oyambre reached the highest occupancy rate, with 78.2% of the bed-places offered.

Hostels

Overnight stays in hostels registered an annual decrease of 71.7% in August. Resident overnight stays decreased by 65.1% and non-resident overnight stays did so by 86.3%.

Annual variation rate for overnight stays

Percentage



In hostels, 20.3% of the available bedplaces were occupied, 54.6% less than in August 2019. The weekend occupancy rate reached 21.0%, with a 49.0% decrease.

By Autonomous Community, Cataluña was the preferred destination, with 37,180 overnight stays, 71.0% less than in August 2019. Canarias reached the highest occupancy rate, with 37.4% of the bed-places offered.

Price indices

The Tourist Apartment Price Index (TAPI) decreased by 8.1% in August compared to the same month of 2019 and the Rural Tourism Accommodation Price Index (RTAPI) decreased by 0.3%.

On the other hand, the Tourist Campsite Price Index (TCPI) increased by 2.2%.

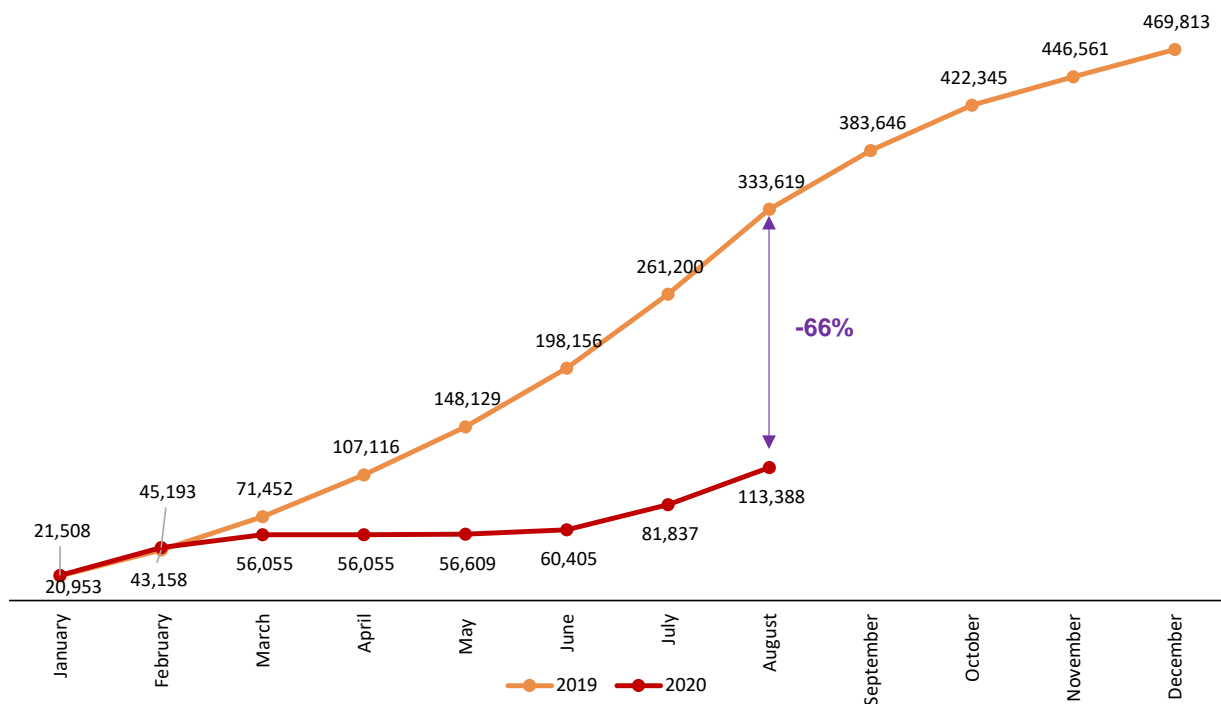
Evolution of travellers and overnight stays in all Spanish collective tourist accommodation

In August, overnight stays in Spanish collective tourist accommodations (hotels³, holiday dwellings, tourist campsites, rural tourism accommodation and youth hostels) decreased by 56.4% in the annual rate.

In the first eight months of the year, overnight stays in all tourist accommodations decreased by 66.0 %.

Accumulated overnight stays. Comparative 2019-2020

Thousands



³ The press release corresponding to Hotel Tourism Short-Term Trends was published on September 23rd.

Revision and updating of data

Coinciding with today's publication, the INE has updated the data for August 2019 in the Holiday Dwelling Price Index (HDPI), the Tourist Campsite Price Index (TCPI) and the Rural Tourism Accommodation Price Index (RTAPI).

Methodological note

The main objective of the Holiday Dwelling Occupancy Survey (HDOS) is to ascertain the behaviour of a series of variables that make it possible to describe the segment that occupies this type of accommodation within the tourist sector, both from the point of view of supply and demand.

The Holiday Dwelling Price Index (HDPI) is a statistical measure of the monthly evolution of the prices offered by holiday dwelling establishments to their clients.

Type of operation: monthly continuous survey.

Population scope: holiday apartment establishments and/or companies operating holiday apartments.

Geographical scope: the entire national territory, with the exception of Ceuta and Melilla, where there are no establishments of this type.

Reference period of the results: the month.

Reference period for the information: The consultation of basic data refers to a fortnight of the month, chosen randomly, in such way that the complete month is covered among all establishments.

Type of sampling: stratified sampling by province and establishment size, and stratified at island-size level for Canarias and Illes Balears.

Collection method: questionnaire filled in directly by the establishment.

For more information on these statistical operations, you can consult the [methodology and the standardised methodological report](#) for each operation in INEbase.

The main objective of the Campsite Occupancy Survey (COS) is to ascertain the behaviour of a series of variables that make it possible to describe the segment that this type of accommodation occupies within the tourist sector, from the viewpoint of both supply and demand.

The Tourist Campsite Price Index (TCPI) is a statistical measure of the monthly evolution of the prices offered by campsites to their clients.

Type of operation: monthly continuous survey.

Population scope: camping establishments.

Geographical scope: the entire national territory, with the exception of Ceuta and Melilla, where there are no establishments of this type.

Reference period of the results: the month.

Reference period of the information: seven consecutive days of each month, chosen randomly in such way that, between all the establishments, the entire month is covered.

Sample size: approximately 1200 establishments.

Type of sampling: comprehensive survey in all provinces.

Collection method: questionnaire filled in directly by the establishment.

For more information on these statistical operations, you can consult the [methodology and the standardised methodological report](#) for each operation in INEbase.

The main objective of the Rural Tourism Accommodation Occupancy Survey (RTAOS) is to ascertain the behaviour of a series of variables that make it possible to describe the fundamental characteristics of this type of accommodation within the tourist sector, both from the point of view of supply and demand.

The Rural Tourism Accommodation Price Index (RTAPI) is a statistical measure of the monthly evolution of the prices that entrepreneurs of this type of accommodation apply to their clients.

Type of operation: monthly continuous survey.

Population scope: rural tourism establishments registered as such in the corresponding register of each Autonomous Community.

Geographical scope: the entire national territory, with the exception of Ceuta and Melilla where there are no establishments of this type.

Reference period of the results: the month.

Reference period for the information: The consultation of basic data refers to all the days of the month.

Type of sampling: comprehensive survey in all provinces except those where the population size is large enough to take a sample.

Collection method: questionnaire filled in directly by the establishment.

For more information on these statistical operations, you can consult the [methodology and the standardised methodological report](#) for each operation in INEbase.

The main objective of the Hostels Occupancy Survey (HOS) is to ascertain the behaviour of a series of variables that make it possible to describe the fundamental characteristics of this type of accommodation within the tourist sector, both from the point of view of supply and demand.

For more information on this statistical operation, you can consult the [methodology and the standardised methodological report](#) in INEbase.

For further information see **INEbase:** www.ine.es/en/ Twitter: [@es_ine](https://twitter.com/es_ine)

All press releases at: www.ine.es/en/prensa/prensa_en.htm

Press Office: Telephone numbers: (+34) 91 583 93 63 /94 08 – gprensa@ine.es

Information Area: Telephone number: (+34) 91 583 91 00 – www.ine.es/infoine/?L=1

Tourist Accommodation Occupancy Survey (Holiday Dwellings)

August 2020

Provisional data

1st October 2020

1. Travellers, overnight stays and average stay by Autonomous Cities and Communities

Autonomous Cities and Communities	Travellers			Overnight stays			Average stay
	Total	Residents in Spain	Residents abroad	Total	Residents in Spain	Residents abroad	
TOTAL	966,105	750,958	215,147	5,329,030	3,879,902	1,449,128	5.52
Andalucía	208,817	175,209	33,608	960,026	784,344	175,682	4.60
Aragón	19,579	18,669	910	97,306	92,605	4,700	4.97
Asturias, Principado de	17,507	17,297	209	92,578	91,418	1,160	5.29
Balears, Illes	96,041	57,236	38,804	531,620	281,378	250,242	5.54
Canarias	132,266	88,785	43,481	767,202	423,057	344,146	5.80
Cantabria	24,140	23,473	666	150,163	146,795	3,368	6.22
Castilla y León	22,250	21,050	1,200	65,503	63,494	2,009	2.94
Castilla - La Mancha	13,683	13,543	140	54,645	53,866	779	3.99
Cataluña	150,638	106,869	43,769	888,076	602,175	285,901	5.90
Comunitat Valenciana	188,385	146,248	42,138	1,268,072	945,465	322,606	6.73
Extremadura	12,181	11,763	418	33,826	33,359	467	2.78
Galicia	27,527	26,250	1,277	124,422	118,204	6,218	4.52
Madrid, Comunidad de	11,266	7,758	3,508	62,146	37,241	24,905	5.52
Murcia, Región de	17,270	15,807	1,463	138,810	128,814	9,996	8.04
Navarra, Comunidad Foral de	7,930	6,828	1,102	25,378	22,837	2,541	3.20
País Vasco	12,496	10,254	2,241	52,780	39,052	13,728	4.22
Rioja, La	4,131	3,919	212	16,477	15,798	680	3.99
Ceuta	-	-	-	-	-	-	-
Melilla	-	-	-	-	-	-	-
Annual rate	-47.65	-10.00	-78.72	-54.22	-15.31	-79.47	-12.54
Cumulative annual rate	-63.72	-47.10	-74.44	-63.48	-44.47	-71.14	0.68

2. Capacity, occupancy and number of staff by Autonomous Cities and Communities

Autonomous Cities and Communities	Capacity		Level of occupancy				Employed personnel
	Estimated bedplaces	Estimated Holiday dwelling	Per bedplaces	Per bedplaces at weekend	Per Holiday dwelling	Per Holiday dwelling at weekend	
TOTAL	492,290	123,738	34.73	36.43	45.01	47.20	22,944
Andalucía	82,816	20,174	37.26	40.03	50.20	53.73	4,313
Aragón	7,749	1,788	40.28	39.65	53.46	53.73	568
Asturias, Principado de	5,076	1,336	58.58	57.07	69.70	68.93	454
Balears, Illes	48,752	15,524	34.92	34.54	41.20	40.89	3,336
Canarias	86,081	27,666	28.51	31.28	35.59	38.88	5,799
Cantabria	6,859	1,738	68.91	68.64	89.57	89.85	630
Castilla y León	6,810	1,843	30.94	33.98	36.76	39.80	556
Castilla - La Mancha	5,224	1,236	33.65	41.37	49.56	58.74	404
Cataluña	71,136	15,124	40.13	42.34	54.00	56.78	1,834
Comunitat Valenciana	133,031	26,707	30.65	31.72	42.18	43.92	2,673
Extremadura	3,339	820	32.66	36.43	45.00	50.34	457
Galicia	7,905	2,037	50.54	49.25	64.36	62.66	555
Madrid, Comunidad de	8,132	3,109	24.61	24.81	36.47	36.41	313
Murcia, Región de	11,269	2,625	39.69	41.21	48.20	50.24	306
Navarra, Comunidad Foral de	2,129	544	37.98	40.96	50.36	51.23	393
País Vasco	4,161	1,067	40.65	41.66	59.84	60.41	256
Rioja, La	1,821	399	29.19	31.82	43.31	47.79	97
Ceuta	-	-	-	-	-	-	-
Melilla	-	-	-	-	-	-	-
Annual rate	-21.78	-23.28	-41.00	-38.00	-39.21	-36.29	-35.43
Cumulative annual rate	-45.23	-46.66	-33.09	-33.44	-28.47	-29.02	-51.27

3. Travellers, overnight stays, capacity, occupancy, total number of staff with greater number of overnight stays¹

Provinces	Travellers		Overnight stays		Average stay	Capacity		Level of occupancy			Employed personnel
	Residents in Spain	Residents abroad	Residents in Spain	Residents abroad		Estimated bed-places	Estimated holiday dwelling	Per bed-places	Per Holiday dwelling	Per Holiday dwelling at weekend	
Alicante/Alacant	66,988	26,752	443,847	229,261	7.18	78,703	16,153	27.56	36.31	37.44	1,646
Girona	58,131	26,292	349,770	191,894	6.42	38,149	8,034	45.67	58.01	60.60	831
Málaga	74,075	24,331	342,724	144,541	4.95	43,921	10,421	35.69	49.12	52.44	2,210
Palmas, Las	45,128	25,648	238,227	209,605	6.33	52,922	16,943	27.09	34.16	36.58	3,392
Castellón/Castelló	52,184	8,354	303,404	51,773	5.87	30,521	5,693	37.18	52.26	54.72	508
St Cruz de Tenerife	43,658	17,832	184,829	134,541	5.19	33,160	10,722	30.79	37.85	42.51	2,407
Tarragona	34,348	11,494	181,918	69,656	5.49	25,092	5,012	32.22	46.80	50.23	556
Valencia/València	27,076	7,032	198,214	41,573	7.03	23,807	4,861	32.47	49.87	52.80	519
Almería	27,006	1,512	128,598	6,515	4.74	12,852	2,971	33.81	49.91	52.85	472
Cádiz	20,805	1,108	107,239	5,685	5.15	7,056	1,784	51.33	67.44	70.19	474
Huelva	16,900	843	86,879	3,574	5.10	5,238	1,145	55.70	69.77	74.87	188
Huesca	11,403	450	64,178	2,448	5.62	4,553	1,018	46.95	61.27	59.32	294
Pontevedra	10,671	500	62,475	2,147	5.78	4,209	999	49.31	61.94	59.83	226
Barcelona	7,483	5,838	40,625	23,461	4.81	5,816	1,633	35.41	54.32	56.83	340
Granada	15,881	1,672	50,593	4,193	3.12	6,018	1,620	29.07	36.11	41.97	412

¹ Provinces belonging to uniprovincial Autonomous Communities have not been included because they are reflected in previous tables.

4. Travellers, overnight stays, capacity, occupancy, total number of staff from tourist areas with greater number of overnight stays

Tourist Areas	Travellers		Overnight stays		Average stay	Capacity		Level of occupancy			Employed personnel
	Residents in Spain	Residents abroad	Residents in Spain	Residents abroad		Estimated bed-places	Estimated holiday dwelling	Per bed-places	Per Holiday dwelling	Per Holiday dwelling at weekend	
Costa Blanca	62,825	26,411	417,612	226,831	7.22	75,207	15,554	27.61	36.18	37.31	1,432
Costa Brava	52,267	26,292	324,826	191,894	6.58	36,784	7,761	45.22	57.43	59.72	681
Costa del Sol (Málaga)	67,856	21,537	317,238	131,227	5.02	40,638	9,610	35.50	48.42	51.34	2,052
Costa de Castellón	50,724	8,344	290,974	51,616	5.80	29,204	5,417	37.46	51.91	54.23	451
Tenerife	31,657	17,019	126,566	125,824	5.19	28,297	9,052	28.48	34.49	39.39	2,024
Costa Daurada	31,317	10,538	164,142	62,407	5.41	23,747	4,737	30.64	44.62	48.22	495
Gran Canaria	25,158	9,055	136,182	82,886	6.40	27,550	9,330	25.40	29.85	33.22	1,907
Ibiza-Formentera	23,556	15,057	100,863	100,871	5.22	15,759	5,145	40.77	48.50	48.61	1,390
Costa Valencia (Valencia)	17,003	1,441	160,308	14,392	9.47	18,263	3,620	30.85	46.69	48.55	237
Menorca	21,472	9,555	118,670	48,908	5.40	14,725	4,592	36.54	42.64	41.60	916

5. Travellers, overnight stays, capacity, occupancy, total number of staff from tourist sites with greater number at overnights stays

Tourist sites	Travellers		Overnight stays		Average stay	Capacity		Level of occupancy			Employed personnel
	Residents in Spain	Residents abroad	Residents in Spain	Residents abroad		Estimated bed-places	Estimated holiday dwelling	Per bed-places	Per Holiday dwelling	Per Holiday dwelling at weekend	
SAN BARTOLOMÉ DE TIR/	16,634	6,786	96,088	64,157	6.84	14,851	4,914	34.40	42.42	46.69	1,258
BENIDORM	16,553	10,390	74,529	61,870	5.06	24,839	5,595	17.69	28.31	30.33	545
ARONA	11,405	6,701	43,596	50,311	5.19	12,165	3,794	24.68	29.98	35.10	966
ALCALÀ DE XIVERT	13,136	1,039	78,242	7,434	6.04	6,073	1,199	45.51	65.53	66.31	107
ADEJE	9,433	6,355	34,473	51,191	5.43	8,354	2,769	32.55	36.25	40.34	456
JÁVEA	4,352	3,626	40,062	44,936	10.65	8,413	1,210	32.59	43.58	44.22	90
CAMBRILS	12,102	1,570	68,217	13,624	5.99	6,536	1,273	40.39	51.54	54.45	170
TORROELLA DE MONTGR	11,507	3,032	55,544	25,757	5.59	5,408	1,162	48.50	61.70	63.19	89
SALOU	11,062	7,429	40,787	39,386	4.34	11,348	2,211	22.58	34.89	40.37	118
DÉNIA	6,652	1,486	56,978	22,246	9.73	5,260	1,070	48.59	64.54	64.56	106

6. Travellers and overnight stays by countries of residence

Countries	Travellers		Overnight stays	
	Total	%	Total	%
TOTAL	966,105	100.00	5,329,030	100.00
Residents in Spain	750,958	77.73	3,879,902	72.81
Residents abroad	215,147	22.27	1,449,128	27.19
Total residents abroad	215,147	100.00	1,449,128	100.00
Total residents in E.U (excluding Spain)	156,072	72.54	1,105,452	76.28
- Germany	18,438	8.57	157,927	10.90
- Austria	599	0.28	4,713	0.33
- Belgium	8,355	3.88	54,106	3.73
- Denmark	517	0.24	3,523	0.24
- Finland	281	0.13	2,580	0.18
- France	72,658	33.77	521,547	35.99
- Greece	97	0.05	514	0.04
- Ireland	2,580	1.20	17,713	1.22
- Italy	13,935	6.48	87,369	6.03
- Luxembourg	742	0.34	4,740	0.33
- Netherlands	18,869	8.77	138,442	9.55
- Poland	4,686	2.18	35,897	2.48
- Portugal	5,527	2.57	27,909	1.93
- United Kingdom	1,163	0.54	6,884	0.48
- Czech Republic	1,266	0.59	9,481	0.65
- Sweden	6,361	2.96	32,107	2.22
- Other EU countries	292	0.14	1,888	0.13
Norway	30,788	14.31	202,811	14.00
United Kingdom	876	0.41	5,366	0.37
Switzerland	1,960	0.91	15,726	1.09
Other european countries	3,830	1.78	18,277	1.26
United States of America	1,840	0.86	7,233	0.50
Rest of America	7,051	3.28	40,751	2.81
African countries	4,281	1.99	16,502	1.14
Other countries	8,156	3.79	35,122	2.42

Tourist Accommodation Occupancy Survey Campsite Occupancy Survey (COS)

August 2020

Provisional data

1st October 2020

1. Travellers, overnight stays and average stay by category of establishment

Category	Travellers			Overnight stays			Average stay
	Total	Residents in Spain	Residents abroad	Total	Residents in Spain	Residents abroad	
TOTAL	1,505,676	1,372,757	132,919	7,217,442	6,205,677	1,011,765	4.79
Luxury and first-class	634,254	577,574	56,680	3,159,754	2,670,004	489,750	4.98
Second-class	717,606	650,491	67,115	3,329,032	2,858,655	470,377	4.64
Third-class	153,816	144,693	9,123	728,655	677,018	51,638	4.74
Annual rate	-27.59	-5.43	-78.83	-33.88	-10.32	-74.68	-8.69
Cumulative annual rate	-47.51	-33.26	-77.03	-47.81	-32.52	-66.39	-0.58

2. Open establishments, capacity, occupancy and number of staff by category of establishments

Category	Estimated open establishments	Capacity		Occupied pitches	Occupancy rate per pitch	Weekend occupancy rate	Employed personnel
		Estimated bedplaces	Estimated pitches				
TOTAL	1,111	731,121	222,729	3,085,797	44.69	47.59	12,676
Luxury and first-class	281	313,978	92,944	1,257,851	43.66	46.58	6,004
Second-class	617	337,345	105,468	1,475,718	45.14	48.30	5,393
Third-class	212	79,798	24,317	352,228	46.72	48.30	1,279
Annual rate	-7.36	-4.38	-4.10	-25.50	-22.32	-19.37	-13.36
Cumulative annual rate	-40.16	-40.94	-40.67	-44.11	-6.12	-8.18	-42.49

3. Travellers, overnight stays and average stay by Autonomous Cities and Communities

Autonomous cities and communities	Travellers			Overnight stays			Average stay
	Total	Residents in Spain	Residents abroad	Total	Residents in Spain	Residents abroad	
TOTAL	1,505,676	1,372,757	132,919	7,217,442	6,205,677	1,011,765	4.79
Andalucía	184,608	173,672	10,936	705,282	650,547	54,735	3.82
Aragón	94,271	84,888	9,383	331,658	304,269	27,389	3.52
Asturias, Principado de	85,252	79,164	6,089	358,775	342,125	16,650	4.21
Balears, Illes ¹	8,690	6,688	2,002	48,855	35,012	13,843	5.62
Canarias ¹	4,025	3,998	27	15,663	11,959	3,704	3.89
Cantabria	83,917	77,373	6,543	525,664	500,824	24,841	6.26
Castilla y León	77,927	73,555	4,371	225,325	218,435	6,891	2.89
Castilla - La Mancha	20,428	19,901	527	65,295	64,595	700	3.20
Cataluña	553,783	496,691	57,092	3,002,788	2,409,764	593,025	5.42
Comunitat Valenciana	153,514	140,838	12,676	935,717	741,154	194,563	6.10
Extremadura	16,254	14,731	1,523	60,778	57,067	3,711	3.74
Galicia	76,557	70,076	6,480	290,669	273,584	17,085	3.80
Madrid, Comunidad de	34,624	33,056	1,568	139,073	133,403	5,670	4.02
Murcia, Región de	18,810	17,385	1,425	112,124	94,027	18,096	5.96
Navarra, Comunidad Foral de	37,534	35,747	1,787	161,393	157,530	3,863	4.30
País Vasco	40,663	30,616	10,047	156,483	130,555	25,928	3.85
Rioja, La	14,820	14,378	442	81,899	80,828	1,071	5.53
Ceuta	-	-	-	-	-	-	-
Melilla	-	-	-	-	-	-	-

¹ The size of the sample in these communities does not facilitate the INE the broken down results, with the objective of maintaining statistical secrecy. Nevertheless, the data corresponding to these communities are included in the national total.

4. Open establishments, capacity, occupancy and number of staff by autonomous cities and communities

Autonomous cities and communities	Estimated open establishments	Capacity		Occupied pitches	Occupancy rate per pitch	Weekend occupancy rate	Employed personnel
		Estimated bedplaces	Estimated pitches				
TOTAL	1,111	731,121	222,729	3,085,797	44.69	47.59	12,676
Andalucía	137	78,747	25,151	298,069	38.23	43.30	1,324
Aragón	84	30,498	9,233	141,919	49.58	53.28	631
Asturias, Principado de	52	27,120	8,478	140,346	53.40	54.60	433
Balears, Illes ¹	7	2,797	1,222	14,979	39.53	40.12	94
Canarias ¹	6	3,836	1,525	10,532	22.28	29.65	32
Cantabria	48	35,139	11,267	192,015	54.97	56.96	485
Castilla y León	75	33,036	11,175	96,851	27.96	32.20	535
Castilla - La Mancha	26	10,465	2,798	24,774	28.56	43.89	248
Cataluña	326	317,162	91,731	1,268,984	44.62	47.56	5,129
Comunitat Valenciana	124	78,196	24,318	406,245	53.89	54.78	1,770
Extremadura	23	9,286	3,051	27,820	29.42	38.22	196
Galicia	112	37,113	11,876	125,320	34.04	36.05	691
Madrid, Comunidad de	19	17,189	5,919	108,497	59.13	51.64	291
Murcia, Región de	16	14,753	4,850	46,765	31.10	31.63	244
Navarra, Comunidad Foral de	25	14,430	3,840	68,730	57.74	57.66	248
País Vasco	25	13,105	3,867	64,711	53.98	60.45	237
Rioja, La	8	8,249	2,429	49,239	65.40	71.46	89
Ceuta	-	-	-	-	-	-	-
Melilla	-	-	-	-	-	-	-

¹ The size of the sample in these communities does not facilitate the INE the broken down results, with the objective of maintaining statistical secrecy. Nevertheless, the data corresponding to these communities are included in the national total.

5. Travellers and overnight stays, average stay, capacity, occupancy and number of staff by provinces with the greatest number of overnight stays¹

Provinces	Travellers		Overnight stays		Average stay	Estimated open establishments	Estimated pitches	Occupancy rate per pitch	Employed personnel
	Residents in Spain	Residents abroad	Residents in Spain	Residents abroad					
	Girona	205,888	34,857	980,485					
Tarragona	158,988	14,023	814,321	143,129	5.53	64	24,743	48.00	1,459
Alicante\Alacant	66,018	6,058	311,298	153,571	6.45	49	11,223	60.41	1,092
Barcelona	73,121	5,427	358,117	54,224	5.25	73	16,788	46.32	705
Huesca	71,854	8,427	258,887	25,097	3.54	61	7,133	55.09	518
Lleida	58,694	2,785	256,840	6,859	4.29	57	7,624	54.64	309
Valencia\València	47,561	3,468	228,573	11,604	4.71	36	6,318	52.13	322
Cádiz	58,716	3,838	220,933	14,143	3.76	28	6,920	42.19	398
Castellón\Castelló	27,258	3,150	201,283	29,388	7.59	39	6,777	44.73	356
Pontevedra	41,445	3,022	157,348	7,880	3.72	45	6,198	37.62	396
Huelva	31,003	1,186	132,710	4,071	4.25	12	4,881	38.01	227
Málaga	24,239	2,271	95,018	23,802	4.48	28	4,611	36.90	214
Coruña, A	21,007	2,610	98,125	7,975	4.49	50	4,450	31.22	235
Gipuzkoa	20,514	7,628	71,237	22,108	3.32	14	2,414	53.18	133
Almería	23,163	1,753	74,669	7,660	3.30	23	2,880	45.60	166

¹ Provinces belonging to uniprovincial Autonomous Communities have not been included because they are reflected in previous tables.

6. Travellers, overnight stays, average stay, open establishments, capacity, occupancy and number of staff from tourist areas with the greatest number of overnight stays

Tourist areas	Travellers		Overnight stays		Average stay	Estimated open establishments	Estimated pitches	Occupancy rate per pitch	Employed personnel
	Residents in Spain	Residents abroad	Residents in Spain	Residents abroad					
	Costa Brava	171,224	34,387	840,708					
Costa Daurada	130,045	12,186	676,400	131,204	5.68	49	21,558	46.76	1,278
Pirineus	101,628	2,855	429,830	7,635	4.19	98	12,856	58.35	592
Costa Blanca	56,781	5,228	261,974	125,399	6.25	40	8,793	65.47	1,015
Costa Verde	62,152	4,634	293,188	12,968	4.58	43	7,359	52.99	384
Costa Barcelona	47,014	5,381	247,087	54,146	5.75	43	13,060	43.74	519
pn Aiguamolls de l'Empordà	29,051	11,632	161,454	131,629	7.20	22	10,175	32.86	723
Pirineo Aragonés	71,021	8,021	256,531	24,543	3.56	57	6,836	55.03	503
Costa de la Luz (Cádiz)	56,521	3,515	216,358	12,777	3.82	24	6,251	44.12	380
Costa de Castellón	22,847	2,807	179,654	26,846	8.05	31	6,031	45.43	312
Rías Baixas	51,634	3,713	189,892	9,530	3.60	59	7,920	34.81	501
Costa Valencia	30,779	2,381	172,334	9,181	5.47	20	4,451	54.38	226
Terres de l'Ebre	28,943	1,836	137,921	11,924	4.87	15	3,185	56.43	181
Costa de la Luz (Huelva)	29,668	1,162	130,398	4,045	4.36	9	4,670	38.34	215
pn Alt Pirineu	25,407	1,107	102,844	2,985	3.99	18	2,647	57.61	90

7. Travellers, overnight stays, average stay, open establishments, capacity, occupancy and number of staff from tourist sites with the greatest number at overnights stays

Tourist sites	Travellers		Overnight stays		Average stay	Estimated open establishments	Estimated pitches	Occupancy rate per pitch	Employed personnel
	Residents in Spain	Residents abroad	Residents in Spain	Residents abroad					
	Torroella De Montgrí	25,242	4,234	126,056					
Tarragona	31,187	1,599	156,017	15,956	5.25	7	3,118	62.48	300
Benidorm	12,679	1,880	49,957	93,572	9.86	10	3,807	74.31	336
Blanes	15,435	3,600	94,326	39,591	7.04	11	3,294	45.62	217
Mont-Roig Del Camp	12,391	5,843	65,753	67,550	7.31	6	4,209	29.53	170
Noja	21,135	1,325	119,127	5,169	5.53	5	2,538	61.10	72
Sant Pere Pescador	10,499	3,966	57,920	62,790	8.35	7	3,676	37.19	289
Castelló D'Empúries	9,876	3,989	58,045	44,152	7.37	5	3,395	35.51	256
Cambrils	15,054	1,047	88,470	9,132	6.06	6	3,088	40.87	154
Calonge	11,810	2,733	60,681	36,864	6.71	5	3,395	29.99	190
Pals	12,673	1,708	60,637	25,950	6.02	5	3,128	31.85	168
Llanes	17,088	1,184	81,640	4,234	4.70	8	2,148	57.78	92

8. Travellers and overnight stays by countries of residence

Countries	Travellers		Overnight stays	
	Total	%	Total	%
TOTAL	1,505,676	100.00	7,217,442	100.00
Residents in Spain	1,372,757	91.17	6,205,677	85.98
Residents abroad	132,919	8.83	1,011,765	14.02
TOTAL residents abroad	132,919	100.00	1,011,765	100.00
TOTAL residents in EU (excluding Spain)	111,017	83.52	811,180	80.17
- Germany	11,695	8.80	70,628	6.98
- Austria	552	0.42	2,161	0.21
- Belgium	5,337	4.01	43,503	4.30
- Denmark	173	0.13	1,579	0.16
- Finland	128	0.10	1,211	0.12
- France	56,245	42.32	367,505	36.32
- Greece	70	0.05	207	0.02
- Ireland	1,318	0.99	19,441	1.92
- Italy	4,244	3.19	15,328	1.51
- Luxembourg	368	0.28	1,760	0.17
- Netherlands	15,779	11.87	242,432	23.96
- Poland	1,321	0.99	7,191	0.71
- Portugal	6,848	5.15	17,222	1.70
- Czech Republic	388	0.29	747	0.07
- Sweden	351	0.26	3,017	0.30
- Other EU countries	6,201	4.67	17,251	1.71
Norway	108	0.08	2,833	0.28
United Kingdom	9,387	7.06	157,508	15.57
Russia	278	0.21	840	0.08
Switzerland	774	0.58	4,606	0.46
Other European countries	2,611	1.96	8,596	0.85
United States of America	401	0.30	1,115	0.11
Rest of America	2,861	2.15	7,746	0.77
African countries	514	0.39	2,529	0.25
Other countries	4,967	3.74	14,811	1.46

¹ Non-significant data

**Tourist accommodation occupancy survey
(Rural tourist accommodation)**

August 2020

Provisional data

1st October 2020

1. Number of travellers, overnight stays and average stay by Autonomous City and Community

Autonomous Communities	Number of travellers			Number of overnight stays			Average stay
	Total	Residents In Spain	Residents abroad	Total	Residents In Spain	Residents abroad	
TOTAL	531,755	489,507	42,248	2,087,854	1,906,691	181,163	3.93
Andalucía	47,253	40,916	6,336	218,888	176,788	42,101	4.63
Aragón	22,980	21,725	1,255	106,545	99,660	6,885	4.64
Asturias, Principado de	62,673	60,849	1,824	294,104	286,262	7,842	4.69
Balears, Illes	26,265	12,987	13,278	101,332	43,696	57,636	3.86
Canarias	5,860	5,098	762	27,694	21,873	5,821	4.73
Cantabria	46,780	44,959	1,820	161,416	156,045	5,371	3.45
Castilla y León	94,809	91,777	3,032	340,523	334,155	6,368	3.59
Castilla-La Mancha	32,804	32,275	530	118,180	116,985	1,195	3.60
Cataluña	60,668	56,516	4,152	274,534	250,893	23,641	4.53
Comunitat Valenciana	20,811	20,037	774	67,876	64,132	3,744	3.26
Extremadura	28,885	25,914	2,970	80,036	73,622	6,414	2.77
Galicia	27,438	25,520	1,918	78,008	73,428	4,580	2.84
Madrid, Comunidad de	12,303	10,971	1,332	30,454	28,032	2,422	2.48
Murcia, Región de	5,508	5,291	217	24,363	23,179	1,184	4.42
Navarra, Comunidad Foral de	15,372	14,987	385	88,487	87,159	1,328	5.76
País Vasco	17,513	15,933	1,581	61,903	57,479	4,424	3.53
Rioja, La	3,833	3,753	80	13,512	13,304	207	3.53
Ceuta	-	-	-	-	-	-	-
Melilla	-	-	-	-	-	-	-
Annual rate	-18.93	-4.60	-70.42	-13.12	6.81	-70.68	7.17
Cumulative annual rate	-48.88	-41.43	-76.98	-41.42	-28.24	-74.93	14.58

2. Open rural establishments, bed-places, occupancy rates and employed personnel by Autonomous City and Community

Autonomous Communities	Estimated open rural establishments	Estimated bed-places	Occupancy rate			Employed personnel
			Of bed-places	Of bed-places at weekend	Of bedrooms	
TOTAL	16,358	160,907	41.59	48.41	52.13	24,819
Andalucía	2,301	18,935	37.12	43.80	47.09	3,267
Aragón	1,128	8,955	37.90	41.12	48.06	1,274
Asturias, Principado de	1,465	15,093	62.65	60.93	72.76	2,211
Balears, Illes	401	8,251	39.38	46.72	47.32	2,142
Canarias	491	2,773	32.15	35.63	47.17	630
Cantabria	542	8,583	60.04	59.70	68.99	1,042
Castilla y León	3,369	30,561	35.75	46.54	47.33	4,489
Castilla-La Mancha	1,517	13,027	29.15	44.20	38.67	1,970
Cataluña	1,921	17,411	50.47	56.47	63.06	2,645
Comunitat Valenciana	695	8,015	27.27	34.30	42.24	1,092
Extremadura	599	7,359	34.93	43.62	42.97	1,042
Galicia	434	5,799	42.88	48.20	46.47	815
Madrid, Comunidad de	215	3,537	27.67	44.25	38.13	553
Murcia, Región de	137	2,224	35.22	39.97	48.41	241
Navarra, Comunidad Foral de	686	5,373	52.89	54.41	65.25	864
País Vasco	353	3,964	49.35	56.61	57.80	429
Rioja, La	103	1,048	40.92	54.82	45.65	114
Ceuta	-	-	-	-	-	-
Melilla	-	-	-	-	-	-
Annual rate	-10.54	-10.19	-2.74	6.68	1.73	-13.23
Cumulative annual rate	-39.41	-40.55	-1.76	-9.79	3.50	-34.78

3. Number of travellers, overnight stays and average stay in Provinces with the greatest number of overnight stays¹

Provinces	Number of travellers			Number of overnight stays			Average stay
	Total	Residents In Spain	Residents abroad	Total	Residents In Spain	Residents abroad	
Girona	24,415	21,755	2,661	114,551	99,634	14,917	4.69
Málaga	18,396	14,056	4,341	109,282	76,781	32,501	5.94
Barcelona	17,550	17,011	539	75,625	73,242	2,383	4.31
Ávila	15,429	15,215	214	72,551	71,532	1,018	4.70
Huesca	13,812	12,883	929	65,984	60,582	5,401	4.78
Cáceres	23,657	20,856	2,800	63,611	57,840	5,771	2.69
Lleida	12,049	11,686	363	57,832	55,322	2,510	4.80
León	17,910	17,101	809	50,465	49,272	1,193	2.82
Albacete	11,422	11,299	124	44,080	43,734	346	3.86
Salamanca	10,632	10,163	469	41,972	41,192	780	3.95
Burgos	10,931	10,414	517	38,234	37,052	1,182	3.50
Segovia	10,152	9,871	281	35,771	35,366	404	3.52
Gipúzkoa	10,156	9,049	1,106	35,271	32,301	2,970	3.47
Soria	9,381	9,328	53	33,653	32,833	820	3.59
Zamora	9,022	8,869	152	29,610	29,389	222	3.28

¹ Provinces belonging to uniprovincial Autonomous Communities have not been included because they are reflected in previous tables.

4. Open rural establishments, bed-places, occupancy rates and employed personnel in Provinces with the highest number of overnight stays¹

Provinces	Estimated open rural establishments	Estimated bed-places	Occupancy rate			Employed personnel
			Of bed-places	Of bed-places at weekend	Of bedrooms	
Girona	614	6,491	56.42	58.38	69.56	801
Málaga	1,337	8,923	39.33	42.56	49.74	1,856
Barcelona	528	4,543	53.40	63.61	64.98	814
Ávila	714	5,914	39.52	54.12	58.34	839
Huesca	626	4,771	44.03	44.55	55.00	700
Cáceres	456	5,684	35.93	44.43	44.46	806
Lleida	512	3,842	48.00	54.55	60.49	720
León	450	3,695	43.75	52.99	52.59	662
Albacete	677	4,348	32.67	48.98	45.61	898
Salamanca	460	3,778	35.61	42.01	45.44	635
Burgos	417	4,245	28.96	40.19	36.11	445
Segovia	409	3,929	29.05	41.02	39.85	546
Gipúzkoa	167	1,931	57.18	58.14	68.11	202
Soria	287	2,827	38.08	46.29	47.00	354
Zamora	246	2,381	39.93	49.45	49.17	398

¹ Provinces belonging to uniprovincial Autonomous Communities have not been included because they are reflected in previous tables.

5. Number of travellers, overnight stays, average stay, capacity and occupancy rates in areas with the highest number of overnight stays

Areas	Number of travellers		Number of overnight stays		Average stay	Capacity		Occupancy rate		
	Residents In Spain	Residents abroad	Residents In Spain	Residents abroad		Estimated open rural establish.	Estimated bed-places	Of bed-places	Of bed-places at weekend	Of bedrooms
Costa Verde (Asturias)	24,635	692	130,172	4,514	5.32	582	6,680	64.76	61.59	75.75
Pirineus	22,736	766	111,419	5,314	4.97	767	6,629	56.42	61.29	67.57
Pirineo Navarro	13,261	290	79,236	1,146	5.93	573	4,425	58.33	57.46	72.22
Costa Brava	14,483	2,033	65,422	10,356	4.59	398	4,112	58.90	61.13	73.95
Isla de Mallorca	8,229	9,598	26,825	43,038	3.92	310	6,487	34.65	40.26	43.75
P.Nacional Picos de Europa	18,611	961	66,148	2,459	3.51	329	3,171	69.65	71.13	77.87
Pirineo Aragonés	12,296	704	58,680	4,485	4.86	578	4,449	45.16	46.19	56.75
Extremadura Norte	16,272	2,230	44,553	3,987	2.62	298	3,825	40.68	50.23	50.15
P.Natural Sierras de Tejeda, Almijá	4,779	872	30,153	6,467	6.48	433	2,636	44.67	44.14	54.19
Costa del Sol (Málaga)	2,366	1,616	18,929	14,103	8.29	258	1,786	59.32	55.94	69.66
Rías Baixas	7,445	302	23,918	647	3.17	117	1,504	52.14	55.05	55.05
Isla de Menorca	4,056	2,349	14,725	8,898	3.69	64	1,206	62.18	78.19	63.74
P.Natural Calares y Cabeceras de lo	4,527	68	19,880	121	4.35	232	1,298	49.71	58.06	64.09
P.Natural de Oyambre	4,806	114	18,588	522	3.88	49	782	78.18	54.32	81.81
Costa de Gipuzkoa	4,520	557	15,499	1,561	3.36	61	714	74.49	67.37	84.96

6. Number of travellers, overnight stays, average stay, capacity, occupancy rates and employed personnel per rural house by Autonomous City and Community²

Autonomous Communities	Number of travellers		Number of overnight stays		Average stay	Capacity		Occupancy rate		Employed personnel
	Residents In Spain	Residents abroad	Residents In Spain	Residents abroad		Estimated open rural establish.	Estimated bed-places	Of bed-places	Of bed-places at weekend	
TOTAL	319,451	22,478	1,377,724	114,902	4.37	13,873	117,416	40.78	48.17	18,494
Andalucía	40,645	6,304	175,981	42,018	4.64	2,299	18,819	37.19	43.87	3,263
Aragón	17,902	1,035	79,408	5,912	4.51	936	7,309	37.17	40.32	1,073
Asturias, Principado de	24,822	650	121,476	3,715	4.91	888	6,125	65.80	63.31	1,113
Balears, Illes	5,437	4,103	16,035	14,965	3.25	158	2,574	38.80	52.82	526
Canarias	4,044	556	19,548	5,180	5.37	479	2,484	32.06	34.58	564
Cantabria	12,613	261	58,281	1,355	4.63	274	3,423	56.08	53.37	399
Castilla y León	49,609	526	247,131	2,862	4.99	2,984	22,586	35.58	46.29	3,500
Castilla-La Mancha	30,915	506	113,247	1,167	3.64	1,490	12,203	30.13	45.54	1,930
Cataluña	56,516	4,152	250,893	23,641	4.53	1,921	17,411	50.47	56.47	2,645
Comunitat Valenciana	17,173	733	55,829	3,567	3.32	659	6,018	31.78	40.39	988
Extremadura	12,972	1,337	38,659	3,034	2.91	379	3,727	35.93	44.80	560
Galicia	15,525	1,190	49,704	3,257	3.17	311	3,876	43.55	49.46	530
Madrid, Comunidad de	2,257	3	10,925	17	4.84	94	1,177	29.81	41.50	115
Murcia, Región de	4,178	164	20,938	992	5.05	123	1,839	38.35	42.31	198
Navarra, Comunidad Foral de	12,550	293	73,677	1,067	5.82	564	4,505	53.27	54.72	717
País Vasco	8,540	584	32,689	1,944	3.80	209	2,293	47.77	55.40	256
Rioja, La	3,753	80	13,304	207	3.53	103	1,048	40.92	54.82	114
Ceuta	-	-	-	-	-	-	-	-	-	-
Melilla	-	-	-	-	-	-	-	-	-	-

² To facilitate the comparability between data from different Autonomous Communities (and because of the different regulation and different characteristics), a group called rural house has been created, with those establishments with similar typology (location, capacity, etc...).

The variables included in the previous table have been estimated with that type of establishments.

**Tourist Accommodation Occupancy Survey
Hostels Occupancy Survey (HOS)**

August 2020

Provisional data

1st October 2020

1. Travellers, overnight stays and average stay by Autonomous Cities and Communities

Autonomous cities and communities	Travellers			Overnight stays			Average stay
	Total	Residents in Spain	Residents abroad	Total	Residents in Spain	Residents abroad	
TOTAL	35,855	30,027	5,828	113,454	96,462	16,992	3.16
Andalucía	6,266	6,266	0	21,038	21,038	0	3.36
Aragón	1,789	1,736	53	4,667	4,585	82	2.61
Asturias, Principado de	-	-	-	-	-	-	-
Balears, Illes	767	346	421	2,215	667	1,548	2.89
Canarias	946	379	567	4,671	1,043	3,628	4.94
Cantabria	437	341	96	1,181	1,011	170	2.70
Castilla y León	819	774	45	2,877	2,793	83	3.51
Castilla - La Mancha	566	566	0	3,041	3,041	0	5.38
Cataluña	10,390	9,522	868	37,180	32,991	4,189	3.58
Comunitat Valenciana	3,256	2,063	1,193	6,613	4,178	2,435	2.03
Extremadura	912	895	18	2,157	2,140	18	2.37
Galicia	662	661	1	4,255	4,249	5	6.43
Madrid, Comunidad de	-	-	-	-	-	-	-
Murcia, Región de	-	-	-	-	-	-	-
Navarra, Comunidad Foral de	1,457	1,097	360	3,945	3,570	375	2.71
País Vasco	5,438	3,664	1,774	11,810	8,406	3,403	2.17
Rioja, La	125	121	4	419	415	4	3.35
Ceuta	-	-	-	-	-	-	-
Melilla	-	-	-	-	-	-	-
Annual rate	-72.23	-61.53	-88.59	-71.67	-65.12	-86.29	2.03
Cumulative annual rate	-75.80	-73.72	-80.04	-73.36	-72.91	-74.43	10.07

2. Open establishments, capacity, occupancy and number of staff by autonomous cities and communities

Autonomous cities and communities	Capacity		Occupancy rate		Employed personnel
	Estimated open establishments	Estimated bed-places	Of bed-places	Of bed-places at weekend	
TOTAL	165	17,999	20.33	21.01	1,346
Andalucía	9	1,886	35.98	33.22	201
Aragón	16	1,825	8.25	10.12	65
Asturias, Principado de	-	-	-	-	-
Balears, Illes	3	248	28.81	21.42	15
Canarias	17	403	37.42	32.39	33
Cantabria	3	340	11.20	12.91	16
Castilla y León	15	1,400	6.63	6.42	110
Castilla - La Mancha	11	1,417	6.92	6.79	34
Cataluña	38	4,617	25.98	27.65	379
Comunitat Valenciana	6	781	27.30	27.80	47
Extremadura	6	537	12.96	27.93	27
Galicia	5	583	23.56	20.23	119
Madrid, Comunidad de	-	-	-	-	-
Murcia, Región de	-	-	-	-	-
Navarra, Comunidad Foral de	9	726	17.53	17.28	78
País Vasco	14	2,052	18.57	20.69	98
Rioja, La	6	338	4.00	5.39	10
Ceuta	-	-	-	-	-
Melilla	-	-	-	-	-
Annual rate	-38.66	-37.56	-54.63	-48.95	-38.40
Cumulative annual rate	-54.67	-53.66	-42.33	-37.93	-48.71

3. Travellers and overnight stays by countries of residence

Countries	Travellers		Overnight stays		Average stay
	Total	%	Total	%	
TOTAL	35,855	100.00	113,454	100.00	3.16
Residents in Spain	30,027	83.75	96,462	85.02	3.21
Residents abroad	5,828	16.25	16,992	14.98	2.92
TOTAL residents abroad	5,828	100.00	16,992	100.00	2.92
TOTAL Residents in EU-27 ¹ (without Spain)	3,605	61.86	8,240	48.50	2.29
- Germany	487	8.36	1,438	8.46	2.95
- Belgium	94	1.62	186	1.10	1.98
- France	1,453	24.92	3,085	18.16	2.12
- Italy	561	9.63	1,430	8.41	2.55
- Netherlands	262	4.49	602	3.54	2.30
- Portugal	102	1.75	173	1.02	1.70
United Kingdom	316	5.43	782	4.60	2.47
Switzerland	52	0.89	109	0.64	2.10
Other European countries	1,048	17.98	3,801	22.37	3.63
United States of America	37	0.63	88	0.52	2.38
Other countries	1,416	24.31	5,299	31.18	3.74

¹ Since 31 January 2020, The United Kingdom is no longer part of the E.U., hence the aggregate UE-27 is published.

HOLIDAY DWELLING PRICE INDEX (HDPI)

August 2020

Provisional data

1st October 2020

National general index and breakdown by rates

	Index	Annual variation rate
TOTAL	156.56	-8.09
Normal	139.96	-7.88
Weekend	132.85	-9.62
Tour-operators and travel agencies	179.65	-7.99

National general index and breakdown by modalities

	Index	Annual variation rate
TOTAL	156.56	-8.09
Studio	163.75	-6.32
Dwellings 2/4 bedplaces	158.52	-8.55
Dwellings 4/6 bedplaces	151.01	-7.84

Tourist Campsite Price Index (TCSPI). 2002 Base

August 2020

Provisional data

1st October 2020

National general index and breakdown by rates

	Index	Annual variation rate
TOTAL	172.96	2.22
Normal rate	173.90	2.48
Special rate for stays up to one month	104.80	11.62
Special rate for stays longer than one month	180.44	6.12
Bungalow rate ¹	113.27	1.33

¹2014 Base

National general index and breakdown by categories

	Index	Annual variation rate
TOTAL	172.96	2.22
Luxury and first	184.10	2.29
Second	164.21	2.20
Third	160.72	1.64

TCSPI (ANNEX OF TABLES) - August 2020. Provisional data

Rural Tourism Accommodation Price Index (RTAPI)

August

Provisional data

1st October 2020

General Autonomous Cities and Communities and national indices

	Index	Annual variation rate
TOTAL	146.20	-0.32
Andalucía	140.22	-0.35
Aragón	166.83	3.28
Asturias, Principado de	138.28	1.25
Balears, Illes	137.56	-7.90
Canarias	117.42	-0.58
Cantabria	152.27	4.46
Castilla y León	137.86	-0.34
Castilla - La Mancha	139.55	-0.28
Cataluña	161.48	1.52
Comunitat Valenciana	141.87	1.03
Extremadura	101.10	0.91
Galicia	134.56	0.68
Madrid, Comunidad de	158.99	2.96
Murcia, Región de	160.23	-3.38
Navarra, Comunidad Foral de	200.55	-0.01
País Vasco	165.72	1.83
Rioja, La	152.28	1.87
Ceuta	-	-
Melilla	-	-

National general index and breakdown by rates

	Index	Annual variation rate
TOTAL	146.20	-0.32
Normal	147.55	-0.21
Weekend	145.01	-0.48

National general index and breakdown by rent modality

	Index	Annual variation rate
TOTAL	146.20	-0.32
Shared use (in case of per room rent modality)	138.37	-2.68
Full use (rent of entire dwelling)	149.13	0.58