

31 October 2019

Non-hotel Tourist Accommodation Occupancy Surveys
September 2019. Provisional data

Overnight stays in non-hotel tourist accommodation decrease by 1.1% in September, as compared to the same month of 2018

Overnight stays in non-hotel tourist accommodation (apartments, tourist campsites, rural tourism accommodation and hostels) exceeded 12.3 million in September, 1.1% less than in the same month of 2018. Overnight stays by residents dropped 3.2%, whilst those by non-residents grew 0.2%.

The average stay stood at 4.7 overnight stays per traveller.

During the first nine months of 2019, overnight stays increased 0.1%, compared to the same period of the previous year.

Travellers and overnight stays in collective non-hotel tourist accommodation during the month of September were:

| September 2019 | Arrivals | Overnight stays |
|--------------------------------|------------------|-------------------|
| Residents | 1,318,463 | 4,737,787 |
| EU Residents (excluding Spain) | 1,082,868 | 6,820,704 |
| Rest of the world | 206,910 | 830,219 |
| TOTAL | 2,608,241 | 12,388,710 |

Holiday Dwellings

Overnight stays in holiday dwellings decreased by 2.1% in September. Resident overnight stays decreased by 2.0% and non-resident overnight stays did so by 2.1%.

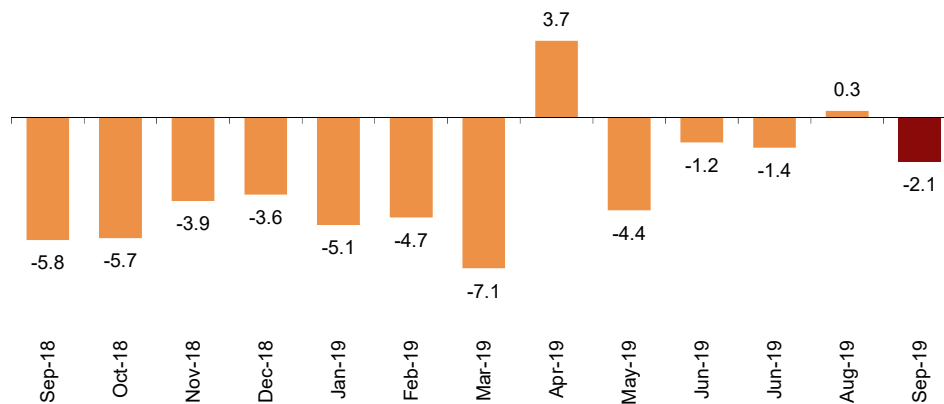
It should be pointed out that the annual variation rates of overnight stays in holiday dwellings showed negative growth over the last few months (with the exception of April and August 2019, when Easter and the Summer took place), mainly due to the fact that there are holiday dwelling establishments that are being reclassified, becoming considered as private housing for holiday use and therefore leaving the scope of observation of the Holiday Dwellings Occupancy Survey (HDOS).

The average stay decreased by 0.9% as compared to September 2018, standing at 5.7 overnight stays per traveller.

In September, 40.8% of the bed-places available for holiday dwellings were occupied, 0.7% more than in the same month of 2018. The weekend occupancy rate by bed-places stood at 43.7%, with an increase of 1.9%.

Annual variation rate for overnight stays

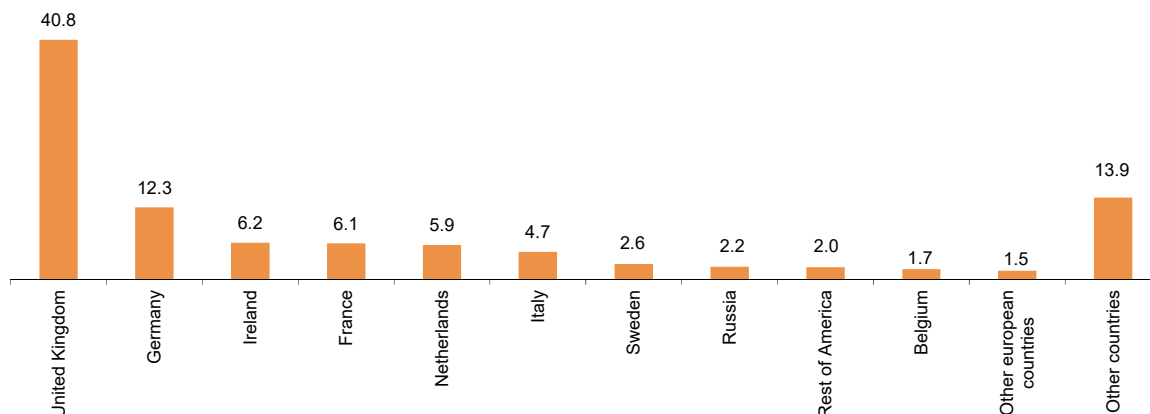
Percentage



Non-resident overnight stays in holiday dwellings represented 72.2% of the total. The United Kingdom was the main country of origin, with more than 2.1 million overnight stays, that is, 1.9% less than in September 2018. The following country of origin was Germany, with 649,821 overnight stays, 16.5% less.

Distribution of non-residents overnight stays. Main country of residence

Percentage



Canarias was the preferred holiday dwelling destination, with 2.2 million overnight stays and a decrease of 6.0% as compared with September 2018. Illes Balears reached the highest occupancy rate, with 83.6% of holiday dwellings offered.

By tourist areas, the island of Mallorca was the preferred destination, with 768,610 overnight stays. The island of Lanzarote registered the highest occupancy rate, with 88.4% of holiday dwellings offered.

The tourist sites with the highest number of overnight stays in September were San Bartolomé de Tirajana, Tías and Arona.

Tourist Campsites

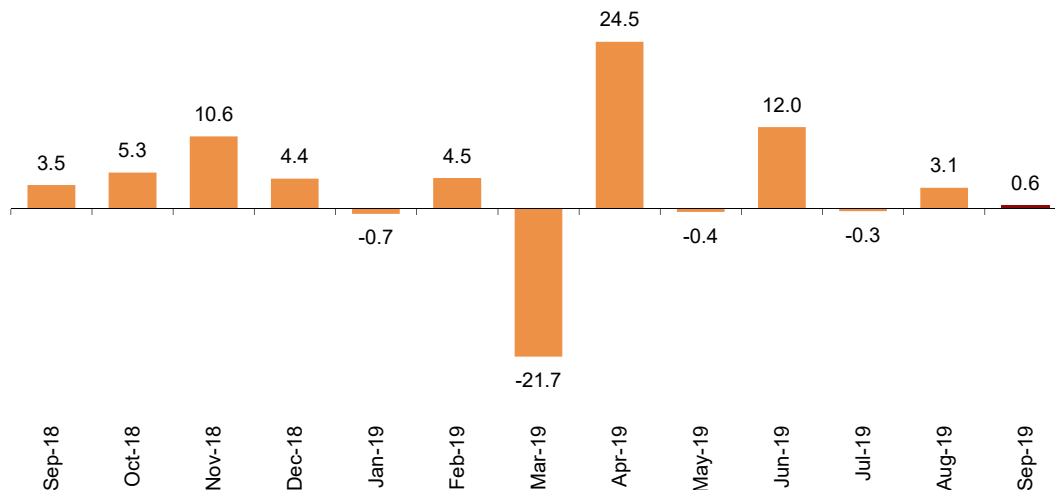
Overnight stays at tourist campsites registered an increase of 0.6% in September as compared with the same month of the previous year. Overnight stays by residents dropped by 4.5%, whilst those by non-residents increased by 6.3%.

During the month of September, 38.2% of the offered pitches were occupied, 2.6% more than in the same month of 2018. The weekend occupancy rate by pitch reached 41.1%, with an increase of 4.7%.

49.5% of overnight stays in tourist campsites were made by non-residents. Germany was the main country of origin, with 21.4% of overnight stays by non-residents, 6.1% more than in September 2018.

Annual variation rate for overnight stays

Percentage



Cataluña was the preferred destination for tourist campsites, with more than 1.8 million overnight stays, representing an increase of 1.5% in the annual rate. La Rioja reached the highest occupancy rate, with 63.9% of the pitches offered.

By tourist area, Costa Brava was the preferred destination, with 771,126 overnight stays. On the other hand, Costa Blanca reached the highest occupancy rate, with 66.6% of pitches offered.

The tourist sites with the highest number of overnight stays were Benidorm, Mont-Roig Del Camp and Torroella de Montgrí.

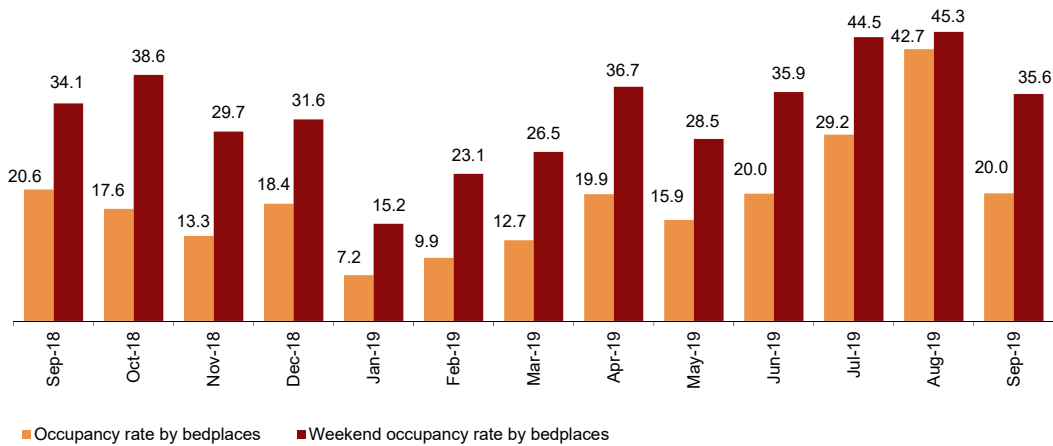
Rural tourism accommodation

Overnight stays in rural tourism accommodation presented an annual increase of 0.0% in September. Overnight stays by residents dropped by 2.1%, whilst those by non-residents increased by 3.8%.

In rural tourism accommodation, 20.0% of the bed-places were occupied in September, 2.8% less than in the same month of 2018. The weekend occupancy rate stood at 35.6%, with a 4.5% increase.

Occupancy rate

Percentage

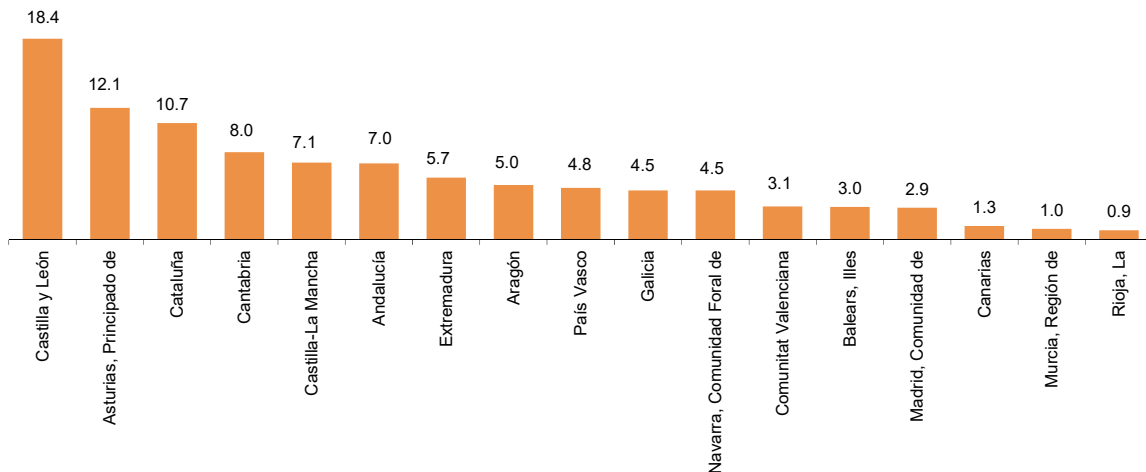


By Autonomous Community, Illes Balears was the preferred destination, with 185,792 overnight stays, 4.1% more than in September 2018. It also reached the highest occupancy rate, with 57.0% of bed-places offered.

By tourist area, the island of Mallorca was the preferred destination, with 150,973 overnight stays. The island of Menorca registered the highest occupancy rate, with 62.0% of the bed-places offered.

Distribution of overnight stays: residents

Percentage

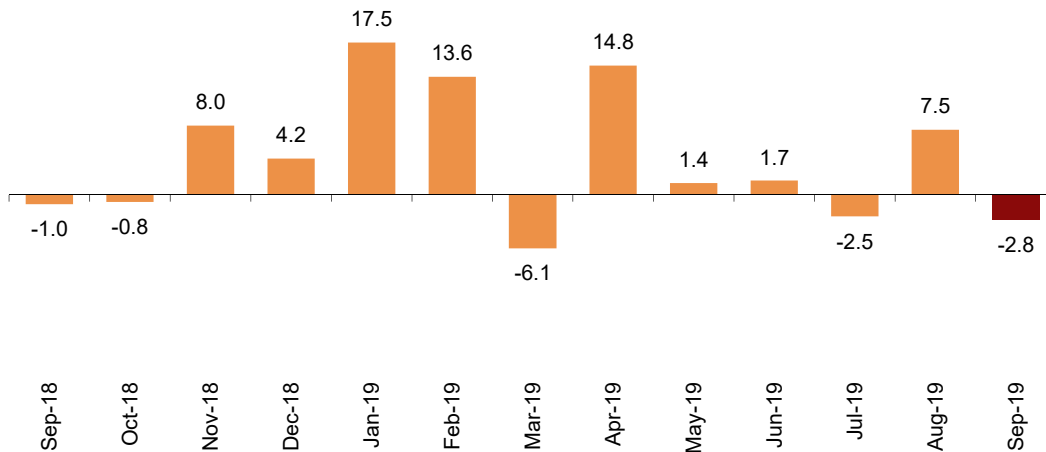


Hostels

Overnight stays in hostels registered an annual decrease of 2.8% in September. Overnight stays by residents dropped by 7.8%, whilst those by non-residents increased by 4.7%.

Annual variation rate for overnight stays

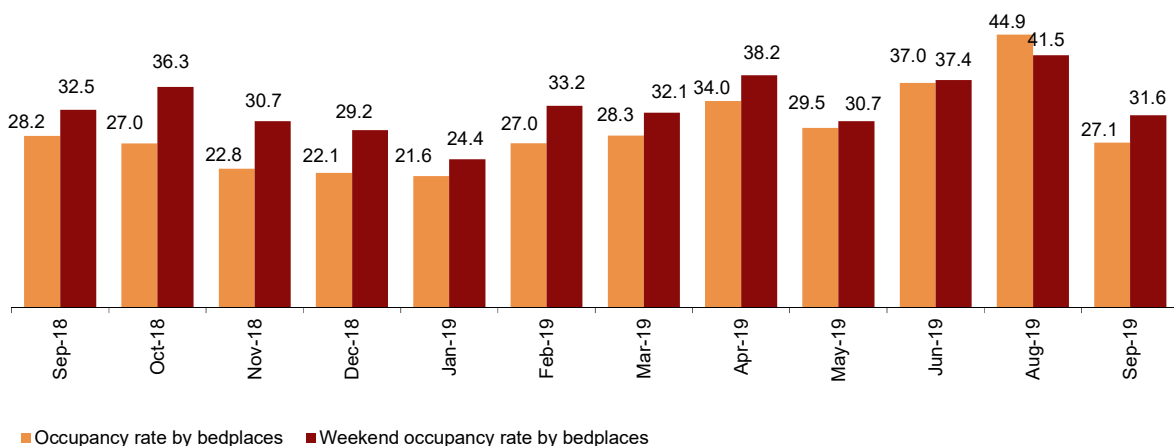
Percentage



27.1% of the available bed-places were occupied, 3.9% less than September 2018. The weekend occupancy rate reached 31.6%, with a 2.8% decrease.

Occupancy rate

Percentage



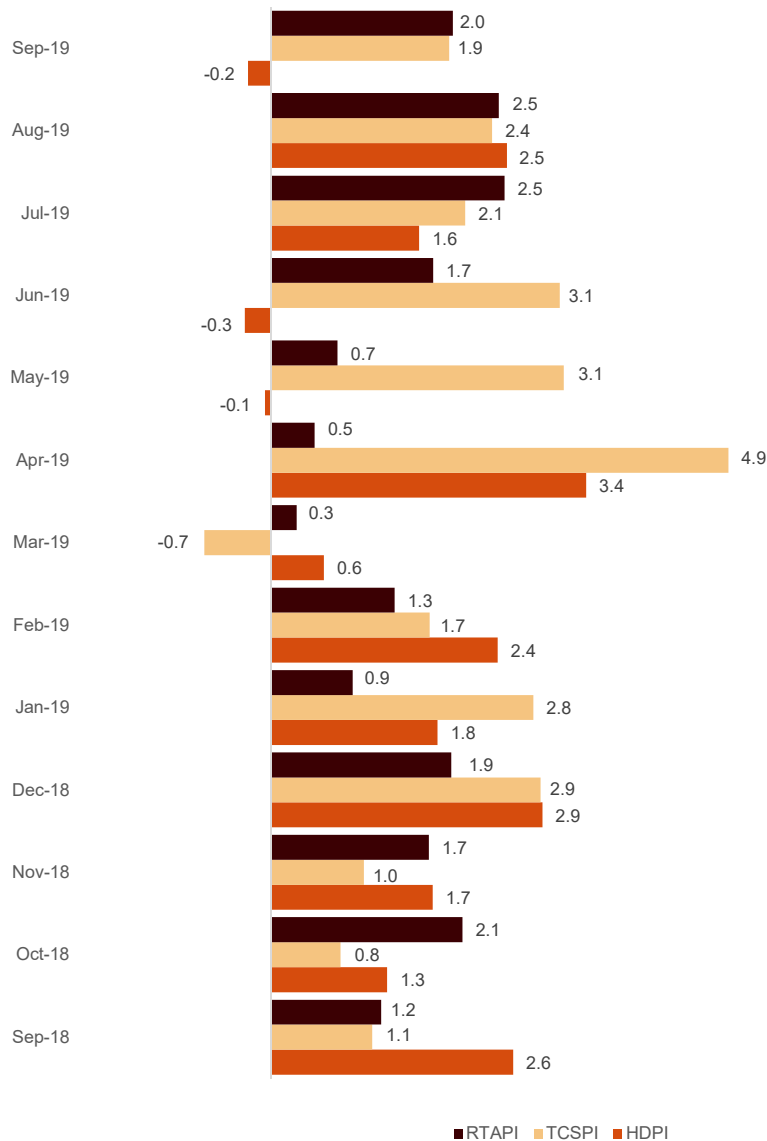
By Autonomous Community, Cataluña was the preferred destination, with 80,289 overnight stays, 2.8% less than in September 2018. Illes Balears reached the highest occupancy rate, with 59.7% of the bed-places offered.

Price indices

The Holiday Dwelling Price Index (HDPI) dropped 0.2% in September as compared to the same month in 2018.

For its part, the Tourist Campsite Price Index (TCPI) increased by 1.9% and the Rural Tourism Accommodation Price Index (RTAPI) increased by 2.0%.

Prices Indices. Annual variation rate Percentage



Evolution of travellers and overnight stays in all Spanish collective tourist accommodation

In September, overnight stays in Spanish collective tourist accommodation (hotels¹, holiday dwellings, tourist campsites, rural tourism accommodation and youth hostels) decreased by 0.7% in the annual rate. Overnight stays by residents recorded an annual variation of 0.0%, whilst those by non-residents was -1.0%.

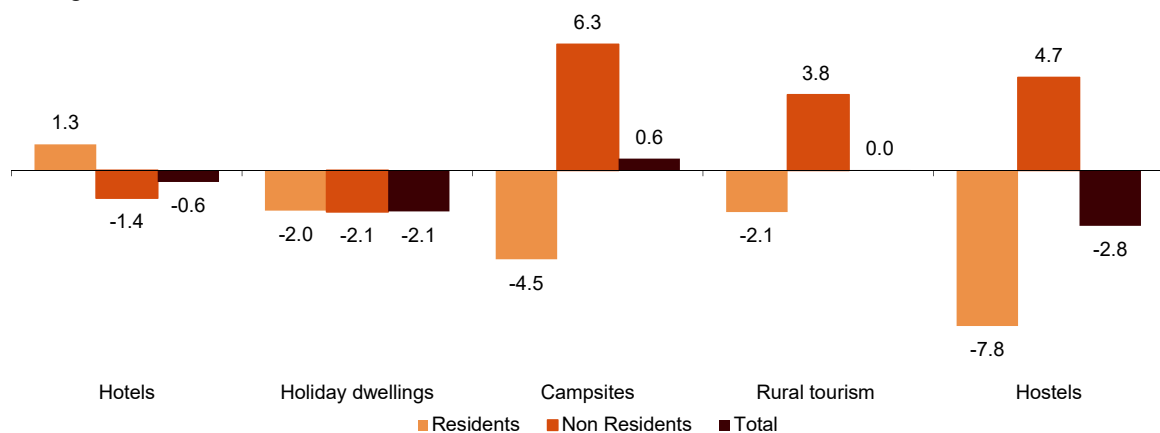
The average stay decreased 0.6% in September, and stood at 3.7 overnight stays per traveller.

Travellers and overnight stays in collective tourist accommodation were:

| September 2019 | Holiday dwellings | Campsites | Rural T. | Hostels | Non-hotel | Hotels | Total |
|------------------------|-------------------|-----------|-----------|---------|------------|------------|------------|
| Arrivals | 1,288,388 | 818,723 | 415,812 | 85,319 | 2,608,242 | 11,020,402 | 13,628,644 |
| Residents | 478,665 | 496,878 | 294,216 | 48,704 | 1,318,463 | 4,815,168 | 6,133,631 |
| Non-residents | 809,723 | 321,844 | 121,595 | 36,616 | 1,289,778 | 6,205,234 | 7,495,012 |
| Overnight stays | 7,334,530 | 3,790,271 | 1,057,679 | 206,231 | 12,388,711 | 37,551,418 | 49,940,129 |
| Residents | 2,042,848 | 1,913,598 | 664,687 | 116,654 | 4,737,787 | 11,560,035 | 16,297,822 |
| Non-residents | 5,291,681 | 1,876,673 | 392,992 | 89,577 | 7,650,923 | 25,991,383 | 33,642,306 |

Of the total number of overnight stays in collective tourist accommodation, 75% corresponded to hotels and 25% to non-hotel tourist accommodation.

Overnight stays in collective tourist accommodation. Annual variation rate Percentage



The main countries of origin for all regulated tourist accommodation were the United Kingdom (with 28.9% of the total number of non-resident overnight stays), Germany (19.0%) and France (7.7%).

Illes Balears was the preferred destination, with over 10.6 million overnight stays (2.0% less than in September 2018). It was followed by Cataluña, with 9.4 million overnight stays (and an increase of 0.9%) and Canarias, with 7.9 million (and an annual decrease of 4.3%).

¹ The press release corresponding to Hotel Tourism Short-Term Trends was published on 23 October.

Revision and updating of data

Coinciding with today's publication, the INE has updated the data for September 2017 in the Holiday Dwelling Price Index (HDPI), the Tourist Campsite Price Index (TCPI) and the Rural Tourism Accommodation Price Index (RTAPI).

Methodological note

The main objective of the Holiday Dwelling Occupancy Survey (HDOS) is to ascertain the behaviour of a series of variables that make it possible to describe the segment that occupies this type of accommodation within the tourist sector, both from the point of view of supply and demand.

The Holiday Dwelling Price Index (HDPI) is a statistical measure of the monthly evolution of the prices that holiday dwelling establishments apply to their clients.

Type of operation: monthly continuous survey.

Population scope: holiday dwelling establishments and/or companies operating holiday dwellings.

Geographical scope: the entire national territory, with the exception of Ceuta and Melilla where there are no establishments of this type.

Reference period of the results: the month.

Reference period of the information: The consultation of basic data refers to a fortnight of the month, chosen randomly, in such a way that among all the establishments they cover the complete month.

Type of sampling: stratified sampling by province and size of establishment, and for Canarias and Illes Balears stratified at island-size level.

Collection method: questionnaire filled in directly by the establishment.

For more information on these statistical operations, you can consult the [methodology and the standardised methodological report](#) for each of them in INEbase.

The main objective of the Campsite Occupancy Survey (COS) is to ascertain the behaviour of a series of variables that make it possible to describe the segment that occupies this type of accommodation within the tourist sector, both from the point of view of supply and demand. The Tourist Campsite Price Index (TCPI) is a statistical measure of the monthly evolution of the prices that campsites apply to their clients.

Type of operation: monthly continuous survey.

Population scope: camping establishments.

Geographical scope: the entire national territory, with the exception of Ceuta and Melilla where there are no establishments of this type.

Reference period of the results: the month.

Reference period of the information: seven consecutive days of each month, chosen randomly in such a way that all the establishments cover the whole month.

Sample size: approximately 1200 establishments.

Type of sampling: comprehensive survey in all provinces.

Collection method: questionnaire filled in directly by the establishment.

For more information on these statistical operations, you can consult the [methodology and the standardised methodological report](#) for each of them in INEbase.

The main objective of the Rural Tourism Accommodation Occupancy Survey (RTAOS) is to ascertain the behaviour of a series of variables that make it possible to describe the fundamental characteristics of this type of accommodation within the tourist sector, both from the point of view of supply and demand.

The Rural Tourism Accommodation Price Index (RTAPI) is a statistical measure of the monthly evolution of the prices that entrepreneurs of this type of accommodation apply to their clients.

Type of operation: monthly continuous survey.

Population scope: rural tourism establishments registered as such in the corresponding register of each Autonomous Community.

Geographical scope: the entire national territory, with the exception of Ceuta and Melilla where there are no establishments of this type.

Reference period of the results: the month.

Reference period of the information: The consultation of basic data refers to all the days of the month.

Type of sampling: comprehensive survey in all provinces except those where the population size is large enough to take a sample.

Collection method: questionnaire filled in directly by the establishment.

For more information on these statistical operations, you can consult the [methodology and the standardised methodological report](#) for each of them in INEbase.

The main objective of the Hostels Occupancy Survey (HOS) is to ascertain the behaviour of a series of variables that make it possible to describe the fundamental characteristics of this type of accommodation within the tourist sector, both from the point of view of supply and demand.

For more information on this statistical operation, you can consult the [methodology and the standardised methodological report](#) in INEbase.

For further information see **INEbase:** www.ine.es/en/ Twitter: [@es_ine](https://twitter.com/es_ine)

All press releases at: www.ine.es/en/prensa/prensa_en.htm

Press office: Telephone numbers: (+34) 91 583 93 63 /94 08 – gprensa@ine.es

Information Area: Telephone number: (+34) 91 583 91 00 – www.ine.es/infoine/?L=1

Tourist Accommodation Occupancy Survey (Holiday Dwellings)

September 2019

Provisional data

31st October 2019

1. Travellers, overnight stays and average stay by Autonomous Cities and Communities

| Autonomous Cities and Communities | Travellers | | | Overnight stays | | | Average stay |
|-----------------------------------|------------|--------------------|------------------|-----------------|--------------------|------------------|--------------|
| | Total | Residents in Spain | Residents abroad | Total | Residents in Spain | Residents abroad | |
| TOTAL | 1,288,388 | 478,665 | 809,723 | 7,334,530 | 2,042,848 | 5,291,681 | 5.69 |
| Andalucía | 268,863 | 128,853 | 140,010 | 1,109,730 | 438,898 | 670,832 | 4.13 |
| Aragón | 15,960 | 12,968 | 2,991 | 47,563 | 36,211 | 11,352 | 2.98 |
| Asturias, Principado de | 6,390 | 5,920 | 470 | 20,433 | 19,389 | 1,044 | 3.20 |
| Balears, Illes | 245,148 | 39,098 | 206,049 | 1,494,934 | 177,389 | 1,317,545 | 6.10 |
| Canarias | 288,135 | 66,213 | 221,922 | 2,240,467 | 318,925 | 1,921,542 | 7.78 |
| Cantabria | 18,857 | 15,836 | 3,020 | 64,098 | 52,213 | 11,885 | 3.40 |
| Castilla y León | 16,218 | 13,738 | 2,480 | 37,225 | 31,108 | 6,117 | 2.30 |
| Castilla - La Mancha | 9,201 | 8,660 | 542 | 28,550 | 27,141 | 1,409 | 3.10 |
| Cataluña | 136,600 | 51,235 | 85,365 | 805,964 | 276,018 | 529,947 | 5.90 |
| Comunitat Valenciana | 164,337 | 68,944 | 95,393 | 1,073,902 | 438,285 | 635,616 | 6.53 |
| Extremadura | 10,751 | 9,373 | 1,378 | 19,807 | 17,145 | 2,662 | 1.84 |
| Galicia | 19,796 | 14,710 | 5,086 | 62,001 | 49,727 | 12,274 | 3.13 |
| Madrid, Comunidad de | 52,826 | 22,450 | 30,376 | 169,875 | 66,407 | 103,468 | 3.22 |
| Murcia, Región de | 11,576 | 6,910 | 4,666 | 76,989 | 49,840 | 27,148 | 6.65 |
| Navarra, Comunidad Foral de | 7,295 | 4,693 | 2,601 | 19,690 | 13,250 | 6,440 | 2.70 |
| País Vasco | 12,484 | 5,975 | 6,509 | 54,793 | 24,046 | 30,747 | 4.39 |
| Rioja, La | 3,952 | 3,089 | 863 | 8,510 | 6,859 | 1,651 | 2.15 |
| Ceuta | - | - | - | - | - | - | - |
| Melilla | - | - | - | - | - | - | - |
| Annual rate | -1.14 | -0.70 | -1.40 | -2.07 | -2.03 | -2.08 | -0.94 |
| Cumulative annual rate | 1.44 | 4.32 | -0.30 | -1.95 | 1.40 | -3.22 | -3.34 |

2. Capacity, occupancy and number of staff by Autonomous Cities and Communities

| Autonomous Cities and Communities | Capacity | | Level of occupancy | | | | Employed personnel |
|-----------------------------------|---------------------|----------------------------|--------------------|--------------------------|----------------------|---------------------------------|--------------------|
| | Estimated bedplaces | Estimated Holiday dwelling | Per bedplaces | Per bedplaces at weekend | Per Holiday dwelling | Per Holiday dwelling at weekend | |
| TOTAL | 597,423 | 155,242 | 40.75 | 43.7 | 62.83 | 66.38 | 33,687 |
| Andalucía | 91,262 | 22,766 | 40.51 | 45.36 | 61.86 | 67.74 | 5,425 |
| Aragón | 8,136 | 1,808 | 19.45 | 30.94 | 30.72 | 43.39 | 533 |
| Asturias, Principado de | 5,088 | 1,336 | 13.38 | 20.39 | 18.06 | 24.90 | 418 |
| Balears, Illes | 77,381 | 24,524 | 63.76 | 64.12 | 83.59 | 84.44 | 6,573 |
| Canarias | 145,142 | 44,992 | 51.26 | 52.92 | 74.02 | 76.56 | 10,958 |
| Cantabria | 6,515 | 1,744 | 32.77 | 40.46 | 42.15 | 50.73 | 571 |
| Castilla y León | 5,945 | 1,370 | 20.80 | 33.27 | 32.46 | 44.06 | 566 |
| Castilla - La Mancha | 5,548 | 1,360 | 17.14 | 31.20 | 27.34 | 42.76 | 493 |
| Cataluña | 81,923 | 17,793 | 32.76 | 36.08 | 53.42 | 57.17 | 2,235 |
| Comunitat Valenciana | 130,887 | 26,747 | 27.32 | 29.07 | 43.54 | 46.00 | 3,239 |
| Extremadura | 3,371 | 811 | 19.57 | 28.72 | 31.91 | 44.62 | 426 |
| Galicia | 6,944 | 1,820 | 29.40 | 32.94 | 41.19 | 46.02 | 485 |
| Madrid, Comunidad de | 10,873 | 3,920 | 51.81 | 57.67 | 77.81 | 83.18 | 611 |
| Murcia, Región de | 10,107 | 2,290 | 25.39 | 27.19 | 44.09 | 46.67 | 298 |
| Navarra, Comunidad Foral de | 2,243 | 465 | 29.12 | 35.76 | 49.87 | 53.24 | 460 |
| País Vasco | 4,254 | 1,104 | 42.69 | 50.48 | 69.04 | 77.11 | 276 |
| Rioja, La | 1,806 | 393 | 15.70 | 34.60 | 29.96 | 56.20 | 122 |
| Ceuta | - | - | - | - | - | - | - |
| Melilla | - | - | - | - | - | - | - |
| Annual rate | -2.53 | -1.99 | 0.66 | 1.88 | -0.96 | 0.37 | 0.41 |
| Cumulative annual rate | -1.04 | -0.70 | -0.66 | 0.04 | -1.47 | -0.79 | 0.16 |

3. Travellers, overnight stays, capacity, occupancy, total number of staff with greater number of overnight stays¹

| Provinces | Travellers | | Overnight stays | | | Capacity | | Level of occupancy | | | Employed personnel |
|------------------------|--------------------|------------------|--------------------|------------------|--------------|----------------------|----------------------------|--------------------|----------------------|---------------------------------|--------------------|
| | Residents in Spain | Residents abroad | Residents in Spain | Residents abroad | Average stay | Estimated bed-places | Estimated holiday dwelling | Per bed-places | Per Holiday dwelling | Per Holiday dwelling at weekend | |
| Palmas, Las | 38,705 | 140,960 | 200,363 | 1,244,704 | 8.04 | 93,868 | 28,315 | 51.08 | 76.42 | 78.91 | 6,973 |
| Santa Cruz de Tenerife | 27,508 | 80,963 | 118,562 | 676,839 | 7.33 | 51,273 | 16,677 | 51.60 | 69.91 | 72.55 | 3,985 |
| Málaga | 41,231 | 91,176 | 138,274 | 520,371 | 4.97 | 49,780 | 12,332 | 44.00 | 69.36 | 72.08 | 3,082 |
| Alicante\Alacant | 25,151 | 66,095 | 175,345 | 476,531 | 7.14 | 80,526 | 16,807 | 26.97 | 44.52 | 47.01 | 1,965 |
| Girona | 19,798 | 29,460 | 102,549 | 207,451 | 6.29 | 39,583 | 8,254 | 26.10 | 42.08 | 45.53 | 794 |
| Tarragona | 18,823 | 28,521 | 92,622 | 209,018 | 6.37 | 29,670 | 5,987 | 33.79 | 56.89 | 61.07 | 814 |
| Castellón\Castelló | 28,272 | 8,057 | 180,001 | 70,397 | 6.89 | 30,475 | 5,717 | 27.35 | 39.98 | 41.54 | 558 |
| Barcelona | 11,237 | 27,175 | 76,430 | 112,721 | 4.92 | 10,303 | 3,022 | 61.06 | 84.44 | 87.64 | 554 |
| Valencia\València | 15,521 | 21,241 | 82,939 | 88,689 | 4.67 | 19,887 | 4,222 | 28.71 | 44.46 | 48.04 | 716 |
| Almería | 22,405 | 4,412 | 97,876 | 32,211 | 4.85 | 13,409 | 3,047 | 32.63 | 50.44 | 58.17 | 441 |
| Sevilla | 16,286 | 24,114 | 36,370 | 58,371 | 2.35 | 6,279 | 1,840 | 49.92 | 75.09 | 79.32 | 491 |
| Cádiz | 14,800 | 6,029 | 61,442 | 23,160 | 4.06 | 6,903 | 1,754 | 40.94 | 57.28 | 68.97 | 413 |
| Huelva | 13,425 | 1,924 | 51,822 | 7,805 | 3.88 | 5,135 | 1,189 | 38.70 | 48.46 | 61.42 | 207 |
| Granada | 11,605 | 9,909 | 32,289 | 24,076 | 2.62 | 6,072 | 1,632 | 30.79 | 45.63 | 56.48 | 529 |
| Gipuzkoa | 2,545 | 4,784 | 11,403 | 25,044 | 4.97 | 2,529 | 618 | 47.74 | 71.23 | 78.95 | 163 |

¹ Provinces belonging to uniprovincial Autonomous Communities have not been included because they are reflected in previous tables.

4. Travellers, overnight stays, capacity, occupancy, total number of staff from tourist areas with greater number of overnight stays

| Tourist Areas | Travellers | | Overnight stays | | | Capacity | | Level of occupancy | | | Employed personnel |
|---------------------------|--------------------|------------------|--------------------|------------------|--------------|----------------------|----------------------------|--------------------|----------------------|---------------------------------|--------------------|
| | Residents in Spain | Residents abroad | Residents in Spain | Residents abroad | Average stay | Estimated bed-places | Estimated holiday dwelling | Per bed-places | Per Holiday dwelling | Per Holiday dwelling at weekend | |
| Isla de Mallorca | 8,706 | 102,516 | 42,038 | 726,572 | 6.91 | 37,160 | 12,141 | 68.14 | 87.23 | 87.85 | 3,041 |
| Isla de Tenerife | 20,012 | 77,543 | 89,601 | 646,527 | 7.55 | 45,350 | 14,666 | 53.84 | 72.74 | 75.00 | 3,495 |
| Isla de Gran Canaria | 23,125 | 64,028 | 111,042 | 578,420 | 7.91 | 48,489 | 14,678 | 47.35 | 69.83 | 73.23 | 3,483 |
| Costa Blanca | 24,795 | 65,870 | 174,513 | 471,411 | 7.12 | 78,621 | 16,457 | 27.37 | 44.98 | 47.43 | 1,901 |
| Costa del Sol | 36,749 | 83,619 | 131,000 | 491,694 | 5.17 | 46,396 | 11,459 | 44.63 | 70.39 | 73.00 | 2,953 |
| Isla de Lanzarote | 8,086 | 58,957 | 51,103 | 500,427 | 8.23 | 31,136 | 9,197 | 58.58 | 88.40 | 89.00 | 2,551 |
| Islas de Ibiza-Formentera | 16,131 | 77,048 | 58,936 | 401,609 | 4.94 | 22,995 | 7,485 | 66.16 | 81.90 | 84.10 | 2,365 |
| Costa Brava | 16,709 | 29,180 | 95,043 | 206,898 | 6.58 | 38,324 | 7,953 | 26.23 | 42.50 | 45.51 | 692 |
| Costa Daurada | 17,814 | 28,209 | 89,018 | 207,277 | 6.44 | 28,456 | 5,733 | 34.61 | 58.49 | 62.68 | 785 |
| Isla de Menorca | 14,262 | 26,485 | 76,414 | 189,364 | 6.52 | 17,227 | 4,898 | 51.13 | 77.11 | 76.50 | 1,167 |

5. Travellers, overnight stays, capacity, occupancy, total number of staff from tourist sites with greater number at overnights stays

| Tourist sites | Travellers | | Overnight stays | | | Capacity | | Level of occupancy | | | Employed personnel |
|---------------------------|--------------------|------------------|--------------------|------------------|--------------|----------------------|----------------------------|--------------------|----------------------|---------------------------------|--------------------|
| | Residents in Spain | Residents abroad | Residents in Spain | Residents abroad | Average stay | Estimated bed-places | Estimated holiday dwelling | Per bed-places | Per Holiday dwelling | Per Holiday dwelling at weekend | |
| San Bartolomé de Tirajana | 16,757 | 38,071 | 79,290 | 348,715 | 7.81 | 30,834 | 9,521 | 46.20 | 67.54 | 72.30 | 2,245 |
| Tías | 4,774 | 31,878 | 31,707 | 275,445 | 8.38 | 15,787 | 4,931 | 64.21 | 90.57 | 90.94 | 1,213 |
| Arona | 3,983 | 33,211 | 19,022 | 285,461 | 8.19 | 18,742 | 6,126 | 53.96 | 70.59 | 72.16 | 1,470 |
| Benidorm | 6,795 | 36,576 | 38,285 | 219,384 | 5.94 | 18,958 | 4,562 | 45.29 | 73.48 | 77.87 | 653 |
| Mogán | 4,671 | 24,807 | 25,618 | 222,996 | 8.43 | 16,348 | 4,582 | 50.69 | 78.73 | 79.69 | 1,160 |
| Adeje | 3,808 | 26,851 | 15,746 | 213,524 | 7.48 | 14,150 | 4,521 | 53.69 | 73.14 | 74.41 | 954 |
| Alcúdia | 3,730 | 25,700 | 18,257 | 180,266 | 6.75 | 7,748 | 2,763 | 82.62 | 91.98 | 91.80 | 637 |
| Calvià | 893 | 24,981 | 4,688 | 187,666 | 7.43 | 8,851 | 3,068 | 71.99 | 89.63 | 91.41 | 712 |
| Ciutadella de Menorca | 6,318 | 18,153 | 34,055 | 134,387 | 6.88 | 10,427 | 2,985 | 53.46 | 79.36 | 78.87 | 690 |
| Madrid | 20,665 | 30,346 | 61,121 | 103,113 | 3.22 | 10,201 | 3,715 | 53.36 | 78.72 | 83.54 | 547 |

6. Travellers and overnight stays by countries of residence

| Countries | Travellers | | Overnight stays | |
|--|------------|--------|-----------------|--------|
| | Total | % | Total | % |
| TOTAL | 1,288,388 | 100.00 | 7,334,530 | 100.00 |
| Residents in Spain | 478,665 | 37.15 | 2,042,848 | 27.85 |
| Residents abroad | 809,723 | 62.85 | 5,291,681 | 72.15 |
| Total residents abroad | 809,723 | 100.00 | 5,291,681 | 100.00 |
| Total residents in E.U (excluding Spain) | 676,676 | 83.57 | 4,674,675 | 88.34 |
| - Germany | 77,693 | 9.60 | 649,821 | 12.28 |
| - Austria | 3,844 | 0.47 | 23,348 | 0.44 |
| - Belgium | 14,241 | 1.76 | 91,793 | 1.73 |
| -Denmark | 13,334 | 1.65 | 89,072 | 1.68 |
| - Finland | 6,261 | 0.77 | 41,054 | 0.78 |
| - France | 53,546 | 6.61 | 323,487 | 6.11 |
| - Greece | 829 | 0.10 | 3,221 | 0.06 |
| - Ireland | 45,502 | 5.62 | 330,358 | 6.24 |
| - Italy | 47,687 | 5.89 | 247,776 | 4.68 |
| - Luxembourg | 967 | 0.12 | 7,939 | 0.15 |
| - Netherlands | 45,725 | 5.65 | 310,400 | 5.87 |
| - Poland | 11,818 | 1.46 | 74,747 | 1.41 |
| - Portugal | 14,612 | 1.80 | 71,244 | 1.35 |
| - United Kingdom | 302,227 | 37.32 | 2,161,210 | 40.84 |
| - Czech Republic | 4,823 | 0.60 | 32,823 | 0.62 |
| - Sweden | 18,616 | 2.30 | 138,389 | 2.62 |
| - Other EU countries | 14,952 | 1.85 | 77,995 | 1.47 |
| Norway | 10,793 | 1.33 | 75,112 | 1.42 |
| Russia | 16,599 | 2.05 | 114,682 | 2.17 |
| Switzerland | 9,960 | 1.23 | 55,584 | 1.05 |
| Other european countries | 13,006 | 1.61 | 78,352 | 1.48 |
| United States of America | 17,693 | 2.19 | 58,210 | 1.10 |
| Rest of America | 26,661 | 3.29 | 108,296 | 2.05 |
| African countries | 6,848 | 0.85 | 31,378 | 0.59 |
| Other countries | 31,487 | 3.89 | 95,392 | 1.80 |

**Tourist Accommodation Occupancy Survey
Campsite Occupancy Survey (COS)**

September 2019

Provisional data

31st October 2019

1. Travellers, overnight stays and average stay by category of establishment

| Category | Travellers | | | Overnight stays | | | Average stay |
|------------------------|------------|--------------------|------------------|-----------------|--------------------|------------------|--------------|
| | Total | Residents in Spain | Residents abroad | Total | Residents in Spain | Residents abroad | |
| TOTAL | 818,723 | 496,878 | 321,844 | 3,790,271 | 1,913,598 | 1,876,673 | 4.63 |
| Luxury and first-class | 380,658 | 220,732 | 159,926 | 1,767,025 | 845,911 | 921,114 | 4.64 |
| Second-class | 367,313 | 224,917 | 142,396 | 1,739,675 | 872,947 | 866,728 | 4.74 |
| Third-class | 70,752 | 51,229 | 19,523 | 283,570 | 194,739 | 88,831 | 4.01 |
| Annual rate | -1.79 | -7.50 | 8.56 | 0.59 | -4.48 | 6.34 | 2.42 |
| Cumulative annual rate | 4.57 | 5.50 | 2.78 | 2.71 | 4.05 | 1.20 | -1.78 |

2. Open establishments, capacity, occupancy and number of staff by category of establishments

| Category | Estimated open establishments | Capacity | | Occupied pitches | Occupancy rate per pitch | Weekend occupancy rate | Employed personnel |
|------------------------|-------------------------------|---------------------|-------------------|------------------|--------------------------|------------------------|--------------------|
| | | Estimated bedplaces | Estimated pitches | | | | |
| TOTAL | 1,010 | 674,487 | 205,228 | 2,350,644 | 38.18 | 41.12 | 9,486 |
| Luxury and first-class | 266 | 289,305 | 85,268 | 990,432 | 38.72 | 41.11 | 4,445 |
| Second-class | 558 | 315,389 | 98,807 | 1,121,979 | 37.85 | 41.45 | 4,223 |
| Third-class | 186 | 69,793 | 21,153 | 238,234 | 37.54 | 39.67 | 817 |
| Annual rate | 0.23 | -0.82 | -0.96 | 1.59 | 2.58 | 4.74 | 4.09 |
| Cumulative annual rate | -0.15 | -0.54 | -0.66 | 1.12 | 1.84 | 1.92 | 2.00 |

3. Travellers, overnight stays and average stay by Autonomous Cities and Communities

| Autonomous cities and communities | Travellers | | | Overnight stays | | | Average stay |
|-----------------------------------|------------|--------------------|------------------|-----------------|--------------------|------------------|--------------|
| | Total | Residents in Spain | Residents abroad | Total | Residents in Spain | Residents abroad | |
| TOTAL | 818,723 | 496,878 | 321,844 | 3,790,271 | 1,913,598 | 1,876,673 | 4.63 |
| Andalucía | 100,732 | 65,351 | 35,381 | 381,452 | 244,224 | 137,227 | 3.79 |
| Aragón | 36,914 | 19,403 | 17,511 | 101,411 | 55,624 | 45,788 | 2.75 |
| Asturias, Principado de | 19,842 | 11,541 | 8,301 | 71,873 | 57,798 | 14,075 | 3.62 |
| Balears, Illes | 6,547 | 3,081 | 3,466 | 35,541 | 12,695 | 22,846 | 5.43 |
| Canarias | 2,283 | 2,072 | 211 | 8,224 | 5,070 | 3,154 | 3.60 |
| Cantabria | 28,832 | 18,053 | 10,778 | 134,905 | 109,604 | 25,301 | 4.68 |
| Castilla y León | 29,085 | 14,615 | 14,470 | 65,420 | 41,103 | 24,318 | 2.25 |
| Castilla - La Mancha | 8,284 | 5,715 | 2,569 | 18,377 | 13,574 | 4,803 | 2.22 |
| Cataluña | 363,254 | 225,583 | 137,671 | 1,889,974 | 861,854 | 1,028,119 | 5.20 |
| Comunitat Valenciana | 82,234 | 45,565 | 36,668 | 634,806 | 218,820 | 415,986 | 7.72 |
| Extremadura | 9,562 | 7,107 | 2,455 | 25,000 | 19,519 | 5,482 | 2.61 |
| Galicia | 31,336 | 18,344 | 12,992 | 105,748 | 76,793 | 28,955 | 3.37 |
| Madrid, Comunidad de | 23,709 | 18,433 | 5,277 | 77,521 | 64,725 | 12,796 | 3.27 |
| Murcia, Región de | 11,044 | 6,489 | 4,555 | 65,650 | 26,481 | 39,169 | 5.94 |
| Navarra, Comunidad Foral de | 16,281 | 10,792 | 5,489 | 49,421 | 39,883 | 9,538 | 3.04 |
| País Vasco | 33,429 | 11,483 | 21,946 | 92,069 | 36,250 | 55,819 | 2.75 |
| Rioja, La | 15,355 | 13,251 | 2,104 | 32,879 | 29,581 | 3,298 | 2.14 |
| Ceuta | - | - | - | - | - | - | - |
| Melilla | - | - | - | - | - | - | - |

4. Open establishments, capacity, occupancy and number of staff by autonomous cities and communities

| Autonomous cities and communities | Estimated open establishments | Capacity | | Occupied pitches | Occupancy rate per pitch | Weekend occupancy rate | Employed personnel |
|-----------------------------------|-------------------------------|---------------------|-------------------|------------------|--------------------------|------------------------|--------------------|
| | | Estimated bedplaces | Estimated pitches | | | | |
| TOTAL | 1,010 | 674,487 | 205,228 | 2,350,644 | 38.18 | 41.12 | 9,486 |
| Andalucía | 138 | 78,503 | 25,235 | 196,407 | 25.94 | 30.37 | 1,131 |
| Aragón | 85 | 31,090 | 9,347 | 74,095 | 26.42 | 29.01 | 484 |
| Asturias, Principado de | 42 | 22,144 | 6,958 | 59,920 | 28.71 | 31.95 | 213 |
| Balears, Illes | 8 | 3,197 | 1,403 | 12,935 | 30.73 | 33.00 | 101 |
| Canarias | 5 | 3,401 | 1,418 | 7,367 | 17.32 | 21.80 | 22 |
| Cantabria | 38 | 30,905 | 9,722 | 100,405 | 34.43 | 37.21 | 251 |
| Castilla y León | 67 | 29,809 | 9,108 | 62,626 | 22.92 | 26.41 | 262 |
| Castilla - La Mancha | 27 | 10,919 | 3,127 | 20,565 | 21.92 | 27.55 | 153 |
| Cataluña | 280 | 281,103 | 81,744 | 1,086,705 | 44.31 | 45.93 | 3,996 |
| Comunitat Valenciana | 126 | 79,984 | 24,898 | 387,754 | 51.91 | 57.62 | 1,438 |
| Extremadura | 23 | 8,344 | 2,735 | 22,199 | 27.06 | 32.92 | 151 |
| Galicia | 82 | 29,299 | 9,287 | 54,397 | 19.52 | 22.09 | 395 |
| Madrid, Comunidad de | 20 | 18,057 | 6,222 | 89,990 | 48.21 | 46.76 | 276 |
| Murcia, Región de | 16 | 14,590 | 4,804 | 41,430 | 28.75 | 29.78 | 193 |
| Navarra, Comunidad Foral de | 25 | 14,529 | 3,705 | 44,741 | 40.25 | 37.00 | 179 |
| País Vasco | 20 | 10,315 | 3,080 | 42,488 | 45.98 | 56.93 | 166 |
| Rioja, La | 8 | 8,299 | 2,434 | 46,620 | 63.85 | 69.99 | 75 |
| Ceuta | - | - | - | - | - | - | - |
| Melilla | - | - | - | - | - | - | - |

5. Travellers and overnight stays, average stay, capacity, occupancy and number of staff by provinces with the greatest number of overnight stays¹

| Provinces | Travellers | | Overnight stays | | Average stay | Estimated open establishments | Estimated pitches | Occupancy rate per pitch | Employed personnel |
|--------------------|--------------------|------------------|--------------------|------------------|--------------|-------------------------------|-------------------|--------------------------|--------------------|
| | Residents in Spain | Residents abroad | Residents in Spain | Residents abroad | | | | | |
| | Spain | | Spain | | | | | | |
| Girona | 69,147 | 66,972 | 258,136 | 541,144 | 5.87 | 112 | 36,358 | 38.68 | 1,930 |
| Tarragona | 90,317 | 44,264 | 380,168 | 358,790 | 5.49 | 59 | 23,461 | 52.81 | 1,271 |
| Alicante/Alacant | 22,604 | 16,133 | 106,958 | 264,981 | 9.60 | 51 | 11,679 | 59.35 | 831 |
| Barcelona | 50,217 | 23,318 | 178,386 | 121,205 | 4.07 | 59 | 15,104 | 48.33 | 611 |
| Castellón/Castelló | 9,709 | 13,150 | 53,635 | 107,640 | 7.06 | 39 | 6,835 | 46.99 | 323 |
| Cádiz | 21,944 | 7,465 | 90,444 | 25,202 | 3.93 | 27 | 6,641 | 25.53 | 302 |
| Valencia/València | 13,252 | 7,386 | 58,226 | 43,365 | 4.92 | 35 | 6,384 | 43.57 | 284 |
| Málaga | 11,052 | 10,296 | 38,104 | 61,946 | 4.69 | 31 | 4,839 | 36.41 | 238 |
| Huelva | 14,955 | 2,972 | 69,570 | 6,398 | 4.24 | 9 | 4,461 | 24.39 | 190 |
| Huesca | 13,864 | 11,238 | 42,127 | 30,860 | 2.91 | 56 | 6,911 | 28.44 | 371 |
| Pontevedra | 13,098 | 6,562 | 54,935 | 12,202 | 3.41 | 34 | 5,047 | 22.08 | 230 |
| Gipuzkoa | 7,104 | 14,925 | 19,927 | 45,513 | 2.97 | 11 | 1,978 | 47.88 | 92 |
| Lleida | 15,903 | 3,117 | 45,164 | 6,981 | 2.74 | 50 | 6,821 | 36.20 | 183 |
| Coruña, A | 4,039 | 4,736 | 19,609 | 13,690 | 3.79 | 34 | 3,385 | 17.99 | 130 |
| Almería | 5,703 | 3,341 | 16,445 | 15,837 | 3.57 | 22 | 2,684 | 25.08 | 126 |

¹ Provinces belonging to uniprovincial Autonomous Communities have not been included because they are reflected in previous tables.

6. Travellers, overnight stays, average stay, open establishments, capacity, occupancy and number of staff from tourist areas with the greatest number of overnight stays

| Tourist areas | Travellers | | Overnight stays | | Average stay | Estimated open establishments | Estimated pitches | Occupancy rate per pitch | Employed personnel |
|----------------------------|--------------------|------------------|--------------------|------------------|--------------|-------------------------------|-------------------|--------------------------|--------------------|
| | Residents in Spain | Residents abroad | Residents in Spain | Residents abroad | | | | | |
| | Costa Brava | 57,379 | 65,751 | 233,734 | | | | | |
| Costa Daurada | 81,158 | 39,670 | 337,201 | 332,393 | 5.54 | 45 | 20,481 | 54.99 | 1,121 |
| Costa Blanca | 18,418 | 14,798 | 95,247 | 247,108 | 10.31 | 42 | 9,249 | 66.61 | 730 |
| pn Aiguamolls de l'Empordá | 7,659 | 28,066 | 57,009 | 244,638 | 8.44 | 20 | 9,043 | 52.23 | 565 |
| Costa Barcelona | 37,227 | 22,756 | 143,685 | 120,169 | 4.40 | 38 | 12,319 | 49.13 | 455 |
| Costa de Castellón | 8,073 | 12,567 | 47,072 | 104,837 | 7.36 | 31 | 6,069 | 49.46 | 290 |
| Costa de la Luz (Cádiz) | 21,269 | 6,963 | 89,300 | 23,634 | 4.00 | 23 | 6,008 | 25.57 | 283 |
| Pirineus | 33,898 | 4,003 | 87,603 | 9,794 | 2.57 | 79 | 10,501 | 40.17 | 388 |
| Costa del Sol | 9,409 | 7,190 | 34,323 | 54,362 | 5.34 | 15 | 3,501 | 42.13 | 169 |
| Costa Valencia | 7,797 | 5,389 | 43,870 | 35,839 | 6.04 | 18 | 4,300 | 48.70 | 209 |
| Rías Baixas | 14,794 | 8,106 | 60,430 | 14,971 | 3.29 | 43 | 6,403 | 19.74 | 288 |
| Costa de la Luz (Huelva) | 14,675 | 2,772 | 68,942 | 5,790 | 4.28 | 8 | 4,387 | 24.48 | 184 |
| Pirineo Aragonés | 13,639 | 10,939 | 41,541 | 30,632 | 2.94 | 52 | 6,633 | 27.53 | 360 |
| Terres de l'Ebre | 9,159 | 4,594 | 42,967 | 26,397 | 5.04 | 14 | 2,981 | 37.84 | 150 |
| Costa de Gipuzkoa | 7,104 | 14,925 | 19,927 | 45,513 | 2.97 | 11 | 1,978 | 47.88 | 92 |

7. Travellers, overnight stays, average stay, open establishments, capacity, occupancy and number of staff from tourist sites with the greatest number at overnights stays

| Tourist sites | Travellers | | Overnight stays | | Average stay | Estimated open establishments | Estimated pitches | Occupancy rate per pitch | Employed personnel |
|----------------------|--------------------|------------------|--------------------|------------------|--------------|-------------------------------|-------------------|--------------------------|--------------------|
| | Residents in Spain | Residents abroad | Residents in Spain | Residents abroad | | | | | |
| | Benidorm | 3,675 | 6,484 | 17,965 | | | | | |
| Mont-roig del Camp | 6,452 | 7,829 | 59,289 | 88,474 | 10.35 | 6 | 4,209 | 57.68 | 160 |
| Torroella de Montgrí | 3,826 | 11,228 | 18,268 | 111,321 | 8.61 | 8 | 4,234 | 48.86 | 251 |
| Tarragona | 14,632 | 6,965 | 71,474 | 44,114 | 5.35 | 6 | 2,936 | 58.70 | 323 |
| Sant Pere Pescador | 2,618 | 11,573 | 5,903 | 107,316 | 7.98 | 7 | 3,599 | 42.43 | 439 |
| Castelló d'Empúries | 1,975 | 5,977 | 20,425 | 67,810 | 11.10 | 4 | 2,807 | 53.17 | 140 |
| Cambrils | 9,999 | 4,850 | 50,366 | 35,420 | 5.78 | 6 | 3,124 | 60.86 | 203 |
| Blanes | 9,467 | 4,768 | 26,700 | 50,147 | 5.40 | 10 | 3,172 | 50.09 | 207 |
| Vilanova i la Geltrú | 8,283 | 5,325 | 19,850 | 38,303 | 4.27 | 3 | 2,644 | 44.28 | 95 |
| Calonge | 3,612 | 4,209 | 13,368 | 43,188 | 7.23 | 4 | 2,717 | 24.69 | 132 |
| Roda de Berà | 5,016 | 1,623 | 24,681 | 25,410 | 7.54 | 3 | 1,973 | 42.64 | 44 |
| Escala, L' | 2,200 | 3,796 | 20,292 | 23,062 | 7.23 | 5 | 1,894 | 39.39 | 68 |

8. Travellers and overnight stays by countries of residence

| Countries | Travellers | | Overnight stays | |
|---|------------|--------|-----------------|--------|
| | Total | % | Total | % |
| TOTAL | 818,723 | 100.00 | 3,790,271 | 100.00 |
| Residents in Spain | 496,878 | 60.69 | 1,913,598 | 50.49 |
| Residents abroad | 321,844 | 39.31 | 1,876,673 | 49.51 |
| TOTAL residents abroad | 321,844 | 100.00 | 1,876,673 | 100.00 |
| TOTAL residents in EU (excluding Spain) | 295,807 | 91.91 | 1,776,677 | 94.67 |
| - Germany | 75,536 | 23.47 | 401,828 | 21.41 |
| - Austria | 2,598 | 0.81 | 8,272 | 0.44 |
| - Belgium | 13,631 | 4.24 | 98,219 | 5.23 |
| - Denmark | 1,906 | 0.59 | 12,630 | 0.67 |
| - Finland | 544 | 0.17 | 3,824 | 0.20 |
| - France | 77,242 | 24.00 | 386,330 | 20.59 |
| - Greece | 41 | 0.01 | 137 | 0.01 |
| - Ireland | 6,278 | 1.95 | 38,139 | 2.03 |
| - Italy | 6,816 | 2.12 | 22,136 | 1.18 |
| - Luxembourg | 498 | 0.15 | 3,483 | 0.19 |
| - Netherlands | 46,104 | 14.33 | 353,405 | 18.83 |
| - Poland | 3,382 | 1.05 | 19,881 | 1.06 |
| - Portugal | 8,044 | 2.50 | 22,324 | 1.19 |
| - United Kingdom | 46,453 | 14.43 | 377,936 | 20.14 |
| - Czech Republic | 1,955 | 0.61 | 5,544 | 0.30 |
| - Sweden | 2,743 | 0.85 | 14,415 | 0.77 |
| - Other EU countries | 2,037 | 0.63 | 8,175 | 0.44 |
| Norway | 863 | 0.27 | 6,201 | 0.33 |
| Russia | 744 | 0.23 | 3,825 | 0.20 |
| Switzerland | 13,546 | 4.21 | 58,911 | 3.14 |
| Other European countries | 3,300 | 1.03 | 9,684 | 0.52 |
| United States of America | 859 | 0.27 | 2,014 | 0.11 |
| Rest of America | 1,804 | 0.56 | 5,262 | 0.28 |
| African countries | 281 | 0.09 | 1,072 | 0.06 |
| Other countries | 4,641 | 1.44 | 13,027 | 0.69 |

COS (TABLES ANNEX) - September 2019. Provisional data (4/4)

**Tourist accommodation occupancy survey
(Rural tourist accommodation)**

September 2019

Provisional data

31st October 2019

1. Number of travellers, overnight stays and average stay by Autonomous City and Community

| Autonomous Communities | Number of travellers | | | Number of overnight stays | | | Average stay |
|-----------------------------|----------------------|--------------------|------------------|---------------------------|--------------------|------------------|--------------|
| | Total | Residents In Spain | Residents abroad | Total | Residents In Spain | Residents abroad | |
| TOTAL | 415,812 | 294,216 | 121,595 | 1,057,679 | 664,687 | 392,992 | 2.54 |
| Andalucía | 35,566 | 19,703 | 15,863 | 133,963 | 46,553 | 87,409 | 3.77 |
| Aragón | 15,947 | 13,330 | 2,617 | 40,944 | 33,288 | 7,656 | 2.57 |
| Asturias, Principado de | 32,366 | 27,525 | 4,841 | 94,881 | 80,368 | 14,513 | 2.93 |
| Balears, Illes | 47,545 | 6,686 | 40,859 | 185,792 | 19,959 | 165,833 | 3.91 |
| Canarias | 5,514 | 2,799 | 2,715 | 24,489 | 8,402 | 16,087 | 4.44 |
| Cantabria | 27,385 | 22,096 | 5,289 | 63,799 | 53,422 | 10,377 | 2.33 |
| Castilla y León | 68,836 | 57,349 | 11,487 | 139,158 | 122,364 | 16,794 | 2.02 |
| Castilla-La Mancha | 25,804 | 23,139 | 2,665 | 51,779 | 47,007 | 4,771 | 2.01 |
| Cataluña | 42,601 | 35,054 | 7,547 | 93,100 | 71,055 | 22,045 | 2.19 |
| Comunitat Valenciana | 11,504 | 9,911 | 1,593 | 25,404 | 20,396 | 5,008 | 2.21 |
| Extremadura | 19,927 | 18,130 | 1,797 | 41,765 | 37,882 | 3,883 | 2.10 |
| Galicia | 29,307 | 16,518 | 12,789 | 46,640 | 30,091 | 16,549 | 1.59 |
| Madrid, Comunidad de | 14,765 | 11,737 | 3,028 | 23,431 | 19,591 | 3,841 | 1.59 |
| Murcia, Región de | 3,801 | 3,124 | 678 | 8,072 | 6,716 | 1,356 | 2.12 |
| Navarra, Comunidad Foral de | 11,617 | 10,665 | 952 | 32,633 | 30,090 | 2,543 | 2.81 |
| País Vasco | 19,625 | 13,422 | 6,203 | 44,493 | 31,699 | 12,795 | 2.27 |
| Rioja, La | 3,702 | 3,027 | 675 | 7,336 | 5,804 | 1,532 | 1.98 |
| Ceuta | - | - | - | - | - | - | - |
| Melilla | - | - | - | - | - | - | - |
| Annual rate | -1.90 | -5.39 | 7.69 | 0.02 | -2.10 | 3.80 | 1.95 |
| Cumulative annual rate | 3.68 | 4.11 | 2.19 | 2.44 | 4.09 | -1.34 | -1.20 |

2. Open rural establishments, bed-places, occupancy rates and employed personnel by Autonomous City and Community

| Autonomous Communities | Estimated open rural establishments | Estimated bed-places | Occupancy rate | | | Employed personnel |
|-----------------------------|-------------------------------------|----------------------|----------------|--------------------------|-------------|--------------------|
| | | | Of bed-places | Of bed-places at weekend | Of bedrooms | |
| TOTAL | 17,934 | 175,522 | 20.01 | 35.62 | 25.26 | 27,663 |
| Andalucía | 2,577 | 21,238 | 21.00 | 31.67 | 30.09 | 3,703 |
| Aragón | 1,216 | 9,632 | 14.11 | 29.00 | 18.34 | 1,413 |
| Asturias, Principado de | 1,446 | 14,967 | 21.09 | 29.88 | 26.76 | 2,229 |
| Balears, Illes | 543 | 10,798 | 57.04 | 65.88 | 64.01 | 3,050 |
| Canarias | 563 | 3,560 | 22.91 | 28.81 | 34.92 | 806 |
| Cantabria | 500 | 7,844 | 26.95 | 44.55 | 32.45 | 862 |
| Castilla y León | 3,612 | 32,315 | 14.32 | 31.81 | 18.58 | 5,027 |
| Castilla-La Mancha | 1,685 | 14,482 | 11.90 | 32.42 | 14.87 | 2,153 |
| Cataluña | 2,038 | 18,328 | 16.88 | 40.29 | 21.12 | 2,711 |
| Comunitat Valenciana | 860 | 10,109 | 8.36 | 18.32 | 13.81 | 1,182 |
| Extremadura | 659 | 7,904 | 17.60 | 36.00 | 22.32 | 1,072 |
| Galicia | 491 | 6,372 | 24.25 | 34.52 | 27.37 | 923 |
| Madrid, Comunidad de | 242 | 3,648 | 21.35 | 55.56 | 27.48 | 637 |
| Murcia, Región de | 163 | 2,533 | 10.61 | 23.99 | 14.87 | 278 |
| Navarra, Comunidad Foral de | 840 | 6,420 | 16.88 | 35.31 | 19.77 | 996 |
| País Vasco | 379 | 4,177 | 35.00 | 50.88 | 39.62 | 488 |
| Rioja, La | 120 | 1,195 | 20.20 | 51.57 | 19.65 | 136 |
| Ceuta | - | - | - | - | - | - |
| Melilla | - | - | - | - | - | - |
| Annual rate | 2.60 | 3.00 | -2.82 | 4.45 | -0.73 | 4.64 |
| Cumulative annual rate | 2.06 | 2.07 | 0.51 | 0.19 | 1.45 | 3.73 |

3. Number of travellers, overnight stays and average stay in Provinces with the greatest number of overnight stays¹

| Provinces | Number of travellers | | | Number of overnight stays | | | Average stay |
|---------------------|----------------------|--------------------|------------------|---------------------------|--------------------|------------------|--------------|
| | Total | Residents In Spain | Residents abroad | Total | Residents In Spain | Residents abroad | |
| Málaga | 14,553 | 4,922 | 9,631 | 81,995 | 14,353 | 67,642 | 5.63 |
| Girona | 18,142 | 14,362 | 3,781 | 42,704 | 30,747 | 11,958 | 2.35 |
| Cáceres | 15,887 | 14,723 | 1,164 | 33,506 | 30,954 | 2,552 | 2.11 |
| Barcelona | 14,140 | 11,817 | 2,323 | 29,949 | 23,936 | 6,012 | 2.12 |
| Ávila | 9,978 | 9,220 | 758 | 23,740 | 21,923 | 1,816 | 2.38 |
| Gipuzkoa | 9,788 | 6,461 | 3,326 | 22,923 | 16,058 | 6,865 | 2.34 |
| Huesca | 8,539 | 6,634 | 1,905 | 22,362 | 16,809 | 5,554 | 2.62 |
| Burgos | 10,228 | 7,312 | 2,917 | 22,207 | 18,456 | 3,751 | 2.17 |
| León | 12,402 | 8,008 | 4,394 | 20,034 | 14,860 | 5,175 | 1.62 |
| Segovia | 9,353 | 8,724 | 629 | 19,386 | 18,366 | 1,020 | 2.07 |
| St Cruz de Tenerife | 4,061 | 1,897 | 2,165 | 19,344 | 6,014 | 13,330 | 4.76 |
| Coruña, A | 10,429 | 5,353 | 5,076 | 15,291 | 8,886 | 6,405 | 1.47 |
| Bizkaia | 6,574 | 4,321 | 2,253 | 14,514 | 9,685 | 4,829 | 2.21 |
| Soria | 7,229 | 6,899 | 331 | 14,258 | 13,553 | 705 | 1.97 |
| Lugo | 9,197 | 3,970 | 5,227 | 13,234 | 7,061 | 6,173 | 1.44 |

¹ Provinces belonging to uniprovincial Autonomous Communities have not been included because they are reflected in previous tables.

4. Open rural establishments, bed-places, occupancy rates and employed personnel in Provinces with the highest number of overnight stays¹

| Provinces | Estimated open rural establishments | Estimated bed-places | Occupancy rate | | | Employed personnel |
|---------------------|-------------------------------------|----------------------|----------------|--------------------------|-------------|--------------------|
| | | | Of bed-places | Of bed-places at weekend | Of bedrooms | |
| Málaga | 1,495 | 10,161 | 26.87 | 35.58 | 40.33 | 2,007 |
| Girona | 642 | 6,630 | 21.41 | 45.79 | 27.00 | 771 |
| Cáceres | 523 | 6,343 | 17.59 | 35.76 | 21.79 | 869 |
| Barcelona | 599 | 5,242 | 18.95 | 48.26 | 23.43 | 959 |
| Ávila | 736 | 5,906 | 13.38 | 34.15 | 17.13 | 894 |
| Gipuzkoa | 175 | 1,984 | 38.00 | 51.10 | 43.60 | 220 |
| Huesca | 646 | 4,954 | 15.00 | 27.43 | 19.83 | 746 |
| Burgos | 435 | 4,397 | 16.79 | 32.83 | 26.50 | 546 |
| León | 499 | 4,190 | 15.91 | 25.92 | 20.08 | 735 |
| Segovia | 443 | 4,161 | 15.49 | 42.45 | 18.54 | 621 |
| St Cruz de Tenerife | 461 | 2,691 | 23.94 | 29.66 | 37.61 | 637 |
| Coruña, A | 140 | 1,832 | 27.67 | 32.94 | 30.93 | 265 |
| Bizkaia | 113 | 1,273 | 37.55 | 52.93 | 42.27 | 153 |
| Soria | 321 | 3,077 | 15.38 | 38.31 | 17.16 | 391 |
| Lugo | 129 | 1,674 | 26.13 | 35.77 | 29.61 | 288 |

¹ Provinces belonging to uniprovincial Autonomous Communities have not been included because they are reflected in previous tables.

5. Number of travellers, overnight stays, average stay, capacity and occupancy rates in areas with the highest number of overnight stays

| Areas | Number of travellers | | Number of overnight stays | | | Capacity | | Occupancy rate | | |
|--|----------------------|------------------|---------------------------|------------------|--------------|---------------------------------|----------------------|----------------|--------------------------|-------------|
| | Residents In Spain | Residents abroad | Residents In Spain | Residents abroad | Average stay | Estimated open rural establish. | Estimated bed-places | Of bed-places | Of bed-places at weekend | Of bedrooms |
| Isla de Mallorca | 4,004 | 33,307 | 11,910 | 139,063 | 4.05 | 442 | 8,818 | 56.79 | 64.83 | 64.20 |
| Costa Verde (Asturias) | 9,904 | 1,971 | 29,477 | 4,668 | 2.88 | 524 | 5,986 | 18.99 | 27.63 | 23.62 |
| Sierras de Tejada, Almirajara y Alhama | 1,739 | 5,237 | 4,873 | 26,871 | 4.55 | 510 | 3,001 | 35.21 | 41.80 | 57.00 |
| Costa Brava | 9,740 | 3,445 | 20,430 | 11,219 | 2.40 | 407 | 4,212 | 24.98 | 48.79 | 31.69 |
| Pirineus | 12,022 | 956 | 25,813 | 2,641 | 2.19 | 793 | 6,712 | 14.09 | 38.74 | 16.95 |
| P.Nacional Picos de Europa | 9,771 | 1,563 | 24,149 | 3,930 | 2.48 | 337 | 3,178 | 29.39 | 40.81 | 34.54 |
| Extremadura Norte | 11,892 | 645 | 25,203 | 1,523 | 2.13 | 356 | 4,430 | 20.09 | 38.87 | 24.32 |
| Pirineo Navarro | 8,325 | 826 | 24,142 | 1,951 | 2.85 | 697 | 5,314 | 16.29 | 32.84 | 19.12 |
| Isla de Menorca | 2,348 | 5,020 | 6,878 | 16,286 | 3.14 | 66 | 1,238 | 61.99 | 68.83 | 66.44 |
| Pirineo Aragonés | 6,214 | 1,901 | 16,125 | 5,506 | 2.67 | 604 | 4,683 | 15.36 | 28.82 | 20.50 |
| Costa del Sol (Málaga) | 1,772 | 1,174 | 6,002 | 14,596 | 6.99 | 257 | 1,706 | 40.26 | 59.42 | 54.65 |
| Costa de Gipuzkoa | 2,838 | 2,094 | 7,133 | 4,630 | 2.39 | 67 | 751 | 51.59 | 60.42 | 58.08 |
| Islas de Ibiza-Formentera | 333 | 2,532 | 1,170 | 10,484 | 4.07 | 35 | 741 | 51.75 | 73.48 | 57.46 |
| Rías Baixas | 4,000 | 2,110 | 8,040 | 3,104 | 1.82 | 127 | 1,598 | 23.11 | 34.09 | 27.34 |
| Parque Nacional Sierra de Guadarrama | 5,831 | 354 | 9,495 | 577 | 1.63 | 111 | 1,535 | 21.84 | 62.69 | 25.50 |

6. Number of travellers, overnight stays, average stay, capacity, occupancy rates and employed personnel per rural house by Autonomous City and Community²

| Autonomous Communities | Number of travellers | | Number of overnight stays | | | Capacity | | Occupancy rate | | Employed personnel |
|-----------------------------|----------------------|------------------|---------------------------|------------------|--------------|---------------------------------|----------------------|----------------|--------------------------|--------------------|
| | Residents In Spain | Residents abroad | Residents In Spain | Residents abroad | Average stay | Estimated open rural establish. | Estimated bed-places | Of bed-places | Of bed-places at weekend | |
| TOTAL | 186,971 | 60,306 | 437,069 | 212,482 | 2.63 | 15,194 | 127,507 | 16.93 | 32.73 | 20,161 |
| Andalucía | 19,692 | 15,648 | 46,527 | 86,922 | 3.78 | 2,575 | 21,122 | 21.04 | 31.67 | 3,699 |
| Aragón | 11,073 | 2,241 | 27,716 | 6,491 | 2.57 | 985 | 7,598 | 14.94 | 30.71 | 1,169 |
| Asturias, Principado de | 10,716 | 1,217 | 32,751 | 3,747 | 3.06 | 874 | 6,120 | 19.82 | 29.04 | 1,118 |
| Balears, Illes | 2,404 | 12,707 | 6,440 | 44,319 | 3.36 | 196 | 3,168 | 53.31 | 64.32 | 661 |
| Canarias | 1,401 | 1,470 | 5,658 | 10,955 | 5.79 | 535 | 2,770 | 19.98 | 24.61 | 662 |
| Cantabria | 5,146 | 433 | 14,874 | 2,004 | 3.03 | 239 | 2,982 | 18.85 | 31.40 | 354 |
| Castilla y León | 29,583 | 1,419 | 74,964 | 3,416 | 2.53 | 3,209 | 23,969 | 10.88 | 26.83 | 3,854 |
| Castilla-La Mancha | 21,908 | 2,544 | 44,983 | 4,614 | 2.03 | 1,653 | 13,598 | 12.13 | 32.76 | 2,105 |
| Cataluña | 35,054 | 7,547 | 71,055 | 22,045 | 2.19 | 2,038 | 18,328 | 16.88 | 40.29 | 2,711 |
| Comunitat Valenciana | 7,950 | 1,434 | 17,071 | 4,620 | 2.31 | 811 | 7,281 | 9.91 | 21.49 | 1,022 |
| Extremadura | 8,543 | 721 | 16,690 | 1,690 | 1.98 | 432 | 4,178 | 14.65 | 34.39 | 618 |
| Galicia | 9,567 | 8,083 | 19,194 | 10,829 | 1.70 | 352 | 4,278 | 23.27 | 33.33 | 588 |
| Madrid, Comunidad de | 1,632 | 8 | 5,450 | 14 | 3.33 | 93 | 940 | 19.34 | 43.84 | 86 |
| Murcia, Región de | 2,072 | 146 | 5,122 | 412 | 2.50 | 146 | 2,107 | 8.75 | 22.91 | 221 |
| Navarra, Comunidad Foral de | 8,879 | 588 | 23,941 | 1,653 | 2.70 | 708 | 5,392 | 15.76 | 34.00 | 849 |
| País Vasco | 8,324 | 3,425 | 18,832 | 7,220 | 2.22 | 229 | 2,481 | 34.43 | 49.95 | 309 |
| Rioja, La | 3,027 | 675 | 5,804 | 1,532 | 1.98 | 120 | 1,195 | 20.20 | 51.57 | 136 |
| Ceuta | - | - | - | - | - | - | - | - | - | - |
| Melilla | - | - | - | - | - | - | - | - | - | - |

² To facilitate the comparability between data from different Autonomous Communities (and because of the different regulation and different characteristics),

a group called rural house has been created, with those establishments with similar typology (location, capacity, etc...).

The variables included in the previous table have been estimated with that type of establishments.

9. Travellers and overnight stays by country of residence

| Results by countries | Travellers | | Overnight stays | |
|---|------------|--------|-----------------|--------|
| | Total | % | Total | % |
| TOTAL | 415,812 | 100.00 | 1,057,679 | 100.00 |
| Residents in Spain | 294,216 | 70.76 | 664,687 | 62.84 |
| Residents abroad | 121,595 | 29.24 | 392,992 | 37.16 |
| Total Residents abroad | 121,595 | 100.00 | 392,992 | 100.00 |
| Total Residents in EU (excluding Spain) | 88,152 | 72.50 | 317,380 | 80.76 |
| - Germany | 24,610 | 20.24 | 110,628 | 28.15 |
| - Belgium | 4,206 | 3.46 | 13,434 | 3.42 |
| - France | 12,985 | 10.68 | 39,543 | 10.06 |
| - Italy | 3,378 | 2.78 | 8,132 | 2.07 |
| - Netherlands | 7,888 | 6.49 | 31,652 | 8.05 |
| - Portugal | 2,303 | 1.89 | 4,479 | 1.14 |
| - United Kingdom | 21,225 | 17.46 | 80,452 | 20.47 |
| Switzerland | 3,292 | 2.71 | 13,121 | 3.34 |
| Other European countries | 15,918 | 13.09 | 40,850 | 10.39 |
| United States of America | 9,093 | 7.48 | 19,198 | 4.89 |
| Other countries | 16,697 | 13.73 | 31,502 | 8.02 |

Tourist Accommodation Occupancy Survey Hostels Occupancy Survey (HOS)

September 2019

Provisional data

31st October 2019

1. Travellers, overnight stays and average stay by Autonomous Cities and Communities

| Autonomous cities and communities | Travellers | | | Overnight stays | | | Average stay |
|-----------------------------------|------------|--------------------|------------------|-----------------|--------------------|------------------|--------------|
| | Total | Residents in Spain | Residents abroad | Total | Residents in Spain | Residents abroad | |
| TOTAL | 85,319 | 48,704 | 36,616 | 206,231 | 116,654 | 89,577 | 2.42 |
| Andalucía | 14,331 | 12,368 | 1,963 | 38,623 | 34,596 | 4,027 | 2.70 |
| Aragón | 2,757 | 2,520 | 237 | 4,938 | 4,569 | 369 | 1.79 |
| Asturias, Principado de | 328 | 250 | 78 | 984 | 883 | 101 | 3.00 |
| Balears, Illes | 1,836 | 378 | 1,458 | 5,871 | 953 | 4,918 | 3.20 |
| Canarias | 2,079 | 705 | 1,374 | 8,602 | 2,067 | 6,535 | 4.14 |
| Cantabria | 1,258 | 975 | 283 | 2,679 | 2,107 | 572 | 2.13 |
| Castilla y León | 2,746 | 2,299 | 447 | 6,094 | 4,695 | 1,399 | 2.22 |
| Castilla - La Mancha | 1,742 | 1,579 | 163 | 3,876 | 3,373 | 504 | 2.23 |
| Cataluña | 31,486 | 14,525 | 16,961 | 80,289 | 36,047 | 44,242 | 2.55 |
| Comunitat Valenciana | 7,785 | 2,911 | 4,874 | 21,936 | 7,513 | 14,423 | 2.82 |
| Extremadura | 836 | 740 | 96 | 1,431 | 1,306 | 125 | 1.71 |
| Galicia | 1,792 | 784 | 1,008 | 3,039 | 1,914 | 1,125 | 1.70 |
| Madrid, Comunidad de | 3,975 | 778 | 3,197 | 6,685 | 1,376 | 5,309 | 1.68 |
| Murcia, Región de | 1,368 | 989 | 379 | 2,739 | 1,913 | 826 | 2.00 |
| Navarra, Comunidad Foral de | 2,998 | 1,590 | 1,408 | 5,060 | 3,598 | 1,462 | 1.69 |
| País Vasco | 6,530 | 4,584 | 1,946 | 10,936 | 8,334 | 2,602 | 1.67 |
| Rioja, La | 1,458 | 723 | 735 | 1,999 | 1,230 | 769 | 1.37 |
| Ceuta | - | - | - | - | - | - | - |
| Melilla | 15 | 6 | 9 | 450 | 180 | 270 | 30.00 |
| Annual rate | 4.99 | -3.97 | 19.86 | -2.79 | -7.84 | 4.68 | -7.41 |
| Cumulative annual rate | -0.37 | -5.13 | 10.26 | 3.37 | -0.46 | 12.92 | 3.76 |

2. Open establishments, capacity, occupancy and number of staff by autonomous cities and communities

| Autonomous cities and communities | Capacity | | Occupancy rate | | Employed personnel |
|-----------------------------------|-------------------------------|----------------------|----------------|--------------------------|--------------------|
| | Estimated open establishments | Estimated bed-places | Of bed-places | Of bed-places at weekend | |
| TOTAL | 243 | 25,338 | 27.13 | 31.62 | 1,787 |
| Andalucía | 17 | 3,383 | 38.06 | 23.52 | 260 |
| Aragón | 21 | 2,044 | 8.05 | 16.67 | 70 |
| Asturias, Principado de | 4 | 321 | 10.22 | 14.64 | 46 |
| Balears, Illes | 4 | 328 | 59.66 | 64.29 | 32 |
| Canarias | 29 | 682 | 42.02 | 39.28 | 55 |
| Cantabria | 7 | 562 | 15.89 | 29.98 | 35 |
| Castilla y León | 21 | 1,957 | 10.38 | 17.08 | 142 |
| Castilla - La Mancha | 26 | 2,867 | 4.51 | 7.77 | 64 |
| Cataluña | 46 | 6,045 | 44.27 | 54.52 | 397 |
| Comunitat Valenciana | 12 | 2,107 | 34.71 | 42.39 | 112 |
| Extremadura | 8 | 750 | 6.36 | 18.57 | 39 |
| Galicia | 5 | 478 | 21.20 | 24.52 | 117 |
| Madrid, Comunidad de | 3 | 388 | 57.48 | 77.84 | 159 |
| Murcia, Región de | 5 | 489 | 18.67 | 28.76 | 20 |
| Navarra, Comunidad Foral de | 10 | 702 | 24.04 | 23.28 | 69 |
| País Vasco | 17 | 1,853 | 19.67 | 22.76 | 126 |
| Rioja, La | 6 | 341 | 19.54 | 39.93 | 14 |
| Ceuta | - | - | - | - | - |
| Melilla | 1 | 40 | 37.50 | 37.50 | 30 |
| Annual rate | 0.77 | 1.18 | -3.92 | -2.80 | -1.03 |
| Cumulative annual rate | 2.29 | 1.71 | 1.71 | -3.12 | 0.11 |

3. Travellers and overnight stays by countries of residence

| Countries | Travellers | | Overnight stays | | Average stay |
|---|------------|--------|-----------------|--------|--------------|
| | Total | % | Total | % | |
| TOTAL | 85,319 | 100.00 | 206,231 | 100.00 | 2.42 |
| Residents in Spain | 48,704 | 57.08 | 116,654 | 56.56 | 2.40 |
| Residents abroad | 36,616 | 42.92 | 89,577 | 43.44 | 2.45 |
| TOTAL residents abroad | 36,616 | 100.00 | 89,577 | 100.00 | 2.45 |
| TOTAL residents in E.U. (excluding Spain) | 22,233 | 60.72 | 51,972 | 58.02 | 2.34 |
| - Germany | 5,324 | 14.54 | 14,512 | 16.20 | 2.73 |
| - Belgium | 617 | 1.68 | 1,352 | 1.51 | 2.19 |
| - France | 4,279 | 11.69 | 8,413 | 9.39 | 1.97 |
| - Italy | 3,505 | 9.57 | 8,469 | 9.45 | 2.42 |
| - Netherlands | 990 | 2.70 | 2,347 | 2.62 | 2.37 |
| - Portugal | 1,004 | 2.74 | 1,993 | 2.23 | 1.99 |
| - United Kingdom | 3,609 | 9.86 | 8,026 | 8.96 | 2.22 |
| Switzerland | 310 | 0.85 | 854 | 0.95 | 2.75 |
| Other European countries | 5,223 | 14.27 | 12,545 | 14.01 | 2.40 |
| United States of America | 2,158 | 5.89 | 4,638 | 5.18 | 2.15 |
| Other countries | 9,596 | 26.21 | 26,427 | 29.50 | 2.75 |

HOLIDAY DWELLING PRICE INDEX (HDPI)

September 2019

Provisional data

31st October 2019

National general index and breakdown by rates

| | Index | Annual variation rate |
|------------------------------------|--------|--------------------------|
| TOTAL | 142.91 | -0.25 |
| Normal | 133.14 | 1.35 |
| Weekend | 133.26 | -0.86 |
| Tour-operators and travel agencies | 152.25 | -1.57 |

National general index and breakdown by modalities

| | Index | Annual variation rate |
|-------------------------|--------|--------------------------|
| TOTAL | 142.91 | -0.25 |
| Studio | 139.99 | 0.48 |
| Dwellings 2/4 bedplaces | 145.28 | 0.15 |
| Dwellings 4/6 bedplaces | 138.69 | -1.65 |

Tourist Campsite Price Index (TCSPI). 2002 Base

September 2019

Provisional data

31st October 2019

National general index and breakdown by rates

| | Index | Annual variation rate |
|--|--------|--------------------------|
| TOTAL | 140.66 | 1.92 |
| Normal rate | 137.54 | -0.12 |
| Special rate for stays up to one month | 128.25 | 1.48 |
| Special rate for stays longer than one month | 147.06 | 1.34 |
| Bungalow rate ¹ | 105.87 | 3.75 |

¹2014 Base

National general index and breakdown by categories

| | Index | Annual variation rate |
|------------------|--------|--------------------------|
| TOTAL | 140.66 | 1.92 |
| Luxury and first | 134.72 | 1.11 |
| Second | 142.59 | 2.47 |
| Third | 167.11 | 4.88 |

Rural Tourism Accommodation Price Index (RTAPI)

September

Provisional data

31st October 2019

General Autonomous Cities and Communities and national indices

| | Index | Annual variation rate |
|-----------------------------|--------|-----------------------|
| TOTAL | 143.58 | 1.98 |
| Andalucía | 144.51 | 3.27 |
| Aragón | 167.73 | -1.60 |
| Asturias, Principado de | 135.05 | 4.44 |
| Balears, Illes | 139.31 | 0.86 |
| Canarias | 118.63 | 0.21 |
| Cantabria | 167.86 | 1.71 |
| Castilla y León | 134.11 | 3.11 |
| Castilla - La Mancha | 129.09 | -3.11 |
| Cataluña | 144.69 | 5.48 |
| Comunitat Valenciana | 140.36 | -3.79 |
| Extremadura | 98.56 | -4.95 |
| Galicia | 134.77 | 4.29 |
| Madrid, Comunidad de | 144.36 | 3.27 |
| Murcia, Región de | 141.79 | 15.75 |
| Navarra, Comunidad Foral de | 180.86 | -2.21 |
| País Vasco | 155.27 | 5.58 |
| Rioja, La | 136.28 | 10.58 |
| Ceuta | - | - |
| Melilla | - | - |

National general index and breakdown by rates

| | Index | Annual variation rate |
|---------|--------|-----------------------|
| TOTAL | 143.58 | 1.98 |
| Normal | 144.51 | 1.74 |
| Weekend | 144.94 | 2.21 |

National general index and breakdown by rent modality

| | Index | Annual variation rate |
|--|--------|-----------------------|
| TOTAL | 143.58 | 1.98 |
| Shared use (in case of per room rent modality) | 137.47 | 0.30 |
| Full use (rent of entire dwelling) | 146.52 | 3.28 |