

4 January 2021

Non-hotel Tourist Accommodation Occupancy Survey
November 2020. Provisional Data

Overnight stays in non-hotel tourist accommodation decreased by 75.0% in November, as compared to the same month of 2019

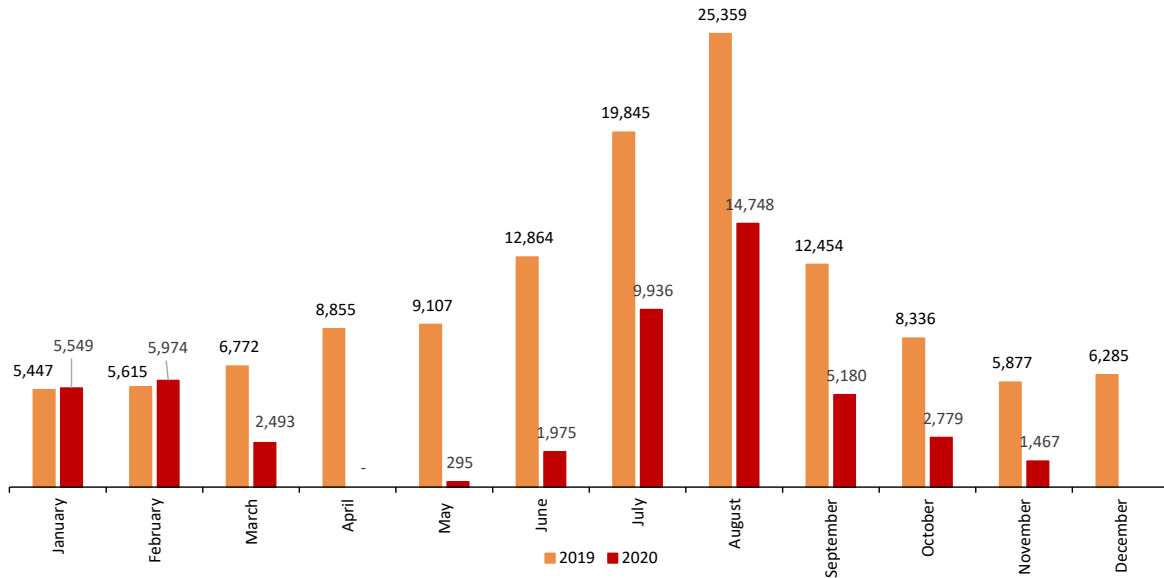
In the first 11 months of the year, overnight stays decreased by 58.2% in these establishments

Main results

- The number of non-hotel tourist lodgings open in November (tourist apartments, campsites, rural tourism accommodations and tourist hostels) decreased compared to October, from 100,922 to 85,601. They represented 33.3% less than in November 2019.
- More than 221 thousand travellers stayed at one of these establishments. They made 1.4 million overnight stays, 75.0% less in the annual rate.
- Travellers who are residents of Spain represent 70.4% of the total in this type of accommodation (149 thousand, compared to 62 thousand non-residents). The same cannot be said of overnight stays, where 54.1% were made by non-residents.
- Tourist apartments were the most-visited establishments, with more than 113 thousand travellers and 786 thousand overnight stays - 79.8% less than in November 2019. Of the overnight stays 45.9% corresponded to residents. Costa de Barcelona had the highest occupancy rate (53.9%), as well as the peak weekend occupancy rate (74.1%).
- A total of 525 overnight stays were made at campsites; 55.7% less than in the same month of 2019. The areas with the highest occupancy rate for campsites were Costa Blanca (57.3%) and Pirineus (47.6%).
- Rural tourism accommodates more than 39 thousand people, 92.0% of whom are residents in Spain. The highest weekend occupancy rates were registered in the Sierra de Guadarrama National Park (47.8%) and on the Island of Gran Canaria (25.9%).
- There were 50.3 million overnight stays in non-hotel tourist accommodations during the first 11 months of 2020, 58.2% less than the same period for 2019. Of these, 31.5 million were made by residents (-35.5%) and 18.8 million by non-residents (-73.7%).

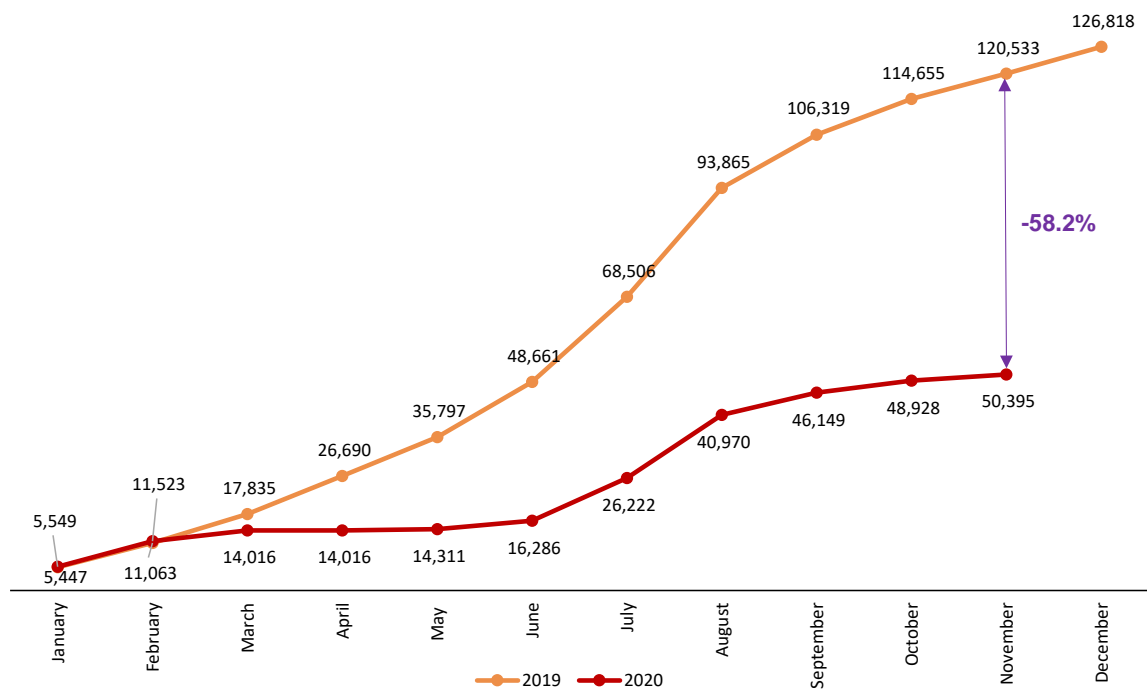
Overnight stays in non-hotel accommodation monthly. Comparative 2019-2020

Thousands

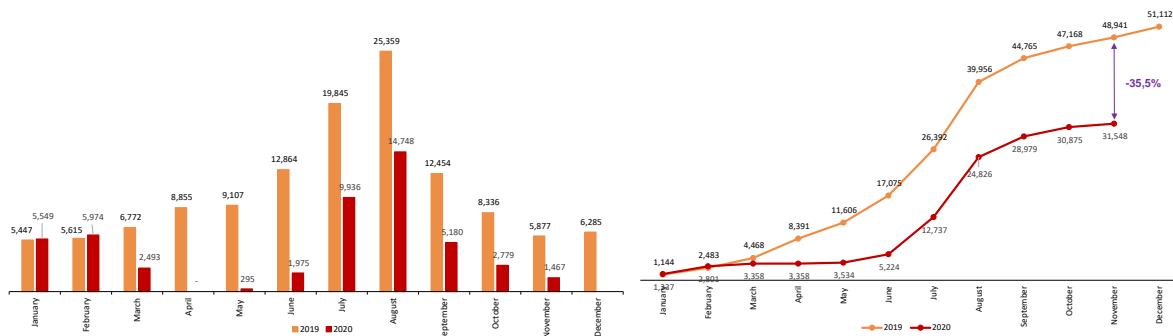


Accumulated overnight stays in non-hotel accommodation. Comparative 2019-2020

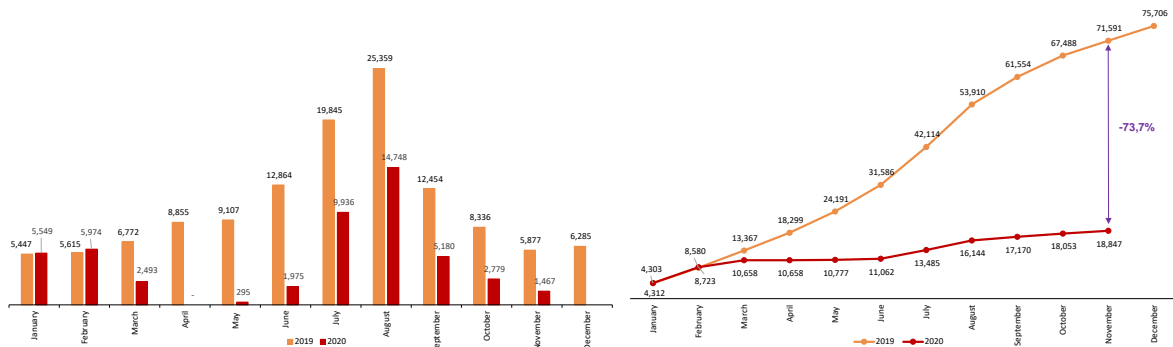
Thousands



Monthly and accumulated overnights of residents in Spain. Comparative 2019-2020 Thousands



Monthly and accumulated overnights of non-residents in Spain. Comparative 2019-2020 Thousands



Open establishments

In November, a total of 85,601 hotels were open in Spain, 33.3% less than in the same month of 2019. This represented 61.1% of the total directory of establishments for that month.

Type of accommodation	Number of open establishments according to the survey	Percentage of total establishments in the directory	Number of estimated places according to the survey	Percentage of total places in the directory
TOTAL	85,601	61.1%	655,115	61.1%
Holiday dwellings (*)	72,215	61.5%	281,311	63.2%
Campsites	399	56.3%	244,092	61.7%
Rural T.	12,879	59.3%	117,766	57.9%
Hostels	108	40.0%	11,946	43.6%
Annual rate	-33.3		-28.1	

(*) Estimated number of apartments

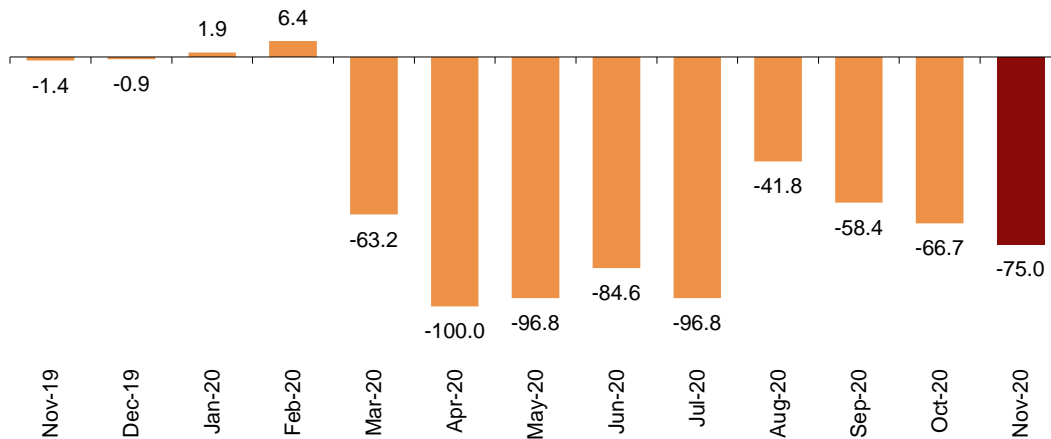
Overnight stays

Overnight stays in hotel establishments exceeded 1.4 million in November, with a decrease of 75.0% compared to the 5.8 million for the same month of 2019.

By traveller origin, overnight stays by residents of Spain decreased by 62.1% in the annual rate, exceeding 673 thousand. In turn, overnight stays by non-residents fell by 80.7%, to 793 thousand.

Annual variation rate for overnight stays

Percentage



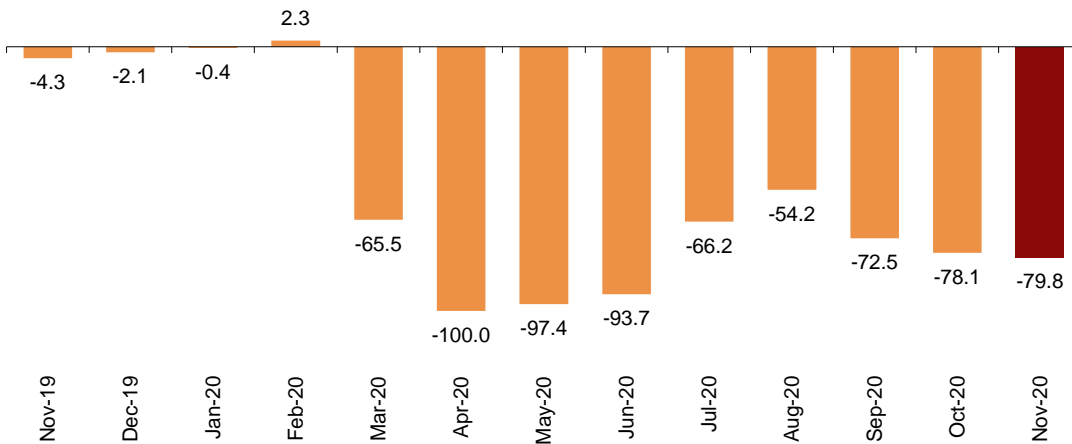
During the first 11 months of 2020, overnight stays decreased by 58.2% as compared with the same period of the previous year.

Holiday Dwellings

Overnight stays in holiday dwellings decreased by 79.8% in November in the annual rate. Resident overnight stays decreased by 50.8% and non-resident overnight stays did so by 86.5%.

Annual variation rate for overnight stays

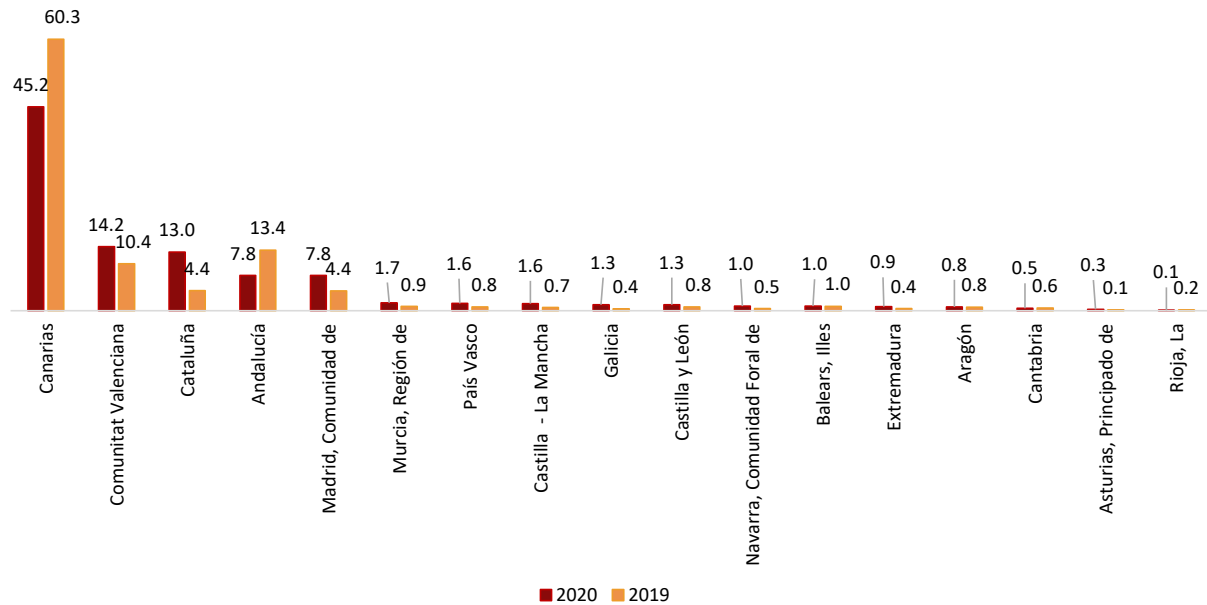
Percentage



Canarias, Comunitat Valenciana, and Cataluña were the main destinations for travellers in November, with annual variation rates in the number of overnight stays of -84.8%, -72.4% and -40.6%, respectively.

Distribution of total overnight stays. Comparative November 2019-2020

Percentage



By tourist areas, the Island of Tenerife was the preferred destination for tourist apartments, with 144,073 overnight stays and an occupancy rate of 25.4% for the apartments available.

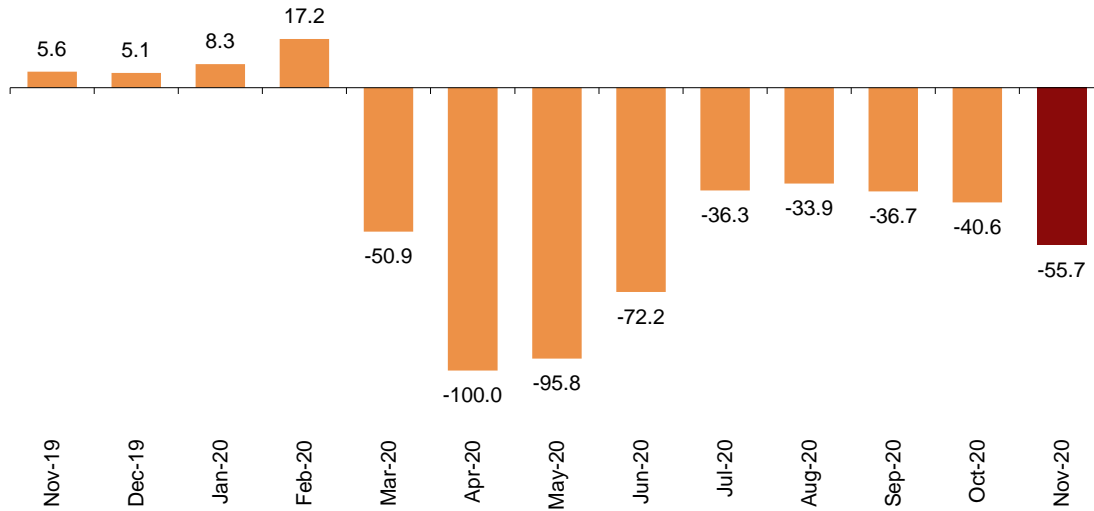
The tourist sites with the greatest number of overnight stays in November were San Bartolomé de Tirajana, Adeje and Arona.

Tourist Campsites

Overnight stays at tourist campsites registered a decrease of 55.7% in November as compared with the same month of the previous year. Resident overnight stays decreased by 53.6% and non-resident overnight stays did so by 56.8%.

Annual variation rate for overnight stays

Percentage



In November, 31.2% of the campsites offered were occupied, 15.2% more than in the same month of 2019. The weekend occupancy rate reached 30.1%, with a 22.8% annual decrease.

Comunitat Valenciana was the preferred destination for tourist campsites, with 307,798 overnight stays, representing an annual decrease of 47.4%. Cantabria reached the highest occupancy rate, with 60.0% of campsites offered.

By tourist areas, Costa Blanca was the preferred destination, with 195,131 overnight stays and an occupancy rate of 57.3% of the campsites offered.

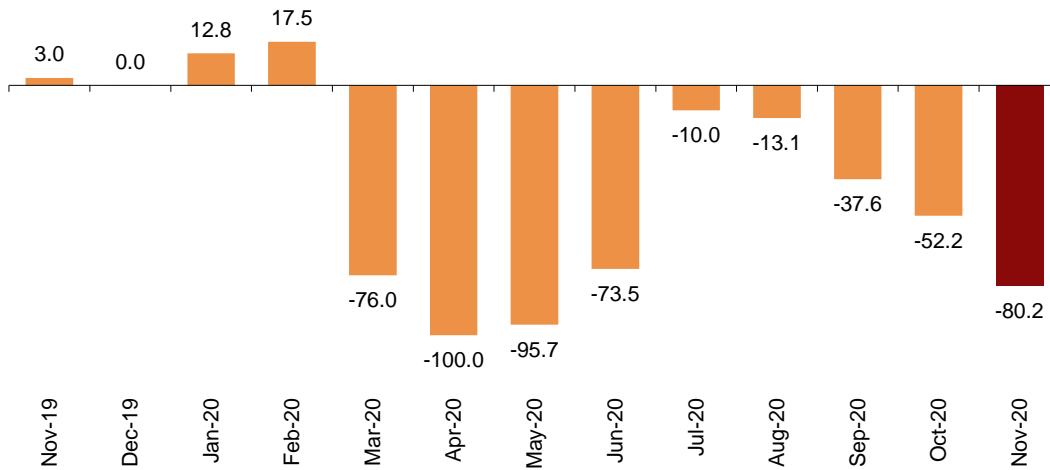
The tourist sites with the most overnight stays were Benidorm, Marbella and Cartagena.

Rural tourism accommodation

Overnight stays in rural tourism accommodation had an annual decrease of 80.2% in November. Resident overnight stays decreased by 79.8% and non-resident overnight stays did so by 82.3%.

Annual variation rate for overnight stays

Percentage



In rural tourism accommodations, 3.6% of bed-places were occupied, 72.7% less than in November 2019. The weekend occupancy rate stood at 5.6%, with a decrease of 80.8%.

By Autonomous Community, Comunitat Valenciana was the preferred destination, with 16,829 overnight stays, 45.8% less than in November 2019. Comunidad de Madrid reached the highest occupancy rate, with 16.7% of bed-places offered.

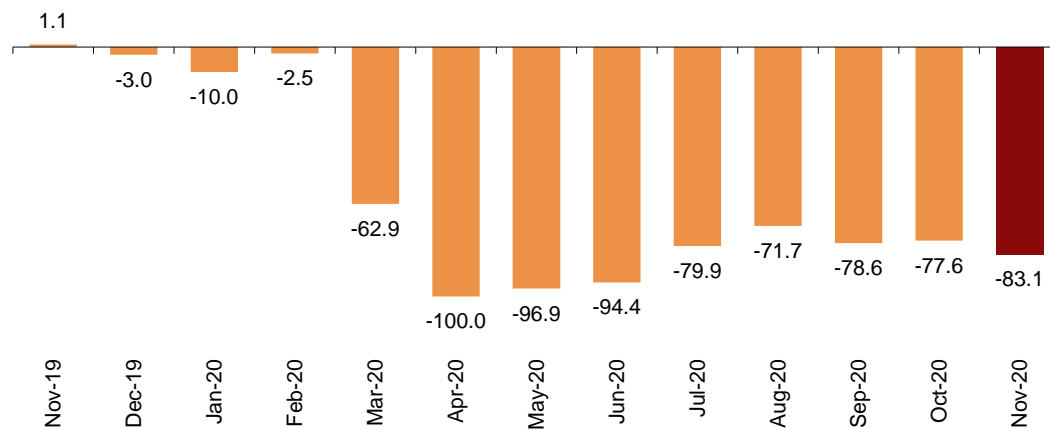
By tourist area, Sierra de Guadarrama National Park was the preferred destination, with 7,620 overnight stays. It also reached the highest occupancy rate, with 19.1% of bed-places offered.

Hostels

Overnight stays in hostels registered an annual decrease of 83.1% in November. Resident overnight stays decreased by 82.2% and non-resident overnight stays did so by 84.7%.

Annual variation rate for overnight stays

Percentage



In hostels, 7.4% of the available bed-places were occupied, 66.4% less than in November 2019. The weekend occupancy rate reached 9.7%, with a 65.4% decrease.

By Autonomous Community, Andalucía was the preferred destination, with 9,249 overnight stays, 66.4% less than in November 2019. Canarias reached the highest occupancy rate, with 45.0% of the bed-places offered.

Price indices

The Tourist Apartment Price Index (TAPI) decreased by 11.8% in November compared to the same month of 2019 and the Rural Tourism Accommodation Price Index (RTAPI) decreased by 1.6%.

On the other hand, the Tourist Campsite Price Index (TCPI) increased by 0.2%.

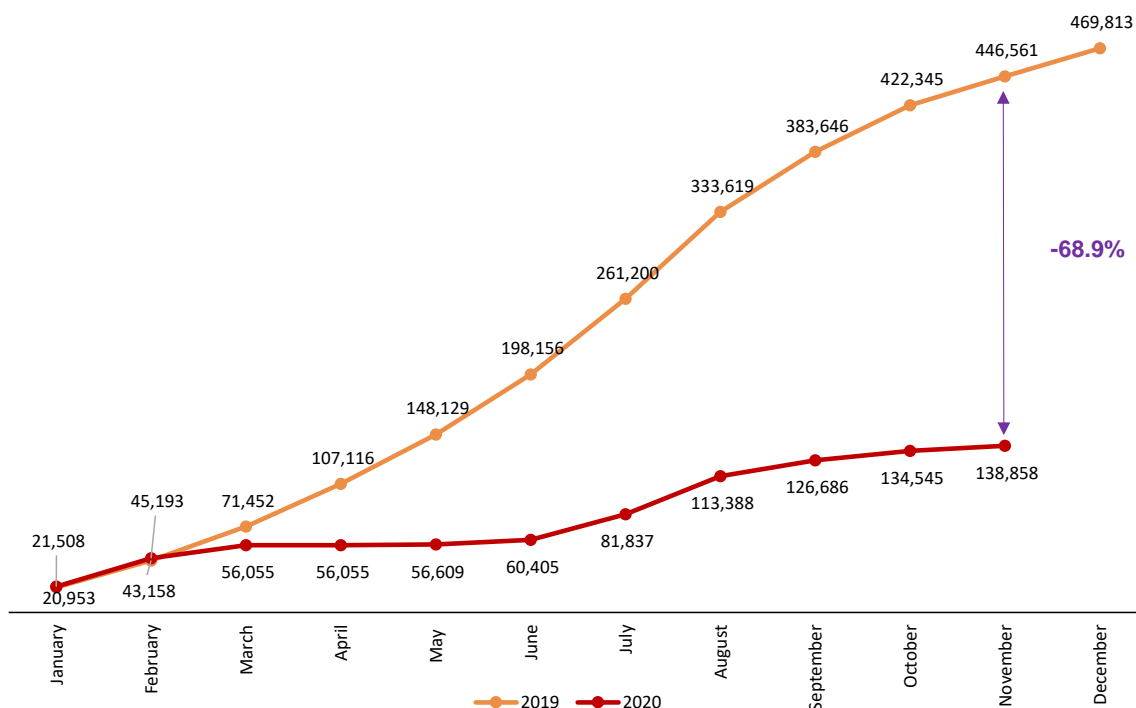
Evolution of travellers and overnight stays in all Spanish collective tourist accommodation

In November, overnight stays in Spanish collective tourist accommodations (hotels¹, holiday dwellings, tourist campsites, rural tourism accommodation and youth hostels) decreased by 82.2% in the annual rate.

In the first 11 months of the year, overnight stays in all tourist accommodations decreased by 68.9%.

Accumulated overnight stays. Comparative 2019-2020

Thousands



¹ The press release corresponding to Hotel Tourism Short-Term Trends was published on 22 December.

Revision and updating of data

Coinciding with today's publication, the INE has updated the data for November 2019 of the Holiday Dwelling Price Index (HDPI), the Tourist Campsite Price Index (TCPI) and the Rural Tourism Accommodation Price Index (RTAPI).

Methodological note

The main objective of the Holiday Dwelling Occupancy Survey (HDOS) is to ascertain the behaviour of a series of variables that make it possible to describe the segment that occupies this type of accommodation within the tourist sector, both from the point of view of supply and demand.

The Holiday Dwelling Price Index (HDPI) is a statistical measure of the monthly evolution of the prices offered by holiday dwelling establishments to their clients.

Type of operation: monthly continuous survey.

Population scope: holiday apartment establishments and/or companies operating holiday apartments.

Geographical scope: the entire national territory, with the exception of Ceuta and Melilla, where there are no establishments of this type.

Reference period of the results: the month.

Reference period for the information: The consultation of basic data refers to a fortnight of the month, chosen randomly, in such way that the complete month is covered among all establishments.

Type of sampling: stratified sampling by province and establishment size, and stratified at island-size level for Canarias and Illes Balears.

Collection method: questionnaire filled in directly by the establishment.

For more information on these statistical operations, you can consult the [methodology and the standardised methodological report](#) for each operation in INEbase.

The main objective of the Campsite Occupancy Survey (COS) is to ascertain the behaviour of a series of variables that make it possible to describe the segment that this type of accommodation occupies within the tourist sector, from the viewpoint of both supply and demand.

The Tourist Campsite Price Index (TCPI) is a statistical measure of the monthly evolution of the prices offered by campsites to their clients.

Type of operation: monthly continuous survey.

Population scope: camping establishments.

Geographical scope: the entire national territory, with the exception of Ceuta and Melilla, where there are no establishments of this type.

Reference period of the results: the month.

Reference period of the information: seven consecutive days of each month, chosen randomly in such way that, between all the establishments, the entire month is covered.

Sample size: approximately 1200 establishments.

Type of sampling: comprehensive survey in all provinces.

Collection method: questionnaire filled in directly by the establishment.

For more information on these statistical operations, you can consult the [methodology and the standardised methodological report](#) for each operation in INEbase.

The main objective of the Rural Tourism Accommodation Occupancy Survey (RTAOS) is to ascertain the behaviour of a series of variables that make it possible to describe the fundamental characteristics of this type of accommodation within the tourist sector, both from the point of view of supply and demand.

The Rural Tourism Accommodation Price Index (RTAPI) is a statistical measure of the monthly evolution of the prices that entrepreneurs of this type of accommodation apply to their clients.

Type of operation: monthly continuous survey.

Population scope: rural tourism establishments registered as such in the corresponding register of each Autonomous Community.

Geographical scope: the entire national territory, with the exception of Ceuta and Melilla where there are no establishments of this type.

Reference period of the results: the month.

Reference period for the information: The consultation of basic data refers to all the days of the month.

Type of sampling: comprehensive survey in all provinces except those where the population size is large enough to take a sample.

Collection method: questionnaire filled in directly by the establishment.

For more information on these statistical operations, you can consult the [methodology and the standardised methodological report](#) for each operation in INEbase.

The main objective of the Hostels Occupancy Survey (HOS) is to ascertain the behaviour of a series of variables that make it possible to describe the fundamental characteristics of this type of accommodation within the tourist sector, both from the point of view of supply and demand.

For more information on this statistical operation, you can consult the [methodology and the standardised methodological report](#) in INEbase.

INE statistics are produced in accordance with the Code of Good Practice for European Statistics, which is the basis for the institution's quality policy and strategy. For more information see the section on Quality at INE and the Code of Best Practices on the INE website.

For further information see **INEbase:** www.ine.es/en/ Twitter: [@es_ine](https://twitter.com/es_ine)

All press releases at: www.ine.es/prensa/prensa_en.htm

Press office: Telephone numbers: (+34) 91 583 93 63 /94 08 – gprensa@ine.es

Information Area: Telephone number: (+34) 91 583 91 00 – www.ine.es/infoine/?L=1

Tourist Accommodation Occupancy Survey (Holiday Dwellings)

November 2020

Provisional data

4th January 2021

1. Travellers, overnight stays and average stay by Autonomous Cities and Communities

Autonomous Cities and Communities	Travellers			Overnight stays			Average stay
	Total	Residents in Spain	Residents abroad	Total	Residents in Spain	Residents abroad	
TOTAL	113,596	65,467	48,129	786,406	360,875	425,532	6.92
Andalucía	12,371	9,375	2,996	61,272	35,514	25,757	4.95
Aragón	898	853	45	6,433	5,529	904	7.16
Asturias, Principado de	175	175	0	2,058	2,058	0	11.78
Balears, Illes	1,108	601	507	7,691	2,489	5,202	6.94
Canarias	59,741	21,584	38,156	355,824	75,892	279,932	5.96
Cantabria	839	817	22	4,140	4,006	134	4.93
Castilla y León	2,198	1,994	204	10,062	6,879	3,182	4.58
Castilla - La Mancha	1,584	1,536	48	12,299	11,522	777	7.77
Cataluña	4,889	3,732	1,157	102,256	72,860	29,396	20.91
Comunitat Valenciana	11,957	9,010	2,947	111,688	57,901	53,788	9.34
Extremadura	2,823	2,753	70	6,867	6,588	279	2.43
Galicia	2,752	2,472	280	10,354	9,112	1,242	3.76
Madrid, Comunidad de	7,867	6,462	1,406	61,169	41,390	19,779	7.78
Murcia, Región de	1,627	1,501	126	13,323	11,643	1,680	8.19
Navarra, Comunidad Foral de	1,112	1,095	17	7,718	7,016	702	6.94
País Vasco	1,537	1,389	147	12,366	9,588	2,777	8.05
Rioja, La	118	118	0	888	888	0	7.50
Ceuta	-	-	-	-	-	-	-
Melilla	-	-	-	-	-	-	-
Annual rate	-83.22	-72.27	-89.08	-79.77	-50.76	-86.51	20.56
Cumulative annual rate	-65.89	-45.28	-78.58	-66.55	-41.76	-75.83	-1.93

2. Capacity, occupancy and number of staff by Autonomous Cities and Communities

Autonomous Cities and Communities	Capacity		Level of occupancy				Employed personnel
	Estimated bedplaces	Estimated Holiday dwelling	Per bedplaces	Per bedplaces at weekend	Per Holiday dwelling	Per Holiday dwelling at weekend	
TOTAL	281,311	72,215	9.35	10.06	18.62	19.63	12,984
Andalucía	46,434	11,553	4.40	4.65	9.81	10.07	2,276
Aragón	5,201	1,226	4.12	3.81	9.40	8.64	409
Asturias, Principado de	1,682	372	4.38	5.19	8.62	11.01	110
Balears, Illes	2,614	642	9.85	10.55	25.79	26.56	216
Canarias	81,199	25,143	14.59	15.95	23.46	25.19	4,983
Cantabria	3,260	765	4.23	3.91	8.60	7.52	277
Castilla y León	4,959	1,161	6.76	7.72	16.56	17.42	428
Castilla - La Mancha	4,831	1,148	8.49	10.57	18.49	21.55	352
Cataluña	17,533	4,197	20.40	20.71	37.60	37.83	621
Comunitat Valenciana	86,187	17,781	4.32	4.81	9.80	10.81	1,491
Extremadura	3,216	785	7.11	10.44	15.18	19.92	511
Galicia	3,514	936	10.13	10.28	25.75	25.64	255
Madrid, Comunidad de	8,925	3,484	22.84	23.33	35.02	35.58	288
Murcia, Región de	5,349	1,408	8.30	8.10	19.78	18.32	142
Navarra, Comunidad Foral de	1,763	465	14.58	13.59	39.20	37.50	334
País Vasco	3,653	932	11.28	11.97	30.94	31.24	218
Rioja, La	991	216	2.99	2.39	11.59	10.00	74
Ceuta	-	-	-	-	-	-	-
Melilla	-	-	-	-	-	-	-
Annual rate	-33.03	-34.61	-69.61	-70.55	-65.08	-65.52	-45.68
Cumulative annual rate	-41.31	-43.12	-42.87	-42.02	-39.12	-38.49	-49.52

3. Travellers, overnight stays, capacity, occupancy, total number of staff with greater number of overnight stays¹

Provinces	Travellers		Overnight stays			Capacity		Level of occupancy			Employed personnel
	Residents in Spain	Residents abroad	Residents in Spain	Residents abroad	Average stay	Estimated bed-places	Estimated holiday dwelling	Per bed-places	Per Holiday dwelling	Per Holiday dwelling at weekend	
Palmas, Las	10,224	17,071	38,244	148,229	6.83	48,208	14,560	12.88	21.57	22.93	2,732
St Cruz de Tenerife	11,361	21,085	37,648	131,703	5.22	32,991	10,583	17.10	26.06	28.31	2,251
Barcelona	2,518	1,122	66,878	28,200	26.12	6,972	2,040	47.15	70.64	70.70	322
Alicante\Alacant	4,597	1,885	26,781	33,675	9.33	59,357	12,352	3.40	7.69	8.84	1,048
Málaga	2,821	1,799	15,054	18,098	7.18	27,388	6,370	4.03	8.41	8.18	1,278
Valencia\València	2,745	880	14,470	15,462	8.26	14,095	2,964	7.08	17.63	18.24	281
Castellón\Castelló	1,667	182	16,649	4,651	11.52	12,734	2,465	5.58	10.92	11.75	161
Sevilla	3,469	342	12,121	3,346	4.06	4,555	1,460	11.31	25.07	25.72	308
Toledo	264	28	7,450	360	26.74	680	185	38.27	73.70	71.47	24
Girona	922	19	4,218	999	5.55	7,928	1,645	2.19	5.82	6.27	155
Araba\Álava	582	31	4,295	842	8.38	842	229	20.34	51.44	52.79	42
Cáceres	2,230	34	4,965	134	2.25	2,314	589	7.34	14.86	20.31	409
Coruña, A	1,553	191	3,796	822	2.65	1,264	398	12.17	27.72	29.86	120
Almería	1,005	709	2,287	2,306	2.68	3,864	957	3.96	8.86	10.42	134
Lugo	806	89	4,140	420	5.09	1,153	279	13.02	36.81	33.86	72

¹ Provinces belonging to uniprovincial Autonomous Communities have not been included because they are reflected in previous tables.

4. Travellers, overnight stays, capacity, occupancy, total number of staff from tourist areas with greater number of overnight stays

Tourist Areas	Travellers		Overnight stays			Capacity		Level of occupancy			Employed personnel
	Residents in Spain	Residents abroad	Residents in Spain	Residents abroad	Average stay	Estimated bed-places	Estimated holiday dwelling	Per bed-places	Per Holiday dwelling	Per Holiday dwelling at weekend	
Isla de Tenerife	8,291	19,509	25,345	118,728	5.18	28,400	9,004	16.89	25.35	27.47	1,859
Isla de Gran Canaria	5,341	7,921	18,134	74,873	7.01	22,829	7,126	13.57	22.64	24.74	1,288
Costa Barcelona 2016	1,274	350	60,376	21,708	30.00	5,074	1,541	53.92	74.43	74.10	175
Isla de Lanzarote	3,042	6,677	12,807	53,858	6.86	19,215	5,421	11.55	19.59	20.09	1,118
Costa Blanca	4,433	1,862	25,321	33,098	9.28	56,809	11,838	3.43	7.67	8.83	982
Costa del Sol (Málaga)	2,226	1,702	13,109	16,970	7.66	25,607	5,910	3.92	7.68	7.81	1,168
Isla de Fuerteventura	1,840	2,474	7,303	19,498	6.21	6,164	2,013	14.49	23.09	24.19	326
Costa de Castellón	1,198	178	15,235	4,643	14.45	11,986	2,284	5.53	10.78	10.99	130
Costa Valencia (Valencia)	336	132	3,641	10,051	29.24	8,944	1,851	5.10	9.99	10.13	64
Barcelona	1,244	772	6,502	6,492	6.45	1,622	403	26.61	56.85	58.41	145

5. Travellers, overnight stays, capacity, occupancy, total number of staff from tourist sites with greater number at overnights stays

Tourist sites	Travellers		Overnight stays			Capacity		Level of occupancy			Employed personnel
	Residents in Spain	Residents abroad	Residents in Spain	Residents abroad	Average stay	Estimated bed-places	Estimated holiday dwelling	Per bed-places	Per Holiday dwelling	Per Holiday dwelling at weekend	
San Bartolomé de Tirajana	3,425	6,105	13,290	59,482	7.64	15,982	5,116	15.16	24.58	26.85	969
Adeje	2,270	8,254	6,079	49,682	5.30	8,883	2,921	20.90	30.42	32.54	491
Arona	1,797	6,527	6,354	48,008	6.53	13,357	4,135	13.56	20.34	21.35	921
Madrid	4,852	1,363	34,066	18,916	8.52	8,060	3,196	21.90	32.87	33.23	225
Tías	1,837	3,703	6,318	27,494	6.10	9,168	2,743	12.28	19.11	19.73	616
Puerto de la Cruz	2,997	1,529	8,271	9,563	3.94	2,813	1,138	21.07	29.90	37.40	235
Mogán	488	1,410	1,960	13,955	8.38	5,989	1,605	8.86	16.44	17.49	281
Teguise	583	1,502	3,164	12,125	7.33	4,953	1,376	10.29	18.43	18.90	334
Yaiza	520	1,354	2,315	12,690	8.01	4,152	1,099	12.02	20.63	20.82	138
Valencia	2,070	617	7,634	4,394	4.48	4,374	923	9.17	27.52	28.22	187

6. Travellers and overnight stays by countries of residence

Countries	Travellers		Overnight stays	
	Total	%	Total	%
TOTAL	113,596	100.00	786,406	100.00
Residents in Spain	65,467	57.63	360,875	45.89
Residents abroad	48,129	42.37	425,532	54.11
Total residents abroad	48,129	100.00	425,532	100.00
Total residents in E.U (excluding Spain)	23,349	48.51	224,546	52.77
- Germany	8,529	17.72	79,693	18.73
- Austria	399	0.83	4,755	1.12
- Belgium	1,779	3.70	18,493	4.35
-Denmark	121	0.25	2,582	0.61
- Finland	252	0.52	2,136	0.50
- France	2,006	4.17	20,146	4.73
- Greece	34	0.07	1,014	0.24
- Ireland	1,106	2.30	10,387	2.44
- Italy	1,666	3.46	16,451	3.87
- Luxembourg	121	0.25	1,547	0.36
- Netherlands	2,449	5.09	20,651	4.85
- Poland	999	2.08	7,109	1.67
- Portugal	417	0.87	5,383	1.26
- United Kingdom	836	1.74	6,337	1.49
- Czech Republic	1,178	2.45	14,503	3.41
- Sweden	1,456	3.03	13,361	3.14
- Other EU countries	97	0.20	1,598	0.38
Norway	19,084	39.65	141,430	33.24
United Kingdom	247	0.51	2,507	0.59
Switzerland	721	1.50	7,567	1.78
Other european countries	732	1.52	7,849	1.84
United States of America	296	0.61	3,349	0.79
Rest of America	1,273	2.65	20,043	4.71
African countries	570	1.18	5,164	1.21
Other countries	1,759	3.65	11,477	2.70

Tourist Accommodation Occupancy Survey Campsite Occupancy Survey (COS)

November 2020

Provisional data

4th January 2021

1. Travellers, overnight stays and average stay by category of establishment

Category	Travellers			Overnight stays			Average stay
	Total	Residents in Spain	Residents abroad	Total	Residents in Spain	Residents abroad	
TOTAL	52,507	43,046	9,461	525,856	184,702	341,154	10.01
Luxury and first-class	18,966	16,229	2,737	207,875	83,870	124,006	10.96
Second-class	28,726	22,984	5,742	290,603	82,663	207,941	10.12
Third-class	4,815	3,833	982	27,378	18,170	9,208	5.69
Annual rate	-74.53	-68.37	-86.50	-55.72	-53.63	-56.77	73.85
Cumulative annual rate	-45.20	-28.54	-78.12	-46.59	-28.33	-67.15	-2.52

2. Open establishments, capacity, occupancy and number of staff by category of establishments

Category	Estimated open establishments	Capacity		Occupied pitches	Occupancy rate per pitch	Weekend occupancy rate	Employed personnel
		Estimated bedplaces	Estimated pitches				
TOTAL	399	244,092	77,090	721,874	31.21	30.06	2,489
Luxury and first-class	102	98,857	30,200	261,641	28.88	28.24	1,026
Second-class	231	129,351	41,687	406,066	32.47	30.89	1,277
Third-class	66	15,884	5,202	54,167	34.71	33.04	186
Annual rate	-21.52	-20.13	-20.30	-32.43	-15.22	-22.81	-31.83
Cumulative annual rate	-33.25	-33.47	-33.31	-40.36	-10.76	-11.96	-36.24

3. Travellers, overnight stays and average stay by Autonomous Cities and Communities

Autonomous cities and communities	Travellers			Overnight stays			Average stay
	Total	Residents in Spain	Residents abroad	Total	Residents in Spain	Residents abroad	
TOTAL	52,507	43,046	9,461	525,856	184,702	341,154	10.01
Andalucía	4,665	2,291	2,374	83,400	26,156	57,245	17.88
Aragón	399	353	46	3,461	2,870	591	8.67
Asturias, Principado de	-	-	-	-	-	-	-
Balears, Illes ¹	-	-	-	-	-	-	-
Canarias ¹	972	811	161	5,723	1,627	4,096	5.89
Cantabria	70	70	0	260	260	0	3.71
Castilla y León	315	184	131	545	368	177	1.73
Castilla - La Mancha	444	444	0	1,329	1,329	0	2.99
Cataluña	11,347	10,504	843	32,256	27,938	4,318	2.84
Comunitat Valenciana	18,237	13,527	4,711	307,798	67,118	240,680	16.88
Extremadura	614	511	103	1,474	1,100	374	2.40
Galicia	231	223	7	436	410	26	1.89
Madrid, Comunidad de	11,761	11,537	224	38,818	38,303	515	3.30
Murcia, Región de	774	200	574	35,018	3,087	31,932	30.00
Navarra, Comunidad Foral de	1,661	1,574	87	4,202	4,015	187	2.53
País Vasco	809	617	192	7,785	6,790	995	9.63
Rioja, La	-	-	-	-	-	-	-
Ceuta	-	-	-	-	-	-	-
Melilla	-	-	-	-	-	-	-

¹ The size of the sample in these communities does not facilitate the INE the broken down results, with the objective of maintaining statistical secrecy. Nevertheless, the data corresponding to these communities are included in the national total.

4. Open establishments, capacity, occupancy and number of staff by autonomous cities and communities

Autonomous cities and communities	Estimated open establishments	Capacity		Occupied pitches	Occupancy rate per pitch	Weekend occupancy rate	Employed personnel
		Estimated bedplaces	Estimated pitches				
TOTAL	399	244,092	77,090	721,874	31.21	30.06	2,489
Andalucía	85	48,877	15,393	95,579	20.70	20.08	482
Aragón	22	10,279	3,211	21,186	21.99	19.40	97
Asturias, Principado de	-	-	-	-	-	-	-
Balears, Illes ¹	-	-	-	-	-	-	-
Canarias ¹	5	3,424	1,416	6,113	14.39	15.64	25
Cantabria	4	1,648	505	9,091	59.99	60.16	13
Castilla y León	9	4,011	1,230	9,340	25.30	16.45	25
Castilla - La Mancha	11	3,460	1,085	8,105	24.91	27.03	39
Cataluña	72	42,727	13,753	136,571	33.10	30.84	424
Comunitat Valenciana	109	69,952	21,754	258,236	39.57	39.93	794
Extremadura	5	2,052	611	3,084	16.82	12.88	17
Galicia	16	5,357	1,725	2,761	5.34	5.65	39
Madrid, Comunidad de	19	17,376	5,980	75,503	42.09	40.88	211
Murcia, Región de	14	13,579	4,424	27,357	20.61	17.61	155
Navarra, Comunidad Foral de	12	6,867	1,804	16,739	30.92	34.29	53
País Vasco	8	5,120	1,526	12,035	26.29	25.61	48
Rioja, La	-	-	-	-	-	-	-
Ceuta	-	-	-	-	-	-	-
Melilla	-	-	-	-	-	-	-

¹ The size of the sample in these communities does not facilitate the INE the broken down results, with the objective of maintaining statistical secrecy. Nevertheless, the data corresponding to these communities are included in the national total.

5. Travellers and overnight stays, average stay, capacity, occupancy and number of staff by provinces with the greatest number of overnight stays¹

Provinces	Travellers		Overnight stays		Average stay	Estimated open establishments	Estimated pitches	Occupancy rate per pitch	Employed personnel
	Residents in Spain	Residents abroad	Residents in Spain	Residents abroad					
	Alicante\Alacant	4,397	2,603	33,513					
Málaga	774	824	9,550	32,157	26.10	26	4,253	26.09	145
Valencia\València	6,694	1,061	23,215	12,804	4.64	29	5,152	36.14	177
Castellón\Castelló	2,437	1,046	10,390	24,961	10.15	32	6,048	21.89	209
Almería	351	699	10,604	14,209	23.62	23	2,908	20.43	102
Barcelona	3,164	173	11,969	1,807	4.13	24	5,981	29.97	177
Girona	4,767	611	9,145	2,206	2.11	27	3,620	31.85	124
Cádiz	363	335	2,958	4,954	11.33	13	2,963	16.40	109
Granada	188	249	1,191	4,246	12.44	9	1,702	21.45	45
Lleida	838	3	3,850	187	4.80	13	2,151	52.77	61
Tarragona	1,735	56	2,975	118	1.73	9	2,001	23.56	62
Huelva	310	260	1,506	1,385	5.07	5	1,956	23.82	49
Gipúzkoa	173	170	1,114	851	5.73	5	1,114	23.03	34
Huesca	163	12	519	92	3.49	16	2,378	25.93	59
Coruña, A	223	7	410	26	1.89	11	1,256	4.06	30

¹ Provinces belonging to uniprovincial Autonomous Communities have not been included because they are reflected in previous tables.

6. Travellers, overnight stays, average stay, open establishments, capacity, occupancy and number of staff from tourist areas with the greatest number of overnight stays

Tourist areas	Travellers		Overnight stays		Average stay	Estimated open establishments	Estimated pitches	Occupancy rate per pitch	Employed personnel
	Residents in	Residents abroad	Residents in	Residents abroad					
	Spain		Spain						
Costa Blanca (Alicante)	3,215	2,315	20,291	174,840	30.00	40	8,124	57.32	344
Costa del Sol (Málaga)	436	810	8,584	31,080	30.00	16	3,490	29.44	116
Costa Cálida (Murcia)	126	479	2,213	29,691	30.00	9	3,876	21.69	132
Costa de Castellón	1,645	964	5,419	24,270	11.38	27	5,613	21.21	187
Costa Valencia (Valencia)	1,890	823	13,001	11,486	9.02	13	3,221	35.76	105
Costa de Almería	288	683	10,413	12,470	23.56	19	2,557	20.57	78
Costa Barcelona 2016	2,143	171	9,245	1,786	4.77	10	4,442	23.12	109
Pirineus	3,055	2	8,396	235	2.82	33	4,315	47.57	141
Costa Brava	3,209	611	6,258	2,171	2.21	13	2,168	29.92	78
Costa de la Luz de Cádiz	272	335	2,612	4,954	12.45	10	2,465	12.56	94
Costa Tropical (Granada)	171	249	1,105	4,246	12.74	6	1,199	16.44	34
Parque Natural Los Alcornocales	63	325	307	3,115	8.82	6	1,072	21.36	33
Costa de la Luz de Huelva	310	260	1,506	1,385	5.07	5	1,956	23.82	49
Costa Daurada	1,630	56	2,760	118	1.71	5	1,619	24.07	49
Pirineo Navarro	1,021	0	2,520	0	2.47	7	671	22.85	24

7. Travellers, overnight stays, average stay, open establishments, capacity, occupancy and number of staff from tourist sites with the greatest number at overnights stays

Tourist sites	Travellers		Overnight stays		Average stay	Estimated open establishments	Estimated pitches	Occupancy rate per pitch	Employed personnel
	Residents in	Residents abroad	Residents in	Residents abroad					
	Spain		Spain						
Benidorm	86	493	4,616	108,789	30.00	9	3,869	72.98	130
Marbella	172	301	4,146	14,867	30.00	3	1,313	30.85	31
Cartagena	87	193	1,012	15,373	30.00	3	2,555	17.16	62
Calp	98	983	720	11,527	11.33	5	485	47.28	23
Mazarrón	0	230	711	10,716	30.00	3	882	28.63	41
Oliva	290	189	4,884	5,515	21.71	5	1,267	14.93	60
Vélez-Málaga	0	139	110	8,678	30.00	4	879	20.26	37
Campello, El	230	165	2,612	5,189	19.75	5	375	50.59	24
Cabanes	15	226	313	6,889	29.89	4	1,211	10.43	33
Peñíscola	37	223	769	5,179	22.83	6	1,023	11.49	23
Altea	153	129	695	4,130	17.11	3	401	34.98	15
Benicasim	185	75	762	3,845	17.72	4	881	19.32	45

8. Travellers and overnight stays by countries of residence

Countries	Travellers		Overnight stays	
	Total	%	Total	%
TOTAL	52,507	100.00	525,856	100.00
Residents in Spain	43,046	81.98	184,702	35.12
Residents abroad	9,461	18.02	341,154	64.88
TOTAL residents abroad	9,461	100.00	341,154	100.00
TOTAL residents in EU (excluding Spain)	6,375	67.38	162,977	47.77
- Germany	2,775	29.33	59,350	17.40
- Austria	162	1.71	1,881	0.55
- Belgium	663	7.00	17,819	5.22
- Denmark	44	0.46	2,057	0.60
- Finland	13	0.13	1,927	0.56
- France	972	10.27	25,164	7.38
- Greece	14	0.15	253	0.07
- Ireland	107	1.13	3,611	1.06
- Italy	201	2.13	1,985	0.58
- Luxembourg	63	0.66	930	0.27
- Netherlands	908	9.59	36,747	10.77
- Poland	72	0.76	238	0.07
- Portugal	30	0.32	432	0.13
- Czech Republic	31	0.33	455	0.13
- Sweden	180	1.90	8,877	2.60
- Other EU countries	141	1.49	1,251	0.37
Norway	53	0.56	3,539	1.04
United Kingdom	2,289	24.20	165,248	48.44
Russia	10	0.11	130	0.04
Switzerland	423	4.47	6,745	1.98
Other European countries	108	1.14	303	0.09
United States of America	8	0.08	88	0.03
Rest of America	50	0.53	506	0.15
African countries	41	0.43	209	0.06
Other countries	104	1.10	1,410	0.41

¹ Non-significant data

**Tourist accommodation occupancy survey
(Rural tourist accommodation)**

November 2020

Provisional data

4th January 2021

1. Number of travellers, overnight stays and average stay by Autonomous City and Community

Autonomous Communities	Number of travellers			Number of overnight stays			Average stay
	Total	Residents In Spain	Residents abroad	Total	Residents In Spain	Residents abroad	
TOTAL	39,817	36,638	3,179	127,705	109,861	17,844	3.21
Andalucía	1,445	1,174	271	7,114	4,247	2,867	4.92
Aragón	912	865	47	6,174	5,951	223	6.77
Asturias, Principado de	292	278	14	1,261	1,218	43	4.32
Balears, Illes	2,645	2,006	639	6,979	3,639	3,340	2.64
Canarias	2,633	1,728	905	11,229	5,160	6,068	4.27
Cantabria	449	308	141	1,085	806	279	2.42
Castilla y León	3,269	3,176	93	13,391	13,152	240	4.10
Castilla-La Mancha	2,293	2,088	204	15,178	13,245	1,933	6.62
Cataluña	3,114	3,066	48	9,873	9,778	95	3.17
Comunitat Valenciana	6,939	6,725	214	16,829	15,690	1,139	2.43
Extremadura	4,211	4,054	157	9,753	9,167	586	2.32
Galicia	1,280	1,235	44	2,293	2,203	90	1.79
Madrid, Comunidad de	8,092	7,816	276	15,831	15,451	379	1.96
Murcia, Región de	130	130	0	260	260	0	2.00
Navarra, Comunidad Foral de	885	885	0	5,051	5,051	0	5.71
País Vasco	898	782	116	4,370	3,818	552	4.86
Rioja, La	331	321	10	1,034	1,024	10	3.13
Ceuta	-	-	-	-	-	-	-
Melilla	-	-	-	-	-	-	-
Annual rate	-86.75	-86.49	-89.15	-80.18	-79.80	-82.27	49.53
Cumulative annual rate	-51.33	-43.81	-79.49	-44.18	-30.83	-77.47	14.70

2. Open rural establishments, bed-places, occupancy rates and employed personnel by Autonomous City and Community

Autonomous Communities	Estimated open rural establishments	Estimated bed-places	Occupancy rate			Employed personnel
			Of bed-places	Of bed-places at weekend	Of bedrooms	
TOTAL	12,879	117,766	3.61	5.60	6.36	17,006
Andalucía	2,001	16,198	1.46	1.64	3.39	2,585
Aragón	838	6,613	3.11	2.91	5.68	957
Asturias, Principado de	362	3,150	1.33	0.91	2.42	559
Balears, Illes	147	2,490	9.34	17.40	13.36	436
Canarias	506	3,094	12.09	16.10	20.40	615
Cantabria	295	4,358	0.83	1.10	1.18	528
Castilla y León	2,675	22,604	1.97	2.41	4.36	3,289
Castilla-La Mancha	1,519	12,815	3.95	5.47	6.35	1,775
Cataluña	1,552	13,559	2.43	2.45	5.08	1,906
Comunitat Valenciana	708	8,032	6.98	14.97	13.13	1,085
Extremadura	574	6,546	4.97	9.87	8.15	757
Galicia	284	3,574	2.14	4.12	4.15	467
Madrid, Comunidad de	200	3,149	16.74	38.30	22.27	564
Murcia, Región de	138	1,936	0.45	0.59	1.01	208
Navarra, Comunidad Foral de	682	5,248	3.21	4.20	7.23	813
País Vasco	307	3,470	4.20	2.59	7.85	364
Rioja, La	92	931	3.70	2.38	7.50	97
Ceuta	-	-	-	-	-	-
Melilla	-	-	-	-	-	-
Annual rate	-24.93	-27.37	-72.66	-80.75	-62.16	-29.24
Cumulative annual rate	-32.97	-34.29	-15.27	-23.26	-9.38	-31.22

3. Number of travellers, overnight stays and average stay in Provinces with the greatest number of overnight stays¹

Provinces	Number of travellers			Number of overnight stays			Average stay
	Total	Residents In Spain	Residents abroad	Total	Residents In Spain	Residents abroad	
St Cruz de Tenerife	1,718	1,140	577	8,489	3,835	4,654	4.94
Cáceres	3,133	3,028	104	7,338	7,050	288	2.34
Castellón\Castelló	2,620	2,606	15	6,689	6,674	16	2.55
Girona	2,033	2,020	13	5,775	5,756	19	2.84
Valencia\València	2,038	1,997	41	5,117	4,499	618	2.51
Alicante\Alacant	2,281	2,123	158	5,022	4,517	505	2.20
Albacete	579	579	0	4,256	4,256	0	7.35
Málaga	668	477	191	4,080	1,413	2,668	6.11
Toledo	185	185	0	3,970	3,970	0	21.50
Cuenca	261	261	0	3,397	1,750	1,647	13.03
Ávila	447	435	12	3,386	3,320	65	7.57
Zaragoza	404	361	43	3,373	3,158	216	8.35
Palencia	476	446	30	2,984	2,868	116	6.26
Palmas, Las	915	587	328	2,740	1,326	1,414	3.00
Badajoz	1,078	1,025	53	2,416	2,117	298	2.24

¹ Provinces belonging to uniprovincial Autonomous Communities have not been included because they are reflected in previous tables.

4. Open rural establishments, bed-places, occupancy rates and employed personnel in Provinces with the highest number of overnight stays¹

Provinces	Estimated open rural establishments	Estimated bed-places	Occupancy rate			Employed personnel
			Of bed-places	Of bed-places at weekend	Of bedrooms	
St Cruz de Tenerife	434	2,463	11.48	14.09	20.10	479
Cáceres	439	4,945	4.95	10.42	7.77	569
Castellón\Castelló	316	3,153	7.07	14.39	12.02	450
Girona	527	5,192	3.71	4.42	8.68	603
Valencia\València	213	2,875	5.93	13.53	13.11	351
Alicante\Alacant	178	2,004	8.35	17.94	15.05	284
Albacete	714	4,581	3.10	5.00	6.32	811
Málaga	1,211	8,215	1.66	2.06	4.19	1,593
Toledo	165	1,836	7.21	7.58	8.94	190
Cuenca	254	2,549	4.44	6.19	7.63	279
Ávila	684	5,456	2.07	2.91	5.53	725
Zaragoza	185	1,536	7.32	8.14	13.10	198
Palencia	174	1,413	7.04	8.63	12.38	227
Palmas, Las	72	631	14.46	23.96	21.61	137
Badajoz	135	1,601	5.03	8.18	9.27	187

¹ Provinces belonging to uniprovincial Autonomous Communities have not been included because they are reflected in previous tables.

5. Number of travellers, overnight stays, average stay, capacity and occupancy rates in areas with the highest number of overnight stays

Areas	Number of travellers		Number of overnight stays			Capacity		Occupancy rate		
	Residents In Spain	Residents abroad	Residents In Spain	Residents abroad	Average stay	Estimated open rural establish.	Estimated bed-places	Of bed-places	Of bed-places at weekend	Of bedrooms
Parque Nacional Sierra de Guadarrama	3,684	199	7,354	266	1.96	98	1,330	19.08	47.83	19.62
Isla de Mallorca	1,287	517	2,614	3,090	3.16	129	2,204	8.63	16.92	12.85
Extremadura Norte	2,325	41	5,222	185	2.29	274	3,136	5.75	12.61	8.85
Pirineus	1,317	19	4,660	19	3.50	597	4,906	3.18	3.91	5.53
Pirineo Navarro	704	0	3,427	0	4.87	560	4,200	2.72	4.53	6.55
P.Natural de Los Calares del Mundo y de la Sima	143	0	3,315	0	23.19	235	1,331	8.30	9.26	17.24
Costa Brava	900	13	3,084	19	3.40	344	3,288	3.15	3.11	9.15
Isla de La Palma	235	153	1,155	1,884	7.84	235	1,011	10.02	11.04	20.16
Isla de Tenerife	588	295	1,455	1,550	3.40	95	912	10.96	14.60	14.81
P.Natural Sierras de Tejeda, Almijá	74	74	407	2,222	17.75	337	2,222	3.94	3.75	11.56
P.Natural de Corona Forestal	461	225	931	1,222	3.14	68	675	10.61	14.42	12.84
P.Nacional Teide	451	209	894	1,053	2.95	60	613	10.56	14.56	12.49
Isla Gran Canaria	441	192	957	854	2.86	55	398	15.13	25.90	22.75
P.Nacional Garajonay	203	120	628	1,024	5.12	65	382	14.42	19.20	29.96
Isla de La Gomera	203	120	628	1,024	5.12	65	382	14.42	19.20	29.96

6. Number of travellers, overnight stays, average stay, capacity, occupancy rates and employed personnel per rural house by Autonomous City and Community²

Autonomous Communities	Number of travellers		Number of overnight stays			Average stay	Capacity		Occupancy rate		Employed personnel
	Residents In Spain	Residents abroad	Residents In Spain	Residents abroad	Estimated open rural establish.		Estimated bed-places	Of bed-places	Of bed-places at weekend		
TOTAL	22,516	1,945	79,349	14,047	3.82	11,474	94,748	3.29	4.78	14,252	
Andalucía	1,167	271	4,226	2,867	4.93	1,997	16,093	1.47	1.64	2,566	
Aragón	728	43	5,497	216	7.41	707	5,381	3.54	3.42	821	
Asturias, Principado de	-	-	-	-	-	-	-	-	-	-	
Balears, Illes	1,314	332	2,450	1,953	2.68	76	1,113	13.19	19.25	167	
Canarias	1,111	595	3,927	5,043	5.26	488	2,581	11.58	14.80	539	
Cantabria	146	134	427	267	2.48	181	2,180	1.06	2.00	321	
Castilla y León	1,757	12	9,931	98	5.67	2,444	18,060	1.85	2.39	2,794	
Castilla-La Mancha	2,070	204	13,227	1,933	6.66	1,496	12,244	4.13	5.71	1,746	
Cataluña	3,066	48	9,778	95	3.17	1,552	13,559	2.43	2.45	1,906	
Comunitat Valenciana	6,002	204	14,456	1,056	2.50	669	6,043	8.56	18.41	986	
Extremadura	1,816	26	3,564	225	2.06	361	3,289	3.84	8.44	425	
Galicia	878	17	1,654	57	1.91	215	2,576	2.21	4.39	334	
Madrid, Comunidad de	1,032	0	3,728	0	3.61	82	964	12.88	31.18	95	
Murcia, Región de	29	0	90	0	3.13	132	1,739	0.17	0.41	191	
Navarra, Comunidad Foral de	581	0	3,278	0	5.64	576	4,534	2.41	2.31	682	
País Vasco	437	49	1,968	227	4.51	171	1,890	3.87	2.13	207	
Rioja, La	321	10	1,024	10	3.13	92	931	3.70	2.38	97	
Ceuta	-	-	-	-	-	-	-	-	-	-	
Melilla	-	-	-	-	-	-	-	-	-	-	

² To facilitate the comparability between data from different Autonomous Communities (and because of the different regulation and different characteristics),

a group called rural house has been created, with those establishments with similar typology (location, capacity, etc...).

The variables included in the previous table have been estimated with that type of establishments.

9. Travellers and overnight stays by country of residence

Results by countries	Travellers		Overnight stays	
	Total	%	Total	%
TOTAL	39,817	100.00	127,705	100.00
Residents in Spain	36,638	92.02	109,861	86.03
Residents abroad	3,179	7.98	17,844	13.97
Total Residents abroad	3,179	100.00	17,844	100.00
TOTAL Residents in EU-27 ¹ (without Spain)	1,886	59.33	10,910	61.14
- Germany	757	23.80	4,480	25.11
- Belgium	174	5.48	812	4.55
- France	273	8.58	1,097	6.15
- Italy	115	3.60	570	3.19
- Netherlands	82	2.57	401	2.25
- Portugal	206	6.47	2,556	14.32
United Kingdom	487	15.30	4,349	24.37
Switzerland	42	1.31	497	2.79
Other European countries	326	10.24	1,081	6.06
United States of America	88	2.77	343	1.92
Other countries	632	19.87	1,658	9.29

¹ Since 31 January 2020, The United Kingdom is no longer part of the E.U., hence the aggregate UE-27 is published.

**Tourist Accommodation Occupancy Survey
Hostels Occupancy Survey (HOS)**

November 2020

Provisional data

4th January 2021

1. Travellers, overnight stays and average stay by Autonomous Cities and Communities

Autonomous cities and communities	Travellers			Overnight stays			Average stay
	Total	Residents in Spain	Residents abroad	Total	Residents in Spain	Residents abroad	
TOTAL	5,766	3,887	1,879	26,680	17,583	9,098	4.63
Andalucía	966	966	0	9,249	9,249	0	9.57
Aragón	43	41	2	293	286	7	6.81
Asturias, Principado de	-	-	-	-	-	-	-
Balears, Illes	-	-	-	-	-	-	-
Canarias	774	140	634	5,313	534	4,779	6.86
Cantabria	-	-	-	-	-	-	-
Castilla y León	-	-	-	-	-	-	-
Castilla - La Mancha	-	-	-	-	-	-	-
Cataluña	1,491	1,063	428	5,890	3,692	2,198	3.95
Comunitat Valenciana	705	433	272	2,316	1,198	1,118	3.29
Extremadura	-	-	-	-	-	-	-
Galicia	-	-	-	-	-	-	-
Madrid, Comunidad de	811	500	311	1,491	872	619	1.84
Murcia, Región de	-	-	-	-	-	-	-
Navarra, Comunidad Foral de	-	-	-	-	-	-	-
País Vasco	287	266	21	541	475	66	1.89
Rioja, La	-	-	-	-	-	-	-
Ceuta	-	-	-	-	-	-	-
Melilla	-	-	-	-	-	-	-
Annual rate	-91.28	-91.08	-91.66	-83.14	-82.20	-84.69	93.31
Cumulative annual rate	-78.05	-75.59	-82.89	-74.59	-73.21	-77.55	15.77

2. Open establishments, capacity, occupancy and number of staff by autonomous cities and communities

Autonomous cities and communities	Capacity		Occupancy rate		Employed personnel
	Estimated open establishments	Estimated bed-places	Of bed-places	Of bed-places at weekend	
TOTAL	108	11,946	7.44	9.70	793
Andalucía	7	1,733	17.79	22.23	145
Aragón	9	908	1.08	1.28	46
Asturias, Principado de	-	-	-	-	-
Balears, Illes	-	-	-	-	-
Canarias	15	394	44.95	48.97	34
Cantabria	-	-	-	-	-
Castilla y León	-	-	-	-	-
Castilla - La Mancha	-	-	-	-	-
Cataluña	13	1,694	11.59	12.42	113
Comunitat Valenciana	6	1,267	6.10	11.56	54
Extremadura	-	-	-	-	-
Galicia	-	-	-	-	-
Madrid, Comunidad de	5	562	8.84	13.13	162
Murcia, Región de	-	-	-	-	-
Navarra, Comunidad Foral de	-	-	-	-	-
País Vasco	11	1,391	1.30	3.68	59
Rioja, La	-	-	-	-	-
Ceuta	-	-	-	-	-
Melilla	-	-	-	-	-
Annual rate	-52.37	-49.82	-66.39	-65.41	-48.73
Cumulative annual rate	-52.35	-51.02	-48.00	-43.94	-47.86

3. Travellers and overnight stays by countries of residence

Countries	Travellers		Overnight stays		Average stay
	Total	%	Total	%	
TOTAL	5,766	100.00	26,680	100.00	4.63
Residents in Spain	3,887	67.41	17,583	65.90	4.52
Residents abroad	1,879	32.59	9,098	34.10	4.84
TOTAL residents abroad	1,879	100.00	9,098	100.00	4.84
TOTAL Residents in EU-27 ¹ (without Spain)	1,041	55.40	3,484	38.30	3.35
- Germany	228	12.13	967	10.63	4.24
- Belgium	114	6.07	346	3.80	3.04
- France	358	19.05	1,089	11.97	3.04
- Italy	109	5.80	506	5.56	4.64
- Netherlands	57	3.03	123	1.35	2.16
- Portugal	32	1.71	74	0.81	2.31
United Kingdom	222	11.81	663	7.29	2.99
Switzerland	36	1.92	169	1.86	4.69
Other European countries	270	14.37	876	9.63	3.24
United States of America	4	0.21	9	0.10	2.25
Other countries	449	23.90	4,275	46.99	9.52

¹ Since 31 January 2020, The United Kingdom is no longer part of the E.U., hence the aggregate UE-27 is published.

HOLIDAY DWELLING PRICE INDEX (HDPI)

November 2020

Provisional data

4th January 2021

National general index and breakdown by rates

	Index	Annual variation rate
TOTAL	119.81	-11.80
Normal	114.39	-8.38
Weekend	101.08	-15.93
Tour-operators and travel agencies	125.86	-13.31

National general index and breakdown by modalities

	Index	Annual variation rate
TOTAL	119.81	-11.80
Studio	107.97	-14.49
Dwellings 2/4 bedplaces	117.85	-14.01
Dwellings 4/6 bedplaces	142.41	-2.14

HDPI (ANNEX OF TABLES) - November 2020. Provisional data

Tourist Campsite Price Index (TCSPI). 2002 Base

November 2020

Provisional data

4th January 2021

National general index and breakdown by rates

	Index	Annual variation rate
TOTAL	144.92	0.25
Normal rate	137.28	0.06
Special rate for stays up to one month	145.18	-2.17
Special rate for stays longer than one month	161.05	-0.31
Bungalow rate ¹	100.05	1.37

¹2014 Base

National general index and breakdown by categories

	Index	Annual variation rate
TOTAL	144.92	0.25
Luxury and first	159.42	0.64
Second	135.73	-0.06
Third	154.33	0.05

TCSPI (ANNEX OF TABLES) - November 2020. Provisional data

Rural Tourism Accommodation Price Index (RTAPI)

November 2020

Provisional data

4th January 2021

General Autonomous Cities and Communities and national indices

	Index	Annual variation rate
TOTAL	136.62	-1.62
Andalucía	135.46	-1.71
Aragón	157.12	4.90
Asturias, Principado de	144.80	7.02
Balears, Illes	108.33	-2.56
Canarias	108.58	2.97
Cantabria	147.65	-2.90
Castilla y León	130.13	-5.94
Castilla - La Mancha	128.38	-5.25
Cataluña	163.20	3.87
Comunitat Valenciana	159.20	11.79
Extremadura	115.87	11.66
Galicia	140.38	0.84
Madrid, Comunidad de	155.55	4.71
Murcia, Región de	126.72	-6.31
Navarra, Comunidad Foral de	143.51	-11.73
País Vasco	124.29	-12.12
Rioja, La	101.18	-36.00
Ceuta	-	-
Melilla	-	-

National general index and breakdown by rates

	Index	Annual variation rate
TOTAL	136.62	-1.62
Normal	132.97	0.46
Weekend	141.50	-2.14

National general index and breakdown by rent modality

	Index	Annual variation rate
TOTAL	136.62	-1.62
Shared use (in case of per room rent modality)	118.71	-0.70
Full use (rent of entire dwelling)	144.22	-1.84