

23 March 2021

**Hotel Tourism Short-Term Trends (HOS/HPI/IPHS)**  
February 2021. Provisional data

**Overnight stays in hotel establishments decrease 86.5% in February as compared with the same month of 2020**

**Hotels invoice an average of 60.0 euros per occupied room, representing an annual decrease of 28.2%**

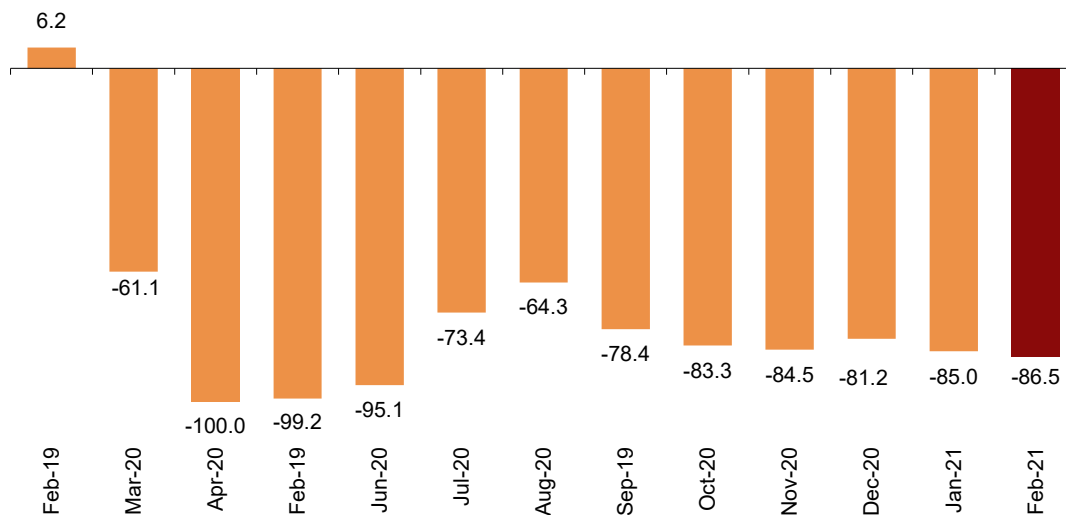
During the month of February, overnight stays in hotel establishments exceeded 2.3 million, 86.5% less than in the same month of 2020.

On the basis of origin, overnight stays by travellers residing in Spain, which represent 72.9% of the total, decreased by 75.2% in the annual rate. In turn, overnight stays by non-residents fell by 93.9%.

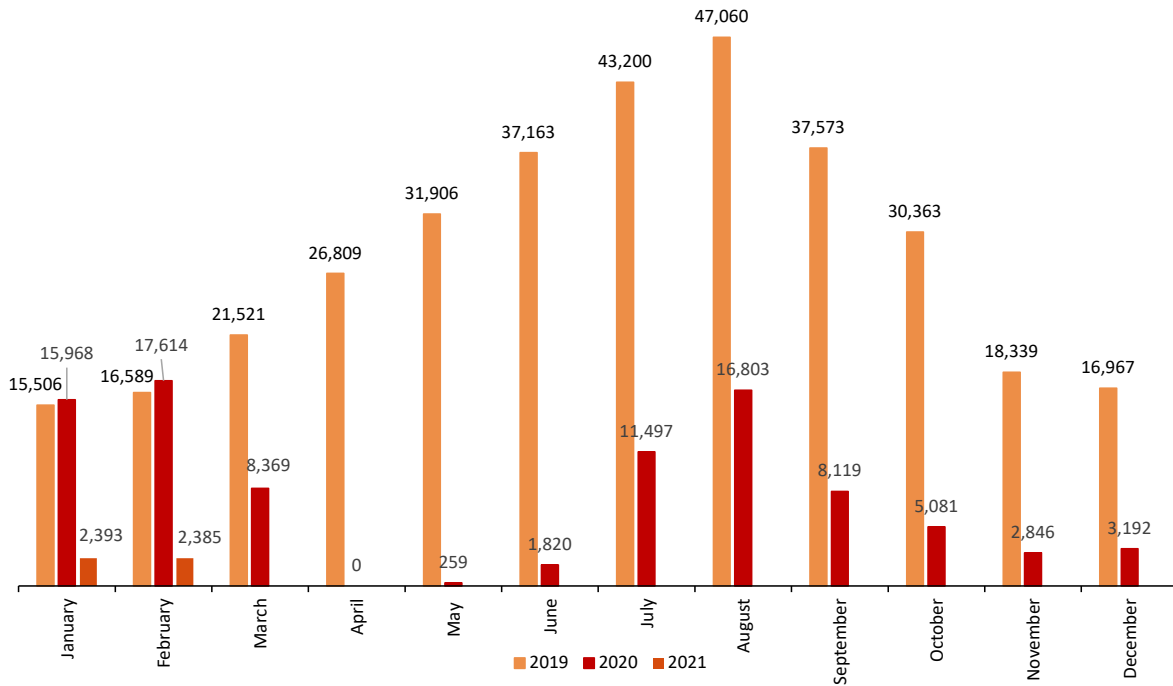
On the other hand, the average stay decreased 24.2% compared to February 2020, standing at 2.1 overnight stays per traveller.

**Annual variation rate for overnight stays**

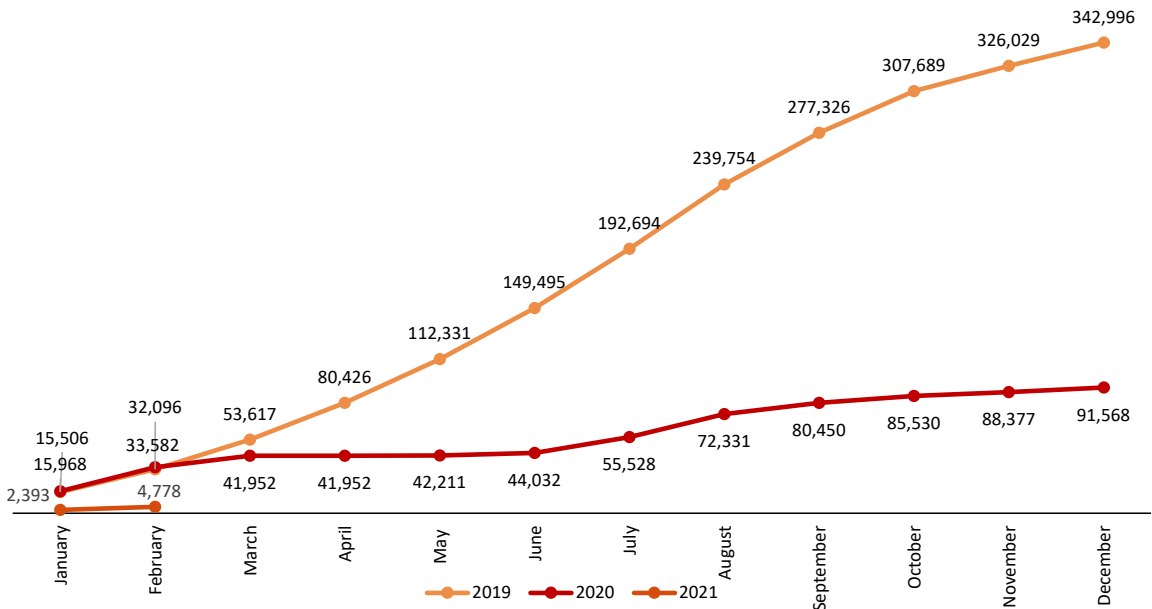
Percentage



**Overnight stays. Comparison 2019-2020-2021**  
Thousands



**Cumulative overnights. Comparison 2019-2020-2021**  
Thousands



## Open establishments

In February, a total of 7,261 hotels were open in Spain, 42.9% less than in the same month of 2020. This represented 45.7% of the total directory of establishments in this month.

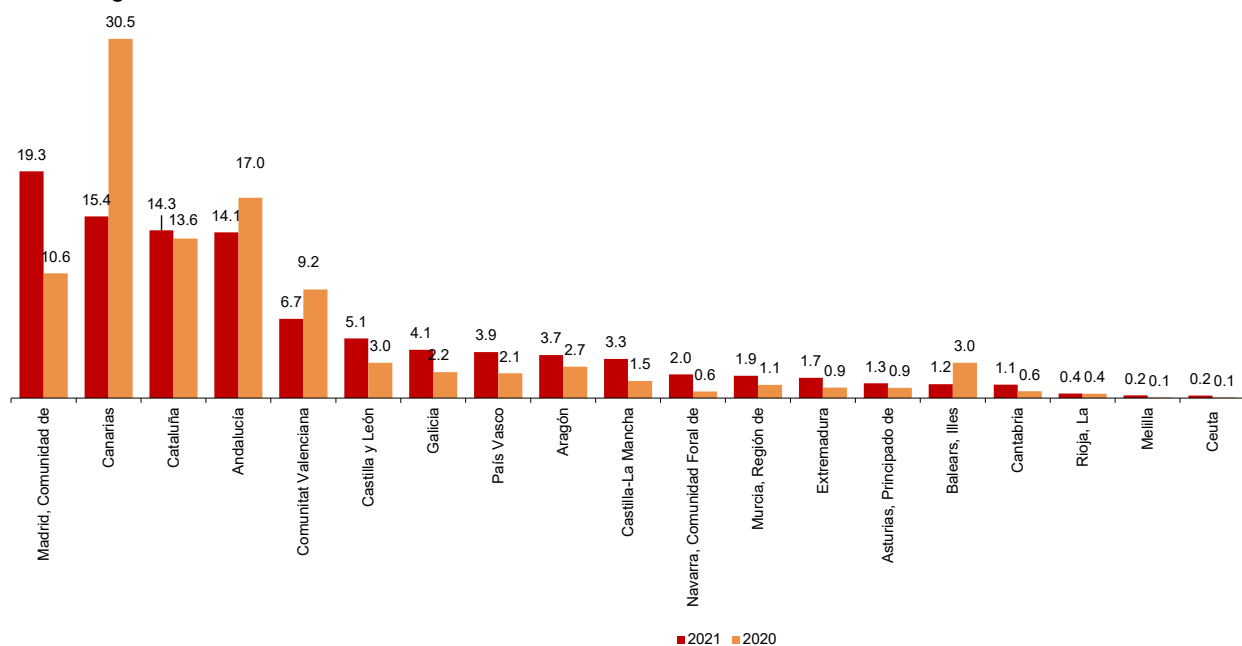
Category	Estimated open establishments total	Percentage of directory	Estimated bedrooms	Percentage of directory total	Estimated bed-places	Percentage of directory total
<b>TOTAL</b>	<b>7,261</b>	<b>45.7</b>	<b>256,957</b>	<b>40.2</b>	<b>517,337</b>	<b>39.2</b>
<b>HOTELS: Golden stars</b>						
Five	105	34.4	18,723	41.0	39,584	41.1
Four	883	39.9	100,009	35.9	208,150	34.9
Three	912	39.9	48,631	35.1	100,042	34.1
Two	899	47.1	24,319	47.0	47,425	46.7
One	575	48.4	13,740	55.2	26,514	54.8
<b>INNS: Silver stars</b>						
Two and three	1,731	52.1	25,666	53.6	47,685	52.6
One	2,157	46.2	25,868	50.0	47,937	50.8
Annual rate	-42.9		-55.1		-56.4	

## Destinations

Madrid, Canarias and Cataluña were the main destinations of residents in Spain in February, with annual variation rates in the number of overnight stays of -75.4%, -93.2% and -85.8%, respectively.

## Distribution of overnight stays Comparison February 2020-2021

Percentage



The main destinations for travellers residing in Spain are Comunidad de Madrid, Andalucía and Cataluña, which present annual rates of variation in overnight stays of -63.9%, -82.4% and -69.5%, respectively.

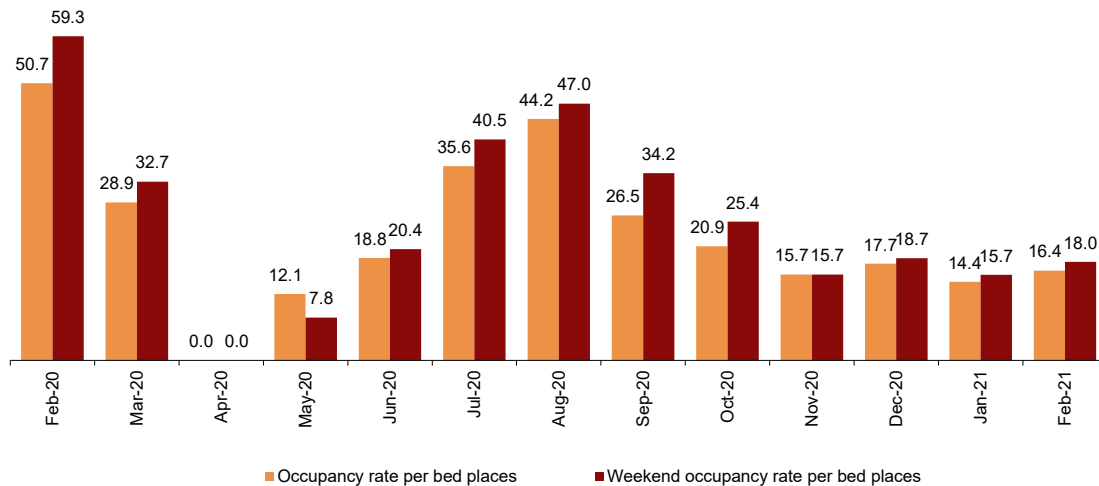
The main destination chosen by non-residents was Canarias, with 36.2% of total overnight stays. In this Autonomous Community, overnight stays by foreign nationals decreased 95.2% as compared to February 2020. The next most popular destinations of non-residents were Comunidad de Madrid (with a decrease of 87.0%) and Cataluña (with a decrease of 94.1%).

## Hotel occupancy

In February, 16.4% of the available bed-places were covered, with an annual decrease of 67.6%. The weekend occupancy rate by bed-places declined by 69.6%, standing at 18.0%.

### Occupancy rate

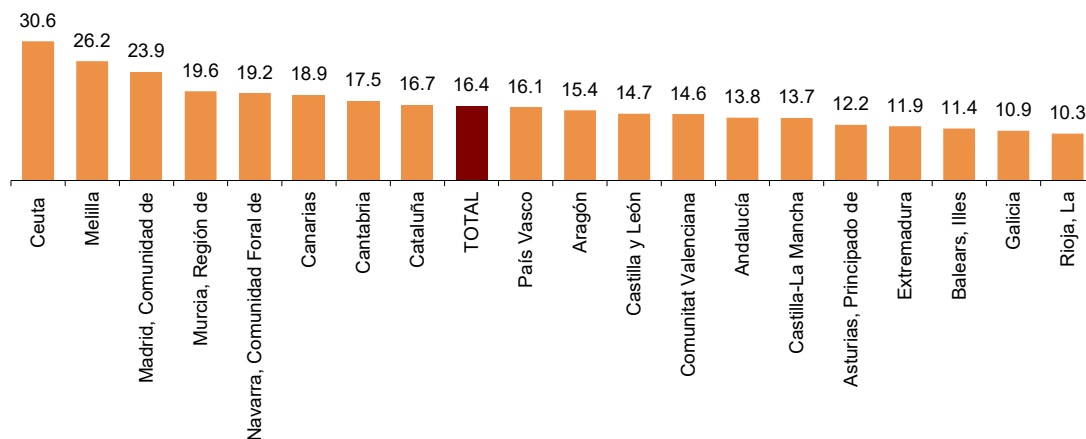
Percentage



The autonomous city of Ceuta showed the highest occupancy rate by bed-places in February (30.6%). It is followed by the autonomous city of Melilla, with 26.2%.

### Occupancy rate per bed places by autonomous community

Percentage



By tourist areas, the South of Tenerife reached the highest occupancy rate by bed-places (22.7%), and the highest weekend occupancy rate (30.6%). Barcelona had the highest number of overnight stays, with 148,916.

The tourist sites with the most overnight stays were Madrid, Barcelona and San Bartolomé de Tirajana. Ceuta had the highest occupancy rate by bed-places (30.6%), while Monachil reached the highest weekend occupancy rate (33.4%).

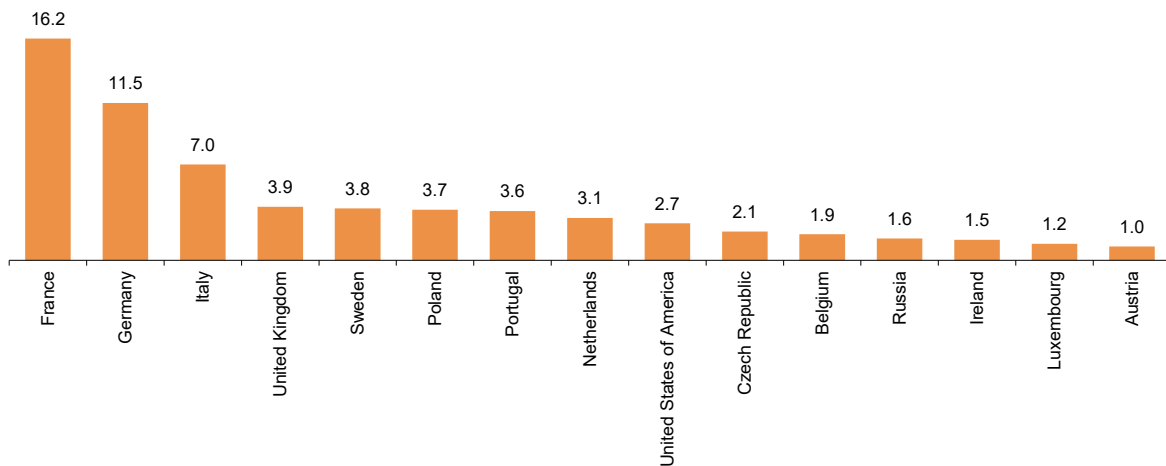
## Overnight stays according to the country of origin of the travellers

In February, travellers from France and Germany concentrated 16.2% and 11.5% of total overnight stays of non-residents in hotel establishments, respectively. The French market had an annual variation rate of -86.6%, and the German market a rate of -95.9%.

Overnight stays of travellers from Italy, the United Kingdom, and Sweden (the following countries of origin) registered annual rates of -90.5%, -98.9% and -93.8% respectively.

## Distribution of non-residents overnight stays. Main country of residence

Percentage



## Hotel Prices

The annual rate of the Hotel Prices Index (HPI) stood at -14.4% in February, which is 15.3 points below that registered in the same month of 2020 and 3.3 of a point more than that registered last month.

### Hotel Prices Index

National by categories

	Index	Annual growth rate
TOTAL	89.0	-14.4
HOTELS: Gold stars		
Five	84.8	-8.6
Fourth	87.9	-16.0
Three	92.6	-13.6
Two	89.4	-13.4
One	89.5	-17.6
HOSTALS: Silver stars		
Three and two	85.4	-17.8
One	88.2	-20.5

By categories, the largest price decrease was recorded in establishments with one silver star (-20.5%). And the lowest, in those with five gold stars (-8.6%).

## Hotel Sector Profitability

In February, the average daily rate per occupied room (ADR) of hotels was 60.0 euros, indicating a decrease of 28.2% as compared to the same month in 2020.

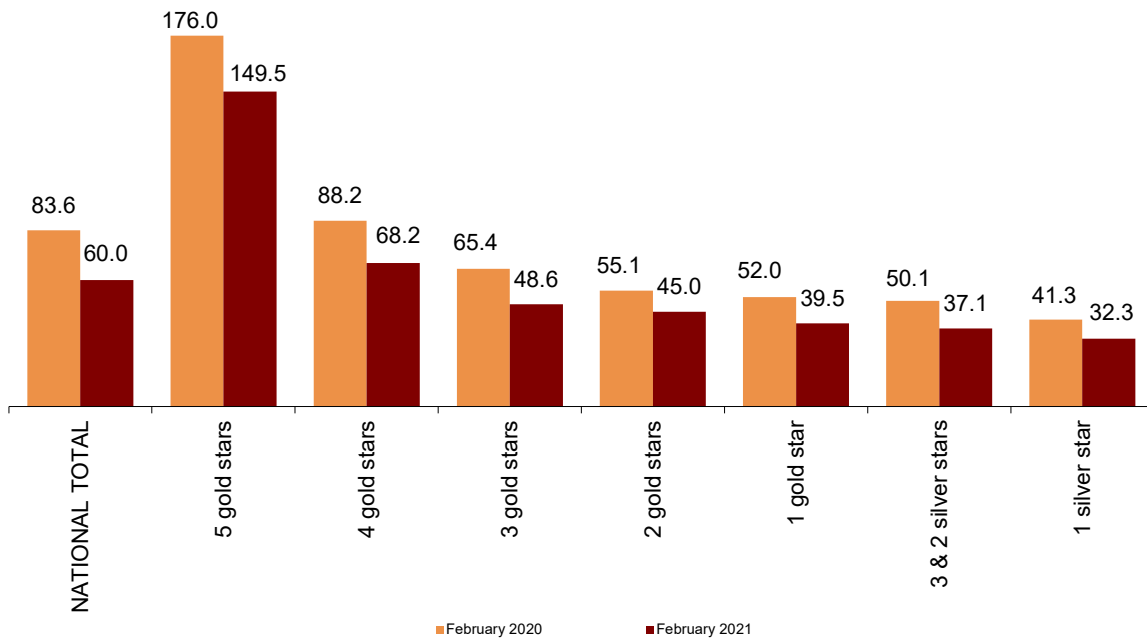
On the other hand, the average daily revenue per available room (RevPAR), which is conditioned by the occupancy registered in hotel establishments, reached 13.6 euros, with a 72.4% decrease.

By category, the average rate was 149.5 euros for five-star hotels, 68.2 euros for four-star hotels and 48.6 euros for three-star hotels. Revenue per available room for these same categories were 29.2, 16.6 and 11.8 euros, respectively.

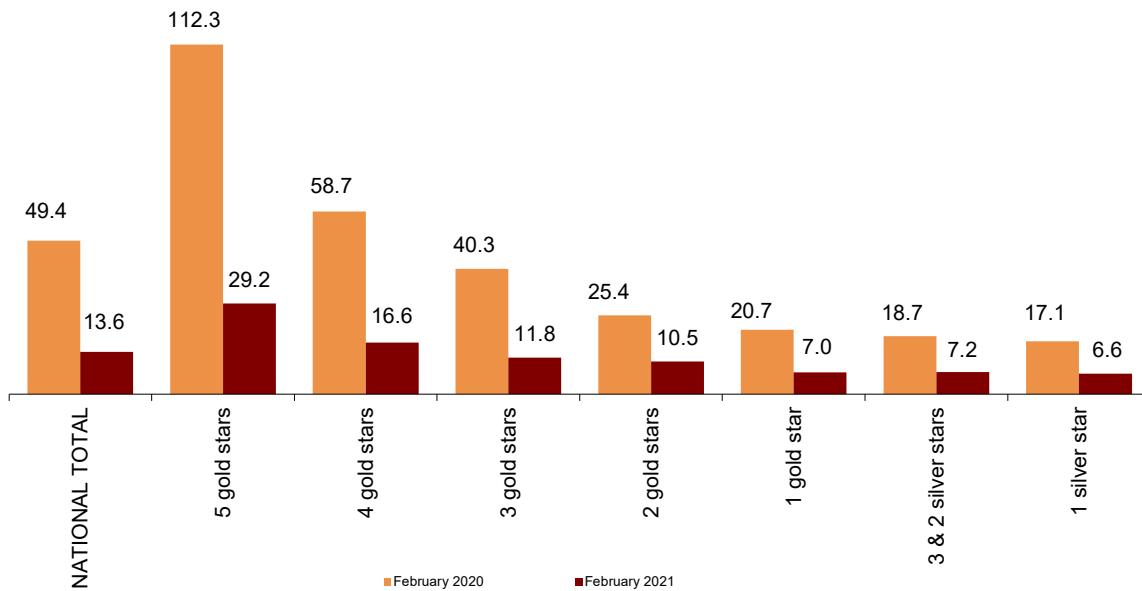
The tourist site<sup>1</sup> with the highest ADR and highest RevPAR was Naut Aran, with an average daily turnover per occupied room of 358.0 euros and income per available room of 42.8 euros.

<sup>1</sup> The Hotel Profitability Indicators of the provinces and main tourist areas and points have been published since 2021. [IRSH en www.ine.es](https://www.ine.es)

**Average daily rate by hotel category.**  
Euros



**Revenue per available room by hotel category**  
Euros



## Revision and updating of data

Coinciding with today's publication, the INE has updated the data corresponding to the month of February 2020 of the Hotel Occupancy Survey (HOS), the Hotel Price Index (HPI) and of the Indicators on the Profitability of the Hotel Sector (IPHS).

## Methodological note

The main objective of the Hotel Occupancy Survey (HOS) is to ascertain the behaviour of a series of variables that make it possible to describe the fundamental characteristics of the hotel sector, from the viewpoint of both supply and demand, thus meeting the needs of national institutions and the requirements of international organisations for knowledge regarding the sector.

The Hotel Price Index (HPI) is a statistical measure of the monthly evolution of prices applied to clients by hotel entrepreneurs.

The main objective of the Indicators of Profitability of the Hotel Sector (IRSH) is to facilitate decision-making in the hotel sector. These are the *Average Daily Rate* (ADR), which collects the average daily income per occupied room; and the *Revenue per Available Room* (RevPAR), which collects the average daily revenue per available room.

**Type of operation:** monthly continuous survey.

**Population scope:** all hotel establishments.

**Geographical scope:** the entire national territory.

**Reference period of the results:** the month.

**Reference period of the information:** seven consecutive days of each month, chosen randomly in such way that, between all the establishments, the entire month is covered.

**Sample design:** stratified sampling by province and establishment category, with 4 and 5 gold star categories being exhaustive.

**Sample size:** approximately 9,250 establishments in winter and 11,200 in summer.

**Collection method:** questionnaire filled in directly by the hotel establishment.

For more information on these statistical operations, you can consult the [methodology and the standardised methodological report](#) for each operation in INEbase.

INE statistics are produced in accordance with the Code of Good Practice for European Statistics, which is the basis for the institution's quality policy and strategy. For more information see the section on Quality at INE and the Code of Best Practices on the INE webpage.

---

For further information see **INEbase:** [www.ine.es/en/](http://www.ine.es/en/) Twitter: [@es\\_ine](https://twitter.com/es_ine)

All press releases at: [www.ine.es/en/prensa/prensa\\_en.htm](http://www.ine.es/en/prensa/prensa_en.htm)

**Press office:** Telephone numbers: (+34) 91 583 93 63 /94 08 – [gprensa@ine.es](mailto:gprensa@ine.es)

**Information Area:** Telephone number: (+34) 91 583 91 00 – [www.ine.es/infoine/?L=1](http://www.ine.es/infoine/?L=1)

---



## Tourist Accommodation Occupancy Survey (Hotels and similar establishments)

February 2021

Provisional Data

23rd March 2021

### 1. Guests, overnight stays and average stay by category of establishment

Category	Number of guests			Number of overnight stays			Average stay
	Total	Residents in Spain	Residents abroad	Total	Residents in Spain	Residents abroad	
<b>TOTAL</b>	1.152.795	954.619	198.176	2.384.740	1.739.081	645.659	2,07
<b>HOTELS: Golden stars</b>							
Five	76.231	53.132	23.100	183.176	84.501	98.675	2,40
Four	523.369	424.030	99.339	993.998	685.100	308.897	1,90
Three	266.250	227.634	38.616	488.193	386.148	102.045	1,83
Two	106.389	91.782	14.607	212.629	177.029	35.600	2,00
One	44.690	39.264	5.426	90.391	76.194	14.196	2,02
<b>INNS: Silver stars</b>							
Two and three	78.605	68.523	10.083	189.150	161.338	27.812	2,41
One	57.261	50.255	7.006	227.203	168.769	58.434	3,97
Annual rate	-82,14	-73,75	-92,97	-86,46	-75,17	-93,91	-24,17
Cumulative annual rate	-81,35	-72,29	-92,21	-85,77	-73,44	-93,28	-23,73

### 2. Open establishments, capacity, occupancy and employed personnel by category of establishment

Category	Estimated open establishments	Estimated bedrooms	Estimated bed-places	Occupancy rate			Employed personnel
				Of bed-places	Of bed-places at weekend	Of bedrooms	
<b>TOTAL</b>	7.261	256.957	517.337	16,44	18,03	23,04	45.555
<b>HOTELS: Golden stars</b>							
Five	105	18.723	39.584	16,47	23,45	19,16	7.941
Four	883	100.009	208.150	17,02	19,54	24,31	20.330
Three	912	48.631	100.042	17,41	18,56	24,47	7.729
Two	899	24.319	47.425	16,00	15,44	23,39	2.770
One	575	13.740	26.514	12,17	11,81	18,10	1.445
<b>INNS: Silver stars</b>							
Two and three	1.731	25.666	47.685	14,15	13,39	20,73	2.838
One	2.157	25.868	47.937	16,92	16,49	22,83	2.501
Annual rate	-42,88	-55,07	-56,35	-67,59	-69,61	-61,27	-72,34

### 3. Guests, overnight stays, occupancy, average stay and employed personnel

#### Results by area and tourist site

	Guests		Overnight stays		Occupancy rate			Average stay	Employed personnel
	Residents in Spain	Residents abroad	Residents in Spain	Residents abroad	Of bed-places	Of bed-places at weekend	Of bedrooms		
<b>Tourist area with a greater occupancy rate per month</b>									
Sur de Tenerife	15.433	12.446	33.333	78.363	22,71	30,59	25,24	4,01	3.570
Isla de Tenerife	25.426	17.577	52.829	94.499	22,34	29,25	26,19	3,43	4.339
Costa Barcelona	37.704	8.141	77.889	18.468	21,93	25,63	30,86	2,10	1.142
Isla de La Gomera	1.890	1.067	3.838	5.286	18,83	22,83	23,11	3,09	380
Isla de Gran Canaria	23.415	11.629	59.363	71.012	18,77	22,89	23,29	3,72	3.499
Terres de Lleida	7.377	795	12.000	1.538	18,77	18,10	27,24	1,66	183
Costa Cálida	6.132	988	12.871	2.088	17,84	20,81	24,01	2,10	249
isla de Fuerteventura	2.629	5.712	8.375	47.290	17,48	15,61	26,67	6,67	1.099

#### Tourist area with a greater number of overnight stays per month<sup>1</sup>

Barcelona	59.196	22.560	95.341	53.575	17,44	23,16	23,20	1,82	2.999
Sur de Gran Canaria	13.007	7.225	31.186	51.713	15,84	20,23	18,13	4,10	2.597
Costa del Sol	28.814	9.325	44.764	24.391	11,55	12,09	16,49	1,81	1.644
Costa Blanca	18.790	4.291	34.165	11.977	14,26	14,62	21,44	2,00	1.059
Costa de la Luz de Cádiz	18.795	3.144	30.304	13.491	16,32	16,56	24,51	2,00	696
Costa Brava	15.404	6.651	25.183	12.074	13,10	17,69	18,22	1,69	794
Rías Baixas	11.496	1.392	26.857	4.745	11,78	9,96	18,09	2,45	718
Rías Altas	8.906	786	24.150	3.095	16,04	13,31	24,77	2,81	383

<sup>1</sup>Sin considerar los incluidos en la tabla anterior, por aparecer también con mayor grado de ocupación.

#### Tourist site with a greater occupancy rate per month

Ceuta	2.035	100	5.060	269	30,64	22,73	38,12	2,50	111
Santa Cruz de Tenerife	5.936	2.242	10.951	4.460	30,45	32,19	45,88	1,88	260
Lleida	6.498	674	9.911	1.319	27,46	28,76	38,97	1,57	91
Palmas de Gran Canaria, Las	8.118	3.847	20.984	17.950	27,27	30,63	36,99	3,25	696
Arona	1.651	2.567	4.097	17.459	25,93	30,00	28,16	5,11	327
Monachil	3.429	642	7.298	1.330	24,47	33,40	27,78	2,12	177
Segovia	1.185	136	2.726	2.802	24,16	28,11	39,90	4,18	80
Alcalá de Henares	9.992	1.233	14.455	2.118	24,00	28,95	34,43	1,48	234
Adeje	9.497	6.607	18.987	45.011	23,94	31,54	26,42	3,97	2.203
Benasque	727	0	2.613	0	23,77	15,55	42,70	3,59	34

#### Tourist site with a greater number of overnight stays per month<sup>1</sup>

Madrid	113.509	34.836	201.202	98.812	22,64	26,90	29,65	2,02	4.076
Barcelona	51.762	21.145	84.543	48.891	17,22	23,07	22,90	1,83	2.800
San Bartolomé de Tirajana	9.305	5.652	20.209	39.537	16,88	21,10	18,47	3,99	1.985
Sevilla	33.722	2.882	50.489	7.423	16,96	21,90	22,67	1,58	963
Zaragoza	21.494	2.524	38.505	5.531	21,82	21,72	32,42	1,83	418
Valencia	21.115	4.290	32.882	8.404	14,42	14,31	21,58	1,63	833
Málaga	15.289	3.732	22.648	6.474	13,04	13,40	18,00	1,53	589
Bilbao	14.516	1.803	23.065	3.782	14,72	19,30	20,96	1,65	487
Marbella	5.634	3.758	11.030	14.033	16,10	18,65	27,85	2,67	714
Mogán	3.580	1.688	10.257	12.381	13,53	18,33	17,01	4,30	611

<sup>1</sup>Sin considerar los incluidos en la tabla anterior, por aparecer también con mayor grado de ocupación.

#### 4. Guests and overnight stays by country of residence

##### Results by country

Countries	Number of guests		Overnight stays	
	Total	%	Total	%
TOTAL	1.152.795	100,00	2.384.740	100,00
Residents in Spain	954.619	82,81	1.739.081	72,93
Residents abroad	198.176	17,19	645.659	27,07
Total Residents abroad	198.176	100,00	645.659	100,00
TOTAL Residents in EU (without Spain)	123.829	62,48	415.897	64,41
- Germany	14.976	7,56	74.298	11,51
- Austria	1.401	0,71	6.307	0,98
- Belgium	3.825	1,93	12.027	1,86
- Denmark	919	0,46	4.572	0,71
- Finland	651	0,33	2.383	0,37
- France	39.161	19,76	104.460	16,18
- Greece	732	0,37	1.935	0,30
- Ireland	2.526	1,27	9.736	1,51
- Italy	15.631	7,89	45.343	7,02
- Luxembourg	1.474	0,74	7.972	1,23
- Netherlands	7.567	3,82	19.929	3,09
- Poland	5.048	2,55	24.004	3,72
- Portugal	9.340	4,71	23.369	3,62
- Czech Republic	2.234	1,13	13.604	2,11
- Sweden	4.090	2,06	24.710	3,83
-Other EU countries <sup>1</sup>	14.255	7,19	41.249	6,39
Norway	627	0,32	2.300	0,36
United Kingdom	9.322	4,70	25.432	3,94
Russia	2.794	1,41	10.140	1,57
Switzerland	2.199	1,11	8.691	1,35
Rest of Europe	8.824	4,45	23.573	3,65
Japan	422	0,21	1.707	0,26
Republic of China	2.486	1,25	4.426	0,69
United States of America	4.927	2,49	17.611	2,73
Rest of America	22.271	11,24	60.827	9,42
Africa	10.967	5,53	47.903	7,42
Other countries	9.508	4,80	27.151	4,21

<sup>1</sup> Countries included in Other UE countries: Bulgaria, Cyprus, Croatia, Slovakia, Slovenia, Estonia, Hungary, Latvia, Lithuania, Malta and Romania

## Hotel Price Index (HPI). 2008 Base

February 2021

Provisional data

### 1. National General Index and breakdown by Autonomous Cities and Communities

	Index	Annual growth rate
TOTAL	89,01	-14,36
Andalucía	91,05	-12,04
Aragón	76,70	-16,67
Asturias, Principado de	75,75	-8,37
Balears, Illes	116,21	7,95
Canarias	113,69	-10,30
Cantabria	79,06	-13,51
Castilla y León	86,99	-7,07
Castilla - La Mancha	82,79	-9,87
Cataluña	66,98	-23,39
Comunitat Valenciana	92,03	-12,36
Extremadura	78,22	-13,58
Galicia	82,34	-11,35
Madrid, Comunidad de	67,37	-23,93
Murcia, Región de	77,32	-7,57
Navarra, Comunidad Foral de	80,78	-5,75
País Vasco	77,34	-18,67
Rioja, La	71,70	-22,79
Ceuta	84,91	-5,94
Melilla	99,00	3,16

### 2. National General Index and breakdown by categories

	Index	Annual growth rate
TOTAL	89,01	-14,36
HOTELS: Gold stars		
Five	84,84	-8,58
Fourth	87,95	-16,00
Three	92,58	-13,57
Two	89,42	-13,44
One	89,55	-17,63
HOSTALS: Silver stars		
Three and two	85,43	-17,83
One	88,22	-20,51

## Indicators on the Profitability of the Hotel Sector February 2021

Provisional data

### National ADR and RevPAR<sup>1</sup> and breakdown by Autonomous Cities and Communities

	ADR (in euros)	Annual growth rate	RevPar (in euros)	Annual growth rate
TOTAL	60,04	-28,20	13,64	-72,38
Andalucía	56,35	-19,28	11,23	-71,50
Aragón	46,33	-30,58	10,06	-69,64
Asturias, Principado de	44,81	-16,10	8,30	-59,15
Balears, Illes	65,53	-7,93	13,00	-66,51
Canarias	95,93	-10,05	22,85	-73,69
Cantabria	49,34	-21,08	11,32	-55,13
Castilla y León	44,93	-16,02	8,82	-57,98
Castilla - La Mancha	45,47	-16,37	9,02	-52,64
Cataluña	66,53	-32,10	15,79	-71,37
Comunitat Valenciana	51,27	-20,34	11,16	-70,16
Extremadura	45,85	-19,33	7,79	-62,05
Galicia	42,90	-17,47	6,15	-64,09
Madrid, Comunidad de	58,16	-35,01	18,28	-70,83
Murcia, Región de	46,71	-13,40	12,94	-53,11
Navarra, Comunidad Foral de	53,75	-10,53	15,11	-41,00
País Vasco	55,15	-20,64	12,88	-68,26
Rioja, La	48,23	-25,10	7,61	-74,39
Ceuta	63,29	-5,24	24,43	-35,11
Melilla	65,51	-6,08	23,46	-40,16

<sup>1</sup> ADR: Average Daily Rate  
RevPAR: Revenue per Available Room

### National ADR and RevPar<sup>1</sup> and breakdown by categories

	ADR (in euros)	Annual growth rate	RevPar (in euros)	Annual growth rate
TOTAL	60,04	-28,20	13,64	-72,38
<b>HOTELS: Gold stars</b>				
Five	149,51	-15,07	29,21	-73,99
Four	68,21	-22,69	16,58	-71,75
Three	48,57	-25,73	11,81	-70,70
Two	45,01	-18,34	10,53	-58,49
One	39,45	-24,06	7,00	-66,20
<b>GUESTHOUSES: Silver stars</b>				
Three and two	37,11	-25,98	7,18	-61,54
One	32,27	-21,77	6,63	-61,16

<sup>1</sup> ADR: Average Daily Rate  
RevPAR: Revenue per Available Room