

23 April 2008

**Hotel Tourism Short-Term Trends (HOS/HPI/HII)
March 2008. Provisional data**

**Overnight stays in hotel establishments increase 10.1% in March,
as compared with the same month of 2007**

The interannual rate of hotel prices increases 2.2%

During the month of March, 19.2 million overnight stays were registered in hotel establishments, indicating an increase of 10.1% with regard to the same month in 2007. The increase in overnight stays occurred both in residents, whose interannual rate was 16.8%, and in non-residents (with an interannual variation of 4.1%).

The average stay increased 2.5% as compared with March 2007, standing at 2.9 nights per guest.

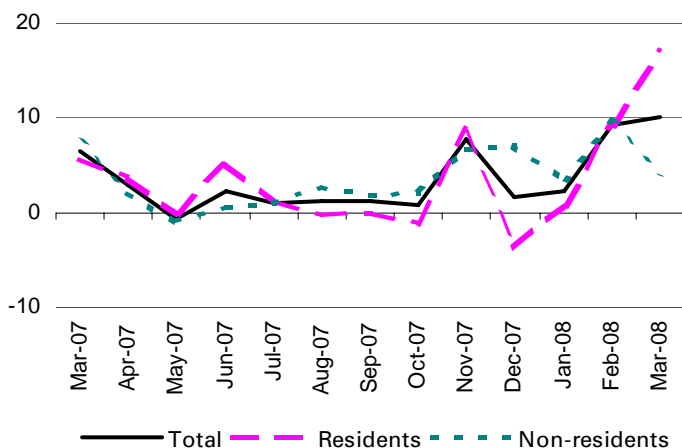
Since **Easter** fell in March this year, having fallen in April in 2007, it is appropriate to wait until the results are available for this survey for the month of April in order to analyse both months together.

During the first quarter of the year, overnight stays increased 7.6% as compared with the same period the previous year.

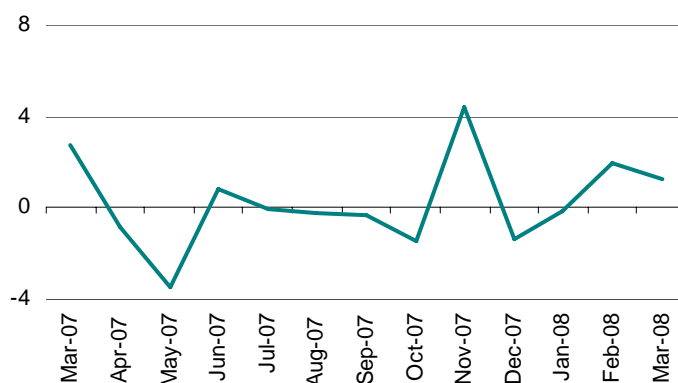
On the other hand, the **Hotel Price Index (HPI) registered an increase of 2.2%** in the month of March, a rate 0.1 points higher than that recorded the same month in 2007.

During the month of March, 50.8% of the available bedplaces were filled, which implied an increase of 1.2% as compared with the same month of the previous year. **The weekend occupancy rate by bedplaces stood at 56.8%**, with an interannual increase of 2.7%.

Interannual rates of overnight stays in %



Interannual occupancy rates by bedplaces in %

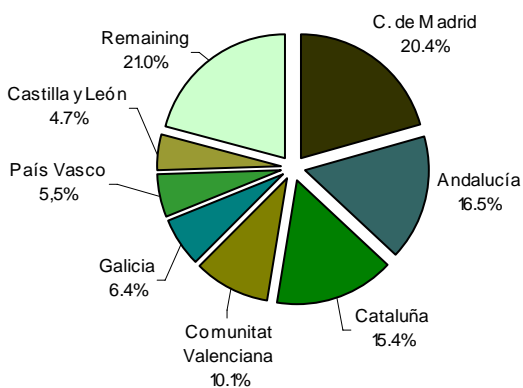


Overnight stays of German citizens increase

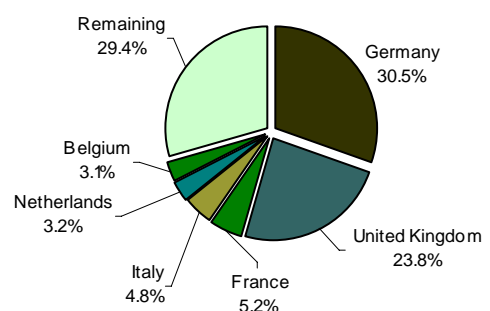
Guests from Germany and the United Kingdom registered 5.3 million overnight stays in March, accounting for 54.3% of the total for non-residents. The German market experienced an interannual increase in overnight stays of 1.8%, while the British market experienced a 0.5% decrease.

The overnight stays of French, Italian, and Dutch guests (the following markets) presented interannual rates of 7.5%, -1.7% and 9.9%, respectively.

Overnight stays of Spanish guests by Autonomous Community of origin in %



Overnight stays of foreign guests by country of origin in %

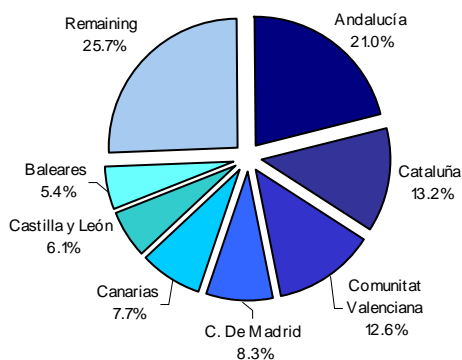


Canarias is the preferred destination for foreign guests

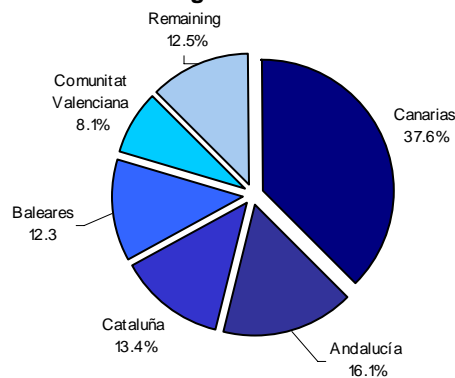
Most non-residents chose to go to Canarias. Within this Community, overnight stays by foreign nationals, which accounted for 37.6% of the national total, increased 0.8% in comparison with March 2007. It was followed by Andaluçía, with an interannual rate of 3.4% and Cataluña, with a rate of 8.8%.

Andaluçía, Cataluña and Comunitat Valenciana were the main destinations for Spaniards, with interannual rates for overnight stays of 17.1%, 28.1% and 4.0%, respectively.

Distribution of overnight stays of Spanish guests in %



Distribution of overnight stays of foreign guests in %



Canarias reaches the highest occupancy rate in the month of March

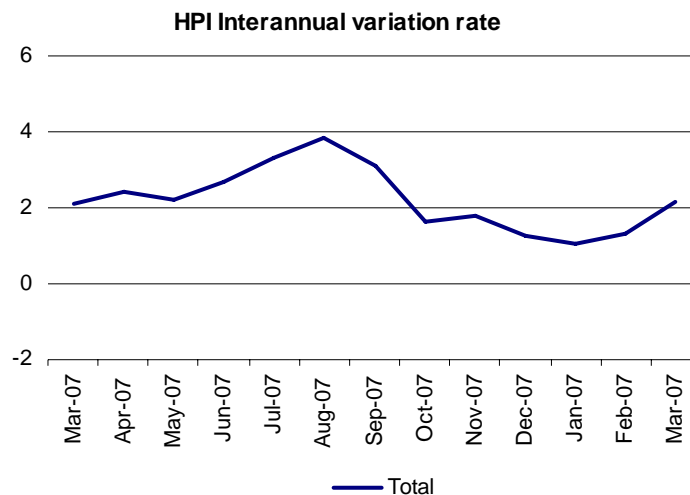
Canarias was the Autonomous Community with the highest occupancy rate by bedplaces during the month of March (71.1%). It was followed by Illes Balears (57.9%) and Comunidad de Madrid (53.6%).

The **holiday areas** with the highest occupancy and overnight stay rates appeared on islands and coasts. The island of La Gomera obtained the highest occupancy rate by bedplaces (94.2%), and the island of Tenerife the highest weekend occupancy rate by bedplaces (77.4%). Furthermore, it was in this area that the highest number of overnight stays was recorded in March, with over 1.9 million overnight stays.

The **tourist sites** with the highest number of overnight stays were Madrid, Barcelona and Adeje. San Bartolomé de Tirajana had the highest occupancy rate by bedplaces (77.9%) and Benasque had the highest weekend occupancy rate (87.9%).

Hotel prices increase 2.2% in the interannual rate in March

The interannual increase of the HPI stood at 2.2% in March, at a rate 0.9 points higher than the previous month, and 0.1 points above the interannual rate recorded one year ago.



Hotel prices decrease only in País Vasco

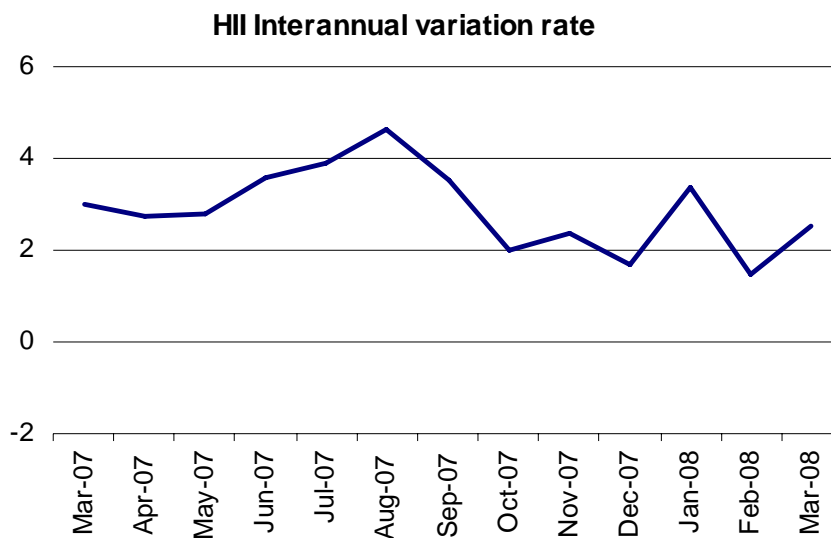
The four Communities (Canarias, Andalucía, Cataluña and Comunidad de Madrid) which accounted for 67.8% of the total weight of the Hotel Price Index in the month of March, recorded positive interannual rates.

Canarias, which carried the largest load in the weight structure this month (22.0%), showed an interannual rate of 1.8%, that is, 0.2 points higher than the rate estimated in February. Hotel prices experienced an increase of 2.0% in Andalucía, compared to the drop of one point recorded the previous month. Conversely, Cataluña recorded an interannual rate of 2.4%, that is, 0.9 points higher than last month. In Comunidad de Madrid the interannual rate was 2.0%, which implied a 0.2 point decrease as compared with February.

The interannual rate of the HII increases 2.5% in March

The Hotel Income Index (HII), which unlike the HPI, also considers the variation in the tariff structure, reflected an interannual rate of income per occupied room of 2.5% in March, 0.5 points lower than the rate recorded one year ago.

The five most important Communities in this indicator, during the month of March, experienced interannual increases in hotel income: Cataluña (3.3%), Comunidad de Madrid (2.8%), Andalucía (2.2%), Comunitat Valenciana (1.4%) and Canarias (1.0%).



Methodological note 2008

Hotel Price Index - Hotel Income Index

As of the year 2000, the INE publishes the Hotel Price Index (HPI) and the Hotel Income Index (HII), compiled with the information that hotel businesspersons include in a specific section of the Hotel Occupancy Survey questionnaire.

This part of the questionnaire has not been modified since it was incorporated in said year 2000. Nevertheless, the changes that have taken place in the sector over these past eight years have encouraged the introduction of certain modifications in the said section of the questionnaire. With these changes, we hope, on the one hand, **to collect the new distribution channels favoured by generalised Internet use**, and on the other hand, **to adapt the questionnaire to the terms and concepts that are most frequently used within the sector**, as well as the data available in the business management systems themselves.

This improvement will make it possible, **beginning in the year 2009, for the INE to disseminate the whole of the new variables demanded by the sector, these variables being considered ideal for measuring profitability**: the ADR (Average Daily Rate) and the RevPar (Average income per available room).

Throughout the year 2008, the HPI and the HII will continue to be disseminated, on a national level and by Autonomous Community. However, due to the aforementioned updating of the questionnaires, we will not provide the information on prices and income broken down by tariff and by establishment category, granted that in the current format, information is collected referring to the type of client rather than to the tariffs applied. Thus, for example, the "weekend" and "normal" tariffs will disappear, to form a joint "individuals" grouping; conversely, in the 2008 questionnaire, information will be collected on the different types of commercialisation, such as "direct online hiring", which was not previously requested.

Beginning in the year 2009, linked series will be offered on the different establishment categories, once sufficient information is available referring to the whole of the year 2008, allowing us to carry out said links with the utmost quality required.

For further information see INEbase-www.ine.es/en/welcome_en.htm All press releases at: www.ine.es/en/prensa/prensa_en.htm

Press office: Telephone: 91 583 93 63 / 94 08 – Fax: 91 583 90 87 - gprensa@ine.es

Information area: Telephone: 91 583 91 00 – Fax: 91 583 91 58 – www.ine.es/infoine

Tourist Accommodation Occupancy Survey (Hotels and similar establishments)

March 2008

Provisional data

1. Travellers, overnight stays and average stay by categories of establishment

Category	Number of travellers			Number of overnight stays			Average stay
	Total	Residents in Spain	Residents abroad	Total	Residents in Spain	Residents abroad	
TOTAL	6.607.370	4.094.147	2.513.223	19.179.709	9.507.492	9.672.217	2,90
HOTELS: Golden stars							
Five	341.414	171.480	169.934	935.939	340.694	595.245	2,74
Four	2.761.387	1.569.131	1.192.257	8.316.542	3.393.758	4.922.784	3,01
Three	1.998.473	1.251.472	747.001	6.206.424	3.198.175	3.008.249	3,11
Two	569.267	413.618	155.649	1.403.986	945.143	458.842	2,47
One	223.835	167.980	55.855	560.920	368.057	192.862	2,51
INNS: Silver stars							
Two and three	412.249	312.366	99.883	931.594	679.723	251.872	2,26
One	300.744	208.101	92.644	824.305	581.942	242.363	2,74
Interannual rate	7,40	8,62	5,48	10,05	16,79	4,13	2,46
Cumulative interannual rate	6,43	6,60	6,16	7,61	9,92	5,60	1,10

2. Open establishments, capacity, occupancy and employed personnel by categories of establishment

Category	Estimated open establishments	Estimated bedplaces	Level of occupancy			Employed personnel
			Per bedplaces	Per bedplaces at weekend	Per rooms	
TOTAL	14.089	1.205.309	50,79	56,57	55,64	181.575
HOTELS: Golden stars						
Five	196	65.971	45,45	55,85	54,54	21.589
Four	1.544	468.554	56,56	63,46	63,31	81.326
Three	2.162	347.253	57,00	61,07	60,52	48.193
Two	1.791	104.788	42,84	48,82	47,53	11.480
One	1.158	48.464	37,11	42,98	40,33	4.767
INNS: Silver stars						
Two and three	2.863	85.690	34,87	40,17	39,34	7.532
One	4.375	84.589	31,31	33,90	36,74	6.687
Interannual rate	6,98	8,21	1,22	2,68	-2,72	7,41

3. Travellers, overnight stays, occupancy, average stay and employed personnel

Results by areas and tourist sites

	Travellers		Overnight stays		Level of occupancy			Average stay	Employed personnel
	Residents in Spain	Residents abroad	Residents in Spain	Residents abroad	Per bedplace	Per bedplaces at weekend	Per rooms		
Tourist areas with a greater level of occupancy per month									
Isla de La Gomera	2.861	6.501	6.919	42.820	94,15	76,55	80,42	5,31	413
Isla de Gran Canaria	46.890	142.105	169.515	1.073.548	74,69	75,07	82,92	6,58	9.473
Isla de Tenerife	89.814	203.070	390.392	1.539.117	73,54	77,40	79,53	6,59	15.474
Isla de Fuerteventura	12.181	66.996	38.317	521.408	65,22	62,57	68,79	7,07	4.592
Isla de Lanzarote	26.648	67.472	106.309	405.358	64,89	67,52	72,89	5,44	4.449
Costa del Maresme	35.295	20.516	135.236	55.688	62,69	59,81	53,82	3,42	1.090
Costa de Barcelona	153.440	328.688	259.951	721.099	62,66	67,66	71,84	2,03	9.595
Isla de Menorca	10.649	645	44.902	2.721	62,07	73,99	65,78	4,22	309

Tourist areas with a greater number of overnight stays per month *

Isla de Mallorca	91.419	210.400	384.165	1.178.976	57,64	56,05	56,87	5,18	12.080
Costa del Sol	179.129	173.954	498.281	733.264	51,78	58,39	58,07	3,49	12.263
Costa Blanca	176.038	104.236	590.823	556.565	60,42	68,80	63,47	4,09	8.339
Costa Brava	105.749	94.702	321.392	303.893	47,40	51,81	46,60	3,12	5.475
Costa de la Luz de Cádiz	113.331	48.650	243.097	190.878	40,68	50,10	47,73	2,68	4.476
Costa de Almería	72.837	12.793	268.059	79.206	44,21	48,39	54,06	4,06	2.312
Costa Daurada	82.379	20.917	197.646	65.401	35,89	44,05	42,34	2,55	2.401
Pirineo Catalán	74.916	8.841	196.656	30.369	37,20	46,97	39,80	2,71	2.471

Tourist sites with a greater level of occupancy per month

San Bartolomé de Tirajana	22.709	90.356	109.064	743.204	77,87	77,81	84,56	7,54	6.730
Mogán	2.636	44.309	7.723	287.053	77,40	77,20	88,30	6,28	1.873
Adeje	17.789	97.067	95.126	762.760	77,40	81,85	83,65	7,47	7.039
Arona	11.514	46.520	61.353	370.470	77,06	79,36	84,36	7,44	2.862
Benasque	10.352	249	33.478	1.106	76,91	87,88	63,08	3,26	229
Puerto de La Cruz	30.759	25.152	150.969	247.385	76,37	79,62	76,18	7,12	3.097
Benidorm	81.128	64.356	380.964	446.428	75,64	82,54	75,80	5,69	4.931
Pájara	4.451	47.266	22.445	341.704	72,57	72,18	74,37	7,04	2.905
Lloret de Mar	30.322	47.430	188.376	207.887	70,60	75,10	77,21	5,10	1.929
Yaiza	7.309	27.243	32.552	171.006	70,11	75,25	80,14	5,89	1.836

Tourist sites with a greater number of overnight stays per month *

Madrid	340.305	299.874	573.673	635.822	56,23	64,13	65,79	1,89	12.592
Barcelona	148.403	328.545	252.544	721.240	63,03	68,39	72,60	2,04	9.500
Palma de Mallorca	40.545	71.793	143.492	370.568	59,95	54,64	57,99	4,58	4.225
Calviá	26.147	48.922	174.894	333.702	59,32	59,36	60,48	6,78	3.427
Torremolinos	39.895	46.984	148.412	202.717	60,72	64,03	65,36	4,04	2.298
Sevilla	88.646	69.555	167.424	143.303	57,97	61,70	65,79	1,96	2.865
Valencia	93.275	60.007	157.791	133.919	55,04	64,32	63,73	1,90	3.166
Granada	72.653	58.983	139.712	97.426	61,93	71,27	63,43	1,80	1.845
Benalmádena	23.593	36.973	62.966	172.759	58,23	61,20	63,57	3,89	1.408
Roquetas de Mar	28.668	4.745	155.685	58.956	52,15	53,58	62,64	6,42	1.183

* Not taken into account those included in the preceding table because they are in the bigger level of occupancy tables too.

4. Travellers, overnight stays, average stay.

Results by Autonomous Communities and provinces

Provinces	Number of tr			Overnight stays			Average stay
	Total	Residents in Spain	Residents abroad	Total	Residents in Spain	Residents abroad	
TOTAL	6.607.370	4.094.147	2.513.223	19.179.709	9.507.492	9.672.217	2,90
Andalucía	1.355.999	866.603	489.397	3.554.051	1.996.392	1.557.659	2,62
Almería	92.923	79.170	13.753	364.041	283.470	80.571	3,92
Cádiz	198.973	135.534	63.439	512.326	287.860	224.467	2,57
Córdoba	92.485	62.766	29.720	153.843	111.345	42.498	1,66
Granada	223.392	143.226	80.167	471.795	290.230	181.565	2,11
Huelva	91.304	74.389	16.915	236.390	159.737	76.653	2,59
Jaén	50.630	45.230	5.400	92.753	85.558	7.195	1,83
Málaga	390.108	201.698	188.410	1.306.656	543.224	763.432	3,35
Sevilla	216.185	124.590	91.595	416.246	234.969	181.277	1,93
Aragón	214.279	187.964	26.315	499.717	445.008	54.709	2,33
Huesca	78.381	73.536	4.845	222.359	209.264	13.094	2,84
Teruel	32.911	31.065	1.846	66.588	62.157	4.431	2,02
Zaragoza	102.987	83.363	19.624	210.770	173.587	37.184	2,05
Asturias (Principado de)	119.835	110.923	8.912	257.321	237.092	20.229	2,15
Balears (Illes)	332.574	118.850	213.724	1.701.955	512.517	1.189.439	5,12
Canarias	678.926	185.310	493.616	4.368.491	732.577	3.635.914	6,43
Palmas (Las)	362.293	85.720	276.573	2.314.454	314.140	2.000.314	6,39
Santa Cruz de Tenerife	316.633	99.590	217.042	2.054.037	418.437	1.635.600	6,49
Cantabria	77.761	67.803	9.958	168.511	147.809	20.702	2,17
Castilla y León	362.084	315.004	47.080	663.914	578.950	84.964	1,83
Ávila	28.415	25.509	2.907	48.112	43.325	4.787	1,69
Burgos	54.946	43.491	11.455	95.568	76.328	19.239	1,74
León	57.577	52.216	5.361	103.073	94.221	8.852	1,79
Palencia	19.098	16.845	2.253	34.651	30.462	4.189	1,81
Salamanca	75.476	62.854	12.622	153.361	130.918	22.443	2,03
Segovia	35.636	32.617	3.019	66.402	59.674	6.729	1,86
Soria	15.020	13.887	1.133	31.349	29.023	2.325	2,09
Valladolid	56.662	50.384	6.277	96.607	84.613	11.994	1,70
Zamora	19.253	17.202	2.052	34.791	30.386	4.405	1,81
Castilla-La Mancha	184.400	158.750	25.650	348.682	303.454	45.229	1,89
Albacete	27.998	25.829	2.169	62.247	56.827	5.421	2,22
Ciudad Real	38.876	34.455	4.422	74.135	65.724	8.411	1,91
Cuenca	32.992	29.210	3.782	61.335	54.743	6.592	1,86
Guadalajara	25.051	21.822	3.229	46.803	40.600	6.204	1,87
Toledo	59.483	47.435	12.048	104.161	85.561	18.600	1,75
Cataluña	1.081.238	548.894	532.344	2.547.407	1.253.881	1.293.526	2,36
Barcelona	675.057	270.050	405.007	1.403.989	510.852	893.136	2,08
Girona	219.934	125.517	94.417	667.076	364.703	302.372	3,03
Lleida	82.951	70.948	12.003	213.296	180.679	32.617	2,57
Tarragona	103.296	82.379	20.917	263.047	197.646	65.401	2,55
Comunitat Valenciana	630.278	432.428	197.851	1.975.005	1.196.285	778.720	3,13
Alicante	295.864	189.490	106.373	1.172.025	612.116	559.909	3,96
Castellón	83.051	70.253	12.798	239.436	204.553	34.882	2,88
Valencia	251.364	172.685	78.679	563.545	379.616	183.929	2,24
Extremadura	112.818	101.610	11.208	212.249	190.880	21.370	1,88
Badajoz	51.574	46.185	5.389	97.335	86.070	11.265	1,89
Cáceres	61.244	55.425	5.819	114.914	104.810	10.105	1,88
Galicia	264.703	226.383	38.320	581.043	496.687	84.356	2,20
Coruña (A)	114.166	94.785	19.381	258.908	218.531	40.377	2,27
Lugo	36.837	33.430	3.407	66.897	59.943	6.954	1,82
Ourense	28.442	26.136	2.306	54.506	48.666	5.840	1,92
Pontevedra	85.258	72.031	13.227	200.733	169.548	31.185	2,35
Madrid (Comunidad de)	810.755	472.460	338.295	1.511.534	791.706	719.827	1,86
Murcia (Región de)	103.381	85.332	18.049	274.214	223.307	50.907	2,65
Navarra (Comunidad Foral de)	55.038	45.906	9.131	106.882	90.327	16.555	1,94
País Vasco	170.241	122.276	47.966	305.953	216.815	89.138	1,80
Álava	22.230	18.240	3.990	39.650	33.201	6.449	1,78
Guipúzcoa	65.088	45.915	19.173	119.758	84.032	35.727	1,84
Vizcaya	82.923	58.121	24.802	146.545	99.583	46.962	1,77
Rioja (La)	43.182	39.416	3.765	81.220	74.936	6.284	1,88
Ceuta	6.087	5.273	814	12.141	11.083	1.058	1,99
Melilla	3.790	2.961	829	9.417	7.784	1.633	2,48

5. Establishment, capacity, occupancy and employed personnel

Results by Autonomous Communities and provinces

Provinces	Estimated open establishments	Estimated bedplaces	Level of occupancy			Employed personnel
			Per bedplaces	Per bedplaces at weekends	Per rooms	
TOTAL	14.089	1.205.309	50,79	56,57	55,64	181.575
Andalucía	2.435	241.242	47,11	53,99	52,75	34.466
Almería	201	27.025	43,39	48,03	52,82	2.610
Cádiz	451	41.294	39,78	49,78	46,63	5.697
Córdoba	194	9.579	51,23	60,96	55,02	1.257
Granada	397	28.273	52,78	61,29	53,54	3.929
Huelva	155	18.728	40,49	44,15	43,19	2.037
Jaén	185	8.352	35,45	44,88	39,99	1.271
Málaga	544	83.259	50,35	57,00	56,00	13.702
Sevilla	309	24.730	53,39	57,32	60,64	3.962
Aragón	744	35.289	44,67	55,58	48,66	5.019
Huesca	316	15.504	44,47	57,87	44,74	2.028
Teruel	192	6.572	32,33	43,77	35,22	821
Zaragoza	236	13.212	51,04	58,67	59,00	2.170
Asturias (Principado de)	644	23.858	34,51	43,20	39,66	3.018
Balears (Illes)	374	94.559	57,87	57,04	57,43	13.010
Canarias	501	194.840	71,12	72,93	77,79	35.158
Palmas (Las)	229	105.114	69,87	70,06	76,96	18.514
Santa Cruz de Tenerife	272	89.726	72,59	76,30	78,75	16.644
Cantabria	325	16.003	33,70	43,24	37,18	2.445
Castilla y León	1.441	58.478	36,35	45,98	41,59	8.226
Ávila	123	5.114	30,16	49,81	33,93	663
Burgos	220	8.794	34,83	38,76	39,22	1.197
León	288	10.463	31,54	40,25	38,42	1.254
Palencia	106	3.635	30,63	31,82	37,90	449
Salamanca	227	10.442	46,96	61,84	50,56	1.485
Segovia	126	5.399	39,38	54,78	43,78	850
Soria	113	3.636	27,65	33,59	31,37	513
Valladolid	147	7.696	40,16	46,64	47,77	1.265
Zamora	91	3.300	33,77	40,21	39,42	550
Castilla-La Mancha	809	31.798	35,09	41,80	40,94	3.832
Albacete	132	5.544	36,10	36,29	43,87	627
Ciudad Real	190	7.478	31,82	36,20	37,47	916
Cuenca	154	5.071	38,92	44,48	42,69	575
Guadalajara	145	4.936	30,43	38,75	37,50	487
Toledo	189	8.768	37,66	50,10	43,02	1.227
Cataluña	1.858	167.636	48,47	53,83	54,12	24.813
Barcelona	826	80.109	56,10	60,15	64,45	14.011
Girona	503	46.305	45,61	51,18	45,28	6.279
Lleida	332	17.726	38,09	44,05	41,16	2.122
Tarragona	197	23.495	35,89	44,05	42,34	2.401
Comunitat Valenciana	1.016	118.849	53,00	60,67	57,13	16.735
Alicante	452	64.050	58,25	66,82	61,35	8.750
Castellón	194	18.882	40,36	51,74	45,47	2.304
Valencia	370	35.917	50,29	54,20	55,37	5.680
Extremadura	374	16.857	40,27	49,79	43,93	2.452
Badajoz	152	7.657	40,61	52,25	46,73	1.158
Cáceres	222	9.200	39,98	47,75	41,53	1.295
Galicia	1.418	57.967	32,20	38,00	38,37	7.129
Coruña (A)	601	23.543	35,33	39,79	42,79	2.751
Lugo	271	8.464	25,35	27,98	28,74	934
Ourense	174	6.011	29,11	33,61	35,09	725
Pontevedra	373	19.949	32,33	41,46	38,19	2.719
Madrid (Comunidad de)	1.163	90.286	53,63	60,12	61,92	15.562
Murcia (Región de)	194	17.935	48,89	55,42	52,35	2.743
Navarra (Comunidad Foral de)	227	9.648	35,56	41,69	44,10	1.410
País Vasco	411	22.437	43,76	56,98	54,83	4.228
Álava	70	3.418	37,19	46,49	47,69	575
Guipúzcoa	196	8.705	44,11	56,40	49,18	1.557
Vizcaya	145	10.314	45,64	60,94	62,07	2.095
Rioja (La)	132	5.965	43,51	60,35	48,68	1.012
Ceuta	12	816	47,68	38,89	46,32	149
Melilla	11	848	35,75	40,66	47,83	168

HOS (TABLES ANNEX) - MARCH 2008 (4/9)

Provisional data

6. Percentage distribution of Spanish travellers in each province by Autonomous Community of origin

Results by provinces

(Continued)

Provinces	Total	Andalucía	Aragón	Asturias (P. de)	Balears (Illes)	Canarias	Cantabria	Castilla y León	Castilla-La Mancha	Cataluña
TOTAL	100	16,71	2,54	2,48	2,06	2,42	1,49	4,87	3,45	16,16
Álava	100	6,02	3,26	3,56	0,68	0,54	1,92	7,54	2,28	15,84
Albacete	100	8,99	1,61	1,10	1,21	0,32	0,53	3,82	19,52	10,04
Alicante	100	5,39	1,86	0,94	1,22	0,57	0,45	2,37	5,11	9,22
Almería	100	44,56	0,96	0,45	1,24	0,39	1,03	1,69	2,61	8,48
Asturias	100	3,78	1,71	13,68	0,90	0,76	3,84	9,77	2,11	5,03
Ávila	100	8,16	1,17	3,19	0,80	1,21	1,37	12,33	4,91	7,03
Badajoz	100	23,18	1,84	1,33	0,86	0,57	0,70	6,36	3,73	5,23
Balears (Illes)	100	19,35	0,47	0,46	27,20	1,57	2,05	1,01	1,43	17,81
Barcelona	100	8,25	2,87	1,33	2,73	1,82	1,31	2,50	1,95	37,72
Burgos	100	3,89	1,63	3,91	0,41	0,39	2,89	17,38	2,73	12,73
Cáceres	100	15,45	1,10	1,63	1,15	0,74	1,44	7,51	4,05	6,35
Cádiz	100	53,65	0,66	0,84	1,07	1,12	0,99	2,54	3,21	4,08
Cantabria	100	4,33	3,35	8,57	0,75	1,09	8,87	10,24	2,64	8,05
Castellón	100	3,68	3,14	0,74	2,59	0,67	0,60	2,18	2,86	22,45
Ciudad Real	100	15,25	1,65	1,01	0,90	0,33	0,76	3,58	20,67	6,34
Córdoba	100	41,97	0,80	0,67	1,24	1,02	0,56	2,84	3,25	8,41
Coruña (A)	100	6,40	1,62	6,29	1,36	1,07	0,99	5,55	1,90	9,04
Cuenca	100	6,78	1,43	1,69	0,80	0,63	1,01	4,54	11,01	9,84
Girona	100	4,72	1,48	1,59	0,76	0,76	0,49	1,10	2,67	69,54
Granada	100	43,27	0,67	1,23	0,80	0,79	0,35	2,63	2,89	8,70
Guadalajara	100	5,64	2,75	1,04	0,52	0,37	2,59	5,11	22,24	12,70
Guipúzcoa	100	5,40	3,88	2,54	1,03	1,20	1,47	7,39	1,92	19,73
Huelva	100	53,91	0,38	0,88	0,30	1,06	0,52	2,46	2,40	3,37
Huesca	100	2,18	17,19	1,82	0,89	1,41	1,46	4,56	1,82	20,52
Jaén	100	41,88	1,08	0,55	1,23	0,52	0,37	2,91	3,93	8,74
León	100	2,32	1,42	11,06	0,61	0,90	3,06	15,82	2,24	6,23
Lleida	100	1,94	1,94	1,32	1,88	0,86	0,58	1,70	0,84	61,40
Lugo	100	1,99	0,32	9,51	0,59	0,62	1,30	7,27	1,16	3,84
Madrid	100	15,25	2,73	3,14	2,14	3,35	2,19	4,82	3,13	13,97
Málaga	100	53,30	0,98	0,74	0,70	1,69	0,41	2,74	2,91	6,54
Murcia	100	12,36	1,58	0,72	1,02	1,39	0,89	3,98	7,86	9,50
Navarra	100	5,85	4,49	3,13	1,01	1,12	2,12	4,90	2,48	20,20
Ourense	100	1,67	0,31	4,83	0,23	0,46	0,86	5,38	1,44	4,64
Palencia	100	3,07	1,21	5,93	0,32	0,12	5,71	16,02	3,02	10,58
Palmas (Las)	100	5,50	0,41	0,65	1,22	28,96	0,42	1,11	0,68	9,17
Pontevedra	100	4,14	1,41	7,50	0,88	0,98	1,59	9,92	4,05	4,85
Rioja (La)	100	3,15	6,75	2,85	0,79	0,74	2,48	6,91	3,26	19,19
Salamanca	100	7,96	2,43	3,54	1,14	0,98	1,94	15,32	3,81	4,78
S. C. Tenerife	100	10,44	0,44	0,80	0,59	23,75	0,90	2,11	0,48	5,59
Segovia	100	5,10	1,91	2,40	0,63	0,80	2,64	13,81	4,46	5,86
Sevilla	100	40,33	1,06	1,04	1,42	1,61	1,27	2,55	2,83	8,31
Soria	100	2,05	5,21	2,45	0,73	0,70	1,84	17,13	4,13	18,82
Tarragona	100	4,06	5,22	0,64	1,32	0,35	0,61	0,86	1,18	57,87
Teruel	100	2,33	14,81	0,74	0,81	0,22	0,71	1,77	2,63	18,69
Toledo	100	11,25	2,10	2,36	0,38	0,47	1,21	6,28	13,02	8,02
Valencia	100	7,72	2,62	0,94	2,42	1,06	1,73	3,37	5,49	17,41
Valladolid	100	4,90	1,63	3,96	1,37	0,73	2,68	26,02	1,97	6,72
Vizcaya	100	4,35	2,45	2,67	1,20	0,97	1,64	6,09	2,65	17,70
Zamora	100	4,38	0,80	7,20	0,11	0,62	3,28	17,69	2,14	8,71
Zaragoza	100	7,20	15,11	1,85	0,83	0,95	1,54	5,21	3,16	21,96
Ceuta	100	49,04	0,41	2,44	0,36	0,68	1,43	1,13	2,42	3,49
Melilla	100	63,04	0,90	0,90	0,42	0,77	0,50	2,01	1,37	3,28

6. Percentage distribution of Spanish travellers in each province by Autonomous Community of origin

Results by provinces

(Conclusion)

Provinces	Comunitat Valenciana	Extremadura	Galicia	Madrid (C. de)	Murcia (Región de)	Navarra (C. Foral de)	País Vasco	Rioja (La)	Ceuta y Melilla
TOTAL	10,12	1,72	6,00	19,64	2,33	1,36	5,41	0,81	0,46
Álava	5,84	1,33	4,06	22,81	0,91	2,55	20,14	0,73	-
Albacete	19,86	1,85	3,27	19,09	5,40	1,17	1,65	0,38	0,20
Alicante	40,03	0,88	2,36	20,32	3,17	1,04	4,41	0,56	0,09
Almería	11,42	0,36	2,12	12,06	9,53	0,37	2,09	0,07	0,57
Asturias	4,26	1,25	18,50	20,24	0,62	1,00	11,18	1,30	0,09
Ávila	8,20	2,10	6,57	32,05	1,48	1,11	6,80	1,35	0,18
Badajoz	5,98	13,23	4,54	24,67	1,49	0,80	4,42	0,71	0,35
Balears (Illes)	8,25	0,63	1,14	14,04	0,55	0,18	1,86	1,93	0,07
Barcelona	7,86	1,05	2,91	17,45	1,65	1,57	4,29	1,05	1,68
Burgos	5,76	0,74	10,55	20,00	2,57	1,97	10,70	1,62	0,12
Cáceres	6,04	9,58	4,63	29,42	1,40	1,57	6,84	0,79	0,29
Cádiz	5,18	2,48	2,30	15,16	1,44	1,31	2,46	0,29	1,22
Cantabria	5,07	0,51	7,13	18,42	0,89	2,39	16,04	1,66	0,01
Castellón	32,17	0,71	1,54	18,04	2,02	1,30	4,34	0,89	0,07
Ciudad Real	11,12	2,57	2,53	23,91	3,02	1,22	4,30	0,64	0,20
Córdoba	8,49	3,09	1,26	20,56	2,14	0,65	2,35	0,23	0,47
Coruña (A)	3,35	1,17	35,61	18,55	0,79	0,82	4,80	0,50	0,18
Cuenca	23,80	1,17	2,27	24,67	3,84	1,90	4,04	0,40	0,19
Girona	5,75	0,63	1,03	5,80	0,28	0,62	2,61	0,13	0,03
Granada	9,86	1,94	1,45	17,15	3,89	0,59	2,46	0,68	0,64
Guadalajara	8,86	3,04	2,89	26,81	1,65	0,67	2,44	0,68	-
Guipúzcoa	5,82	0,92	4,29	15,60	0,43	3,99	23,32	1,01	0,08
Huelva	4,06	4,72	5,57	15,96	0,85	1,07	2,19	0,08	0,23
Huesca	6,57	0,19	2,46	24,33	0,82	2,64	10,22	0,91	0,03
Jaén	9,93	1,03	1,24	17,98	4,55	0,60	2,24	0,42	0,79
León	2,80	0,76	20,37	21,29	0,87	1,54	7,53	1,15	0,05
Lleida	8,36	0,40	1,08	10,56	1,03	0,84	4,68	0,27	0,32
Lugo	1,79	0,49	52,89	12,37	0,52	0,63	4,27	0,34	0,09
Madrid	10,34	2,58	5,15	19,13	2,96	1,93	5,33	1,39	0,47
Málaga	3,24	2,02	2,19	16,72	1,36	0,60	2,10	0,22	1,54
Murcia	19,25	0,86	2,07	15,46	19,70	0,62	1,76	0,72	0,27
Navarra	8,17	0,99	5,46	15,37	1,19	8,14	14,06	1,30	0,01
Ourense	2,02	0,73	61,48	12,40	0,31	0,41	2,47	0,12	0,24
Palencia	5,82	1,02	9,02	20,15	1,33	2,91	11,16	2,54	0,09
Palmas (Las)	1,39	0,38	1,30	45,76	0,33	0,20	2,21	0,24	0,06
Pontevedra	3,50	0,91	33,63	16,50	0,59	1,63	7,41	0,39	0,11
Rioja (La)	7,16	0,39	5,64	17,05	1,23	2,76	15,90	3,28	0,48
Salamanca	6,73	3,82	7,24	26,37	1,44	1,95	9,50	0,85	0,20
S. C. Tenerife	1,47	0,34	2,18	46,84	0,20	0,38	2,92	0,38	0,18
Segovia	9,36	2,02	3,12	35,64	2,22	2,27	6,91	0,75	0,11
Sevilla	6,05	3,15	2,11	22,04	2,32	0,52	2,48	0,46	0,45
Soria	5,73	0,96	4,17	23,26	0,36	2,72	8,56	1,08	0,09
Tarragona	9,19	0,28	2,04	6,86	1,35	1,75	5,72	0,61	0,09
Teruel	36,15	0,41	1,38	12,91	1,24	1,50	3,22	0,49	-
Toledo	14,65	3,08	5,29	16,34	3,16	1,57	9,44	1,02	0,34
Valencia	22,07	0,85	2,47	22,87	3,65	1,20	3,42	0,56	0,14
Valladolid	5,38	1,42	8,60	25,32	0,94	1,06	5,85	0,97	0,48
Vizcaya	5,14	1,21	5,75	21,41	1,33	2,70	21,78	0,98	0,00
Zamora	4,28	2,05	14,22	24,43	1,17	1,36	5,83	1,39	0,35
Zaragoza	8,22	0,78	2,98	20,18	1,02	2,04	5,55	1,10	0,35
Ceuta	1,85	2,48	1,74	18,82	0,52	1,43	0,41	-	11,35
Melilla	1,14	0,75	1,75	10,60	2,46	2,26	1,87	0,13	5,85

7. Percentage distribution of overnight stays in each province by Autonomous Community of origin

Results by provinces

(Continued)

Provinces	Total	Andalucía	Aragón	Asturias (P. de)	Balears (Illes)	Canarias	Cantabria	Castilla y León	Castilla-La Mancha	Cataluña
TOTAL	100	16,54	2,55	2,32	2,14	2,89	1,43	4,66	3,48	15,43
Álava	100	7,18	3,62	3,51	0,62	0,40	2,19	7,83	2,48	16,61
Albacete	100	9,52	1,01	1,38	0,87	0,36	0,35	2,41	24,87	9,04
Alicante	100	6,36	2,18	1,52	0,92	0,65	0,80	2,79	4,54	10,36
Almería	100	37,13	2,82	1,37	1,58	0,29	1,69	2,19	2,61	12,90
Asturias	100	5,03	1,95	10,61	0,97	1,26	2,78	9,25	2,25	5,12
Ávila	100	9,97	1,14	3,48	0,80	1,25	1,18	11,24	5,64	7,52
Badajoz	100	21,49	2,30	1,36	0,60	0,79	0,74	6,11	4,39	5,48
Balears (Illes)	100	28,35	0,48	0,35	17,28	1,43	2,71	1,69	1,41	18,72
Barcelona	100	9,77	2,51	1,14	2,88	2,51	1,69	2,46	2,06	34,49
Burgos	100	3,39	1,34	4,20	0,35	0,27	2,84	19,09	3,37	11,18
Cáceres	100	15,60	1,14	1,58	1,47	0,79	1,16	5,74	3,30	6,49
Cádiz	100	49,37	0,64	0,78	1,11	1,58	0,84	2,33	3,47	4,46
Cantabria	100	4,60	3,66	8,11	0,68	1,36	8,64	9,92	2,65	8,91
Castellón	100	4,17	3,32	1,06	2,92	1,90	0,50	2,03	3,91	17,80
Ciudad Real	100	16,12	1,26	0,85	0,71	0,23	0,72	3,02	22,03	6,28
Córdoba	100	40,30	0,72	0,80	1,95	1,54	0,58	2,84	3,19	9,31
Coruña (A)	100	6,57	1,41	5,54	0,91	1,72	0,83	5,67	1,69	7,01
Cuenca	100	6,75	1,63	2,18	0,77	0,50	0,83	4,23	12,68	9,66
Girona	100	8,43	1,32	2,42	0,45	3,88	0,55	0,84	4,16	52,84
Granada	100	39,24	0,79	2,02	0,89	1,12	0,44	3,04	2,91	9,00
Guadalajara	100	5,47	2,79	1,28	0,66	0,36	1,51	5,01	22,72	11,18
Guipúzcoa	100	5,28	3,86	2,55	1,20	1,25	1,40	6,23	1,82	22,53
Huelva	100	46,08	1,20	0,78	1,19	1,10	0,75	3,70	2,53	4,47
Huesca	100	2,36	14,40	3,34	0,96	1,71	1,49	5,57	1,91	16,80
Jaén	100	42,26	1,09	0,49	1,20	0,62	0,28	2,65	3,49	9,44
León	100	2,36	1,62	10,23	0,42	0,80	3,04	17,92	2,15	5,72
Lleida	100	1,90	1,61	1,74	2,16	0,66	0,56	2,30	1,15	54,65
Lugo	100	1,52	0,34	8,42	0,54	0,66	1,32	6,83	1,35	3,63
Madrid	100	14,43	2,70	3,21	2,19	3,84	2,23	4,72	2,87	14,82
Málaga	100	45,90	1,60	1,47	0,65	2,13	0,37	4,24	3,14	6,77
Murcia	100	13,84	2,07	1,12	1,04	1,79	0,62	4,86	10,49	9,92
Navarra	100	6,27	5,71	2,85	0,95	1,86	1,86	4,82	2,72	20,47
Ourense	100	1,70	0,27	3,93	0,27	0,38	0,79	6,11	1,05	3,31
Palencia	100	3,57	1,08	6,71	0,48	0,09	4,36	17,98	3,03	7,57
Palmas (Las)	100	5,66	0,29	0,96	0,97	21,89	0,51	1,42	0,80	7,69
Pontevedra	100	5,22	1,96	5,67	0,91	1,54	1,56	8,50	5,74	3,87
Rioja (La)	100	3,56	7,17	2,47	0,70	0,61	2,00	7,43	3,09	18,47
Salamanca	100	8,23	2,48	3,77	1,19	0,87	1,76	18,69	3,39	4,73
S. C. Tenerife	100	11,84	0,48	1,04	0,57	14,69	1,13	3,45	0,55	4,60
Segovia	100	5,71	1,94	2,60	0,55	0,69	3,14	14,60	4,08	7,63
Sevilla	100	35,42	1,13	1,26	1,29	1,81	1,21	2,71	2,97	9,63
Soria	100	2,17	4,18	4,51	0,69	0,99	1,57	22,25	3,26	18,09
Tarragona	100	6,78	5,66	0,89	2,64	0,48	0,61	0,86	1,21	50,87
Teruel	100	2,27	16,17	0,92	0,85	0,20	0,58	1,73	2,65	18,35
Toledo	100	11,72	2,17	2,51	0,41	0,36	1,30	5,93	12,49	8,86
Valencia	100	8,14	2,88	0,88	1,90	1,72	1,49	3,96	5,65	16,41
Valladolid	100	6,24	1,97	3,66	1,65	2,58	2,49	21,59	2,15	7,02
Vizcaya	100	4,62	2,30	2,64	1,21	1,36	1,28	5,92	2,53	18,54
Zamora	100	4,47	0,48	5,81	0,05	0,53	4,12	18,07	1,60	14,68
Zaragoza	100	6,62	16,01	1,61	0,73	1,04	1,27	6,01	2,86	23,37
Ceuta	100	55,38	0,32	1,87	0,17	0,35	0,73	0,69	1,55	1,70
Melilla	100	60,40	0,68	0,51	0,28	0,76	0,51	2,10	0,98	2,33

7. Percentage distribution of overnight stays in each province by Autonomous Community of origin

Results by provinces

(Conclusion)

Provinces	Comunitat Valenciana	Extremadura	Galicia	Madrid (C. de)	Murcia (Región de)	Navarra (C. Foral de)	País Vasco	Rioja (La)	Ceuta y Melilla
TOTAL	10,13	1,67	6,36	20,43	2,11	1,25	5,50	0,75	0,35
Álava	5,65	0,78	4,25	22,72	0,87	2,07	18,75	0,48	-
Albacete	19,09	1,19	3,02	19,38	5,02	0,72	1,36	0,23	0,17
Alicante	30,91	1,21	5,70	20,72	2,90	1,54	5,84	0,96	0,10
Almería	10,77	0,29	2,80	12,25	7,33	0,73	2,98	0,05	0,23
Asturias	5,60	1,28	16,14	22,95	0,53	1,02	11,21	1,77	0,29
Ávila	8,62	2,33	5,93	30,74	1,49	1,01	6,24	1,32	0,10
Badajoz	6,56	14,45	4,47	23,05	1,79	0,93	4,48	0,78	0,22
Balears (Illes)	8,66	0,41	1,22	13,20	0,46	0,06	2,31	1,23	0,02
Barcelona	7,77	0,98	3,74	16,53	1,90	1,92	4,83	0,89	1,94
Burgos	7,42	0,69	11,60	17,74	3,22	1,47	10,50	1,19	0,14
Cáceres	6,16	9,42	4,28	31,10	1,50	1,42	7,82	0,80	0,24
Cádiz	5,10	2,12	3,01	16,72	1,46	1,86	4,14	0,31	0,70
Cantabria	6,37	0,69	7,84	17,91	1,39	2,14	13,56	1,52	0,06
Castellón	28,90	1,61	1,54	20,53	1,35	1,56	5,99	0,86	0,03
Ciudad Real	12,62	2,86	2,81	21,97	3,25	0,87	3,78	0,47	0,14
Córdoba	8,09	2,75	1,53	20,29	2,28	0,66	2,31	0,22	0,65
Coruña (A)	3,37	1,03	42,94	14,58	0,79	0,73	4,59	0,50	0,11
Cuenca	22,74	1,31	2,62	23,32	4,90	1,34	4,19	0,25	0,10
Girona	8,44	2,38	4,42	6,25	0,21	0,55	2,75	0,09	0,01
Granada	9,76	1,98	2,76	17,89	3,63	0,54	2,72	0,70	0,59
Guadalajara	10,80	4,24	4,19	24,48	1,51	0,40	2,97	0,43	-
Guipúzcoa	6,06	1,14	5,25	15,97	0,50	3,09	20,96	0,84	0,08
Huelva	5,86	4,27	7,60	15,45	0,95	0,81	3,02	0,04	0,23
Huesca	6,72	0,22	2,90	28,88	0,82	2,33	8,82	0,75	0,04
Jaén	11,20	1,20	0,91	17,58	4,20	0,55	2,01	0,25	0,57
León	2,59	0,62	21,25	20,36	0,89	1,50	7,57	0,92	0,04
Lleida	10,66	0,77	1,13	13,97	0,84	0,80	4,70	0,31	0,10
Lugo	1,50	0,61	51,87	16,03	0,30	1,07	3,71	0,23	0,07
Madrid	10,30	2,54	6,41	18,14	2,62	1,86	5,43	1,32	0,38
Málaga	2,86	2,86	3,86	16,45	1,76	0,57	4,27	0,16	0,93
Murcia	16,14	1,27	2,07	16,56	14,56	0,59	1,74	1,02	0,30
Navarra	7,92	1,07	5,68	15,24	1,11	7,39	12,77	1,30	0,01
Ourense	1,54	0,78	62,30	14,71	0,19	0,45	1,88	0,22	0,12
Palencia	5,07	0,89	9,03	19,23	2,59	3,16	11,61	3,48	0,08
Palmas (Las)	1,21	0,23	1,60	53,38	0,25	0,18	2,81	0,13	0,04
Pontevedra	3,71	0,75	30,60	16,87	0,55	1,29	10,59	0,59	0,08
Rioja (La)	8,76	0,35	5,14	16,18	2,13	2,47	16,60	2,64	0,24
Salamanca	7,24	3,82	6,90	23,83	1,21	1,99	9,05	0,74	0,11
S. C. Tenerife	2,44	0,69	2,60	50,05	0,22	0,42	4,38	0,80	0,05
Segovia	9,73	1,96	3,69	29,36	3,22	2,72	7,42	0,78	0,17
Sevilla	7,82	2,93	2,69	21,74	2,40	0,70	3,30	0,57	0,41
Soria	5,15	1,09	3,93	20,63	0,33	1,83	8,35	0,91	0,08
Tarragona	7,82	0,20	3,00	6,45	1,34	2,38	7,90	0,81	0,10
Teruel	36,56	0,53	1,45	11,78	1,14	1,44	3,00	0,37	-
Toledo	16,95	3,00	5,61	13,33	3,02	1,52	9,66	0,91	0,25
Valencia	22,29	0,72	2,78	22,61	2,85	1,32	3,71	0,57	0,10
Valladolid	5,69	1,45	7,94	24,39	1,01	1,03	6,94	1,06	1,14
Vizcaya	6,17	1,17	6,66	21,60	1,44	2,43	19,39	0,72	0,01
Zamora	4,30	1,80	11,35	24,51	1,10	0,89	4,62	1,42	0,20
Zaragoza	7,13	0,82	3,78	20,45	0,96	1,67	4,69	0,76	0,22
Ceuta	1,17	3,24	1,25	19,35	0,43	1,58	0,43	-	9,78
Melilla	1,30	0,34	1,08	15,41	1,53	3,12	1,50	0,06	7,10

8. Travellers, overnight stays and average stay by country of residence

Results by countries

Countries	Number of travellers		Overnight stays	
	Total	%	Total	%
TOTAL	6.607.370	100,00	19.179.709	100,00
Residents in Spain	4.094.147	61,96	9.507.492	49,57
Residents abroad	2.513.223	38,04	9.672.217	50,43
Total Residents in Spain	2.513.223	100,00	9.672.217	100,00
Total Residents in U.E. (without Spain)	1.898.032	75,52	8.148.055	84,24
- Germany	522.548	20,79	2.952.068	30,52
- Austria	25.589	1,02	94.919	0,98
- Belgium	66.640	2,65	295.390	3,05
- Denmark	35.194	1,40	161.406	1,67
- Finland	24.713	0,98	118.846	1,23
- France	207.442	8,25	497.151	5,14
- Greece	7.618	0,30	19.880	0,21
- Ireland	43.096	1,71	162.031	1,68
- Italy	169.853	6,76	464.876	4,81
- Luxembourg	5.375	0,21	27.121	0,28
- Netherlands	81.839	3,26	311.675	3,22
- Poland	11.918	0,47	38.813	0,40
- Portugal	108.819	4,33	288.723	2,99
- United Kingdom	491.058	19,54	2.305.050	23,83
- Czech Republic	7.428	0,30	25.448	0,26
- Sweden	52.716	2,10	270.899	2,80
- Rest of UE*	36.185	1,44	113.759	1,18
Norway	34.834	1,39	194.167	2,01
Russia	17.894	0,71	70.985	0,73
Switzerland	38.413	1,53	112.228	1,16
Rest of Europe	56.613	2,25	178.064	1,84
Japan	65.313	2,60	99.889	1,03
United States of America	138.379	5,51	294.847	3,05
Rest of America	136.568	5,43	303.602	3,14
African's countries	27.293	1,09	56.138	0,58
Rest of the world	99.885	3,97	214.241	2,22

*Countries included in the Rest of UE: Bulgaria, Cyprus, Slovakia, Slovenia, Estonia, Hungary, Latvia, Lithuania, Malta and Romania

HOTEL INCOME INDEX (HII)

March 2008

Provisional data

General Autonomous Communities and national indices

	Index	Interannual variation rate
TOTAL	123,1	2,5
Andalucía	113,8	2,2
Aragón	143,5	5,7
Asturias (Principado de)	119,1	7,7
Balears (Illes)	118,4	4,2
Canarias	114,1	1,0
Cantabria	112,4	3,6
Castilla y León	128,5	1,2
Castilla-La Mancha	132,6	1,4
Cataluña	140,0	3,3
Comunitat Valenciana	119,1	1,4
Extremadura	127,5	5,1
Galicia	114,1	1,5
Madrid (Comunidad de)	130,1	2,8
Murcia (Región de)	111,0	-0,6
Navarra (Comunidad Foral de)	119,2	3,2
País Vasco	108,5	0,6
Rioja (La)	126,5	4,2
Ceuta	116,6	8,1
Melilla	149,4	-0,5

Hotel Price Index (HPI)

March 2008

Provisional data

General Autonomous Communities and national indices

March	Index	Interannual variation rate
TOTAL	114,8	2,2
Andalucía	112,2	2,0
Aragón	141,7	4,7
Asturias (Principado de)	112,1	5,3
Balears (Illes)	113,2	4,6
Canarias	115,9	1,8
Cantabria	110,3	1,6
Castilla y León	117,2	0,7
Castilla-La Mancha	126,7	1,2
Cataluña	121,4	2,4
Comunitat Valenciana	110,7	2,2
Extremadura	122,7	2,1
Galicia	113,7	1,1
Madrid (Comunidad de)	116,7	2,0
Murcia (Región de)	117,1	1,5
Navarra (Comunidad Foral de)	124,4	0,9
País Vasco	108,6	-0,3
Rioja (La)	121,4	2,0
Ceuta	127,1	10,5
Melilla	113,3	8,9

HPI (ANNEX OF TABLES) - March 2008

23rd April 2008