

Hotel Tourism Short-Term Trends (HOS/HPI/HII)
April 2008. *Provisional data*

Overnight stays in hotel establishments decrease 11.5% in April, as compared with the same month of 2007

The interannual rate of hotel prices decreases 0.5%

During the month of April, 19.2 million overnight stays were registered in hotel establishments, indicating a decrease of 11.5% with regard to the same month in 2007. This decrease reached 21% in the case of residents and 2.2% for non-residents, and was due at least in part to the Holy Week effect, which this year was held in March, whereas in 2007 it was held in April.

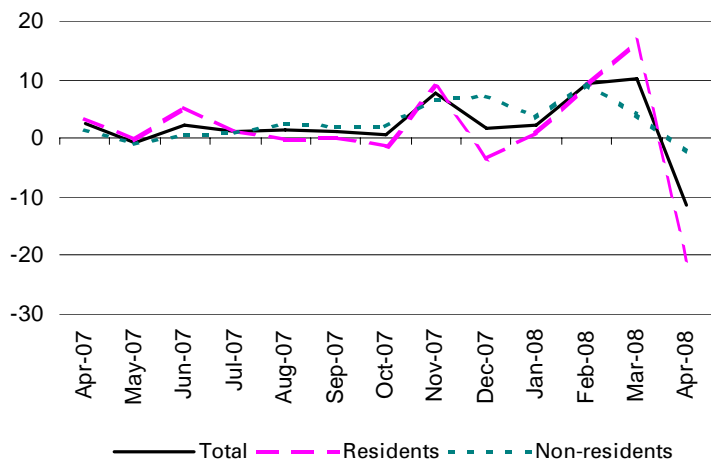
On analysis of the **March-April aggregate period**, a 1.9% decrease in overnight stays was recorded, as compared with the same two months in 2007. In the aforementioned period, overnight stays by residents decreased 4.7%, whilst those by non-residents increased 0.7%.

On the other hand, the **Hotel Price Index (HPI) registered a decrease of 0.5%** in the month of April, a rate 3.2 points lower than that recorded the same month in 2007.

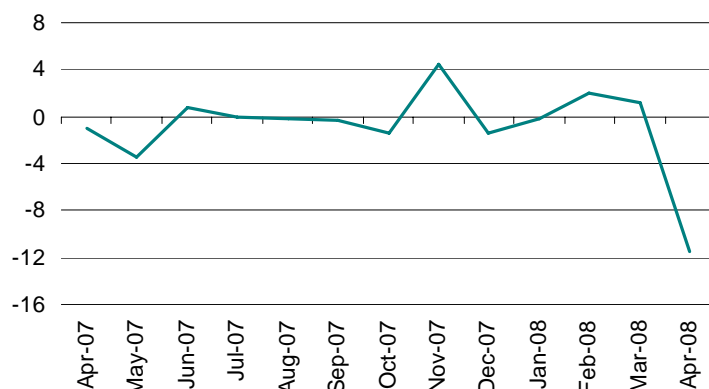
During the month of April, 49.2% of the available bedplaces were filled, which implied a decrease of 11.5% as compared with the same month of the previous year. **The weekend occupancy rate by bedplaces stood at 53.6%**, with an interannual decrease of 15.4%.

In the **March-April period**, 50% of available bedplaces were filled, 5.9% less than for the same period in 2007. The occupancy rate by bedplace at weekends was 55.1%, that is, 7.5% lower than for last year.

Interannual rates of overnight stays in %



Interannual occupancy rates by bedplaces in %



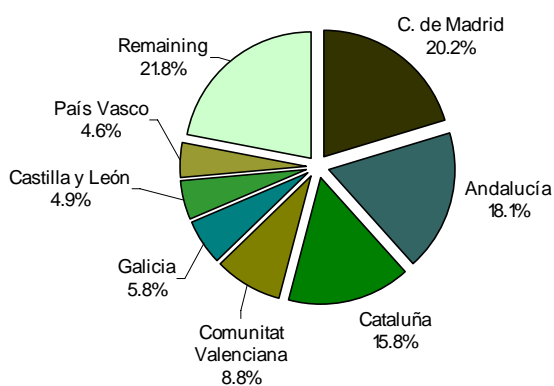
Overnight stays of German and British citizens decrease

Guests from Germany and the United Kingdom registered 5.8 million overnight stays in April, accounting for 53.6% of the total for non-residents. Nevertheless, in the two main countries of origin, overnight stays decreased as compared with April 2007, by 1.9% and 2.7%, respectively.

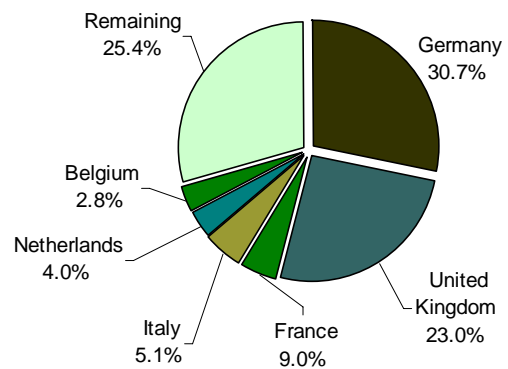
The overnight stays of French, Italian, and Dutch guests (the following markets) presented interannual rates of 1.3%, -10% and 20.7%, respectively.

In the March to April 2008 aggregate period, these five also constituted the main countries of origin and in the same order as in April, with interannual rates of evolution of -0.2%, -1.7%, 3.3%, -6.4% and 15.9%, respectively.

Overnight stays of Spanish guests by Autonomous Community of origin in %



Overnight stays of foreign guests by country of origin in %

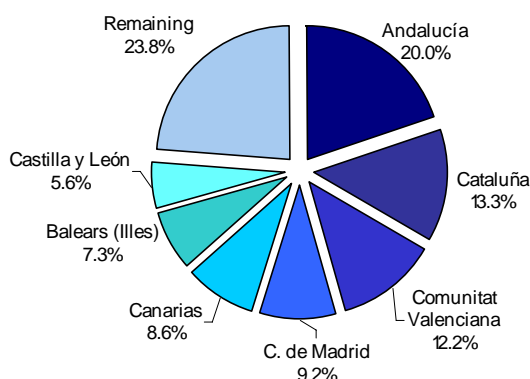


Canarias is the preferred destination for foreign guests

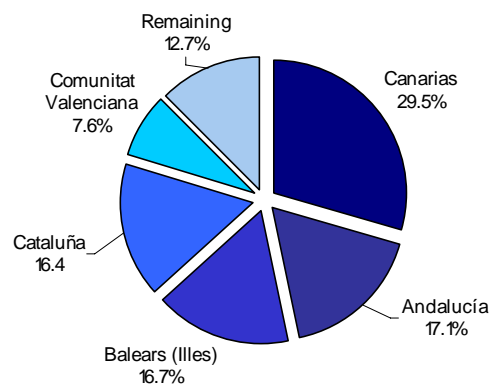
Most non-residents chose to go to Canarias. Within this Community, overnight stays by foreign nationals, which accounted for 29.5% of the national total, increased 2.2% in comparison with April 2007. It was followed by Andalucía, with an interannual rate of 1.3% and Illes Balears, with a rate of -10.9%. **In March and April taken as a whole**, Canarias continued to be the Autonomous Community with the highest number of overnight stays by non-residents, ahead of Andalucía and Cataluña. The interannual growth rates of these three Communities were: 1.5%, 2.2% and -3.5%

Andalucía, Cataluña and Comunitat Valenciana were the main destinations for Spaniards, with interannual rates for overnight stays of -24.1%, -23.3% and -30.7%, respectively. **In the March to April aggregate period**, these Communities maintained the same order of preference for resident guests, and the interannual variation rates for the respective overnight stays were: -6.2%, -2.7% and -15.6%

Distribution of overnight stays of Spanish guests in %



Distribution of overnight stays of foreign guests in %



Canarias reaches the highest occupancy rate in the month of April

Canarias was the Autonomous Community with the highest occupancy rate by bedplaces during the month of April (67.9%). It was followed by Illes Balears (58.4%) and Comunidad de Madrid (55.6%).

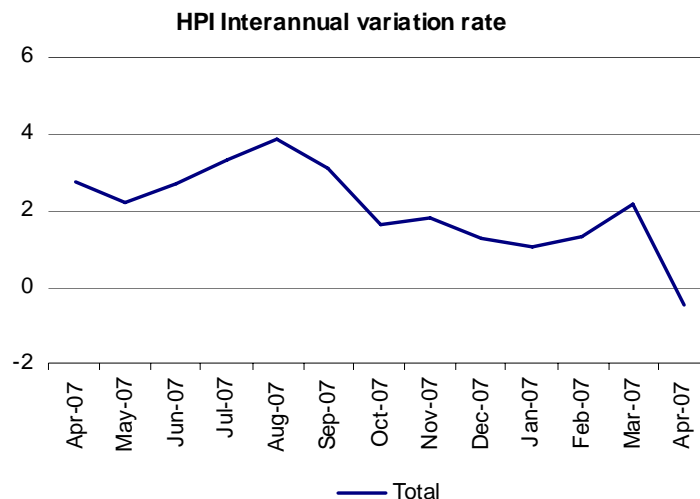
On analysing **March and April together**, Canarias maintained the highest occupancy rate by bedplace, 69.5%, followed by Illes Balears and Comunidad de Madrid, where 58.2% and 54.6% of the available bedplaces were filled, respectively.

The **holiday areas** with the highest occupancy and overnight stay rates appeared on islands and coasts. The island of Tenerife obtained the highest occupancy rate by bedplaces (72.4%), and the coast of Barcelona the highest weekend occupancy rate by bedplaces (74.9%). In the island of Mallorca that the highest number of overnight stays was recorded in April, with over 2.2 million overnight stays.

The **tourist sites** with the highest number of overnight stays were Madrid, Barcelona and Benidorm. Puerto de la Cruz had the highest occupancy rate by bedplaces (77.9%) and had the highest weekend occupancy rate (82.5%).

Hotel prices decrease 0.5% in the interannual rate in April

The interannual decrease of the HPI stood at 0.5% in April, at a rate 2.7 points lower than the previous month, and 3.2 points below the interannual rate recorded one year ago.



Unequal behaviour of prices in the Autonomous Communities

The four Communities (Andalucía, Cataluña, Canarias and Comunidad de Madrid) which accounted for 64.7% of the total weight of the Hotel Price Index in the month of April, recorded different interannual rates.

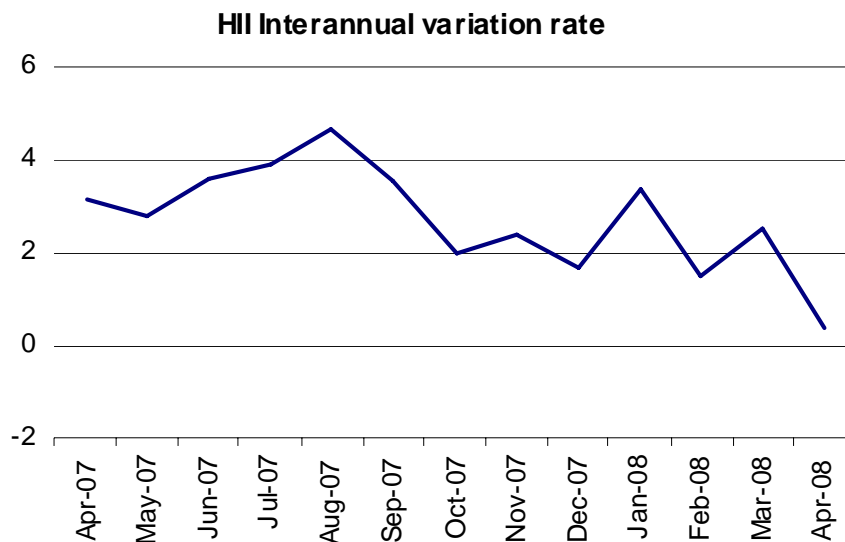
Andalucía, which carried the largest load in the weight structure this month (19.6%), showed an interannual rate of -2.6%, that is, 4.6 points lower than the rate estimated in March. Hotel prices experienced an increase of 1.2% in Cataluña, half that recorded for the previous

month. Conversely, Canarias recorded an interannual rate of -1.7%, that is, 3.5 points lower than last month. In Comunidad de Madrid the interannual rate was 2.1%, which implied a 0.1 point increase as compared with March.

The interannual rate of the HII increases 0.3% in April

The Hotel Income Index (HII), which unlike the HPI, also considers the variation in the tariff structure, reflected an interannual rate of income per occupied room of 0.3% in April, 2.9 points lower than the rate recorded one year ago.

The five most important Communities in this indicator, during the month of April, showed unequal behaviour in hotel income, as compared with April 2007: Illes Balears (2.2%), Cataluña (1.7%), Andalucía (-1.1%), Comunitat Valenciana (-1.3%) and Canarias (-2.1%).



Methodological note 2008

Hotel Price Index - Hotel Income Index

As of the year 2000, the INE publishes the Hotel Price Index (HPI) and the Hotel Income Index (HII), compiled with the information that hotel businesspersons include in a specific section of the Hotel Occupancy Survey questionnaire.

This part of the questionnaire has not been modified since it was incorporated in said year 2000. Nevertheless, the changes that have taken place in the sector over these past eight years have encouraged the introduction of certain modifications in the said section of the questionnaire. With these changes, we hope, on the one hand, **to collect the new distribution channels favoured by generalised Internet use**, and on the other hand, **to adapt the questionnaire to the terms and concepts that are most frequently used within the sector**, as well as the data available in the business management systems themselves.

This improvement will make it possible, **beginning in the year 2009, for the INE to disseminate the whole of the new variables demanded by the sector, these variables being considered ideal for measuring profitability**: the ADR (Average Daily Rate) and the RevPar (Average income per available room).

Throughout the year 2008, the HPI and the HII will continue to be disseminated, on a national level and by Autonomous Community. However, due to the aforementioned updating of the questionnaires, we will not provide the information on prices and income broken down by tariff and by establishment category, granted that in the current format, information is collected referring to the type of client rather than to the tariffs applied. Thus, for example, the "weekend" and "normal" tariffs will disappear, to form a joint "individuals" grouping; conversely, in the 2008 questionnaire, information will be collected on the different types of commercialisation, such as "direct online hiring", which was not previously requested.

Beginning in the year 2009, linked series will be offered on the different establishment categories, once sufficient information is available referring to the whole of the year 2008, allowing us to carry out said links with the utmost quality required.

For further information see INEbase-www.ine.es/en/welcome_en.htm All press releases at: www.ine.es/en/prensa/prensa_en.htm

Press office: Telephone: 91 583 93 63 / 94 08 – Fax: 91 583 90 87 - gprensa@ine.es

Information area: Telephone: 91 583 91 00 – Fax: 91 583 91 58 – www.ine.es/infoine

Tourist Accommodation Occupancy Survey (Hotels and similar establishments)

April 2008

Provisional data

1. Travellers, overnight stays and average stay by categories of establishment

Category	Number of travellers			Number of overnight stays			Average stay
	Total	Residents in Spain	Residents abroad	Total	Residents in Spain	Residents abroad	
TOTAL	6,622,204	3,734,496	2,887,708	19,198,607	8,431,188	10,767,418	2.90
HOTELS: Golden stars							
Five	345,027	164,833	180,194	938,995	300,999	637,996	2.72
Four	2,776,735	1,459,953	1,316,782	8,274,595	2,931,143	5,343,452	2.98
Three	2,016,712	1,122,861	893,851	6,439,398	2,959,701	3,479,697	3.19
Two	554,093	377,224	176,869	1,376,063	871,371	504,692	2.48
One	211,880	141,903	69,977	488,305	300,089	188,215	2.30
INNS: Silver stars							
Two and three	389,162	266,271	122,891	847,733	559,025	288,708	2.18
One	328,594	201,450	127,144	833,517	508,860	324,657	2.54
Interannual rate	-10.44	-16.10	-1.90	-11.49	-21.03	-2.23	-1.17
Cumulative interannual rate	0.90	-0.66	3.42	1.24	-0.80	3.07	0.33

2. Open establishments, capacity, occupancy and employed personnel by categories of establishment

Category	Estimated open establishments	Estimated bedplaces	Level of occupancy			Employed personnel
			Per bedplaces	Per bedplaces at weekend	Per rooms	
TOTAL	14,654	1,291,252	49.21	53.64	54.70	190,163
HOTELS: Golden stars						
Five	204	66,759	46.63	53.91	54.36	21,972
Four	1,599	491,736	55.63	61.06	63.55	83,319
Three	2,283	387,454	54.97	58.41	58.69	52,524
Two	1,853	114,101	40.01	45.19	45.74	12,018
One	1,193	50,618	32.02	35.60	37.55	4,829
INNS: Silver stars						
Two and three	2,966	89,753	31.34	34.85	36.59	7,931
One	4,555	90,830	30.50	32.00	36.25	7,570
Interannual rate	2.04	0.72	-11.54	-15.36	-9.80	-1.34

3. Travellers, overnight stays, occupancy, average stay and employed personnel

Results by areas and tourist sites

	Travellers		Overnight stays		Level of occupancy			Average stay	Employed personnel
	Residents in Spain	Residents abroad	Residents in Spain	Residents abroad	Per bedplac	Per bedplaces	Per rooms at weekend		
Tourist areas with a greater level of occupancy per month									
Isla de Tenerife	94,102	184,151	427,965	1,327,700	72.39	74.01	77.35	6.31	14,635
Isla de Gran Canaria	59,416	121,686	173,579	870,767	67.79	69.96	75.93	5.77	9,113
Costa de Barcelona	146,338	341,758	241,849	766,672	66.27	74.86	78.43	2.07	9,808
Isla de Fuerteventura	7,710	61,538	20,489	521,706	65.38	59.85	69.05	7.83	4,724
Costa del Maresme	27,711	48,441	110,900	161,305	63.99	59.59	60.41	3.57	1,332
Isla de Lanzarote	27,069	59,183	85,313	378,754	61.19	57.28	63.82	5.38	4,668
Isla de La Gomera	2,012	4,639	3,415	27,209	60.61	56.90	68.85	4.60	416
Isla de Mallorca	94,867	315,068	469,383	1,765,642	59.23	59.59	61.22	5.45	16,651

Tourist areas with a greater number of overnight stays per month *

Costa del Sol	159,877	215,444	413,001	861,977	52.66	58.49	58.39	3.40	12,813
Costa Blanca	149,160	113,235	523,373	572,672	58.69	63.77	61.92	4.18	8,700
Costa Brava	88,008	144,360	284,290	525,163	47.70	49.86	47.65	3.48	6,878
Costa Daurada	92,888	62,867	255,459	200,924	37.13	44.43	43.43	2.93	4,471
Costa de la Luz de Cádiz	108,353	53,524	196,973	209,306	36.10	44.66	43.85	2.51	5,023
Costa de Almería	68,011	22,766	218,727	111,869	41.57	46.41	52.38	3.64	2,425
Costa de la Luz de Huelva	53,263	20,834	130,529	95,019	37.81	40.73	39.32	3.04	1,831
Costa del Azahar	45,757	14,852	133,704	46,676	38.14	43.85	45.97	2.98	1,788

Tourist sites with a greater level of occupancy per month

Puerto de La Cruz	31,265	19,068	193,134	201,445	77.91	82.51	81.07	7.84	3,057
Arona	8,773	46,012	34,900	326,829	76.44	74.64	79.32	6.60	2,523
Adeje	21,943	87,210	106,315	671,259	74.81	74.88	79.23	7.12	6,590
San Bartolomé de Tirajana	27,804	84,007	99,748	640,068	72.88	75.30	80.70	6.62	6,319
Benidorm	66,767	67,594	352,505	437,159	72.39	78.55	74.38	5.88	5,235
Sevilla	96,110	83,211	183,128	179,252	69.94	76.67	77.92	2.02	2,864
Lloret de Mar	34,146	77,195	174,081	356,472	69.43	68.89	68.41	4.77	2,549
Pájara	1,903	43,361	6,826	319,754	67.65	67.64	73.09	7.21	3,067
Calviá	25,625	70,295	193,147	448,599	67.14	68.30	69.59	6.69	4,106
Córdoba	37,368	31,415	63,261	46,401	67.06	77.42	71.23	1.59	857

Tourist sites with a greater number of overnight stays per month *

Madrid	340,410	305,380	576,461	681,466	60.43	65.92	71.42	1.95	12,287
Barcelona	141,673	342,293	234,062	768,658	66.78	75.43	79.13	2.07	9,718
Palma de Mallorca	40,198	98,605	132,428	493,225	65.16	65.23	67.65	4.51	4,906
Torremolinos	41,790	60,843	130,711	240,443	61.38	64.69	65.52	3.62	2,488
Valencia	80,308	61,532	135,508	134,447	54.03	66.54	63.60	1.90	2,892
Salou	35,798	32,590	133,999	114,058	44.30	52.22	49.14	3.63	1,701
Granada	61,415	78,473	108,635	138,814	67.01	75.89	68.19	1.77	1,864
Benalmádena	17,456	30,780	56,671	175,043	55.62	61.10	63.04	4.80	1,530
Mogán	4,822	28,405	11,917	194,897	62.77	62.18	68.45	6.22	1,794
Roquetas de Mar	20,136	11,705	118,526	83,017	50.04	51.03	61.23	6.33	1,109

* Not taken into account those included in the preceding table because they are in the bigger level of occupancy tables too.

4. Travellers, overnight stays, average stay.

Results by Autonomous Communities and provinces

Provinces	Number of tr			Overnight stays			Average stay
	Total	Residents in Spain	Residents abroad	Total	Residents in Spain	Residents abroad	
TOTAL	6,622,204	3,734,496	2,887,708	19,198,607	8,431,188	10,767,418	2.90
Andalucía	1,386,605	786,963	599,642	3,530,516	1,685,745	1,844,771	2.55
Almería	96,595	72,637	23,959	339,070	225,185	113,885	3.51
Cádiz	200,672	130,446	70,226	474,603	234,437	240,166	2.37
Córdoba	89,472	53,262	36,210	144,103	89,448	54,655	1.61
Granada	205,095	109,360	95,735	412,773	215,019	197,754	2.01
Huelva	94,338	69,859	24,478	259,099	157,641	101,458	2.75
Jáen	49,709	42,638	7,071	84,157	74,218	9,939	1.69
Málaga	414,492	179,549	234,942	1,351,575	446,782	904,793	3.26
Sevilla	236,233	129,213	107,020	465,135	243,015	222,120	1.97
Aragón	172,227	143,353	28,874	351,167	289,099	62,068	2.04
Huesca	38,425	31,483	6,942	80,648	66,706	13,941	2.10
Teruel	23,777	21,857	1,920	42,155	38,053	4,101	1.77
Zaragoza	110,025	90,014	20,011	228,365	184,339	44,026	2.08
Asturias (Principado de)	104,305	92,883	11,422	206,246	183,837	22,409	1.98
Balears (Illes)	456,197	132,179	324,019	2,411,056	615,195	1,795,861	5.29
Canarias	633,701	196,432	437,269	3,904,387	727,225	3,177,162	6.16
Palmas (Las)	336,603	94,196	242,407	2,050,608	279,381	1,771,227	6.09
Santa Cruz de Tenerife	297,098	102,236	194,862	1,853,780	447,845	1,405,935	6.24
Cantabria	74,616	59,537	15,079	158,956	126,537	32,419	2.13
Castilla y León	343,410	274,229	69,181	586,184	476,025	110,159	1.71
Ávila	23,034	19,009	4,024	38,485	31,942	6,543	1.67
Burgos	58,855	40,687	18,168	100,603	73,259	27,344	1.71
León	58,123	46,586	11,537	93,003	77,381	15,621	1.60
Palencia	16,904	14,222	2,682	27,559	23,040	4,519	1.63
Salamanca	70,947	53,521	17,426	135,391	107,083	28,308	1.91
Segovia	31,983	26,978	5,006	55,022	46,087	8,935	1.72
Soria	13,403	12,268	1,135	25,867	23,541	2,325	1.93
Valladolid	52,630	45,665	6,964	82,747	69,917	12,830	1.57
Zamora	17,532	15,292	2,241	27,506	23,773	3,733	1.57
Castilla-La Mancha	177,734	148,120	29,614	317,643	266,017	51,627	1.79
Albacete	27,591	25,529	2,061	64,479	58,783	5,696	2.34
Ciudad Real	41,535	36,307	5,228	70,060	61,721	8,338	1.69
Cuenca	27,457	24,598	2,860	47,899	42,515	5,384	1.74
Guadalajara	24,585	21,205	3,379	42,198	36,708	5,490	1.72
Toledo	56,566	40,480	16,086	93,007	66,290	26,718	1.64
Cataluña	1,122,756	477,592	645,164	2,887,599	1,118,155	1,769,444	2.57
Barcelona	678,982	248,564	430,418	1,517,754	489,811	1,027,944	2.24
Girona	243,697	98,869	144,828	831,644	305,285	526,360	3.41
Lleida	44,322	37,271	7,051	81,817	67,600	14,217	1.85
Tarragona	155,755	92,888	62,867	456,383	255,459	200,924	2.93
Comunitat Valenciana	591,040	376,928	214,112	1,849,165	1,029,646	819,519	3.13
Alicante	276,434	160,693	115,741	1,121,674	541,423	580,251	4.06
Castellón	71,340	55,551	15,789	208,487	159,956	48,531	2.92
Valencia	243,266	160,684	82,582	519,004	328,267	190,737	2.13
Extremadura	99,813	84,179	15,634	181,341	153,089	28,253	1.82
Badajoz	47,589	39,127	8,462	83,523	67,507	16,016	1.76
Cáceres	52,224	45,052	7,172	97,818	85,582	12,237	1.87
Galicia	262,027	206,415	55,612	543,583	432,461	111,122	2.07
Coruña (A)	121,020	89,070	31,950	252,804	188,515	64,289	2.09
Lugo	34,708	28,738	5,970	62,178	52,184	9,994	1.79
Ourense	27,203	24,726	2,477	52,250	45,419	6,831	1.92
Pontevedra	79,096	63,881	15,216	176,351	146,343	30,008	2.23
Madrid (Comunidad de)	814,905	470,244	344,661	1,524,721	772,844	751,877	1.87
Murcia (Región de)	101,063	82,245	18,818	251,885	202,631	49,254	2.49
Navarra (Comunidad Foral de)	63,136	48,312	14,824	112,139	87,103	25,035	1.78
País Vasco	168,188	112,905	55,284	292,050	190,698	101,352	1.74
Álava	22,571	17,510	5,060	37,102	29,235	7,867	1.64
Guipúzcoa	67,455	43,818	23,637	122,714	78,796	43,917	1.82
Vizcaya	78,162	51,576	26,587	132,235	82,667	49,568	1.69
Rioja (La)	41,634	35,053	6,581	69,171	57,227	11,945	1.66
Ceuta	5,181	4,122	1,060	11,389	9,836	1,553	2.20
Melilla	3,663	2,806	857	9,408	7,819	1,588	2.57

5. Establishment, capacity, occupancy and employed personnel

Results by Autonomous Communities and provinces

Provinces	Estimated open establishments	Estimated bedplaces	Level of occupancy			Employed personnel
			Per bedplaces	Per bedplaces at weekends	Per rooms	
TOTAL	14,654	1,291,252	49.21	53.64	54.70	190,163
Andalucía	2,463	251,938	46.27	52.86	52.16	36,017
Almería	205	28,148	40.09	44.51	49.66	3,053
Cádiz	449	43,675	35.50	43.79	42.87	6,200
Córdoba	188	9,217	51.72	60.69	56.98	1,356
Granada	391	26,808	50.69	61.45	51.74	3,660
Huelva	165	23,434	36.70	39.24	39.04	2,214
Jaén	190	8,441	33.05	44.69	37.41	1,299
Málaga	564	87,313	51.24	57.15	56.86	14,276
Sevilla	311	24,901	61.45	66.94	68.23	3,959
Aragón	739	33,340	34.99	39.71	42.57	4,714
Huesca	296	12,387	21.63	26.05	24.91	1,356
Teruel	196	6,620	21.17	32.33	25.63	792
Zaragoza	247	14,333	52.93	54.77	63.87	2,566
Asturias (Principado de)	677	25,009	27.41	32.06	31.86	3,094
Balears (Illes)	596	137,089	58.36	59.01	60.79	17,948
Canarias	489	190,099	67.88	67.70	73.28	34,259
Palmas (Las)	225	103,556	65.55	64.23	71.28	18,506
Santa Cruz de Tenerife	264	86,542	70.66	71.81	75.62	15,753
Cantabria	357	17,188	30.77	37.06	33.33	2,435
Castilla y León	1,464	58,918	33.06	42.12	38.69	8,141
Ávila	123	5,118	24.96	40.26	31.75	643
Burgos	227	8,633	38.74	40.62	42.94	1,198
León	300	10,728	28.83	33.03	34.69	1,264
Palencia	111	3,712	24.68	27.63	30.55	447
Salamanca	231	10,679	42.05	58.27	45.38	1,482
Segovia	126	5,409	33.83	47.84	38.84	848
Soria	114	3,700	23.21	32.54	28.36	482
Valladolid	141	7,623	36.09	45.81	46.58	1,228
Zamora	92	3,316	27.57	35.45	32.59	549
Castilla-La Mancha	804	32,164	32.81	38.55	38.89	3,924
Albacete	130	5,531	38.76	40.76	49.48	633
Ciudad Real	190	7,596	30.64	33.26	37.40	963
Cuenca	155	5,251	30.36	40.26	33.64	575
Guadalajara	144	4,959	28.26	30.22	33.96	491
Toledo	185	8,827	34.96	45.28	39.46	1,261
Cataluña	1,970	199,101	47.80	52.45	54.03	27,664
Barcelona	858	84,811	59.20	63.91	68.84	14,205
Girona	563	59,540	45.60	47.97	45.46	7,546
Lleida	295	14,136	19.27	25.37	23.70	1,441
Tarragona	255	40,614	37.13	44.43	43.43	4,471
Comunitat Valenciana	1,032	119,332	51.34	56.75	56.17	16,694
Alicante	466	65,526	56.67	61.45	59.89	9,130
Castellón	192	18,522	37.25	42.71	45.06	2,172
Valencia	374	35,285	48.83	55.43	54.74	5,392
Extremadura	377	16,895	35.65	44.51	40.40	2,550
Badajoz	160	7,871	35.21	44.04	41.20	1,226
Cáceres	216	9,024	36.02	44.90	39.68	1,324
Galicia	1,466	59,648	30.31	34.19	37.41	7,263
Coruña (A)	610	23,800	35.33	37.67	43.74	2,672
Lugo	286	8,760	23.61	24.71	28.64	955
Ourense	179	6,111	28.36	31.72	36.03	723
Pontevedra	391	20,977	27.97	34.91	34.11	2,914
Madrid (Comunidad de)	1,187	91,087	55.55	61.02	66.71	15,335
Murcia (Región de)	198	18,588	45.05	53.91	49.57	2,943
Navarra (Comunidad Foral de)	249	10,038	37.15	39.98	47.54	1,491
País Vasco	425	23,096	42.01	49.94	53.20	4,329
Álava	73	3,449	35.81	35.01	47.96	571
Guipúzcoa	203	9,197	44.25	54.80	51.92	1,684
Vizcaya	149	10,450	42.09	50.54	56.12	2,074
Rioja (La)	137	6,042	38.09	50.56	45.39	1,027
Ceuta	13	833	45.22	55.53	55.23	164
Melilla	11	848	36.90	42.96	55.94	171

6. Percentage distribution of Spanish travellers in each province by Autonomous Community of origin

Results by provinces

(Continued)

Provincias	Total	Andalucía	Aragón	Asturias (P. de)	Balears (Illes)	Canarias	Cantabria	Castilla y León	Castilla-La Mancha	Cataluña
TOTAL	100	18.20	2.80	2.51	2.01	2.59	1.46	5.12	3.66	15.54
Álava	100	7.77	3.48	3.26	0.90	0.39	2.20	7.02	1.39	14.73
Albacete	100	7.77	1.27	0.93	1.22	0.72	0.55	3.07	21.16	6.95
Alicante	100	7.46	2.46	1.53	1.09	0.75	0.59	2.60	3.90	9.53
Almería	100	45.93	2.48	0.35	0.77	0.39	0.48	0.87	2.69	7.48
Asturias	100	4.70	1.68	17.47	0.72	1.30	4.65	11.69	2.17	5.60
Ávila	100	10.71	3.45	2.74	0.83	1.23	1.22	17.59	4.94	3.26
Badajoz	100	28.90	0.50	2.44	0.73	1.33	0.92	5.53	5.11	5.05
Balears (Illes)	100	15.58	1.83	0.86	21.42	1.09	0.34	1.95	3.03	23.36
Barcelona	100	7.18	2.89	1.20	2.94	1.90	1.25	2.34	2.37	40.32
Burgos	100	4.94	2.15	4.18	0.47	0.46	3.11	20.00	3.33	8.65
Cáceres	100	15.57	1.01	1.47	0.89	0.71	2.49	6.27	4.91	7.96
Cádiz	100	59.98	1.22	1.13	0.76	1.07	0.44	2.58	3.24	4.97
Cantabria	100	3.50	2.27	8.53	0.41	0.99	9.52	13.12	4.42	5.34
Castellón	100	5.00	3.38	0.56	0.62	0.24	0.39	1.57	3.66	18.49
Ciudad Real	100	15.96	1.18	1.94	0.49	0.96	2.00	3.32	19.36	5.65
Córdoba	100	46.75	1.27	0.86	1.28	1.18	0.55	3.62	3.52	6.66
Coruña (A)	100	4.38	1.29	4.76	0.98	1.21	1.08	6.04	1.85	8.33
Cuenca	100	6.48	2.01	1.46	0.48	1.02	1.05	3.57	17.11	7.93
Girona	100	5.32	1.54	0.54	0.49	0.36	1.13	2.21	1.33	68.62
Granada	100	49.16	1.10	1.40	0.87	0.61	0.34	1.80	2.46	6.28
Guadalajara	100	8.90	2.74	1.24	0.25	0.87	0.60	5.27	24.48	9.82
Guipúzcoa	100	6.54	3.91	2.13	0.68	0.54	2.01	7.30	1.08	18.36
Huelva	100	63.36	0.58	0.60	0.73	1.56	1.82	1.93	1.38	3.34
Huesca	100	3.40	27.01	1.17	0.32	0.43	1.40	2.62	1.62	22.64
Jaén	100	51.91	0.83	0.56	0.51	0.40	0.53	2.46	4.31	5.96
León	100	2.57	1.28	11.22	1.05	0.88	2.84	21.82	1.99	6.98
Lleida	100	3.75	3.20	0.55	0.73	0.38	0.69	1.53	1.42	68.22
Lugo	100	3.41	0.62	9.51	0.30	0.29	2.23	5.06	2.63	4.55
Madrid	100	15.69	3.09	3.12	2.06	3.41	2.53	4.80	3.53	13.57
Málaga	100	55.81	0.71	0.62	1.96	1.97	0.29	2.47	2.38	7.24
Murcia	100	12.80	1.55	1.64	1.46	0.87	0.69	3.65	5.83	9.58
Navarra	100	6.39	5.70	2.02	0.72	1.51	2.47	5.14	1.85	15.91
Ourense	100	2.06	0.49	3.82	0.34	0.40	0.24	5.94	2.51	3.59
Palencia	100	3.81	1.20	4.67	2.90	0.87	3.92	18.40	2.15	8.48
Palmas (Las)	100	7.78	0.48	0.90	1.48	28.26	0.38	1.46	0.66	8.86
Pontevedra	100	4.75	1.64	5.71	1.86	1.39	1.02	7.17	3.00	5.96
Rioja (La)	100	3.58	5.68	4.73	1.17	0.85	3.43	6.21	4.18	15.02
Salamanca	100	6.55	2.35	4.40	0.46	1.15	2.18	16.87	4.91	3.93
S. C. Tenerife	100	14.30	1.14	0.60	1.50	22.19	0.83	2.81	1.59	7.56
Segovia	100	5.55	4.70	2.81	0.87	1.00	2.43	14.91	4.73	6.12
Sevilla	100	39.60	1.47	0.97	0.90	1.58	0.75	2.74	2.60	8.02
Soria	100	2.46	7.20	4.01	0.45	0.54	3.22	17.90	5.02	9.97
Tarragona	100	5.20	6.71	0.65	1.16	0.43	1.07	1.63	2.21	58.19
Teruel	100	3.96	21.51	0.70	0.40	0.22	0.48	3.40	3.03	18.13
Toledo	100	11.30	2.27	1.49	0.63	0.60	0.71	8.45	19.23	4.42
Valencia	100	8.60	2.33	0.87	1.82	0.60	0.52	5.16	5.31	13.98
Valladolid	100	7.47	1.41	3.67	0.52	1.22	1.72	25.26	2.80	7.08
Vizcaya	100	5.36	2.64	2.91	1.17	1.19	2.04	6.38	1.72	15.70
Zamora	100	3.40	1.94	5.56	0.21	0.44	1.63	20.63	2.33	7.31
Zaragoza	100	6.52	14.04	3.05	1.14	0.92	1.32	5.28	3.22	19.46
Ceuta	100	44.31	0.33	1.24	4.24	1.24	1.34	3.64	3.10	2.85
Melilla	100	68.51	0.81	0.58	0.69	0.73	0.38	0.27	2.59	4.86

6. Percentage distribution of Spanish travellers in each province by Autonomous Community of origin

Results by provinces

(Conclusion)

Provincias	Comunitat Valenciana	Extremadura	Galicia	Madrid (C. de)	Murcia (Región de)	Navarra (C. Foral de)	País Vasco	Rioja (La)	Ceuta y Melilla
TOTAL	8.77	1.88	5.58	20.19	2.26	1.20	4.92	0.75	0.55
Álava	3.54	0.85	2.87	22.28	0.43	3.74	24.08	1.07	-
Albacete	20.09	1.79	1.79	22.58	6.06	0.74	3.01	0.29	0.02
Alicante	37.04	0.91	2.91	20.15	3.48	0.85	3.82	0.84	0.11
Almería	9.42	0.67	0.83	15.53	9.85	0.54	1.04	0.12	0.55
Asturias	2.65	1.57	14.03	19.68	0.93	1.66	8.61	0.75	0.12
Ávila	3.30	4.58	6.74	34.55	0.67	0.39	2.84	0.73	0.22
Badajoz	3.15	15.60	3.38	23.45	1.25	0.47	1.76	0.34	0.10
Balears (Illes)	7.24	2.70	2.16	15.69	0.68	0.45	1.32	0.28	0.03
Barcelona	6.80	0.79	2.20	17.81	1.35	1.24	4.26	0.64	2.52
Burgos	3.93	0.80	7.74	24.49	1.75	1.42	11.27	1.29	0.04
Cáceres	4.47	13.66	2.68	31.97	0.66	0.79	3.60	0.47	0.42
Cádiz	2.28	1.74	1.46	14.03	0.77	0.61	2.34	0.22	1.16
Cantabria	3.30	1.36	5.44	21.15	0.43	2.08	15.88	2.20	0.06
Castellón	36.26	0.53	1.30	19.57	3.37	0.77	3.97	0.28	0.05
Ciudad Real	10.54	3.03	1.62	26.61	2.35	1.19	3.10	0.58	0.12
Córdoba	5.10	2.37	1.18	20.54	1.23	0.96	1.72	0.73	0.47
Coruña (A)	3.07	0.55	43.26	16.98	0.60	0.58	4.53	0.44	0.06
Cuenca	15.36	1.90	2.44	32.47	2.70	1.14	2.10	0.70	0.08
Girona	5.08	1.20	2.10	6.26	0.21	0.40	2.80	0.29	0.11
Granada	7.10	0.86	1.37	17.35	5.17	0.57	2.22	0.44	0.89
Guadalajara	5.24	4.47	2.94	27.63	1.73	0.95	2.05	0.64	0.17
Guipúzcoa	4.55	0.34	3.94	16.47	0.55	4.55	25.68	1.34	0.04
Huelva	3.82	5.34	2.04	9.54	0.87	0.19	2.18	0.09	0.64
Huesca	4.94	2.23	0.99	18.13	0.43	2.25	9.03	1.30	0.08
Jaén	8.45	1.33	1.54	16.37	2.03	0.42	1.82	0.42	0.16
León	2.42	0.91	17.08	20.25	0.92	0.98	5.90	0.89	0.02
Lleida	3.70	0.58	1.31	8.45	0.86	0.64	3.18	0.27	0.52
Lugo	2.29	0.53	49.93	11.47	0.74	1.05	4.23	1.10	0.06
Madrid	9.49	2.79	4.93	18.83	3.02	1.86	5.53	1.33	0.40
Málaga	3.04	1.49	0.98	14.78	1.96	0.30	2.26	0.20	1.53
Murcia	18.82	1.34	2.10	19.09	17.03	0.47	1.83	0.52	0.73
Navarra	5.28	1.69	4.45	20.46	1.21	8.81	14.45	1.90	0.02
Ourense	1.39	0.72	63.50	12.34	0.41	0.04	1.87	0.35	-
Palencia	8.56	0.97	9.18	22.28	1.00	1.68	8.47	1.40	0.07
Palmas (Las)	1.64	0.17	1.31	43.06	0.33	0.50	2.71	0.04	0.01
Pontevedra	3.74	1.41	37.85	16.73	0.78	1.10	4.06	1.21	0.62
Rioja (La)	4.88	1.55	3.32	18.68	0.93	3.28	18.61	3.90	0.02
Salamanca	4.60	4.38	4.85	32.48	0.85	1.69	6.94	1.26	0.15
S. C. Tenerife	2.23	0.36	2.14	38.21	0.33	0.54	2.71	0.85	0.10
Segovia	3.88	1.78	3.18	39.78	1.37	1.02	5.20	0.63	0.04
Sevilla	4.88	2.37	1.48	26.46	1.90	0.86	2.21	0.55	0.66
Soria	3.04	0.58	1.72	33.18	2.11	1.42	5.84	1.27	0.07
Tarragona	7.06	0.14	0.91	5.85	1.00	1.60	5.54	0.39	0.27
Teruel	24.73	0.34	0.92	16.43	1.21	1.24	2.67	0.59	0.02
Toledo	9.06	3.57	2.21	27.89	2.47	0.75	4.03	0.40	0.51
Valencia	25.91	0.90	2.03	24.00	3.76	0.70	2.34	0.45	0.71
Valladolid	3.86	1.33	7.26	28.78	0.96	1.11	4.64	0.76	0.16
Vizcaya	3.17	0.78	4.00	22.39	0.88	2.26	26.04	1.28	0.08
Zamora	2.86	1.18	14.33	29.09	2.03	0.84	5.21	0.72	0.29
Zaragoza	7.79	1.13	4.08	21.26	1.43	2.23	5.41	1.52	0.19
Ceuta	1.41	1.61	0.83	22.25	0.41	-	1.18	0.17	9.85
Melilla	1.55	0.58	0.61	9.89	1.15	0.23	0.46	-	6.11

7. Percentage distribution of overnight stays in each province by Autonomous Community of origin

Results by provinces

(Continued)

Provinces	Total	Andalucía	Aragón	Asturias (P. de)	Balears (Illes)	Canarias	Cantabria	Castilla y León	Castilla-La Mancha	Cataluña
TOTAL	100	18.08	2.78	2.54	2.37	2.67	1.39	4.92	3.91	15.76
Álava	100	9.51	3.74	3.09	0.69	0.30	3.35	8.20	1.42	13.07
Albacete	100	8.04	1.10	0.65	1.93	0.51	0.40	2.51	22.73	6.06
Alicante	100	8.25	3.40	2.56	1.51	0.87	0.72	2.82	2.88	9.88
Almería	100	41.91	2.08	0.72	1.06	1.27	0.85	1.51	3.61	12.83
Asturias	100	7.02	1.79	14.28	0.96	1.54	4.06	10.88	2.11	5.73
Ávila	100	16.73	2.69	2.70	0.73	1.64	1.51	19.45	4.42	3.55
Badajoz	100	28.45	0.53	3.63	0.60	2.69	0.81	4.44	5.01	5.05
Balears (Illes)	100	20.46	1.90	1.50	14.29	0.33	1.17	2.14	4.28	18.63
Barcelona	100	8.83	3.05	1.74	3.16	2.46	1.58	2.41	2.46	38.46
Burgos	100	5.03	1.90	4.67	0.42	0.49	2.53	24.77	4.05	8.73
Cáceres	100	17.89	0.83	1.91	0.93	0.65	2.99	5.66	4.12	7.66
Cádiz	100	57.71	1.41	1.07	0.74	1.09	0.46	2.69	4.06	4.84
Cantabria	100	4.97	2.18	8.74	0.78	1.32	7.99	12.20	6.62	6.54
Castellón	100	5.05	3.37	0.86	1.58	1.60	0.34	1.78	5.35	16.65
Ciudad Real	100	16.22	1.14	1.85	0.33	0.73	1.77	3.66	21.11	5.67
Córdoba	100	45.09	1.30	1.07	1.02	1.29	0.64	3.72	3.59	7.68
Coruña (A)	100	4.17	1.27	4.93	0.97	1.28	1.04	5.76	1.83	6.93
Cuenca	100	7.35	2.33	1.61	0.38	0.99	0.88	3.27	18.30	8.56
Girona	100	10.64	1.48	0.44	0.25	0.14	0.47	3.34	1.05	57.41
Granada	100	47.23	2.27	2.83	0.84	0.50	0.38	2.04	2.24	6.48
Guadalajara	100	10.84	1.82	2.09	0.17	0.53	1.78	5.20	26.02	9.49
Guipúzcoa	100	8.40	4.16	2.70	0.82	0.56	2.30	6.66	1.02	18.70
Huelva	100	54.57	0.55	0.72	0.51	1.72	0.80	2.02	1.94	4.95
Huesca	100	3.62	28.89	1.39	0.35	0.29	1.37	2.79	1.34	21.78
Jaén	100	51.40	0.70	0.51	1.26	0.53	0.44	2.18	4.01	6.23
León	100	2.70	1.07	10.46	1.08	2.77	3.70	23.23	1.57	7.54
Lleida	100	4.55	2.98	0.57	0.69	0.43	0.50	1.23	2.12	67.18
Lugo	100	3.83	0.67	9.32	0.21	0.30	1.77	4.36	2.74	4.23
Madrid	100	15.45	2.93	3.13	2.11	4.12	2.51	4.89	3.46	13.76
Málaga	100	43.41	0.56	0.70	2.63	3.76	0.26	4.44	3.27	10.50
Murcia	100	12.45	2.05	1.76	2.39	0.81	1.00	4.66	8.48	10.54
Navarra	100	7.75	6.21	1.88	0.83	1.99	2.30	4.58	2.16	15.45
Ourense	100	4.44	0.32	3.75	0.22	0.33	0.11	6.99	1.56	2.38
Palencia	100	6.73	1.20	5.05	3.06	1.01	3.11	20.60	1.99	7.39
Palmas (Las)	100	9.18	0.42	1.18	1.33	19.41	0.99	2.37	0.71	9.56
Pontevedra	100	5.94	2.39	7.02	3.13	1.64	2.08	6.31	6.33	4.56
Rioja (La)	100	3.96	5.80	3.95	1.28	0.93	2.94	7.85	5.39	14.11
Salamanca	100	6.24	2.02	5.97	1.14	1.42	1.90	22.66	4.08	3.48
S. C. Tenerife	100	18.20	1.32	1.48	1.48	11.49	0.97	3.10	2.12	8.49
Segovia	100	6.57	5.36	3.95	0.65	3.30	2.50	15.66	4.13	5.99
Sevilla	100	36.80	1.68	1.08	1.07	1.83	0.90	2.82	2.79	8.73
Soria	100	2.46	5.59	7.44	0.42	0.52	2.25	27.19	4.69	8.79
Tarragona	100	9.94	4.95	1.74	1.05	0.67	1.35	1.62	2.58	52.50
Teruel	100	4.76	21.93	1.05	0.40	0.15	0.55	4.75	3.14	18.40
Toledo	100	11.41	2.32	1.51	0.61	0.69	0.89	7.70	18.03	4.86
Valencia	100	8.36	2.28	1.23	1.38	1.10	0.77	5.71	7.81	13.86
Valladolid	100	8.42	1.81	4.17	0.67	1.14	2.17	22.89	2.78	8.46
Vizcaya	100	5.44	2.82	2.92	1.01	1.30	1.94	6.23	1.86	16.47
Zamora	100	3.44	1.54	4.61	0.27	0.48	1.32	21.79	2.31	9.24
Zaragoza	100	6.62	15.69	2.68	0.98	0.75	1.15	4.75	3.30	18.67
Ceuta	100	55.17	0.38	0.63	2.88	0.97	0.68	2.16	2.46	2.16
Melilla	100	68.68	0.46	0.52	0.30	0.75	0.15	0.38	1.43	4.20

7. Percentage distribution of overnight stays in each province by Autonomous Community of origin

Results by provinces

(Conclusion)

Provincias	Comunitat Valenciana	Extremadura	Galicia	Madrid (C. de)	Murcia (Región de)	Navarra (C. Foral de)	País Vasco	Rioja (La)	Ceuta y Melilla
TOTAL	8.80	1.83	5.82	20.20	1.84	1.24	4.59	0.84	0.42
Álava	3.32	0.62	4.90	21.42	0.65	3.27	21.60	0.86	-
Albacete	18.66	1.16	1.84	25.41	5.38	0.69	2.76	0.17	0.01
Alicante	27.67	1.00	6.22	16.76	2.61	3.49	7.57	1.67	0.10
Almería	8.54	0.60	1.50	15.67	5.25	0.95	1.36	0.06	0.22
Asturias	3.11	2.84	13.15	21.78	1.05	1.51	7.30	0.59	0.31
Ávila	3.02	4.81	5.00	28.87	0.74	0.39	2.99	0.58	0.16
Badajoz	3.13	15.42	3.77	22.33	1.61	0.41	1.66	0.32	0.14
Balears (Illes)	7.76	2.31	3.78	17.59	0.68	0.65	0.76	1.74	0.02
Barcelona	7.24	0.71	3.30	15.52	1.15	1.04	4.17	0.54	2.18
Burgos	4.22	0.69	7.06	22.23	1.14	1.16	9.92	0.98	0.02
Cáceres	4.55	12.45	2.67	31.91	0.59	0.61	3.87	0.36	0.33
Cádiz	2.33	2.00	1.82	14.61	0.67	0.63	2.38	0.20	1.28
Cantabria	2.99	1.68	5.96	21.42	0.45	1.46	12.78	1.82	0.08
Castellón	32.45	1.18	1.28	19.24	2.48	0.69	5.65	0.42	0.03
Ciudad Real	8.56	2.95	1.50	27.78	2.47	1.15	2.36	0.48	0.26
Córdoba	5.25	2.56	1.18	20.54	1.10	0.83	2.09	0.60	0.43
Coruña (A)	3.22	0.76	48.68	13.56	1.00	0.49	3.70	0.37	0.04
Cuenca	15.09	2.58	2.75	28.72	2.99	1.36	2.10	0.63	0.10
Girona	6.27	2.45	3.32	9.15	0.16	0.58	2.65	0.17	0.04
Granada	7.00	0.74	1.46	17.03	4.26	0.59	3.02	0.37	0.71
Guadalajara	4.31	5.93	3.91	23.29	1.90	0.62	1.57	0.41	0.14
Guipúzcoa	4.70	0.31	4.29	16.33	0.47	3.76	22.89	1.90	0.04
Huelva	7.38	3.85	3.47	10.44	0.80	0.13	5.02	0.79	0.34
Huesca	4.50	2.47	2.94	17.04	0.80	1.91	7.49	0.98	0.07
Jaén	10.27	1.17	1.64	15.76	1.77	0.33	1.37	0.33	0.12
León	2.15	0.76	17.08	18.48	0.89	0.83	4.95	0.69	0.03
Lleida	3.96	0.64	1.51	8.14	1.29	0.53	2.65	0.17	0.88
Lugo	1.81	0.54	49.62	14.63	0.84	1.00	3.14	0.92	0.08
Madrid	9.51	2.79	5.45	18.02	2.83	1.75	5.55	1.35	0.40
Málaga	3.20	2.23	1.22	17.19	2.08	0.27	2.74	0.59	0.93
Murcia	15.78	1.59	3.48	19.83	10.81	1.20	1.69	0.88	0.58
Navarra	5.08	1.50	4.47	20.57	1.29	8.72	13.42	1.78	0.02
Ourense	1.07	0.81	57.06	18.53	0.49	0.02	1.69	0.24	-
Palencia	7.04	0.78	8.80	21.08	0.67	1.53	8.75	1.18	0.04
Palmas (Las)	1.77	0.19	1.79	46.72	0.29	0.58	3.46	0.03	0.02
Pontevedra	4.71	1.33	33.73	13.56	1.01	0.81	3.73	1.45	0.29
Rioja (La)	5.08	1.43	3.26	19.60	0.73	3.29	16.71	3.67	0.02
Salamanca	4.41	4.95	4.21	28.17	0.68	1.29	6.33	0.91	0.15
S. C. Tenerife	2.84	0.30	2.69	40.38	0.36	0.62	3.41	0.68	0.07
Segovia	4.17	1.61	4.71	34.02	1.15	0.67	5.01	0.46	0.09
Sevilla	5.29	2.17	1.58	27.01	1.91	0.90	2.47	0.51	0.46
Soria	2.48	0.58	1.48	28.59	1.26	0.89	4.53	0.78	0.07
Tarragona	6.82	0.14	1.01	5.57	0.60	2.15	6.63	0.51	0.17
Teruel	23.51	0.30	1.27	14.57	1.27	1.09	2.40	0.44	0.01
Toledo	11.60	4.76	3.08	24.24	2.92	0.68	3.90	0.45	0.36
Valencia	25.44	0.73	2.25	22.30	2.98	0.60	2.03	0.46	0.70
Valladolid	3.91	1.58	7.23	27.26	0.69	0.98	4.78	0.88	0.19
Vizcaya	3.88	0.94	5.06	22.94	1.20	2.12	22.69	1.10	0.08
Zamora	2.85	1.35	15.65	26.10	2.09	0.96	4.92	0.85	0.21
Zaragoza	7.24	1.36	5.02	22.39	1.45	2.18	4.36	1.27	0.16
Ceuta	1.40	0.89	1.08	19.06	0.25	-	0.68	0.13	9.03
Melilla	1.16	0.47	0.43	13.17	0.68	0.09	0.37	-	6.75

8. Travellers, overnight stays and average stay by country of residence

Results by countries

Countries	Number of travellers		Overnight stays	
	Total	%	Total	%
TOTAL	6,622,204	100.00	19,198,607	100.00
Residents in Spain	3,734,496	56.39	8,431,188	43.92
Residents abroad	2,887,708	43.61	10,767,418	56.08
Total Residents in Spain	2,887,708	100.00	10,767,418	100.00
Total Residents in U.E. (without Spain)	2,262,013	78.33	9,247,330	85.88
- Germany	581,806	20.15	3,300,423	30.65
- Austria	31,048	1.08	129,999	1.21
- Belgium	71,161	2.46	303,138	2.82
- Denmark	28,971	1.00	109,911	1.02
- Finland	25,427	0.88	92,081	0.86
- France	375,513	13.00	963,749	8.95
- Greece	14,423	0.50	37,334	0.35
- Ireland	45,799	1.59	156,422	1.45
- Italy	204,362	7.08	550,044	5.11
- Luxembourg	5,977	0.21	27,629	0.26
- Netherlands	121,813	4.22	433,670	4.03
- Poland	20,513	0.71	59,849	0.56
- Portugal	105,264	3.65	243,907	2.27
- United Kingdom	530,955	18.39	2,471,571	22.95
- Czech Republic	11,240	0.39	45,752	0.42
- Sweden	45,055	1.56	199,833	1.86
- Rest of UE*	42,687	1.48	122,018	1.13
Norway	31,753	1.10	122,027	1.13
Russia	27,358	0.95	99,011	0.92
Switzerland	48,717	1.69	161,204	1.50
Rest of Europe	56,852	1.97	177,667	1.65
Japan	49,561	1.72	79,053	0.73
United States of America	124,882	4.32	267,192	2.48
Rest of America	131,562	4.56	303,385	2.82
African's countries	25,894	0.90	54,007	0.50
Rest of the world	129,116	4.47	256,542	2.38

*Countries included in the Rest of UE: Bulgaria, Cyprus, Slovakia, Slovenia, Estonia, Hungary, Latvia, Lithuania, Malta and Romania

Hotel Price Index (HPI)

April 2008

Provisional data

General Autonomous Communities and national indices

April	Index	Interannual variation rate
TOTAL	113.3	-0.5
Andalucía	113.9	-2.6
Aragón	131.5	2.4
Asturias (Principado de)	110.2	-1.6
Balears (Illes)	107.4	1.3
Canarias	108.8	-1.7
Cantabria	109.3	0.1
Castilla y León	117.1	-0.3
Castilla-La Mancha	126.6	-1.1
Cataluña	119.3	1.2
Comunitat Valenciana	113.2	-2.1
Extremadura	121.7	-0.5
Galicia	114.8	-1.3
Madrid (Comunidad de)	116.6	2.1
Murcia (Región de)	119.5	1.3
Navarra (Comunidad Foral de)	121.8	0.2
País Vasco	109.8	-1.0
Rioja (La)	120.2	-1.1
Ceuta	172.7	18.4
Melilla	114.9	6.7

HPI (ANNEX OF TABLES) - April 2008

23rd May 2008

HOTEL INCOME INDEX (HII)

April 2008

Provisional data

General Autonomous Communities and national indices

	Index	Interannual variation rate
TOTAL	119.7	0.3
Andalucía	117.5	-1.1
Aragón	140.8	2.6
Asturias (Principado de)	113.2	-0.7
Balears (Illes)	117.7	2.2
Canarias	108.5	-2.1
Cantabria	111.5	2.3
Castilla y León	126.7	-0.8
Castilla-La Mancha	134.6	-0.2
Cataluña	124.2	1.7
Comunitat Valenciana	117.6	-1.3
Extremadura	131.3	2.6
Galicia	114.5	-1.7
Madrid (Comunidad de)	128.5	3.0
Murcia (Región de)	115.2	-1.2
Navarra (Comunidad Foral de)	126.3	2.0
País Vasco	106.5	-0.5
Rioja (La)	128.9	2.9
Ceuta	113.7	13.6
Melilla	151.6	0.5