

24 June 2008

**Hotel Tourism Short-Term Trends (HOS/HPI/HII)  
May 2008. Provisional data**

**Overnight stays in hotel establishments increase 6.6% in May as compared with the same month in 2007**

**The interannual rate of hotel prices increases 1.3%**

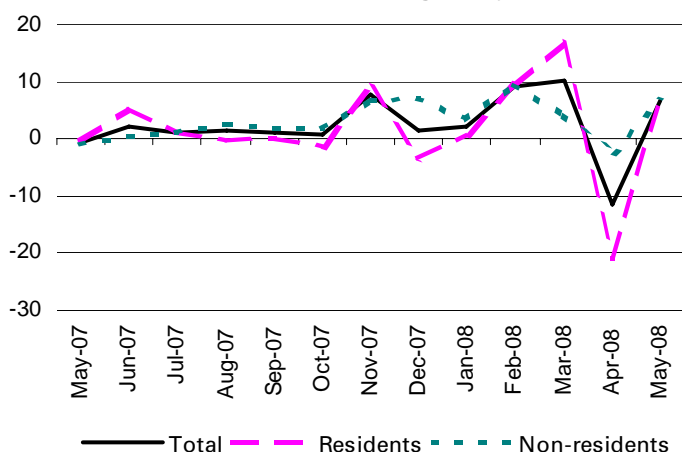
During the month of May, more than 25 million overnight stays were registered in hotel establishments, indicating an increase of 6.6% as compared with the same month in 2007. The increase in overnight stays was recorded both for residents, whose interannual rate stood at 7.1%, and for non-residents, who presented a variation of 6.3%.

**The average stay grew 0.6%**, in interannual terms, standing at 3.1 nights per guest.

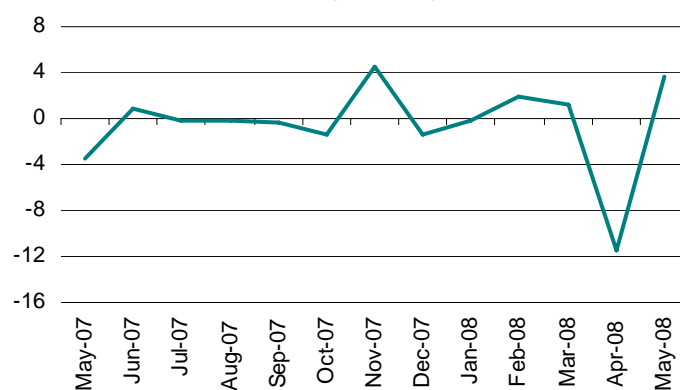
On the other hand, the **Hotel Price Index (HPI) registered a growth of 1.3%** in the month of May, practically one-and-a-half points lower than that recorded the same month in 2007.

**During the month of May, 52.9% of the available bedplaces were filled**, 3.7% more than the same month of the previous year. **The weekend occupancy rate by bedplaces stood at 60.1%**, with an interannual increase of 5.2%.

**Interannual rates of overnight stays in %**



**Interannual occupancy rates by bedplaces in %**

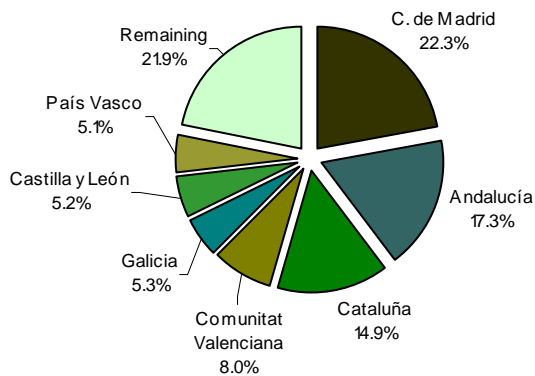


**Overnight stays of German and British citizens increase**

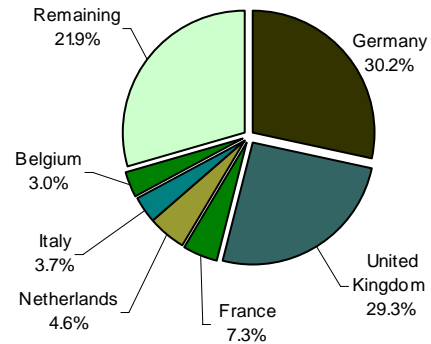
Guests from Germany and the United Kingdom made 9.3 million overnight stays in May, accounting for 59.5% of the total for non-residents. Both the German and the British markets experienced interannual increases in overnight stays, of 9.5% and 0.5%, respectively.

Overnight stays of guests from France, the Netherlands and Italy (the following markets) registered interannual rates of 10.6%, 10.4% and 4.5%, respectively.

**Overnight stays of Spanish guests by Autonomous Community of origin in %**



**Overnight stays of foreign guests by country of origin in %**

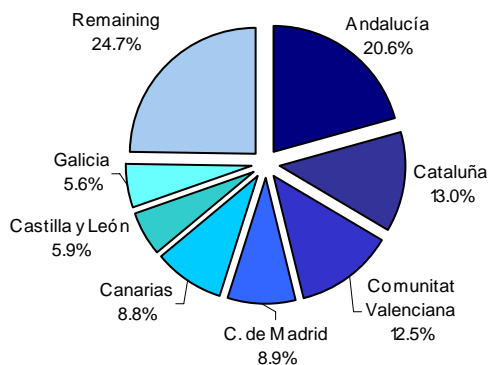


### Illes Balears is the preferred destination for foreign guests

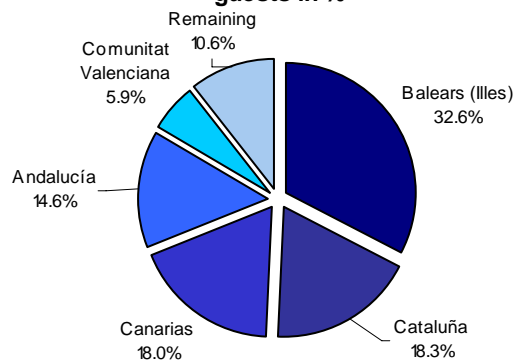
The main destination chosen by non-residents was Illes Balears, the Autonomous Community in which overnight stays by foreign nationals, representing 32.6% of the national total, increased 6.1% as compared with May 2007. It was followed by Cataluña, with an interannual rate of 2.4%, and Canarias, with a rate of 9.0%.

Andalucía, Cataluña and Comunitat Valenciana were the preferred destinations of Spaniards, with interannual rates of overnight stays of 10.7%, 3.1%, and -8.9%, respectively.

**Distribution of overnight stays of Spanish guests in %**



**Distribution of overnight stays of foreign guests in %**



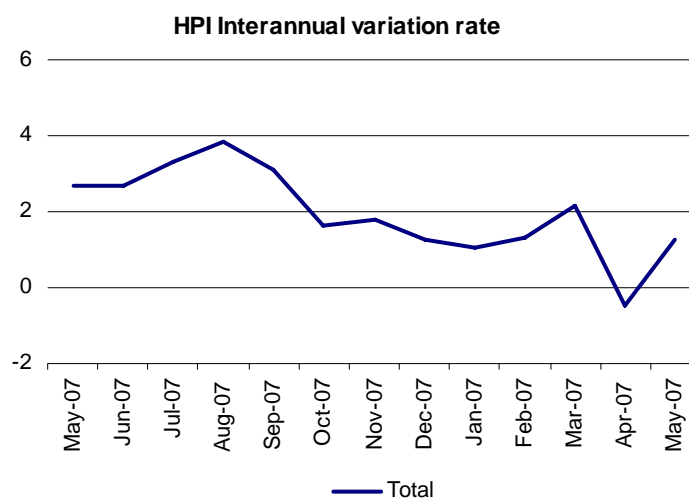
During the month of May, Illes Balears was the Autonomous Community with the highest occupancy rate by bedplaces (60.8%), ahead of Canarias (59.1%) and Comunidad de Madrid (57.3%).

The **tourist areas** with the highest occupancy and overnight stay rates were located on the islands and the coasts. The coast of Barcelona obtained the highest occupancy rate both by bedplaces (68.6%), and by bedplaces at weekends (79.3%). The island of Mallorca registered the highest number of overnight stays in May, more than 4.4 million.

**The tourist sites** with the highest number of overnight stays were Madrid, Barcelona and Calvià. In turn, Benidorm reached the highest occupancy rate by bedplaces (79.3%) and the highest weekend occupancy rate (86.7%), the latter being the same percentage as for Córdoba.

## Hotel prices record an interannual rate of 1.3% in May

The interannual increase in the HPI stood at 1.3% in May, 1.8 points higher than the rate from the previous month, and 1.4 points below the rate registered one year ago.



## Uneven performance of prices in the Autonomous Communities

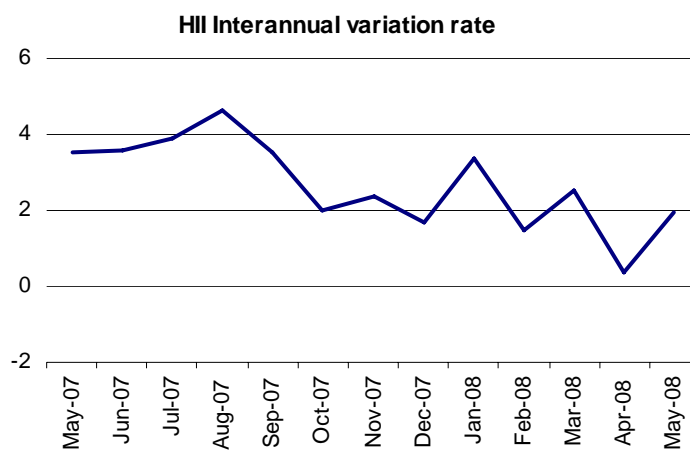
The four Communities (Cataluña, Andalucía, Illes Balears, and Canarias) which accounted for 64.5% of the total weight of the Hotel Price Index in the month of May, recorded different interannual evolution.

Thus, Cataluña, which maintained the greatest load in the weight structure this month (18.3%), showed an interannual rate of 2.2%, that is, one point higher than the rate estimated in April. In Andalucía, hotel prices experienced a 1.3% decrease, as compared with the -2.6% recorded the previous month. Conversely, Illes Balears recorded an interannual rate of 3.2%, that is, 1.9 points higher than the previous month. In Canarias, the interannual rate was 1.5%, that is, 3.2 points higher than in April.

**The HII experiences an interannual increase of 2.0%**

The Hotel Income Index (HII), which unlike the HPI also considers the variation in the rate structure, reflected an interannual rate of income per occupied room of 2.0% in May, one-and-a-half points lower than the rate recorded one year ago.

The five most important Communities in this index in May showed uneven behaviour in hotel income as compared with May 2007: Illes Balears (3.8%), Cataluña (2.7%), Andalucía (-0.4%), and Canarias (0.9%).



## Methodological note 2008

### Hotel Price Index - Hotel Income Index

As of the year 2000, the INE publishes the Hotel Price Index (HPI) and the Hotel Income Index (HII), compiled with the information that hotel businesspersons include in a specific section of the Hotel Occupancy Survey questionnaire.

This part of the questionnaire has not been modified since it was incorporated in said year 2000. Nevertheless, the changes that have taken place in the sector over these past eight years have encouraged the introduction of certain modifications in the said section of the questionnaire. With these changes, we hope, on the one hand, **to collect the new distribution channels favoured by generalised Internet use**, and on the other hand, **to adapt the questionnaire to the terms and concepts that are most frequently used within the sector**, as well as the data available in the business management systems themselves.

This improvement will make it possible, **beginning in the year 2009, for the INE to disseminate the whole of the new variables required by the sector, these variables being considered ideal for measuring profitability**: the ADR (Average Daily Rate) and the RevPar (Average income per available room).

Throughout the year 2008, the HPI and the HII will continue to be disseminated, on a national level and by Autonomous Community. However, due to the aforementioned updating of the questionnaires, we will not provide the information on prices and income broken down by rate and by establishment category, granted that in the current format, information is collected referring to the type of client rather than to the rates applied. Thus, for example, the "weekend" and "normal" rates will disappear, to form a joint "individuals" grouping; conversely, in the 2008 questionnaire, information will be collected on the different types of commercialisation, such as "direct online hiring", which was not previously requested.

Beginning in the year 2009, linked series will be offered on the different establishment categories, once sufficient information is available referring to the whole of the year 2008, allowing us to carry out said links with the utmost quality required.

---

For further information see [INEbase-www.ine.es/en/welcome\\_en.htm](http://INEbase-www.ine.es/en/welcome_en.htm) All press releases at: [www.ine.es/en/prensa/prensa\\_en.htm](http://www.ine.es/en/prensa/prensa_en.htm)

**Press office:** Telephone: 91 583 93 63 / 94 08 – Fax: 91 583 90 87 - [gprensa@ine.es](mailto:gprensa@ine.es)

**Information area:** Telephone: 91 583 91 00 – Fax: 91 583 91 58 – [www.ine.es/infoine](http://www.ine.es/infoine)

---

## Tourist Accommodation Occupancy Survey (Hotels and similar establishments)

May 2008

Provisional data

### 1. Travellers, overnight stays and average stay by categories of establishment

Category	Number of travellers			Number of overnight stays			Average stay
	Total	Residents in Spain	Residents abroad	Total	Residents in Spain	Residents abroad	
<b>TOTAL</b>	8.094.398	4.195.319	3.899.080	25.033.472	9.481.220	15.552.252	3,09
<b>HOTELS: Golden stars</b>							
Five	402.488	185.908	216.581	1.068.125	374.298	693.827	2,65
Four	3.240.586	1.643.981	1.596.605	10.089.982	3.498.109	6.591.873	3,11
Three	2.692.578	1.276.074	1.416.504	9.359.993	3.067.468	6.292.525	3,48
Two	673.409	425.377	248.032	1.825.157	978.597	846.561	2,71
One	240.149	155.782	84.367	584.031	355.913	228.119	2,43
<b>INNS: Silver stars</b>							
Two and three	458.641	290.673	167.969	1.125.339	639.151	486.187	2,45
One	386.546	217.524	169.022	980.844	567.683	413.161	2,54
Interannual rate	5,96	4,48	7,60	6,59	7,06	6,30	0,59
Cumulative interannual rate	2,18	0,49	4,65	2,66	0,95	4,04	0,47

### 2. Open establishments, capacity, occupancy and employed personnel by categories of establishment

Category	Estimated open establishments	Estimated bedplaces	Level of occupancy			Employed personnel
			Per bedplaces	Per bedplaces at weekend	Per rooms	
<b>TOTAL</b>	15.462	1.508.865	52,92	60,07	57,98	220.014
<b>HOTELS: Golden stars</b>						
Five	210	68.544	50,07	62,55	59,70	22.463
Four	1.726	540.502	59,46	67,98	66,93	94.092
Three	2.613	513.970	57,97	64,06	61,18	66.679
Two	1.949	132.855	44,01	51,47	49,14	14.003
One	1.238	55.262	33,91	40,61	38,92	5.306
<b>INNS: Silver stars</b>						
Two and three	3.055	101.538	35,59	40,99	40,17	8.917
One	4.670	96.192	32,78	35,43	38,69	8.554
Interannual rate	3,03	2,57	3,73	5,17	2,01	2,58

### 3. Travellers, overnight stays, occupancy, average stay and employed personnel

Results by areas and tourist sites

	Travellers		Overnight stays		Level of occupancy			Average stay	Employed personnel
	Residents in Spain	Residents abroad	Residents in Spain	Residents abroad	Per bedplace	Per bedplaces at weekend	Per rooms		
<b>Tourist areas with a greater level of occupancy per month</b>									
Costa de Barcelona	144.711	388.868	241.313	835.861	68,59	79,27	81,02	2,02	9.814
Costa Blanca	172.551	135.711	595.075	680.115	64,52	73,97	66,60	4,14	8.847
Isla de Mallorca	72.621	689.459	264.988	4.150.884	64,45	63,62	64,90	5,79	30.500
Isla de Gran Canaria	66.408	101.408	213.591	778.398	62,62	68,04	70,49	5,91	8.964
Costa del Maresme	43.801	93.134	130.407	455.707	62,26	69,46	63,14	4,28	2.811
Costa del Sol	179.481	253.606	466.670	1.119.076	61,97	71,07	67,52	3,66	13.398
Isla de Tenerife	107.231	130.476	444.436	1.080.348	60,28	65,30	65,82	6,41	14.883
Isla de Fuerteventura	15.070	69.474	39.655	556.153	59,66	61,62	65,78	7,05	5.495

#### Tourist areas with a greater number of overnight stays per month \*

Costa Brava	100.694	216.418	268.778	781.638	50,63	60,60	51,89	3,31	7.539
Costa Daurada	118.621	133.221	314.238	629.730	54,28	67,94	58,58	3,75	6.206
Islas de Ibiza-Formentera	43.103	119.323	146.155	590.791	48,65	54,20	52,02	4,54	5.874
Costa de la Luz de Cádiz	127.128	71.012	305.163	279.465	49,23	60,35	54,87	2,95	6.006
Isla de Lanzarote	28.118	53.029	113.774	334.172	53,29	55,06	61,70	5,52	4.598
Costa de Almería	79.703	23.558	259.123	141.441	42,04	48,78	48,06	3,88	2.826
Isla de Menorca	17.761	46.798	60.004	323.633	52,38	44,94	47,29	5,94	2.686
Costa de la Luz de Huelva	65.973	22.566	165.652	118.533	44,93	56,05	47,46	3,21	2.188

#### Tourist sites with a greater level of occupancy per month

Benidorm	74.467	80.344	412.070	509.517	79,27	86,69	78,67	5,95	5.225
Muro	2.811	61.974	5.324	399.233	77,58	75,05	74,06	6,24	3.022
Córdoba	49.965	38.116	82.558	53.818	75,81	86,69	79,62	1,55	828
Calviá	8.872	164.083	47.310	1.011.575	72,49	67,85	69,20	6,12	7.012
Pollença	546	17.663	1.687	114.118	72,43	82,08	82,13	6,36	784
Torremolinos	43.518	62.610	142.835	300.450	70,68	78,30	73,93	4,18	2.563
San Bartolomé de Tirajana	32.358	72.229	131.246	591.805	70,07	75,62	76,02	6,91	6.295
Benalmádena	18.724	51.111	58.386	262.390	69,95	76,69	76,45	4,59	1.682
Barcelona	140.306	388.693	234.569	834.967	69,08	79,71	81,69	2,02	9.717
Palma de Mallorca	35.738	146.569	109.291	716.989	68,95	70,69	69,12	4,53	5.835

#### Tourist sites with a greater number of overnight stays per month \*

Madrid	347.580	341.848	602.877	747.816	61,83	70,68	76,36	1,96	12.724
Adeje	30.998	65.270	122.348	567.511	64,74	71,03	70,78	7,17	6.679
Salou	49.455	89.900	157.112	450.138	62,65	78,42	66,43	4,36	3.009
Lloret de Mar	24.365	101.656	116.778	457.076	67,42	75,50	67,98	4,55	2.619
Pájara	2.629	43.405	13.027	371.991	63,79	64,18	66,41	8,36	3.437
Sant Llorenç des Cardassar	1.587	49.502	4.788	353.323	55,86	47,66	53,49	7,01	2.458
Sevilla	87.572	95.166	158.118	182.170	65,21	76,34	76,20	1,86	2.848
Arona	9.656	36.385	42.873	296.553	64,68	67,41	75,36	7,37	2.688
Puerto de La Cruz	33.351	12.828	187.031	118.159	60,08	64,37	58,61	6,61	2.954
Valencia	84.332	65.449	150.769	141.647	54,94	72,34	65,66	1,95	3.018

\* Not taken into account those included in the preceding table because they are in the bigger level of occupancy tables too.

## 4. Travellers, overnight stays, average stay.

### Results by Autonomous Communities and provinces

Provinces	Number of tr			Overnight stays			Average stay
	Total	Residents in Spain	Residents abroad	Total	Residents in Spain	Residents abroad	
<b>TOTAL</b>	8.094.398	4.195.319	3.899.080	25.033.472	9.481.220	15.552.252	3,09
<b>Andalucía</b>	1.564.712	866.639	698.073	4.219.094	1.953.242	2.265.852	2,70
Almería	110.587	85.816	24.771	418.394	274.585	143.809	3,78
Cádiz	242.199	151.180	91.019	659.297	346.950	312.347	2,72
Córdoba	116.602	72.007	44.595	184.354	118.635	65.719	1,58
Granada	211.676	108.093	103.583	433.287	223.319	209.968	2,05
Huelva	105.927	80.258	25.669	313.015	190.207	122.808	2,96
Jaén	51.352	42.933	8.420	84.434	72.621	11.813	1,64
Málaga	483.687	204.075	279.612	1.680.977	508.031	1.172.946	3,48
Sevilla	242.682	122.277	120.405	445.336	218.895	226.442	1,84
<b>Aragón</b>	192.250	158.745	33.505	406.320	339.043	67.277	2,11
Huesca	48.546	38.638	9.908	106.098	86.464	19.635	2,19
Teruel	28.420	25.769	2.651	57.747	52.684	5.062	2,03
Zaragoza	115.285	94.338	20.946	242.475	199.895	42.580	2,10
<b>Asturias (Principado de)</b>	135.389	113.824	21.566	274.063	229.708	44.355	2,02
<b>Balears (Illes)</b>	989.066	133.485	855.581	5.536.454	471.147	5.065.308	5,60
<b>Canarias</b>	587.928	225.740	362.189	3.640.234	833.825	2.806.409	6,19
Palmas (Las)	333.506	109.595	223.910	2.035.742	367.020	1.668.722	6,10
Santa Cruz de Tenerife	254.423	116.144	138.278	1.604.492	466.805	1.137.687	6,31
<b>Cantabria</b>	101.843	78.812	23.032	221.555	175.282	46.272	2,18
<b>Castilla y León</b>	424.948	315.754	109.194	725.870	561.326	164.543	1,71
Ávila	28.567	21.826	6.740	47.790	37.205	10.585	1,67
Burgos	74.606	47.456	27.150	122.197	86.248	35.948	1,64
León	79.392	54.458	24.934	124.165	91.996	32.169	1,56
Palencia	23.377	16.038	7.339	41.073	30.012	11.061	1,76
Salamanca	81.681	60.864	20.818	157.869	123.452	34.417	1,93
Segovia	37.279	30.279	7.000	64.434	51.363	13.071	1,73
Soria	16.541	14.844	1.697	31.790	29.011	2.779	1,92
Valladolid	60.365	50.018	10.347	98.643	78.857	19.786	1,63
Zamora	23.139	19.971	3.168	37.908	33.183	4.726	1,64
<b>Castilla-La Mancha</b>	202.027	164.062	37.964	365.517	301.854	63.662	1,81
Albacete	30.304	28.085	2.219	69.606	64.821	4.785	2,30
Ciudad Real	45.485	39.322	6.163	83.003	72.471	10.531	1,82
Cuenca	31.923	27.821	4.103	56.249	49.450	6.798	1,76
Guadalajara	29.403	24.523	4.880	47.736	40.851	6.885	1,62
Toledo	64.911	44.312	20.599	108.923	74.261	34.662	1,68
<b>Cataluña</b>	1.463.421	554.390	909.031	4.085.410	1.233.861	2.851.549	2,79
Barcelona	824.530	278.070	546.460	1.952.850	534.605	1.418.244	2,37
Girona	334.367	114.185	220.182	1.084.118	297.216	786.902	3,24
Lleida	52.681	43.514	9.168	104.475	87.802	16.673	1,98
Tarragona	251.842	118.621	133.221	943.968	314.238	629.730	3,75
<b>Comunitat Valenciana</b>	661.548	423.267	238.280	2.107.903	1.183.428	924.475	3,19
Alicante	322.251	185.354	136.897	1.298.021	614.449	683.572	4,03
Castellón	87.444	70.335	17.110	268.819	214.274	54.546	3,07
Valencia	251.852	167.578	84.274	541.062	354.705	186.357	2,15
<b>Extremadura</b>	112.070	95.925	16.145	209.772	180.849	28.922	1,87
Badajoz	55.321	48.384	6.938	97.905	84.590	13.315	1,77
Cáceres	56.749	47.542	9.207	111.866	96.259	15.607	1,97
<b>Galicia</b>	327.795	241.642	86.152	680.119	529.401	150.718	2,07
Coruña (A)	149.276	100.963	48.312	315.724	228.861	86.863	2,12
Lugo	52.828	37.553	15.275	81.570	63.307	18.263	1,54
Ourense	28.346	25.143	3.202	55.380	47.296	8.083	1,95
Pontevedra	97.345	77.983	19.362	227.446	189.937	37.509	2,34
<b>Madrid (Comunidad de)</b>	874.558	496.546	378.013	1.660.151	842.557	817.594	1,90
<b>Murcia (Región de)</b>	111.812	90.389	21.423	285.061	220.564	64.497	2,55
<b>Navarra (Comunidad Foral de)</b>	79.664	55.934	23.730	138.871	102.465	36.406	1,74
<b>País Vasco</b>	201.118	131.328	69.790	368.135	235.813	132.321	1,83
Álava	27.390	21.035	6.355	46.758	35.984	10.774	1,71
Guipúzcoa	81.135	49.077	32.058	156.873	93.530	63.343	1,93
Vizcaya	92.593	61.216	31.377	164.504	106.299	58.205	1,78
<b>Rioja (La)</b>	54.382	40.442	13.940	88.798	68.782	20.016	1,63
<b>Ceuta</b>	6.263	5.399	865	11.303	10.173	1.130	1,80
<b>Melilla</b>	3.604	2.996	608	8.844	7.899	945	2,45



## 5. Establishment, capacity, occupancy and employed personnel

### Results by Autonomous Communities and provinces

Provinces	Estimated open establishments	Estimated bedplaces	Level of occupancy			Employed personnel
			Per bedplaces	Per bedplaces at weekends	Per rooms	
<b>TOTAL</b>	15.462	1.508.865	52,92	60,07	57,98	220.014
<b>Andalucía</b>	2.478	258.691	52,13	62,06	57,59	38.036
Almería	213	32.146	41,53	47,90	47,15	3.126
Cádiz	448	44.779	47,13	57,53	51,81	7.138
Córdoba	188	9.568	61,55	71,49	65,28	1.320
Granada	389	26.348	52,52	65,81	56,12	3.742
Huelva	166	23.672	42,18	52,51	45,31	2.545
Jaén	192	8.579	31,61	43,47	36,66	1.301
Málaga	575	89.085	60,34	69,85	65,69	14.900
Sevilla	308	24.514	58,05	69,24	67,52	3.964
<b>Aragón</b>	747	33.823	38,62	46,50	45,06	4.643
Huesca	292	12.424	27,47	37,31	31,28	1.465
Teruel	206	6.830	27,17	40,66	30,51	830
Zaragoza	249	14.569	53,50	57,12	62,17	2.349
<b>Asturias (Principado de)</b>	679	25.373	34,65	48,48	40,70	3.201
<b>Balears (Illes)</b>	1.168	290.122	60,82	60,51	61,34	39.060
<b>Canarias</b>	483	196.523	59,12	63,27	65,88	35.017
Palmas (Las)	230	109.359	59,47	63,00	67,02	19.057
Santa Cruz de Tenerife	252	87.164	58,68	63,62	64,47	15.961
<b>Cantabria</b>	364	17.620	40,37	54,65	44,89	2.590
<b>Castilla y León</b>	1.473	59.738	38,94	49,33	44,11	8.318
Ávila	122	5.060	30,35	47,39	33,47	647
Burgos	223	8.888	43,70	47,60	49,15	1.242
León	302	10.860	36,71	44,32	42,20	1.282
Palencia	110	3.727	35,47	40,29	41,80	460
Salamanca	231	10.785	46,99	62,60	50,09	1.528
Segovia	127	5.479	37,68	52,38	42,96	852
Soria	115	3.741	27,36	35,60	30,83	499
Valladolid	146	7.779	40,66	52,42	49,82	1.226
Zamora	97	3.419	35,60	43,28	39,44	583
<b>Castilla-La Mancha</b>	816	32.453	36,23	43,13	42,51	4.074
Albacete	130	5.543	40,42	45,53	49,64	667
Ciudad Real	191	7.578	35,20	39,11	42,90	965
Cuenca	154	5.226	34,65	42,44	36,39	601
Guadalajara	147	4.980	30,87	42,89	39,41	560
Toledo	194	9.126	38,36	45,50	43,06	1.280
<b>Cataluña</b>	2.086	238.750	54,01	64,08	59,55	31.721
Barcelona	903	101.382	61,31	70,16	70,03	15.897
Girona	629	69.240	49,19	59,23	50,56	8.155
Lleida	284	14.012	24,02	29,49	27,02	1.464
Tarragona	269	54.116	54,28	67,94	58,58	6.206
<b>Comunitat Valenciana</b>	1.034	122.843	54,78	64,96	59,04	17.198
Alicante	465	66.579	62,13	71,76	64,48	9.267
Castellón	197	19.843	43,22	53,85	48,20	2.428
Valencia	372	36.422	47,65	58,65	54,61	5.503
<b>Extremadura</b>	378	17.424	38,66	51,11	44,40	2.750
Badajoz	159	8.223	38,22	51,82	46,42	1.333
Cáceres	219	9.201	39,05	50,47	42,55	1.417
<b>Galicia</b>	1.489	61.480	35,57	41,95	42,01	7.420
Coruña (A)	610	24.237	41,89	46,51	50,27	2.820
Lugo	292	8.791	29,83	37,93	35,56	998
Ourense	182	6.221	28,56	33,36	34,89	748
Pontevedra	406	22.232	32,90	41,01	37,39	2.854
<b>Madrid (Comunidad de)</b>	1.197	92.947	57,31	66,06	70,93	15.818
<b>Murcia (Región de)</b>	201	19.168	47,61	58,18	50,69	3.036
<b>Navarra (Comunidad Foral de)</b>	272	10.808	41,21	47,42	50,71	1.548
<b>País Vasco</b>	432	23.235	50,86	64,03	63,66	4.162
Álava	74	3.485	43,14	54,24	57,12	557
Guipúzcoa	210	9.344	53,75	68,57	63,61	1.668
Vizcaya	148	10.406	50,85	63,24	65,96	1.937
<b>Rioja (La)</b>	141	6.184	46,15	63,70	52,92	1.086
<b>Ceuta</b>	13	833	43,05	58,82	62,47	167
<b>Melilla</b>	11	848	33,64	37,62	43,21	170

HOS (TABLES ANNEX) - MAY 2008 (4/9)

Provisional data

## 6. Percentage distribution of Spanish travellers in each province by Autonomous Community of origin

Results by provinces

(Continued)

Provinces	Total	Andalucía	Aragón	Asturias (P. de)	Balears (Illes)	Canarias	Cantabria	Castilla y León	Castilla-La Mancha	Cataluña
TOTAL	100	17,83	2,69	2,72	1,88	3,06	1,48	5,04	3,67	15,85
Álava	100	5,92	2,43	5,26	0,65	0,42	2,08	8,06	1,64	12,88
Albacete	100	8,27	1,08	1,41	0,99	0,52	0,67	4,24	18,20	8,76
Alicante	100	5,21	2,18	2,41	1,15	0,52	1,07	4,25	5,05	6,81
Almería	100	45,93	2,15	1,05	0,15	0,39	0,22	1,62	6,02	5,12
Asturias	100	5,01	1,61	16,49	0,79	0,93	4,42	8,59	2,14	6,51
Ávila	100	7,85	1,56	2,30	1,31	2,16	2,11	17,05	3,94	4,89
Badajoz	100	25,75	0,85	0,94	0,44	0,83	0,73	5,56	3,56	5,90
Balears (Illes)	100	17,90	0,84	1,13	21,65	0,77	0,38	1,53	1,58	21,28
Barcelona	100	7,22	2,89	3,68	3,03	2,06	0,80	2,51	1,62	39,92
Burgos	100	5,68	3,46	4,49	0,22	1,25	4,21	16,35	2,46	10,21
Cáceres	100	15,88	1,33	2,16	1,50	1,74	1,50	6,44	4,15	7,01
Cádiz	100	56,75	1,06	0,75	0,60	0,90	0,61	2,95	3,00	3,79
Cantabria	100	4,24	2,02	6,83	0,50	1,26	8,87	12,03	3,59	8,66
Castellón	100	4,76	3,43	0,91	1,21	0,31	0,36	2,48	10,68	19,70
Ciudad Real	100	16,57	0,97	1,83	0,61	1,07	0,99	4,03	17,51	5,36
Córdoba	100	46,38	1,40	0,88	0,87	1,06	0,85	2,69	3,71	6,61
Coruña (A)	100	4,54	1,65	4,36	1,05	1,25	1,29	5,38	2,30	10,53
Cuenca	100	7,61	1,88	1,17	0,86	0,80	1,01	4,14	15,22	9,05
Girona	100	2,64	1,25	0,91	1,03	0,25	0,85	1,49	0,68	76,07
Granada	100	48,05	0,98	0,64	1,18	1,25	0,28	2,21	2,65	6,75
Guadalajara	100	8,16	4,13	0,76	0,76	2,01	1,56	5,12	13,73	13,24
Guipúzcoa	100	5,88	3,82	2,52	0,88	0,81	1,91	5,59	1,57	22,01
Huelva	100	69,10	0,45	0,83	0,40	0,63	0,52	2,17	3,26	2,66
Huesca	100	2,54	28,72	1,52	1,06	1,82	0,81	2,28	1,82	26,74
Jaén	100	50,70	0,79	0,43	0,33	0,63	0,40	2,24	2,71	6,79
León	100	4,41	0,94	9,40	0,46	0,69	2,83	20,16	1,40	6,85
Lleida	100	2,25	2,87	0,53	1,60	0,99	0,33	0,94	0,60	73,48
Lugo	100	4,09	1,05	7,19	0,38	2,09	2,43	6,39	2,19	6,98
Madrid	100	15,23	3,09	3,32	1,99	3,59	2,44	5,00	3,30	14,18
Málaga	100	59,35	1,36	1,12	0,87	1,25	0,36	2,48	1,98	5,95
Murcia	100	11,70	1,45	1,17	1,73	1,00	0,76	2,99	6,78	9,03
Navarra	100	6,73	3,61	2,87	1,34	1,44	1,73	6,49	2,35	15,74
Ourense	100	4,28	0,51	2,95	0,58	0,57	0,65	6,88	1,21	4,60
Palencia	100	3,26	1,49	5,13	1,17	0,81	4,91	18,27	1,98	10,81
Palmas (Las)	100	3,98	0,39	0,71	1,74	37,20	0,87	1,27	1,25	4,64
Pontevedra	100	6,07	1,15	5,34	1,18	1,30	1,56	9,49	3,62	7,10
Rioja (La)	100	5,69	5,79	4,43	0,75	2,42	3,93	5,62	2,82	15,16
Salamanca	100	6,71	1,63	5,33	0,99	1,45	3,07	18,32	3,63	4,20
S. C. Tenerife	100	11,66	0,64	0,80	1,01	27,28	0,45	1,20	1,79	5,62
Segovia	100	5,99	1,73	4,31	1,24	0,54	2,14	16,60	4,32	4,58
Sevilla	100	41,68	1,19	1,27	0,79	2,05	0,85	2,62	2,82	9,23
Soria	100	2,58	6,14	2,65	0,24	1,36	1,14	21,47	3,19	12,27
Tarragona	100	2,49	6,24	0,55	0,98	0,58	0,81	1,12	5,01	54,69
Teruel	100	2,67	17,35	0,83	1,42	0,59	0,61	2,14	3,53	22,13
Toledo	100	14,03	2,09	1,29	0,62	0,93	1,25	7,88	16,31	5,43
Valencia	100	9,68	2,04	1,24	1,70	1,04	0,81	3,05	5,72	15,13
Valladolid	100	6,80	3,01	3,23	0,51	1,85	2,31	26,24	2,39	7,35
Vizcaya	100	4,24	2,81	2,64	1,48	0,90	2,36	6,45	2,55	15,09
Zamora	100	4,80	1,04	6,07	0,37	0,63	2,72	15,78	2,26	10,85
Zaragoza	100	6,60	14,80	1,62	0,65	0,76	1,62	5,75	4,06	20,20
Ceuta	100	53,81	0,09	0,25	0,94	0,08	1,37	1,10	1,01	3,20
Melilla	100	70,96	0,28	0,55	0,40	1,29	-	0,76	1,04	2,10

## 6. Percentage distribution of Spanish travellers in each province by Autonomous Community of origin

Results by provinces

(Conclusion)

Provinces	Comunitat Valenciana	Extremadura	Galicia	Madrid (C. de)	Murcia (Región de)	Navarra (C. Foral de)	País Vasco	Rioja (La)	Ceuta y Melilla
TOTAL	8,55	1,71	5,27	20,67	2,25	1,34	4,79	0,74	0,47
Álava	3,53	0,76	3,11	23,19	0,45	2,34	26,34	0,86	0,08
Albacete	23,63	0,99	2,01	18,44	7,41	0,73	2,03	0,35	0,28
Alicante	37,10	0,50	1,30	22,20	3,08	1,05	5,10	0,93	0,10
Almería	8,97	1,82	0,50	15,00	8,93	0,41	0,99	0,38	0,37
Asturias	3,13	0,83	14,53	23,07	1,03	1,10	9,02	0,78	0,02
Ávila	5,24	3,18	4,14	38,13	1,33	0,61	2,62	0,82	0,75
Badajoz	6,46	15,71	2,53	24,81	1,40	0,73	3,26	0,34	0,20
Balears (Illes)	9,38	0,57	2,23	16,45	1,74	0,39	1,74	0,35	0,10
Barcelona	6,80	0,73	1,92	17,28	1,41	1,34	3,76	1,19	1,83
Burgos	4,44	1,64	6,00	25,38	1,31	1,21	10,59	1,05	0,05
Cáceres	4,39	11,09	4,35	31,68	0,91	1,02	3,69	0,84	0,31
Cádiz	2,63	2,95	1,37	16,37	1,67	0,38	2,52	0,23	1,46
Cantabria	3,65	0,79	6,63	24,17	0,43	1,93	12,81	1,61	0,02
Castellón	27,33	0,37	1,29	20,98	1,14	0,57	4,00	0,42	0,05
Ciudad Real	11,42	2,91	1,78	27,13	3,30	1,00	2,55	0,88	0,08
Córdoba	4,94	1,95	1,09	21,49	2,23	0,64	2,10	0,44	0,67
Coruña (A)	3,33	1,05	39,64	18,22	0,80	0,73	3,48	0,29	0,12
Cuenca	15,99	2,46	2,13	28,71	3,40	0,81	2,97	1,70	0,11
Girona	3,85	1,00	1,55	5,55	0,27	0,80	1,59	0,21	0,01
Granada	6,88	1,74	1,41	19,07	4,61	0,40	1,12	0,27	0,52
Guadalajara	9,10	3,16	2,87	28,53	1,85	0,89	2,85	1,23	0,06
Guipúzcoa	3,43	0,71	3,77	22,56	0,43	2,90	19,93	1,13	0,15
Huelva	1,88	4,24	0,81	10,07	1,27	0,23	1,22	0,10	0,18
Huesca	5,85	1,02	0,82	13,30	1,28	3,44	5,89	1,09	-
Jaén	9,50	0,80	1,93	17,59	2,36	0,63	1,61	0,32	0,24
León	2,44	0,90	14,53	24,63	0,65	1,24	7,66	0,78	0,05
Lleida	4,55	0,45	0,77	6,83	0,71	0,45	1,85	0,42	0,39
Lugo	2,09	1,24	42,74	13,73	1,22	1,62	3,66	0,88	0,05
Madrid	9,27	2,68	4,71	19,32	2,81	2,05	5,35	1,18	0,50
Málaga	2,71	1,15	1,16	16,07	0,84	0,15	1,71	0,18	1,33
Murcia	17,83	0,79	1,88	19,36	19,85	0,61	2,54	0,45	0,10
Navarra	5,80	0,78	3,82	19,67	0,89	12,54	13,28	0,93	0,01
Ourense	1,29	0,20	60,38	13,11	0,50	0,24	1,94	0,11	-
Palencia	3,16	1,01	7,15	26,14	0,77	1,34	11,84	0,75	-
Palmas (Las)	1,26	0,66	1,84	40,74	0,66	0,55	1,79	0,30	0,16
Pontevedra	2,66	0,96	32,72	17,25	0,87	1,30	5,54	1,73	0,16
Rioja (La)	8,11	0,54	5,01	18,16	1,07	2,80	14,47	3,19	0,05
Salamanca	3,43	3,70	6,09	27,77	3,66	2,06	6,90	0,95	0,10
S. C. Tenerife	2,15	0,33	1,01	43,36	0,17	0,79	1,61	0,10	0,02
Segovia	5,03	1,26	3,39	39,28	1,27	1,69	5,30	0,76	0,59
Sevilla	4,37	2,99	1,78	22,64	1,63	0,93	1,97	0,44	0,74
Soria	5,84	0,32	2,39	25,77	2,03	1,46	9,28	1,82	0,06
Tarragona	7,01	0,24	0,71	8,31	0,98	2,83	6,52	0,79	0,13
Teruel	26,42	0,17	1,02	14,17	1,76	1,55	2,51	1,12	0,02
Toledo	8,92	3,38	3,59	24,15	2,68	1,32	5,14	0,38	0,61
Valencia	23,86	0,82	2,24	24,97	3,06	0,90	2,79	0,44	0,52
Valladolid	3,88	1,59	7,81	24,54	0,70	1,04	5,80	0,85	0,11
Vizcaya	3,90	1,18	4,89	23,74	1,16	2,73	22,88	0,90	0,11
Zamora	2,70	1,23	10,56	31,05	1,08	0,75	7,47	0,33	0,31
Zaragoza	7,25	1,14	3,47	20,90	1,15	2,61	5,94	1,36	0,11
Ceuta	0,50	0,26	5,13	17,77	1,11	-	0,17	0,17	13,04
Melilla	3,35	1,02	0,80	8,52	1,08	0,13	0,79	0,25	6,69

## 7. Percentage distribution of overnight stays in each province by Autonomous Community of origin

Results by provinces

(Continued)

Provinces	Total	Andalucía	Aragón	Asturias (P. de)	Balears (Illes)	Canarias	Cantabria	Castilla y León	Castilla-La Mancha	Cataluña
TOTAL	100	17,29	2,65	2,69	1,94	3,02	1,41	5,24	4,04	14,90
Álava	100	6,52	2,31	4,34	0,58	0,45	2,84	8,07	1,71	14,30
Albacete	100	8,19	0,67	0,96	0,77	0,37	0,39	3,52	23,94	6,18
Alicante	100	4,48	3,00	3,94	1,13	0,44	2,00	6,18	3,83	4,27
Almería	100	35,08	1,05	1,77	0,45	0,95	1,12	3,50	8,31	7,21
Asturias	100	7,03	2,00	13,37	0,88	1,22	3,68	8,36	2,39	6,74
Ávila	100	8,77	1,41	2,22	1,22	1,80	2,14	16,49	4,84	5,37
Badajoz	100	25,07	0,80	0,79	0,31	0,57	0,64	4,39	3,32	5,48
Balears (Illes)	100	20,61	0,88	1,15	15,74	0,91	0,45	2,99	3,21	19,31
Barcelona	100	7,53	2,68	4,74	2,61	2,50	1,34	3,08	2,27	39,32
Burgos	100	5,37	2,73	4,52	0,25	1,56	3,70	19,48	2,42	8,91
Cáceres	100	16,51	1,41	2,31	1,00	1,38	1,55	5,30	3,64	6,95
Cádiz	100	53,27	0,76	0,63	0,50	0,81	0,69	3,69	3,50	3,86
Cantabria	100	5,71	2,37	5,76	0,72	1,14	7,65	11,45	4,08	9,78
Castellón	100	6,35	3,11	1,16	0,40	0,83	0,25	3,95	10,79	15,66
Ciudad Real	100	15,97	0,83	1,15	0,82	0,88	0,68	3,79	19,21	5,77
Córdoba	100	41,87	1,50	1,06	0,74	1,44	0,69	3,09	3,23	7,66
Coruña (A)	100	4,21	1,43	4,87	1,23	1,04	1,15	5,63	3,65	9,72
Cuenca	100	7,59	1,46	1,25	1,18	0,84	0,90	4,56	14,07	9,68
Girona	100	6,75	1,01	0,99	2,12	0,22	0,43	3,33	0,45	60,70
Granada	100	46,94	1,29	1,37	1,20	1,10	0,30	2,35	2,38	7,57
Guadalajara	100	8,73	3,71	1,01	0,70	1,93	1,94	5,59	16,90	12,22
Guipúzcoa	100	5,73	4,07	2,66	0,80	0,79	1,77	5,63	2,09	22,47
Huelva	100	61,70	0,48	2,12	1,59	1,58	0,59	3,42	3,38	2,18
Huesca	100	3,34	28,30	1,45	1,29	0,89	0,96	2,98	1,34	24,41
Jaén	100	51,15	0,80	0,34	0,29	0,60	0,26	1,82	2,83	7,59
León	100	4,14	0,87	9,00	0,38	0,61	2,72	22,20	1,37	7,55
Lleida	100	2,31	2,79	0,49	2,18	1,06	0,31	0,95	0,49	70,83
Lugo	100	3,21	0,84	6,96	0,45	1,49	1,94	6,48	2,45	6,18
Madrid	100	15,54	2,92	3,33	1,88	4,16	2,44	5,07	3,11	14,56
Málaga	100	52,70	1,74	1,42	0,85	1,71	0,39	4,02	2,91	5,95
Murcia	100	9,45	1,96	1,95	2,06	0,81	1,12	4,35	7,38	9,86
Navarra	100	7,21	3,83	2,33	1,07	1,91	2,20	6,07	2,25	15,41
Ourense	100	5,08	0,27	2,53	0,26	0,31	0,34	9,21	0,98	6,63
Palencia	100	5,48	1,11	5,78	1,35	1,43	4,30	19,32	1,36	7,40
Palmas (Las)	100	4,36	0,48	0,95	1,61	24,88	1,26	1,29	1,07	5,85
Pontevedra	100	8,48	1,52	4,52	1,17	1,98	1,55	9,08	6,01	7,13
Rioja (La)	100	7,83	5,75	3,97	0,69	2,66	2,97	5,15	3,38	14,38
Salamanca	100	6,27	1,48	6,06	1,37	1,31	2,26	23,94	2,71	4,00
S. C. Tenerife	100	14,77	0,75	1,12	0,79	14,04	0,48	1,63	3,00	6,38
Segovia	100	6,52	2,10	7,58	1,45	0,66	1,69	16,53	4,16	4,66
Sevilla	100	39,10	1,45	1,18	0,98	2,22	0,71	2,55	2,90	10,65
Soria	100	2,42	6,09	5,01	0,88	1,06	0,87	21,91	3,56	13,62
Tarragona	100	3,11	6,13	0,68	0,92	1,77	1,14	1,02	5,66	49,75
Teruel	100	2,56	21,46	1,30	0,85	0,61	0,93	2,46	4,05	20,15
Toledo	100	13,07	1,97	1,43	0,68	1,08	1,27	9,02	15,41	5,21
Valencia	100	9,65	1,94	1,38	1,69	1,31	0,99	3,73	6,90	12,75
Valladolid	100	8,26	2,95	3,23	0,66	1,80	2,57	22,80	2,50	8,08
Vizcaya	100	5,25	2,86	2,57	1,61	1,25	1,94	5,83	2,54	16,00
Zamora	100	3,95	0,69	4,41	0,23	0,79	2,35	17,04	2,12	12,53
Zaragoza	100	5,99	16,46	1,27	0,77	0,65	1,30	7,08	3,52	19,35
Ceuta	100	61,70	0,04	0,13	0,72	0,12	1,08	1,35	0,78	4,36
Melilla	100	73,02	0,12	0,32	1,00	1,86	-	0,37	0,86	1,45

## 7. Percentage distribution of overnight stays in each province by Autonomous Community of origin

Results by provinces

(Conclusion)

Provinces	Comunitat Valenciana	Extremadura	Galicia	Madrid (C. de)	Murcia (Región de)	Navarra (C. Foral de)	País Vasco	Rioja (La)	Ceuta y Melilla
TOTAL	8,02	1,65	5,25	22,31	1,94	1,41	5,14	0,73	0,37
Álava	3,15	0,68	4,86	23,44	0,49	2,45	22,99	0,72	0,09
Albacete	21,96	1,31	2,10	20,18	6,42	0,80	1,71	0,35	0,20
Alicante	24,78	0,69	1,85	23,89	2,24	2,48	13,27	1,49	0,03
Almería	6,30	1,65	1,96	20,02	7,23	0,66	1,77	0,69	0,29
Asturias	4,32	1,01	12,12	26,19	0,94	0,93	8,08	0,69	0,04
Ávila	4,56	3,27	4,22	37,55	1,13	0,64	2,70	0,98	0,69
Badajoz	9,16	14,87	3,02	24,73	1,09	0,49	4,78	0,27	0,24
Balears (Illes)	8,73	0,40	3,54	18,04	1,15	0,25	2,03	0,54	0,09
Barcelona	5,84	0,66	2,46	15,13	1,35	1,59	4,19	1,05	1,64
Burgos	5,17	1,40	6,55	24,73	1,62	1,07	9,50	0,95	0,07
Cáceres	5,43	10,98	3,82	32,42	1,08	1,01	3,72	1,20	0,29
Cádiz	2,78	2,43	2,44	18,19	1,73	0,51	2,93	0,24	1,03
Cantabria	4,49	0,70	6,77	26,63	0,47	1,46	9,25	1,58	0,01
Castellón	20,57	0,45	2,95	25,43	0,90	0,79	5,16	1,17	0,05
Ciudad Real	10,06	2,99	1,85	29,72	2,86	0,66	2,07	0,65	0,04
Córdoba	6,54	2,10	1,85	22,18	2,23	0,59	2,20	0,40	0,64
Coruña (A)	3,34	0,95	42,49	14,91	1,13	0,65	3,24	0,25	0,09
Cuenca	15,84	2,59	2,88	28,72	3,40	1,14	2,40	1,34	0,17
Girona	5,41	2,54	2,72	10,10	0,27	0,78	1,99	0,20	0,00
Granada	6,57	1,96	1,56	19,90	3,62	0,34	0,94	0,25	0,36
Guadalajara	7,46	4,23	3,05	26,34	1,36	0,69	2,91	1,20	0,03
Guipúzcoa	3,46	0,72	4,27	21,61	0,63	2,44	18,99	1,78	0,08
Huelva	1,82	4,56	0,93	11,02	0,88	0,28	3,29	0,05	0,13
Huesca	6,79	0,50	1,12	16,99	0,77	3,98	4,19	0,70	-
Jaén	8,85	0,69	1,46	17,80	3,19	0,51	1,35	0,29	0,19
León	2,37	0,89	15,12	23,69	0,67	1,10	6,56	0,73	0,06
Lleida	5,22	0,37	0,65	8,82	1,02	0,41	1,49	0,26	0,36
Lugo	1,67	1,29	43,45	17,53	0,88	1,17	3,28	0,70	0,03
Madrid	8,74	2,62	5,56	18,46	2,57	1,93	5,46	1,12	0,54
Málaga	2,36	1,76	1,16	18,02	0,98	0,23	2,87	0,14	0,78
Murcia	14,84	1,02	2,65	21,89	14,75	1,18	4,14	0,36	0,22
Navarra	7,06	0,59	3,78	20,11	0,77	13,30	11,38	0,74	0,02
Ourense	0,89	0,40	56,21	14,86	0,30	0,15	1,48	0,08	-
Palencia	3,47	0,87	7,53	25,90	0,41	1,09	12,42	0,76	-
Palmas (Las)	1,42	0,95	1,94	48,66	0,44	0,86	3,03	0,80	0,13
Pontevedra	2,98	1,06	27,59	17,10	1,07	1,05	6,49	1,15	0,08
Rioja (La)	7,83	0,53	5,22	20,14	1,14	2,18	13,40	2,64	0,17
Salamanca	3,20	4,46	5,74	25,31	2,62	1,80	6,45	0,85	0,17
S. C. Tenerife	2,58	0,55	1,49	48,85	0,18	0,90	2,34	0,12	0,02
Segovia	5,82	1,42	3,89	32,66	1,94	1,37	6,10	0,54	0,92
Sevilla	4,57	2,74	1,76	23,10	1,48	0,91	2,46	0,51	0,74
Soria	5,89	0,28	2,26	23,29	1,42	1,27	8,81	1,31	0,05
Tarragona	4,73	0,36	0,78	8,33	0,89	5,14	8,25	1,24	0,12
Teruel	23,48	0,22	1,74	14,66	1,61	1,18	2,13	0,58	0,03
Toledo	10,71	3,86	4,43	21,78	2,60	1,04	4,56	0,42	1,47
Valencia	25,28	0,74	2,39	23,74	2,68	0,85	3,02	0,37	0,58
Valladolid	4,33	2,32	8,05	23,37	0,88	1,09	6,11	0,82	0,19
Vizcaya	4,33	1,31	5,93	24,63	1,47	2,31	19,26	0,80	0,11
Zamora	2,02	1,10	9,66	35,18	0,72	0,68	6,09	0,27	0,16
Zaragoza	7,00	1,48	4,43	20,93	1,01	2,49	5,12	1,05	0,09
Ceuta	0,35	0,14	2,79	16,07	1,11	-	0,07	0,22	8,97
Melilla	2,34	1,17	0,60	7,45	0,49	0,11	0,65	0,32	7,88

## 8. Travellers, overnight stays and average stay by country of residence

### Results by countries

Countries	Number of travellers		Overnight stays	
	Total	%	Total	%
TOTAL	8.094.398	100,00	25.033.472	100,00
Residents in Spain	4.195.319	51,83	9.481.220	37,87
Residents abroad	3.899.080	48,17	15.552.252	62,13
Total Residents in Spain	3.899.080	100,00	15.552.252	100,00
Total Residents in U.E. (without Spain)	3.105.604	79,65	13.635.638	87,68
- Germany	851.699	21,84	4.689.920	30,16
- Austria	35.570	0,91	133.106	0,86
- Belgium	96.451	2,47	460.612	2,96
- Denmark	34.456	0,88	129.047	0,83
- Finland	18.462	0,47	57.988	0,37
- France	448.122	11,49	1.134.446	7,29
- Greece	13.042	0,33	32.844	0,21
- Ireland	70.058	1,80	271.780	1,75
- Italy	208.645	5,35	574.008	3,69
- Luxembourg	6.919	0,18	33.803	0,22
- Netherlands	163.169	4,18	720.718	4,63
- Poland	30.875	0,79	100.204	0,64
- Portugal	105.469	2,70	282.848	1,82
- United Kingdom	898.275	23,04	4.561.382	29,33
- Czech Republic	16.764	0,43	66.634	0,43
- Sweden	61.287	1,57	256.156	1,65
- Rest of UE*	46.343	1,19	130.142	0,84
Norway	30.557	0,78	109.506	0,70
Russia	44.673	1,15	189.575	1,22
Switzerland	58.422	1,50	214.527	1,38
Rest of Europe	70.419	1,81	214.177	1,38
Japan	52.035	1,33	82.536	0,53
United States of America	169.232	4,34	333.834	2,15
Rest of America	179.296	4,60	395.186	2,54
African's countries	26.598	0,68	58.230	0,37
Rest of the world	162.244	4,16	319.043	2,05

\*Countries included in the Rest of UE: Bulgaria, Cyprus, Slovakia, Slovenia, Estonia, Hungary, Latvia, Lithuania, Malta and Romania

## HOTEL INCOME INDEX (HII)

**May 2008**

Provisional data

### General Autonomous Communities and national indices

	Index	Interannual variation rate
<b>TOTAL</b>	<b>116,3</b>	<b>2,0</b>
Andalucía	117,1	-0,4
Aragón	139,5	1,9
Asturias (Principado de)	118,1	6,4
Balears (Illes)	109,4	3,8
Canarias	100,1	0,9
Cantabria	111,7	0,3
Castilla y León	130,5	0,8
Castilla-La Mancha	134,9	1,2
Cataluña	123,6	2,7
Comunitat Valenciana	116,3	2,2
Extremadura	130,5	3,0
Galicia	117,3	0,7
Madrid (Comunidad de)	130,6	2,7
Murcia (Región de)	111,8	1,3
Navarra (Comunidad Foral de)	122,5	3,0
País Vasco	114,1	0,8
Rioja (La)	127,5	3,8
Ceuta	136,0	10,2
Melilla	163,4	0,9

HII (ANNEX OF TABLES) - May 2008

24th June 2008

## Hotel Price Index (HPI)

**May 2008**

Provisional data

### General Autonomous Communities and national indices

May	Index	Interannual variation rate
<b>TOTAL</b>	<b>112,7</b>	<b>1,3</b>
Andalucía	115,9	-1,3
Aragón	129,9	1,8
Asturias (Principado de)	112,4	4,3
Balears (Illes)	108,2	3,2
Canarias	102,9	1,5
Cantabria	105,5	1,3
Castilla y León	117,5	0,9
Castilla-La Mancha	127,7	1,0
Cataluña	118,5	2,2
Comunitat Valenciana	111,9	0,3
Extremadura	121,3	-0,6
Galicia	114,6	0,7
Madrid (Comunidad de)	116,3	2,0
Murcia (Región de)	116,7	2,2
Navarra (Comunidad Foral de)	120,3	0,8
País Vasco	113,7	-0,1
Rioja (La)	121,9	1,0
Ceuta	148,3	10,4
Melilla	118,2	8,9

**HPI (ANNEX OF TABLES) - May 2008**

**24th June 2008**