

23 July 2020

Hotel Tourism Short-Term Trends (HOS/HPI/IPHS)
June 2020. Provisional data

Overnight stays in hotel establishments decrease 95.1% in June as compared with the same month of 2019

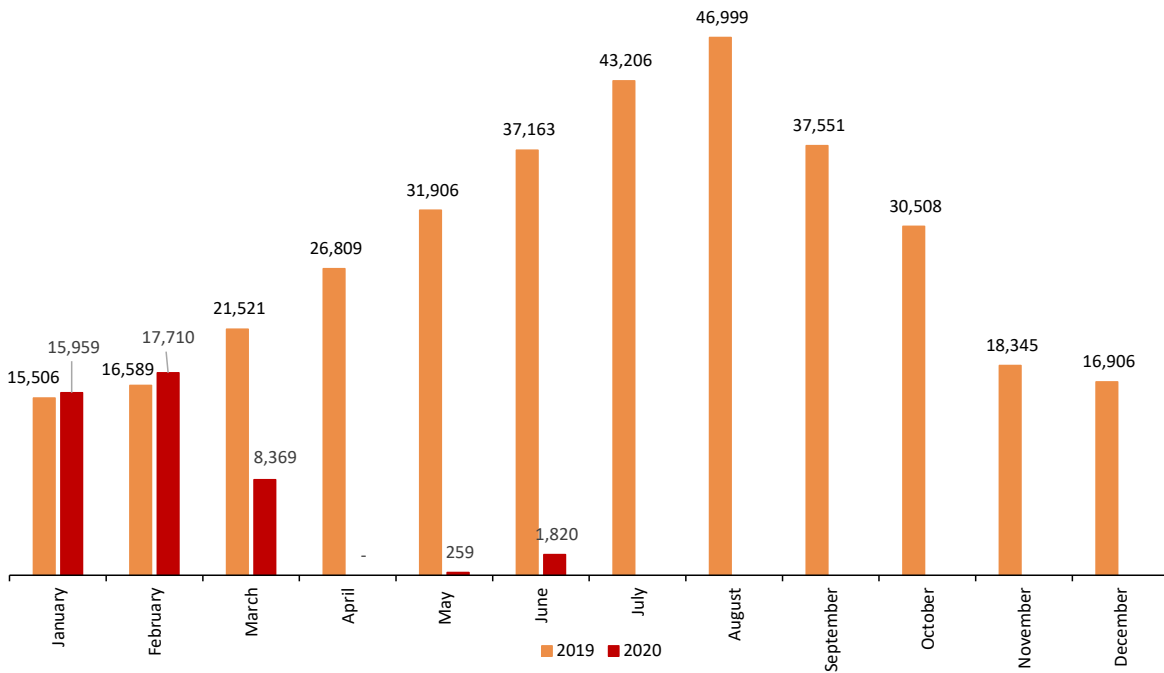
COVID-19's Effects on the Hotel Tourism Short-Terms Trends (HOS/HPI/IPHS) in June

- In accordance with Royal Decree 555/2020¹, the state of alarm came to an end on June 21st, allowing population mobility throughout the national territory. However, as a result of the restrictions in the first three weeks of June, only 5,896 of Spain's nearly 20,000 hotels were open, 64.6% less than a year ago. The total number of bed-places offered was 322,508, or 17.6% of the total.
- During the month of June, 920,778 travellers stayed in a hotel establishment, with a total of 1,820,455 overnight stays. Both figures represent less than 10% of the estimated totals for these variables a year ago. Four-star hotels were the most visited, followed by three-star.
- The autonomous community with the most hotels open in June was Andalucía, with 916. Andalusian hotels also received the most travellers (208,347, with a total of 386,502 overnight stays). It was followed by Cataluña and Comunidad de Madrid.
- In the first half of the year, there were 44.1 million overnight stays in Spanish hotels, 70.5% less than the same period for 2019.
- Due to the scant number of hotels that are open, a reduced quantity of information is disseminated today. Only the data at the national level, by autonomous communities, and by provinces meets is of sufficient quality to be disseminated. Information by area and tourist point is not given in this press release. The Hotel Price Index and the Hotel Sector Profitability Indicators are published nationally, broken down by hotel establishment category.

¹ Royal Decree 555/2020, of June 5th, extends the high alert period declared by Royal Decree 463/2020, of March 14, which declared the high alert period in order to manage the health crisis situation caused by COVID-19.

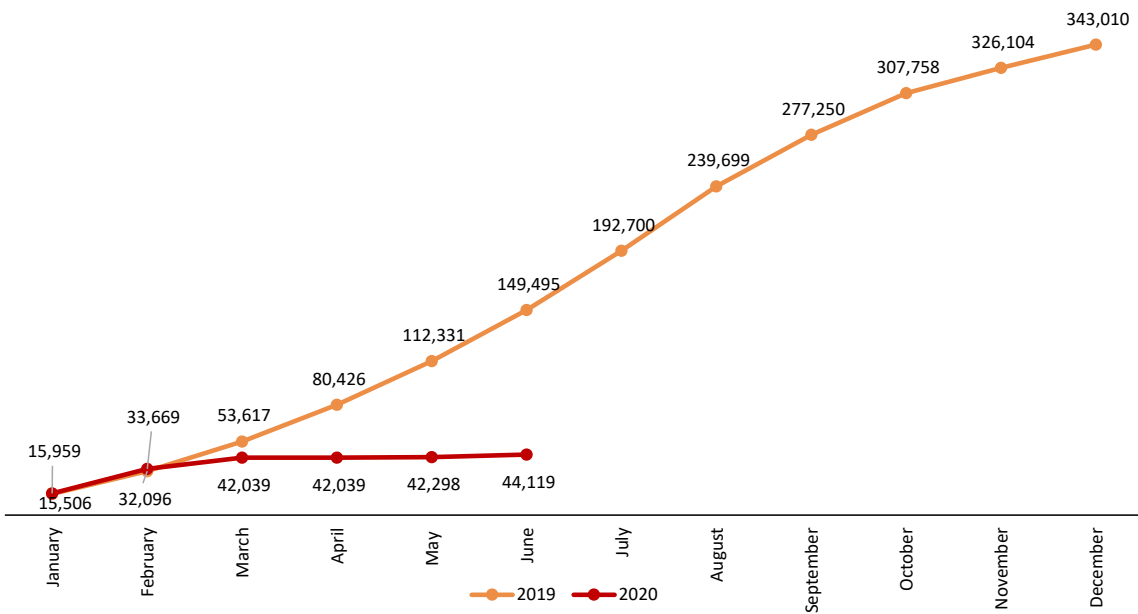
Overnight stays. Comparison 2019-2020

Thousands



Cumulative overnights. Comparison 2019-2020

Thousands



Open establishments

In June, a total of 5,896 hotels were open in Spain, 64.6% less than in the same month of 2019. This represents 31.1% of the total directory of establishments in that month.

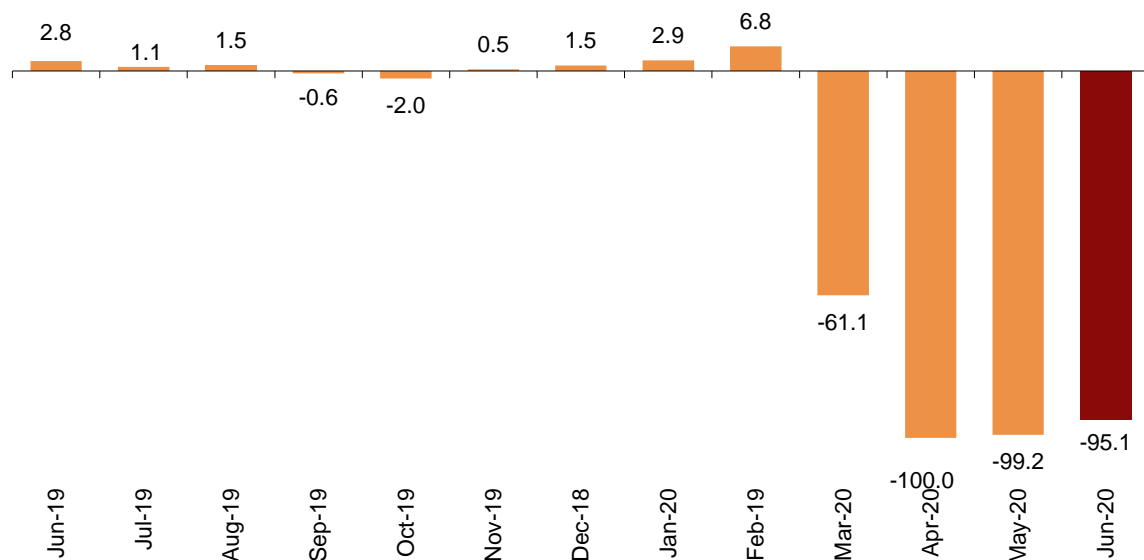
Categoría	Número establecimientos abiertos estimados según la encuesta	Porcentaje sobre el total de establecimientos de directorio	Número de habitaciones estimadas según la encuesta	Porcentaje sobre el total de habitaciones de directorio	Número de plazas estimadas según la encuesta	Porcentaje sobre el total de plazas de directorio
TOTAL	5.896	31,1	162.252	17,6	322.508	16,7
HOTELES: Estrellas oro						
Cinco	22	6,1	2.432	4,5	5.049	4,4
Cuatro	487	17,0	48.131	12,0	101.417	11,6
Tres	743	23,8	35.627	14,5	72.470	13,9
Dos	793	33,9	20.871	29,1	40.504	28,7
Una	565	38,6	11.285	35,1	21.655	34,5
HOSTALES: Estrellas plata						
Tres y dos	1.454	39,4	22.115	39,7	41.061	38,7
Una	1.832	36,0	21.791	36,9	40.353	37,2
Tasa anual	-64,6		-81,4		-82,4	

Overnight stays

Overnight stays in hotel establishments exceeded 1.8 million in June, representing a decrease of 95.1% compared to the 37.1 million for the same month of 2019.

Annual variation rate for overnight stays

Percentage



During the first six months of 2020, overnight stays decreased by 70.5% as compared with the same period of the previous year.

By country of residence, overnight stays by residents of Spain decreased by 87.0% in the annual rate, exceeding 1.5 million. In turn, overnight stays by non-residents decreased 98.8%, with just over 310,000.

Regarding this final point, it should be noted that according to order INT/551/2020 of June 21, which extends the criteria for the application of a temporary restriction on non-essential travel from third countries into the European Union and Schengen associated member countries for reasons of public order and public health, due to the health crisis caused by COVID-19, habitual residents of the European Union, the Schengen associated member states and Andorra may enter Spain starting on June 21, except for the internal land borders with Portugal, which remain closed until July 1². On the other hand, starting on June 15, a pilot program will be launched to open safe tourist corridors to the Illes Balears, for travellers from Germany³.

Furthermore, the average stay decreased 39.5% compared to June 2019, standing at 2.0 overnight stays per traveller.

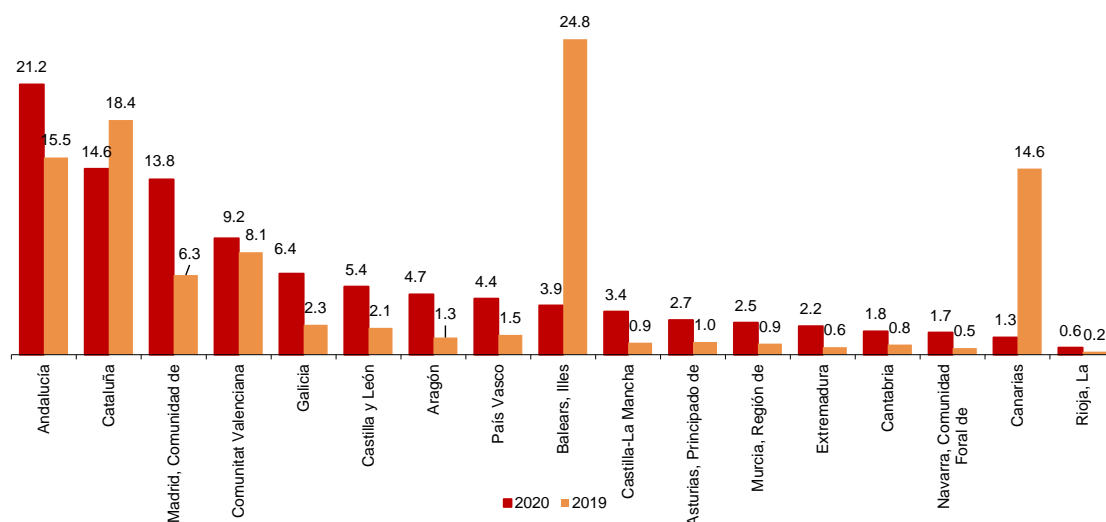
Destinations

Andalucía, Cataluña, and Comunidad de Madrid were the main destinations of residents in Spain in June, with annual variation rates in the number of overnight stays of -93.3%, -96.1% and -89.2%, respectively.

The distinct percentage distribution of overnight stays in Illes Balears should be noted as compared to last year. In June 2020, 3.9% of total overnight stays were in this autonomous community (with an annual rate of -99.2%), compared to 24.8% of the total (93.0% made by non-residents) in June 2019.

Distribution of overnight stays. Comparison May 2019-2020

Percentage



²Order INT/550/2020, of June 21, which extends controls at the internal borders with Portugal; these controls are temporarily put back in place due to the health crisis caused by COVID-19.

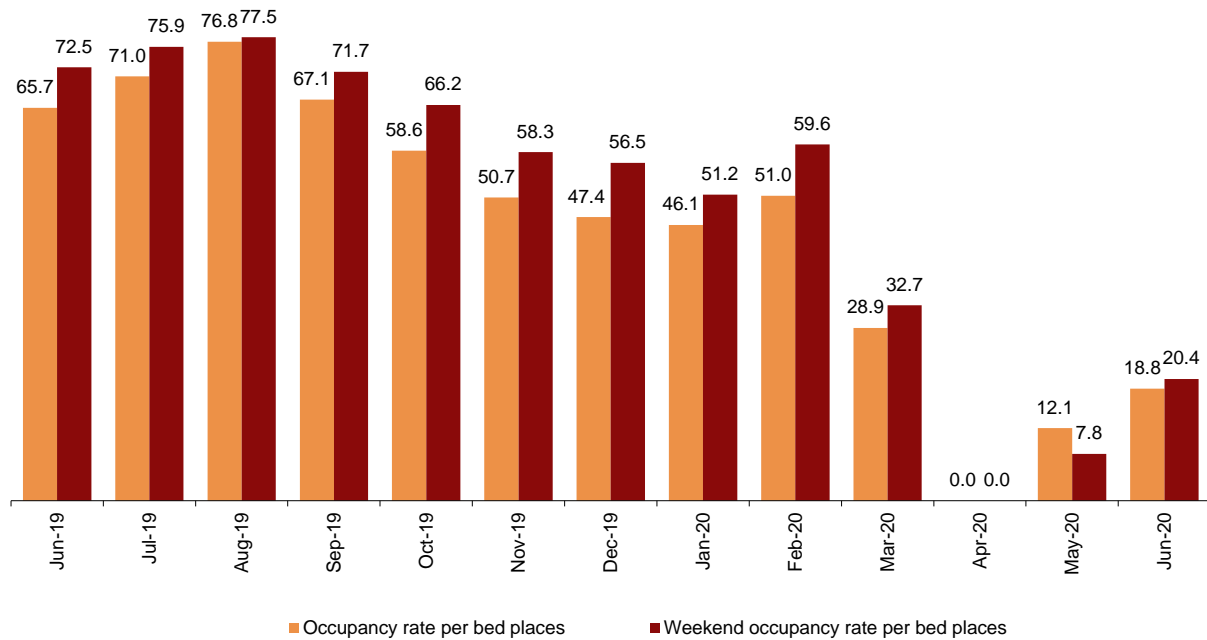
³Order SND/518/2020, of June 11, regulating the authorization of a pilot program to open safe tourist corridors in the Autonomous Community of Illes Balears through the partial lifting of the temporary controls at the internal borders established due to the health crisis caused by COVID-19.

Hotel occupancy

In June, 18.8% of the available bed-places were occupied, indicating an annual decrease of 71.5%. The weekend occupancy rate by bed-places declined by 71.9%, standing at 20.4%.

Occupancy rate

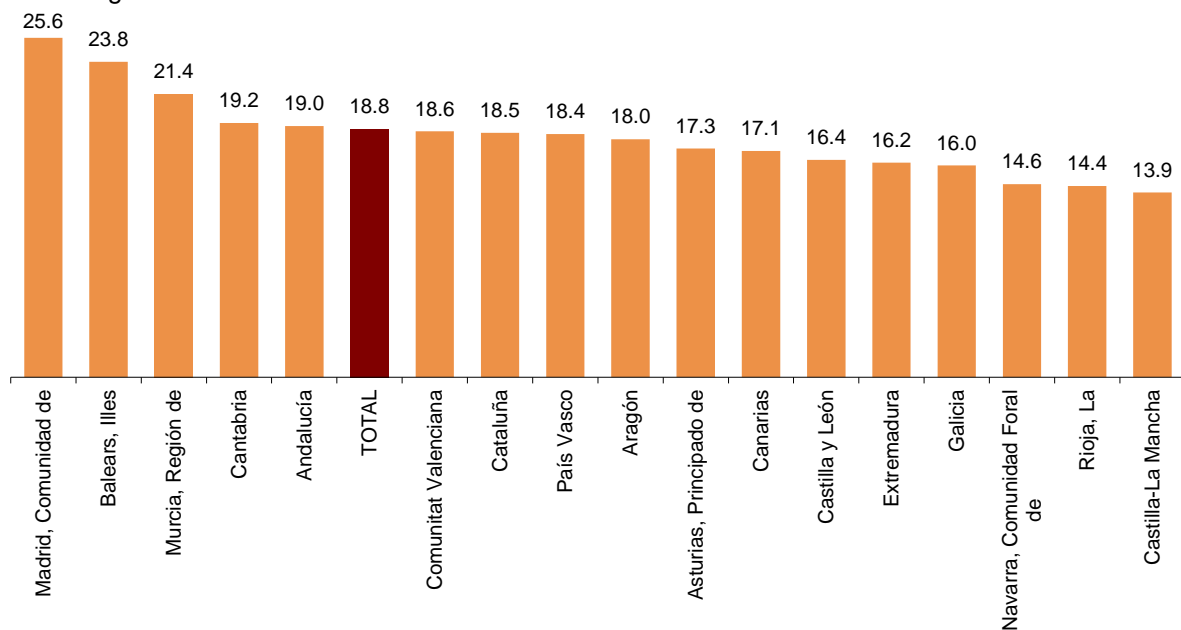
Percentage



Comunidad de Madrid showed the highest occupancy rate by bed-places in June (25.6%). It was followed by Illes Balears, with 23.8%.

Occupancy rate per bed-places by Autonomous Community

Percentage



Hotel Prices

The annual rate of the Hotel Prices Index (HPI) stood at -11.1% June, 14.6 points below that recorded a year ago.

Hotel Price Index

National and breakdown by categories

	Índice	Tasa de variación anual
TOTAL	107,58	-11,07
HOTELES: Estrellas oro		
Cinco	81,58	-25,52
Cuatro	104,50	-9,83
Tres	125,31	-6,84
Dos	110,84	-7,43
Una	117,43	-6,70
HOSTALES: Estrellas plata		
Tres y dos	104,70	-12,08
Una	105,83	-10,82

By categories, the largest price decrease was recorded in establishments with five gold stars (-25.5%).

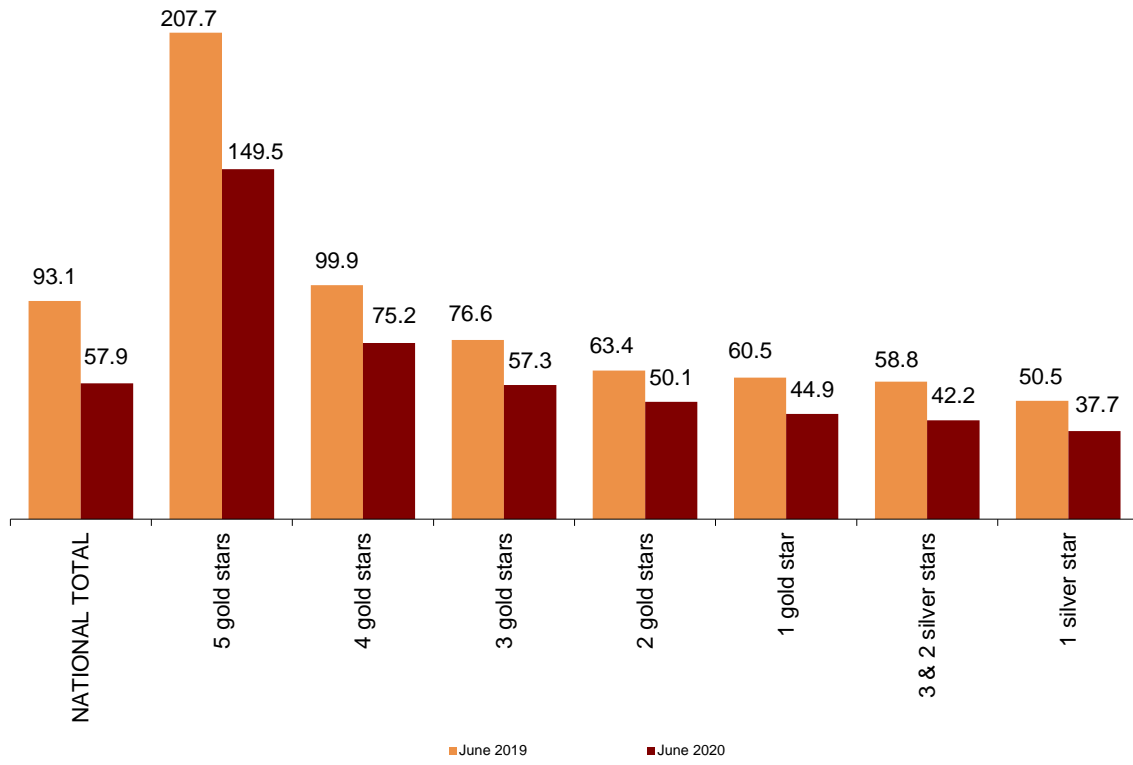
Hotel Sector Profitability

In June, the average daily rate per occupied room (ADR) was 57.9 euros, a decrease of 37.8% as compared to the same month in 2019.

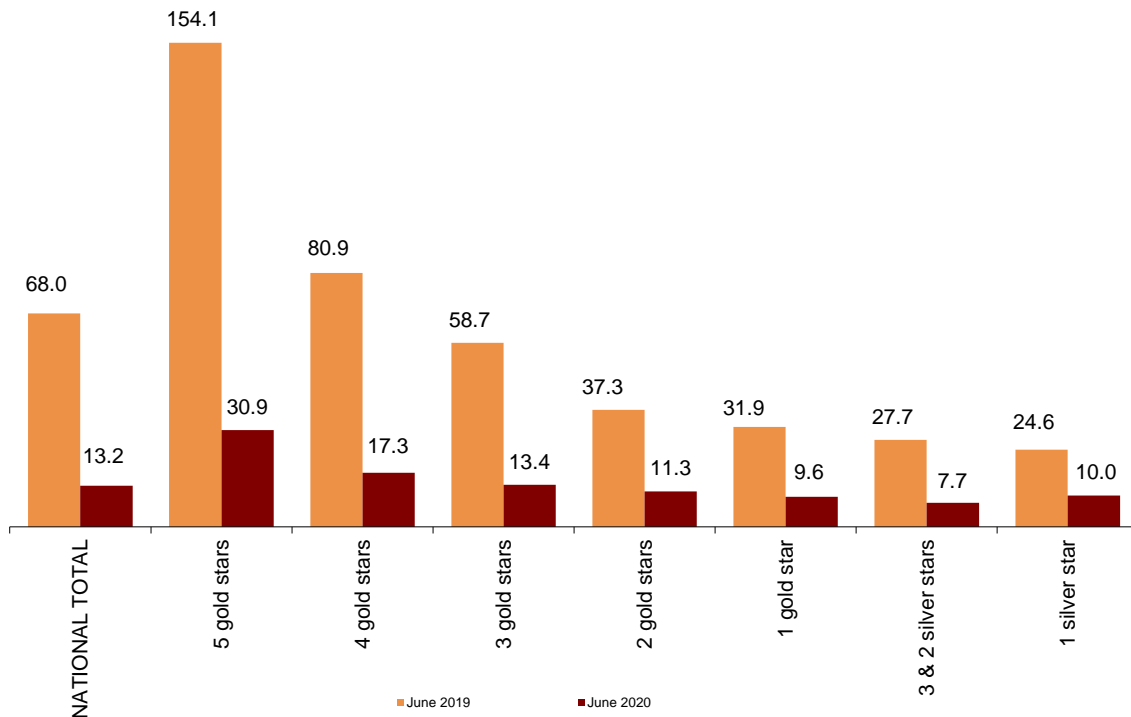
On the other hand, the average daily revenue per available room (RevPAR), which is conditioned by the occupancy registered in hotel establishments, reached 13.2 euros, with a 80.6% decrease.

By category, the average rate was 149.5 euros for five-star hotels, 75.2 euros for four-star hotels and 57.3 euros for three-star hotels. Revenue per available room for these same categories were 30.9, 17.3 and 13.4 euros, respectively.

Average daily rate by hotel category
Euros



Revenue per available room by hotel category
Euros



Revision and updating of data

Coinciding with today's publication, the INE has updated the data corresponding to June 2019 in the Hotel Occupancy Survey (HOS), the Hotel Price Index (HPI) and the Indicators on the Profitability of the Hotel Sector (IPHS).

Methodological note

The main objective of the Hotel Occupancy Survey (HOS) is to ascertain the behaviour of a series of variables that make it possible to describe the fundamental characteristics of the hotel sector, from the viewpoint of both supply and demand, thus meeting the needs of national institutions and the requirements of international organisations for knowledge regarding the sector.

The Hotel Price Index (HPI) is a statistical measure of the monthly evolution of prices applied to clients by hotel entrepreneurs.

The main objective of the Indicators of Profitability of the Hotel Sector (IRSH) is to facilitate decision-making in the hotel sector. These are the *Average Daily Rate* (ADR), which collects the average daily income per occupied room; and the *Revenue per Available Room* (RevPAR), which collects the average daily revenue per available room.

Type of operation: on-going monthly survey.

Population scope: all hotel establishments.

Geographical scope: the entire national territory.

Reference period for the results: monthly.

Reference period of the information: seven consecutive days of each month, chosen randomly in such way that, between all the establishments, the entire month is covered.

Sample design: stratified sampling by province and establishment category, with 4 and 5 gold star categories being exhaustive.

Sample size: approximately 9,250 establishments in winter and 11,200 in summer.

Collection method: questionnaire filled in directly by the hotel establishment.

For more information on these statistical operations, you can consult the [methodology and the standardised methodological report](#) for each operation in INEbase.

For further information see **INEbase:** www.ine.es/en/ Twitter: [@es_ine](https://twitter.com/es_ine)

All press releases at: www.ine.es/en/prensa/prensa_en.htm

Press office: Telephone numbers: (+34) 91 583 93 63 /94 08 – gprensa@ine.es

Information Area: Telephone number: (+34) 91 583 91 00 – www.ine.es/infoine/?L=1

Tourist Accommodation Occupancy Survey (Hotels and similar establishments)

June 2020

Provisional Data

23rd July 2020

1. Guests, overnight stays and average stay by category of establishment

Category	Number of guests			Number of overnight stays			Average stay
	Total	Residents in Spain	Residents abroad	Total	Residents in Spain	Residents abroad	
TOTAL	920,778	806,101	114,677	1,820,455	1,509,785	310,669	1.98
HOTELS: Golden stars							
Five	14,197	11,832	2,365	25,561	20,922	4,639	1.80
Four	325,345	279,789	45,556	584,401	493,700	90,701	1.80
Three	248,258	215,623	32,635	455,457	390,783	64,675	1.83
Two	117,248	105,012	12,236	214,076	187,452	26,624	1.83
One	56,390	50,939	5,451	102,337	90,078	12,259	1.81
INNS: Silver stars							
Two and three	82,705	74,971	7,735	170,259	151,860	18,400	2.06
One	76,634	67,934	8,699	268,363	174,991	93,372	3.50
Annual rate	-91.90	-84.45	-98.15	-95.10	-86.99	-98.78	-39.50
Cumulative annual rate	-68.50	-63.44	-73.33	-70.49	-66.41	-72.66	-6.31

2. Open establishments, capacity, occupancy and employed personnel by category of establishment

Category	Estimated open establishments	Estimated bedrooms	Estimated bed-places	Occupancy rate			Employed personnel
				Of bed-places	Of bed-places at weekend	Of bedrooms	
TOTAL	5,896	162,252	322,508	18.75	20.37	24.15	28,341
HOTELS: Golden stars							
Five	22	2,432	5,049	16.71	27.07	19.09	927
Four	487	48,131	101,417	19.10	21.38	24.54	12,350
Three	743	35,627	72,470	20.90	20.66	26.97	6,491
Two	793	20,871	40,504	17.53	20.12	23.10	2,475
One	565	11,285	21,655	15.74	17.90	21.36	1,314
INNS: Silver stars							
Two and three	1,454	22,115	41,061	13.81	14.23	18.65	2,414
One	1,832	21,791	40,353	22.15	24.28	27.25	2,369
Annual rate	-64.62	-81.36	-82.36	-71.47	-71.91	-66.85	-89.43

3. Guests, overnight stays and average stay

Results by Autonomous City and Community and province

	Number of guests			Overnight stays			Average stay
	Total	Residents in Spain	Residents abroad	Total	Residents in Spain	Residents abroad	
TOTAL	920,778	806,101	114,677	1,820,455	1,509,785	310,669	1.98
Andalucía	208,347	188,696	19,651	386,502	342,097	44,404	1.86
Almería	27,630	24,777	2,853	53,702	48,976	4,727	1.94
Cádiz	64,879	58,655	6,224	120,437	106,523	13,915	1.86
Córdoba	8,858	8,347	511	16,275	14,085	2,190	1.84
Granada	20,465	18,651	1,814	32,646	29,333	3,313	1.60
Huelva	12,791	12,055	736	30,231	28,060	2,171	2.36
Jaén	7,690	7,274	416	12,159	11,506	653	1.58
Málaga	37,976	33,696	4,280	71,841	63,144	8,697	1.89
Sevilla	28,058	25,241	2,818	49,211	40,471	8,740	1.75
Aragón	44,162	40,080	4,082	86,187	75,565	10,622	1.95
Huesca	11,277	10,449	829	24,594	22,399	2,195	2.18
Teruel	5,655	5,328	327	10,179	9,547	631	1.80
Zaragoza	27,230	24,303	2,927	51,414	43,619	7,796	1.89
Asturias, Principado de	27,666	26,447	1,220	49,587	46,997	2,590	1.79
Balears, Illes	24,035	18,421	5,613	70,252	53,729	16,523	2.92
Canarias	9,998	8,612	1,386	24,508	19,771	4,736	2.45
Palmas, Las	4,559	3,684	875	14,414	10,564	3,850	3.16
Santa Cruz de Tenerife	5,439	4,928	511	10,094	9,208	886	1.86
Cantabria	18,178	16,739	1,439	33,324	30,018	3,306	1.83
Castilla y León	49,669	44,409	5,260	97,424	88,167	9,257	1.96
Ávila	4,650	4,518	132	9,603	9,195	408	2.07
Burgos	9,389	7,334	2,055	14,884	12,505	2,379	1.59
León	7,987	7,549	438	16,879	15,990	889	2.11
Palencia	2,863	2,394	470	6,077	5,125	951	2.12
Salamanca	6,613	5,770	843	12,029	10,254	1,775	1.82
Segovia	2,982	2,804	178	6,183	5,804	379	2.07
Soria	2,602	2,430	172	7,000	6,765	235	2.69
Valladolid	9,591	8,768	824	18,864	16,881	1,983	1.97
Zamora	2,992	2,843	149	5,904	5,647	257	1.97
Castilla-La Mancha	31,230	28,697	2,533	61,577	53,946	7,631	1.97
Albacete	8,034	7,340	694	14,819	12,505	2,314	1.84
Ciudad Real	7,722	7,173	549	14,726	13,433	1,293	1.91
Cuenca	3,580	3,412	167	6,768	6,429	339	1.89
Guadalajara	5,073	4,567	506	12,671	10,638	2,034	2.50
Toledo	6,820	6,205	615	12,593	10,941	1,652	1.85
Cataluña	143,836	112,638	31,198	265,997	206,925	59,072	1.85
Barcelona	48,867	36,598	12,269	97,210	70,406	26,804	1.99
Girona	53,994	39,213	14,782	91,905	67,267	24,638	1.70
Lleida	11,798	10,735	1,063	23,577	21,896	1,681	2.00
Tarragona	29,177	26,092	3,085	53,306	47,356	5,949	1.83
Comunitat Valenciana	85,222	75,409	9,812	166,611	147,059	19,552	1.96
Alicante/Alacant	31,301	27,705	3,596	53,250	46,716	6,535	1.70
Castellón/Castelló	14,858	13,765	1,093	31,601	29,654	1,947	2.13
Valencia/València	39,063	33,939	5,124	81,759	70,689	11,070	2.09
Extremadura	22,863	21,288	1,575	40,694	37,663	3,031	1.78
Badajoz	14,479	13,492	987	25,610	23,583	2,027	1.77
Cáceres	8,384	7,796	588	15,084	14,080	1,004	1.80
Galicia	56,875	53,739	3,136	115,952	105,018	10,934	2.04
Coruña, A	20,592	19,158	1,434	36,016	32,668	3,348	1.75
Lugo	8,990	8,548	442	16,219	15,158	1,060	1.80
Ourense	7,791	7,524	268	14,605	13,468	1,137	1.87
Pontevedra	19,502	18,510	992	49,112	43,723	5,389	2.52
Madrid, Comunidad de	102,584	87,143	15,441	250,570	154,639	95,931	2.44
Murcia, Región de	28,015	25,347	2,668	45,901	41,100	4,801	1.64
Navarra, Comunidad Foral de	17,819	15,986	1,833	31,480	27,659	3,821	1.77
País Vasco	42,837	35,702	7,134	80,184	66,892	13,293	1.87
Araba/Álava	7,688	6,634	1,054	16,474	13,933	2,541	2.14
Bizkaia	17,605	15,849	1,756	33,697	29,120	4,577	1.91
Gipuzkoa	17,544	13,219	4,325	30,014	23,838	6,175	1.71
Rioja, La	5,842	5,199	643	10,149	9,136	1,013	1.74
Ceuta¹	-	-	-	-	-	-	-
Melilla¹	-	-	-	-	-	-	-

¹ The size of the sample in these communities does not facilitate the INE the broken down results, with the objective of maintaining statistical secrecy. Nevertheless, the data corresponding to these communities are included in the national total.

4. Establishment, capacity, occupancy and employed personnel

Results by Autonomous City and Community and province

	Estimated open establishments	Estimated bedrooms	Estimated bed-places	Occupancy rate			Employed personnel
				Of bed-places	Of bed-places at weekends	Of bedrooms	
TOTAL	5,896	162,252	322,508	18.75	20.37	24.15	28,341
Andalucía	916	32,102	67,694	18.97	25.01	23.78	6,531
Almería	101	3,454	7,747	23.04	28.37	28.01	640
Cádiz	228	7,192	15,609	25.63	38.78	30.24	2,089
Córdoba	87	1,643	3,235	16.74	15.60	24.15	250
Granada	115	3,972	8,079	13.45	17.18	16.45	455
Huelva	67	1,782	3,864	26.04	28.87	32.02	392
Jaén	67	1,717	3,305	12.23	12.90	16.16	383
Málaga	144	7,802	16,769	14.18	22.12	18.45	1,654
Sevilla	107	4,539	9,087	18.02	16.87	25.41	670
Aragón	369	8,206	15,955	17.97	19.03	24.59	1,071
Huesca	125	2,247	4,748	17.23	24.53	22.20	299
Teruel	75	1,375	2,717	12.47	13.50	16.83	230
Zaragoza	169	4,584	8,490	20.14	17.72	28.08	541
Asturias, Principado de	245	4,891	9,565	17.27	18.05	21.98	682
Balears, Illes	99	4,999	9,824	23.80	23.64	28.39	805
Canarias	49	2,160	4,772	17.09	18.43	26.97	594
Palmas, Las	21	899	1,907	25.15	25.67	38.82	190
Santa Cruz de Tenerife	28	1,261	2,865	11.72	13.61	18.51	404
Cantabria	98	2,873	5,710	19.20	24.34	21.47	714
Castilla y León	526	10,668	19,771	16.40	13.47	22.91	1,738
Ávila	31	890	1,782	17.92	19.13	24.21	158
Burgos	70	1,756	3,147	15.75	11.86	21.79	273
León	109	2,105	3,838	14.65	9.58	22.65	270
Palencia	36	567	1,019	19.84	11.10	23.89	95
Salamanca	82	1,333	2,524	15.85	12.17	21.48	215
Segovia	53	970	1,857	11.07	11.75	12.78	167
Soria	57	983	1,800	12.96	16.09	20.45	149
Valladolid	53	1,470	2,702	23.20	19.14	31.45	232
Zamora	36	596	1,101	17.82	12.45	26.86	181
Castilla-La Mancha	392	7,739	14,705	13.94	12.39	19.80	1,118
Albacete	65	1,488	2,924	16.87	14.44	26.66	195
Ciudad Real	86	1,921	3,579	13.70	13.31	18.55	294
Cuenca	76	1,279	2,445	9.22	6.11	12.90	202
Guadalajara	75	1,441	2,806	15.03	14.92	21.23	162
Toledo	89	1,609	2,951	14.20	12.06	19.15	265
Cataluña	817	23,239	47,595	18.46	21.42	22.53	3,976
Barcelona	300	10,253	20,664	15.66	15.74	21.42	1,537
Girona	281	6,105	12,456	24.29	32.20	26.61	1,259
Lleida	113	2,548	5,456	14.38	14.75	18.97	413
Tarragona	123	4,333	9,018	19.28	23.57	21.50	767
Comunitat Valenciana	437	14,514	29,833	18.56	18.33	25.20	2,644
Alicante/Alacant	153	4,693	9,672	18.33	19.38	24.56	1,010
Castellón/Castelló	93	2,903	6,124	17.13	15.20	20.12	624
Valencia/València	191	6,918	14,036	19.35	18.98	27.76	1,010
Extremadura	182	4,319	8,364	16.20	11.87	22.93	883
Badajoz	97	2,353	4,517	18.89	13.14	26.49	474
Cáceres	85	1,966	3,847	13.04	10.38	18.66	410
Galicia	639	12,961	24,130	15.98	16.95	19.94	2,350
Coruña, A	231	4,425	8,077	14.84	16.82	18.36	647
Lugo	126	2,416	4,432	12.18	10.87	16.29	503
Ourense	87	1,476	2,768	17.58	15.01	24.21	258
Pontevedra	195	4,644	8,853	18.43	20.71	21.99	942
Madrid, Comunidad de	492	16,861	32,580	25.63	26.60	31.71	2,176
Murcia, Región de	97	3,832	7,143	21.39	22.93	28.44	691
Navarra, Comunidad Foral de	169	3,657	7,177	14.58	11.89	20.56	655
País Vasco	305	7,551	14,536	18.36	18.48	24.65	1,306
Araba/Álava	45	1,524	2,970	18.48	17.95	26.49	229
Bizcaia	118	3,109	5,999	18.70	16.24	25.25	539
Gipuzkoa	142	2,918	5,567	17.92	21.17	23.05	539
Rioja, La	59	1,240	2,340	14.43	10.70	20.21	258
Ceuta¹	-	-	-	-	-	-	-
Melilla¹	-	-	-	-	-	-	-

¹ The size of the sample in these communities does not facilitate the INE the broken down results, with the objective of maintaining statistical secrecy. Nevertheless, the data corresponding to these communities are included in the national total.

Hotel Price Index (HPI). 2008 Base

June 2020

Provisional data

1. National General Index and breakdown by categories

	Index	Annual growth rate
TOTAL	107.58	-11.07
HOTELS: Gold stars		
Five	81.58	-25.52
Fourth	104.50	-9.83
Three	125.31	-6.84
Two	110.84	-7.43
One	117.43	-6.70
HOSTALS: Silver stars		
Three and two	104.70	-12.08
One	105.83	-10.82

HPI (ANNEX OF TABLES) - JUNE 2020. Provisional data.

Indicators on the Profitability of the Hotel Sector

June 2020

Provisional data

National ADR and RevPar¹ and breakdown by categories

	ADR (in euros)	Annual growth rate	RevPar (in euros)	Annual growth rate
TOTAL	57.93	-37.79	13.16	-80.64
HOTELS: Gold stars				
Five	149.50	-28.03	30.85	-79.98
Four	75.21	-24.71	17.28	-78.64
Three	57.32	-25.12	13.40	-77.16
Two	50.14	-20.97	11.32	-69.67
One	44.90	-25.77	9.56	-70.00
GUESTHOUSES: Silver stars				
Three and two	42.17	-28.23	7.74	-72.05
One	37.67	-25.40	10.03	-59.19

¹ ADR: Average Daily Rate

RevPAR: Revenue per Available Room

Indicators on Profitability (ANNEX OF TABLES) - JUNE 2020. Provisional data.