

**Hotel Tourism Short-Term Trends (HOS/HPI/HII)  
September 2008. Provisional data**

**Overnight stays in hotel establishments decrease 2.8% in  
September as compared with the same month in 2007**

**The interannual rate of hotel prices increases 1.6%**

During the month of September, 29.3 million overnight stays were recorded in hotel establishments, indicating a 2.8% decrease as compared with the same month in 2007. Overnight stays by guests resident in Spain decreased 3.7%, while those by non-residents decreased 2.3%.

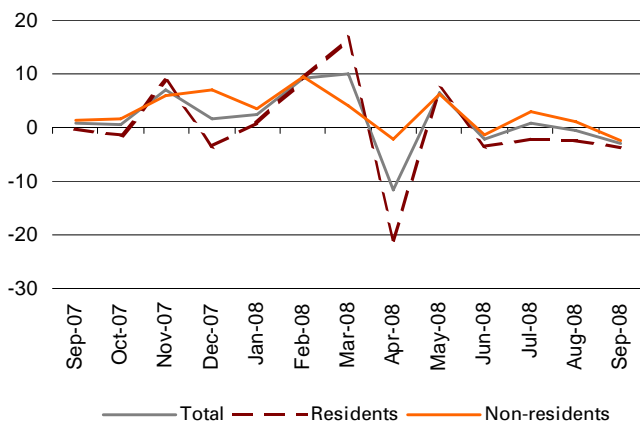
**The average stay grew 0.5%**, in interannual terms, standing at 3.5 nights per guest.

**During the first nine months of the year, 220.5 million overnight stays were registered**, 0.4% more than the same period of the previous year, with a decrease of 1.3% for residents and an increase of 1.7% for non-residents. The **average stay** stood at 3.3 nights per guest, 0.2% more than in the same period in 2007.

On the other hand, the **Hotel Price Index (HPI) registered a growth of 1.6%** in the month of September, with a rate 1.3 points lower than that recorded the same month of 2007.

**During the month of September, 60.3% of the available bedplaces were filled**, 5.8% less than the same month of the previous year. **The weekend occupancy rate by bedplaces was 65.0%**, with an interannual decrease of 3.8%.

Interannual rates of overnight stays in %



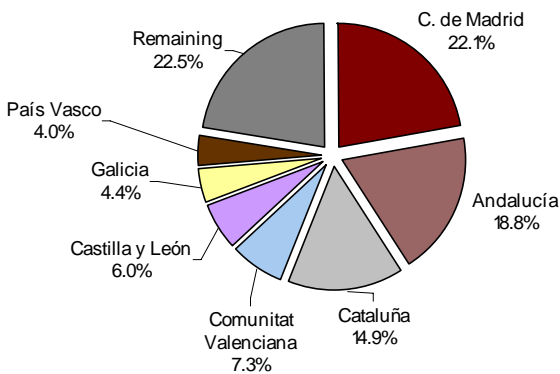
Interannual occupancy rates by bedplaces in %



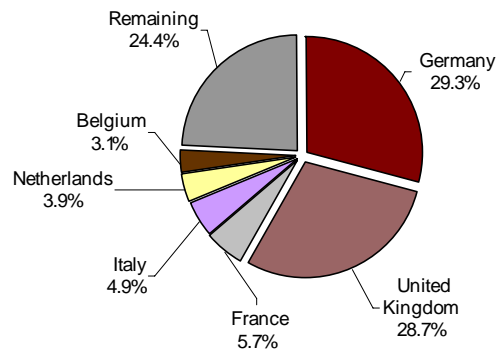
**Overnight stays of German and Britain citizens decrease**

Guests from Germany and the United Kingdom made 10.5 million overnight stays in September, accounting for 58.0% of the total for non-residents. Both markets experienced interannual decreases in overnight stays, 6.5% for the German market and 6.6% for the British market.

**Overnight stays of Spanish guests by Autonomous Community of origin in %**



**Overnight stays of foreign guests by country of origin in %**

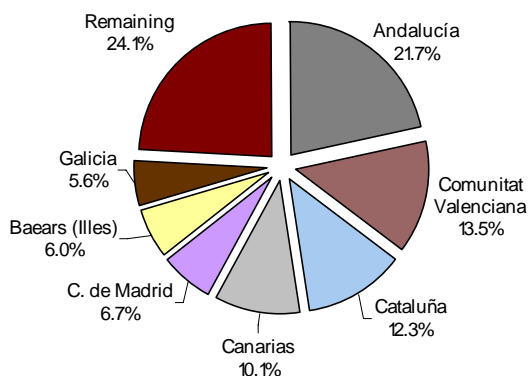


**Illes Balears is the preferred destination for non-resident guests in Spain**

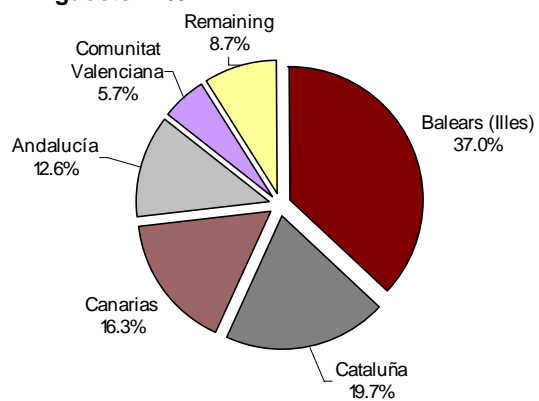
The main destination chosen by non-residents was Illes Balears, the Autonomous Community in which overnight stays by foreign nationals, representing 37.0% of the national total, decreased 5.1% as compared with September 2007. The following main destinations chosen by non-resident guests were Cataluña and Canarias, whose interannual rates were – 3.6% and 0.9%, respectively.

Andalucía, Comunitat Valenciana and Cataluña were the main destinations chosen by residents, with interannual rates for overnight stays of –1.6%, -6.7% and –3.3%, respectively.

**Distribution of overnight stays of Spanish guests in %**



**Distribution of overnight stays of foreign guests in %**



## Illes Balears reaches the highest occupancy rate

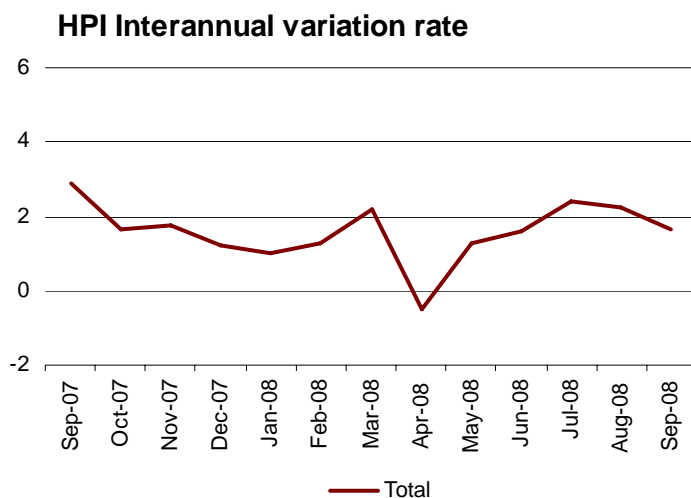
During the month of September, Illes Balears was the Autonomous Community with the highest occupancy rate by bedplaces (75.6%), ahead of Canarias (66.6%) and Comunitat Valenciana (64.2%).

The **tourist areas** with the highest occupancy and overnight stay rates were located on the islands and the coasts. The island of Mallorca reached both the highest occupancy rate by bedplaces (79.2%) and the highest weekend occupancy rate by bedplaces (79.8%). It was also the tourist area with the highest number of overnight stays in September, more than 5.6 million.

The **tourist sites** with the highest number of overnight stays were Madrid, Calviá and Barcelona. Conversely, Santanyi had the highest occupancy rate by bedplaces (90.6%) and Pollença registered the highest weekend occupancy rate (93.1%).

## Hotel prices record an interannual increase of 1.6% in September

The interannual increase in the HPI stood at 1.6% in September, 0.7 points lower than the rate from the previous month, and 1.3 points below the rate registered one year ago.



## Uneven behaviour of prices in the Autonomous Communities

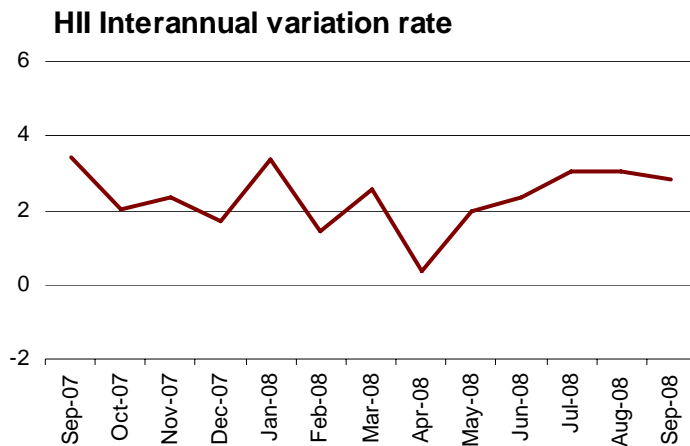
The four Autonomous Communities (Illes Balears, Andalucía, Cataluña and Canarias) which accounted for 67.9% of the total weight of the Hotel Price Index in the month of September, recorded different interannual evolution.

Illes Balears, which carried the greatest load in the weighting structure this month (20.5%), showed an interannual rate of 6.7%, that is, 4.1 points lower than the rate estimated in August (10.8%). In Cataluña, hotel prices experienced an increase of 0.7%, as compared with the 0.8% recorded the previous month. Conversely, Andalucía recorded an interannual rate of -1.7%, as compared with the -3.4% the previous month. In Canarias, the interannual rate was 0.3%, that is, 0.1 points lower than that obtained in August (0.4%).

**The interannual rate of Hotel Income Index increases 2.8% in September**

The Hotel Income Index (HII), which unlike the HPI also considers the variation in the tariff structure, reflected an interannual evolution of income per occupied room of 2.8% in September, 0.6 points lower than the rate recorded the same month the previous year.

The four most important Autonomous Communities in this indicator during this month displayed uneven behaviour in hotel income as compared with September 2007: Illes Balears (7.1%), Cataluña (1.9%), Andalucía (-0.5%) and Canarias (0.1%).



## Methodological note 2008

### Hotel Price Index - Hotel Income Index

As of the year 2000, the INE has published the Hotel Price Index (HPI) and the Hotel Income Index (HII), compiled with the information that hotel businesspersons include in a specific section of the Hotel Occupancy Survey questionnaire.

This part of the questionnaire has not been modified since it was incorporated in said year 2000. Nevertheless, the changes that have taken place in the sector over these past eight years have encouraged the introduction of certain modifications in said section of the questionnaire. With these changes, we hope, on the one hand, **to collect the new distribution channels favoured by generalised Internet use**, and on the other hand, **to adapt the questionnaire to the terms and concepts that are most frequently used within the sector**, as well as the data available in the business management systems themselves.

This improvement will make it possible, **beginning in the year 2009, for the INE to disseminate the whole of the new variables required by the sector, these variables being considered ideal for measuring profitability**: the ADR (Average Daily Rate) and the RevPar (Average income per available room).

Throughout the year 2008, the HPI and the HII will continue to be disseminated, on a national level and by Autonomous Community. However, due to the aforementioned updating of the questionnaires, we will not provide the information on prices and income broken down by rate and by establishment category, granted that in the current format, information is collected referring to the type of client rather than to the rates applied. Thus, for example, the "weekend" and "normal" rates will disappear, to form a joint "individuals" grouping; conversely, in the 2008 questionnaire, information will be collected on the different types of commercialisation, such as "direct online hiring", which was not previously requested.

Beginning in the year 2009, linked series will be offered on the different establishment categories, once sufficient information is available referring to the whole of the year 2008, allowing us to carry out said links with the utmost quality required.

## Tourist Accommodation Occupancy Survey (Hotels and similar establishments)

September 2008

Provisional data

### 1. Travellers, overnight stays and average stay by categories of establishment

Category	Number of travellers			Number of overnight stays			Average stay
	Total	Residents in Spain	Residents abroad	Total	Residents in Spain	Residents abroad	
<b>TOTAL</b>	8.338.528	4.411.450	3.927.078	29.286.215	11.183.806	18.102.409	3,51
<b>HOTELS: Golden stars</b>							
Five	416.167	203.092	213.075	1.151.072	434.201	716.871	2,77
Four	3.266.633	1.713.667	1.552.966	11.455.387	4.354.515	7.100.872	3,51
Three	2.737.140	1.303.897	1.433.243	11.340.937	3.621.374	7.719.563	4,14
Two	727.530	454.104	273.426	2.248.947	1.088.498	1.160.449	3,09
One	281.074	177.803	103.271	724.257	398.309	325.948	2,58
<b>INNS: Silver stars</b>							
Two and three	511.988	330.381	181.608	1.333.457	713.408	620.049	2,60
One	397.996	228.507	169.489	1.032.159	573.501	458.658	2,59
Interannual rate	-3,29	-4,19	-2,25	-2,84	-3,67	-2,32	0,46
Cumulative interannual rate	0,20	-1,07	1,89	0,43	-1,26	1,68	0,22

### 2. Open establishments, capacity, occupancy and employed personnel by categories of establishment

Category	Estimated open establishments	Estimated bedplaces	Level of occupancy			Employed personnel
			Per bedplaces	Per bedplaces at weekend	Per rooms	
<b>TOTAL</b>	16.088	1.591.092	60,27	64,97	64,84	238.775
<b>HOTELS: Golden stars</b>						
Five	224	74.944	50,88	60,28	59,91	25.021
Four	1.786	559.415	67,08	72,51	73,92	100.445
Three	2.761	543.232	67,97	71,35	71,57	73.110
Two	2.031	143.000	51,65	57,34	55,61	15.545
One	1.345	61.840	38,86	43,74	42,68	5.911
<b>INNS: Silver stars</b>						
Two and three	3.204	109.975	40,23	44,32	44,33	10.226
One	4.738	98.687	34,68	37,85	39,10	8.517
Interannual rate	2,67	3,16	-5,81	-3,81	-6,49	0,81

### 3. Travellers, overnight stays, occupancy, average stay and employed personnel

Results by areas and tourist sites

	Travellers		Overnight stays		Level of occupancy			Average stay	Employed personnel
	Residents in Spain	Residents abroad	Residents in Spain	Residents abroad	Per bedplace	Per bedplaces at weekend	Per rooms		
<b>Tourist areas with a greater level of occupancy per month</b>									
Isla de Mallorca	76.008	723.586	375.430	5.249.111	79,17	79,84	80,00	7,03	33.449
Costa del Maresme	28.827	101.766	97.971	689.243	75,53	75,49	77,44	6,03	3.449
Costa Blanca	171.795	128.664	750.007	728.586	73,90	78,77	76,03	4,92	9.829
Costa del Sol	195.741	270.042	574.054	1.176.860	69,49	76,11	76,18	3,76	14.722
Isla de Gran Canaria	60.652	103.373	240.967	836.622	68,68	68,84	75,45	6,57	9.144
Costa Daurada	128.955	139.243	443.262	833.923	68,36	71,50	70,75	4,76	7.137
Costa de Barcelona	132.349	349.119	237.251	826.506	68,01	75,29	76,84	2,21	9.901
Isla de Fuerteventura	25.272	72.448	108.708	569.532	67,77	67,44	74,44	6,94	5.645

#### Tourist areas with a greater number of overnight stays per month \*

Isla de Tenerife	103.789	137.370	506.397	1.180.007	66,50	65,79	69,38	6,99	15.704
Costa Brava	98.390	212.178	272.711	1.050.313	59,08	64,50	62,81	4,26	8.895
Islas de Ibiza-Formentera	44.521	147.785	182.799	1.025.333	66,44	70,25	68,05	6,28	6.779
Costa de la Luz de Cádiz	146.109	75.573	437.000	306.027	63,14	67,70	69,21	3,35	6.838
Isla de Menorca	24.214	50.422	117.204	424.392	64,96	64,17	69,78	7,26	3.441
Isla de Lanzarote	41.084	42.139	224.541	305.338	65,06	65,42	73,85	6,37	4.935
Costa de Almería	108.870	27.611	367.952	131.468	52,62	60,26	62,05	3,66	3.173
Costa de la Luz de Huelva	89.707	21.846	289.452	126.346	60,72	72,24	66,82	3,73	2.923

#### Tourist sites with a greater level of occupancy per month

Santanyi	939	37.112	3.592	314.949	90,60	88,18	87,05	8,37	1.289
Santa Margalida	1.629	40.500	10.035	332.893	90,39	90,26	88,44	8,14	1.696
Pollença	765	12.461	3.590	145.237	89,51	93,10	89,01	11,25	900
Benidorm	70.313	78.421	475.696	568.778	86,98	89,25	86,02	7,02	5.891
Muro	2.586	59.124	13.569	418.354	85,89	77,19	74,58	7,00	2.336
Salines (Ses)	300	10.338	1.109	88.990	85,59	86,93	90,57	8,47	726
Sant Llorenç des Cardassar	2.948	72.861	15.158	540.924	83,27	81,12	83,34	7,34	3.095
Capdepera	1.240	50.666	4.209	388.258	82,55	87,60	90,68	7,56	2.657
Calvià	8.997	159.387	52.380	1.134.650	82,44	80,95	81,81	7,05	7.574
Son Servera	274	24.712	938	218.842	81,83	84,78	83,68	8,80	1.199

#### Tourist sites with a greater number of overnight stays per month \*

Madrid	309.841	318.229	533.503	683.739	56,64	62,46	67,83	1,94	12.501
Barcelona	128.873	348.555	230.649	825.795	68,48	75,88	77,59	2,21	9.803
Palma de Mallorca	40.392	141.730	166.628	756.842	73,31	81,44	78,53	5,07	6.049
San Bartolomé de Tirajana	33.350	76.121	164.927	639.686	74,32	75,00	80,28	7,35	6.755
Salou	44.338	92.505	191.183	601.846	79,76	84,51	84,97	5,80	3.545
Adeje	26.737	62.286	146.350	589.007	69,82	66,73	74,01	8,26	6.875
Lloret De Mar	18.304	96.165	74.595	602.533	72,78	74,17	76,10	5,92	2.971
Torremolinos	43.116	53.375	167.385	312.306	80,71	85,40	86,00	4,97	2.806
Pajara	12.391	50.322	70.586	383.748	73,46	73,04	76,13	7,24	3.614
Alcúdia	3.693	48.958	36.131	396.267	72,49	74,09	75,06	8,21	2.457

\* Not taken into account those included in the preceding table because they are in the bigger level of occupancy tables too.

## 4. Travellers, overnight stays, average stay.

### Results by Autonomos Communities and provinces

Provinces	Number of tr			Overnight stays			Average stay
	Total	Residents in Spain	Residents abroad	Total	Residents in Spain	Residents abroad	
<b>TOTAL</b>	8.338.528	4.411.450	3.927.078	29.286.215	11.183.806	18.102.409	3,51
<b>Andalucía</b>	1.615.824	936.823	679.002	4.714.494	2.428.638	2.285.855	2,92
Almería	144.742	116.262	28.480	526.224	394.370	131.854	3,64
Cádiz	263.189	169.775	93.414	815.240	474.982	340.258	3,10
Córdoba	91.566	54.946	36.620	146.349	92.443	53.907	1,60
Granada	199.279	112.599	86.680	438.569	262.703	175.866	2,20
Huelva	130.990	105.850	25.140	450.172	316.545	133.627	3,44
Jaén	48.150	40.826	7.324	81.710	70.986	10.724	1,70
Málaga	516.668	223.781	292.888	1.851.117	623.135	1.227.982	3,58
Sevilla	221.239	112.783	108.456	405.111	193.474	211.638	1,83
<b>Aragón</b>	239.211	196.133	43.078	481.413	396.020	85.393	2,01
Huesca	69.139	56.018	13.121	153.872	128.664	25.209	2,23
Teruel	35.971	32.332	3.638	66.129	58.430	7.700	1,84
Zaragoza	134.102	107.783	26.319	261.412	208.927	52.485	1,95
<b>Asturias (Principado de)</b>	167.925	143.659	24.267	356.025	306.338	49.687	2,12
<b>Balears (Illes)</b>	1.066.536	144.743	921.793	7.374.269	675.433	6.698.836	6,91
<b>Canarias</b>	614.574	250.637	363.938	4.074.527	1.131.392	2.943.135	6,63
Palmas (Las)	344.969	127.008	217.961	2.285.710	574.217	1.711.493	6,63
Santa Cruz de Tenerife	269.605	123.629	145.977	1.788.817	557.175	1.231.642	6,63
<b>Cantabria</b>	119.944	94.540	25.404	282.726	230.155	52.571	2,36
<b>Castilla y León</b>	455.805	354.500	101.305	754.874	602.926	151.948	1,66
Ávila	32.428	26.986	5.441	52.514	42.352	10.162	1,62
Burgos	77.462	50.525	26.937	124.885	88.347	36.538	1,61
León	79.469	62.280	17.188	120.783	97.070	23.713	1,52
Palencia	23.206	17.140	6.066	41.413	32.258	9.156	1,78
Salamanca	92.935	68.668	24.267	167.091	131.449	35.641	1,80
Segovia	43.690	37.266	6.424	72.834	61.930	10.905	1,67
Soria	19.198	17.025	2.173	36.248	32.052	4.196	1,89
Valladolid	63.116	52.922	10.194	101.663	83.820	17.843	1,61
Zamora	24.302	21.687	2.615	37.443	33.648	3.795	1,54
<b>Castilla-La Mancha</b>	203.848	169.948	33.900	360.314	302.416	57.898	1,77
Albacete	32.171	29.805	2.366	73.840	68.777	5.063	2,30
Ciudad Real	42.278	36.942	5.335	75.522	65.551	9.971	1,79
Cuenca	31.188	26.978	4.210	53.026	45.850	7.176	1,70
Guadalajara	28.947	25.637	3.310	46.443	41.735	4.708	1,60
Toledo	69.265	50.585	18.680	111.484	80.503	30.981	1,61
<b>Cataluña</b>	1.445.841	551.934	893.907	4.938.777	1.378.379	3.560.399	3,42
Barcelona	773.152	252.421	520.731	2.139.855	506.237	1.633.619	2,77
Girona	332.792	113.741	219.052	1.371.607	304.618	1.066.990	4,12
Lleida	71.698	56.817	14.881	150.130	124.262	25.868	2,09
Tarragona	268.199	128.955	139.243	1.277.185	443.262	833.923	4,76
<b>Comunitat Valenciana</b>	701.741	447.849	253.892	2.534.152	1.508.069	1.026.083	3,61
Alicante	314.233	183.096	131.138	1.505.654	769.328	736.326	4,79
Castellón	104.901	82.811	22.091	369.095	306.078	63.017	3,52
Valencia	282.606	181.942	100.664	659.403	432.663	226.740	2,33
<b>Extremadura</b>	101.070	87.696	13.374	188.164	166.678	21.486	1,86
Badajoz	50.712	42.873	7.839	89.797	77.247	12.551	1,77
Cáceres	50.357	44.823	5.534	98.366	89.431	8.935	1,95
<b>Galicia</b>	356.970	271.278	85.692	786.324	628.462	157.862	2,20
Coruña (A)	143.986	101.443	42.542	295.362	217.486	77.876	2,05
Lugo	61.649	44.430	17.219	89.715	68.394	21.321	1,46
Ourense	27.946	23.482	4.463	55.281	47.009	8.272	1,98
Pontevedra	123.390	101.923	21.467	345.966	295.574	50.392	2,80
<b>Madrid (Comunidad de)</b>	798.150	441.848	356.303	1.501.590	744.720	756.870	1,88
<b>Murcia (Región de)</b>	108.001	87.216	20.785	303.559	242.952	60.607	2,81
<b>Navarra (Comunidad Foral de)</b>	78.193	55.149	23.044	147.894	111.185	36.709	1,89
<b>País Vasco</b>	197.132	124.018	73.113	363.975	228.133	135.842	1,85
Álava	27.312	19.624	7.688	48.947	35.703	13.244	1,79
Guipúzcoa	82.257	49.957	32.300	166.345	103.250	63.095	2,02
Vizcaya	87.563	54.437	33.125	148.683	89.180	59.503	1,70
<b>Rioja (La)</b>	57.437	44.197	13.241	98.807	79.355	19.452	1,72
<b>Ceuta</b>	6.642	6.129	513	13.239	12.498	741	1,99
<b>Melilla</b>	3.683	3.156	527	11.093	10.057	1.036	3,01



## 5. Establishment, capacity, occupancy and employed personnel

### Results by Autonomous Communities and provinces

Provinces	Estimated open establishments	Estimated bedplaces	Level of occupancy			Employed personnel
			Per bedplaces	Per bedplaces at weekends	Per rooms	
<b>TOTAL</b>	16.088	1.591.092	60,27	64,97	64,84	238.775
<b>Andalucía</b>	2.541	264.353	58,57	66,11	64,30	41.546
Almería	216	33.352	52,02	59,94	61,01	3.547
Cádiz	492	45.512	58,75	64,60	64,16	8.051
Córdoba	184	9.451	50,89	60,55	56,80	1.656
Granada	395	27.082	53,43	61,73	55,67	3.709
Huelva	168	25.010	56,98	67,11	62,88	3.327
Jaén	191	8.627	31,43	44,86	36,47	1.308
Málaga	584	90.556	67,47	73,97	73,41	16.183
Sevilla	310	24.764	54,11	61,87	61,27	3.766
<b>Aragón</b>	770	36.586	43,52	53,65	50,80	5.168
Huesca	314	14.202	36,01	46,54	40,74	1.780
Teruel	199	6.642	32,97	46,63	35,88	804
Zaragoza	256	15.743	54,74	63,05	65,08	2.584
<b>Asturias (Principado de)</b>	720	26.930	43,77	52,22	48,42	3.470
<b>Balears (Illes)</b>	1.312	316.831	75,56	76,69	76,88	43.670
<b>Canarias</b>	492	201.489	66,58	66,44	71,99	36.573
Palmas (Las)	228	111.036	67,54	67,60	74,77	19.724
Santa Cruz de Tenerife	264	90.453	65,41	65,01	68,60	16.849
<b>Cantabria</b>	460	20.650	45,32	53,21	47,03	2.945
<b>Castilla y León</b>	1.440	59.948	41,78	50,86	46,83	8.319
Ávila	117	5.136	33,93	47,85	36,79	625
Burgos	225	9.062	45,79	47,90	50,82	1.261
León	288	10.701	37,44	46,19	41,48	1.272
Palencia	103	3.653	37,64	38,28	41,79	406
Salamanca	220	10.733	51,58	60,56	53,61	1.601
Segovia	126	5.457	44,23	59,93	50,45	868
Soria	114	3.690	32,64	37,90	35,79	491
Valladolid	147	8.024	42,08	56,78	53,16	1.202
Zamora	100	3.492	35,53	46,63	43,82	593
<b>Castilla-La Mancha</b>	778	31.762	37,64	43,76	43,48	4.217
Albacete	129	5.561	44,12	47,14	49,22	789
Ciudad Real	176	7.171	34,95	41,45	43,18	962
Cuenca	135	4.858	36,30	37,98	39,40	614
Guadalajara	144	5.000	30,84	42,72	39,20	500
Toledo	194	9.173	40,22	47,11	44,72	1.351
<b>Cataluña</b>	2.273	263.967	61,09	65,80	65,97	35.757
Barcelona	939	109.341	64,31	68,93	71,69	17.165
Girona	718	77.764	57,42	62,99	60,90	9.587
Lleida	323	16.431	30,32	37,48	33,13	1.868
Tarragona	292	60.431	68,36	71,50	70,75	7.137
<b>Comunitat Valenciana</b>	1.062	128.039	64,16	69,48	69,33	18.884
Alicante	468	68.472	71,31	76,18	73,40	10.214
Castellón	204	21.386	54,14	61,03	60,86	2.898
Valencia	390	38.182	56,95	62,18	66,54	5.771
<b>Extremadura</b>	369	17.222	36,20	44,61	41,12	2.669
Badajoz	152	8.081	36,87	43,62	41,97	1.307
Cáceres	217	9.141	35,61	45,48	40,36	1.362
<b>Galicia</b>	1.610	67.145	38,82	43,15	43,27	8.732
Coruña (A)	599	24.842	39,51	41,61	45,06	3.032
Lugo	299	8.939	33,24	36,16	35,32	1.061
Ourense	189	6.231	29,34	37,32	36,67	789
Pontevedra	523	27.133	42,21	48,23	45,81	3.850
<b>Madrid (Comunidad de)</b>	1.193	94.166	52,93	59,71	64,10	15.517
<b>Murcia (Región de)</b>	203	19.510	50,85	59,20	53,12	3.199
<b>Navarra (Comunidad Foral de)</b>	259	11.289	43,44	48,50	53,14	1.665
<b>País Vasco</b>	440	23.300	51,65	65,12	63,76	4.478
Álava	74	3.561	45,64	64,41	57,62	812
Guipúzcoa	213	9.204	59,48	71,02	69,25	1.720
Vizcaya	153	10.536	46,85	60,22	61,04	1.947
<b>Rioja (La)</b>	142	6.207	52,82	68,87	59,61	1.068
<b>Ceuta</b>	13	849	51,74	58,77	73,18	740
<b>Melilla</b>	11	848	43,58	43,72	52,68	158

HOS (TABLES ANNEX) - SEPTEMBER 2008 (4/9)

Provisional data

## 6. Percentage distribution of Spanish travellers in each province by Autonomous Community of origin

Results by provinces

(Continued)

Provinces	Total	Andalucía	Aragón	Asturias (P. de)	Balears (Illes)	Canarias	Cantabria	Castilla y León	Castilla-La Mancha	Cataluña
TOTAL	100	18,83	2,66	2,83	1,40	3,06	1,64	5,57	3,47	15,58
Álava	100	7,31	3,68	3,09	0,65	1,12	1,95	8,26	2,66	16,15
Albacete	100	7,57	1,31	1,57	0,79	0,45	0,46	3,97	18,43	8,07
Alicante	100	5,82	2,29	3,04	0,92	0,83	0,92	7,41	6,45	5,23
Almería	100	52,26	0,68	0,59	0,20	0,23	0,51	2,25	4,99	4,71
Asturias	100	9,88	1,37	12,11	0,67	1,81	4,39	9,75	2,94	6,96
Ávila	100	18,03	1,68	3,17	0,46	1,32	2,26	10,88	4,14	5,58
Badajoz	100	26,11	0,92	1,87	0,43	1,70	1,17	5,25	4,13	7,48
Balears (Illes)	100	19,14	1,54	1,41	11,94	1,59	0,43	1,40	2,00	18,72
Barcelona	100	8,20	3,18	1,32	2,56	2,24	1,28	3,29	1,23	40,35
Burgos	100	7,11	2,67	3,58	0,78	0,48	3,59	15,47	3,96	11,90
Cáceres	100	18,26	1,23	2,82	0,38	0,48	3,21	6,08	5,09	7,81
Cádiz	100	50,48	0,99	1,59	0,43	1,15	1,27	3,76	3,11	4,47
Cantabria	100	7,40	3,05	6,19	0,39	1,02	7,81	11,57	3,18	7,41
Castellón	100	5,05	6,64	1,04	0,36	0,49	0,77	6,75	5,14	20,53
Ciudad Real	100	16,55	1,20	4,50	0,38	0,82	1,04	3,43	15,72	8,51
Córdoba	100	47,66	1,26	0,71	0,83	0,84	1,01	2,26	3,27	8,36
Coruña (A)	100	7,94	1,25	5,16	0,81	1,59	1,68	5,71	2,60	9,03
Cuenca	100	15,64	2,57	2,52	0,74	0,73	1,17	6,11	13,03	11,05
Girona	100	3,06	0,99	0,32	0,76	0,24	0,44	1,50	0,42	79,59
Granada	100	51,86	1,17	0,93	0,75	0,86	0,58	2,51	2,29	8,43
Guadalajara	100	8,59	2,97	0,95	0,38	0,80	0,76	4,47	25,88	10,42
Guipúzcoa	100	4,33	3,86	1,88	1,30	1,41	1,65	6,78	1,78	22,72
Huelva	100	58,33	0,39	0,64	0,58	0,64	0,53	3,72	3,78	3,13
Huesca	100	8,51	17,16	2,08	0,65	1,49	1,50	1,95	1,66	29,96
Jaén	100	49,16	0,91	0,58	0,84	0,81	0,38	1,96	4,06	8,05
León	100	5,33	1,91	10,41	0,68	1,37	3,30	18,68	2,56	7,69
Lleida	100	3,08	3,22	0,54	0,88	0,58	0,71	1,34	0,66	71,64
Lugo	100	5,06	1,03	7,85	0,42	1,06	2,77	7,32	2,21	7,26
Madrid	100	15,00	2,65	3,43	1,89	3,29	2,30	4,94	2,87	13,12
Málaga	100	58,30	1,16	1,19	1,05	2,11	0,48	3,85	2,06	4,19
Murcia	100	14,03	1,43	1,40	0,78	0,83	0,74	3,90	4,70	8,74
Navarra	100	6,95	4,89	3,08	1,29	1,56	2,83	7,06	2,42	17,97
Ourense	100	2,54	0,63	5,40	0,20	0,12	0,77	4,37	1,38	3,95
Palencia	100	5,86	1,35	5,31	0,38	0,91	7,03	19,92	2,64	9,40
Palmas (Las)	100	6,12	0,36	1,54	1,48	28,12	0,61	1,34	1,27	7,21
Pontevedra	100	9,11	1,77	7,63	0,56	1,73	1,73	10,04	2,87	7,20
Rioja (La)	100	7,44	5,04	4,95	1,60	1,38	3,31	7,17	3,29	17,23
Salamanca	100	13,18	2,07	6,93	0,78	1,29	3,49	14,07	3,04	5,08
S. C. Tenerife	100	10,83	0,55	1,05	0,95	29,99	0,82	2,63	0,51	4,81
Segovia	100	11,41	2,00	2,88	0,58	1,83	2,13	13,03	4,13	5,25
Sevilla	100	44,88	1,50	1,02	0,71	1,96	0,85	2,61	2,13	7,75
Soria	100	5,17	4,81	3,29	0,34	0,48	1,94	22,55	4,12	11,98
Tarragona	100	3,25	7,33	1,46	0,88	2,63	1,33	2,16	1,42	52,94
Teruel	100	4,35	17,07	1,13	0,78	0,73	0,65	1,65	2,79	20,71
Toledo	100	13,83	2,11	2,33	0,85	0,69	1,34	4,95	16,88	6,76
Valencia	100	9,15	2,39	1,51	2,03	1,27	1,01	4,23	5,88	13,90
Valladolid	100	8,10	2,20	4,58	0,96	1,83	3,86	25,62	2,70	7,93
Vizcaya	100	4,50	3,01	3,59	1,11	1,27	3,07	6,16	2,28	14,52
Zamora	100	6,89	1,64	6,60	0,42	0,51	2,82	15,93	3,05	8,98
Zaragoza	100	7,84	11,20	1,63	1,14	1,09	1,36	6,56	2,91	22,34
Ceuta	100	44,21	0,96	0,48	0,24	0,07	1,20	6,07	1,92	2,85
Melilla	100	69,49	0,77	0,72	1,06	1,17	0,11	0,67	0,90	3,96

## 6. Percentage distribution of Spanish travellers in each province by Autonomous Community of origin

Results by provinces

(Conclusion)

Provinces	Comunitat Valenciana	Extremadura	Galicia	Madrid (C. de)	Murcia (Región de)	Navarra (C. Foral de)	País Vasco	Rioja (La)	Ceuta y Melilla
TOTAL	8,02	2,19	5,25	20,13	2,11	1,30	4,40	0,86	0,68
Álava	4,21	1,01	4,57	19,82	0,85	2,48	20,59	1,05	0,55
Albacete	22,39	1,50	2,46	19,70	7,35	1,57	1,92	0,37	0,11
Alicante	30,56	1,41	1,56	24,65	2,63	1,11	3,23	1,86	0,06
Almería	7,21	0,75	0,46	13,54	9,85	0,20	0,98	0,11	0,48
Asturias	3,62	2,11	12,95	21,65	0,70	1,36	6,88	0,74	0,10
Ávila	5,94	2,47	5,67	30,86	2,39	0,71	3,41	0,84	0,21
Badajoz	4,61	14,54	3,21	22,47	1,86	0,57	3,16	0,32	0,20
Balears (Illes)	8,97	0,39	1,13	19,89	0,62	0,64	1,83	0,20	8,17
Barcelona	6,18	0,76	2,58	16,76	1,43	1,65	4,31	0,83	1,84
Burgos	5,66	0,97	7,36	23,31	1,53	2,16	8,46	1,01	0,01
Cáceres	4,48	14,16	3,86	26,13	0,74	0,86	3,66	0,60	0,15
Cádiz	3,48	4,64	1,90	16,37	1,11	0,61	2,87	0,48	1,29
Cantabria	5,47	1,46	6,93	21,00	1,25	1,96	12,02	1,84	0,06
Castellón	22,57	0,78	1,16	22,46	1,03	1,75	2,27	1,19	0,02
Ciudad Real	8,32	2,53	1,70	27,11	2,51	1,09	3,98	0,47	0,14
Córdoba	4,87	2,23	1,80	20,45	1,58	0,69	1,69	0,42	0,07
Coruña (A)	4,11	1,59	32,57	19,47	1,14	0,57	4,20	0,48	0,10
Cuenca	14,60	2,15	3,35	19,55	3,00	0,91	2,43	0,31	0,15
Girona	2,47	0,29	1,25	5,36	0,62	0,41	1,83	0,32	0,13
Granada	6,59	1,47	1,87	14,12	3,39	0,51	1,60	0,32	0,75
Guadalajara	8,57	2,40	4,01	24,30	1,07	1,36	2,41	0,62	0,03
Guipúzcoa	4,30	1,17	4,63	18,13	0,68	3,72	20,16	1,36	0,15
Huelva	1,25	11,54	1,65	10,92	0,75	0,16	1,67	0,12	0,20
Huesca	6,40	1,32	1,62	17,84	0,95	1,98	4,01	0,85	0,07
Jaén	7,24	1,00	1,14	16,21	5,37	0,32	1,23	0,26	0,47
León	4,20	1,51	12,54	20,13	1,27	1,65	5,84	0,84	0,08
Lleida	4,23	0,55	0,86	8,35	0,25	0,74	2,06	0,25	0,06
Lugo	3,51	0,82	39,77	14,34	0,64	1,08	4,13	0,61	0,12
Madrid	9,77	2,68	5,24	21,28	2,95	1,73	5,17	1,21	0,48
Málaga	2,88	3,17	1,02	14,26	1,10	0,28	1,57	0,21	1,13
Murcia	18,40	1,18	1,94	22,95	16,34	0,55	1,65	0,19	0,24
Navarra	5,92	1,28	3,02	18,46	1,40	8,26	12,45	1,00	0,16
Ourense	2,59	0,57	59,25	14,92	0,72	0,43	1,69	0,32	0,14
Palencia	4,71	1,97	6,89	20,56	0,86	1,39	9,59	1,18	0,06
Palmas (Las)	1,71	0,29	2,45	41,98	1,14	1,53	2,54	0,20	0,11
Pontevedra	3,65	2,07	27,90	16,11	0,82	1,01	4,83	0,87	0,12
Rioja (La)	5,78	0,68	5,76	15,04	0,88	2,68	13,33	4,28	0,16
Salamanca	4,19	4,51	6,07	24,38	1,35	1,96	6,31	1,20	0,12
S. C. Tenerife	1,79	0,83	2,37	38,91	0,60	0,35	2,70	0,24	0,06
Segovia	6,89	2,75	3,42	35,88	2,38	1,12	3,38	0,76	0,19
Sevilla	4,61	2,51	1,94	21,91	1,46	0,82	2,37	0,55	0,42
Soria	3,92	2,66	4,00	23,56	0,80	3,42	6,20	0,72	0,05
Tarragona	5,74	0,69	0,90	8,67	0,84	2,49	4,44	2,66	0,18
Teruel	26,62	0,96	0,99	13,73	1,98	1,72	3,13	0,95	0,07
Toledo	7,98	3,31	3,70	24,89	2,83	1,14	5,18	0,83	0,41
Valencia	22,91	1,08	2,29	24,53	2,82	1,04	2,61	0,95	0,40
Valladolid	3,86	1,60	7,80	21,82	0,98	1,17	4,37	0,50	0,10
Vizcaya	3,73	1,11	4,36	22,27	1,33	2,98	23,67	1,02	0,02
Zamora	3,95	3,27	12,70	23,25	1,06	2,52	5,60	0,30	0,53
Zaragoza	7,07	1,18	3,10	20,95	1,17	2,00	5,21	2,95	0,31
Ceuta	7,11	0,48	0,36	22,20	1,44	-	1,70	-	8,68
Melilla	2,87	0,47	0,00	10,64	0,83	0,45	1,48	1,23	3,18

## 7. Percentage distribution of overnight stays in each province by Autonomous Community of origin

Results by provinces

(Continued)

Provinces	Total	Andalucía	Aragón	Asturias (P. de)	Balears (Illes)	Canarias	Cantabria	Castilla y León	Castilla-La Mancha	Cataluña
TOTAL	100	18,84	2,75	2,85	1,45	3,20	1,39	5,95	3,70	14,89
Álava	100	8,48	3,55	2,83	0,54	0,78	1,96	8,91	2,36	17,58
Albacete	100	9,65	0,77	1,23	0,54	0,29	0,38	4,60	23,00	7,09
Alicante	100	4,97	2,55	5,40	0,63	0,52	1,60	11,78	7,12	3,50
Almería	100	55,83	0,56	0,87	0,15	0,18	0,42	3,17	5,26	4,10
Asturias	100	12,61	1,33	9,71	0,92	1,77	3,09	9,50	3,19	7,90
Ávila	100	16,05	1,63	3,12	0,49	1,17	2,01	11,92	3,64	6,57
Badajoz	100	25,91	0,96	1,74	0,58	1,17	0,94	4,20	3,52	8,33
Balears (Illes)	100	18,17	1,66	1,73	9,97	1,65	0,44	1,65	1,62	17,84
Barcelona	100	9,43	2,87	1,33	2,25	2,19	1,29	3,92	1,24	41,62
Burgos	100	7,00	2,61	3,26	0,61	0,40	3,46	19,31	3,50	11,28
Cáceres	100	16,25	0,92	2,16	0,31	0,35	3,11	4,94	4,84	10,66
Cádiz	100	49,63	0,98	1,64	0,46	0,97	0,75	5,54	3,30	3,49
Cantabria	100	9,18	3,85	5,03	0,33	1,61	6,15	11,71	3,66	7,65
Castellón	100	3,05	7,94	1,10	0,19	0,26	0,75	8,74	5,38	17,02
Ciudad Real	100	15,82	1,02	4,63	0,31	0,74	1,08	3,03	16,18	9,36
Córdoba	100	46,08	1,64	0,74	0,61	0,80	0,87	2,43	3,49	9,76
Coruña (A)	100	9,34	1,53	5,18	0,87	1,96	1,43	5,48	4,86	8,20
Cuenca	100	14,41	1,98	2,22	0,57	0,73	1,08	5,35	13,45	13,71
Girona	100	4,32	1,53	0,52	0,96	0,21	0,56	2,40	0,57	72,83
Granada	100	48,75	1,35	1,01	0,70	0,92	0,61	2,99	3,90	8,53
Guadalajara	100	8,15	3,17	1,09	0,29	1,18	0,76	5,35	25,88	8,92
Guipúzcoa	100	5,08	3,93	1,77	0,95	1,45	1,34	7,15	1,84	23,91
Huelva	100	51,86	0,55	0,87	0,43	0,39	0,52	5,17	5,69	2,94
Huesca	100	8,91	19,40	3,65	0,72	2,37	1,96	1,85	1,49	28,61
Jaén	100	49,35	0,78	0,70	0,83	0,79	0,34	1,79	4,22	8,24
León	100	5,30	1,75	10,58	0,79	1,38	3,28	20,16	2,54	7,14
Lleida	100	3,26	2,74	0,61	1,00	0,50	0,50	0,94	1,13	70,28
Lugo	100	4,62	0,96	8,20	0,33	0,78	2,64	7,26	2,46	6,52
Madrid	100	15,32	2,70	3,41	1,90	3,86	2,20	5,20	2,79	13,82
Málaga	100	54,78	1,63	1,17	0,84	2,53	0,44	5,29	2,43	3,56
Murcia	100	15,32	1,32	1,43	0,60	0,94	0,80	5,76	5,36	7,42
Navarra	100	7,62	5,16	2,69	1,62	1,68	2,53	5,71	2,36	18,34
Ourense	100	2,50	0,46	4,50	0,19	0,25	0,59	5,84	1,09	3,48
Palencia	100	12,34	0,92	6,52	0,31	0,77	6,14	20,20	4,06	6,85
Palmas (Las)	100	6,60	0,51	1,86	1,30	18,63	0,52	1,47	1,42	9,55
Pontevedra	100	11,06	1,98	8,50	1,06	2,05	2,56	10,30	2,79	7,08
Rioja (La)	100	12,10	4,79	5,01	1,53	1,29	3,08	6,94	3,73	16,86
Salamanca	100	10,71	2,11	14,61	0,68	1,21	2,90	15,78	2,67	5,21
S. C. Tenerife	100	12,10	0,76	1,32	0,83	18,66	0,99	4,40	0,76	5,95
Segovia	100	11,67	1,81	3,78	0,48	3,47	2,29	11,78	4,32	4,94
Sevilla	100	41,47	1,63	1,10	0,82	2,14	0,99	2,70	2,16	9,28
Soria	100	4,74	5,11	4,34	0,32	0,45	1,46	26,21	4,04	10,59
Tarragona	100	2,90	9,12	2,01	0,75	1,33	1,49	2,97	1,63	50,36
Teruel	100	4,58	17,64	1,36	0,89	0,76	0,59	1,38	2,95	21,08
Toledo	100	13,19	2,17	2,09	0,65	0,72	1,25	5,01	16,34	7,00
Valencia	100	8,22	2,07	1,78	1,22	1,68	1,12	5,17	7,96	10,40
Valladolid	100	9,48	1,83	4,28	0,84	2,94	3,71	22,59	3,27	8,08
Vizcaya	100	5,27	2,80	3,26	0,99	1,65	2,41	5,99	2,16	16,32
Zamora	100	6,03	1,40	5,40	0,36	0,39	3,01	17,84	4,30	13,36
Zaragoza	100	8,54	12,86	1,43	1,09	1,16	1,20	6,46	3,19	21,12
Ceuta	100	45,76	0,90	0,25	0,10	0,03	1,40	9,41	1,75	2,75
Melilla	100	68,30	1,40	0,83	0,55	1,21	0,75	0,62	0,91	5,12

## 7. Percentage distribution of overnight stays in each province by Autonomous Community of origin

Results by provinces

(Conclusion)

Provinces	Comunitat Valenciana	Extremadura	Galicia	Madrid (C. de)	Murcia (Región de)	Navarra (C. Foral de )	País Vasco	Rioja (La)	Ceuta y Melilla
TOTAL	7,27	2,34	4,44	22,09	1,76	1,26	4,01	0,85	0,97
Álava	3,85	0,81	6,00	19,13	0,82	2,45	18,10	1,11	0,76
Albacete	20,16	1,00	1,93	19,85	6,67	1,09	1,43	0,21	0,10
Alicante	18,56	2,35	1,87	30,09	1,30	1,66	4,05	2,02	0,03
Almería	4,64	0,83	0,50	14,55	7,28	0,27	0,88	0,16	0,35
Asturias	4,32	2,11	10,90	22,66	1,39	1,60	5,88	1,03	0,10
Ávila	5,64	2,23	6,10	31,88	2,44	0,64	3,38	0,80	0,29
Badajoz	6,79	16,90	2,94	19,73	2,23	0,47	3,04	0,37	0,16
Balears (Illes)	8,35	0,40	1,63	20,48	0,41	0,45	2,14	0,24	11,17
Barcelona	5,74	0,75	2,80	15,27	1,19	1,39	4,41	0,70	1,64
Burgos	6,97	0,90	7,71	21,34	1,43	1,86	7,15	1,15	0,08
Cáceres	5,31	18,41	3,57	23,68	0,73	0,71	3,49	0,45	0,10
Cádiz	2,48	5,26	1,32	18,48	0,77	0,61	3,21	0,36	0,76
Cantabria	8,11	1,99	4,78	21,86	1,03	1,95	9,19	1,88	0,05
Castellón	16,32	1,43	0,91	28,89	0,57	2,17	3,48	1,78	0,02
Ciudad Real	9,30	2,61	1,56	26,20	2,51	0,71	4,45	0,42	0,08
Córdoba	4,95	2,31	1,95	20,08	1,63	0,72	1,56	0,33	0,05
Coruña (A)	4,03	1,83	29,67	18,92	1,15	0,59	4,37	0,50	0,09
Cuenca	14,24	2,86	3,44	19,22	3,14	0,91	2,28	0,32	0,09
Girona	2,69	0,21	1,60	6,86	0,67	0,48	2,93	0,56	0,09
Granada	6,59	2,10	1,73	14,99	2,83	0,42	1,64	0,44	0,50
Guadalajara	8,69	3,82	5,00	23,14	1,07	1,48	1,55	0,40	0,06
Guipúzcoa	4,83	0,97	4,62	18,72	0,73	3,58	17,19	1,84	0,08
Huelva	1,30	13,21	1,56	12,73	0,50	0,19	1,77	0,13	0,20
Huesca	7,84	1,00	1,48	13,80	0,75	1,85	3,48	0,78	0,08
Jaén	8,41	1,10	1,10	14,52	5,65	0,33	1,21	0,24	0,42
León	5,10	1,60	11,85	19,12	1,35	1,59	5,65	0,71	0,10
Lleida	6,85	0,70	0,82	7,00	0,41	0,81	2,04	0,38	0,04
Lugo	3,02	0,77	40,42	16,23	0,76	0,74	3,62	0,57	0,08
Madrid	9,45	2,40	5,97	20,11	2,90	1,72	4,77	1,05	0,44
Málaga	2,18	4,87	1,27	14,75	1,13	0,38	1,72	0,25	0,78
Murcia	13,99	1,34	1,99	29,61	11,63	0,56	1,44	0,19	0,27
Navarra	4,92	1,27	3,05	16,64	1,30	8,57	15,28	1,18	0,09
Ourense	2,99	0,91	61,00	14,06	0,42	0,27	1,21	0,15	0,11
Palencia	4,21	1,85	7,14	17,63	0,91	1,20	7,84	1,04	0,03
Palmas (Las)	1,67	0,33	2,69	47,43	1,11	1,84	2,92	0,11	0,05
Pontevedra	4,65	2,60	22,59	14,66	1,28	0,93	4,92	0,89	0,10
Rioja (La)	6,06	0,67	4,62	13,74	0,79	2,94	12,29	3,47	0,09
Salamanca	3,97	4,02	5,05	20,80	1,35	1,39	6,62	0,82	0,10
S. C. Tenerife	1,99	0,81	2,90	43,37	0,54	0,48	3,71	0,37	0,04
Segovia	5,95	2,80	2,91	36,09	2,56	1,02	3,33	0,63	0,18
Sevilla	5,11	2,05	2,30	22,40	1,49	0,75	2,73	0,54	0,34
Soria	4,17	2,79	3,74	22,66	0,75	2,51	5,34	0,74	0,03
Tarragona	4,16	0,45	1,14	9,98	0,85	3,28	4,87	2,63	0,09
Teruel	26,67	0,86	1,10	12,29	1,92	1,56	3,47	0,76	0,14
Toledo	8,76	3,18	4,78	24,86	2,89	0,99	5,02	0,68	0,43
Valencia	21,19	1,05	2,36	28,56	2,32	0,73	2,78	1,08	0,31
Valladolid	4,07	1,61	8,07	21,62	1,13	1,34	4,51	0,52	0,09
Vizcaya	4,27	1,29	5,18	22,29	1,14	2,81	21,21	0,91	0,04
Zamora	3,39	3,57	12,33	20,41	0,72	2,04	4,92	0,24	0,28
Zaragoza	6,91	1,23	3,47	20,95	1,08	2,17	4,40	2,44	0,31
Ceuta	8,26	0,20	0,20	17,80	1,35	-	2,02	-	7,82
Melilla	6,19	1,10	0,17	6,11	0,34	0,33	1,37	0,58	4,10

## 8. Travellers, overnight stays and average stay by country of residence

### Results by countries

Countries	Number of travellers		Overnight stays	
	Total	%	Total	%
TOTAL	8.338.528	100,00	29.286.215	100,00
Residents in Spain	4.411.450	52,90	11.183.806	38,19
Residents abroad	3.927.078	47,10	18.102.409	61,81
Total Residents in Spain	3.927.078	100,00	18.102.409	100,00
Total Residents in U.E. (without Spain)	3.093.056	78,76	15.643.508	86,42
- Germany	833.345	21,22	5.296.096	29,26
- Austria	34.928	0,89	130.915	0,72
- Belgium	109.986	2,80	554.736	3,06
- Denmark	37.434	0,95	175.152	0,97
- Finland	16.392	0,42	52.705	0,29
- France	356.209	9,07	1.024.754	5,66
- Greece	14.137	0,36	31.738	0,18
- Ireland	75.443	1,92	323.519	1,79
- Italy	226.864	5,78	879.316	4,86
- Luxembourg	7.208	0,18	38.602	0,21
- Netherlands	154.974	3,95	699.320	3,86
- Poland	50.501	1,29	269.124	1,49
- Portugal	126.736	3,23	362.024	2,00
- United Kingdom	903.678	23,01	5.206.762	28,76
- Czech Republic	21.325	0,54	117.921	0,65
- Sweden	62.607	1,59	271.620	1,50
- Rest of UE*	61.290	1,56	209.203	1,16
Norway	37.604	0,96	146.228	0,81
Russia	82.454	2,10	542.096	2,99
Switzerland	79.417	2,02	365.141	2,02
Rest of Europe	71.664	1,82	213.029	1,18
Japan	48.883	1,24	82.134	0,45
United States of America	146.257	3,72	319.790	1,77
Rest of America	188.680	4,80	411.616	2,27
African's countries	22.479	0,57	49.109	0,27
Rest of the world	156.585	3,99	329.758	1,82

\*Countries included in the Rest of UE: Bulgaria, Cyprus, Slovakia, Slovenia, Esthonia, Hungary, Latvia, Lithuania, Malta and Romania

## Hotel Price Index (HPI)

September 2008

Provisional data

### General Autonomous Communities and national indices

September	Index	Interannual variation rate
<b>TOTAL</b>	<b>121,0</b>	<b>1,6</b>
Andalucía	124,0	-1,7
Aragón	142,9	7,0
Asturias (Principado de)	116,6	0,3
Balears (Illes)	135,5	6,7
Canarias	103,7	0,3
Cantabria	119,3	2,7
Castilla y León	116,1	-1,0
Castilla-La Mancha	129,3	0,8
Cataluña	118,2	0,7
Comunitat Valenciana	123,7	2,9
Extremadura	118,7	-1,1
Galicia	120,8	0,1
Madrid (Comunidad de)	116,1	0,5
Murcia (Región de)	123,5	1,0
Navarra (Comunidad Foral de)	124,4	0,3
País Vasco	125,3	-1,1
Rioja (La)	122,5	1,5
Ceuta	129,8	7,7
Melilla	98,0	12,9

HPI (ANNEX OF TABLES) - September 2008

23rd October 2008

## HOTEL INCOME INDEX (HII)

**September 2008**

Provisional data

### General Autonomous Communities and national indices

	Index	Interannual variation rate
<b>TOTAL</b>	<b>124,6</b>	<b>2,8</b>
Andalucía	127,5	-0,5
Aragón	146,4	6,7
Asturias (Principado de)	125,0	2,0
Balears (Illes)	134,9	7,1
Canarias	102,5	0,1
Cantabria	120,2	5,4
Castilla y León	131,8	-1,3
Castilla-La Mancha	131,4	1,1
Cataluña	119,1	1,9
Comunitat Valenciana	134,8	3,9
Extremadura	130,6	3,1
Galicia	127,5	0,4
Madrid (Comunidad de)	134,2	1,9
Murcia (Región de)	119,9	0,6
Navarra (Comunidad Foral de)	129,2	2,0
País Vasco	122,4	-0,3
Rioja (La)	130,3	3,1
Ceuta	128,8	6,0
Melilla	134,4	1,1