

28 December 2010

## University Entrance Exams Year 2010

**244,737 students register in 2010, that is, 6.3% more than last year**

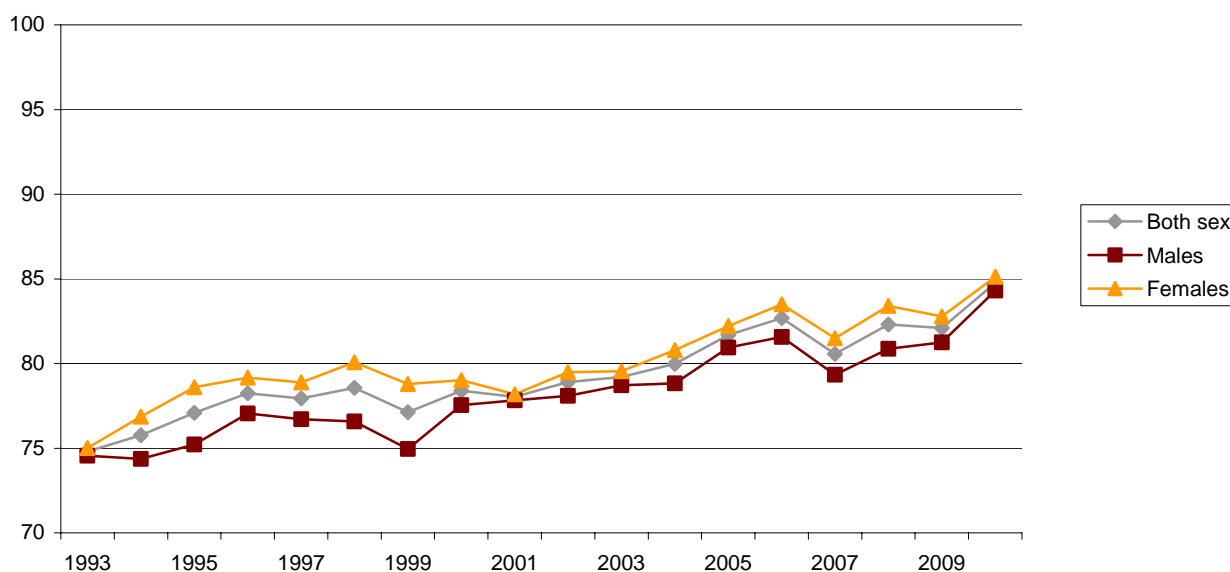
**84.8% of the registered students pass, 2.7 points higher than in 2009**

The new University Entrance Exams (PAU), implemented this year, consists of two phases, a general phase and a specific one. A total of 244,737 took the exam in 2010, with a 6.3% increase as compared with the previous year. Of the total enrolled, 55.7% were females, who obtained a percentage of passes slightly higher than for males (85.1% as compared with 84.3%).

165,170 students enrolled for the June examination session, and 93.1% passed the tests (as compared with the 90.7% from last year). At the September session, 74.3% of the 43,130 registered passed. In turn, in the entrance exams for persons over 25 years old, 31,033 students enrolled, 18.7% more than the previous year, and 60.0% passed.

In 2010, entrance exams for persons over 45 years old were also implemented, in which 5,404 students enrolled; of them, 57.2% passed.

### Evolution of the rate of students passing over students registered, by sex



## Student body taking PAU and percentage of passes, by session and sex. Year 2010

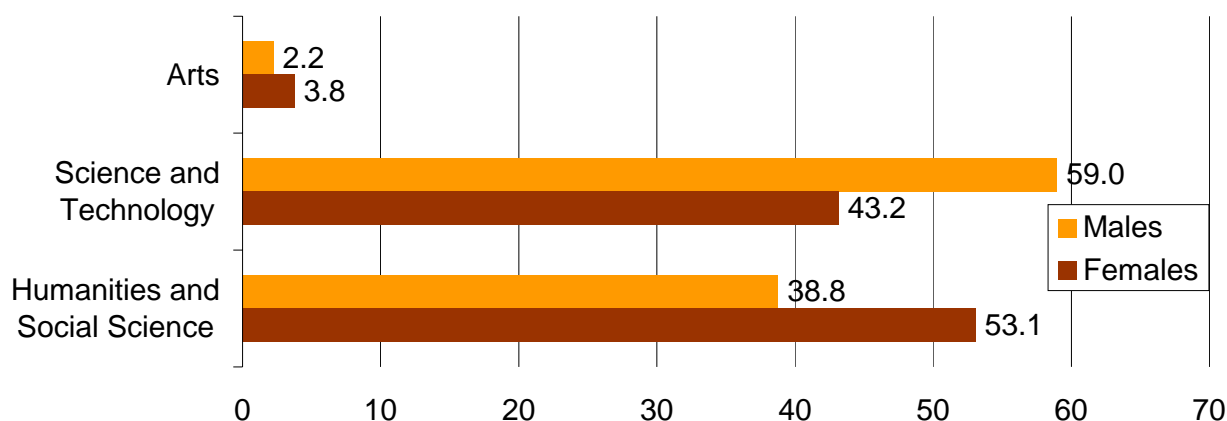
	Student body			Percentage of passes		
	Total	Males	Females	Total	Males	Females
<b>General phase</b>						
Total	244,737	108,378	136,359	84.77	84.32	85.13
June	165,170	69,754	95,416	93.08	93.43	92.82
September	43,130	20,303	22,827	74.25	75.88	72.80
Persons over 25 year:	31,033	16,139	14,894	59.96	59.87	60.06
Over 45 years of age	5,404	2,182	3,222	57.20	52.20	60.58
<b>Specific phase</b>						
Total	190,671	80,243	110,428	69.81	70.08	69.61
June	153,240	63,366	89,874	74.40	75.21	73.83
September	37,431	16,877	20,554	51.01	50.82	51.17

## Student body enrolled by option

Excluding both exams for those aged over 25 years old and exams for those aged over 45 years old, in the general phase 50.0% of the student body opted for the option *Science and Technology*, and 46.9% for that of *Humanities and Social Sciences*. The option with the least weight was *Arts*, with 3.1%.

Regarding preferences by sex, 53.1% of females chose the option *Humanities and Social Sciences*, whereas 43.2% opted for *Science and Technology*. In the case of males, 59.0% took exams for the option *Science and Technology*, whereas 38.8% chose *Humanities and Social Sciences*.

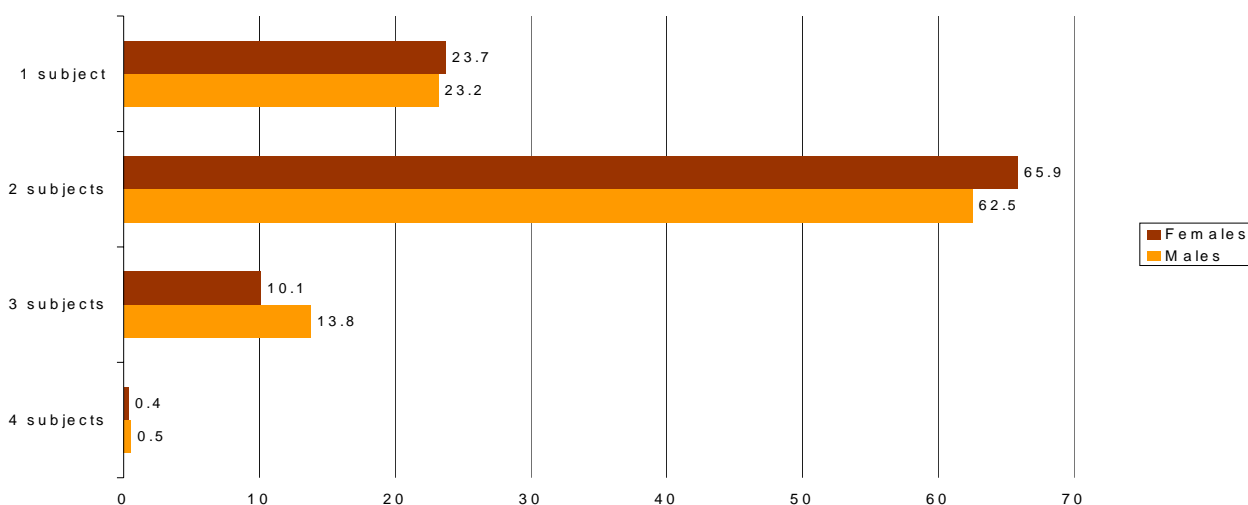
## Percentage of students registered, by Option and sex



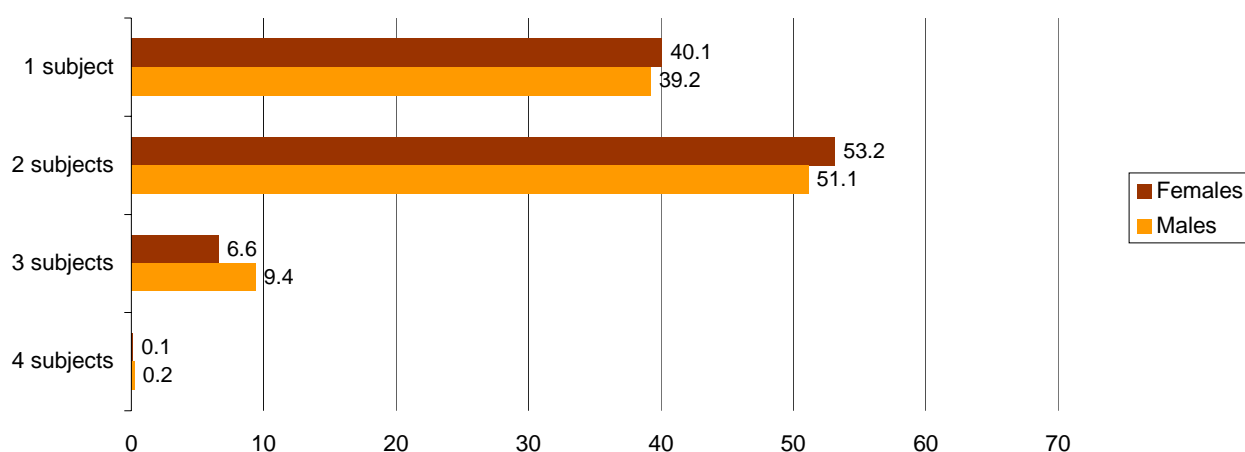
## Specific phase

In the year of implementation of the new University Entrance Exam, 190,671 students took the specific phase. Of these, 80.4% did so at the June examination session. Of the four subjects that may be taken, 87.9% opted to take exams in one or two of these. 69.8% of students passed the exam in one of the subjects taken (70.1% for men and 69.6% for women).

Percentage of the student body taking the specific phase by number of subjects and sex



Percentage of the student body taking the specific phase by number of subjects and sex



## Methodological note

University Entrance Exams Statistics are an exhaustive investigation aimed at universities holding said exams. They are carried out annually.

The main objective was to provide data on the student body enrolled and passing these exams, as well as their most relevant features (sex, university and option).

This year, entrance exams have been modified as compared with previous years, having been structured into two phases:

- general phase, compulsory in nature, whose purpose is to evaluate the maturity and basic skills that the student must attain on completing the Post-Secondary Education in order to go on to official Degree-level university education
- specific phase, which is voluntary, whose purpose is to assess knowledge and reasoning ability in specific disciplines related to the intended study path. This makes it possible to improve the grade obtained in the general phase in order to embark on the chosen field of study.