

5 December 2012

Employment of Persons with Disabilities¹

Use of the Economically Active Population Survey and the State Database of Persons with Disabilities.
Year 2011

Main results

- According to the State Database of Persons with Disabilities, 1,262,000 persons aged 16 to 64 years old and resident in households certify disabilities in 2011. This figure represents 4.1% of the population of working age registered in said Database, and shows a 7.7% increase as compared with the year 2010.
- 36.6% of persons with legally recognised disabilities are economically active in 2011. This economic activity rate is almost 40 points lower than that of the population without disabilities (76.4%).
- The unemployment rate for the group is 26.9% in 2011, more than five points higher than the population without disabilities.
- The employment rate of persons with certified disabilities stands at 26.7%. 89.0% of employed persons are wage earners, and 76.9% of them have a permanent contract.
- 25.7% of the employed persons with disabilities working in ordinary centres have some deduction in their Social Security contributions, and 26.5% have a specific disability contract.

Employment of Persons with Disabilities uses the information derived from an integration of the statistical data provided by the Economically Active Population Survey (EAPS) with the administrative data registered in the State Database of Persons with Disabilities (BEPD). It also includes data regarding measures for encouraging employment from the General Social Security Treasury (TGSS), information regarding the receipt of benefits from the Register of Public Social Benefits of the National Social Security Institute (INSS), and data regarding dependency from the System for the Autonomy of and Support for Dependent Persons (SAAD).

All results refer to the population aged 16 to 64 years old.

¹These are the persons who have a degree of disability greater than or equal to 33%, according to the assessment procedure established by Royal Decree 1971/1999, amended by Royal Decree 1364/2012.

Characteristics of the economically active population with disabilities

In 2011, there were a total of 1,262,000 persons of working age (16 to 64 years old) with certified disabilities, accounting for 4.1% of the total population of working age.

The following sections in this press release analyse the labour situation of those persons with disabilities who participate in the labour market (economically active), comparing this with the rest of the population. Given that this comparison may influence personal characteristics other than the disabilities, we first provide an overview of the said characteristics of economically active persons, with and without disabilities.

Among the economically active population with disabilities, a higher percentage of men was observed, as well as greater weight in the group aged 45 to 64 years old, and less representation of those persons with higher education, than in the economically active population without disabilities. The latter could cause a difference in the labour situation, especially in the unemployment rate, between the two populations.

Economically active persons, by disability. Year 2011. Absolute values in thousands.

	Total		Persons without disabilities		Persons with disabilities	
	Absolute values	Percent-ages	Absolute values	Percent-ages	Absolute values	Percent-ages
TOTAL	22,949.2	100.0	22,487.6	100.0	461.6	100.0
SEX						
Men	12,595.5	54.9	12,323.3	54.8	272.2	59.0
Women	10,353.7	45.1	10,164.3	45.2	189.5	41.0
AGE GROUPS						
16-24	1,923.1	8.4	1,896.7	8.4	26.4	5.7
25-34	6,169.1	26.9	6,090.4	27.1	78.7	17.0
35-44	6,805.0	29.7	6,678.9	29.7	126.1	27.3
45-54	5,387.4	23.5	5,246.6	23.3	140.8	30.5
55-64	2,664.7	11.6	2,574.9	11.5	89.7	19.4
EDUCATIONAL LEVEL						
Illiterate persons	102.6	0.4	96.5	0.4	6.1	1.3
Primary education	2,921.1	12.7	2,826.1	12.6	95.0	20.6
Secondary education and training and labour insertion programmes	12,126.1	52.8	11,871.3	52.8	254.8	55.2
Higher education, including doctorates	7,799.4	34.0	7,693.7	34.2	105.7	22.9

Moving on to the first component of the economically active persons with disabilities, the employed population, similar characteristics were observed therein regarding sex, age and educational level as compared with those recorded for the economically active persons without disabilities. The distribution according to the seniority in the job post of the employed persons with disabilities was very similar to that accounted for by the remaining employed persons, with the only difference of the percentage of employed persons in the "three years and over" bracket of seniority in the job being slightly higher, and the percentage being slightly lower in the "less than six months" bracket.

Employed persons, by disability. Year 2011. Absolute values in thousands.

	Total		Persons without disabilities		Persons with disabilities	
	Absolute values	Percent-ages	Absolute values	Percent-ages	Absolute values	Percent-ages
TOTAL	17,953.3	100.0	17,616.1	100.0	337.3	337.3
SEX						
Men	9,907.6	55.2	9,707.4	55.1	200.2	59.4
Women	8,045.8	44.8	7,908.7	44.9	137.1	40.6
AGE GROUPS						
16-24	1,030.4	5.7	1,019.3	5.8	11.1	3.3
25-34	4,683.1	26.1	4,631.6	26.3	51.5	15.3
35-44	5,509.1	30.7	5,416.2	30.7	93.0	27.6
45-54	4,466.1	24.9	4,359.0	24.7	107.1	31.8
55-64	2,264.6	12.6	2,190.0	12.4	74.6	22.1
EDUCATIONAL LEVEL						
Illiterate persons	48.5	0.3	44.1	0.3	4.4	1.3
Primary education	1,970.7	11.0	1,907.7	10.8	63.0	18.7
Secondary education and training and labour insertion programmes	9,125.3	50.8	8,946.5	50.8	178.8	53.0
Higher education, including doctorates	6,808.9	37.9	6,717.8	38.1	91.1	27.0
DURATION OF THE CONTRACT						
- Less than 6 months	1,767.4	9.8	1,738.3	9.9	29.1	8.6
- 6 months to 1 year	969.9	5.4	948.8	5.4	21.1	6.3
- 1 to 3 years	2,460.2	13.7	2,416.2	13.7	44.0	13.0
- More than 3 years	12,755.9	71.1	12,512.9	71.0	243.0	72.1

Regarding the branches of activity, employed persons with disabilities had more representation in the following branches: "Health and social services activities", "Administrative and support services activities", "Public Administration and Defence, compulsory Social Security" and "Extractive and Manufacturing Industries".

Employed persons, by disability and branch of activity. Year 2011. Absolute values in thousands.

	Total		Persons without disabilities		Persons with disabilities	
	Absolute values	Percent-ages	Absolute values	Percent-ages	Absolute values	Percent-ages
TOTAL	17,953.3	100.0	17,616.1	100.0	337.3	100.0
Agriculture, livestock breeding, forestry and fishing	748.3	4.2	742.1	4.2	6.1	1.8
Extractive and manufacturing industries	2,335.8	13.0	2,301.4	13.1	34.4	10.2
Supply of electrical energy, gas, steam and air conditioning, water, sewerage, waste management and remediation activities	208.8	1.2	204.4	1.2	4.4	1.3
Construction	1,388.2	7.7	1,374.9	7.8	13.2	3.9
Sale and repair of motor vehicles and motorcycles, wholesale trade and trade intermediaries, except of motor vehicles and motorcycles	1,046.5	5.8	1,032.8	5.9	13.7	4.1
Retail trade, except of motor vehicles and motorcycles	1,853.7	10.3	1,829.9	10.4	23.9	7.1
Transport and storage	875.3	4.9	860.3	4.9	15.0	4.4
Accommodation	1,383.9	7.7	1,371.3	7.8	12.6	3.7
Information and communications, financial and insurance activities, real estate, professional, scientific and technical activities	1,855.7	10.3	1,836.1	10.4	19.6	5.8
Administrative and support services activities	896.7	5.0	860.1	4.9	36.6	10.8
Public Administration and defence; Compulsory Social Security	1,400.4	7.8	1,364.8	7.7	35.6	10.6
Education	1,165.8	6.5	1,133.1	6.4	32.7	9.7
Health and social services activities	1,410.9	7.9	1,373.6	7.8	37.3	11.1
Artistic, recreational and entertainment activities	308.3	1.7	278.3	1.6	30.0	8.9
Rest of services	1,075.0	6.0	1,052.8	6.0	22.2	6.6

The percentage of wage earners with disabilities in companies with 50 workers or more in the private sector is 2.0%, this percentage including those entities specialising in the social inclusion of persons with disabilities.

Wage earners with disabilities in private sector companies (*). Year 2011

	Percentage
Total wage earners	1.7
Companies with fewer than 50 workers	1.3
Companies with 50 workers or more	2.0

(*) In the case of the public sector, counting the reserve quota for persons with disabilities is established with the job calls, and not with regard to the staff.

Lastly, considering unemployed persons, the unemployed population with disabilities recorded a higher percentage of men and of persons aged 25 years old and over (noticeably higher in the groups aged 45 to 64 years old), as well as a lesser representation of unemployed persons with higher education, and a greater representation of unemployed persons with primary studies.

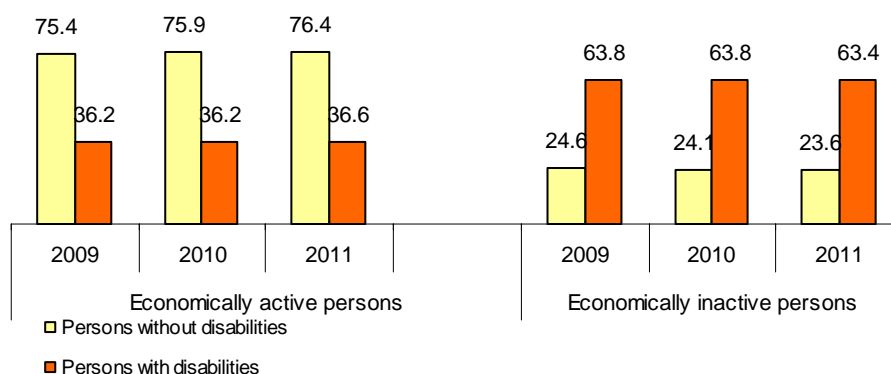
Unemployed persons, by disability. Year 2011. Absolute values in thousands.

	Total		Persons without disabilities		Persons with disabilities	
	Absolute values	Percentages	Absolute values	Percentages	Absolute values	Percentages
TOTAL	4,995.9	100.0	4,871.5	100.0	124.4	100.0
SEX						
Men	2,687.9	53.8	2,615.9	53.7	72.0	57.9
Women	2,307.9	46.2	2,255.6	46.3	52.4	42.1
AGE GROUPS						
16-24	892.7	17.9	877.4	18.0	15.3	12.3
25-34	1,486.0	29.7	1,458.8	29.9	27.2	21.9
35-44	1,295.9	25.9	1,262.8	25.9	33.1	26.6
45-54	921.3	18.4	887.6	18.2	33.7	27.1
55-64	400.0	8.0	384.9	7.9	15.1	12.1
EDUCATIONAL LEVEL						
Illiterate persons	54.1	1.1	52.3	1.1	1.8	1.4
Primary education	950.4	19.0	918.4	18.9	32.0	25.7
Secondary education and training and labour insertion programmes	3,000.9	60.1	2,924.8	60.0	76.1	61.1
Higher education, including doctorates	990.5	19.8	975.9	20.0	14.6	11.7

Disability and labour market: activity, employment and unemployment rates

From a labour market perspective, **the most significant aspect for the group of persons with disabilities was their low degree of participation, with 461,600 economically active persons and an activity rate of 36.6% in 2011**, almost 40 points lower than that of the population without disabilities (76.4%). This rate scarcely changed over the 2009-2011 period.

Performance of the economic activity rate (%)



The number of employed persons with disabilities in 2011 was 337,300. The employment rate was 26.7%, more than 30 points lower than that registered for persons without disabilities.

The employment rate decreased over the three years analysed, following a trend that was similar to that experienced by the population without disabilities.

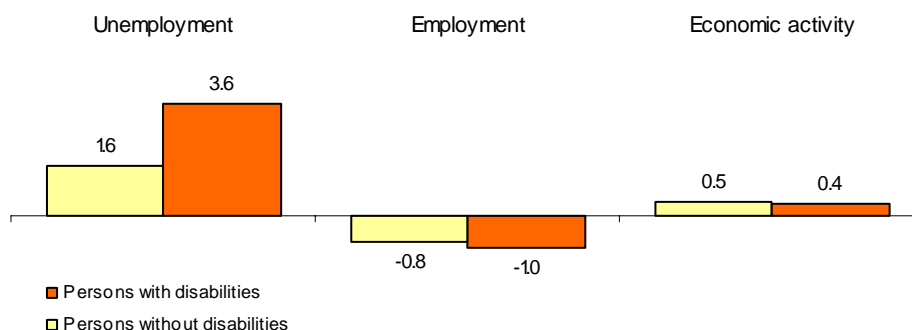
The number of unemployed persons with disabilities reached 124,400 in 2011. The **unemployment rate** for this group exceeded that of the population without disabilities by 5.2 points.

The evolution over the 2009-2011 period showed an increase in said rate, which was most noteworthy in the last year, with growth of 3.6 points. In fact, for the first time, it increased more than for those persons without disabilities.

Population aged 16 to 64 years old and relationship with economic activity (%)

	Persons without disabilities			Persons with disabilities		
	2009	2010	2011	2009	2010	2011
Economic activity rate	75.4	75.9	76.4	36.2	36.2	36.6
Employment rate	61.8	60.6	59.8	28.3	27.7	26.7
Unemployment rate	18.1	20.1	21.7	21.8	23.3	26.9

2011-2010 differences in the economic activity, employment and unemployment rates



Disability and labour market, by sex

In 2011, there were 200,200 employed men with disabilities (59.4% of the total), as compared with 137,100 women (40.6%).

Persons with disabilities, by sex and economic activity situation. Year 2011

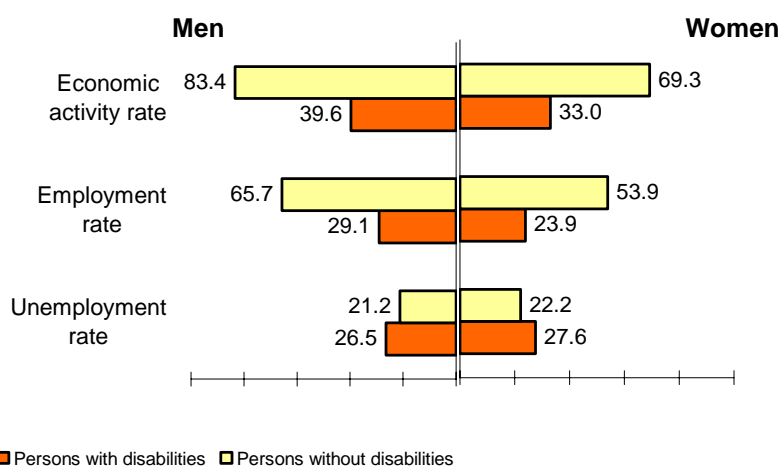
	Absolute values (thousands)			Percentages	
	Total	Men	Women	Men	Women
Total	1,262.0	687.7	574.2	54.5	45.5
Economically active persons	461.6	272.2	189.5	59.0	41.0
- Employed persons	337.3	200.2	137.1	59.4	40.6
- Unemployed persons	124.4	72.0	52.4	57.9	42.1
Economically inactive persons	800.3	415.5	384.8	51.9	48.1

As with the general population, women with certified disabilities showed a lesser economically active presence in the labour market. Nonetheless, their **economic activity rate was closer to that of the male rate than among the population without disabilities** (33%, as compared with 39.6%).

The employment rate of the men with certified disabilities exceeded that of the women with disabilities by 5.2 points. For the remaining population aged 16 to 64 years old, the difference was 11.8 points.

In turn, the unemployment rate of women with certified disabilities in 2011 (27.6%) was higher than that of men with certified disabilities (26.5%). The difference between the two was similar to that recorded for the population without disabilities.

Economic activity, employment and unemployment rates (%), by sex. Year 2011



Performance of economic activity, by sex

Units: percentages	Persons without disabilities			Persons with disabilities		
	2009	2010	2011	2009	2010	2011
TOTAL						
Economic activity rate	75.4	75.9	76.4	36.2	36.2	36.6
Employment rate	61.8	60.6	59.8	28.3	27.7	26.7
Unemployment rate	18.1	20.1	21.7	21.8	23.3	26.9
MEN						
Economic activity rate	83.8	83.6	83.4	41.0	40.4	39.6
Employment rate	68.9	67.1	65.7	32.1	31.4	29.1
Unemployment rate	17.8	19.8	21.2	21.6	22.2	26.5
WOMEN						
Economic activity rate	66.9	68.1	69.3	30.4	31.0	33.0
Employment rate	54.5	54.1	53.9	23.7	23.3	23.9
Unemployment rate	18.4	20.5	22.2	22.1	24.8	27.6

The performance of the unemployment and employment rates was negative, as compared with the year 2010, for both men and women with disabilities, with the exception of the female employment rate, which increased 0.6 points. Unemployment increased to a greater extent in both men and women with disabilities, than for persons without disabilities.

Disability and labour market, by age

Age exerted a considerable influence on the participation gap existing in the labour market between the population of persons with disabilities and the remaining population, observed in the greater incidence of unemployment of the younger population, and the greater incidence of economic inactivity of the older age group.

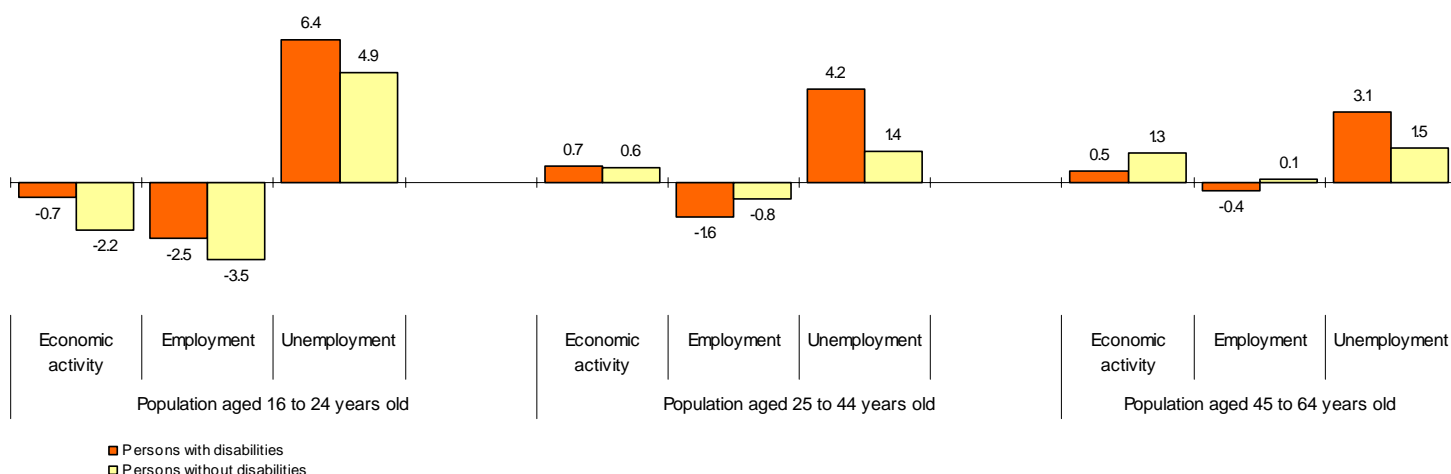
Regarding performance by age, young persons with disabilities were the only age group that registered a drop in economic activity (0.2 points less than in 2010), while the older persons recorded increases in unemployment (6.4 points more than in 2010).

For persons over 25 years old and with disabilities, the economic activity rate grew, but at a slower rate than that of persons without disabilities. Of all of the age groups, unemployment increased more intensely in the group of persons with disabilities than it did for the general population.

Performance of economic activity, by age group

Units: percentages	Persons without disabilities			Persons with disabilities		
	2009	2010	2011	2009	2010	2011
Total						
Economic activity rate	75.4	75.9	76.4	36.2	36.2	36.6
Employment rate	61.8	60.6	59.8	28.3	27.7	26.7
Unemployment rate	18.1	20.1	21.7	21.8	23.3	26.9
Population aged 16 to 24 years old						
Economic activity rate	49.9	47.6	45.4	35.8	35.6	34.9
Employment rate	31.0	27.9	24.4	19.2	17.0	14.5
Unemployment rate	37.7	41.4	46.3	46.5	52.1	58.5
Population aged 25 to 44 years old						
Economic activity rate	87.8	88.6	89.2	49.2	50.1	50.8
Employment rate	72.3	71.0	70.2	37.0	37.4	35.8
Unemployment rate	17.7	19.9	21.3	24.7	25.3	29.5
Population aged 45 to 64 years old						
Economic activity rate	68.9	70.1	71.4	29.1	28.9	29.4
Employment rate	60.0	59.7	59.8	24.3	23.6	23.2
Unemployment rate	12.8	14.8	16.3	16.4	18.2	21.3

2011-2010 differences in the economic activity, employment and unemployment rates



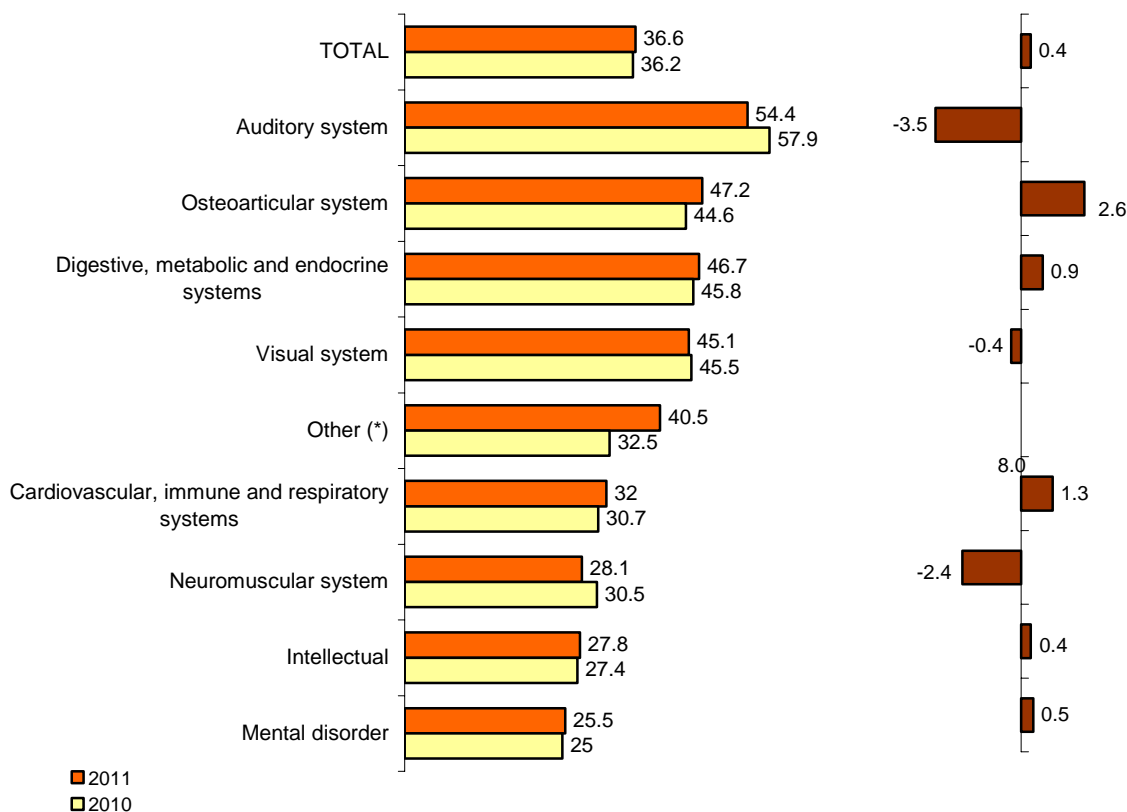
Disability and labour market, by type of disability

Labour participation was strongly determined by the type and intensity of the disability.

Thus, persons with auditory impairments presented the highest economic activity rates (54.4%). At the opposite end of the spectrum, the *mental disorder* impairment registered the lowest rates (25.5%).

Economic activity rate, by type of disability (%)

Differences (2011-2010)

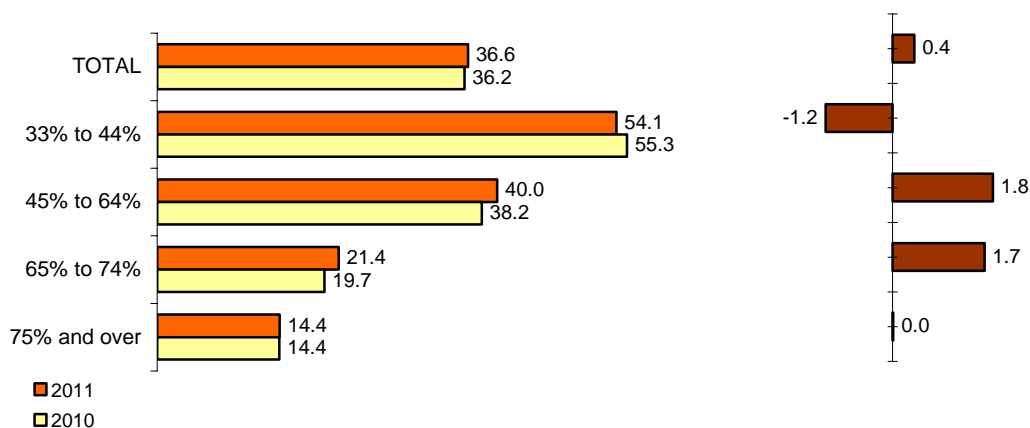


(*) The "Other" impairment group includes persons with expression, undetermined and unknown disabilities, and as of 2011, also includes persons affiliated with Social Security and for whom the type of disability is not recorded. Therefore, it is not compatible with the years prior to 2011.

In turn, the economic activity rate associated with the lowest intensity degree of disability (lower than 45%) stood at 54.1%. As the intensity of disability increased (up to a degree greater than or equal to 75%), the economic activity rate decreased to 14.4%.

Economic activity rate (%), by degree of disability. Year 2011

Differences (2011-2010)



Employment and disability

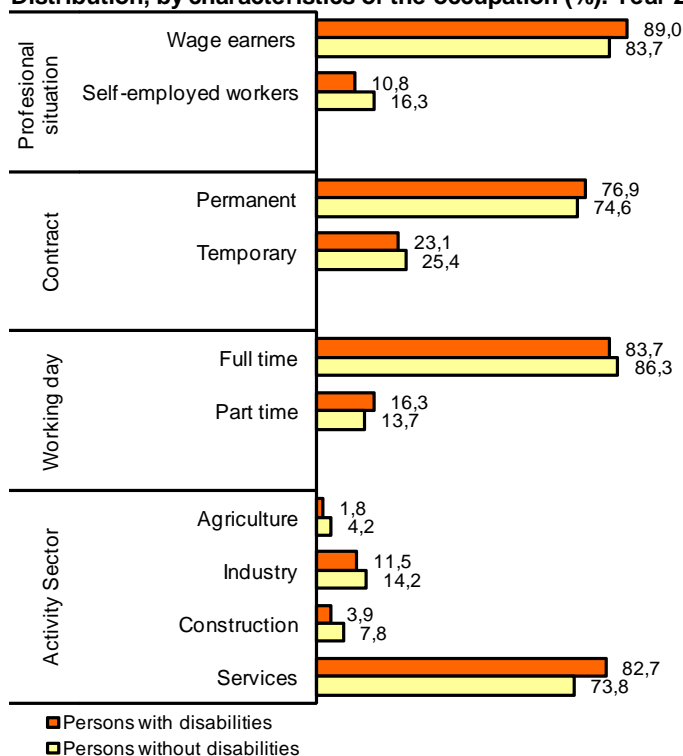
Regarding labour profile, most workers with disabilities were wage earners, they had a permanent contract and they carried out their activity in the services sector.

Thus, 89% of persons with disabilities who worked in 2011 did so as wage earners (5.3 points higher than for persons without disabilities), and 76.9% of them had a permanent contract (2.3 points higher than for the population without disabilities).

83.7% of employed persons with disabilities worked full time (2.6 points lower than for persons without disabilities).

82.7% of employed persons with disabilities carried out their activity in the Services sector, as compared with the 73.8% of those without disabilities.

Distribution, by characteristics of the occupation (%). Year 2011



Measures encouraging participation in the ordinary labour market²

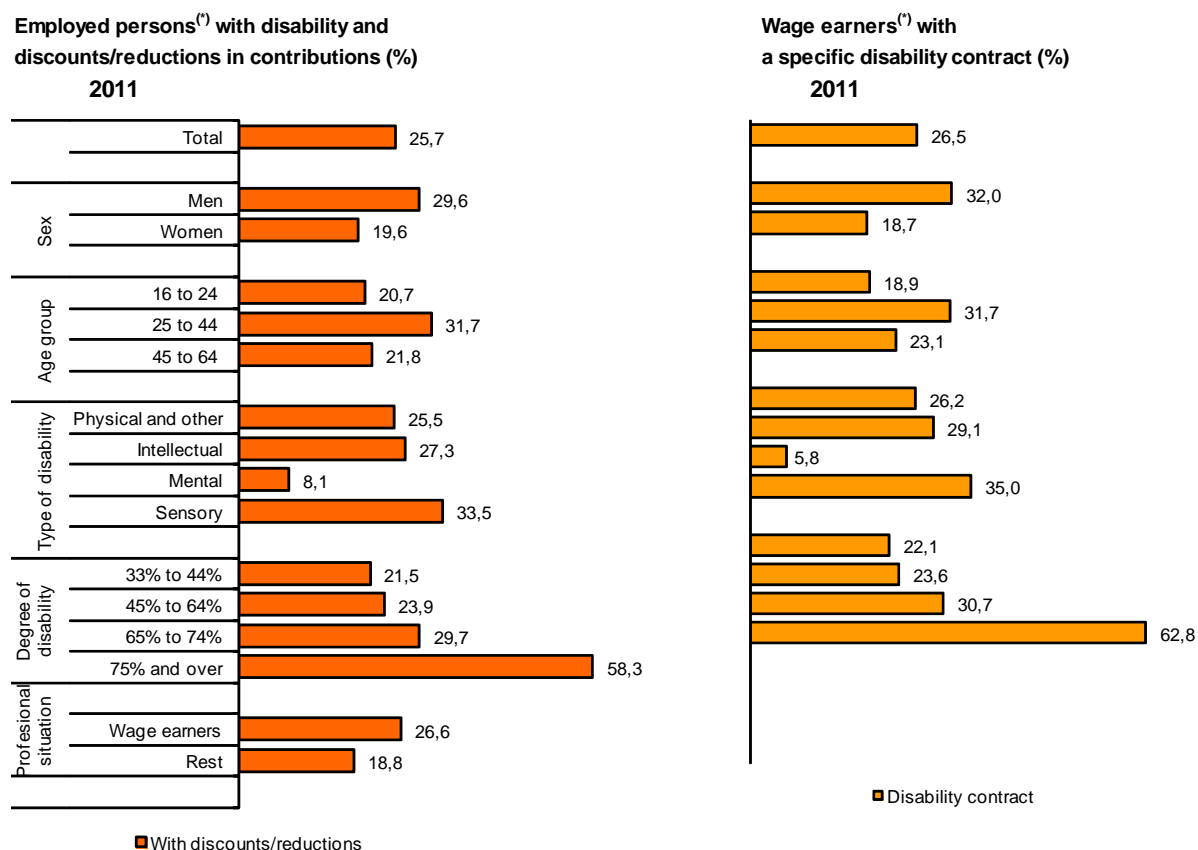
Among the policies intended to encourage the labour activity of the group, are those that favour their incorporation into ordinary employment. Worth noting among them are the reductions and discounts in the contribution quotas, both for wage-earning workers and for self-employed workers, and in the case of wage-earning workers, the specific hiring modality for workers with disabilities, which in addition to including discounts in the Social Security contribution quotas, considers certain subsidies.

In 2011, **a total of 25.7% of employed persons with disabilities** who made Social Security contributions **had some sort of deduction in the contributions**. These deductions had a greater effect on the wage earners than on the self-employed workers.

In the year 2011, **a total of 26.5% of wage earners with disabilities had the specific disability contract modality**.

Deductions in the contribution quotas and specific hiring mostly benefited the male population, the group aged 25 to 44 years old, the disability group associated with sensory impairments and the persons with a greater intensity degree of disability.

Encouraging the employment of persons with disabilities in ordinary centres. Year 2011



(*) Only persons with contribute to the TGSS

²The word "ordinary" is used in contrast to the word "protected" (work in special employment centres).

Disability and economic activity protection

Public Social Benefits are pensions and subsidies paid out of public funds, and whose purpose is to cover disability situations, retirement, death and survival, family protection, unemployment for persons aged over 52 years old, and other regulatory improvements and supplementary benefits. Therefore, they represent an important support tool for disability situations.

Eight out of 100 persons of working age received a benefit in the year 2011. In the specific case of persons with disabilities, **the public benefit system benefited 719,400 (57 out of 100). 19.3% of them (138,700 persons) were economically active.**

83% of the persons with disabilities who received benefits (122,200) received the benefit due to a labour disability. In turn, 3.1% (22,200) of the persons with disabilities who received a benefit did so solely in non-contributory terms, that is, without having contributed previously in exchange for them.

Persons of working age, with disabilities and who received some benefit in 2011

	Absolute values in thousands		Percentages	
	Yes	No	Yes	No
TOTAL	719.4	542.5	57.0	43.0
Received benefits and remain actively working	138.7	580.7	19.3	80.7
Received benefits derived from labour disability	597.2	122.2	83.0	17.0
Only received non-contributory benefits	22.2	697.2	3.1	96.9

Another protection measure for those persons with disabilities is the recognition of the **Dependency Situation**, following the passing of Law 39/2006, of 14 December, on the Promotion of Personal Autonomy and Assistance for persons in a dependency situation.

In 2011, a total of **16.5% of persons with disabilities (208,800) also had the dependency situation officially recognised. 17,500 of them (8.4% of dependent persons with disabilities) remained actively working.**

Persons with certified disabilities in 2011, by officially recognised dependency

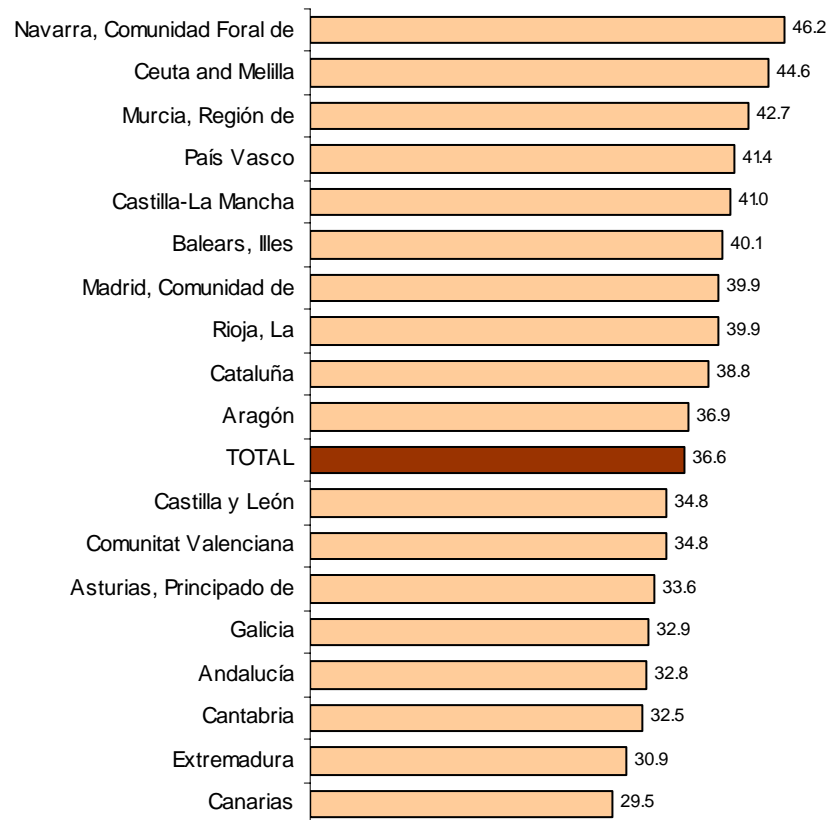
	(thousands)		Percentages			
	Total	Dependent	Not dependent		Not dependent	
			Total	Dependent	Total	Dependent
TOTAL	1,262.0	208.8	1,053.2	100	16.5	83.5
Economically active persons	461.6	17.5	444.1	100	3.8	96.2
Economically inactive persons	800.3	191.3	609.0	100	23.9	76.1

Disability and economic activity, by Autonomous Community

The Autonomous Communities that recorded the highest economic activity rates among those persons with disabilities in 2011 were Comunidad Foral de Navarra (46.2%) and Región de Murcia (42.7%). Said rate was also high in the Autonomous Cities of Ceuta and Melilla (44.6%).

In turn, the lowest economic activity rates were registered in Canarias (with 29.5%) and Extremadura (30.9%).

**Economic activity rate (%) of persons with disabilities, by Autonomous Community.
Year 2011**



Methodological note

The Employment of Persons with Disabilities (EPD) statistics have been prepared using the Economically Active Population Survey (EAPS) of the INE and the State Database of Persons with Disabilities (BEPD) of the Institute for the Elderly and Social Services (IMSERSO). Its creation was made possible by the initiative of these two bodies and of the Directorate General for Disability Support Policies, of the Spanish Committee of Representatives of Persons with Disabilities (CERMI) and of the ONCE Foundation. It has been partially financed by the latter organisation within the framework of the Operational Programme for Fighting Discrimination 2007-2013 and the Talent Programme, jointly financed by the European Social Fund.

The Employment of Persons with Disabilities researches the labour market-related situation of those aged 16 to 64 years old who have a disability certificate (with a degree of disability recognised by the responsible assessment bodies as greater than or equal to 33%).

The project came into being as a pilot trial in 2010, with data referring to the year 2008. In 2011, provisional results were obtained for reference periods 2009 and 2010. In addition, for the first time, data was included regarding the measures encouraging employment and regarding protected employment from the General Social Security Treasury (TGSS), as well as information regarding the receipt of benefits from the Register of Public Social Benefits of the National Social Security Institute (INSS) and data regarding dependence from the System for the Autonomy of and Support for Dependent Persons (SAAD).

The 2011 data also includes said information.

Employment of Persons with Disabilities Year 2011

Disability⁽¹⁾ and activity

1. Population aged 16 to 64 years old and relationship with economic activity.

Absolute values in thousands

	Total		Persons without disabilities		Persons with disabilities	
	2011	2010	2011	2010	2011	2010
TOTAL	30,706.3	30,828.1	29,444.4	29,656.3	1,262.0	1,171.9
Active persons	22,949.2	22,932.6	22,487.6	22,509.0	461.6	423.7
- Employed persons	17,953.3	18,304.1	17,616.1	17,979.3	337.3	324.8
- Unemployed persons	4,995.9	4,628.6	4,871.5	4,529.7	124.4	98.9
Inactive persons	7,757.1	7,895.5	6,956.8	7,147.3	800.3	748.2
Activity rate (16-64)	74.7	74.4	76.4	75.9	36.6	36.2
Employment rate (16-64)	58.5	59.4	59.8	60.6	26.7	27.7
Unemployment rate (16-64)	21.8	20.2	21.7	20.1	26.9	23.3
MEN	15,455.8	15,550.2	14,768.1	14,910.5	687.7	639.6
Active persons	12,595.5	12,729.9	12,323.3	12,471.4	272.2	258.5
- Employed persons	9,907.6	10,203.6	9,707.4	10,002.8	200.2	200.8
- Unemployed persons	2,687.9	2,526.3	2,615.9	2,468.6	72.0	57.7
Inactive persons	2,860.3	2,820.3	2,444.7	2,439.1	415.5	381.1
Activity rate (16-64)	81.5	81.9	83.4	83.6	39.6	40.4
Employment rate (16-64)	64.1	65.6	65.7	67.1	29.1	31.4
Unemployment rate (16-64)	21.3	19.8	21.2	19.8	26.5	22.2
WOMEN	15,250.5	15,278.0	14,676.3	14,745.8	574.2	532.2
Active persons	10,353.7	10,202.7	10,164.3	10,037.6	189.5	165.2
- Employed persons	8,045.8	8,100.5	7,908.7	7,976.5	137.1	124.0
- Unemployed persons	2,307.9	2,102.3	2,255.6	2,061.1	52.4	41.2
Inactive persons	4,896.8	5,075.3	4,512.1	4,708.2	384.8	367.1
Activity rate (16-64)	67.9	66.8	69.3	68.1	33.0	31.0
Employment rate (16-64)	52.8	53.0	53.9	54.1	23.9	23.3
Unemployment rate (16-64)	22.3	20.6	22.2	20.5	27.6	24.8

(1) These are persons with certified disabilities, and who have a degree of disability greater than or equal to 33%, according to the assessment procedure established by RD 1971/1999, modified by RD 1856/2009

Employment of Persons with Disabilities Year 2011

Disability⁽¹⁾ and activity

2. Population aged 16 to 64 years old, by age group and relationship with economic activity. Absolute values in thousands

	Total		Persons without disabilities		Persons with disabilities	
	2011	2010	2011	2010	2011	2010
POPULATION AGED 16 TO 24 YEARS C	4,258.0	4,366.6	4,182.2	4,299.0	75.9	67.6
Active persons	1,923.1	2,069.9	1,896.7	2,046.2	26.4	23.7
- Employed persons	1,030.4	1,211.2	1,019.3	1,199.8	11.1	11.4
- Unemployed persons	892.7	858.6	877.4	846.4	15.3	12.3
Inactive persons	2,335.0	2,296.7	2,285.5	2,252.8	49.5	43.9
Activity rate (16-64)	45.2	47.4	45.4	47.6	34.9	35.6
Employment rate (16-64)	24.2	27.7	24.4	27.9	14.5	17.0
Unemployment rate (16-64)	46.4	41.5	46.3	41.4	58.5	52.1
POPULATION AGED 25 TO 44 YEARS C	14,718.6	14,945.1	14,315.3	14,563.0	403.2	382.1
Active persons	12,974.1	13,088.0	12,769.3	12,896.5	204.8	191.5
- Employed persons	10,192.2	10,476.1	10,047.8	10,333.4	144.4	142.8
- Unemployed persons	2,781.9	2,611.9	2,721.6	2,563.1	60.3	48.7
Inactive persons	1,744.5	1,857.1	1,546.0	1,666.5	198.5	190.6
Activity rate (16-64)	88.1	87.6	89.2	88.6	50.8	50.1
Employment rate (16-64)	69.2	70.1	70.2	71.0	35.8	37.4
Unemployment rate (16-64)	21.4	20.0	21.3	19.9	29.5	25.3
POPULATION AGED 45 TO 64 YEARS C	11,729.7	11,516.4	10,946.9	10,794.3	782.8	722.1
Active persons	8,052.0	7,774.8	7,821.5	7,566.3	230.5	208.5
- Employed persons	6,730.7	6,616.7	6,549.0	6,446.1	181.7	170.6
- Unemployed persons	1,321.3	1,158.1	1,272.5	1,120.2	48.8	37.9
Inactive persons	3,677.7	3,741.6	3,125.3	3,228.0	552.3	513.7
Activity rate (16-64)	68.6	67.5	71.4	70.1	29.4	28.9
Employment rate (16-64)	57.4	57.5	59.8	59.7	23.2	23.6
Unemployment rate (16-64)	16.4	14.9	16.3	14.8	21.3	18.2

(1) These are persons with certified disabilities, and who have a degree of disability greater than or equal to 33%, according to the assessment procedure established by RD 1971/1999, modified by RD 1856/2009

Employment of Persons with Disabilities Year 2011

Disability⁽¹⁾ and activity

3. Population aged 16 to 64 years old, by type of disability and relationship with economic activity. Absolute values in thousands

	Absolute values		Activity rate		Employment rate	
	2011	2010	2011	2010	2011	2010
TOTAL	1262.0	36.2	36.6	36.2	26.7	27.7
TYPE OF DISABILITY						
Osteoarticular system	292.3	273.2	45.1	45.8	35.0	36.6
Neuromuscular system	149.5	140.8	28.1	30.5	21.4	23.8
Intellectual	171.6	159.2	27.8	27.4	17.1	18.2
Mental disorder	230.7	206.0	25.5	25.0	15.4	16.3
Visual system	88.3	83.8	46.7	44.6	38.5	37.5
Auditory system	72.6	66.7	54.4	57.9	42.8	47.4
Cardiovascular, immunological and respiratory systems	113.3	107.6	32.0	30.7	23.5	24.7
Digestive, metabolic and endocrine systems	53.1	50.3	40.5	45.5	28.1	32.7
Others ⁽²⁾	90.6	84.4	47.2	32.5	34.8	26
DEGREE OF DISABILITY						
33% to 44%	483.7	449.3	54.1	55.3	41.2	43.9
45% to 64%	250.5	228.8	40.0	38.2	27.6	27.7
65% to 74%	340.5	320.5	21.4	19.7	13.6	13.3
75% and over	187.3	173.3	14.4	14.4	11.9	12.4

(1) These are persons with certified disabilities, and who have a degree of disability greater than or equal to 33%, according to the assessment procedure established by RD 1971/1999, modified by RD 1856/2009

(2) The Other impairment group is not comparable with years prior to 2011. It includes persons with expression, undetermined and unknown disabilities, and as of 2011, persons registered in Social Security and for whom the type of disability is not recorded

Employment of Persons with Disabilities Year 2011

Disability⁽¹⁾ and activity

4. Population aged 16 to 64 years old with disabilities, according to whether or not they receive benefits, and relationship with economic activity. Absolute values in thousands

	Total		Economically active persons		Economically inactive persons	
	2011	2010	2011	2010	2011	2010
Persons with disabilities (16-64)	1,262.0	1,171.9	461.6	423.7	800.3	748.2
Receipt of benefits						
- They receive benefits	719.4	663.8	138.7	121.4	580.7	542.3
- They do not receive benefits	542.5	508.1	322.9	302.2	219.6	205.8
Household income						
- They reside in households with income	1,248.0	1,162.6	456.5	420.1	791.5	742.5
- They reside in households without income	14.0	9.3	5.1	3.6	8.8	5.7

5. Persons with disabilities(1) aged 16 to 64 years old, by Autonomous Community and relationship with economic activity. Absolute values in thousands

	Total		Prevalence		Tasa de actividad	
	2011	2010	2011	2010	2011	2010
TOTAL	1,262.0	1,171.9	4.1	3.8	36.6	36.2
Andalucía	245.8	215.5	4.4	3.9	32.8	31.5
Aragón	36.1	35.3	4.2	4.1	36.9	34.7
Asturias, Principado de	41.6	41.4	6.0	5.9	33.6	32.0
Baleares, Illes	27.0	23.7	3.6	3.2	40.1	37.9
Canarias	53.2	53.2	3.6	3.6	29.5	27.6
Cantabria	17.9	17.4	4.6	4.5	32.5	34.8
Castilla y León	64.3	62.2	4.0	3.9	34.8	32.8
Castilla-La Mancha	68.4	57.4	5.1	4.3	41.0	40.0
Cataluña	213.4	197.1	4.4	4.1	38.8	39.3
Comunitat Valenciana	93.9	91.9	2.8	2.7	34.8	37.4
Extremadura	32.9	32.5	4.6	4.6	30.9	32.5
Galicia	82.3	83.1	4.6	4.6	32.9	32.3
Madrid, Comunidad de	114.5	104.0	2.7	2.4	39.9	40.9
Murcia, Región de	72.2	63.0	7.3	6.4	42.7	48.9
Navarra, Comunidad Foral de	14.8	14.0	3.6	3.4	46.2	36.5
País Vasco	65.5	63.1	4.7	4.5	41.4	36.0
Rioja, La	8.2	8.1	4.0	3.9	39.9	40.6
Ceuta and Melilla	9.9	9.1	9.9	9.3	44.6	40.6

(1) These are persons with certified disabilities, and who have a degree of disability greater than or equal to 33%, according to the assessment procedure established by RD 1971/1999, modified by RD 1856/2009

Employment of Persons with Disabilities Year 2011

Disability⁽¹⁾ and occupation

6. Population aged 16 to 64 years old, by characteristics of their occupation and disability. Absolute values in thousands

	Persons without disabilities				Persons with disabilities			
	Total		Percentage		Total		Percentage	
	2011	2010	2011	2010	2011	2010	2011	2010
TOTAL								
Employed persons	17,616.1	17,979.3	100.0	100.0	337.3	324.8	100.0	100.0
PROFESSIONAL SITUATION								
- Wage earners	14,737.6	14,989.8	83.7	83.4	300.2	290.2	89.0	89.3
- Self-employed workers	2,871.2	2,981.5	16.3	16.6	36.6	34.5	10.8	10.6
WAGE EARNERS BY TYPE OF CONTRACT								
- With permanent contracts	10,993.1	11,234.3	74.6	74.9	230.8	229.0	76.9	78.9
- With temporary contracts	3,744.5	3,755.5	25.4	25.1	69.5	61.2	23.1	21.1
TYPE OF WORKING DAY								
- Full-time	15,206.0	15,610.5	86.3	86.8	282.3	281.2	83.7	86.6
- Part-time	2,410.1	2,368.8	13.7	13.2	54.9	43.6	16.3	13.4
ACTIVITY SECTOR								
- Agriculture	742.1	769.2	4.2	4.3	6.1	9.0	1.8	2.8
- Industry	2,505.9	2,555.8	14.2	14.2	38.8	45.6	11.5	14.0
- Construction	1,374.9	1,627.5	7.8	9.1	13.2	15.1	3.9	4.7
- Services	12,993.2	13,026.9	73.8	72.5	279.1	255.1	82.7	78.5
EDUCATIONAL LEVEL								
- Illiterate	44.1	55.5	0.3	0.3	4.4	4.4	1.3	1.3
- Primary	1,907.7	2,186.1	10.8	12.2	63.0	61.4	18.7	18.9
- Secondary and labour training and insertion programmes	8,946.5	9,111.2	50.8	50.7	178.8	171.5	53.0	52.8
- Higher education, including doctorates	6,717.8	6,626.5	38.1	36.9	91.1	87.6	27.0	27.0
DURATION OF THE CONTRACT								
- Less than 6 months	1,738.3	1,795.5	9.9	10.0	29.1	26.0	8.6	8.0
- From 6 months to 1 year	948.8	998.4	5.4	5.6	21.1	18.2	6.3	5.6
- From 1 to 3 years	2,416.2	2,849.7	13.7	15.8	44.0	43.6	13.0	13.4
- More than 3 years	12,512.9	12,335.7	71.0	68.6	243.0	236.9	72.1	72.9
HAVING MORE THAN ONE JOB								
- Has one or more other jobs	358.3	393.7	2.0	2.2	6.6	5.2	2.0	1.6
- Does not have another job	17,257.8	17,585.5	98.0	97.8	330.6	319.6	98.0	98.4

(1) These are persons with certified disabilities, and who have a degree of disability greater than or equal to 33%, according to the assessment procedure established by RD 1971/1999, modified by RD 1856/2009

Employment of Persons with Disabilities Year 2011

Disability⁽¹⁾ and measures to encourage employment

7. 1. Employed persons with disabilities who contribute to Social Security in ordinary centres⁽²⁾, according to reductions or discounts due to disability.

Absolute values in thousands

	Absolute values in thousands						Percentages			
	Total		With reductions		Without reductions		With reductions		Without reductions	
	2011	2010	2011	2010	2011	2010	2011	2010	2011	2010
TOTAL	231.2	227.7	59.5	57.6	171.8	170.1	25.7	25.3	74.3	74.7
SEX										
Men	141.1	143.6	41.8	39.2	99.3	104.3	29.6	27.3	70.4	72.7
Women	90.1	84.1	17.7	18.4	72.5	65.8	19.6	21.8	80.4	78.2
AGE GROUPS										
16 to 24 years old	5.1	7.3	1.1	2.9	4.1	4.4	20.7	39.2	79.3	60.8
25 to 44 years old	91.7	95.3	29.0	31.6	62.7	63.7	31.7	33.1	68.3	66.9
45 to 64 years old	134.4	125.1	29.4	23.2	105.0	102.0	21.8	18.5	78.2	81.5
TYPE OF DISABILITY⁽³⁾										
Physical and others	149.6	146.6	38.2	33.1	111.4	113.5	25.5	22.6	74.5	77.4
Intellectual	11.3	11.8	3.1	4.9	8.2	6.9	27.3	41.7	72.7	58.3
Mental	21.1	20.7	1.7	4.1	19.4	16.6	8.1	19.9	91.9	80.1
Sensory	49.2	48.6	16.5	15.5	32.7	33.1	33.5	31.9	66.5	68.1
DEGREE OF DISABILITY										
33% to 44%	140.8	148.1	30.3	29.6	110.5	118.5	21.5	20.0	78.5	80.0
45% to 64%	49.2	42.5	11.7	10.9	37.5	31.7	23.9	25.6	76.1	74.4
65% to 74%	23.3	21.5	6.9	6.9	16.4	14.6	29.7	32.2	70.3	67.8
75% and over	17.9	15.6	10.5	10.2	7.5	5.4	58.3	65.5	41.7	34.5
PROFESSIONAL SITUATION										
Wage earners	203.5	201.5	54.2	52.0	149.3	149.5	26.6	25.8	73.4	74.2
Freelance workers and others	27.7	26.2	5.2	5.6	22.5	20.6	18.8	21.5	81.2	78.5

(1) These are persons with certified disabilities, and who have a degree of disability greater than or equal to 33%, according to the assessment procedure established by RD 1971/1999, modified by RD 1856/2009.

(2) This excludes Special Employment Centres

(3) Impairments are grouped in the following categories:

- Physical and other: this includes impairments of the osteoarticular system, the neuromuscular system, the cardiovascular system, the immune and respiratory system, the digestive, metabolic and endocrine system
- Sensory: this includes visual and auditory impairments

Employment of Persons with Disabilities Year 2011

Disability⁽¹⁾ and measures to encourage employment

8. Wage earners⁽³⁾ with disabilities who contribute to Social Security in ordinary centres according to whether they have a specific disability contract. Absolute values in thousands

	Valores absolutos en miles						Porcentajes			
	Total		Contrato específico de discapacidad		Otros contratos		Contrato específico de discapacidad		Otros contratos	
	2011	2010	2011	2010	2011	2010	2011	2010	2011	2010
TOTAL	203.5	201.5	53.9	51.5	149.6	150.0	26.5	25.6	73.5	74.4
SEXO										
Hombres	119.1	123.9	38.2	35.0	81.0	88.9	32.0	28.2	68.0	71.8
Mujeres	84.3	77.6	15.7	16.5	68.6	61.1	18.7	21.3	81.3	78.7
GRUPOS DE EDAD										
De 16 a 24 años	5.1	7.2	1.0	2.7	4.1	4.4	18.9	38.4	81.1	61.6
De 25 a 44 años	82.5	84.4	26.2	27.9	56.3	56.5	31.7	33.0	68.3	67.0
De 45 a 64 años	115.9	110.0	26.8	20.9	89.1	89.1	23.1	19.0	76.9	81.0
TIPO DE DISCAPACIDAD⁽³⁾										
Física y otras	129.8	127.4	34.0	29.1	95.8	98.3	26.2	22.8	73.8	77.2
Intelectual	9.5	10.4	2.8	4.4	6.8	6.0	29.1	42.4	70.9	57.6
Mental	18.3	18.7	1.1	3.3	17.2	15.5	5.8	17.5	94.2	82.5
Sensorial	45.8	45.0	16.1	14.7	29.8	30.3	35.0	32.7	65.0	67.3
GRADO DE DISCAPACIDAD										
Grado 33% a 44%	123.7	129.6	27.3	25.2	96.3	104.4	22.1	19.5	77.9	80.5
Grado 45% a 64%	43.1	36.5	10.2	9.5	32.9	27.0	23.6	25.9	76.4	74.1
Grado 65% a 74%	20.8	20.7	6.4	6.9	14.4	13.8	30.7	33.4	69.3	66.6
Grado 75% y más	15.9	14.6	10.0	9.9	5.9	4.8	62.8	67.5	37.2	32.5

(1) These are persons with certified disabilities, and who have a degree of disability greater than or equal to 33%, according to the assessment procedure established by RD 1971/1999, modified by RD 1856/2009.

(2) This excludes Special Employment Centres

(3) Impairments are grouped in the following categories:

- Physical and other: this includes impairments of the osteoarticular system, the neuromuscular system, the cardiovascular system, the immune and respiratory system, the digestive, metabolic and endocrine system
- Sensory: this includes visual and auditory impairments

Employment of Persons with Disabilities Year 2011

Disability⁽¹⁾ and Public Social Benefits⁽²⁾

9. Persons with disabilities who receive Public Social Benefits

Absolute figures in thousands

	Absolute values in thousands						Percentages			
	Total		With Benefits		Without Benefits		With Benefits		Without Benefits	
	2011	2010	2011	2010	2011	2010	2011	2010	2011	2010
TOTAL	1,262.0	1,171.9	719.4	663.8	542.5	508.1	57.0	56.6	43.0	43.4
SEX										
Men	687.7	639.6	414.5	384.2	273.2	255.5	60.3	60.1	39.7	39.9
Women	574.2	532.2	304.9	279.6	269.4	252.6	53.1	52.5	46.9	47.5
AGE GROUPS										
16 to 24 years old	75.9	67.6	13.6	15.2	62.3	52.4	17.9	22.5	82.1	77.5
25 to 44 years old	403.2	382.1	178.0	163.9	225.3	218.2	44.1	42.9	55.9	57.1
45 to 64 years old	782.8	722.1	527.9	484.7	255.0	237.4	67.4	67.1	32.6	32.9
TYPE OF DISABILITY⁽³⁾										
Physical and others	698.8	656.2	409.4	385.6	289.3	270.5	58.6	58.8	41.4	41.2
Intellectual	171.6	159.2	86.9	78.9	84.7	80.3	50.6	49.6	49.4	50.4
Mental	230.7	206.0	147.9	133.5	82.8	72.5	64.1	64.8	35.9	35.2
Sensory	160.9	150.4	75.2	65.7	85.7	84.7	46.7	43.7	53.3	56.3
DEGREE OF DISABILITY										
33% to 44%	483.7	449.3	221.2	201.4	262.5	248.0	45.7	44.8	54.3	55.2
45% to 64%	250.5	228.8	127.6	117.5	122.9	111.2	50.9	51.4	49.1	48.6
65% to 74%	340.5	320.5	244.6	228.5	95.9	92.0	71.8	71.3	28.2	28.7
75% and over	187.3	173.3	126.0	116.4	61.3	56.9	67.3	67.1	32.7	32.8
ACTIVITY SITUATION										
Economically active persons	461.6	423.7	138.7	121.4	322.9	302.2	30.0	28.7	70.0	71.3
Economically inactive persons	800.3	748.2	580.7	542.3	219.6	205.8	72.6	72.5	27.4	27.5

(1) Persons with a disability certificate: degree of disability greater than or equal to 33%, according to the assessment procedure established by RD 1971/1999, modified by RD 1856/2009.

(2) Public Social Benefits: These are economic benefits paid out of public funds and intended for persons and families. They include benefits for incapacity, retirement, death and family allowance, LISMI subsidies, complementary benefits, care pensions and single-payment pensions.

(3) Impairments are grouped in the following categories:

- Physical and other: this includes impairments of the osteoarticular system, the neuromuscular system, the cardiovascular system, the immune and respiratory system, the digestive, metabolic and endocrine system
- Sensory: this includes visual and auditory impairments

Employment of Persons with Disabilities Year 2011

Disability⁽¹⁾ and Public Social Benefits⁽²⁾

10. Persons with disabilities who receive Public Social Benefits, according to the type of benefit. Absolute figures in thousands

	Absolute values in thousands						Percentages			
	Total		incapacity		Other benefits		incapacity		Other benefits	
	2011	2010	2011	2010	2011	2010	2011	2010	2011	2010
TOTAL	719.4	663.8	597.2	544.4	122.2	119.4	83.0	82.0	17.0	18.0
SEX										
Men	414.5	384.2	348.6	321.7	66.0	62.5	84.1	83.7	15.9	16.3
Women	304.9	279.6	248.6	222.7	56.2	56.9	81.6	79.6	18.4	20.4
AGE GROUPS										
16 to 24 years old	13.6	15.2	10.6	8.8	3.0	6.4	78.2	57.6	21.8	42.4
25 to 44 years old	178.0	163.9	152.7	139.6	25.2	24.2	85.8	85.2	14.2	14.8
45 to 64 years old	527.9	484.7	433.8	396.0	94.0	88.7	82.2	81.7	17.8	18.3
TYPE OF DISABILITY⁽³⁾										
Physical and others	409.4	385.6	359.2	334.1	50.2	51.6	87.7	86.6	12.3	13.4
Intellectual	86.9	78.9	56.9	47.2	29.9	31.7	65.6	59.8	34.4	40.2
Mental	147.9	133.5	124.8	111.3	23.1	22.2	84.4	83.4	15.6	16.6
Sensory	75.2	65.7	56.2	51.8	19.0	13.9	74.7	78.8	25.3	21.2
DEGREE OF DISABILITY										
33% to 44%	221.2	201.4	180.9	163.2	40.3	38.1	81.8	81.1	18.2	18.9
45% to 64%	127.6	117.5	107.3	97.2	20.2	20.4	84.1	82.7	15.9	17.3
65% to 74%	244.6	228.5	207.2	191.0	37.4	37.5	84.7	83.6	15.3	16.4
75% and over	126.0	116.4	101.7	92.9	24.3	23.4	80.7	79.9	19.3	20.1
ACTIVITY SITUATION										
Economically active persons	138.7	121.4	112.1	98.9	26.5	22.6	80.9	81.4	19.1	18.6
Economically inactive persons	580.7	542.3	485.0	445.5	95.7	96.9	83.5	82.1	16.5	17.9

(1) Persons with a disability certificate: degree of disability greater than or equal to 33%, according to the assessment procedure established by RD 1971/1999, modified by RD 1856/2009.

(2) Public Social Benefits: These are economic benefits paid out of public funds and intended for persons and families. They include benefits for incapacity, retirement, death and family allowance, LISMI subsidies, complementary benefits, care pensions and single-payment pensions.

(3) Impairments are grouped in the following categories:

- Physical and other: this includes impairments of the osteoarticular system, the neuromuscular system, the cardiovascular system, the immune and respiratory system, the digestive, metabolic and endocrine system
- Sensory: this includes visual and auditory impairments

Employment of Persons with Disabilities Year 2011

Disability⁽¹⁾ and Public Social Benefits⁽²⁾

11. Persons with disabilities who receive Public Social Benefits, according to their contributory nature. Absolute figures in thousands

	Absolute values in thousands						Percentages			
	Total		Only non-contributory		Contributory and non-contributory		Only non-contributory		Contributory and non-contributory	
	2011	2010	2011	2010	2011	2010	2011	2010	2011	2010
TOTAL	719.4	663.8	22.2	21.2	697.2	642.6	3.1	3.2	96.9	96.8
SEX										
Men	414.5	384.2	6.5	7.1	408.0	377.1	1.6	1.8	98.4	98.2
Women	304.9	279.6	15.7	14.1	289.2	265.5	5.1	5.0	94.9	95.0
AGE GROUPS										
16 to 24 years old	13.6	15.2	1.7	2.0	11.9	13.2	12.3	13.2	87.7	86.8
25 to 44 years old	178.0	163.8	12.6	10.7	165.3	153.2	7.1	6.5	92.9	93.5
45 to 64 years old	527.9	484.7	7.9	8.5	520.0	476.2	1.5	1.8	98.5	98.2
TYPE OF DISABILITY⁽³⁾										
Physical and others	409.4	385.7	10.4	9.7	399.1	375.9	2.5	2.5	97.5	97.5
Intellectual	86.9	78.9	4.8	4.3	82.0	74.6	5.6	5.4	94.4	94.6
Mental	147.9	133.5	4.1	4.2	143.8	129.4	2.8	3.1	97.2	96.9
Sensory	75.2	65.7	2.9	3.0	72.4	62.7	3.8	4.6	96.2	95.4
DEGREE OF DISABILITY										
33% to 44%	221.2	201.3	7.7	6.9	213.5	194.4	3.5	3.4	96.5	96.6
45% to 64%	127.6	117.6	6.0	4.4	121.5	113.1	4.7	3.7	95.3	96.2
65% to 74%	244.6	228.5	6.0	6.6	238.6	221.9	2.4	2.9	97.6	97.1
75% and over	126.0	116.3	2.5	3.3	123.5	113.1	1.9	2.8	98.1	97.2
ACTIVITY SITUATION										
Economically active persons	138.7	121.5	12.2	10.9	126.5	110.5	8.8	9.0	91.2	90.9
Economically inactive persons	580.7	542.4	10.0	10.3	570.7	532.1	1.7	1.9	98.3	98.1

(1) Persons with a disability certificate: degree of disability greater than or equal to 33%, according to the assessment procedure established by RD 1971/1999, modified by RD 1856/2009.

(2) Public Social Benefits: These are economic benefits paid out of public funds and intended for persons and families. They include benefits for incapacity, retirement, death and family allowance, LISMI subsidies, complementary benefits, care pensions and single-payment pensions.

(3) Impairments are grouped in the following categories:

- Physical and other: this includes impairments of the osteoarticular system, the neuromuscular system, the cardiovascular system, the immune and respiratory system, the digestive, metabolic and endocrine system
- Sensory: this includes visual and auditory impairments

Employment of Persons with Disabilities Year 2011

Disability⁽¹⁾ and Dependency⁽²⁾

12. Persons with a disability certificate, according to officially recognised dependency. Absolute figures in thousands.

	Persons with disabilities ⁽¹⁾						Percentages			
	Total		Dependent ⁽²⁾		Not dependent		Dependent ⁽²⁾		Not dependent	
	2011	2010	2011	2010	2011	2010	2011	2010	2011	2010
TOTAL	1,262.0	1,171.9	208.8	188.7	1,053.2	983.2	16.5	16.1	83.5	83.9
SEX										
Men	687.7	639.6	117.6	108.3	570.1	531.3	17.1	16.9	82.9	83.1
Women	574.2	532.2	91.1	80.4	483.1	451.8	15.9	15.1	84.1	84.9
AGE GROUPS										
16 to 24 years old	75.9	67.6	22.4	21.6	53.5	46.0	29.5	32.0	70.5	68.0
25 to 44 years old	403.2	382.1	73.9	74.2	329.4	308.0	18.3	19.4	81.7	80.6
45 to 64 years old	782.8	722.1	112.5	92.9	670.3	629.2	14.4	12.9	85.6	87.1
TYPE OF DISABILITY⁽³⁾										
Physical and others	698.8	656.2	92.2	80.3	606.5	575.8	13.2	12.2	86.8	87.8
Intellectual	171.6	159.2	69.2	61.1	102.4	98.2	40.3	38.3	59.7	61.7
Mental	230.7	206.0	33.4	33.7	197.3	172.3	14.5	16.4	85.5	83.6
Sensory	160.9	150.4	14.0	13.6	146.9	136.9	8.7	9.0	91.3	91.0
DEGREE OF DISABILITY										
33% to 44%	483.7	449.3	12.9	12.1	470.8	437.2	2.7	2.7	97.3	97.3
45% to 64%	250.5	228.8	23.1	19.9	227.4	208.8	9.2	8.7	90.8	91.3
65% to 74%	340.5	320.5	70.4	61.5	270.1	259.0	20.7	19.2	79.3	80.8
75% and over	187.3	173.3	102.5	95.1	84.8	78.2	54.7	54.9	45.3	45.1
ACTIVITY SITUATION										
Economically active persons	461.6	423.7	17.5	14.4	444.1	409.3	3.8	3.4	96.2	96.6
Economically inactive persons	800.3	748.2	191.3	174.3	609.0	573.8	23.9	23.3	76.1	76.7

(1) Persons with a disability certificate: degree of disability greater than or equal to 33%, according to the assessment procedure established by RD 1971/1999, modified by RD 1856/2009.

(2) Public Social Benefits: These are economic benefits paid out of public funds and intended for persons and families. They include benefits for incapacity, retirement, death and family allowance, LISMI subsidies, complementary benefits, care pensions and single-payment pensions.

(3) Impairments are grouped in the following categories:

- Physical and other: this includes impairments of the osteoarticular system, the neuromuscular system, the cardiovascular system, the immune and respiratory system, the digestive, metabolic and endocrine system
- Sensory: this includes visual and auditory impairments