

Household Projections 2020-2035

If current trends are maintained, the number of households in Spain would grow by more than 1.1 million in the next 15 years

In 2035 there would be more than 5.7 million single-person households, or 28.9% of the total

The number of households would increase in all Autonomous Communities, except in Castilla y León and Principado de Asturias

The Household Projection 2020 - 2035 reflects the result that the continuation of current demographic trends would have on the number of households. Due to its form of construction, its results are consistent with those of the previously released Population Projections¹.

According to this projection, the number of households resident in Spain would increase by 1,103,761 (5.9%) between 2020 and 2035, reaching the figure of 19,796,040. During the same period, the resident population in Spain would increase by 954,497 persons (2.0%).

This would mean a decrease in the number of people living in each household. Thus, the average household size would decrease from the current 2.51 to 2.41 persons per household in 2035.

Household Projection in Spain (2020-2035)

Year	Household number at 1 January	Absolute growth (5 years)	Annual average relative growth (%)
2020	18,692,279	294,015	0.31
2025	18,986,294	387,718	0.41
2030	19,374,012	422,028	0.44
2035	19,796,040		

Evolution of the number of households by size

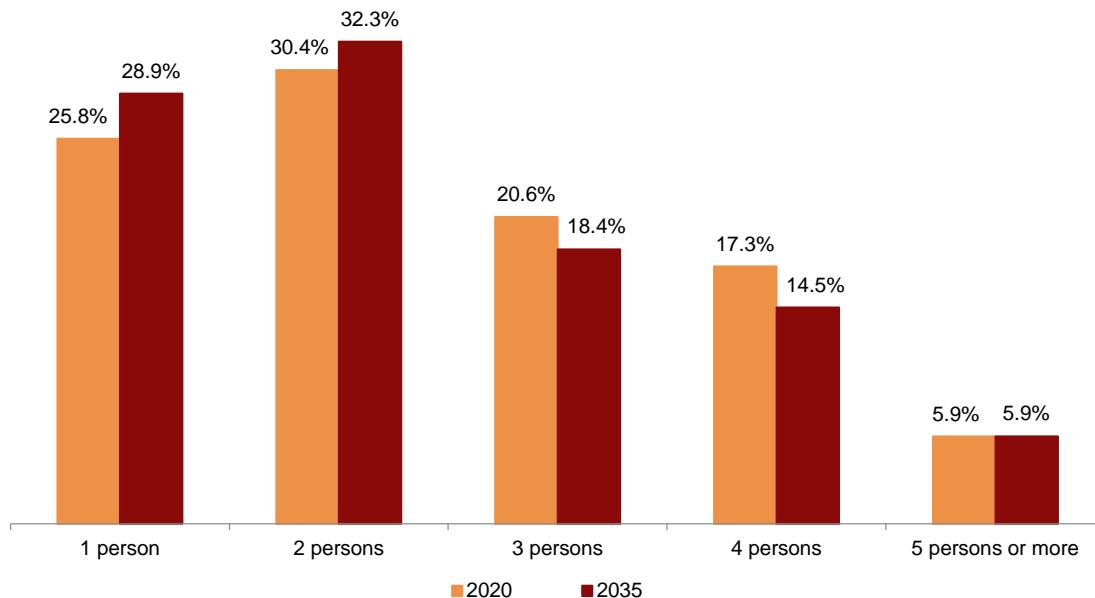
Between 2020 and 2035, the smallest households (one or two people) would continue to grow, while those with three and four persons would experience a reduction. Those with five or more persons would also continue the growth trend seen in recent years.

¹ Population Projections 2020-2070 (September 22): https://www.ine.es/prensa/pp_2020_2070.pdf

Projected Number of Households by Size (2020-2035)

	1 January 2020	1 January 2035	Growth 2020-2035	
			Absolute	Relative (%)
TOTAL	18,692,279	19,796,040	1,103,761	5.90
1 person	4,829,600	5,712,291	882,691	18.3
2 persons	5,690,058	6,402,033	711,975	12.5
3 persons	3,848,456	3,646,082	-202,374	-5.3
4 persons	3,228,079	2,872,122	-355,957	-11.0
5 persons or more	1,096,086	1,163,512	67,426	6.2
Population living in households	46,831,144	47,676,205	845,062	1.8
Average size of households	2.51	2.41	-0.10	-3.87

Evolution of the Proportion of Households by Size (2020-2035)



Single-person households would show the greatest increase in the next 15 years, in both absolute and relative values. In 2035, the number of single-person households would exceed 5.7 million (28.9% of the total number of households), an increase of 18.3% compared to the beginning of 2020.

The number of people living alone would increase from 10.2% of the total population in 2020 to 11.8% in 2035.

Two-person households would still be the most frequent type in 2035. They would reach 6.4 million (32.3% of the total), an increase of 12.5% since 2020.

On the other hand, households with three and four people would maintain negative growth rates throughout the 2020-2035 period. Three person households would decrease by 5.3% and four person households by 11.0%.

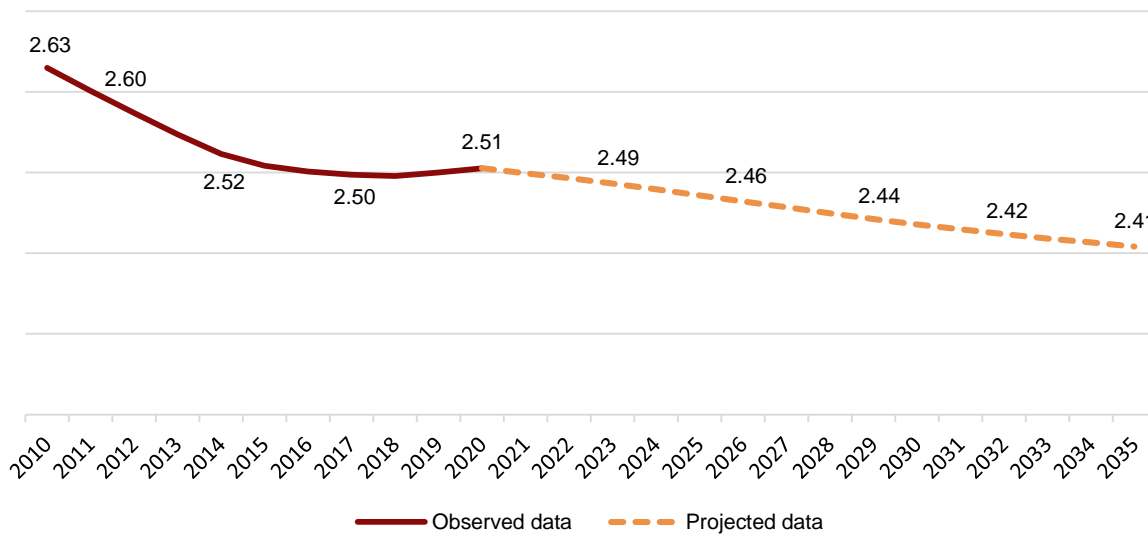
Lastly, households with five or more members would grow by 6.2%, from 1.10 million in 2020 to 1.16 million in 2035.

Evolution of Average Household Size

The average number of persons per household has maintained a downward trend since the last censuses. It fell from nearly four people in 1970 to 2.9 in 2001, and has continued to decline since then, save for a small rebound in 2020.

This downward trend should continue throughout the projected period, going from an average size of 2.51 people per household in 2020 to 2.41 in 2035.

Observed (2010-2019) and Projected (2020-2035) Evolution of Average Household Size



Household projection by Autonomous Community

The number of households would increase in all Autonomous Communities throughout the 2020-2035 period, except in Castilla y León (-3.4%) and Principado de Asturias (-3.2%).

The highest growth in the number of households would occur in Illes Balears (12.6%), Canarias (11.3%) and Región de Murcia (11.2%).

The average size of the household would decrease in all the communities, except in Illes Balears. The largest decreases would be registered in Extremadura, Principado de Asturias and Castilla y León. On the other hand, the most moderate decreases would occur in Comunidad de Madrid, Cataluña and Comunidad Foral de Navarra.

With regard to the percentage of single-person households, Principado de Asturias would be in the lead (with 36.0% of the total in the year 2035), followed by Castilla y León (34.6%) and Cantabria (33.0%). The Autonomous City of Murcia would have the lowest percentage of single-person households (24.0%), followed by Illes Balears (24.8%) and Canarias (25.4%).

Projected Growth in the Number of Households by Autonomous Communities (2020-2035). Percentages



Projection of the Number of Households by Autonomous Communities (2020-2035)

	Total households		Growth 2020-2035		Average household size		% of one-person households	
	2020	2035	Absolute	Relative (%)	2020	2035	2020	2035
TOTAL	18,692,279	19,796,040	1,103,761	5.9	2.51	2.41	25.84	28.86
Andalucía	3,243,803	3,484,277	240,474	7.4	2.59	2.42	23.96	27.73
Aragón	541,545	561,453	19,908	3.7	2.41	2.30	27.60	31.02
Asturias, Principado de	454,937	440,423	-14,514	-3.2	2.21	2.05	30.71	36.00
Balears, Illes	458,479	516,020	57,541	12.6	2.62	2.67	23.90	24.84
Canarias	852,907	949,301	96,394	11.3	2.61	2.54	24.02	25.36
Cantabria	242,445	245,292	2,847	1.2	2.38	2.22	28.44	33.02
Castilla y León	1,020,467	985,323	-35,144	-3.4	2.30	2.14	29.86	34.63
Castilla - La Mancha	787,526	808,832	21,306	2.7	2.56	2.40	24.51	28.50
Cataluña	3,028,742	3,233,558	204,816	6.8	2.50	2.46	26.01	28.31
Comunitat Valenciana	2,016,529	2,153,825	137,296	6.8	2.47	2.38	26.34	29.57
Extremadura	431,645	435,535	3,890	0.9	2.43	2.20	26.94	32.62
Galicia	1,091,843	1,094,458	2,615	0.2	2.45	2.28	26.13	30.39
Madrid, Comunidad de	2,623,525	2,882,075	258,550	9.9	2.54	2.52	25.70	27.35
Murcia, Región de	546,901	608,382	61,481	11.2	2.74	2.61	21.24	23.96
Navarra, Comunidad Foral de	258,021	272,889	14,868	5.8	2.51	2.47	26.99	28.61
País Vasco	909,072	932,464	23,392	2.6	2.38	2.27	27.94	31.90
Rioja, La	130,088	134,381	4,293	3.3	2.40	2.31	28.49	31.14
Ceuta	27,349	29,830	2,481	9.1	3.05	2.68	20.87	26.34
Melilla	26,455	27,722	1,267	4.8	3.16	3.03	18.68	20.08

Data Review and Update

The data published today update the Household Projection 2018-2033, the results of which are no longer representative.

Methodological note

The Household Projection provides a statistical simulation of the number of future households in Spain as a whole, in each autonomous community, and in each province, should the currently observed demographic trends continue, as well as household distribution by size. The results are fully consistent with those of the Population Projections.

This operation provides results for the subsequent 15 years, taking as starting point the number of households as of January 1, 2020.

The municipal registers for the years prior to elaboration are used as a statistical tool, which allows us to obtain the proportion of people, according to characteristics of sex, age and province of residence, residing in households with one, two, three, four or five or more members.

There are no international regulatory standards for household projections, so any projections produced by other international agencies would serve their own purposes, methodologies and assumptions, and their results would generally not coincide with each other or with those of this operation.

Operation type: synthesis statistics, prepared from results from different sources on past and present demographic evolution.

Population scope: households in the national territory, with household defined as the person or group of persons who habitually reside in a family dwelling.

Geographical scope: national, Autonomous Communities and Cities and provinces.

Reference period of the results: household data are provided as at 1 January of the 15 years following the year of compilation.

Frequency of dissemination: biennial as of 2014.

For more information the methodology can be accessed at:

https://www.ine.es/dyngs/INEbase/es/operacion.htm?c=Estadistica_C&cid=1254736176954&menu=metodologia&idp=1254735572981

The standardized methodological report is at:

<https://www.ine.es/dynt3/metadatos/es/RespuestaDatos.html?oe=30276>

For further information see **INEbase: www.ine.es/en/** Twitter: **@es_ine**

All press releases at: **www.ine.es/en/prensa/prensa_en.htm**

Press Office: Telephone numbers: (+34) 91 583 93 63 /94 08 – **gprensa@ine.es**

Information Area: Telephone number: (+34) 91 583 91 00 – **www.ine.es/infoine/?L=1**
