



seriss

SYNERGIES FOR EUROPE'S
RESEARCH INFRASTRUCTURES
IN THE SOCIAL SCIENCES

www.seriss.eu
[@SERISS_EU](https://twitter.com/SERISS_EU)

Synergies for Europe's Research Infrastructures in the Social Sciences (SERISS) and official statistics

Rory Fitzgerald & Sarah Butt
European Social Survey HQ,
City University London



This project has received funding from the *European Union's Horizon 2020 research and innovation programme* under grant agreement No 654221.



seriss

SYNERGIES FOR EUROPE'S
RESEARCH INFRASTRUCTURES
IN THE SOCIAL SCIENCES

www.seriss.eu
@SERISS_EU

A collaboration between:

- European Social Survey (ESS ERIC)
- Survey of Health, Ageing and Retirement in Europe (SHARE ERIC)
- Consortium of European Social Science Data Archives (CESSDA AS)
- Generations and Gender Programme (GGP)
- European Values Study
- WageIndicator Survey



cessda



European *Values* Study



WageIndicator.org



This project has received funding from the *European Union's Horizon 2020 research and innovation programme* under grant agreement No 654221.



Designed to:

- Strengthen social science research across Europe and beyond by overcoming fragmentation and fostering interoperability, harmonisation and innovation
- Equip social science infrastructures to play a major role in addressing key societal challenges and ensure that national and European policy making is built on a firm socio-economic evidence base
- Promote the value of the social sciences to the wider research community, and policymakers





Achieved by:

- **Addressing key challenges for cross-national data collection** e.g. accurately representing the population, achieving equivalence through translation
- **Breaking down barriers between social science infrastructures** via training and networking events and the development of shared online tools to facilitate harmonised data collection and documentation.
- **Embracing the future of the social sciences** by examining the legal and ethical challenges associated with new forms of data, developing a cross-national probability-based web survey and exploring automated coding for socio-economic variables

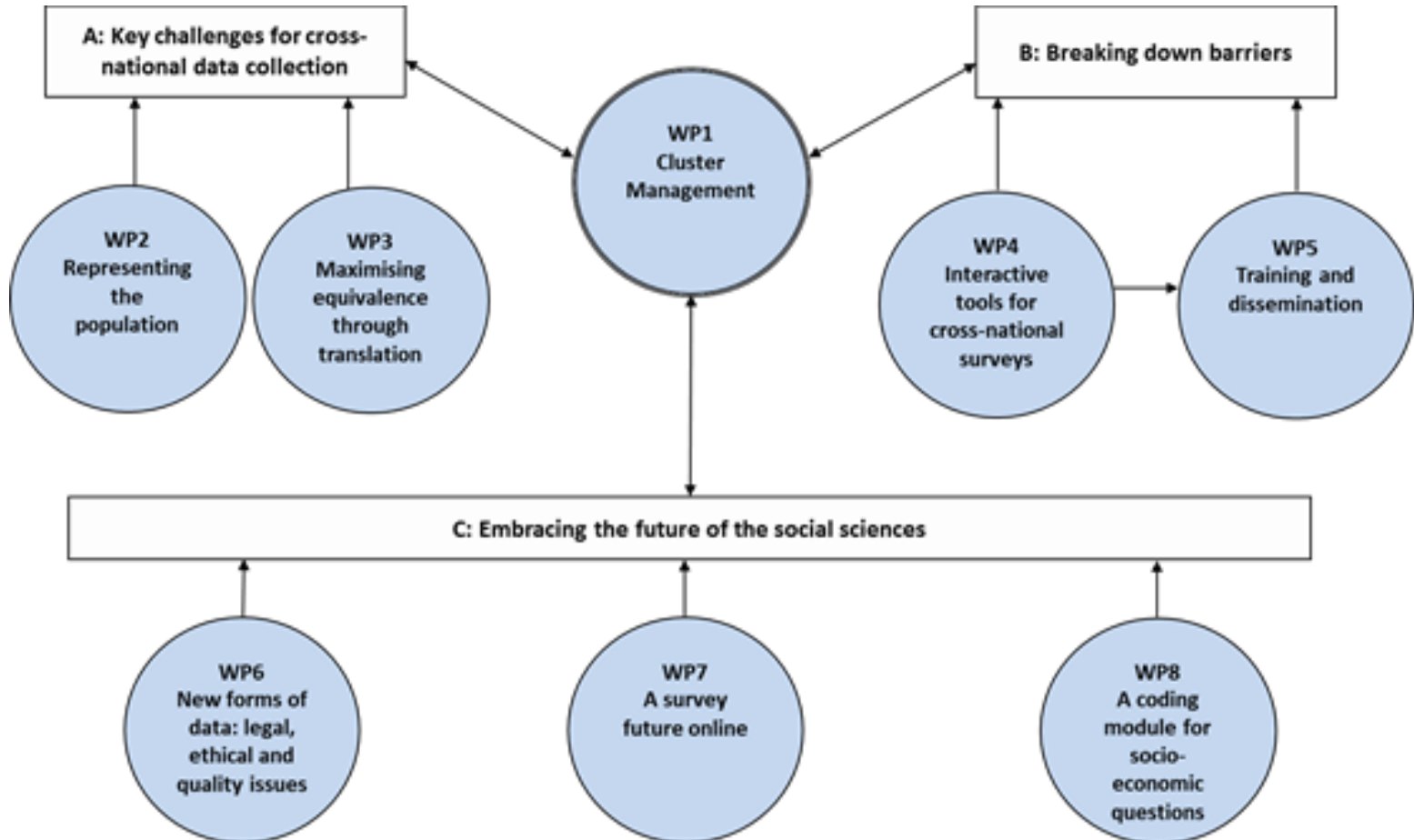




Links between SERISS and European Statistical System Vision 2020

- **THE DATA REVOLUTION** – new forms of data and new producers.
- **NEW METRICS** – global angles, regional angles and increasing demands for micro level data.
- **THE PRICE OF STATISTICS** - how to maintain quality with less resources.
- **THE FUTURE OF EUROPE** – high quality statistics needed to inform next phase of European development but unclear what the challenges will be that official statistics need to inform.
- **KEY LINK AREAS** – Data Quality, Efficient Processes & New data forms



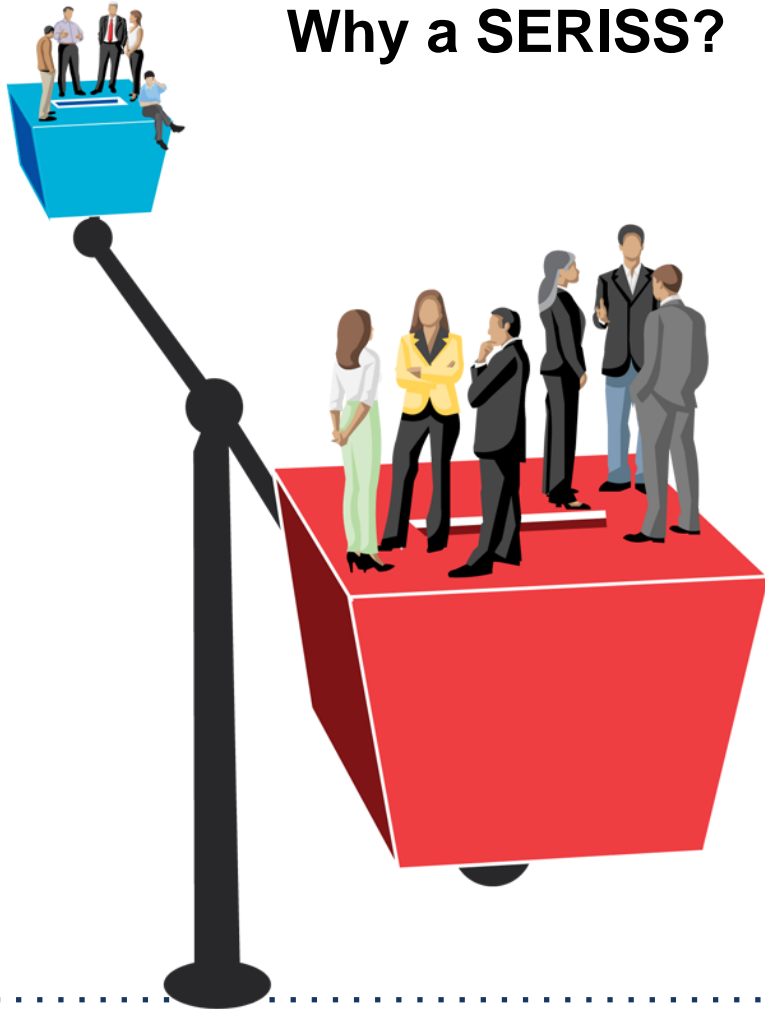




Looking for collaboration so grand societal challenges can be addressed....

- 1) Official and academic social survey infrastructures need to address similar challenges to stay relevant
- 2) Success of SERISS relies on lessons learnt being adopted
- 3) Both official statistics and academic surveys need to ensure they can feed into evidence based policy making and debates
- 4) Many SERISS issues are important for realisation of ESS Vision 2020
- 5) Stakeholder workshops, Survey Network, training courses
- 6) Interested in recruiting someone from ESS to join SERISS Board of Strategic Advice





Why a SERISS?

‘Change management’ for entire societies requires social surveys...

Policymaking without social surveys is like driving a car in the night without lights.

Telescopes help astronomers to see their objects; policy makers and social scientists see the mechanics of our social world in much the same way via social surveys (and other new forms of data).





seriss

SYNERGIES FOR EUROPE'S
RESEARCH INFRASTRUCTURES
IN THE SOCIAL SCIENCES

www.seriss.eu
 @SERISS_EU

Further information

www.seriss.eu

@ SERISS_EU

r.fitzgerald@city.ac.uk

sarah.butt.1@city.ac.uk



This project has received funding from the *European Union's Horizon 2020 research and innovation programme* under grant agreement No 654221.